



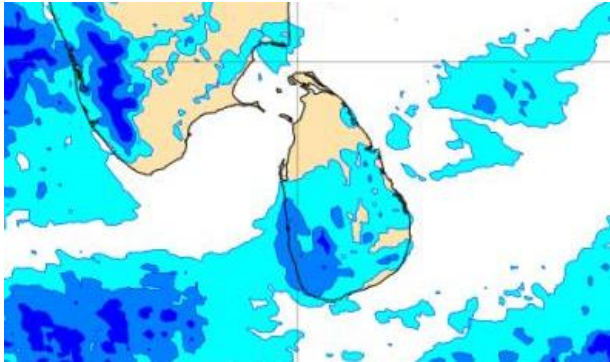
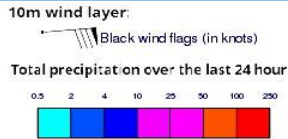
INFORMATION FUSION CENTRE COLOMBO

08 DAYS FORECAST FOR COASTAL AREAS AROUND SRI LANKA

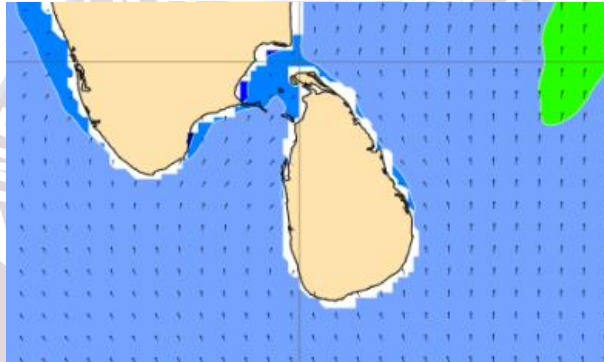
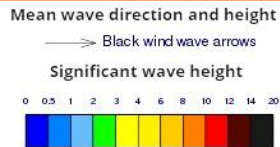


Issued at 10.00 p.m. on 25 August 2023
Marine Weather Division, National Meteorological Centre,
Department of Meteorology.

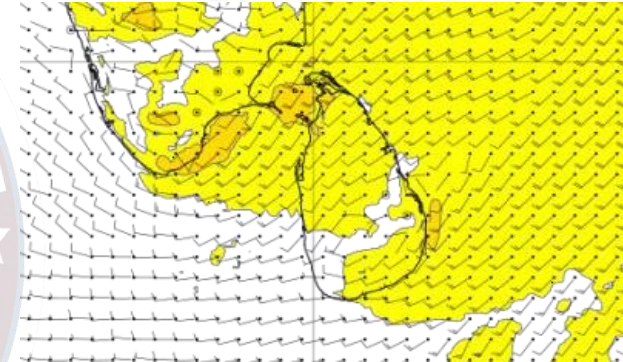
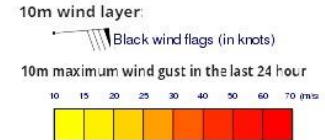
Wind and Rainfall Forecast (Total precipitation for 24 hrs)



Significant wave height (in meters)



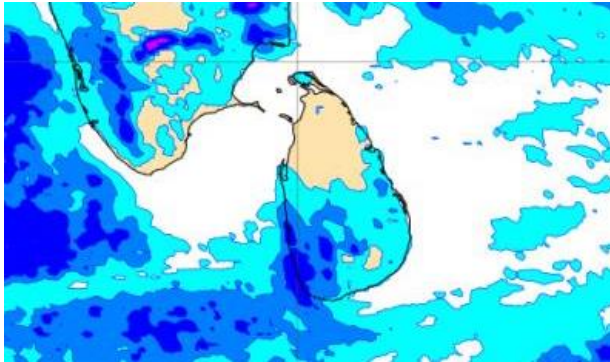
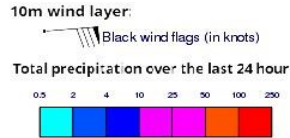
Wind Gust (m/s)



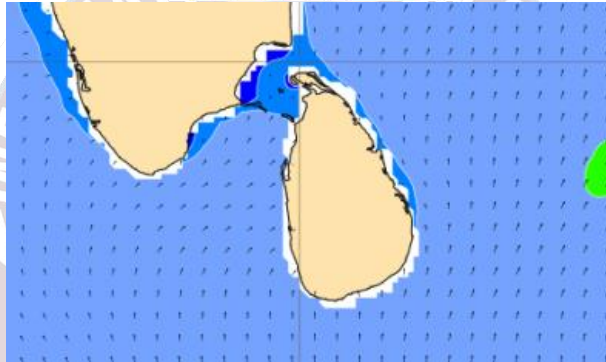
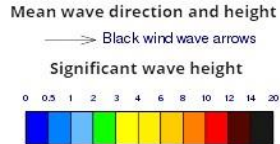
Showers or thundershowers will occur at a few places in the sea areas off the coast extending from Colombo to Matara via Galle.

Wind speed will be 25-35 kmph in the sea areas around the island. The sea area extending from Pottuvil to Hambantota and from Puttalam to Kankasanturai via Mannar can be fairly rough at times as the wind speed may increase up to 40-50 kmph at times.

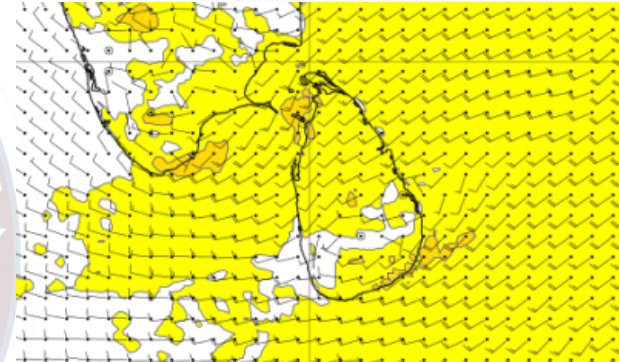
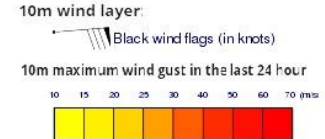
Wind and Rainfall Forecast (Total precipitation for 24 hrs)



Significant wave height (in meters)



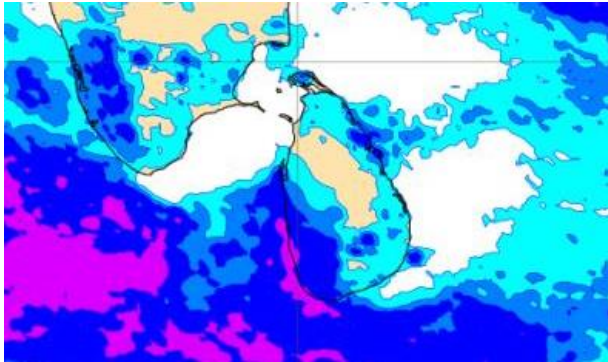
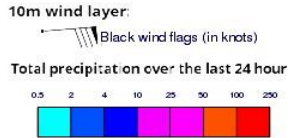
Wind Gust (m/s)



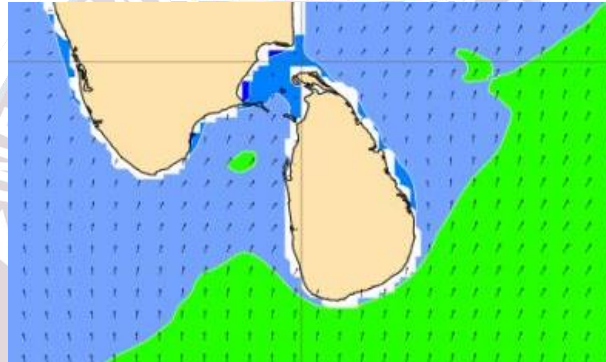
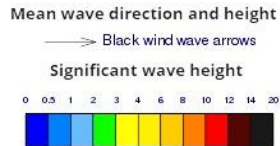
Showers or thundershowers will occur at a few places in the sea areas off the coast extending from Colombo to Matara via Galle

Wind speed will be 25-35 kmph in the sea areas around the island. The sea area extending from Pottuvil to Hambantota and from Puttalam to Kankasanturai via Mannar can be fairly rough at times as the wind speed may increase up to 40-50 kmph at times.

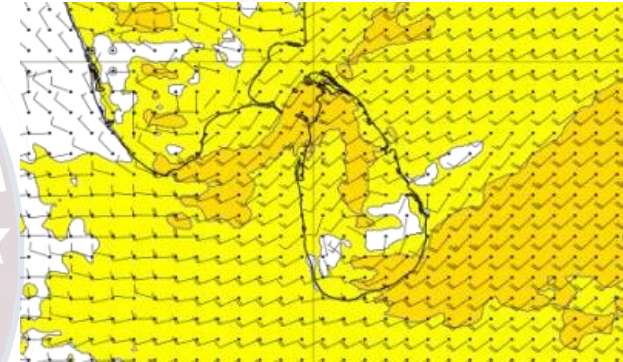
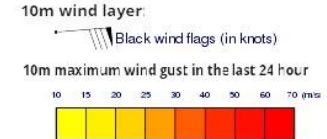
Wind and Rainfall Forecast (Total precipitation for 24 hrs)



Significant wave height (in meters)



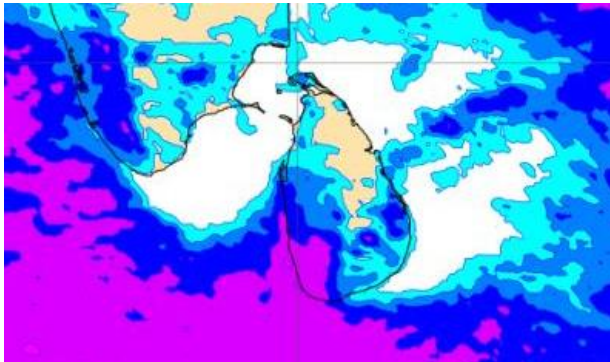
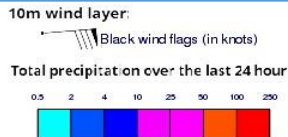
Wind Gust (m/s)



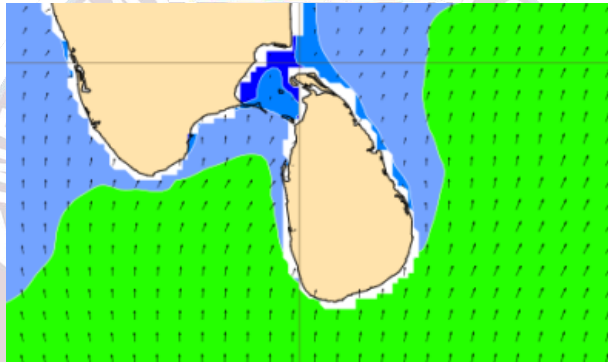
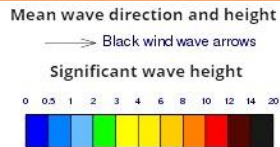
Showers or thundershowers may occur at a few places in the sea areas off the coast extending from Colombo to Matara via Galle.

Wind speed will be 25-35 kmph in the sea areas around the island. The sea area extending from Pottuvil to Hambantota and from Puttalam to Kankasanturai via Mannar can be rough at times as the wind speed may increase up to 45-55 kmph at times

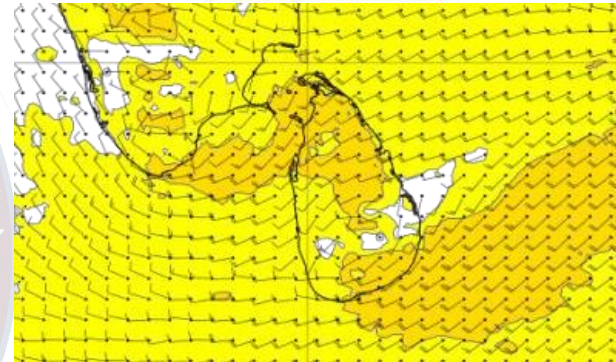
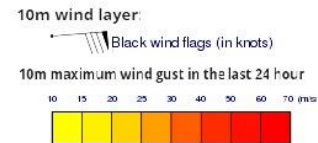
Wind and Rainfall Forecast (Total precipitation for 24 hrs)



Significant wave height (in meters)



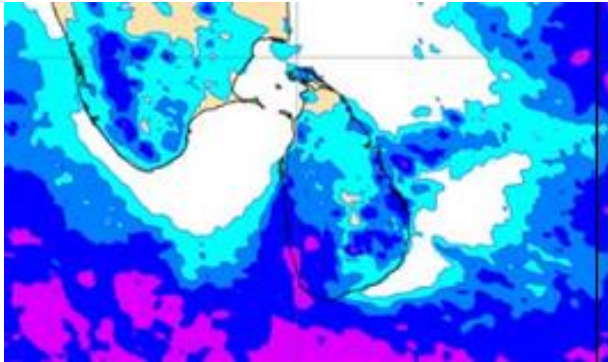
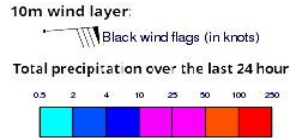
Wind Gust (m/s)



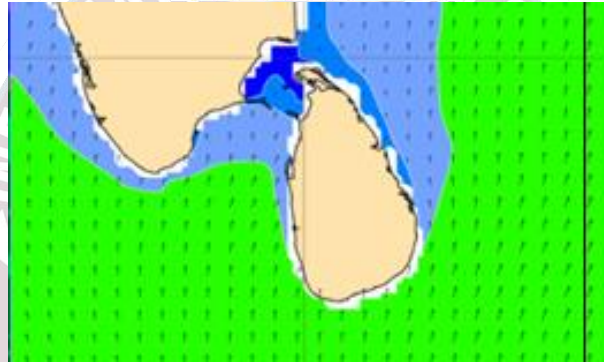
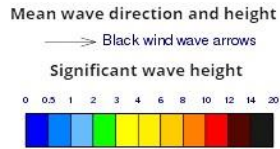
Showers or thundershowers may occur at several places in the sea areas off the coast extending from Puttalam to Matara via Colombo and Galle.

Wind speed will be 25-35 kmph in the sea areas around the island. The sea area extending from Pottuvil to Hambantota and from Puttalam to Kankasanturai via Mannar can be rough at times as the wind speed may increase up to 45-55 kmph at times

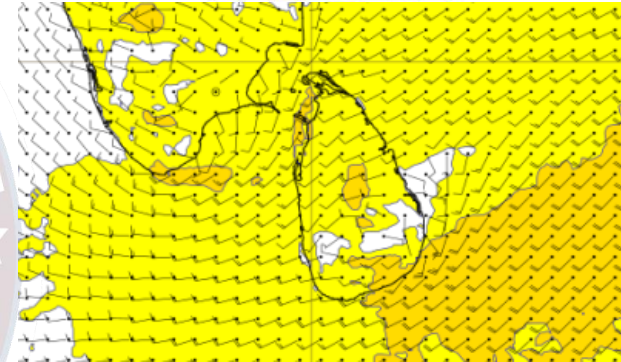
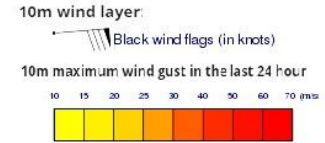
Wind and Rainfall Forecast (Total precipitation for 24 hrs)



Significant wave height (in meters)



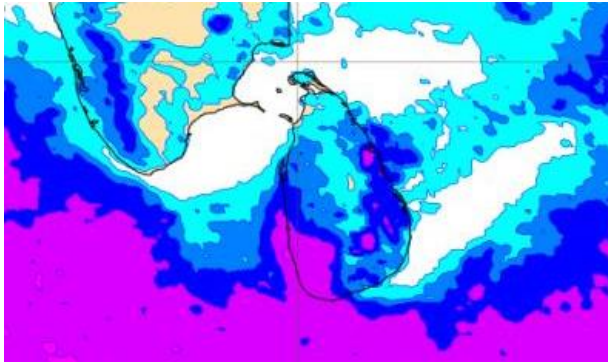
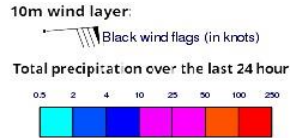
Wind Gust (m/s)



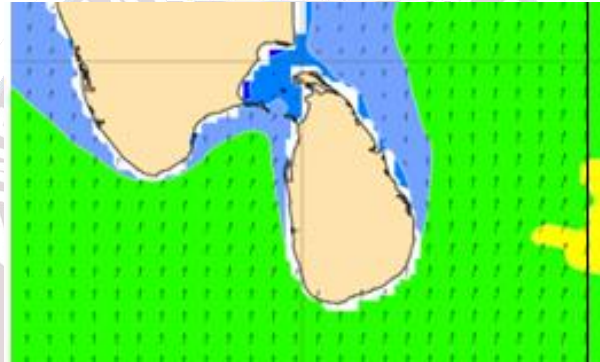
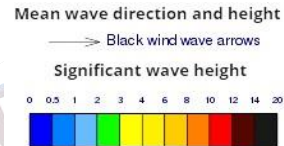
Showers or thundershowers may occur at several places in the sea areas off the coast extending from Puttalam to Matara via Colombo and Galle.

Wind speed will be 25-35 kmph in the sea areas around the island. The sea area extending from Pottuvil to Hambantota and from Puttalam to Kankasanturai via Mannar can be rough at times as the wind speed may increase up to 45-55 kmph at times.

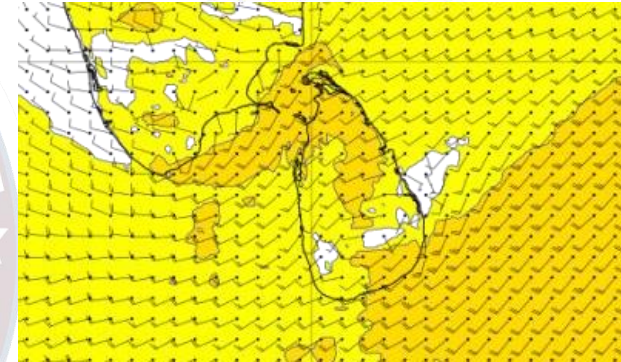
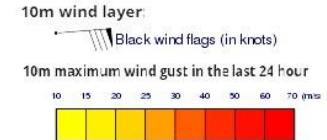
Wind and Rainfall Forecast (Total precipitation for 24 hrs)



Significant wave height (in meters)



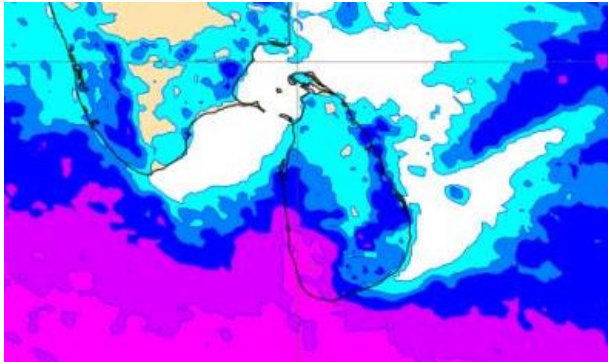
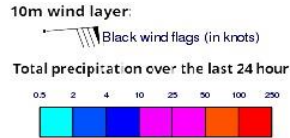
Wind Gust (m/s)



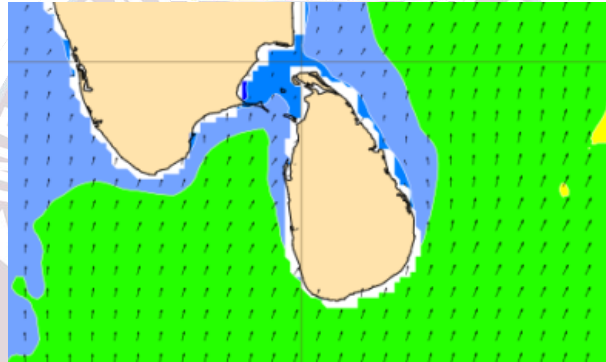
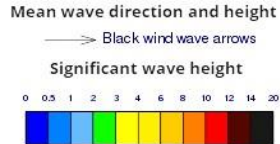
Showers or thundershowers may occur at several places in the sea areas off the coast extending from Puttalam to Matara via Colombo and Galle.

Wind speed will be 25-35 kmph in the sea areas around the island. The sea area extending from Pottuvil to Hambantota and from Puttalam to Kankasanturai via Mannar can be rough at times as the wind speed may increase up to 45-55 kmph at times.

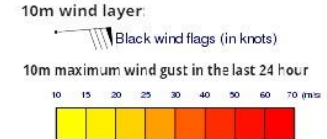
Wind and Rainfall Forecast (Total precipitation for 24 hrs)



Significant wave height (in meters)



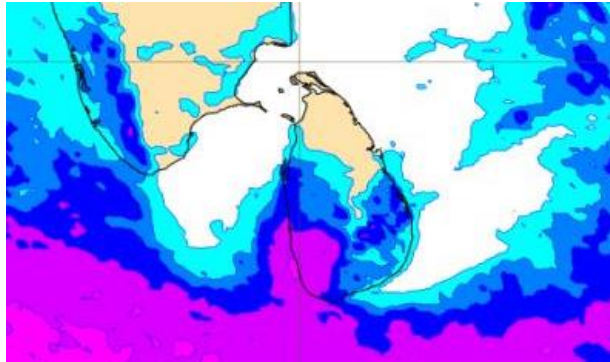
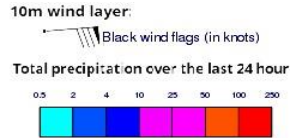
Wind Gust (m/s)



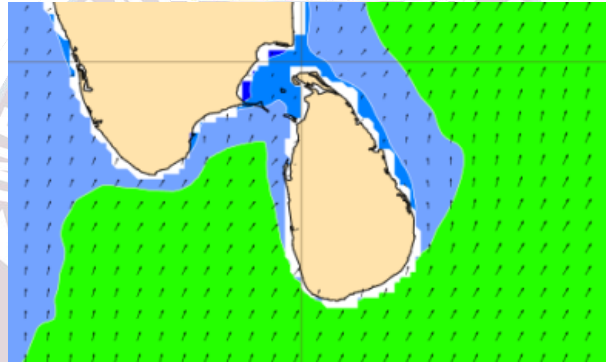
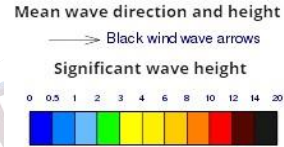
Showers or thundershowers may occur at several places in the sea areas off the coast extending from Puttalam to Matara via Colombo and Galle.

Wind speed will be 25-35 kmph in the sea areas around the island. The sea area extending from Pottuvil to Hambantota can be rough at times as the wind speed may increase up to 45-55 kmph at times.

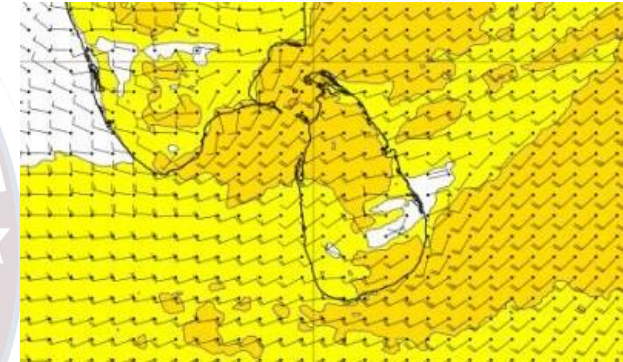
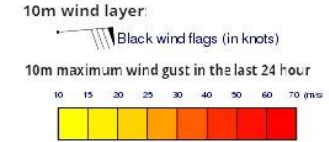
Wind and Rainfall Forecast (Total precipitation for 24 hrs)



Significant wave height (in meters)



Wind Gust (m/s)



Showers or thundershowers may occur at several places in the sea areas off the coast extending from Puttalam to Matara via Colombo and Galle.

Wind speed will be 25-35 kmph in the sea areas around the island. The sea area extending from Pottuvil to Hambantota and from Puttalam to Kankasanturai via Mannar can be rough at times as the wind speed may increase up to 45-55 kmph at times.



Thank you!