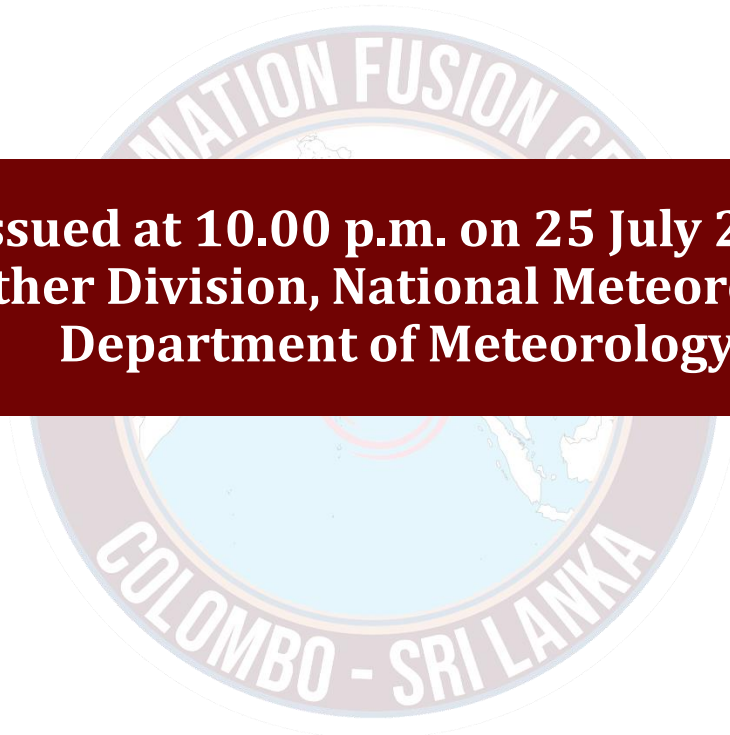




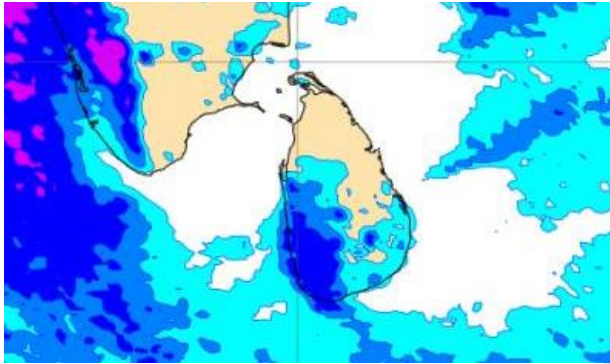
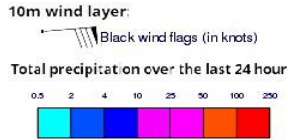
# **INFORMATION FUSION CENTRE COLOMBO**

**08 DAY FORECAST FOR COASTAL AREAS AROUND SRI LANKA**

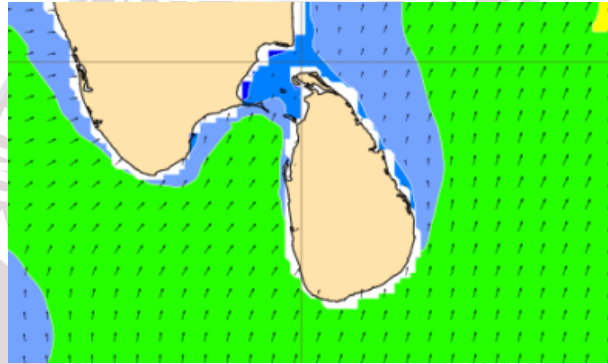
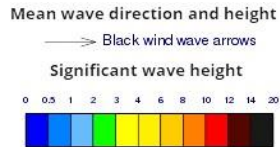


**Issued at 10.00 p.m. on 25 July 2023**  
**Marine Weather Division, National Meteorological Centre,**  
**Department of Meteorology.**

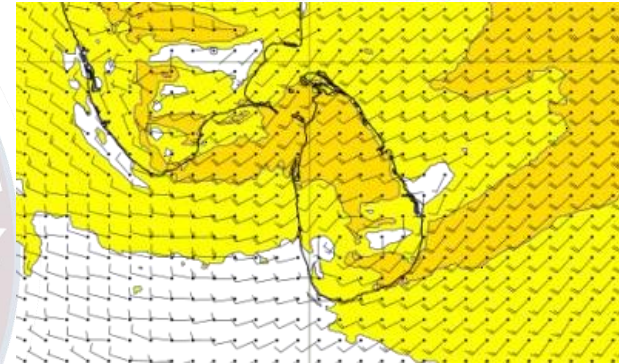
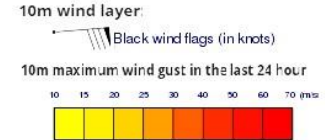
## Wind and Rainfall Forecast (Total precipitation for 24 hrs)



## Significant wave height (in meters)



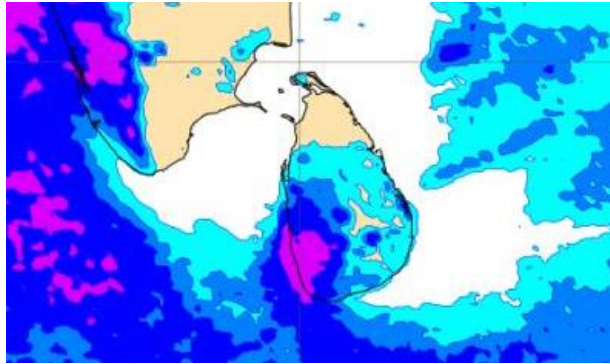
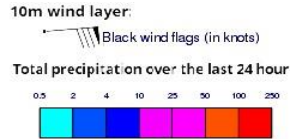
## Wind Gust (m/s)



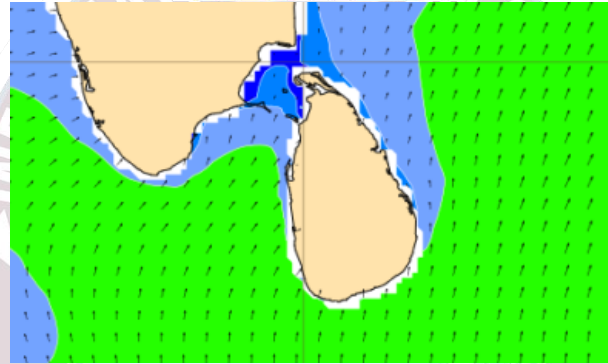
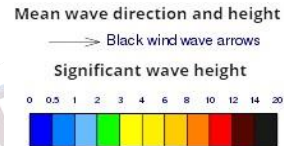
Showers or thundershowers will occur at several places in the sea areas off the coast extending from Colombo to Matara via Galle.

Wind speed will be 30-40 kmph in the sea areas around the island. The sea area extending from Pottuvil to Hambantota and from Trincomalee to Puttalam via Kankasanturai & Mannar can be rough at times as the wind speed may increase up to 60 kmph at times.

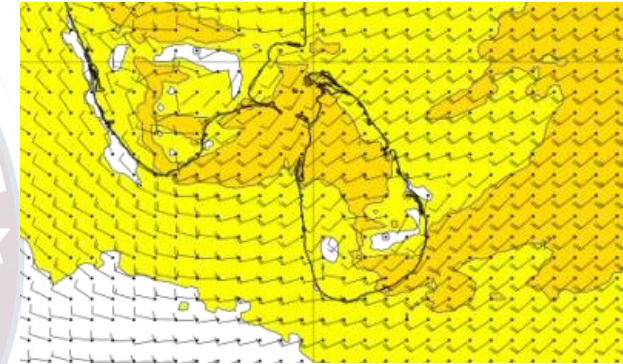
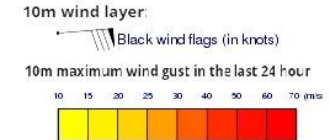
## Wind and Rainfall Forecast (Total precipitation for 24 hrs)



## Significant wave height (in meters)



## Wind Gust (m/s)

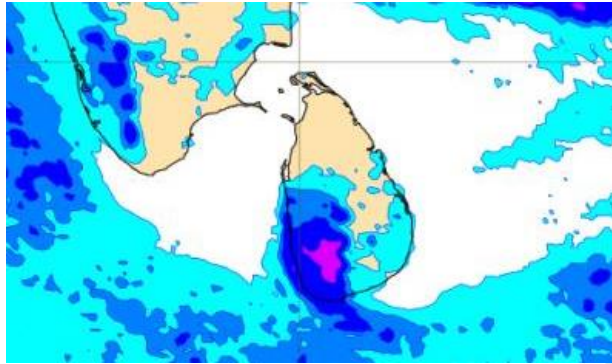
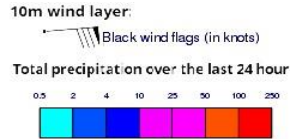


Showers or thundershowers will occur at a few places in the sea areas off the coast extending from Puttalam to Matara via Colombo and Galle.

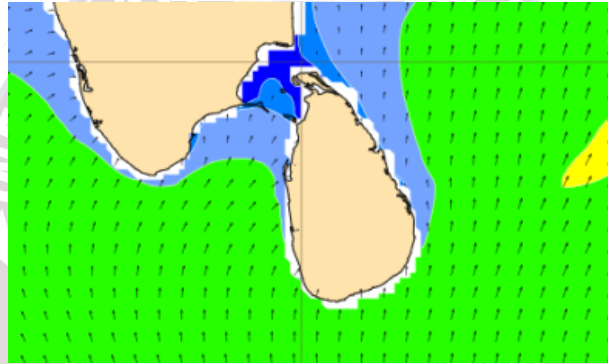
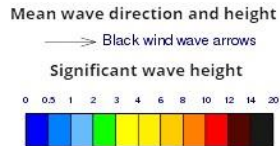
Wind speed will be 30-40 kmph in the sea areas around the island. The sea area extending from Pottuvil to Hambantota and from Trincomalee to Puttalam via Kankasanturai & Mannar can be rough at times as the wind speed may increase up to 60 kmph at times.



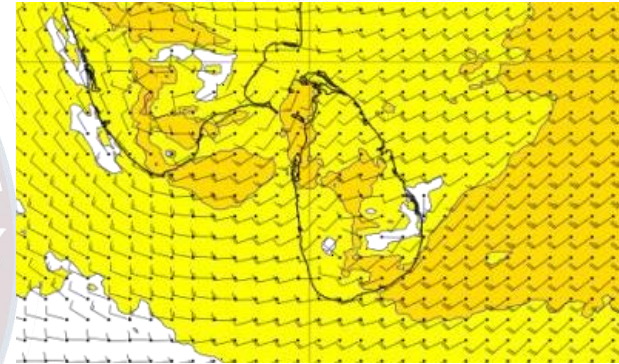
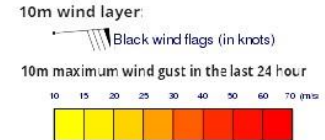
## Wind and Rainfall Forecast (Total precipitation for 24 hrs)



## Significant wave height (in meters)



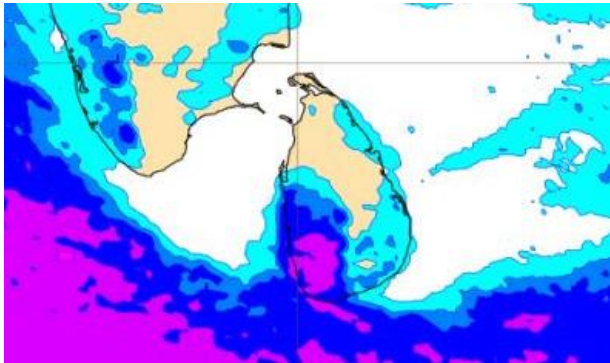
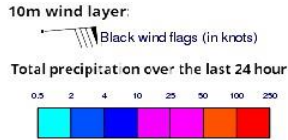
## Wind Gust (m/s)



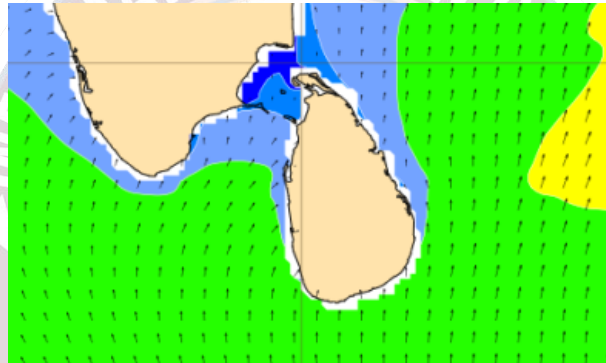
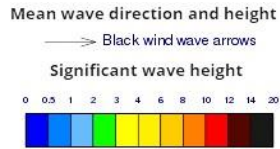
Showers or thundershowers will occur at a few places in the sea areas off the coast extending from Puttalam to Matara via Colombo and Galle.

Wind speed will be 30-40 kmph in the sea areas around the island. The sea area extending from Pottuvil to Hambantota and from Kankasanturai to Puttalam via Mannar can be rough at times as the wind speed may increase up to 45-55 kmph at times.

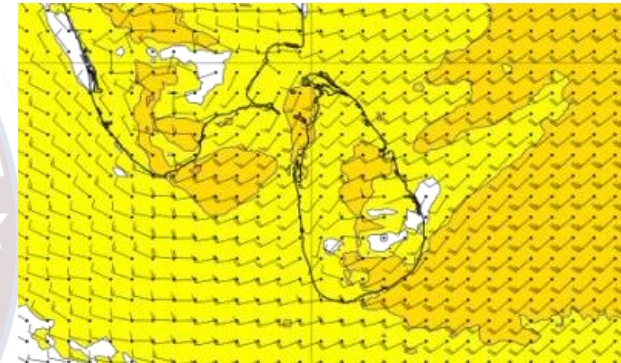
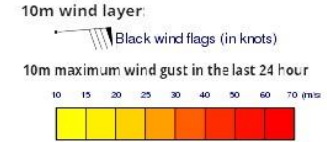
## Wind and Rainfall Forecast (Total precipitation for 24 hrs)



## Significant wave height (in meters)



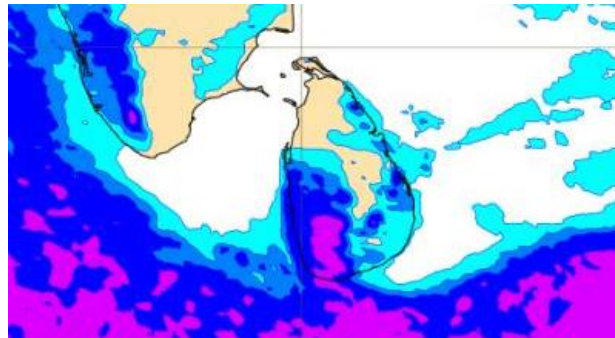
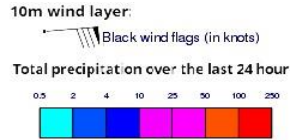
## Wind Gust (m/s)



Showers or thundershowers will occur at a few places in the sea areas off the coast extending from Puttalam to Matara via Colombo and Galle.

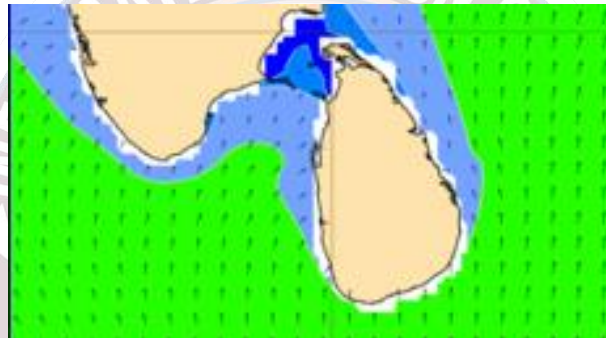
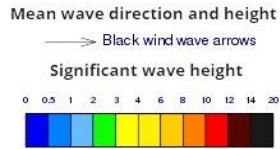
Wind speed will be 30-40 kmph in the sea areas around the island. The sea area extending from Pottuvil to Hambantota and from Kankasanturai to Puttalam via Mannar can be rough at times as the wind speed may increase up to 45-55 kmph at times.

## Wind and Rainfall Forecast (Total precipitation for 24 hrs)

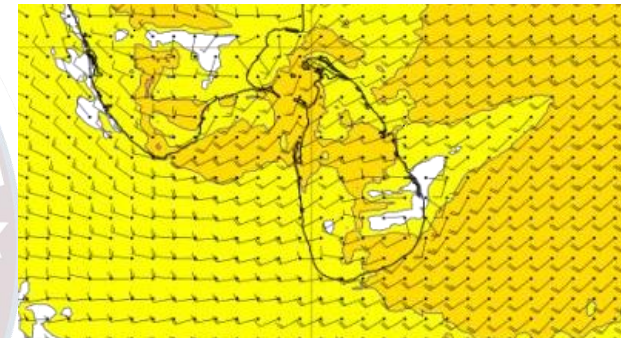
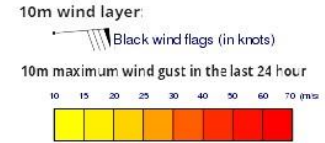


Showers or thundershowers will occur at a few places in the sea areas off the coast extending from Puttalam to Matara via Colombo and Galle.

## Significant wave height (in meters)



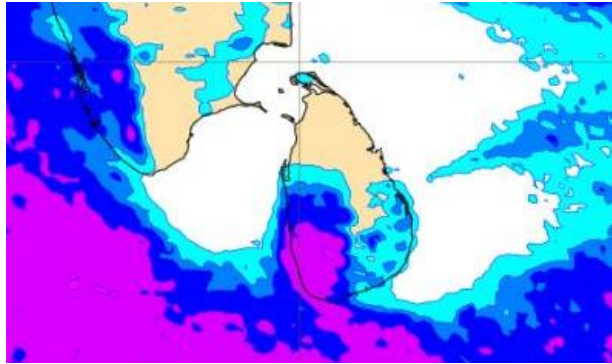
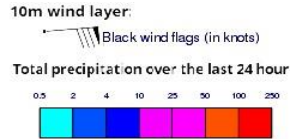
## Wind Gust (m/s)



Wind speed will be 30-40 kmph in the sea areas around the island. The sea area extending from Pottuvil to Galle via Hambantota and from Trincomalee to Puttalam via Kankasanturai & Mannar can be rough at times as the wind speed may increase up to 50-60 kmph at times. The sea area extending from Puttalam to Hambantota via Colombo, Galle and Matara can be fairly rough at times as the wind speed may increase up to 50 kmph at times.



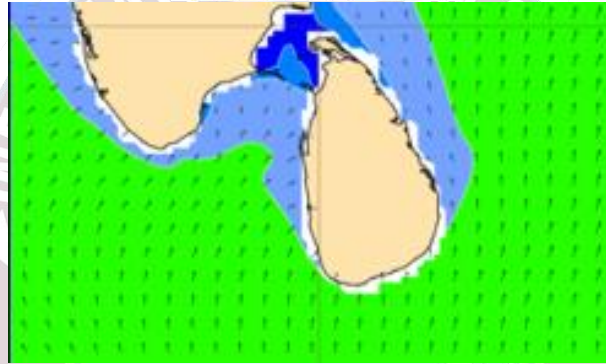
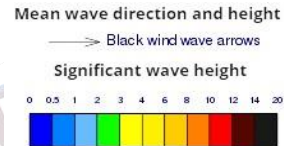
## Wind and Rainfall Forecast (Total precipitation for 24 hrs)



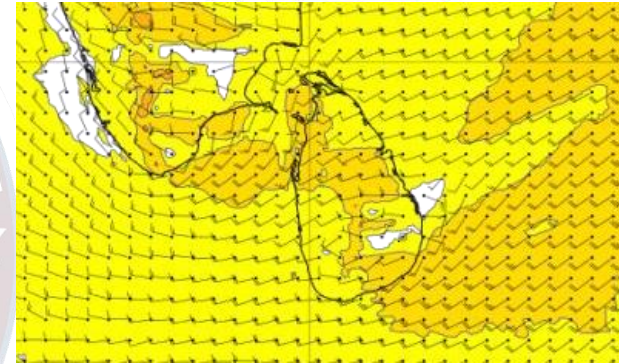
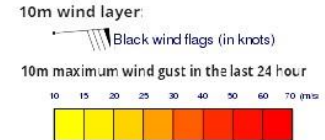
Showers or thundershowers will occur at a few places in the sea areas off the coast extending from Colombo to Matara via Galle.

Wind speed will be 30-40 kmph in the sea areas around the island. The sea area extending from Pottuvil to Galle via Hambantota and from Trincomalee to Puttalam via Kankasanturai & Mannar can be rough at times as the wind speed may increase up to 50-60 kmph at times. The sea area extending from Puttalam to Hambantota via Colombo, Galle and Matara can be fairly rough at times as the wind speed may increase up to 50 kmph at times.

## Significant wave height (in meters)

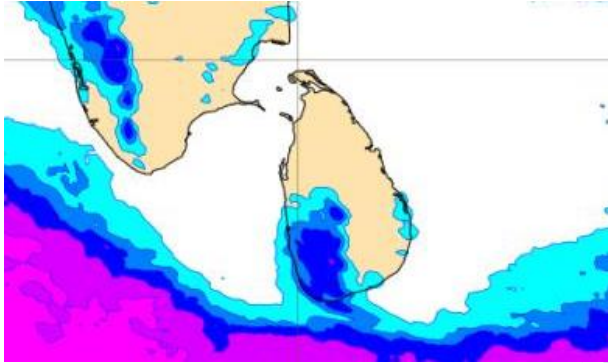
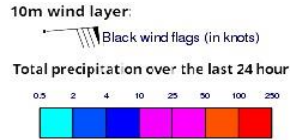


## Wind Gust (m/s)

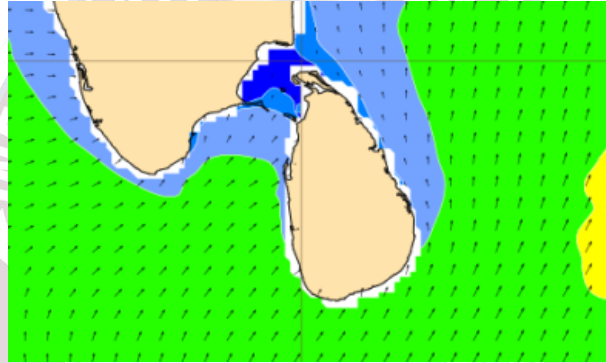
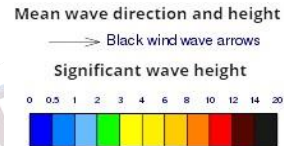




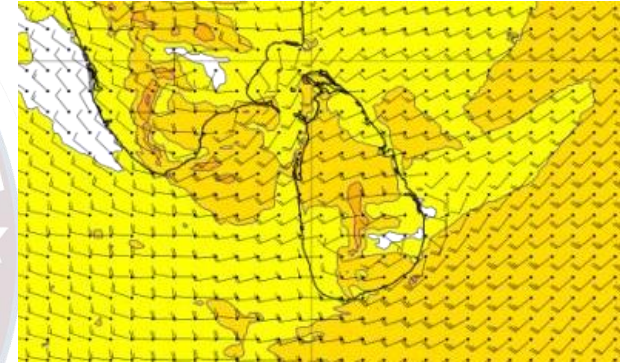
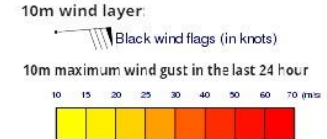
## Wind and Rainfall Forecast (Total precipitation for 24 hrs)



## Significant wave height (in meters)



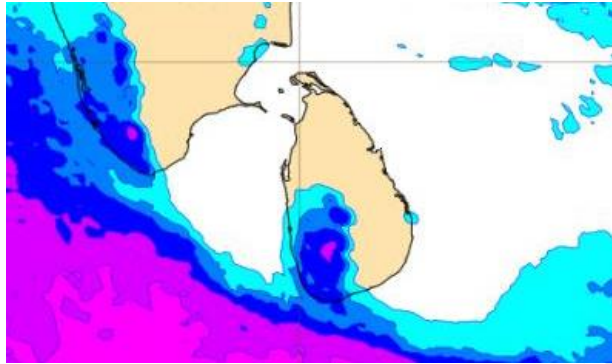
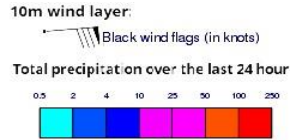
## Wind Gust (m/s)



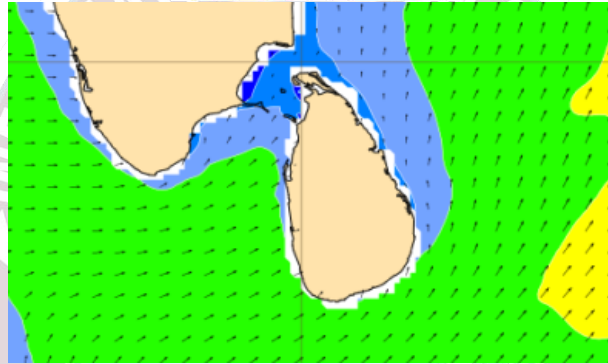
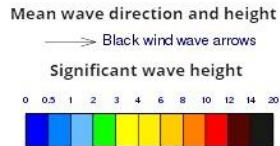
Showers or thundershowers will occur at several places in the sea areas off the coast extending from Puttalam to Matara via Colombo and Galle.

Wind speed will be 30-40 kmph in the sea areas around the island. The sea area extending from Hambantota to Pottuvil and from Kankasanturai to Puttalam via Mannar can be rough at times as the wind speed may increase up to 45-55 kmph at times.

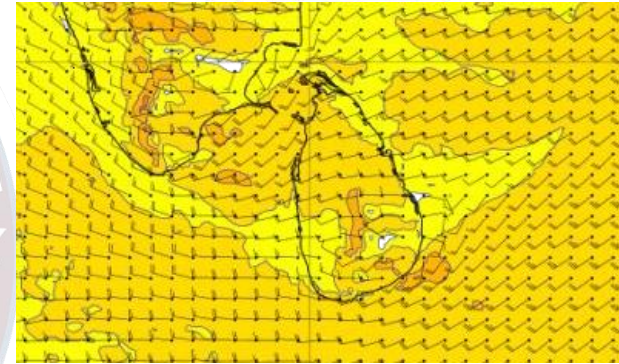
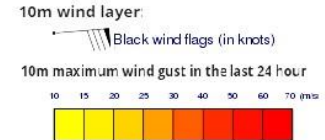
## Wind and Rainfall Forecast (Total precipitation for 24 hrs)



## Significant wave height (in meters)



## Wind Gust (m/s)



Showers or thundershowers will occur at several places in the sea areas off the coast extending from Colombo to Matara via Galle.

Wind speed will be 30-40 kmph in the sea areas around the island. The sea area extending from Hambantota to Pottuvil and from Kankasanturai to Puttalam via Mannar can be rough at times as the wind speed may increase up to 45-55 kmph at times.



Thank you!