




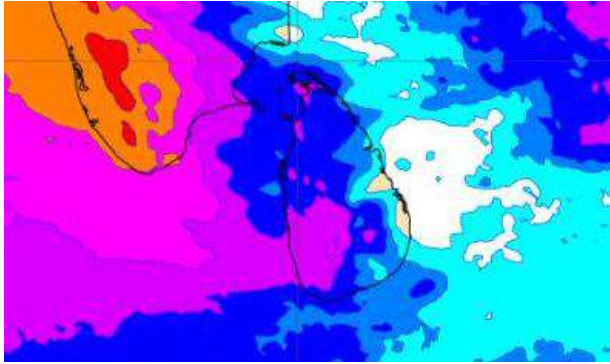
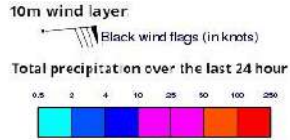
# **INFORMATION FUSION CENTRE COLOMBO**

**06 DAY FORECAST FOR COASTAL AREAS AROUND SRI LANKA**

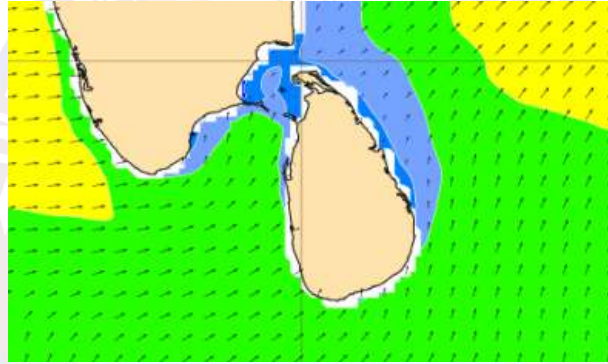
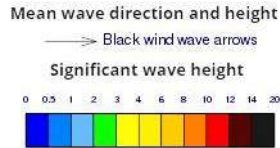


**Issued at 10.00 p.m. on 05 July 2023**  
**Marine Weather Division, National Meteorological Centre,**  
**Department of Meteorology.**

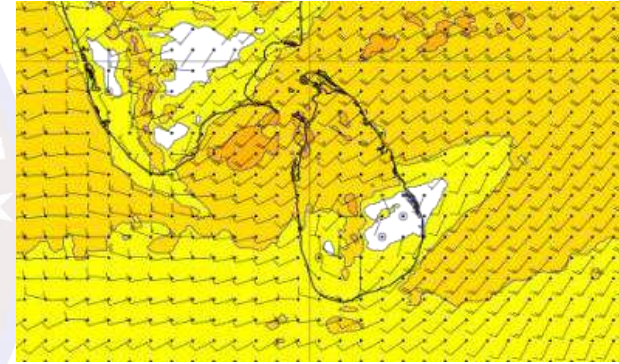
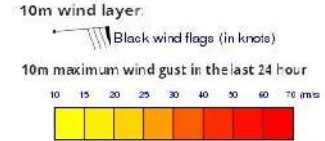
## Wind and Rainfall Forecast (Total precipitation for 24 hrs)



## Significant wave height (in meters)



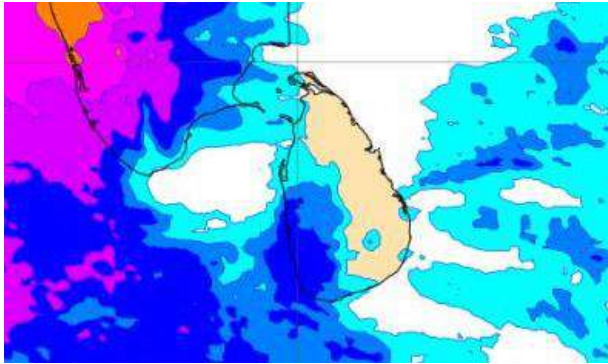
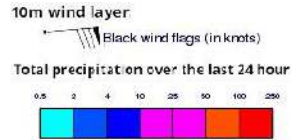
## Wind Gust (m/s)



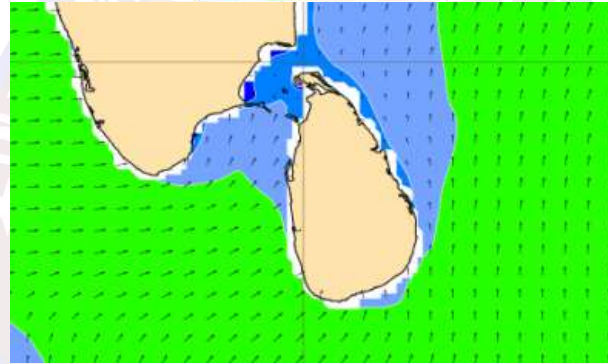
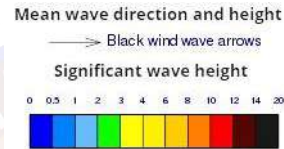
Showers or thundershowers will occur at times in the sea areas off the coast extending from Puttalam to Matara via Colombo and Galle.

Wind speed will be 30-40 kmph in the sea areas around the island. The sea area extending from Hambantota to Pottuvil and from Trincomalee to Puttalam via Kankasanturai and Mannar can be rough at times as the wind speed may increase up to 60 kmph at times.

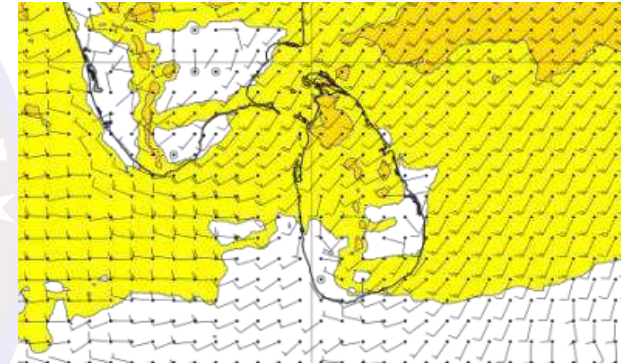
## Wind and Rainfall Forecast (Total precipitation for 24 hrs)



## Significant wave height (in meters)



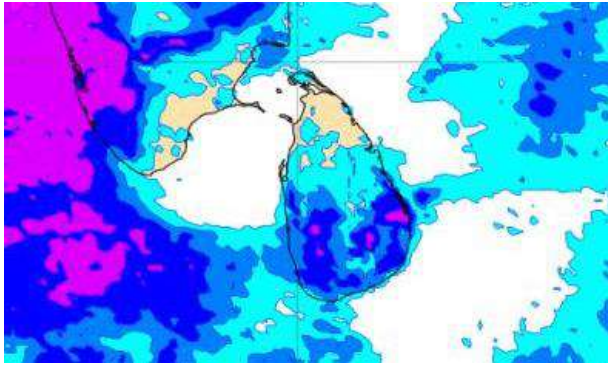
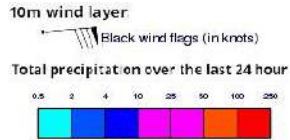
## Wind Gust (m/s)



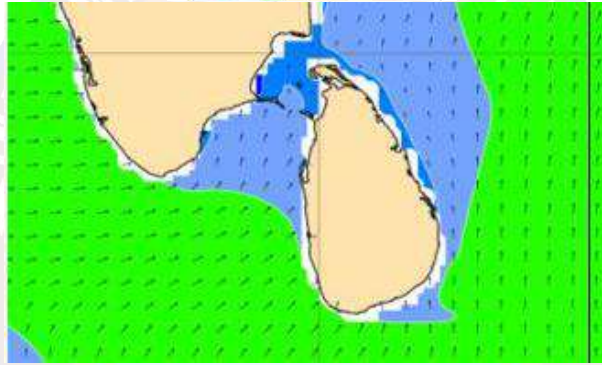
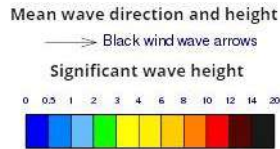
Showers or thundershowers will occur at several places in the sea areas off the coast extending from Puttalam to Matara via Colombo and Galle.

Wind speed will be 25-35 kmph in the sea areas around the island. The sea area extending from Matara to Pottuvil via Hambantota and from Trincomalee to Puttalam via Kankasanturai and Mannar can be rough at times as the wind speed may increase up to 50 kmph at times.

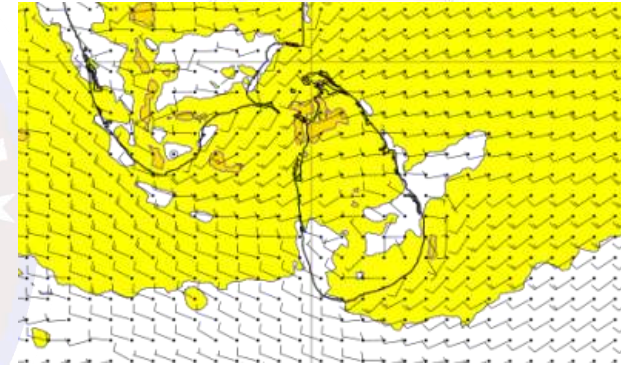
## Wind and Rainfall Forecast (Total precipitation for 24 hrs)



## Significant wave height (in meters)



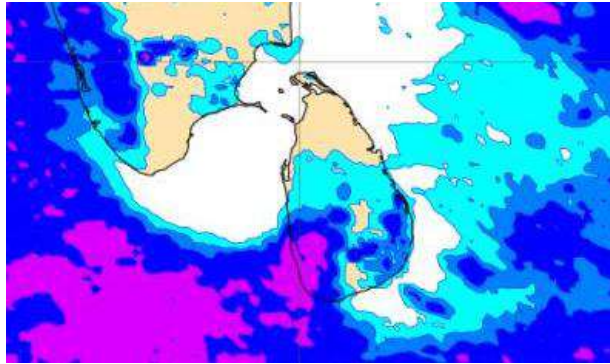
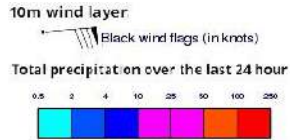
## Wind Gust (m/s)



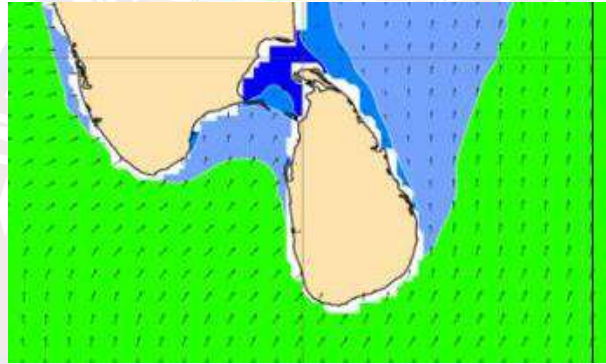
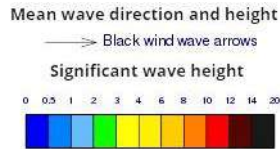
Showers or thundershowers will occur at several places in the sea areas off the coast extending from Puttalam to Matara via Colombo and Galle.

Wind speed will be 25-35 kmph in the sea areas around the island. The sea area extending from Matara to Pottuvil via Hambantota and from Trincomalee to Puttalam via Kankasanturai and Mannar can be rough at times as the wind speed may increase up to 55 kmph at times.

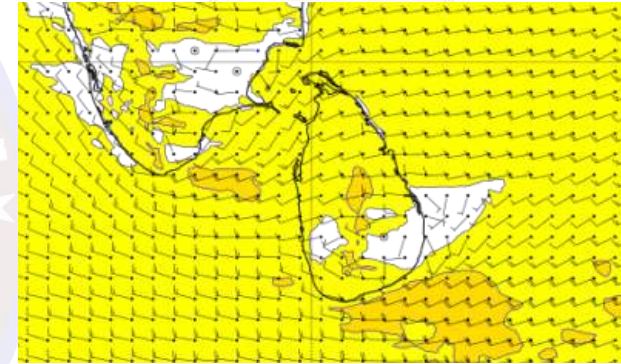
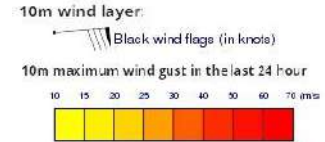
## Wind and Rainfall Forecast (Total precipitation for 24 hrs)



## Significant wave height (in meters)



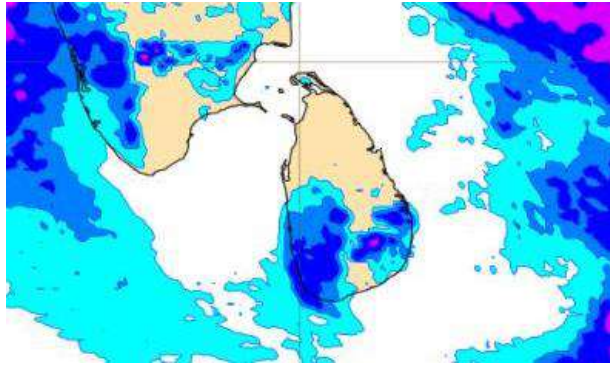
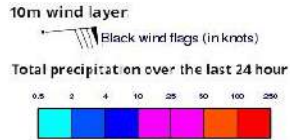
## Wind Gust (m/s)



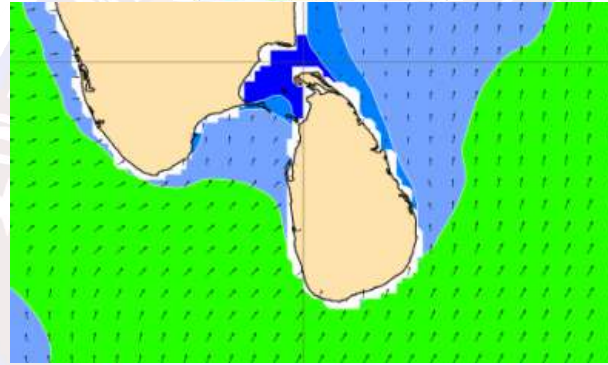
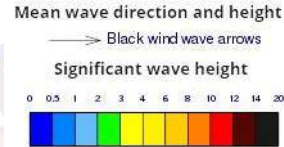
Showers or thundershowers will occur at several places in the sea areas off the coast extending from Puttalam to Matara via Colombo and Galle.

Wind speed will be 25-35 kmph in the sea areas around the island. The sea area extending from Hambantota to Pottuvil can be rough at times as the wind speed may increase up to 50-55 kmph at times.

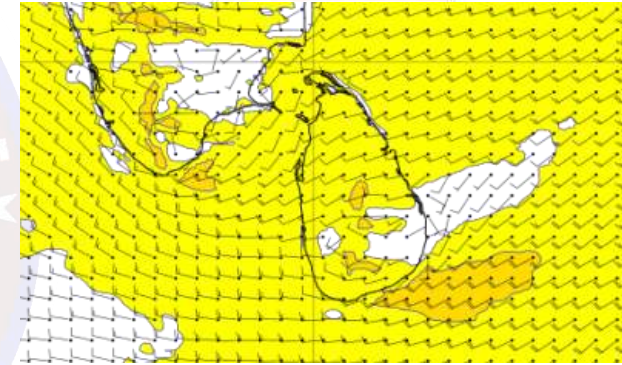
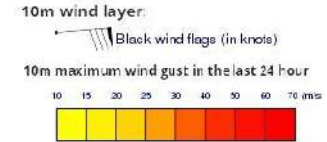
## Wind and Rainfall Forecast (Total precipitation for 24 hrs)



## Significant wave height (in meters)



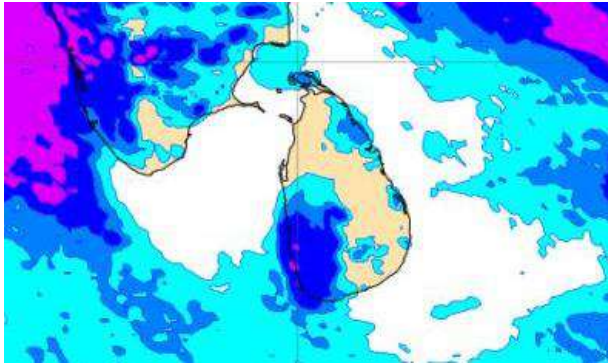
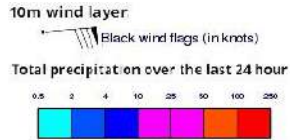
## Wind Gust (m/s)



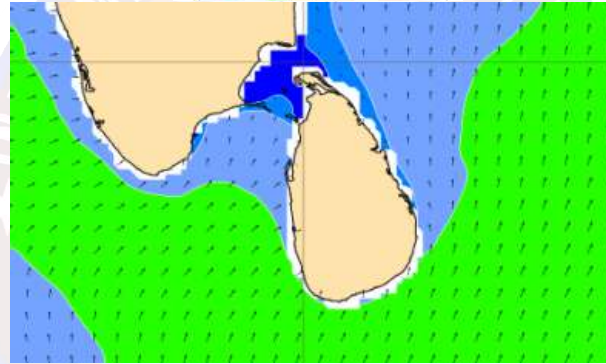
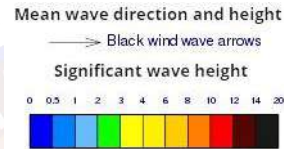
Showers or thundershowers will occur at a few places in the sea areas off the coast extending from Puttalam to Matara via Colombo and Galle.

Wind speed will be 25-35 kmph in the sea areas around the island. The sea area extending from Hambantota to Pottuvil can be rough at times as the wind speed may increase up to 50-55 kmph at times.

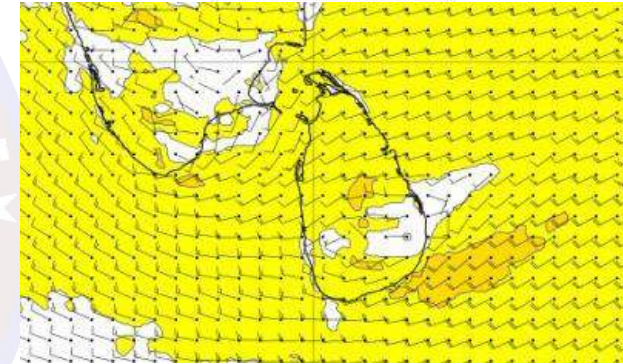
## Wind and Rainfall Forecast (Total precipitation for 24 hrs)



## Significant wave height (in meters)



## Wind Gust (m/s)



Showers or thundershowers will occur at a few places in the sea areas off the coast extending from Puttalam to Matara via Colombo and Galle.

Wind speed will be 25-35 kmph in the sea areas around the island. The sea area extending from Hambantota to Pottuvil can be rough at times as the wind speed may increase up to 50-55 kmph at times.

**\*\*Temporarily strong gusty winds and rough seas can be expected during thundershowers.**





Thank you!