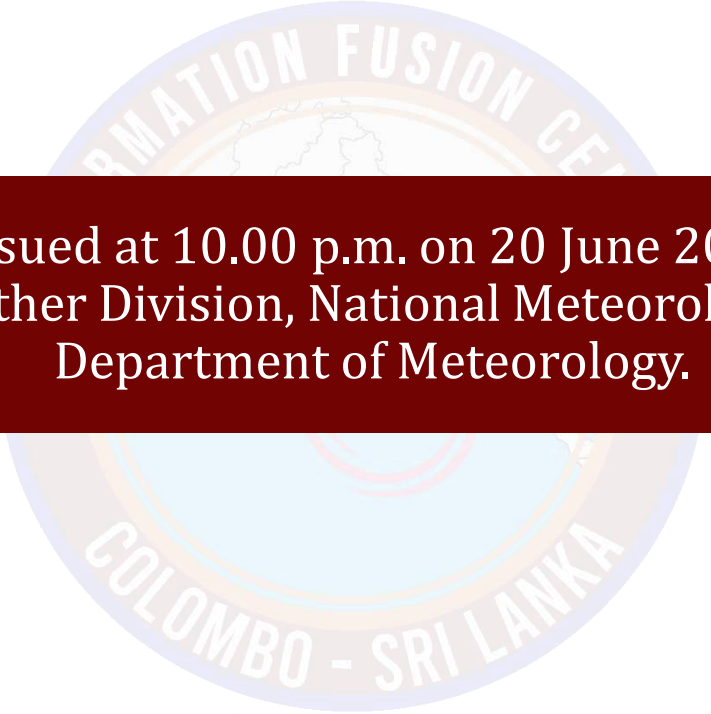




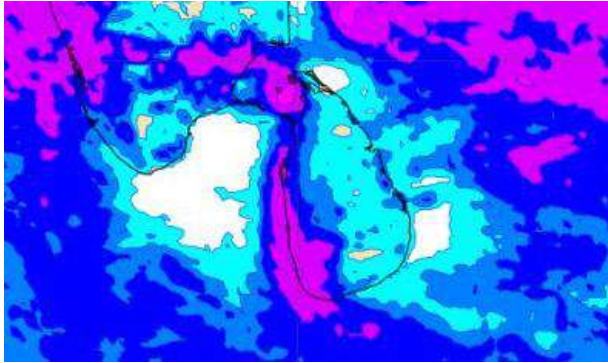
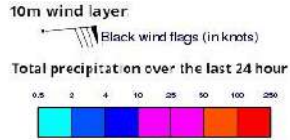
INFORMATION FUSION CENTRE COLOMBO

08 DAY FORECAST FOR COASTAL AREAS AROUND SRI LANKA

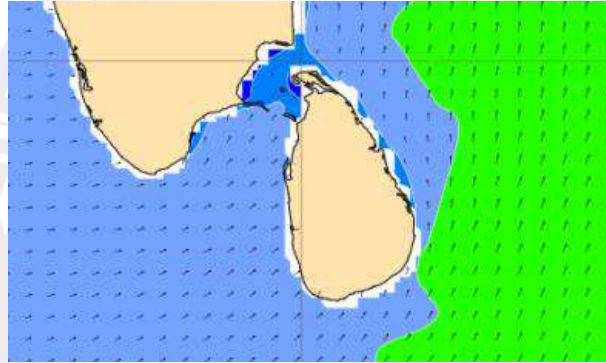
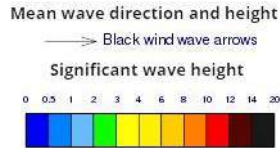


Issued at 10.00 p.m. on 20 June 2023
Marine Weather Division, National Meteorological Centre,
Department of Meteorology.

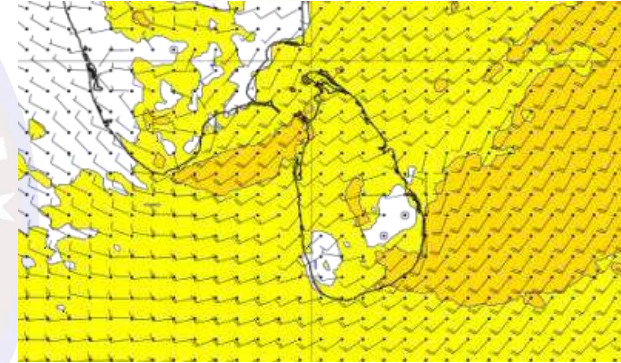
Wind and Rainfall Forecast (Total precipitation for 24 hrs)



Significant wave height (in meters)



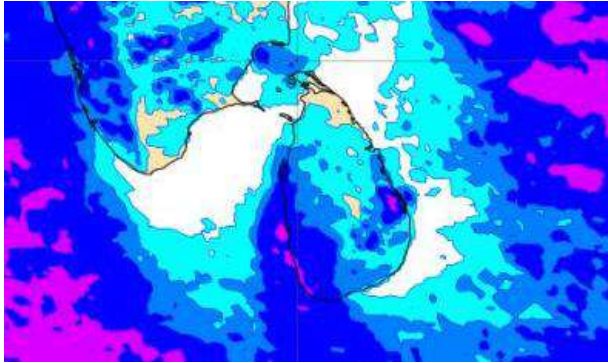
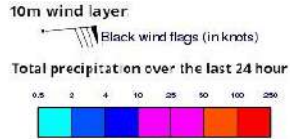
Wind Gust (m/s)



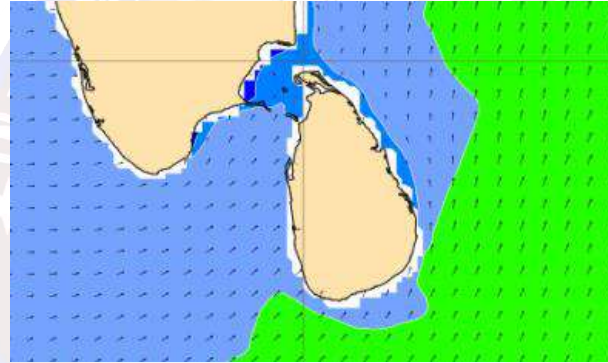
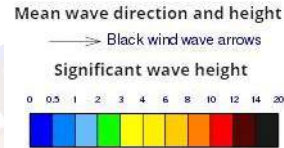
Showers or thundershowers will occur at several places in the sea areas off the coast extending from Kankasanturai to Matara via Puttalam, Colombo and Galle.

Wind speed will be 25-35 kmph in the sea areas around the island. The sea area extending from Hambantota to Pottuvil can be rough at times as the wind speed may increase up to 60 kmph at times. The sea areas off the coast extending from Trincomalee to Hambantota via Kankasanturai, Mannar, Puttalam, Colombo and Galle can be fairly rough at times as the wind speed may increase up to 40-50 kmph at times

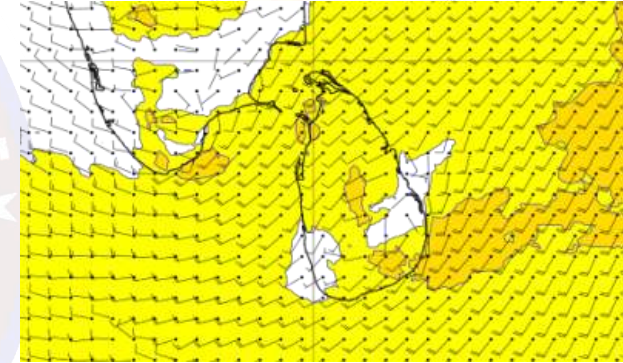
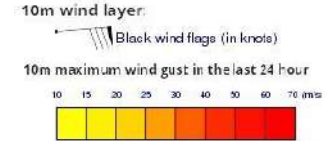
Wind and Rainfall Forecast (Total precipitation for 24 hrs)



Significant wave height (in meters)



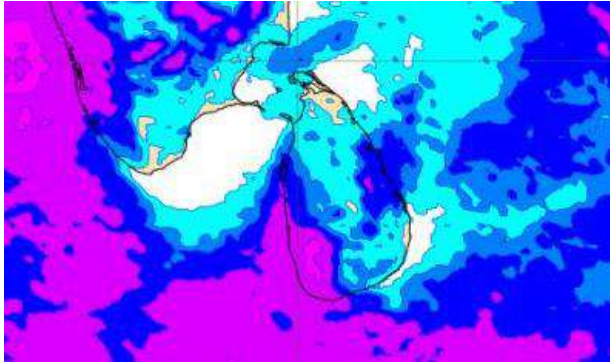
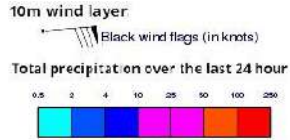
Wind Gust (m/s)



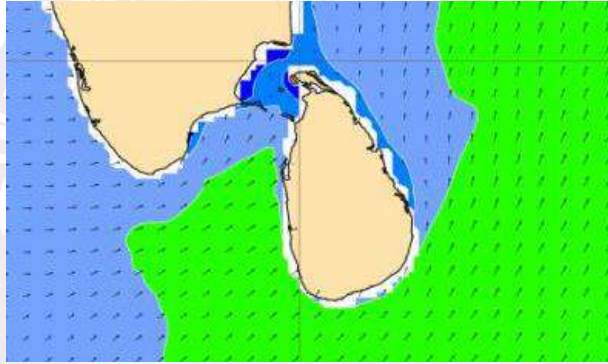
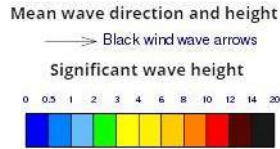
Showers or thundershowers will occur at several places in the sea areas off the coast extending from Kankasanturai to Matara via Puttalam, Colombo and Galle.

Wind speed will be 25-35 kmph in the sea areas around the island. The sea area extending from Hambantota to Pottuvil can be rough at times as the wind speed may increase up to 60 kmph at times. The sea areas off the coast extending from Trincomalee to Hambantota via Kankasanturai, Mannar, Puttalam, Colombo and Galle can be fairly rough at times as the wind speed may increase up to 40-50 kmph at times.

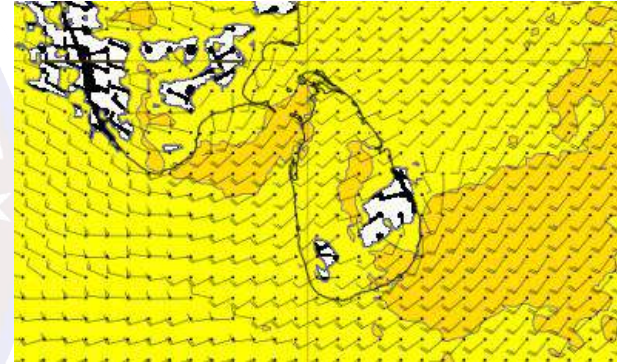
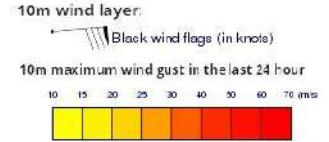
Wind and Rainfall Forecast (Total precipitation for 24 hrs)



Significant wave height (in meters)



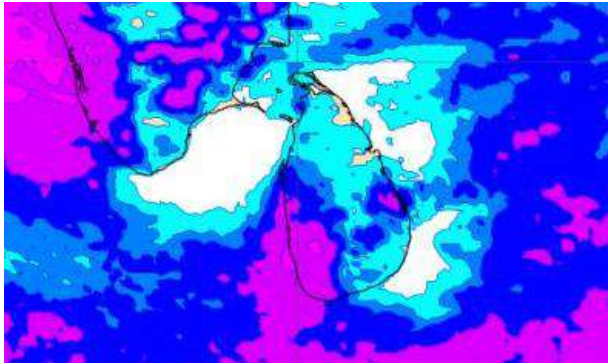
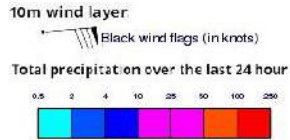
Wind Gust (m/s)



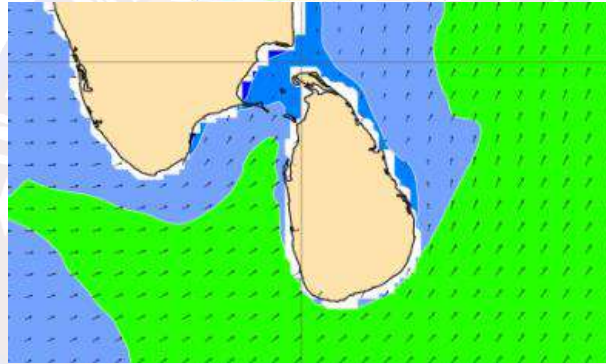
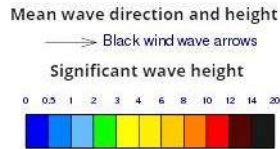
Showers or thundershowers will occur at several places in the sea areas off the coast extending from Puttalam to Matara via Colombo and Galle.

Wind speed will be 25-35 kmph in the sea areas around the island. The sea area extending from Hambantota to Pottuvil can be rough at times as the wind speed may increase up to 50-55 kmph at times. The sea areas off the coast extending from Trincomalee to Hambantota via Kankasanturai, Mannar, Puttalam, Colombo and Galle can be fairly rough at times as the wind speed may increase up to 40-50 kmph at times.

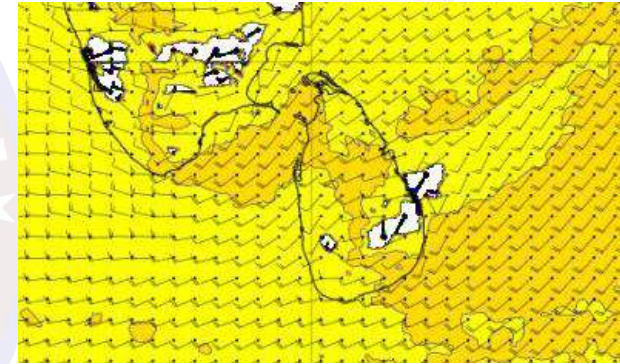
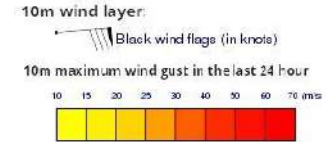
Wind and Rainfall Forecast (Total precipitation for 24 hrs)



Significant wave height (in meters)



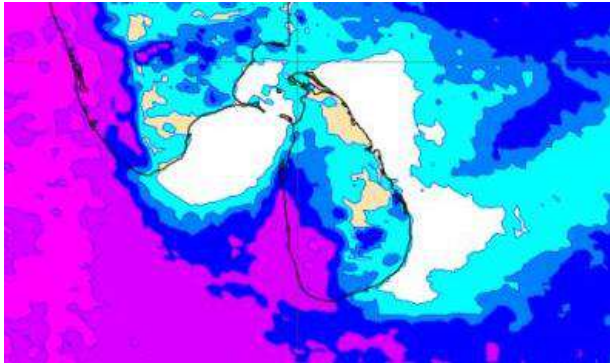
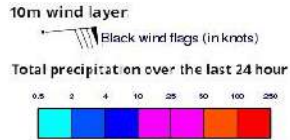
Wind Gust (m/s)



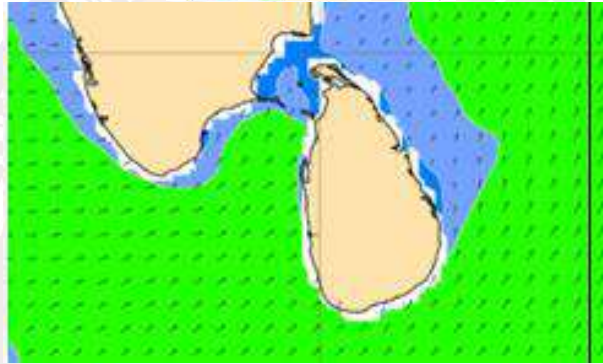
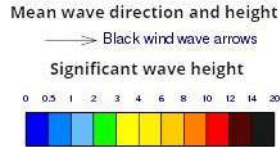
Showers or thundershowers will occur at several places in the sea areas off the coast extending from Puttalam to Matara via Colombo and Galle.

Wind speed will be 25-35 kmph in the sea areas around the island. The sea area extending from Hambantota to Pottuvil can be rough at times as the wind speed may increase up to 50-55 kmph at times. The sea areas off the coast extending from Trincomalee to Hambantota via Kankasanturai, Mannar, Puttalam, Colombo and Galle can be fairly rough at times as the wind speed may increase up to 40-50 kmph at times.

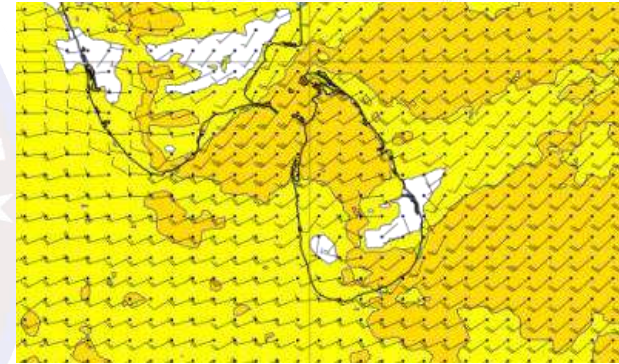
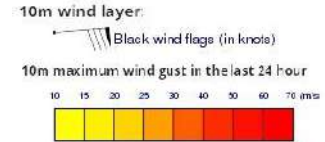
Wind and Rainfall Forecast (Total precipitation for 24 hrs)



Significant wave height (in meters)



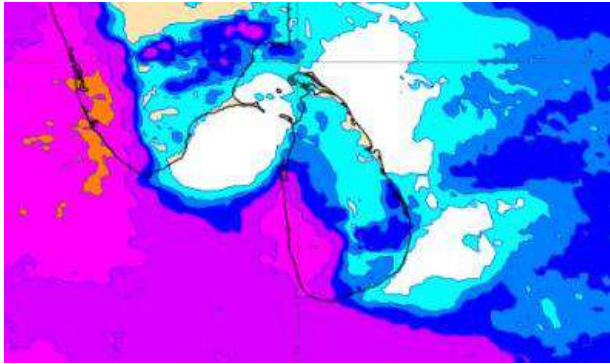
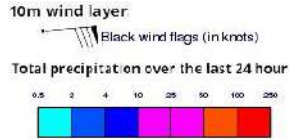
Wind Gust (m/s)



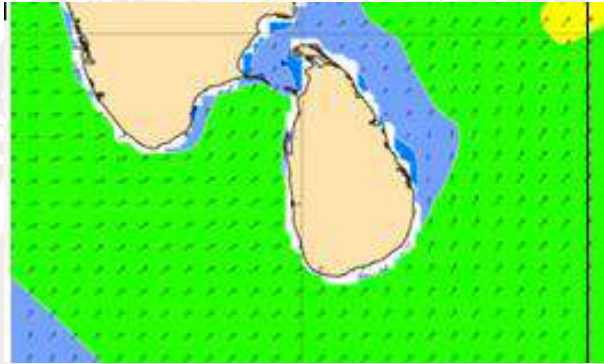
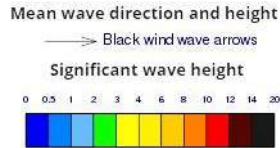
Showers or thundershowers will occur at several places in the sea areas off the coast extending from Puttalam to Matara via Colombo and Galle.

Wind speed will be 25-35 kmph in the sea areas around the island. The sea area extending from Hambantota to Pottuvil can be rough at times as the wind speed may increase up to 50-55 kmph at times. The sea areas off the coast extending from Trincomalee to Hambantota via Kankasanturai, Mannar, Puttalam, Colombo and Galle can be fairly rough at times as the wind speed may increase up to 40-50 kmph at times.

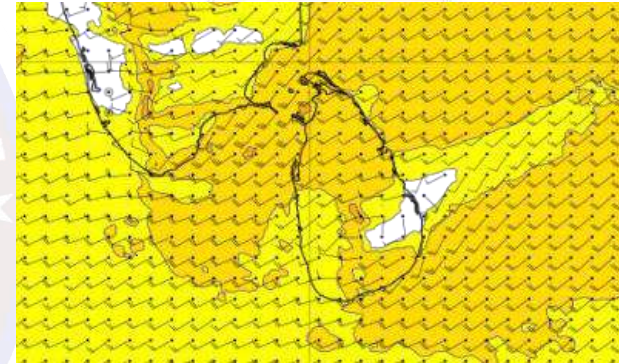
Wind and Rainfall Forecast (Total precipitation for 24 hrs)



Significant wave height (in meters)



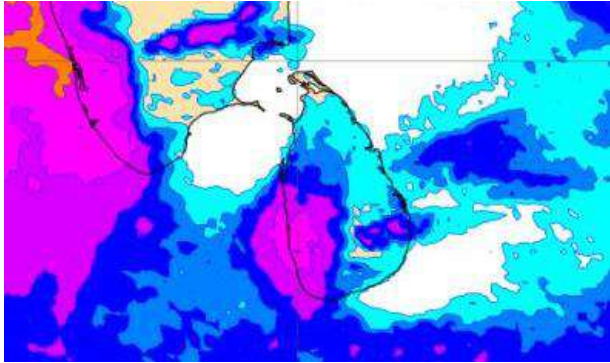
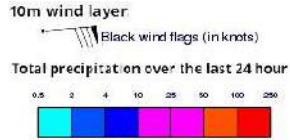
Wind Gust (m/s)



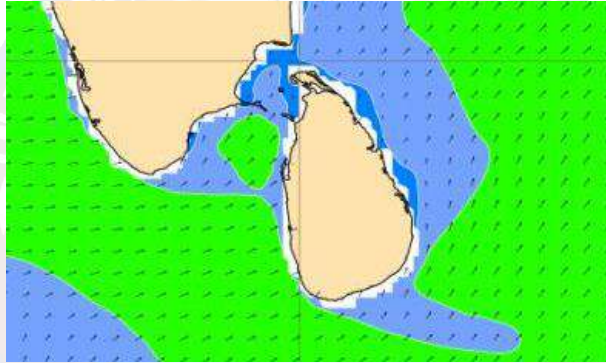
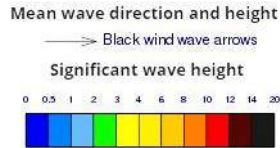
Showers or thundershowers will occur at several places in the sea areas off the coast extending from Puttalam to Matara via Colombo and Galle.

Wind speed will be 30-40 kmph in the sea areas around the island. The sea area extending from Trincomalee to Puttalam via Kankasanturai, Mannar and from Hambantota to Pottuvil can be rough at times as the wind speed may increase up to 50-60 kmph at times. The sea areas off the coast extending from Puttalam to Hambantota via Colombo and Galle can be fairly rough at times as the wind speed may increase up to 40-50 kmph at times.

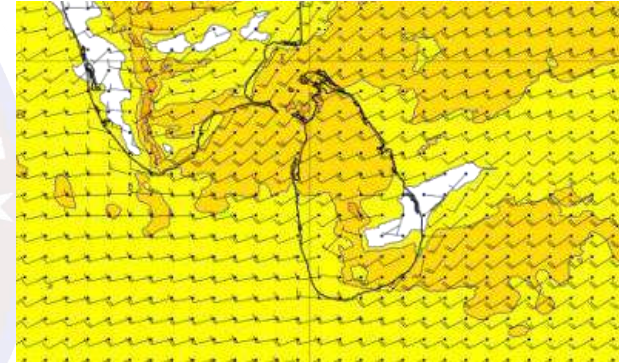
Wind and Rainfall Forecast (Total precipitation for 24 hrs)



Significant wave height (in meters)



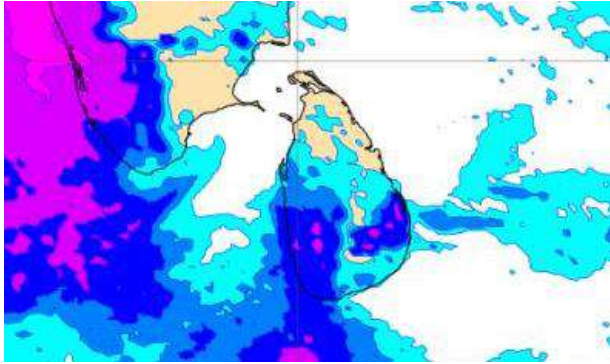
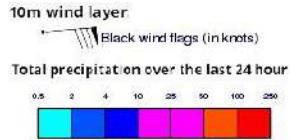
Wind Gust (m/s)



Showers or thundershowers will occur at several places in the sea areas off the coast extending from Puttalam to Matara via Colombo and Galle.

Wind speed will be 30-40 kmph in the sea areas around the island. The sea area extending from Trincomalee to Puttalam via Kankasanturai, Mannar and from Hambantota to Pottuvil can be rough at times as the wind speed may increase up to 50-60 kmph at times. The sea areas off the coast extending from Puttalam to Hambantota via Colombo and Galle can be fairly rough at times as the wind speed may increase up to 40-50 kmph at times.

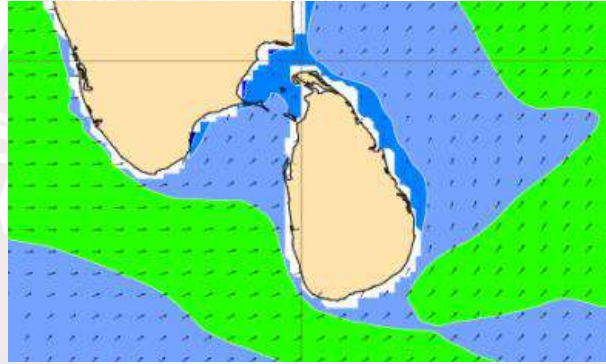
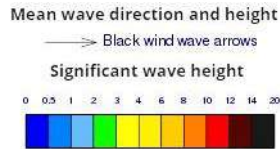
Wind and Rainfall Forecast (Total precipitation for 24 hrs)



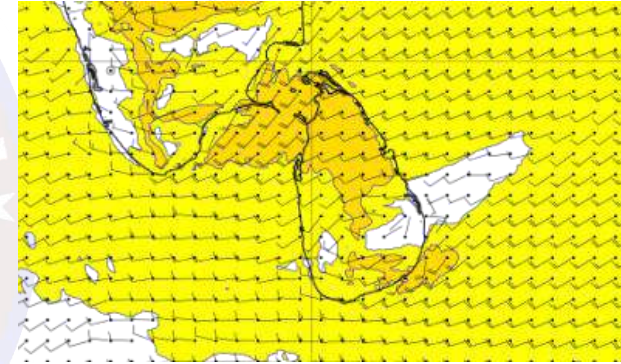
Showers or thundershowers will occur at several places in the sea areas off the coast extending from Puttalam to Matara via Colombo and Galle.

Wind speed will be 30-40 kmph in the sea areas around the island. The sea area extending from Trincomalee to Puttalam via Kankasanturai, Mannar and from Hambantota to Pottuvil can be rough at times as the wind speed may increase up to 50-60 kmph at times. The sea areas off the coast extending from Puttalam to Hambantota via Colombo and Galle can be fairly rough at times as the wind speed may increase up to 40-50 kmph at times.

Significant wave height (in meters)



Wind Gust (m/s)





Thank you!