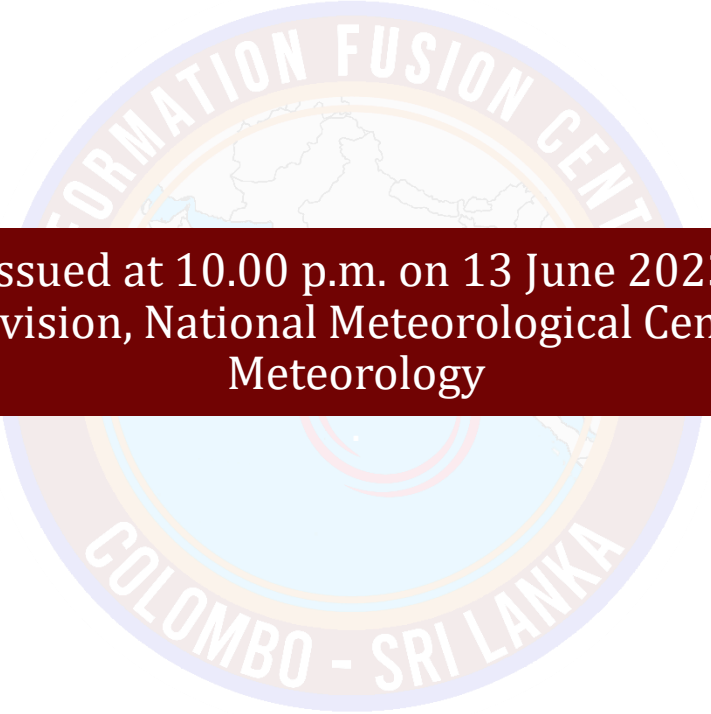




INFORMATION FUSION CENTRE COLOMBO

08 DAY FORECAST FOR COASTAL AREAS AROUND SRI LANKA

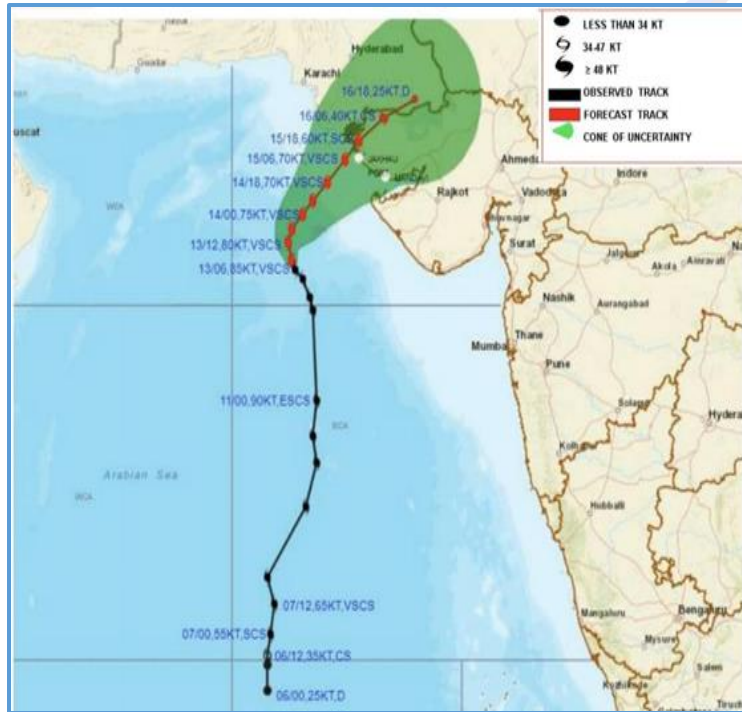
The logo of the Information Fusion Centre is a circular emblem. It features a map of Sri Lanka in the center, surrounded by a blue ring. The text 'INFORMATION FUSION CENTRE' is written in a light blue arc at the top, and 'COLOMBO - SRI LANKA' is written in a light blue arc at the bottom. The entire logo is semi-transparent and serves as a background for the text.

Issued at 10.00 p.m. on 13 June 2023
Marine Weather Division, National Meteorological Centre, Department of
Meteorology

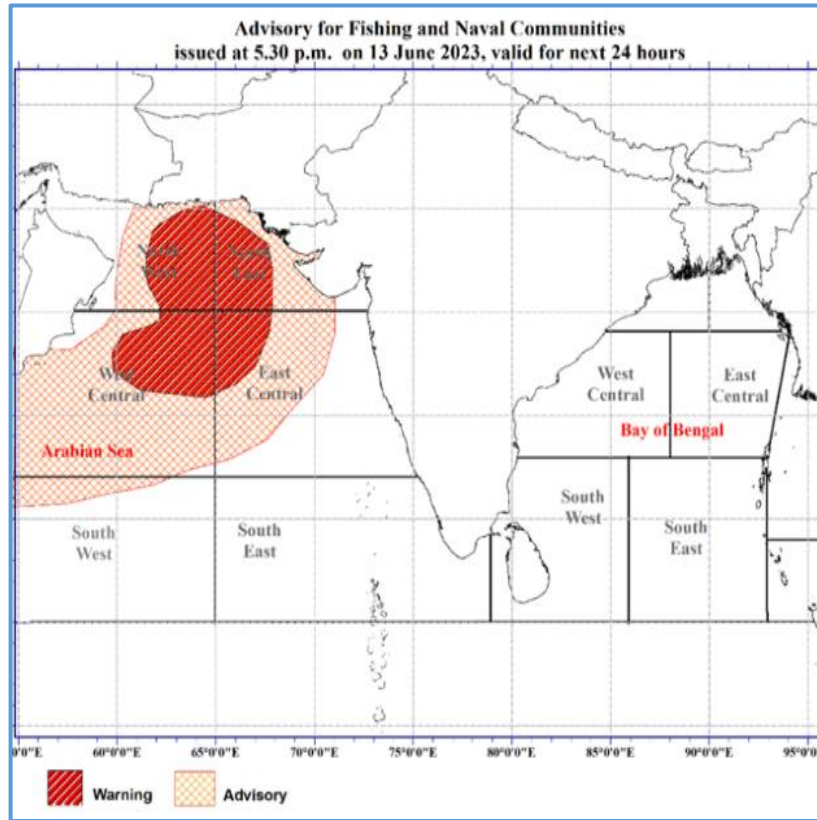
13th June 2023

Please be aware

The very severe cyclonic storm “BIPARJOY” over east – central Arabian sea was locked near latitude 21.0° N and longitude 66.7°E at 1130 hours of 13th June 2023. It would move nearly north-eastwards during next 24 hours.



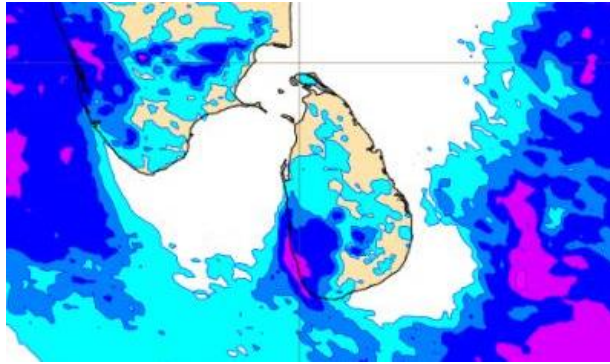
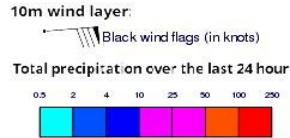
- Wind speed will be 140-150 kmph and can increase up to 160-170 kmph in sea areas bounded by 16N-25N and 62E-72E during next 24 hours due to this system.
- Heavy showers or thunder showers, high very high at times seas can also be expected in above sea areas



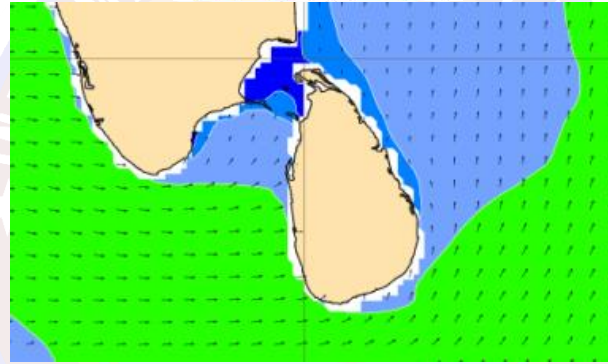
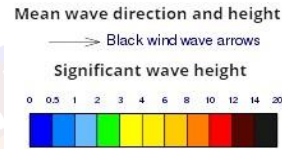
Actions Required:

- Naval and fishing communities are advised not to venture into the areas bounded by (16N-25E) until further notice.
- Those who are out at aforementioned sea regions are advised to return to coasts or moved safer areas immediately.
- Fishing and naval community are requested to be attentive to forecasts issued by the Department of meteorology in this regard.

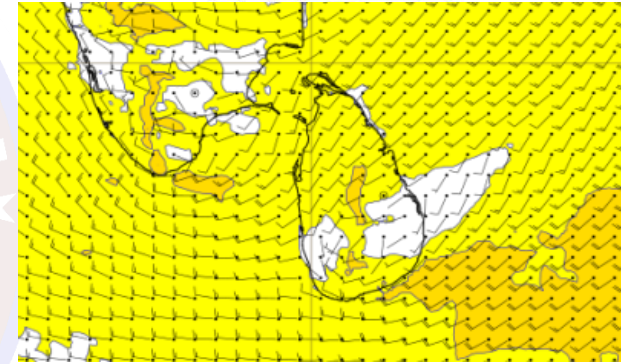
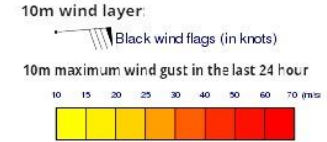
Wind and Rainfall Forecast (Total precipitation for 24 hrs)



Significant wave height (in meters)

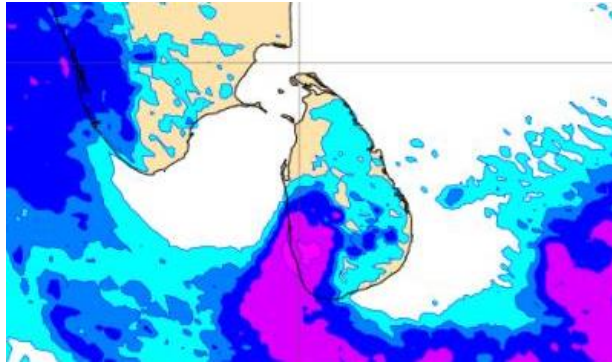
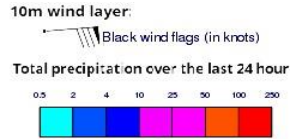


Wind Gust (m/s)

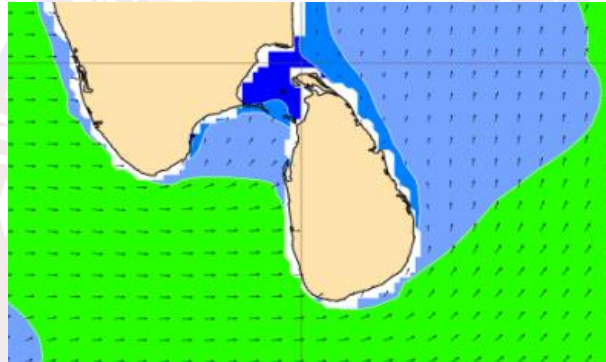
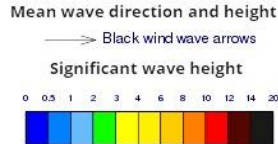


- Showers or thundershowers will occur at several places in the sea areas off the coast extending from Puttalam to Matara via Colombo and Galle.
- Wind speed will be 25-35 kmph in the sea areas around the island. The sea area extending from Hambantota to Pottuvil can be rough at times as the wind speed may increase up to 50-60 kmph at times. The sea areas off the coast extending from Trincomalee to Hambantota via Kankasanturai, Mannar, Puttalam, Colombo and Galle can be fairly rough at times as the wind speed may increase up to 40-50 kmph at times.

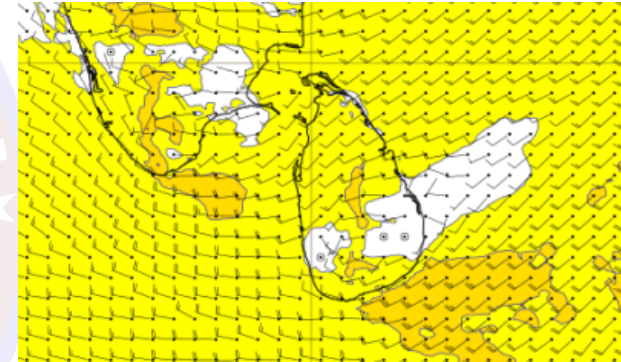
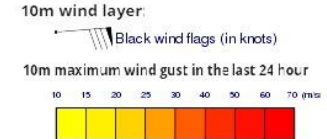
Wind and Rainfall Forecast (Total precipitation for 24 hrs)



Significant wave height (in meters)

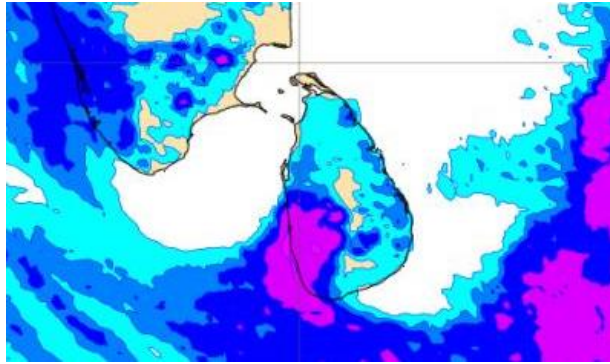
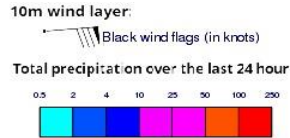


Wind Gust (m/s)

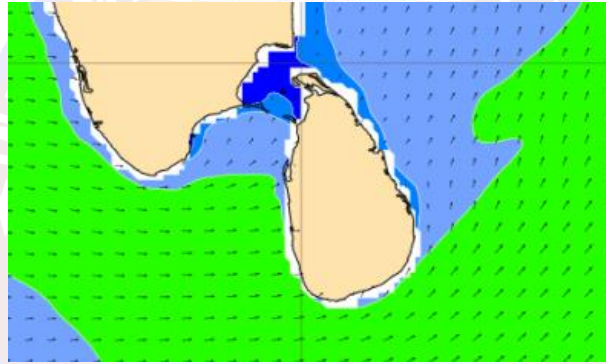
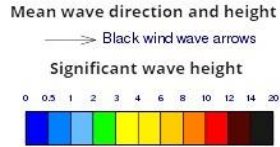


- Showers or thundershowers will occur at several places in the sea areas off the coast extending from Puttalam to Matara via Colombo and Galle.
- Wind speed will be 25-35 kmph in the sea areas around the island. The sea area extending from Hambantota to Pottuvil can be rough at times as the wind speed may increase up to 50-60 kmph at times. The sea areas off the coast extending from Trincomalee to Hambantota via Kankasanturai, Mannar, Puttalam, Colombo and Galle can be fairly rough at times as the wind speed may increase up to 40-50 kmph at times.

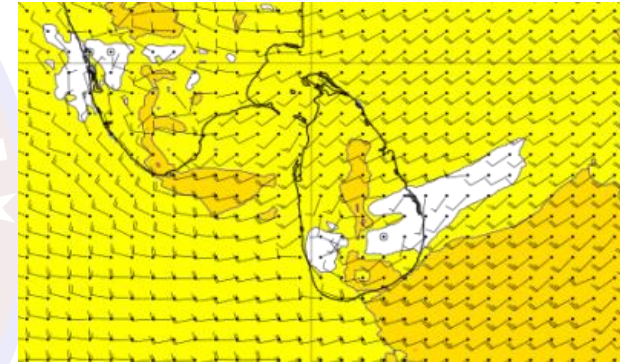
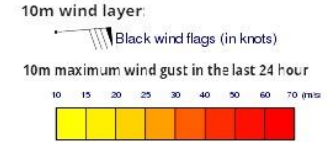
Wind and Rainfall Forecast (Total precipitation for 24 hrs)



Significant wave height (in meters)

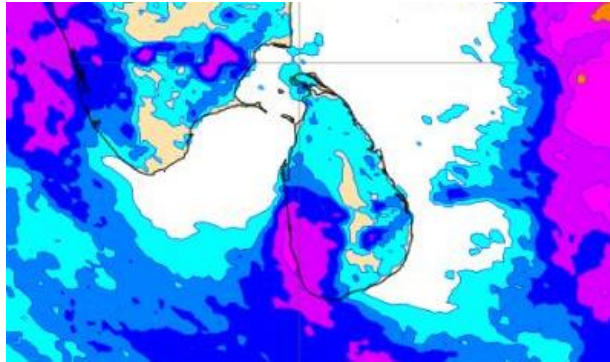
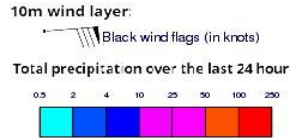


Wind Gust (m/s)

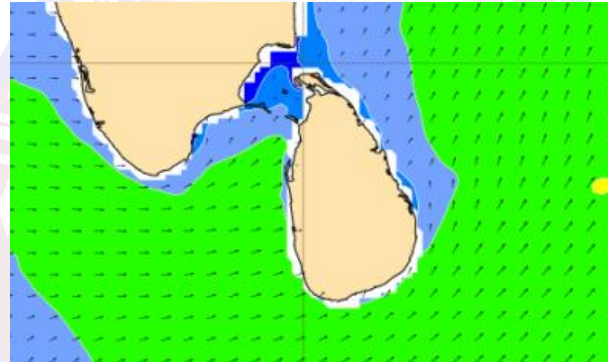
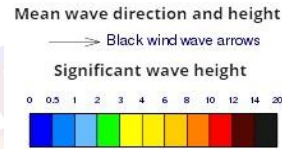


- Showers or thundershowers will occur at several places in the sea areas off the coast extending from Puttalam to Matara via Colombo and Galle
- Wind speed will be 25-35 kmph in the sea areas around the island. The sea area extending from Hambantota to Pottuvil can be rough at times as the wind speed may increase up to 50-60 kmph at times. The sea areas off the coast extending from Trincomalee to Hambantota via Kankasanturai, Mannar, Puttalam, Colombo and Galle can be fairly rough at times as the wind speed may increase up to 40-50 kmph at times.

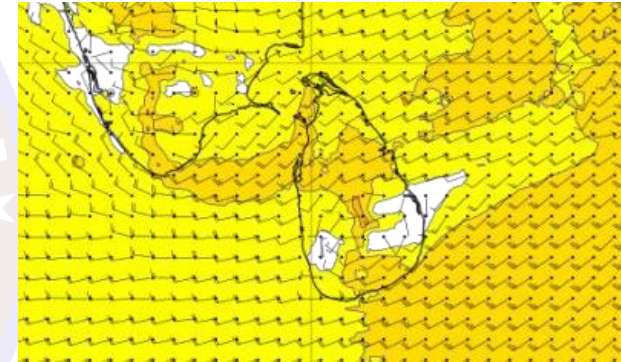
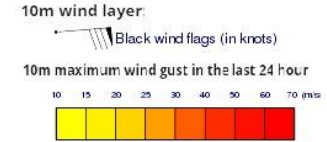
Wind and Rainfall Forecast (Total precipitation for 24 hrs)



Significant wave height (in meters)

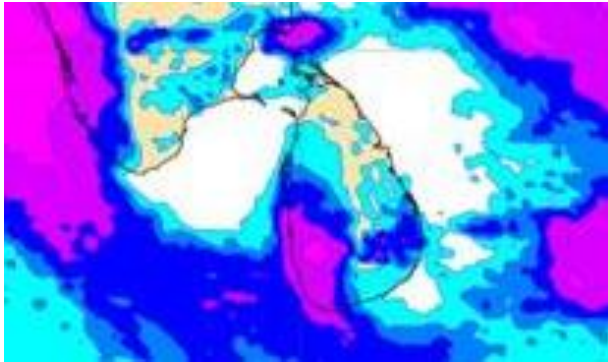
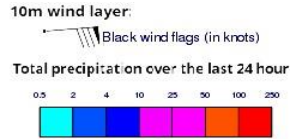


Wind Gust (m/s)

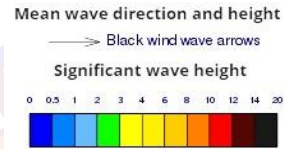


- Showers or thundershowers will occur at several places in the sea areas off the coast extending from Puttalam to Matara via Colombo and Galle.
- Wind speed will be 25-35 kmph in the sea areas around the island. The sea area extending from Hambantota to Pottuvil can be rough at times as the wind speed may increase up to 50-60 kmph at times. The sea areas off the coast extending from Trincomalee to Hambantota via Kankasanturai, Mannar, Puttalam, Colombo and Galle can be fairly rough at times as the wind speed may increase up to 40-50 kmph at times.

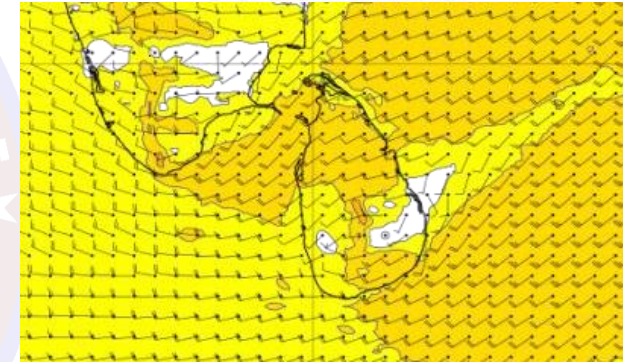
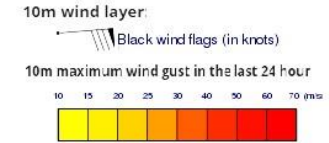
Wind and Rainfall Forecast (Total precipitation for 24 hrs)



Significant wave height (in meters)

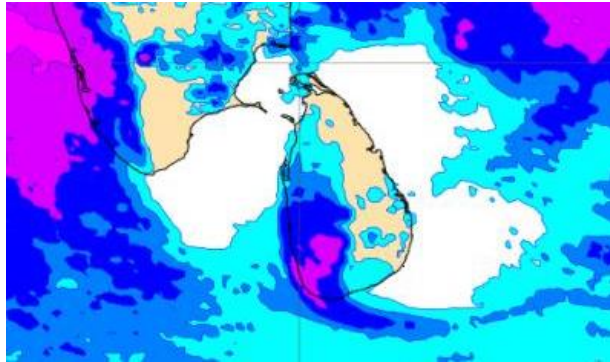
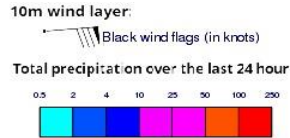


Wind Gust (m/s)

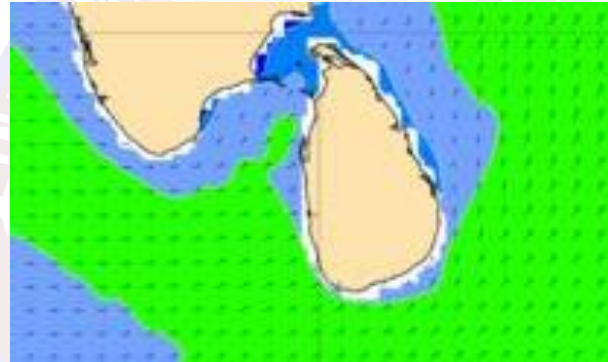
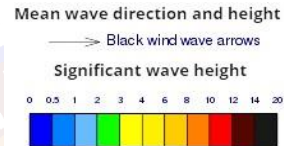


- Showers or thundershowers will occur at several places in the sea areas off the coast extending from Puttalam to Matara via Colombo and Galle.
- Wind speed will be 25-35 kmph in the sea areas around the island. The sea area extending from Hambantota to Pottuvil can be rough at times as the wind speed may increase up to 50-60 kmph at times. The sea areas off the coast extending from Trincomalee to Hambantota via Kankasanturai, Mannar, Puttalam, Colombo and Galle can be fairly rough at times as the wind speed may increase up to 40-50 kmph at times.

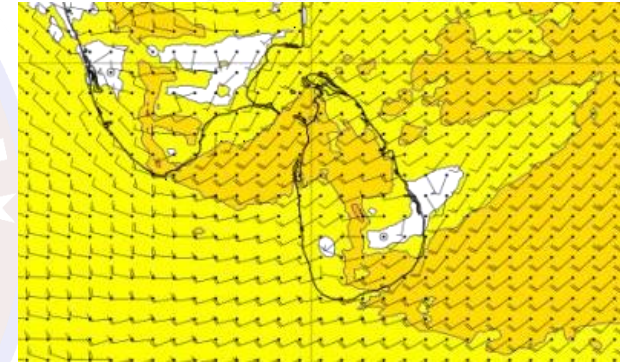
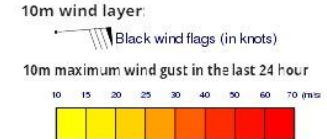
Wind and Rainfall Forecast (Total precipitation for 24 hrs)



Significant wave height (in meters)

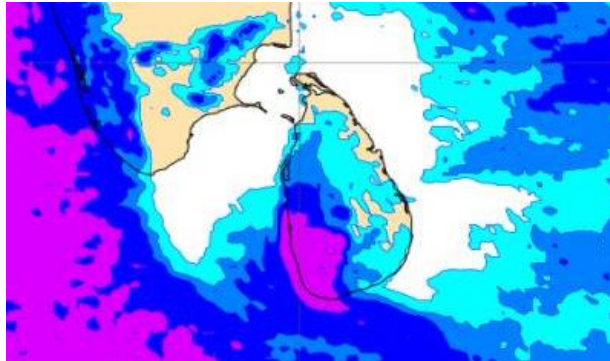
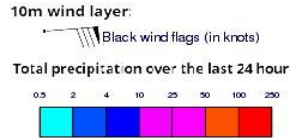


Wind Gust (m/s)

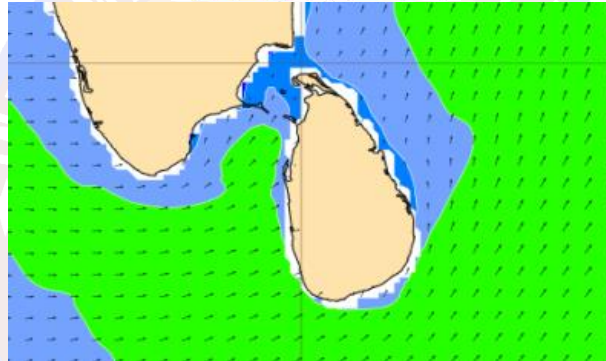
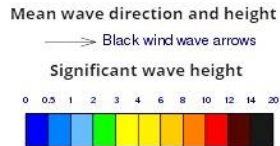


- Showers or thundershowers will occur at several places in the sea areas off the coast extending from Puttalam to Matara via Colombo and Galle.
- Wind speed will be 25-35 kmph in the sea areas around the island. The sea area extending from Hambantota to Pottuvil can be rough at times as the wind speed may increase up to 50-60 kmph at times. The sea areas off the coast extending from Kankasanturai to Hambantota via Mannar, Puttalam, Colombo and Galle can be fairly rough at times as the wind speed may increase up to 40-50 kmph at times.

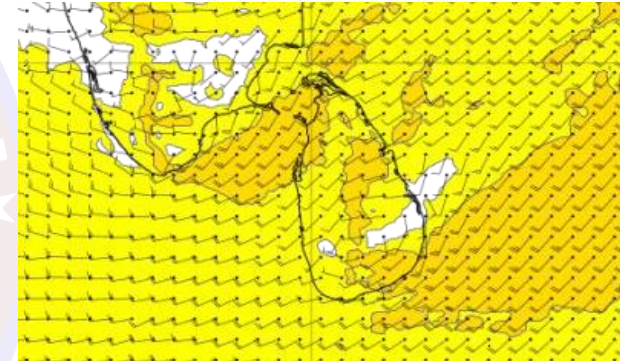
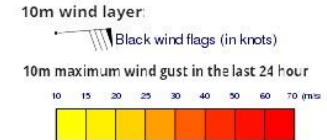
Wind and Rainfall Forecast (Total precipitation for 24 hrs)



Significant wave height (in meters)

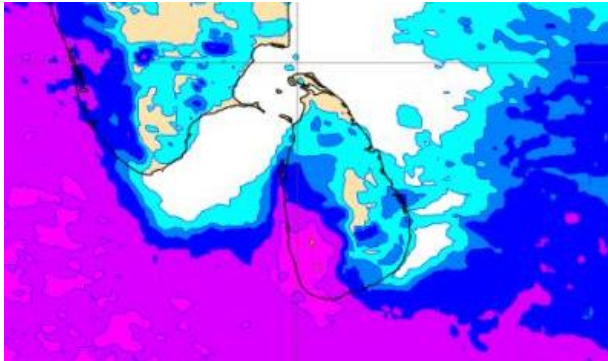
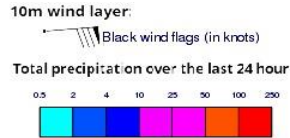


Wind Gust (m/s)

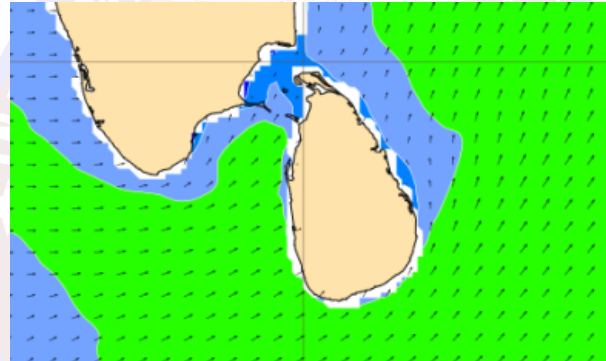
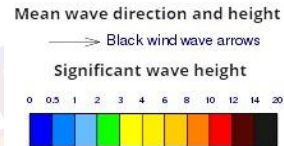


- Showers or thundershowers will occur at several places in the sea areas off the coast extending from Puttalam to Matara via Colombo and Galle.
- Wind speed will be 25-35 kmph in the sea areas around the island. The sea area extending from Hambantota to Pottuvil can be rough at times as the wind speed may increase up to 50-60 kmph at times. The sea areas off the coast extending from Kankasanturai to Hambantota via Mannar, Puttalam, Colombo and Galle can be fairly rough at times as the wind speed may increase up to 40-50 kmph at times.

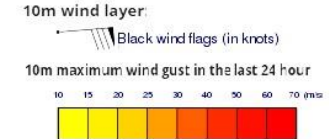
Wind and Rainfall Forecast (Total precipitation for 24 hrs)



Significant wave height (in meters)



Wind Gust (m/s)



- Showers or thundershowers will occur at several places in the sea areas off the coast extending from Puttalam to Matara via Colombo and Galle.
- Wind speed will be 25-35 kmph in the sea areas around the island. The sea area extending from Hambantota to Pottuvil can be rough at times as the wind speed may increase up to 50-60 kmph at times. The sea areas off the coast extending from Trincomalee to Hambantota via Kankasanturai, Mannar, Puttalam, Colombo and Galle can be fairly rough at times as the wind speed may increase up to 40-50 kmph at times.