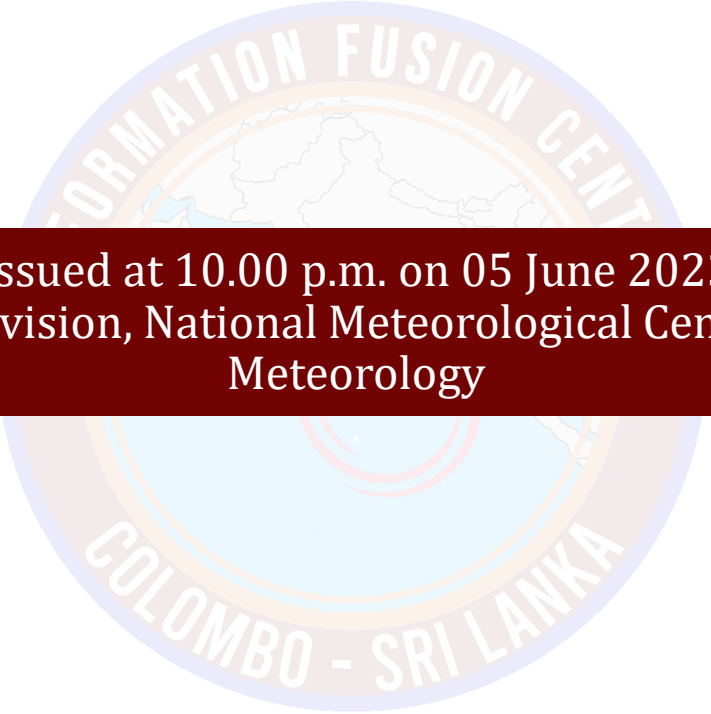




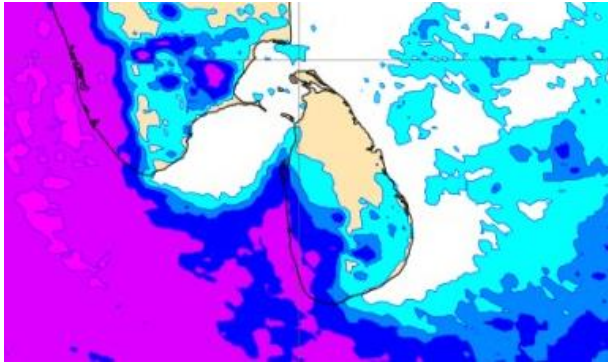
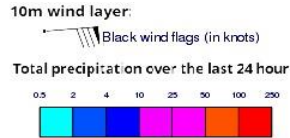
INFORMATION FUSION CENTRE COLOMBO

08 DAY FORECAST FOR COASTAL AREAS AROUND SRI LANKA

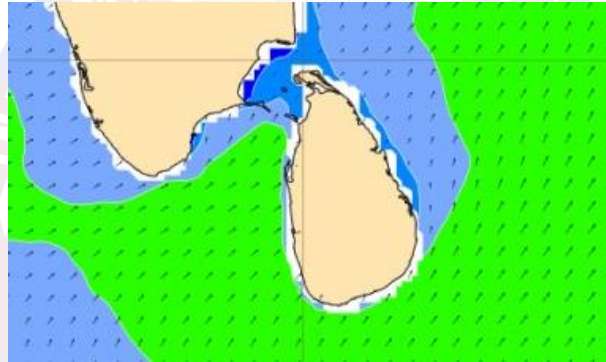
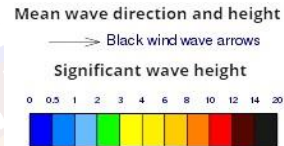
The logo of the Information Fusion Centre is a circular emblem. It features a map of Sri Lanka in the center, surrounded by a blue ring. The text 'INFORMATION FUSION CENTRE' is written in a light blue arc at the top, and 'COLOMBO - SRI LANKA' is written in a light blue arc at the bottom. The logo is semi-transparent and serves as a background for the central text.

Issued at 10.00 p.m. on 05 June 2023
Marine Weather Division, National Meteorological Centre, Department of
Meteorology

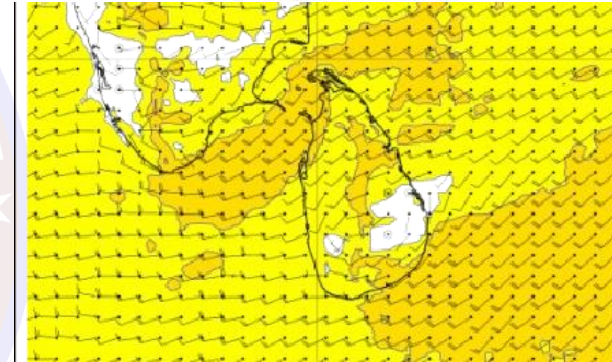
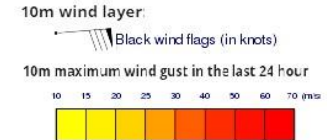
Wind and Rainfall Forecast (Total precipitation for 24 hrs)



Significant wave height (in meters)

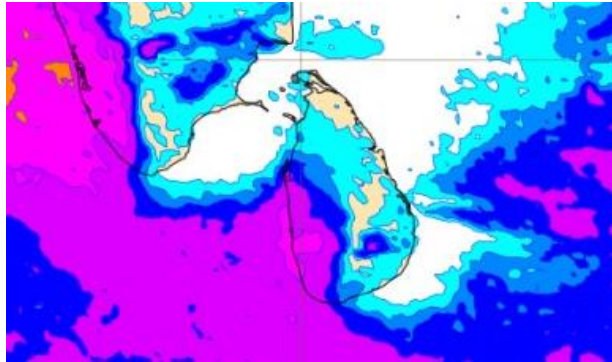
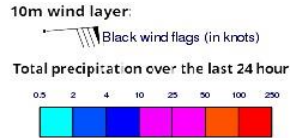


Wind Gust (m/s)

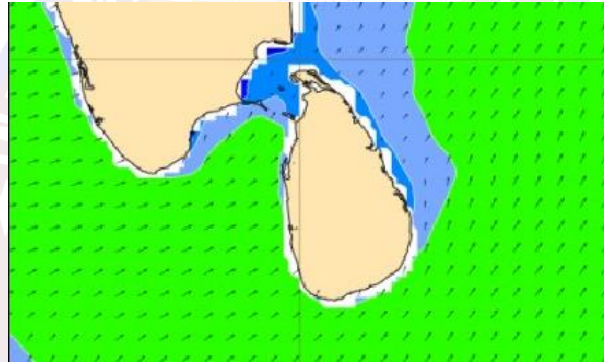
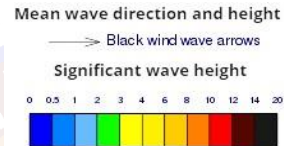


- Showers or thundershowers will occur at times in the sea area extending from Puttalam to Matara via Colombo and Galle.
- Wind speed will be 25-35 kmph in the sea areas around the island. The sea area extending from Puttalam to Trincomalee via Kankasanturai and in the sea areas off the coast extending from Galle to Pottuvil via Hambantota can be rough at times as the wind speed may increase up to 50-60 kmph at times.

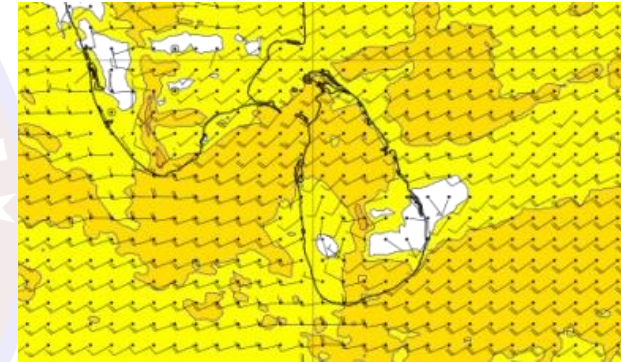
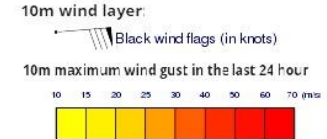
Wind and Rainfall Forecast (Total precipitation for 24 hrs)



Significant wave height (in meters)

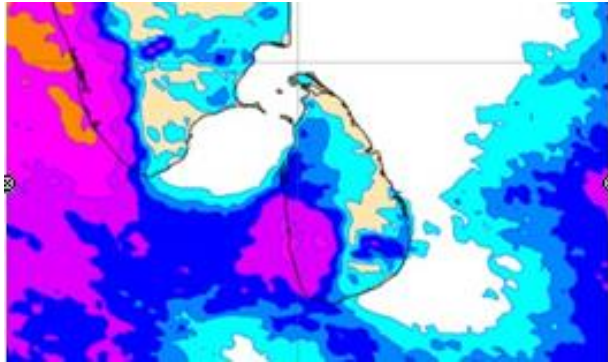
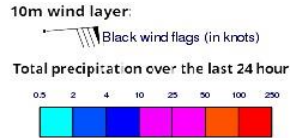


Wind Gust (m/s)

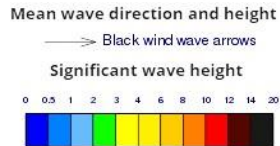


- Showers or thundershowers will occur at times in the sea area extending from Puttalam to Matara via Colombo and Galle..
- Wind speed will be 25-35 kmph in the sea areas around the island. The sea area extending from Puttalam to Kankasanturai via Mannar and in the sea areas off the coast extending from Galle to Pottuvil via Hambantota can be rough at times as the wind speed may increase up to 50-60 kmph at times.

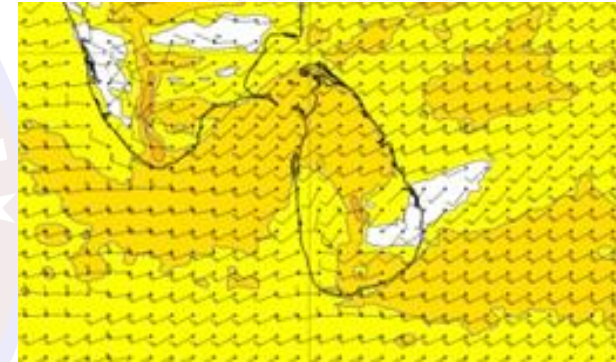
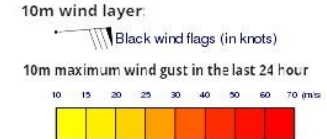
Wind and Rainfall Forecast (Total precipitation for 24 hrs)



Significant wave height (in meters)

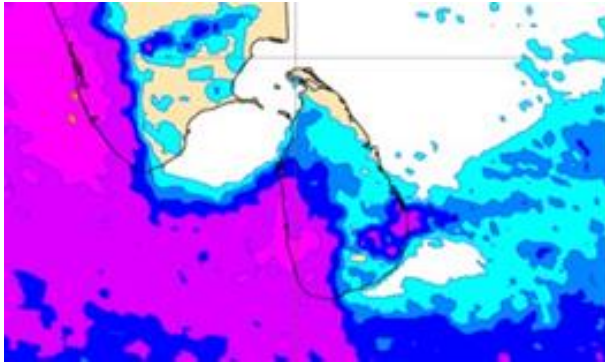
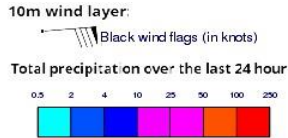


Wind Gust (m/s)

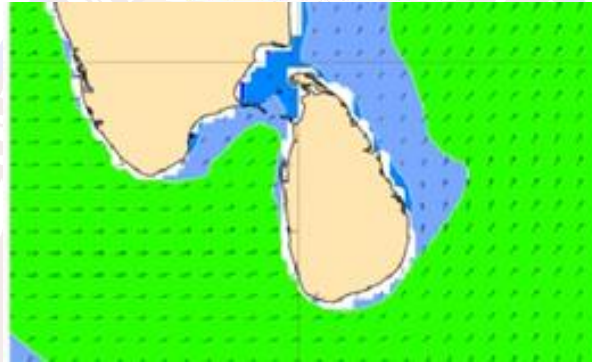
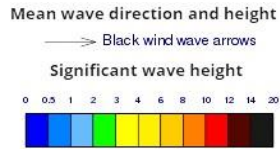


- Showers or thundershowers will occur at times in the sea area extending from Puttalam to Matara via Colombo and Galle.
- Wind speed will be 25-35 kmph in the sea areas around the island. The sea area extending from Puttalam to Kankasanturai via Mannar and in the sea areas off the coast extending from Galle to Pottuvil via Hambantota can be rough at times as the wind speed may increase up to 50-60 kmph at times.

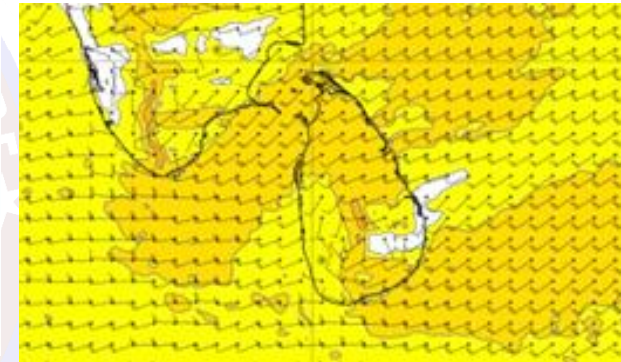
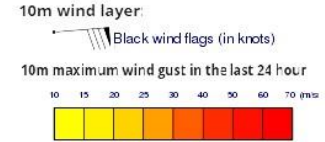
Wind and Rainfall Forecast (Total precipitation for 24 hrs)



Significant wave height (in meters)

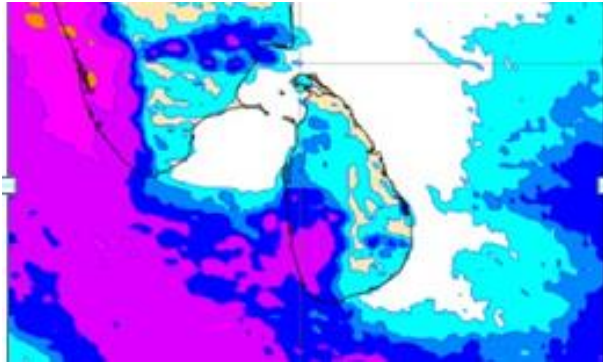
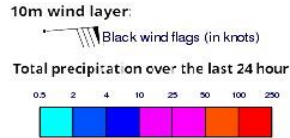


Wind Gust (m/s)

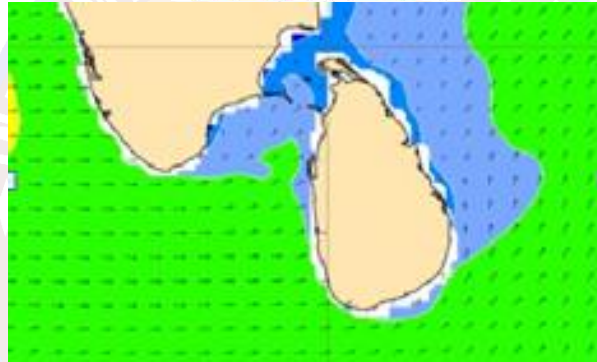
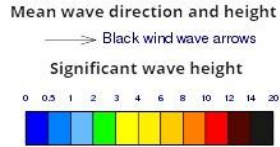


- Showers or thundershowers will occur at times in the sea area extending from Puttalam to Matara via Colombo and Galle.
- Wind speed will be 30-40 kmph in the sea areas around the island. The sea area extending from Puttalam to Trincomalee via Kankasanturai and in the sea areas off the coast extending from Galle to Pottuvil via Hambantota can be rough at times as the wind speed may increase up to 50-60 kmph at times.

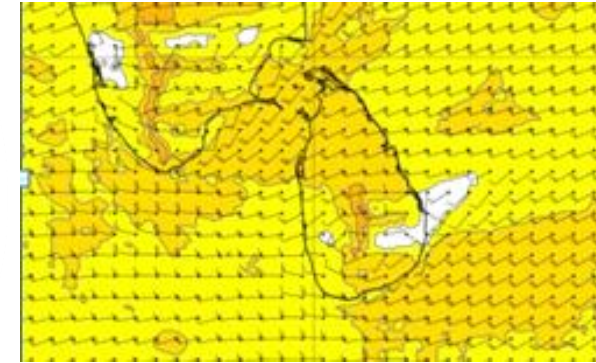
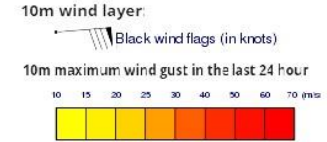
Wind and Rainfall Forecast (Total precipitation for 24 hrs)



Significant wave height (in meters)

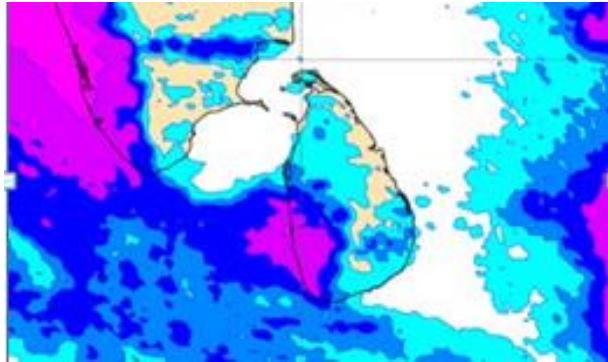
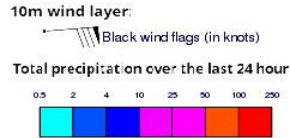


Wind Gust (m/s)

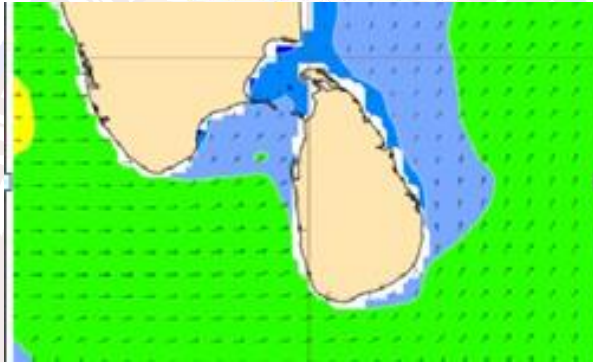
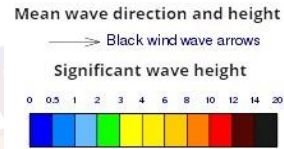


- Showers or thundershowers will occur at times in the sea area extending from Puttalam to Matara via Colombo and Galle.
- Wind speed will be 30-40 kmph in the sea areas around the island. The sea area extending from Puttalam to Trincomalee via Kankasanturai and in the sea areas off the coast extending from Galle to Pottuvil via Hambantota can be rough at times as the wind speed may increase up to 50-60 kmph at times.

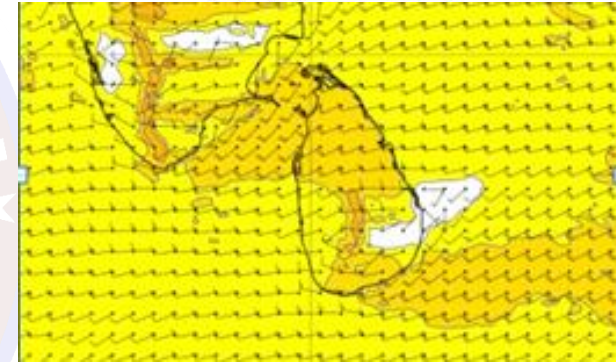
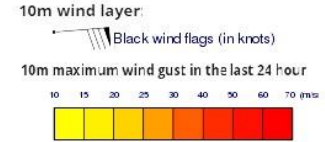
Wind and Rainfall Forecast (Total precipitation for 24 hrs)



Significant wave height (in meters)

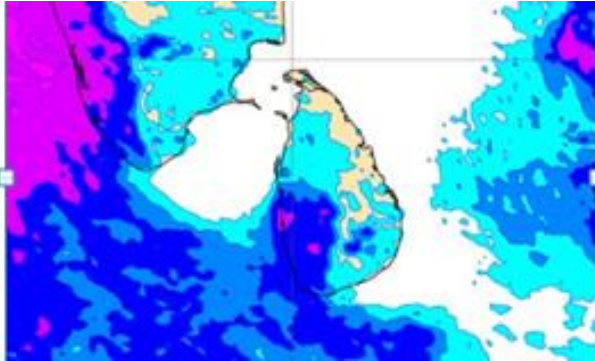
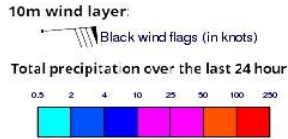


Wind Gust (m/s)

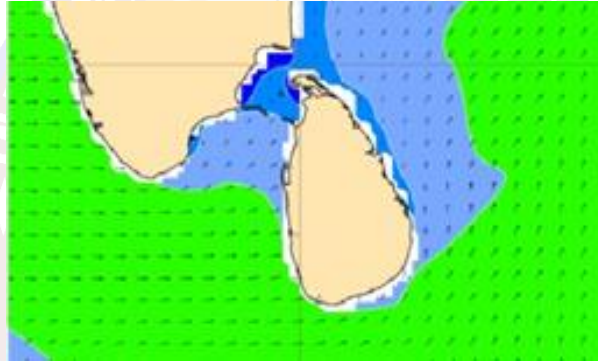
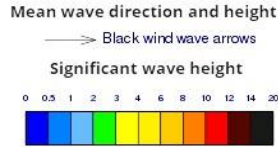


- Showers or thundershowers will occur at several places in the sea areas off the coast extending from Puttalam to Matara via Colombo and Galle.
- Wind speed will be 30-40 kmph in the sea areas around the island. The sea area extending from Puttalam to Trincomalee via Kankasanturai and in the sea areas off the coast extending from Galle to Pottuvil via Hambantota can be rough at times as the wind speed may increase up to 50-60 kmph at times.

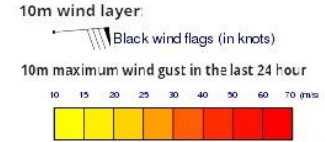
Wind and Rainfall Forecast (Total precipitation for 24 hrs)



Significant wave height (in meters)

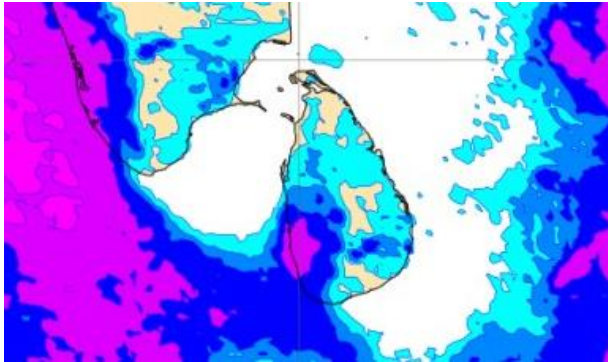
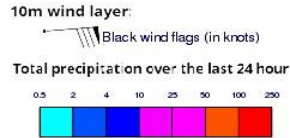


Wind Gust (m/s)

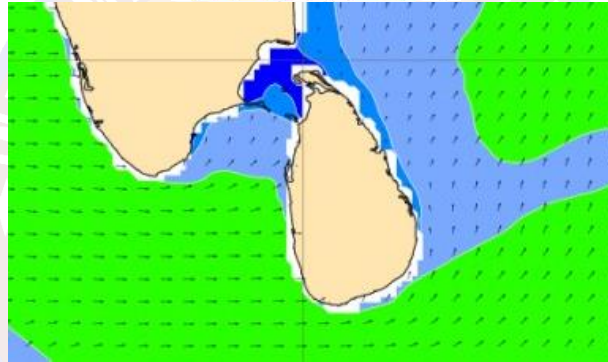
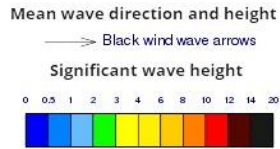


- Showers or thundershowers will occur at several places in the sea areas off the coast extending from Puttalam to Matara via Colombo and Galle.
- Wind speed will be 30-40 kmph in the sea areas around the island. The sea area extending from Puttalam to Trincomalee via Kankasanturai and in the sea areas off the coast extending from Galle to Pottuvil via Hambantota can be rough at times as the wind speed may increase up to 50-60 kmph at times.

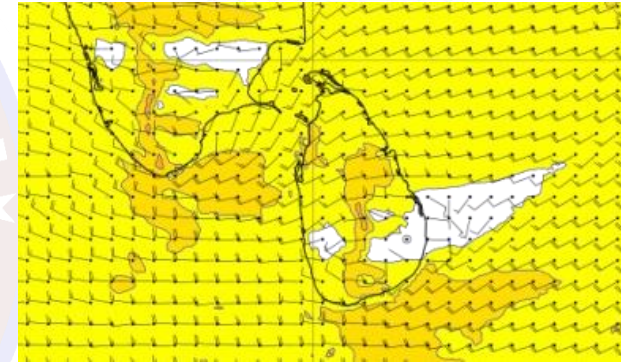
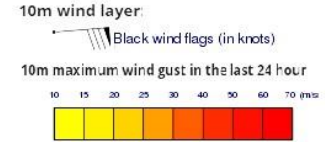
Wind and Rainfall Forecast (Total precipitation for 24 hrs)



Significant wave height (in meters)



Wind Gust (m/s)



- Showers or thundershowers will occur at several places in the sea areas off the coast extending from Puttalam to Matara via Colombo and Galle.
- Wind speed will be 30-40 kmph in the sea areas around the island. The sea area extending from Puttalam to Trincomalee via Kankasanturai and in the sea areas off the coast extending from Galle to Pottuvil via Hambantota can be rough at times as the wind speed may increase up to 50-60 kmph at times.