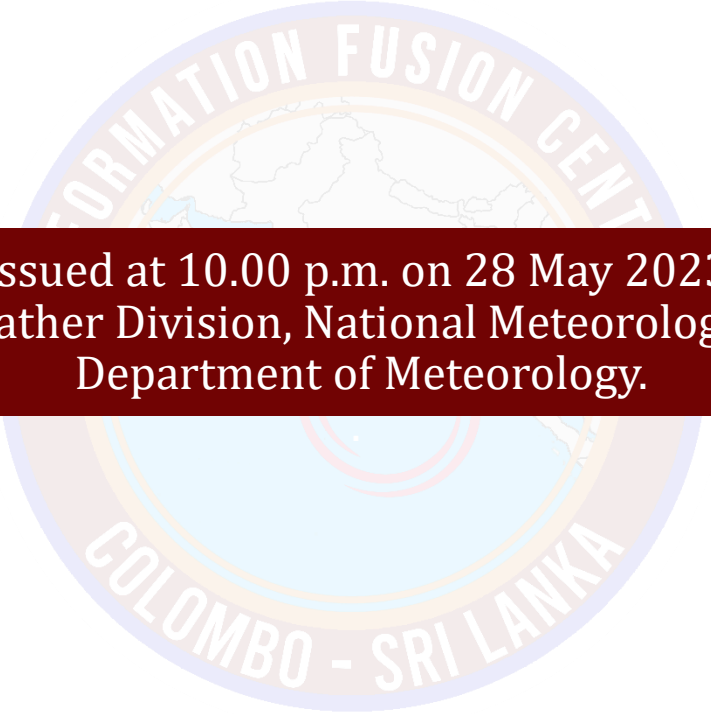




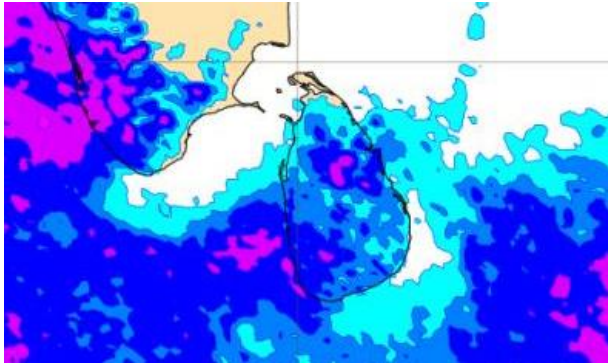
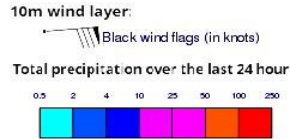
INFORMATION FUSION CENTRE COLOMBO

08 DAY FORECAST FOR COASTAL AREAS AROUND SRI LANKA

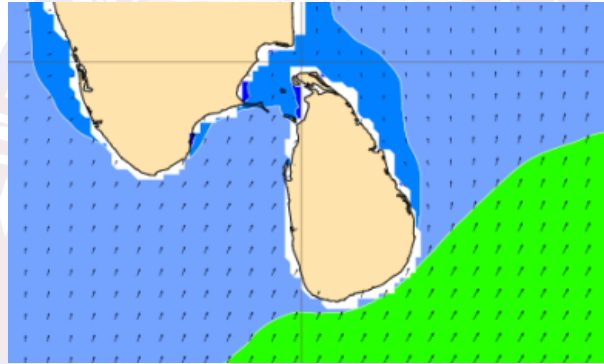
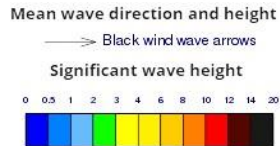


Issued at 10.00 p.m. on 28 May 2023
Marine Weather Division, National Meteorological Centre
Department of Meteorology.

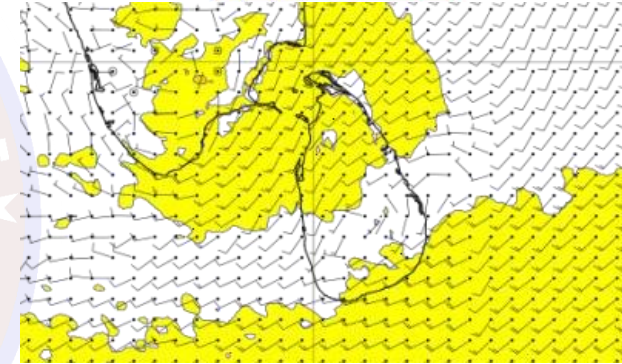
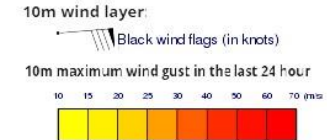
Wind and Rainfall Forecast (Total precipitation for 24 hrs)



Significant wave height (in meters)

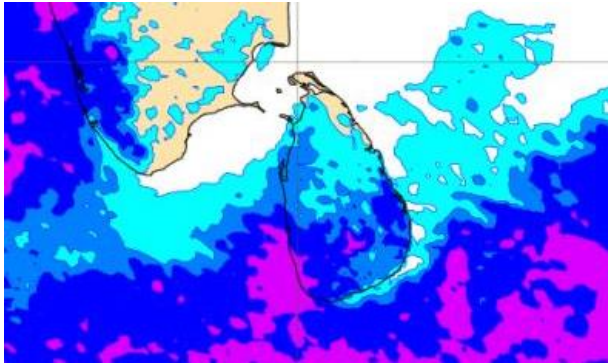
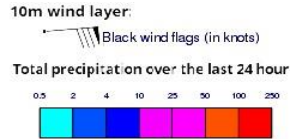


Wind Gust (m/s)

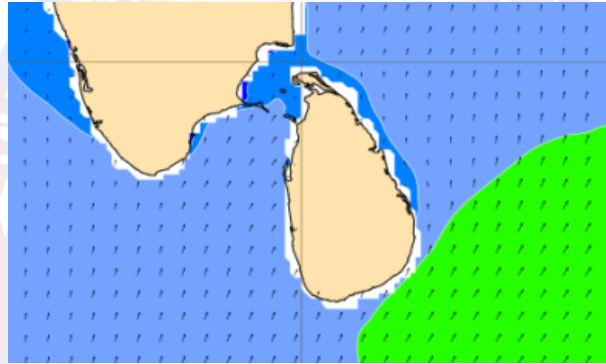
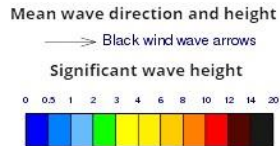


- Showers or thundershowers will occur at several places in the sea area extending from Puttalam to Matara via Colombo and Galle. Showers or thundershowers may occur at a few places in the sea area extending from Mullaitivu to Batticaloa via Trincomalee.
- Wind speed will be 20-30 kmph in the sea areas around the island. The sea area extending from Puttalam to Kankasanturai via Mannar and in the sea areas off the coast extending from Hambantota to Pottuvil can be fairly rough at times as the wind speed may increase up to 40-45 kmph at times.

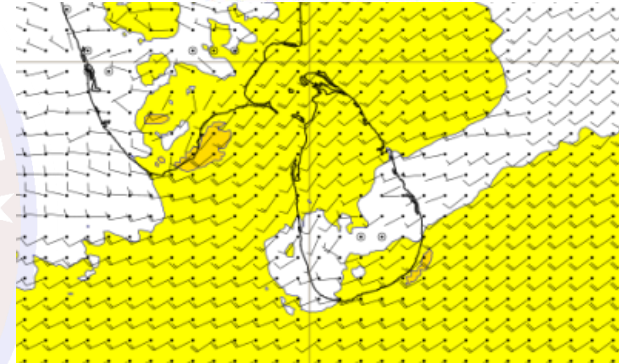
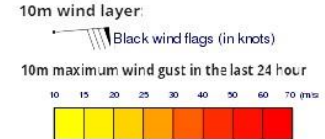
Wind and Rainfall Forecast (Total precipitation for 24 hrs)



Significant wave height (in meters)

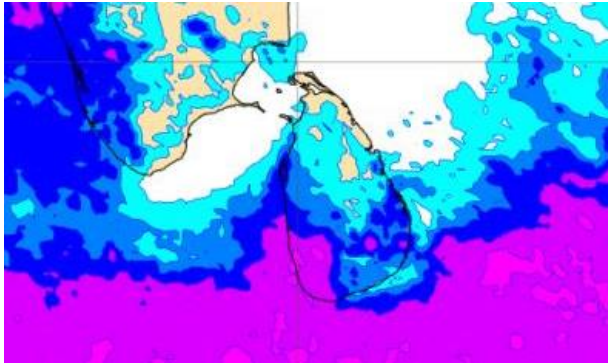
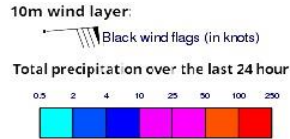


Wind Gust (m/s)

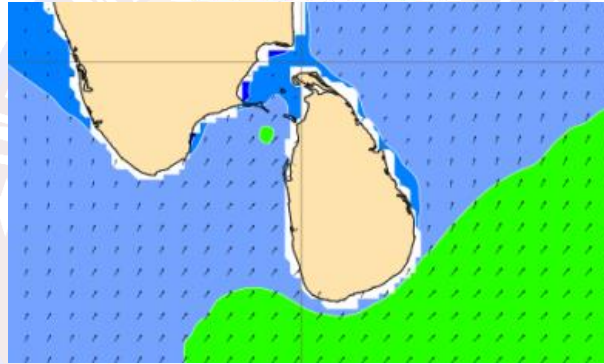
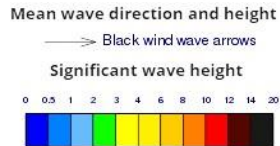


- Showers or thundershowers will occur at several places in the sea area extending from Puttalam to Matara via Colombo and Galle. Showers or thundershowers may occur at a few places in the sea area extending from Trincomalee to Pottuvil via Batticaloa.
- Wind speed will be 20-30 kmph in the sea areas around the island. The sea area extending from Puttalam to Kankasanturai via Mannar and in the sea areas off the coast extending from Hambantota to Pottuvil can be fairly rough at times as the wind speed may increase up to 40-45 kmph at times.

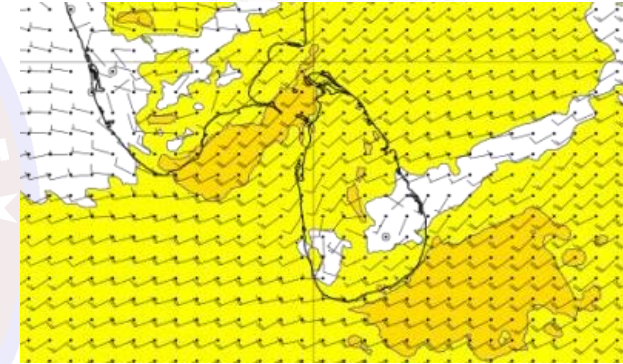
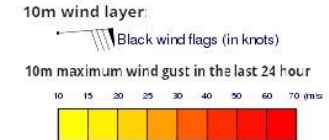
Wind and Rainfall Forecast (Total precipitation for 24 hrs)



Significant wave height (in meters)

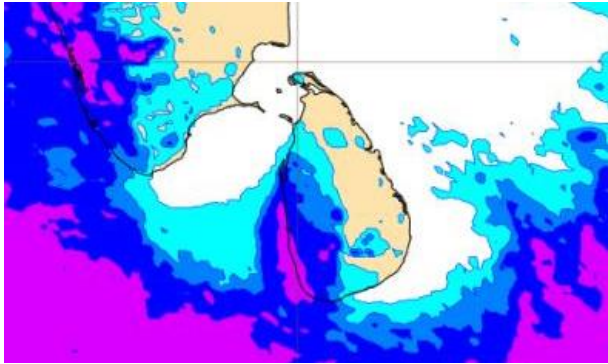
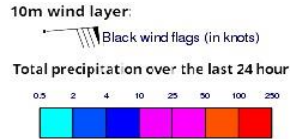


Wind Gust (m/s)

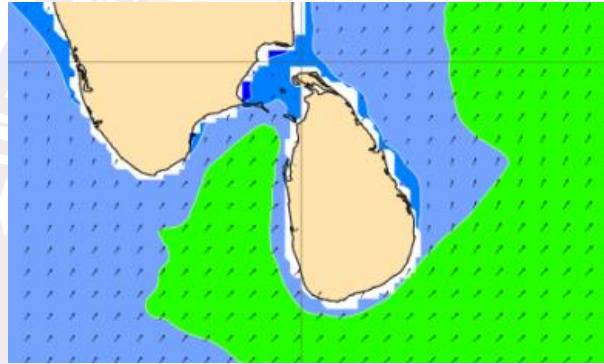
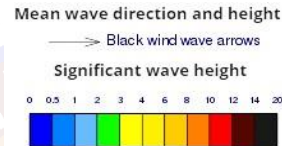


- Showers or thundershowers will occur at times in the sea area extending from Puttalam to Matara via Colombo and Galle. Showers or thundershowers may occur at a few places in the sea area extending from Batticaloa to Pottuvil.
- Wind speed will be 25-35 kmph in the sea areas around the island. The sea area extending from Puttalam to Kankasanturai via Mannar and in the sea areas off the coast extending from Hambantota to Pottuvil can be fairly rough at times as the wind speed may increase up to 40-50 kmph at times.

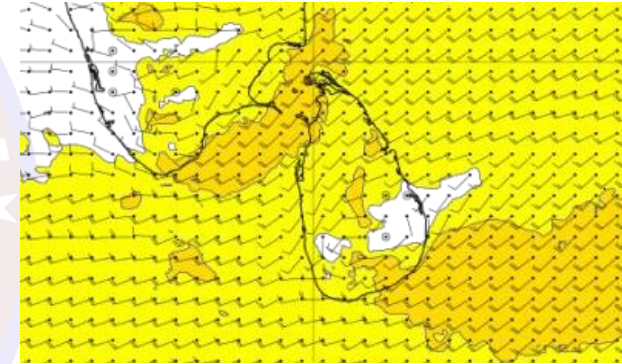
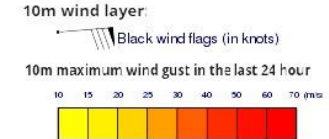
Wind and Rainfall Forecast (Total precipitation for 24 hrs)



Significant wave height (in meters)

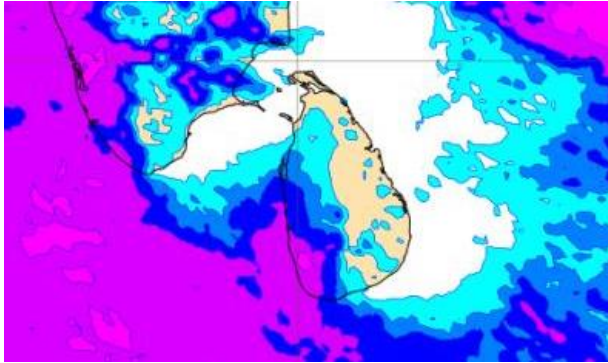
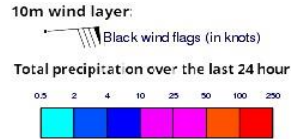


Wind Gust (m/s)

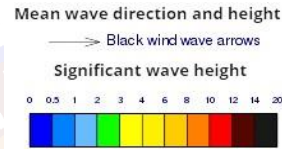


- Showers or thundershowers will occur at several places in the sea area extending from Puttalam to Matara via Colombo and Galle.
- Wind speed will be 25-35 kmph in the sea areas around the island. The sea area extending from Puttalam to Kankasanturai via Mannar and in the sea areas off the coast extending from Hambantota to Pottuvil can be fairly rough at times as the wind speed may increase up to 40-50 kmph at times.

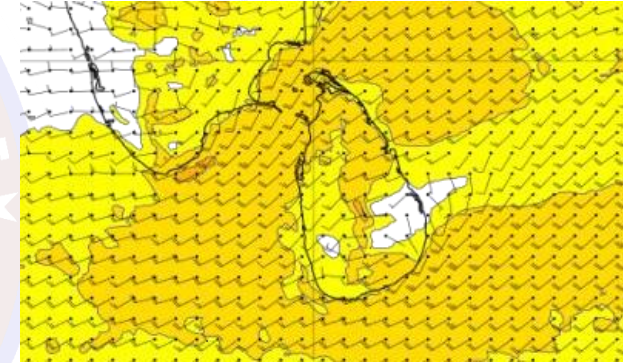
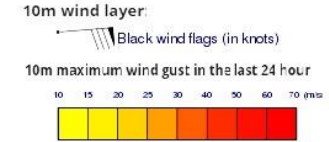
Wind and Rainfall Forecast (Total precipitation for 24 hrs)



Significant wave height (in meters)

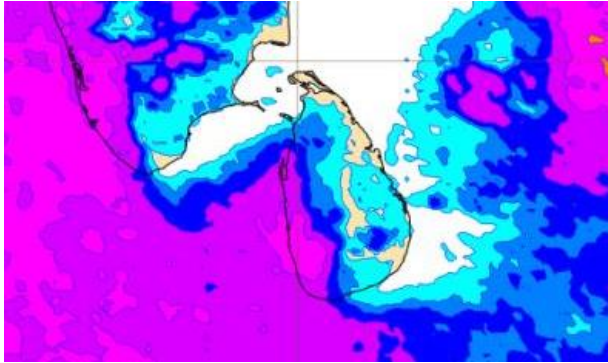
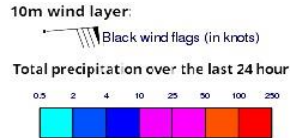


Wind Gust (m/s)

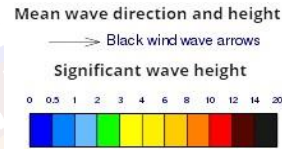


- Showers or thundershowers will occur at times in the sea area extending from Puttalam to Matara via Colombo and Galle.
- Wind speed will be 30-40 kmph in the sea areas around the island. The sea area extending from Puttalam to Trincomalee via Mannar and Kankasanturai and from Matara to Pottuvil via Hambantota can be rough at times as the wind speed may increase up to 50-55 kmph at times.

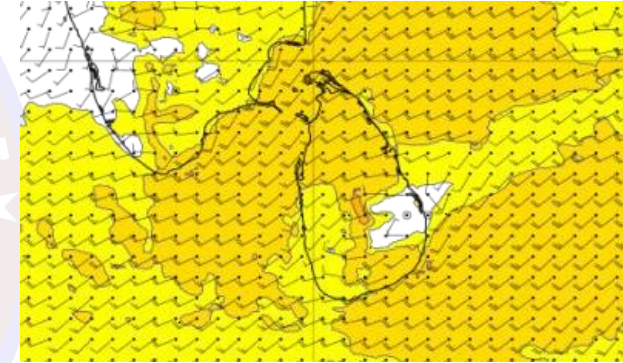
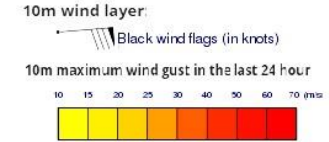
Wind and Rainfall Forecast (Total precipitation for 24 hrs)



Significant wave height (in meters)

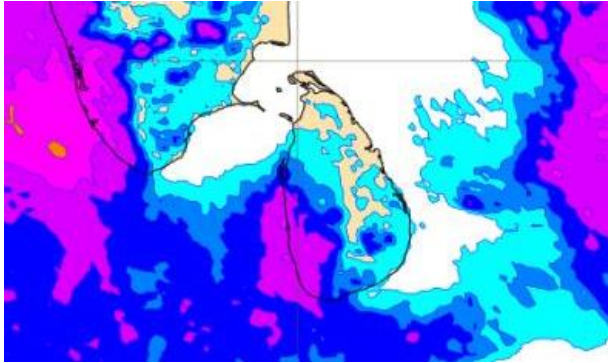
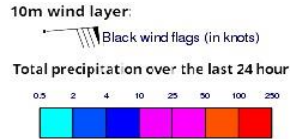


Wind Gust (m/s)

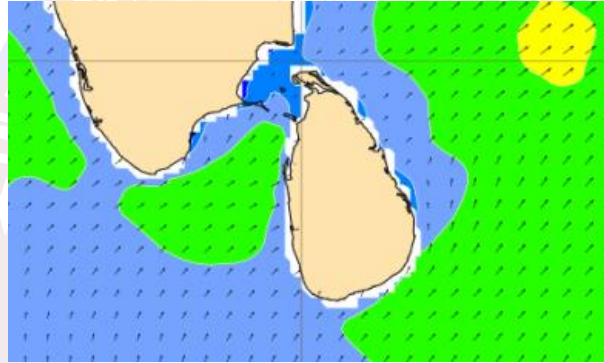
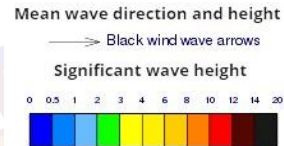


- Showers or thundershowers will occur at times in the sea area extending from Puttalam to Matara via Colombo and Galle.
- Wind speed will be 30-40 kmph in the sea areas around the island. The sea area extending from Puttalam to Trincomalee via Mannar and Kankasanturai and from Matara to Pottuvil via Hambantota can be rough at times as the wind speed may increase up to 50-55 kmph at times.

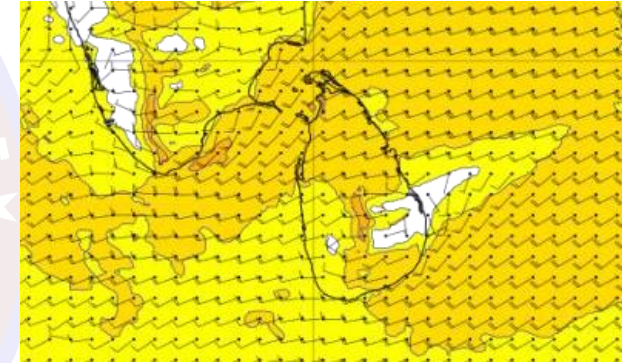
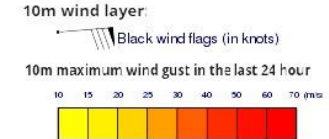
Wind and Rainfall Forecast (Total precipitation for 24 hrs)



Significant wave height (in meters)

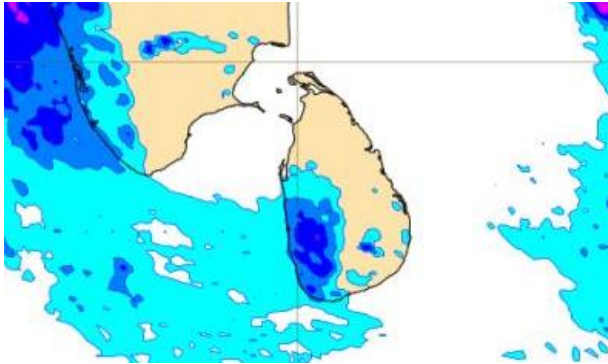
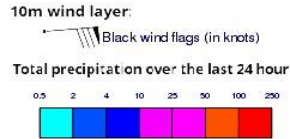


Wind Gust (m/s)

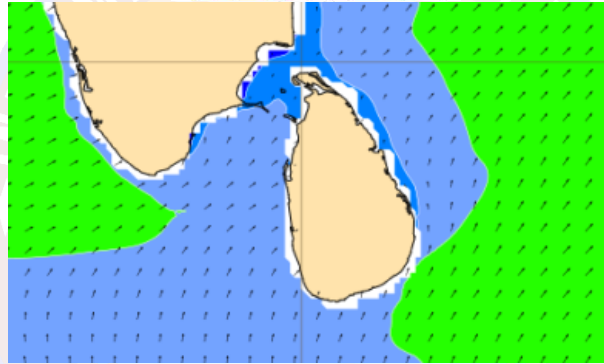
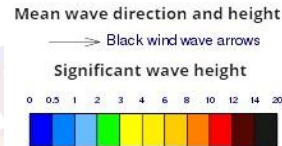


- Showers or thundershowers will occur at several places in the sea area extending from Puttalam to Matara via Colombo and Galle.
- Wind speed will be 30-40 kmph in the sea areas around the island. The sea area extending from Puttalam to Trincomalee via Mannar and Kankasanturai and from Matara to Pottuvil via Hambantota can be rough at times as the wind speed may increase up to 50-55 kmph at times.

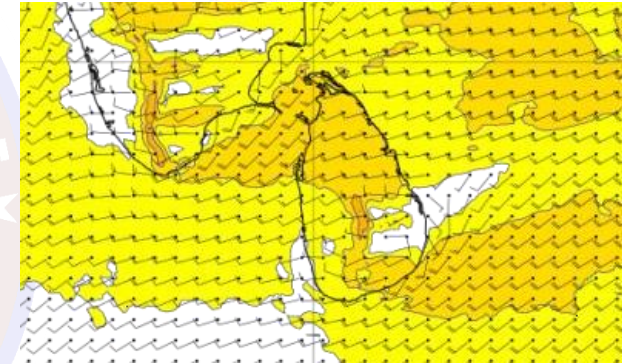
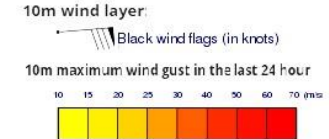
Wind and Rainfall Forecast (Total precipitation for 24 hrs)



Significant wave height (in meters)



Wind Gust (m/s)



- Showers or thundershowers will occur at a few places in the sea area extending from Mannar to Matara via Puttalam, Colombo and Galle.
- Wind speed will be 25-35 kmph in the sea areas around the island. The sea area extending from Puttalam to Kankasanturai via Mannar and in the sea areas off the coast extending from Hambantota to Pottuvil can be fairly rough at times as the wind speed may increase up to 40-50 kmph at times.