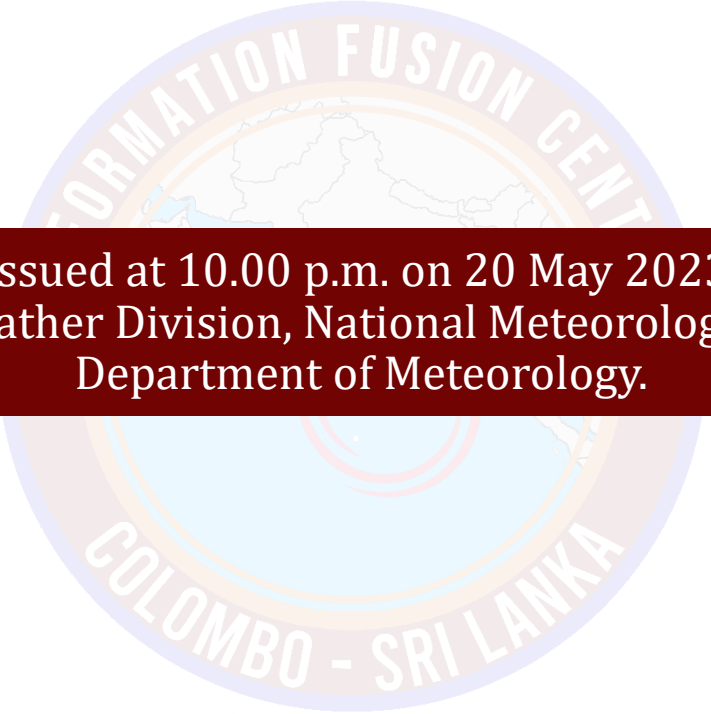


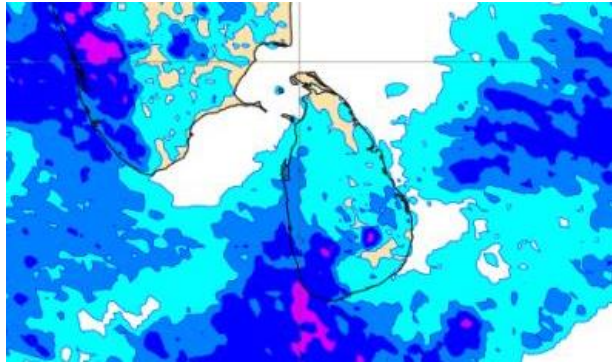
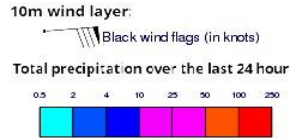
# **INFORMATION FUSION CENTRE COLOMBO**

**08 DAY FORECAST FOR COASTAL AREAS AROUND SRI LANKA**

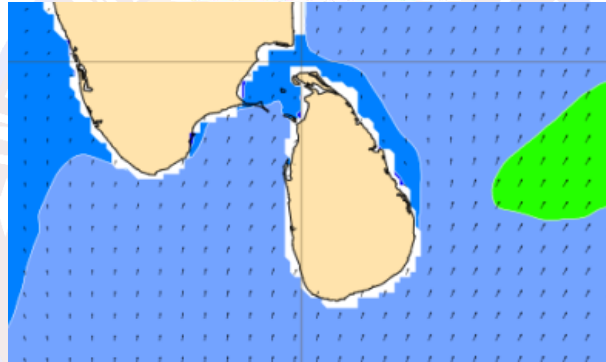
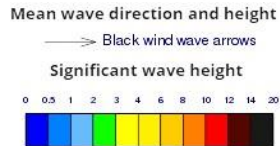


Issued at 10.00 p.m. on 20 May 2023  
Marine Weather Division, National Meteorological Centre  
Department of Meteorology.

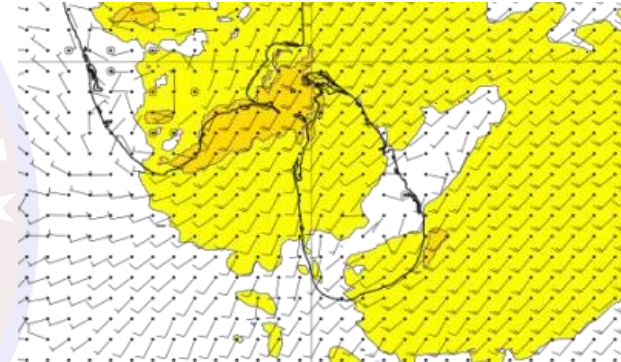
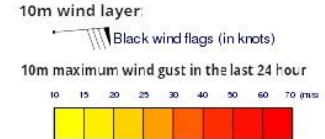
## Wind and Rainfall Forecast (Total precipitation for 24 hrs)



## Significant wave height (in meters)

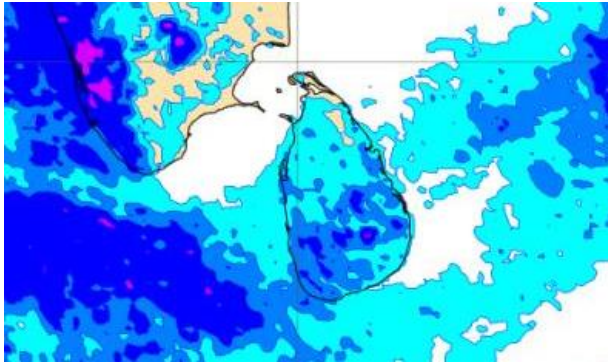
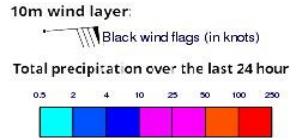


## Wind Gust (m/s)

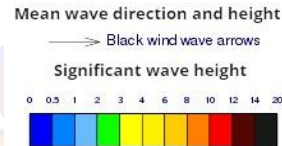


- Showers or thundershowers will occur at times in the sea areas off the coast extending from Colombo to Matara via Galle.
- Wind speed will be 20-30 kmph in the sea areas around the island. The sea area extending from Puttalam to Puttalam to Kankasanturai via Mannar and in the sea areas off the coast extending from Hambantota to Pottuvil can be fairly rough at times as the wind speed may increase up to 40-45 kmph at times.

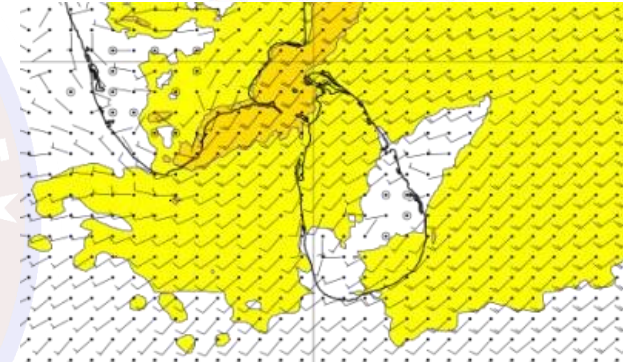
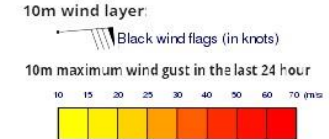
### Wind and Rainfall Forecast (Total precipitation for 24 hrs)



### Significant wave height (in meters)

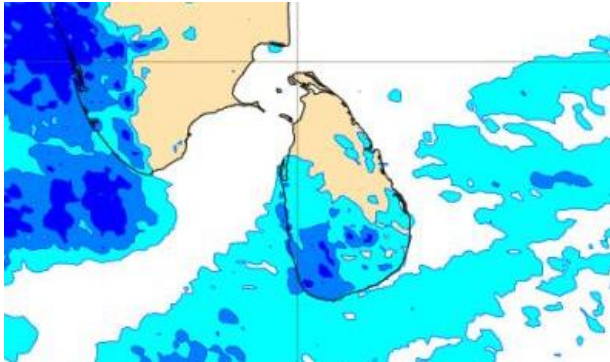
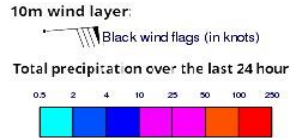


### Wind Gust (m/s)

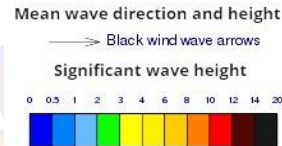


- Showers or thundershowers will occur at several places in the sea area extending from Puttalam to Matara via Colombo and Galle.
- Wind speed will be 20-30 kmph in the sea areas around the island. The sea area extending from Puttalam to Puttalam to Kankasanturai via Mannar and in the sea areas off the coast extending from Hambantota to Pottuvil can be fairly rough at times as the wind speed may increase up to 40-45 kmph at times.

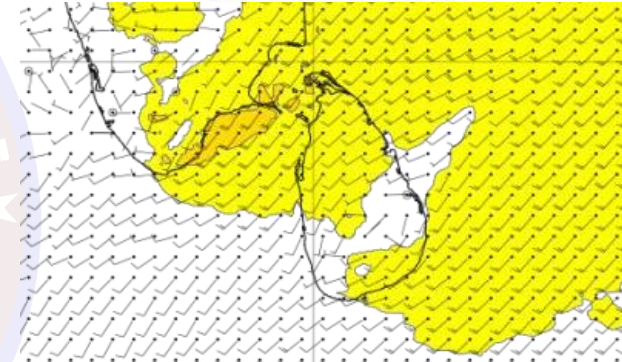
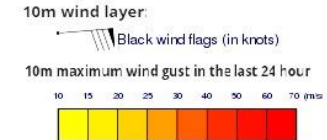
### Wind and Rainfall Forecast (Total precipitation for 24 hrs)



### Significant wave height (in meters)



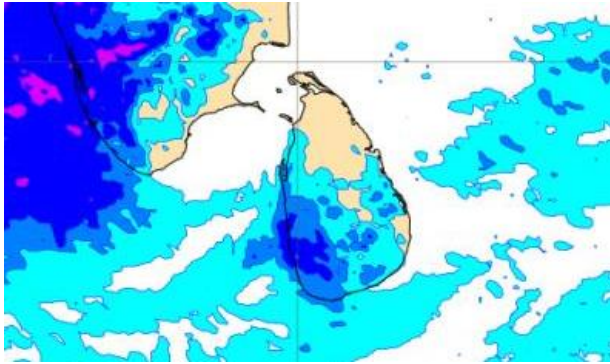
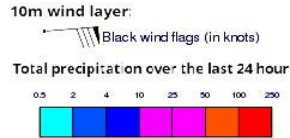
### Wind Gust (m/s)



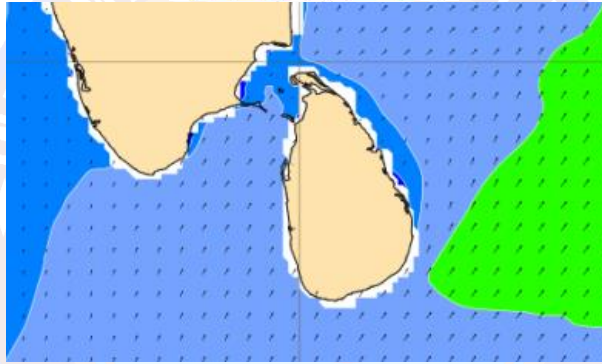
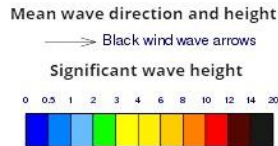
- Showers or thundershowers will occur at a few places in the sea area extending from Puttalam to Matara via Colombo and Galle.
- Wind speed will be 20-30 kmph in the sea areas around the island. The sea area extending from Puttalam to Puttalam to Kankasanturai via Mannar and in the sea areas off the coast extending from Hambantota to Pottuvil can be fairly rough at times as the wind speed may increase up to 40-45 kmph at times.



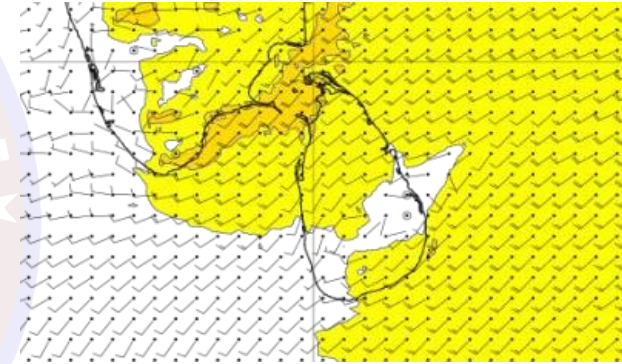
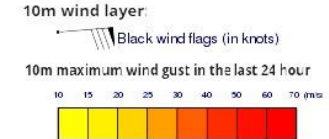
### Wind and Rainfall Forecast (Total precipitation for 24 hrs)



### Significant wave height (in meters)

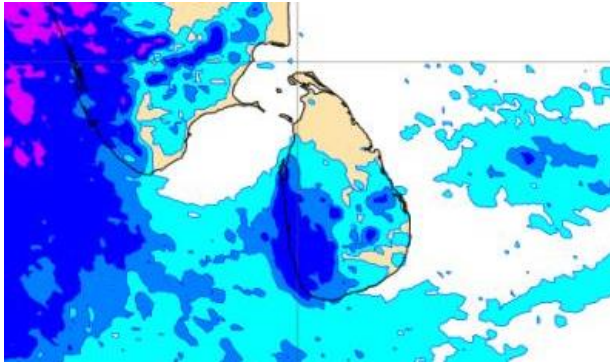


### Wind Gust (m/s)

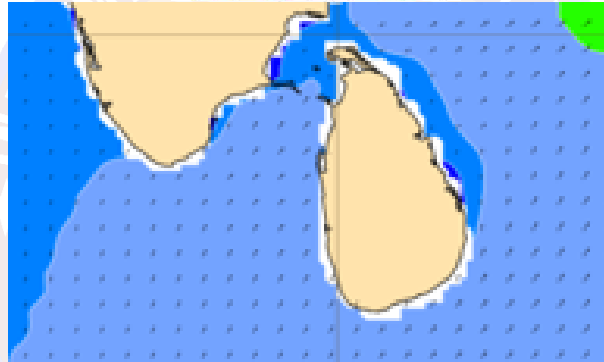
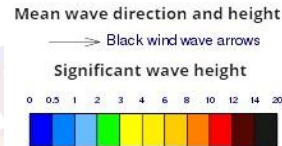


- Showers or thundershowers will occur at a few places in the sea area extending from Puttalam to Matara via Colombo and Galle.
- Wind speed will be 20-30 kmph in the sea areas around the island. The sea area extending from Puttalam to Kankasanturai via Mannar and in the sea areas off the coast extending from Hambantota to Pottuvil can be fairly rough at times as the wind speed may increase up to 40-45 kmph at times.

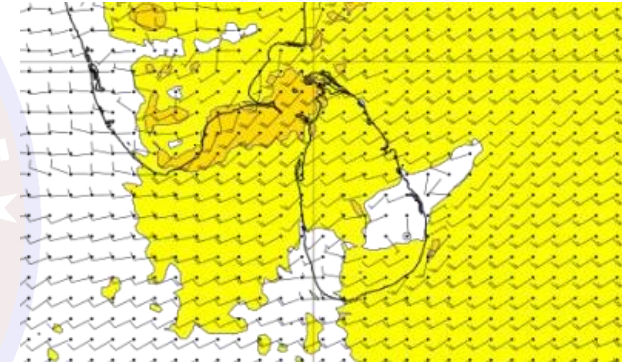
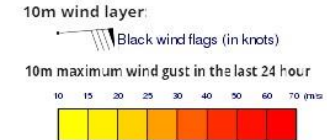
## Wind and Rainfall Forecast (Total precipitation for 24 hrs)



## Significant wave height (in meters)

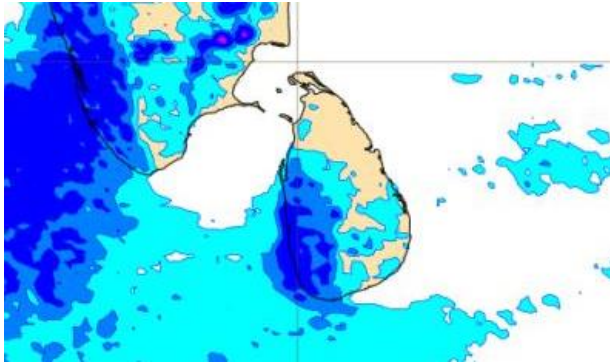
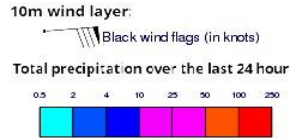


## Wind Gust (m/s)

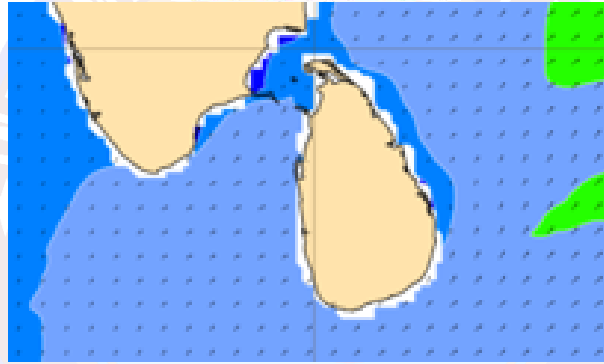
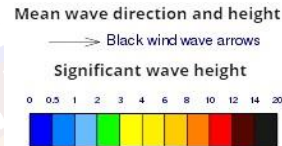


- Showers or thundershowers will occur at several places in the sea area extending from Puttalam to Matara via Colombo and Galle.
- Wind speed will be 20-30 kmph in the sea areas around the island. The sea area extending from Puttalam to Puttalam to Kankasanturai via Mannar and in the sea areas off the coast extending from Hambantota to Pottuvil can be fairly rough at times as the wind speed may increase up to 40-45 kmph at times.

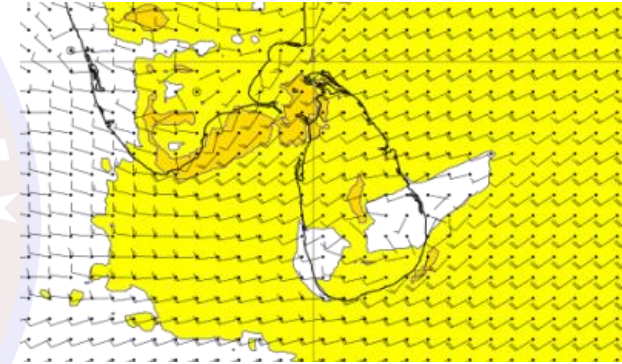
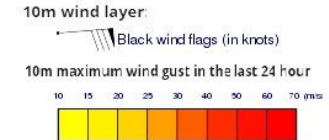
### Wind and Rainfall Forecast (Total precipitation for 24 hrs)



### Significant wave height (in meters)



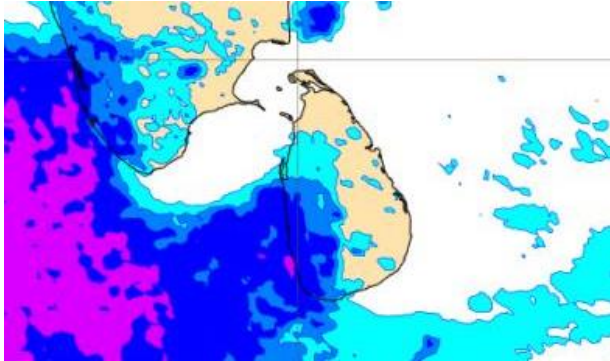
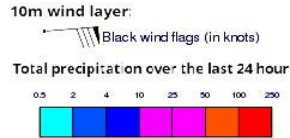
### Wind Gust (m/s)



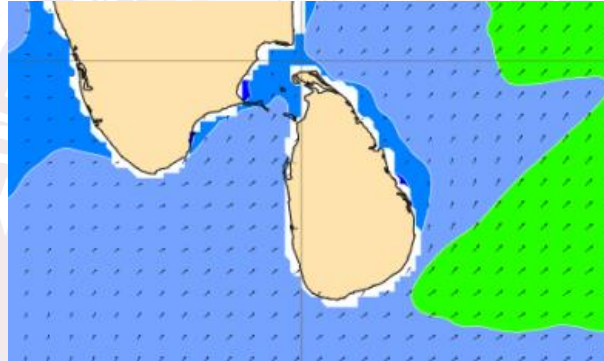
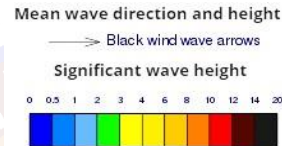
- Showers or thundershowers will occur at several places in the sea area extending from Puttalam to Matara via Colombo and Galle.
- Wind speed will be 20-30 kmph in the sea areas around the island. The sea area extending from Puttalam to Puttalam to Kankasanturai via Mannar and in the sea areas off the coast extending from Hambantota to Pottuvil can be fairly rough at times as the wind speed may increase up to 40-45 kmph at times.



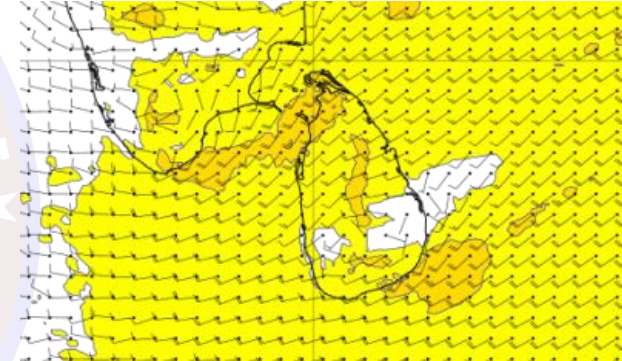
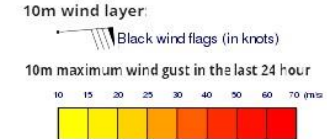
### Wind and Rainfall Forecast (Total precipitation for 24 hrs)



### Significant wave height (in meters)

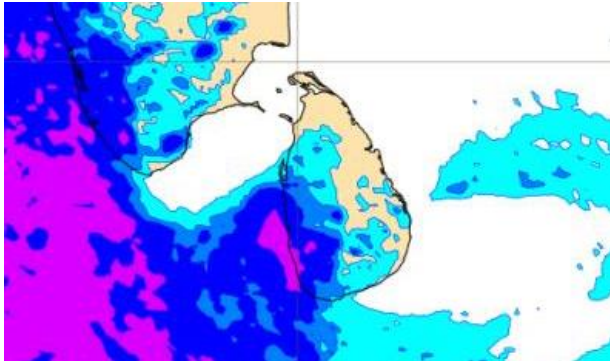
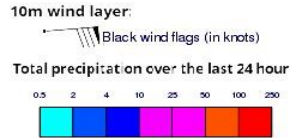


### Wind Gust (m/s)

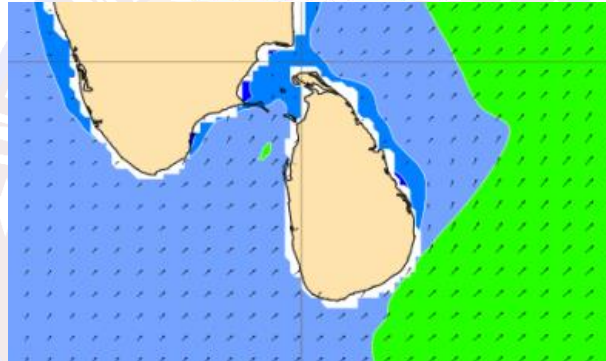
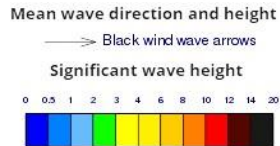


- Showers or thundershowers will occur at times in the sea area extending from Puttalam to Matara via Colombo and Galle.
- Wind speed will be 25-35 kmph in the sea areas around the island. The sea area extending from Puttalam to Puttalam to Kankasanturai via Mannar and in the sea areas off the coast extending from Hambantota to Pottuvil can be fairly rough at times as the wind speed may increase up to 45-50 kmph at times.

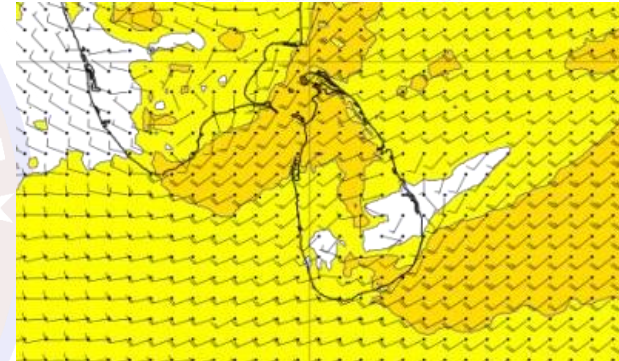
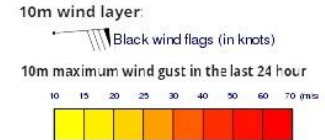
### Wind and Rainfall Forecast (Total precipitation for 24 hrs)



### Significant wave height (in meters)



### Wind Gust (m/s)



- Showers or thundershowers will occur at times in the sea area extending from Puttalam to Matara via Colombo and Galle.
- Wind speed will be 25-35 kmph in the sea areas around the island. The sea area extending from Puttalam to Kankasanturai via Mannar and in the sea areas off the coast extending from Hambantota to Pottuvil can be fairly rough at times as the wind speed may increase up to 45-50 kmph at times.