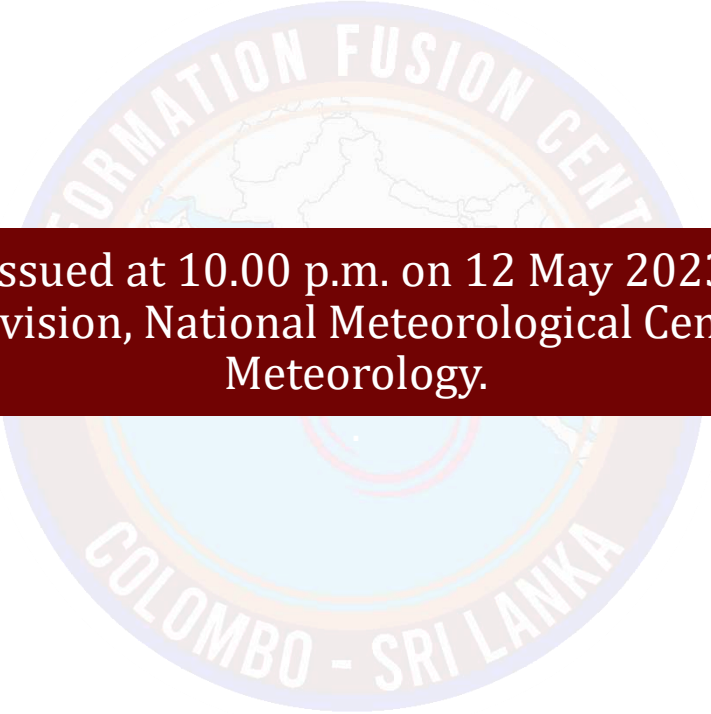


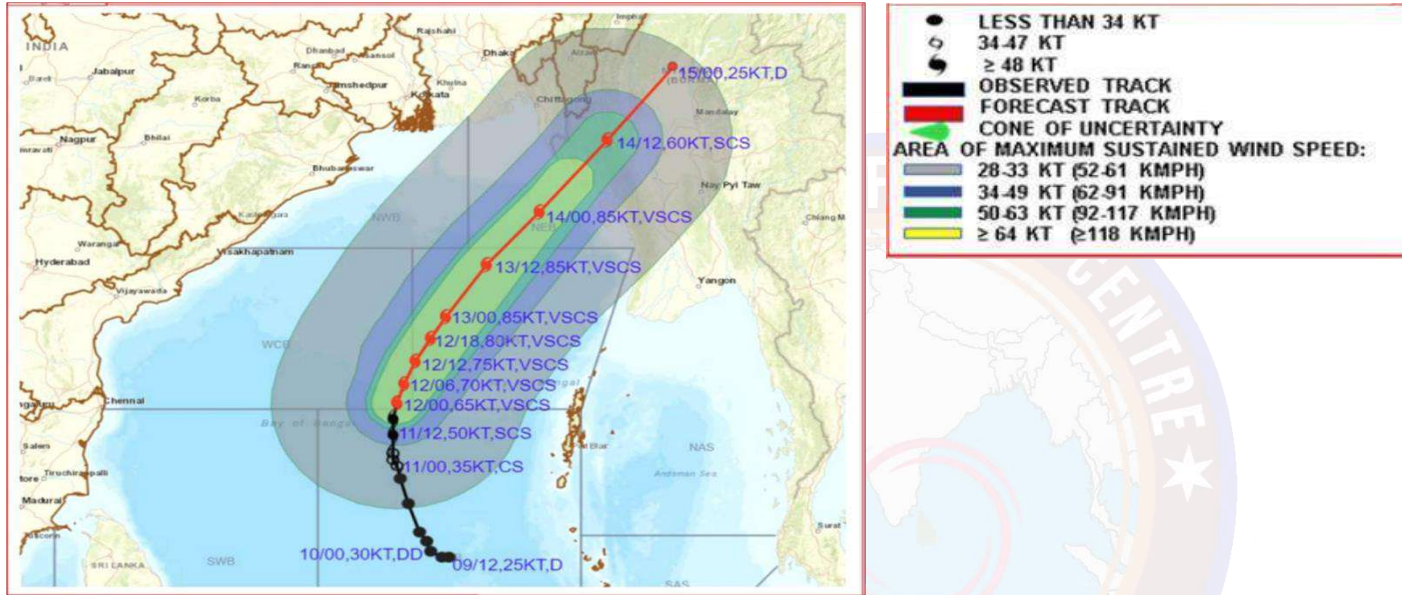


INFORMATION FUSION CENTRE COLOMBO

08 DAY FORECAST FOR COASTAL AREAS AROUND SRI LANKA



Issued at 10.00 p.m. on 12 May 2023
Marine Weather Division, National Meteorological Centre, Department of
Meteorology.

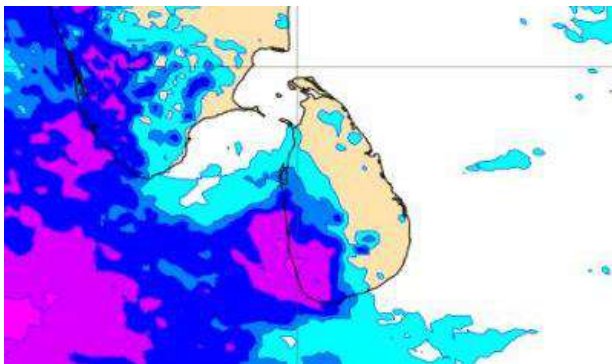


- Cyclonic storm “Mocha” over Southeast Bay of Bengal has intensified into a very severe cyclonic storm and lay centered near 13.20° N and 88.10° E at 05.30 hours today (12th May). It is very likely to move north-northeastwards with further intensification and the system is very likely to cross southeast Bangladesh and north Myanmar coasts around noon of 14th May.
- Due to this system, wind speeds will be (55-65) kmph and can increase up to (75-85) kmph in sea areas bounded by (05N - 20N) and (83E - 100E) during next 24 hours.
- Heavy showers or thundershowers; very rough, high at times seas can also be expected in above sea areas

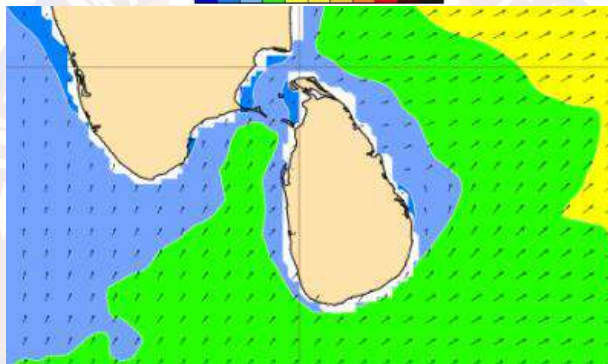
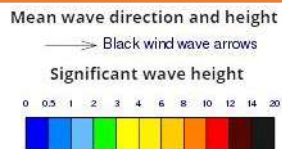
- The forecast track and intensity of the system are given in the following table

DATE/TIME	POSITION (LAT. °N/LONG. °E)	MAXIMUM SUSTAINED SURFACEWIND SPEED (KMPH)	CATEGORY OF CYCLONIC DISTURBANCE
12.05.23/1130	13.8/88.3	125-135 gusting to 150	Very Severe Cyclonic Storm
12.05.23/1730	14.5/88.6	135-145 gusting to 160	Very Severe Cyclonic Storm
12.05.23/2330	15.2/89.0	140-150 gusting to 165	Very Severe Cyclonic Storm
13.05.23/0530	15.9/89.4	145-155 gusting to 170	Very Severe Cyclonic Storm
13.05.23/1730	17.5/90.5	150-160 gusting to 175	Very Severe Cyclonic Storm
14.05.23/0530	19.1/91.9	150-160 gusting to 175	Very Severe Cyclonic Storm
14.05.23/1730	21.3/93.7	100-110 gusting to 120	Severe Cyclonic Storm

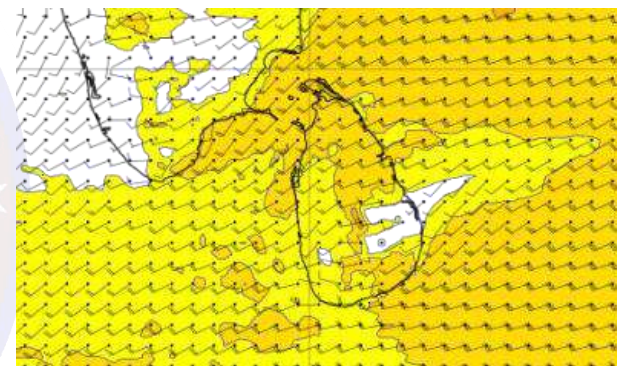
Wind and Rainfall Forecast (Total precipitation for 24 hrs)



Significant wave height (in meters)

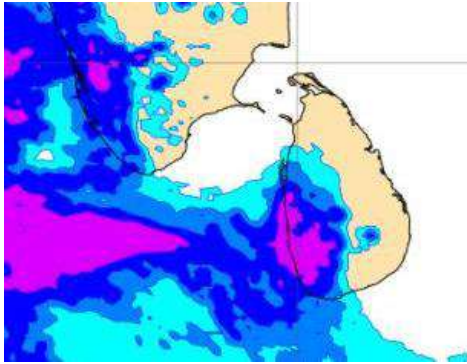
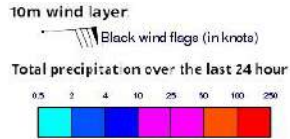


Wind Gust (m/s)

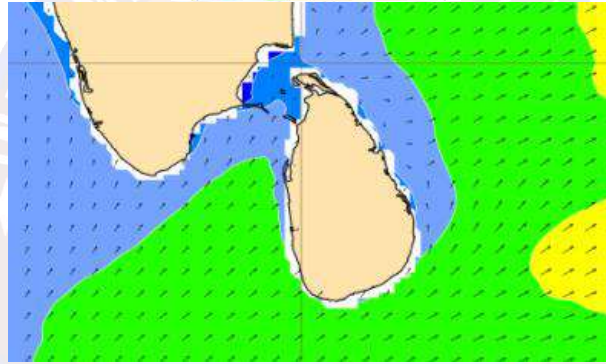
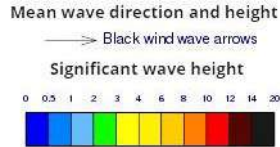


- Showers or thundershowers will occur at times in the sea area around the island.
- Wind speed will be 30-40 kmph in the sea areas around the island. The sea area extending from Trincomalee to Puttalam via Kankasanturai and Mannar and from Galle to Pottuvil Via Hambantota can be rough at times as the wind speed may increase up to 50-60 kmph at times.

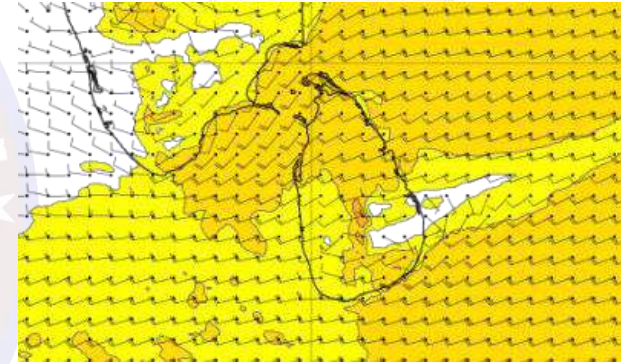
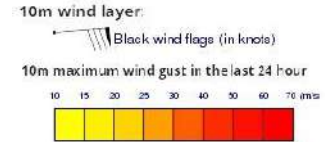
Wind and Rainfall Forecast (Total precipitation for 24 hrs)



Significant wave height (in meters)

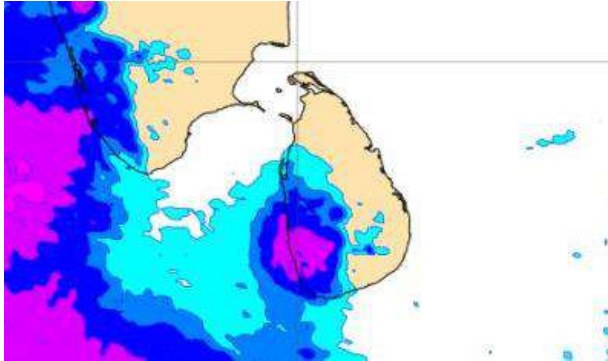
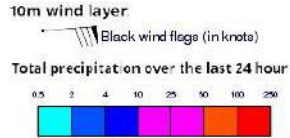


Wind Gust (m/s)

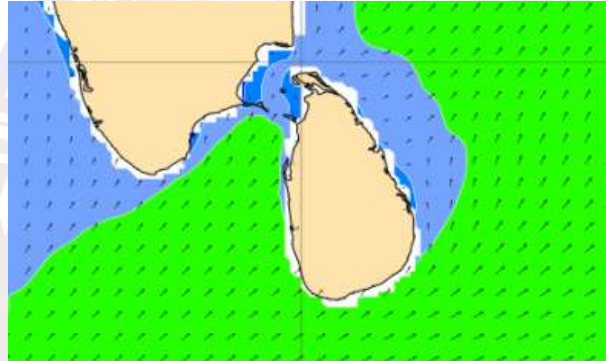
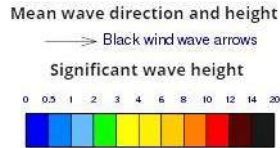


- Showers or thundershowers will occur at times in the sea area extending from Puttalam to Matara via Colombo and Galle.
- Wind speed will be 30-40 kmph in the sea areas around the island. The sea area extending from Trincomalee to Puttalam via Kankasanturai and Mannar and from Galle to Pottuvil Via Hambantota can be rough at times as the wind speed may increase up to 50-60 kmph at times.

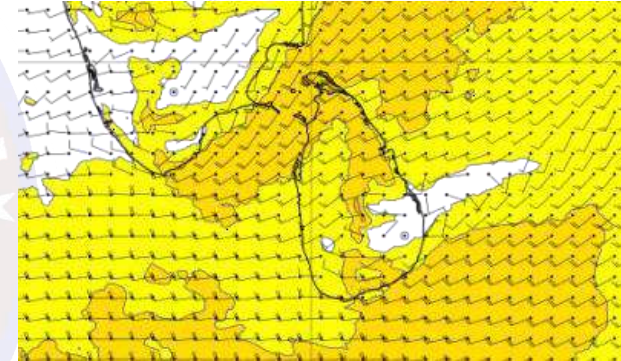
Wind and Rainfall Forecast (Total precipitation for 24 hrs)



Significant wave height (in meters)

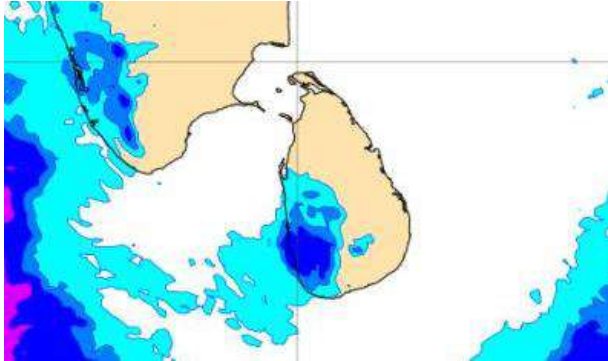
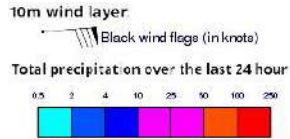


Wind Gust (m/s)

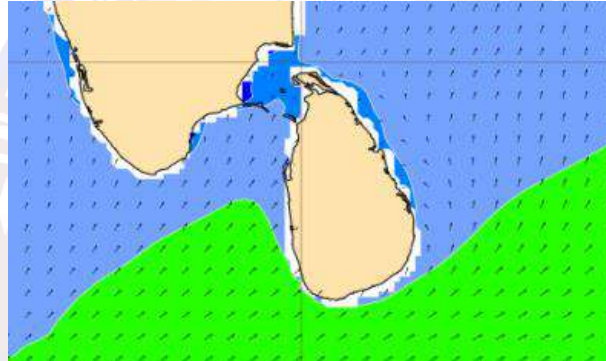
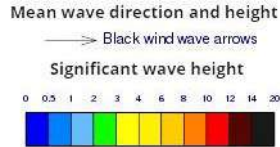


- Showers or thundershowers will occur at times in the sea area extending from Puttalam to Matara via Colombo and Galle.
- Wind speed will be 30-40 kmph in the sea areas around the island. The sea area extending from Trincomalee to Puttalam via Kankasanturai and Mannar and from Galle to Pottuvil Via Hambantota can be rough at times as the wind speed may increase up to 50 kmph at times.

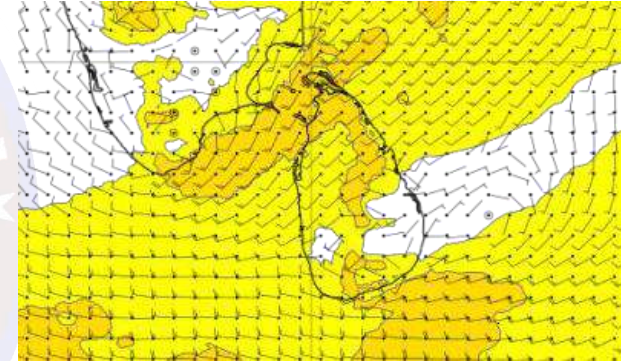
Wind and Rainfall Forecast (Total precipitation for 24 hrs)



Significant wave height (in meters)

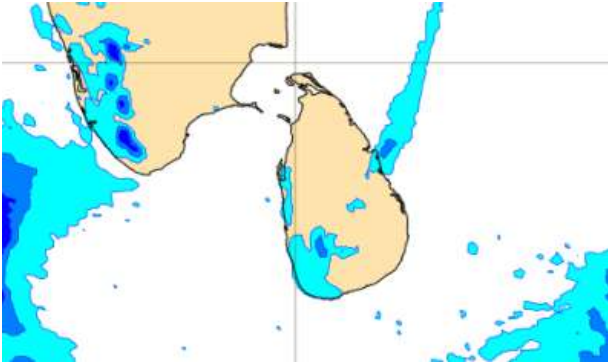
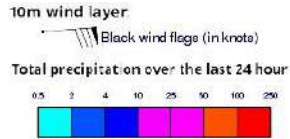


Wind Gust (m/s)

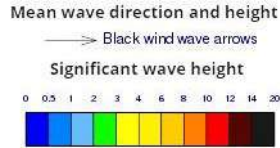


- Showers or thundershowers will occur at several places in the sea area extending from Puttalam to Matara via Colombo and Galle.
- Wind speed will be 30-40 kmph in the sea areas around the island. The sea area extending from Mullaitivu to Puttalam via Kankasanturai and Mannar and from Galle to Pottuvil Via Hambantota can be rough at times as the wind speed may increase up to 50 kmph at times.

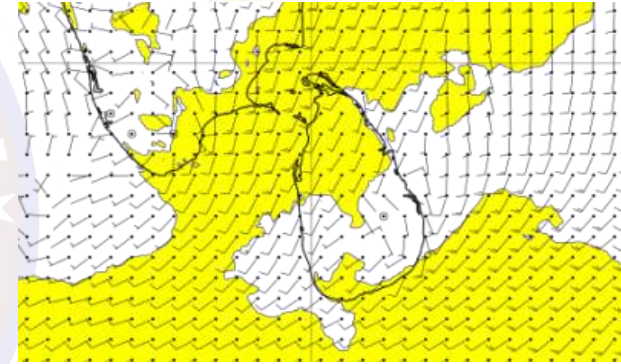
Wind and Rainfall Forecast (Total precipitation for 24 hrs)



Significant wave height (in meters)

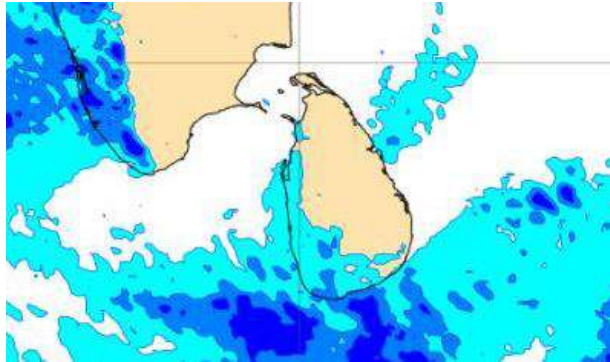


Wind Gust (m/s)

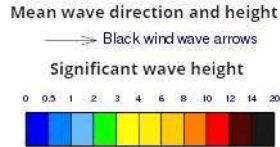


- Showers or thundershowers will occur at a few places in the sea area extending from Puttalam to Galle via Colombo.
- Wind speed will be 25-35 kmph in the sea areas around the island. The sea area extending from Kankasanturai to Puttalam via Mannar and from Galle to Pottuvil Via Hambantota can be fairly rough at times as the wind speed may increase up to 40 kmph at times.

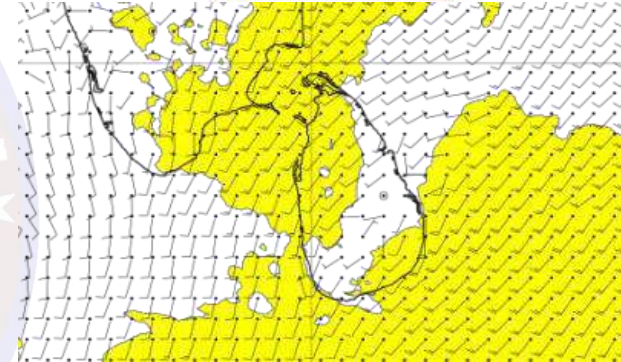
Wind and Rainfall Forecast (Total precipitation for 24 hrs)



Significant wave height (in meters)

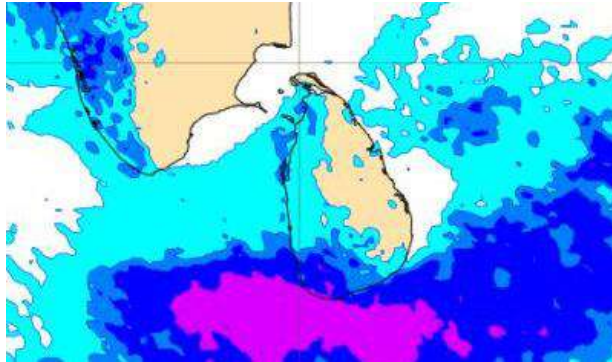


Wind Gust (m/s)

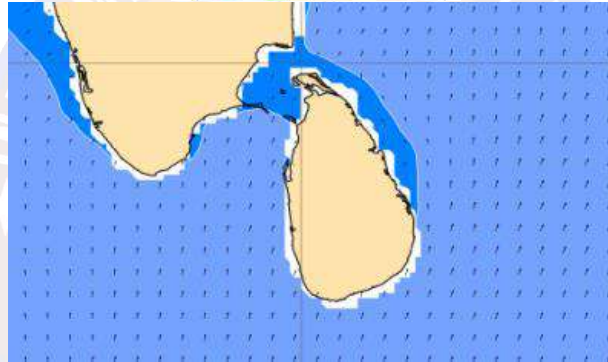
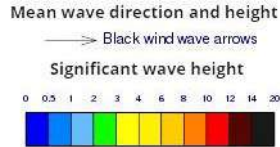


- Showers or thundershowers will occur at several places in the sea area extending from Puttalam to Matara via Colombo and Galle.
- Wind speed will be 25-35 kmph in the sea areas around the island. The sea area extending from Kankasanturai to Puttalam via Mannar and from Galle to Pottuvil Via Hambantota can be fairly rough at times as the wind speed may increase up to 40 kmph at times.

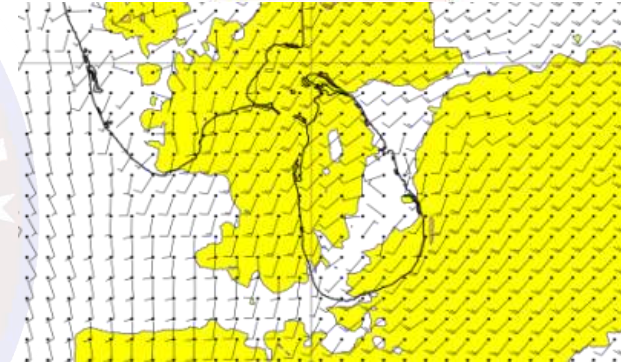
Wind and Rainfall Forecast (Total precipitation for 24 hrs)



Significant wave height (in meters)

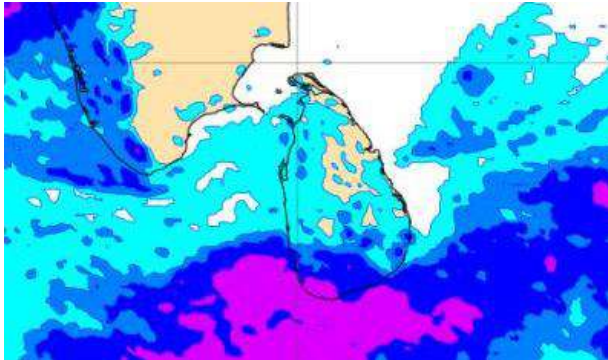
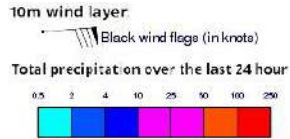


Wind Gust (m/s)

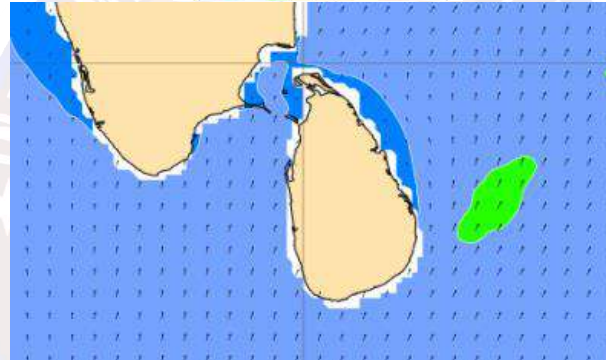
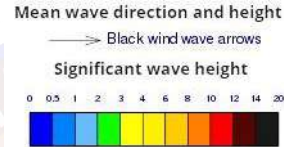


- Showers or thundershowers will occur at several places in the sea area extending from Puttalam to Matara via Colombo and Galle.
- Wind speed will be 25-35 kmph in the sea areas around the island. The sea area extending from Kankasanturai to Colombo via Mannar and Puttalam and from Galle to Pottuvil Via Hambantota can be fairly rough at times as the wind speed may increase up to 40 kmph at times.

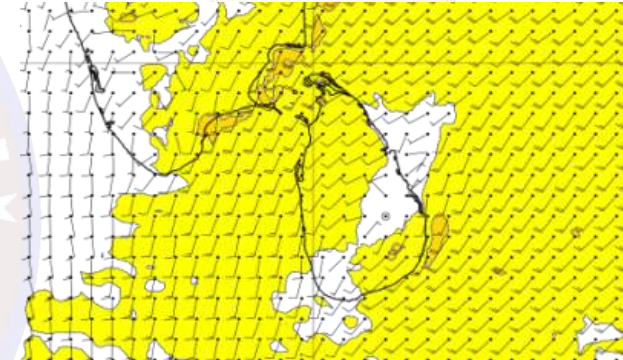
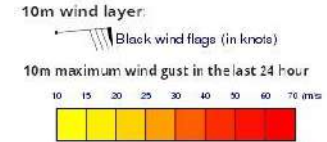
Wind and Rainfall Forecast (Total precipitation for 24 hrs)



Significant wave height (in meters)



Wind Gust (m/s)



- Showers or thundershowers will occur at several places in the sea area extending from Puttalam to Matara via Colombo and Galle.
- Wind speed will be 25-35 kmph in the sea areas around the island. The sea area extending from Kankasanturai to Colombo via Mannar and Puttalam and from Galle to Pottuvil Via Hambantota can be fairly rough at times as the wind speed may increase up to 40 kmph at times.