

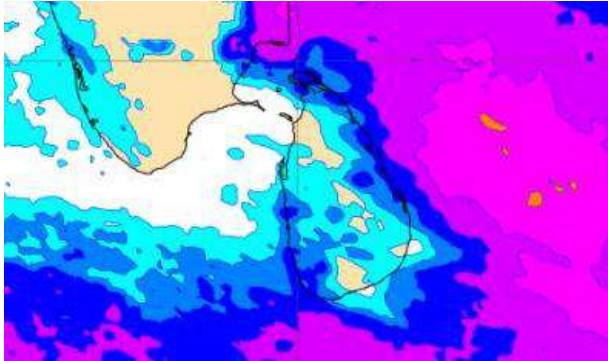
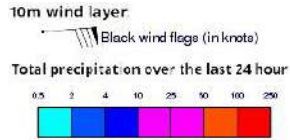
INFORMATION FUSION CENTRE COLOMBO

08 DAY FORECAST FOR COASTAL AREAS AROUND SRI LANKA

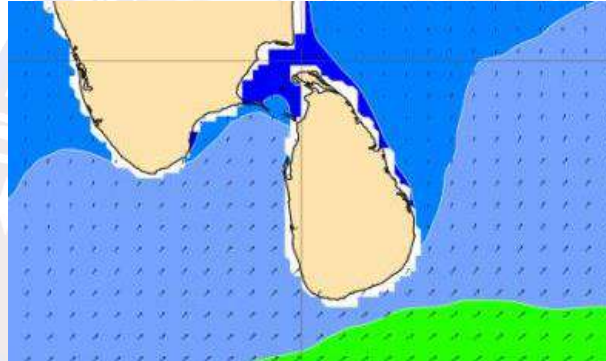
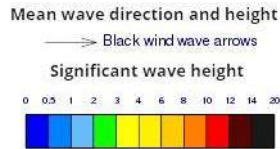
Issued at 10.00 p.m. on 04 May 2023
Marine Weather Division, National Meteorological Centre, Department of
Meteorology.



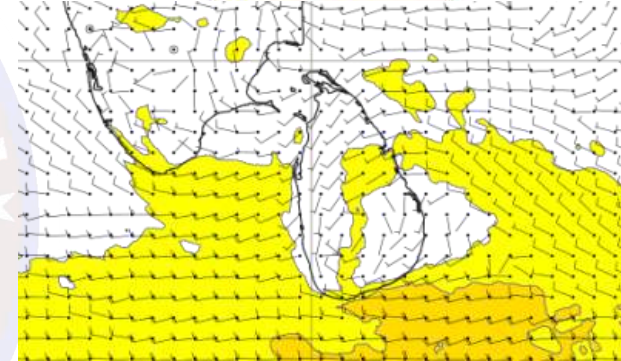
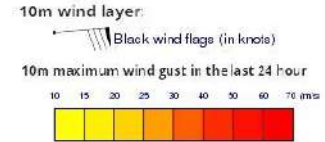
Wind and Rainfall Forecast (Total precipitation for 24 hrs)



Significant wave height (in meters)



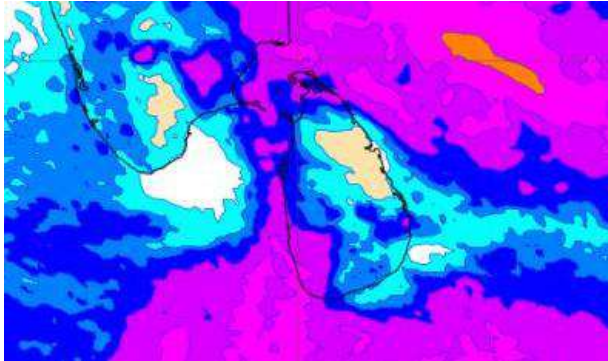
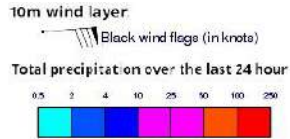
Wind Gust (m/s)



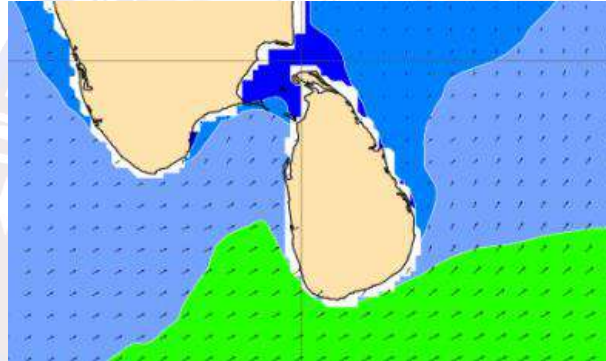
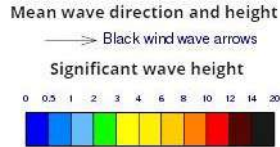
A low-level disturbance is likely to develop over the South east Bay of Bengal from 06th May onwards. Showers or Thundershowers will occur at several places in the sea areas around the island.

Wind speed will be 25-35 kmph in the sea areas around the island. The sea area extending from Beruwala to Hambantota via Galle and Matara can be fairly rough as winds can be increase up to 40-50 kmph.

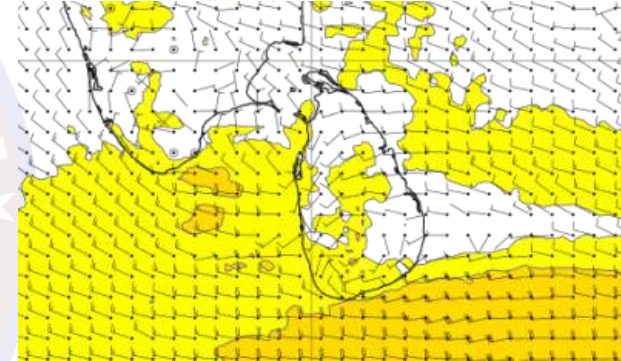
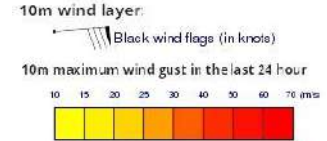
Wind and Rainfall Forecast (Total precipitation for 24 hrs)



Significant wave height (in meters)



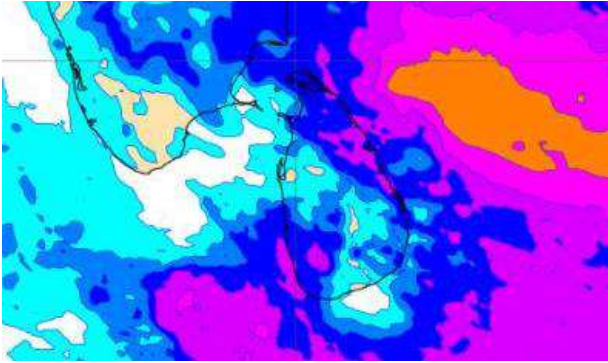
Wind Gust (m/s)



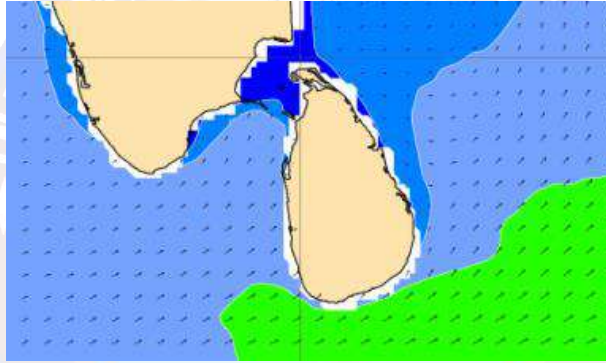
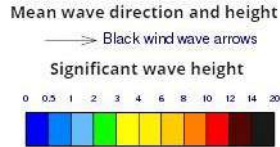
Showers or thundershowers will occur at times in the sea area extending from Puttalam to Galle via Colombo.

Wind speed will be 25-35 kmph in the sea areas around the island. The sea area extending from Galle to Hambantota via Matara can be rough as winds can be increase up to 50-60 kmph.

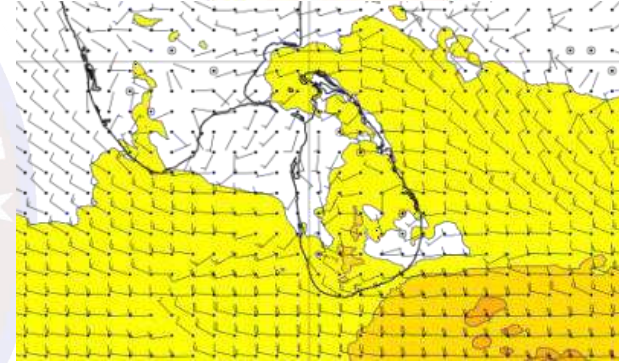
Wind and Rainfall Forecast (Total precipitation for 24 hrs)



Significant wave height (in meters)



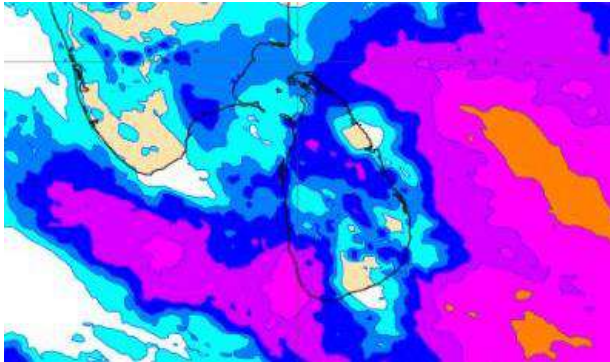
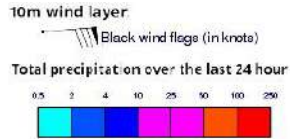
Wind Gust (m/s)



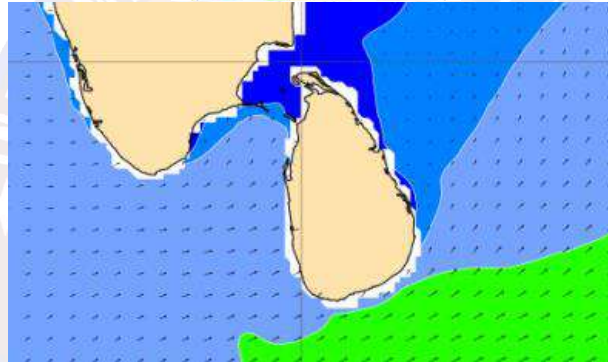
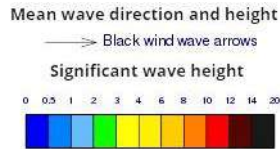
Showers or Thundershowers will occur at several places in the sea areas around the island.

Wind speed will be 25-35 kmph in the sea areas around the island. The sea area extending from Galle to Hambantota via Matara can be rough as winds can be increase up to 50-60 kmph.

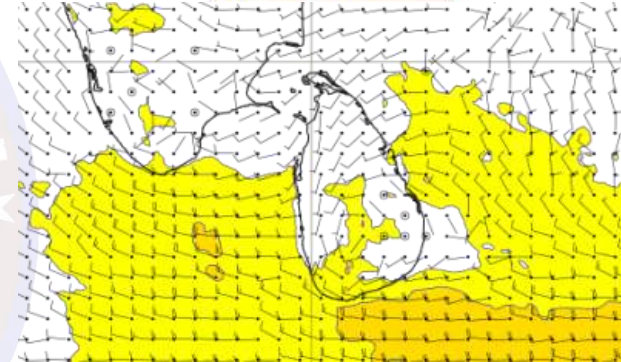
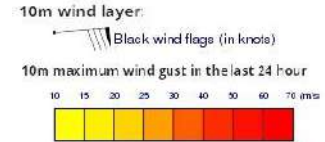
Wind and Rainfall Forecast (Total precipitation for 24 hrs)



Significant wave height (in meters)



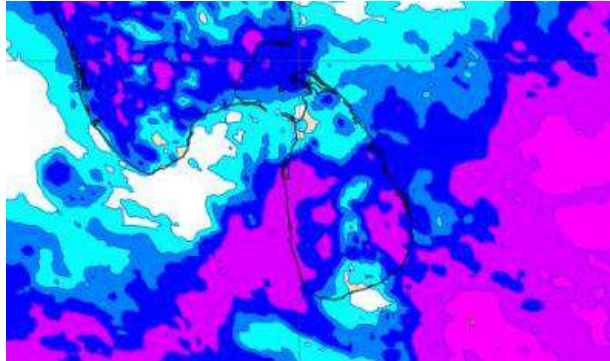
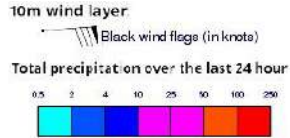
Wind Gust (m/s)



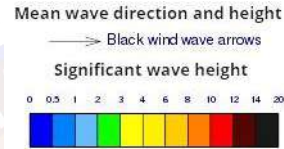
Showers or thundershowers will occur at times in the sea area extending from Puttalam to Galle via Colombo.

Wind speed will be 25-35 kmph in the sea areas around the island. The sea area extending from Galle to Hambantota via Matara can be rough as winds can be increase up to 50-60 kmph.

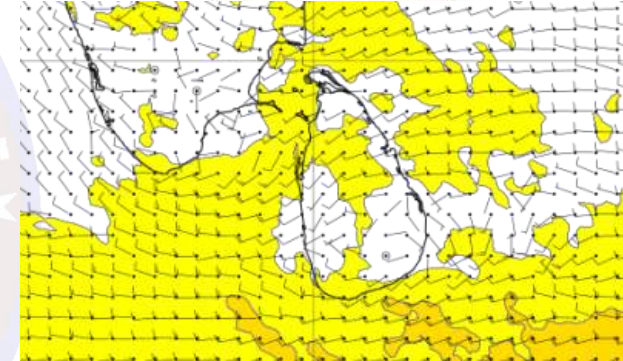
Wind and Rainfall Forecast (Total precipitation for 24 hrs)



Significant wave height (in meters)



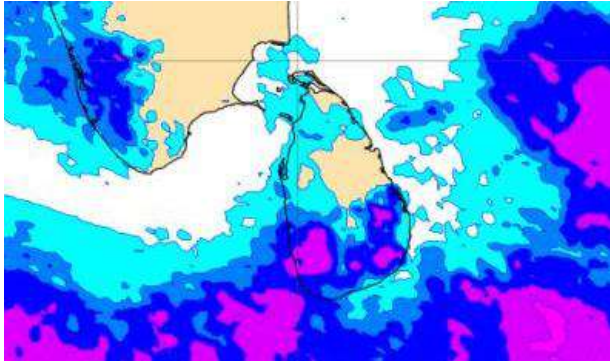
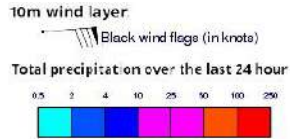
Wind Gust (m/s)



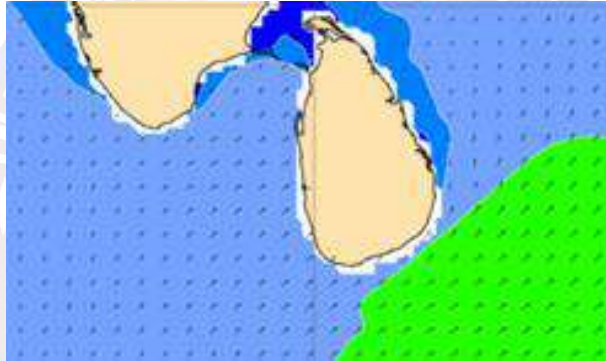
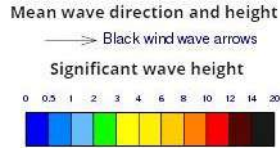
Showers or thundershowers will occur at times in the sea area extending from Puttalam to Galle via Colombo. Thundershowers may occur at several places in the other sea areas particularly during the evening or night.

Wind speed will be 25-35 kmph in the sea areas around the island. The sea area extending from Galle to Hambantota via Matara can be fairly rough as winds can be increase up to 40-50 kmph.

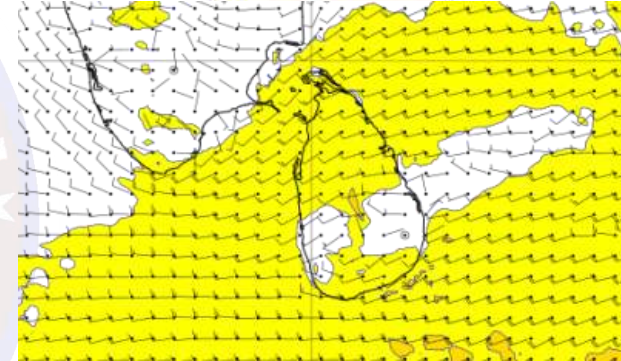
Wind and Rainfall Forecast (Total precipitation for 24 hrs)



Significant wave height (in meters)



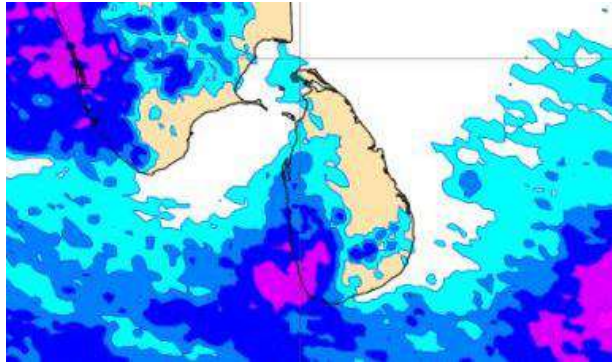
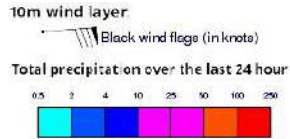
Wind Gust (m/s)



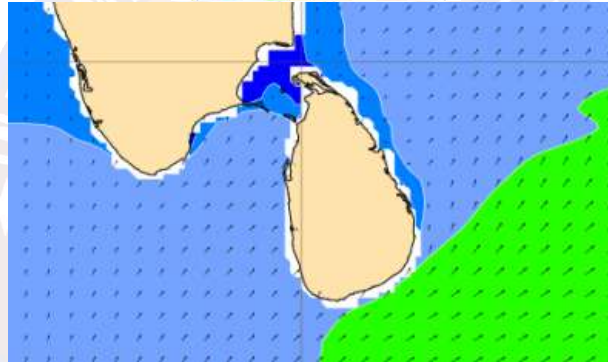
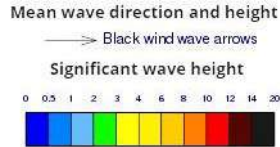
Showers or Thundershowers will occur at several places in the sea areas around the island.

Wind speed will be 25-35 kmph in the sea areas around the island. The sea area extending from Galle to Hambantota via Matara can be fairly rough as winds can be increase up to 40-50 kmph.

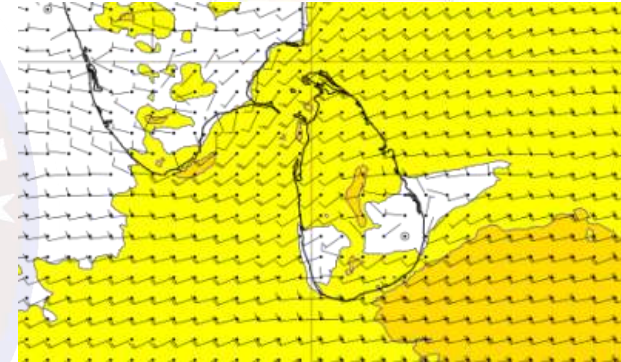
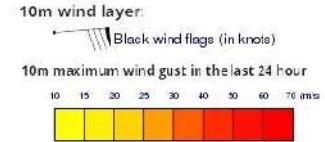
Wind and Rainfall Forecast (Total precipitation for 24 hrs)



Significant wave height (in meters)



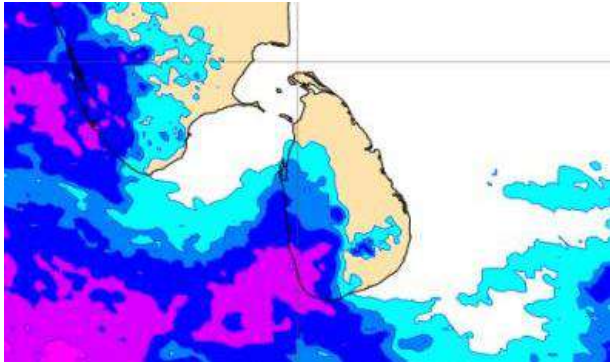
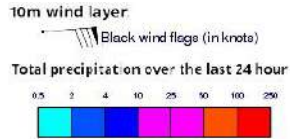
Wind Gust (m/s)



Showers or thundershowers will occur at several places in the sea area extending from Puttalam to Galle via Colombo.

Wind speed will be 30-40 kmph in the sea areas around the island. The sea area extending from Galle to Pottuvil Via Hambantota can be rough at times as the wind speed may increase up to 50- 60 kmph at times.

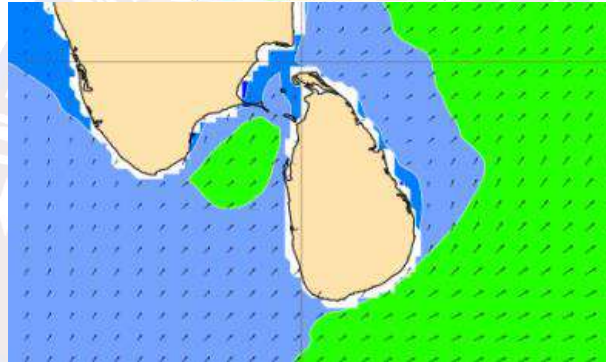
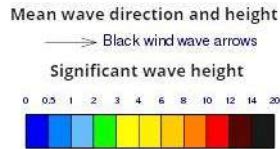
Wind and Rainfall Forecast (Total precipitation for 24 hrs)



Showers or thundershowers will occur at several places in the sea area extending from Puttalam to Galle via Colombo.

Wind speed will be 30-40 kmph in the sea areas around the island. The sea area extending from Kankasanturai to Puttalam via Mannar and from Galle to Pottuvil Via Hambantota can be rough at times as the wind speed may increase up to 50-60 kmph at times.

Significant wave height (in meters)



Wind Gust (m/s)

