



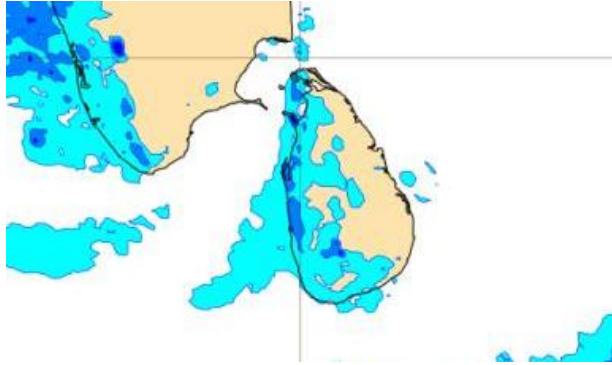
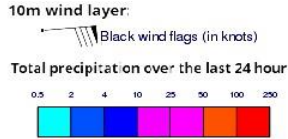
# **INFORMATION FUSION CENTRE COLOMBO**

**08 DAY FORECAST FOR COASTAL AREAS AROUND SRI LANKA**

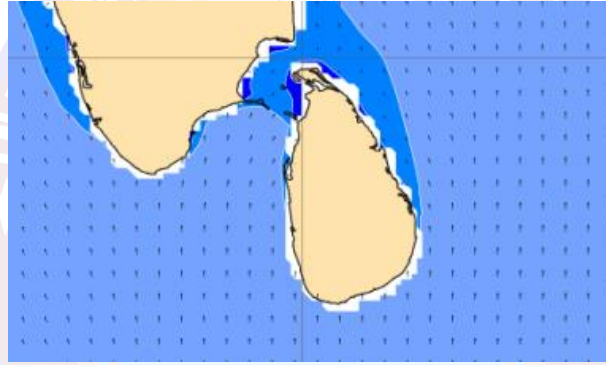
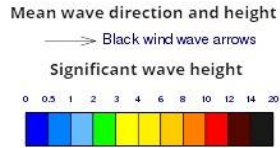
Issued at 10.00 p.m. on 18 April 2023  
Marine Weather Division, National Meteorological Centre, Department of  
Meteorology.



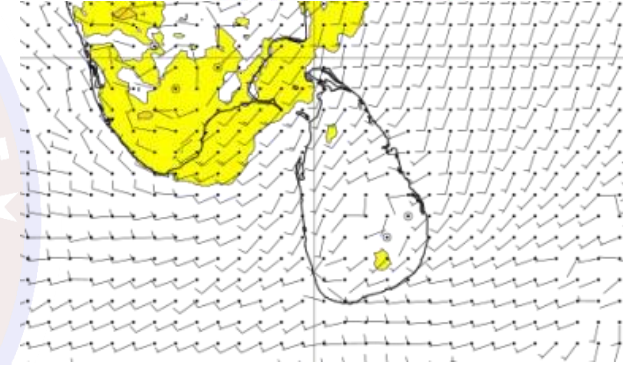
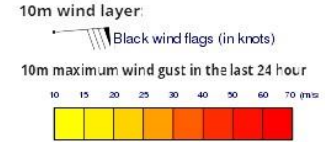
## Wind and Rainfall Forecast (Total precipitation for 24 hrs)



## Significant wave height (in meters)



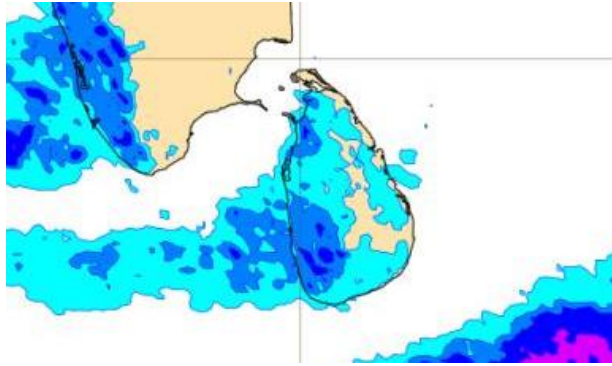
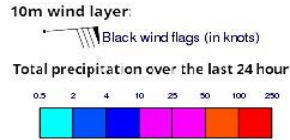
## Wind Gust (m/s)



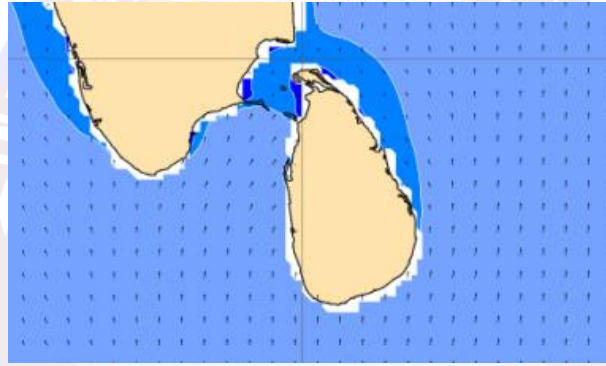
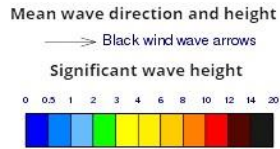
Showers or thunder showers will occur at a few places in the sea areas off the coast extending from Mannar to Galle via Puttalam and Colombo during the evening or night.

Wind speed will be 20-30 kmph in the sea areas around the island.

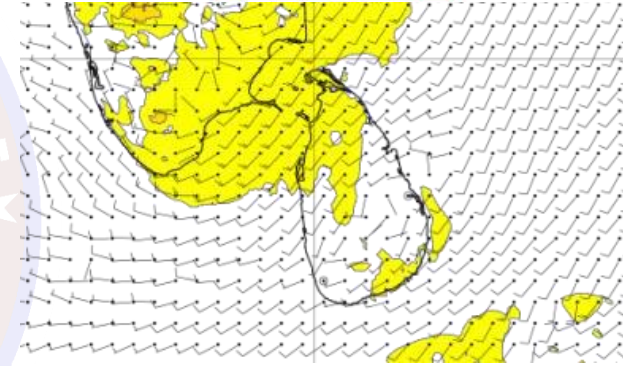
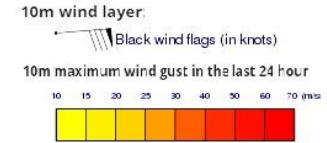
## Wind and Rainfall Forecast (Total precipitation for 24 hrs)



## Significant wave height (in meters)



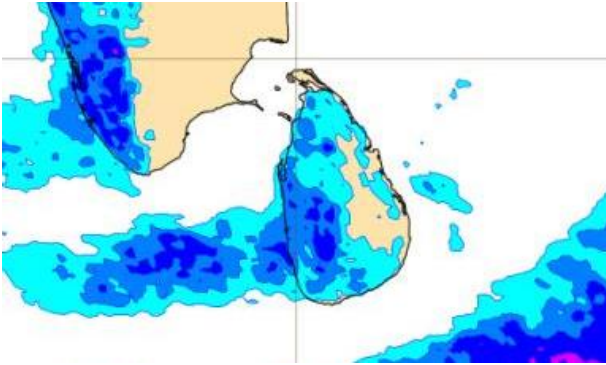
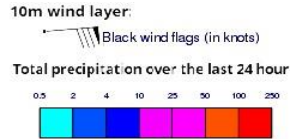
## Wind Gust (m/s)



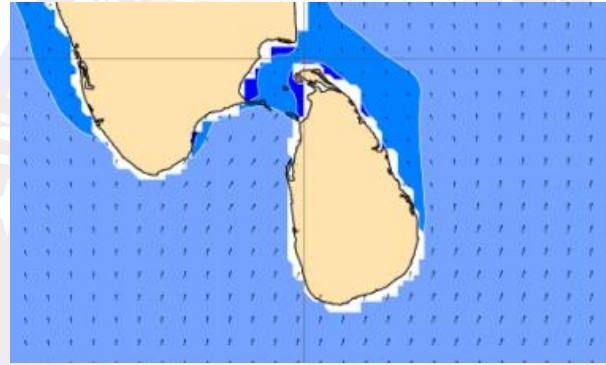
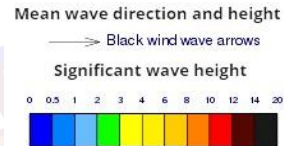
Showers or thunder showers will occur at a few places in the sea areas off the coast extending from Mannar to Galle via Puttalam and Colombo during the evening or night.

Wind speed will be 20-30 kmph in the sea areas around the island. The sea area extending from Puttalam to Kankasanturai via Mannar can be fairly rough as winds can be increase up to 40-45 kmph.

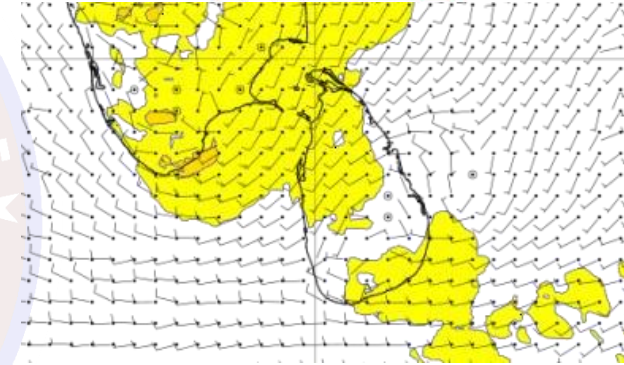
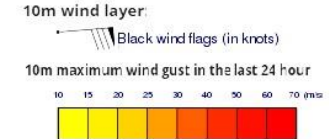
## Wind and Rainfall Forecast (Total precipitation for 24 hrs)



## Significant wave height (in meters)



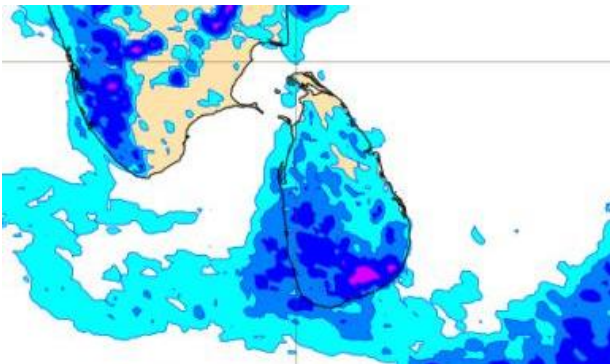
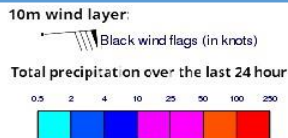
## Wind Gust (m/s)



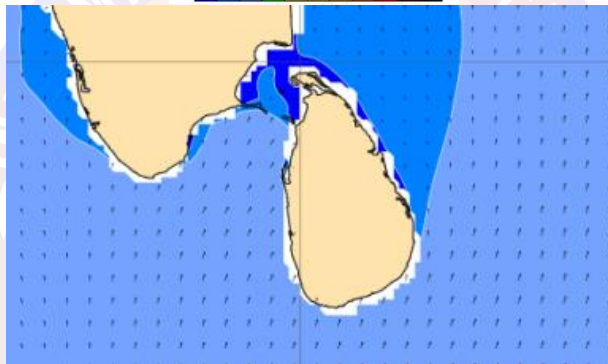
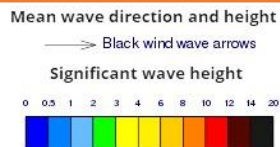
Showers or thunder showers will occur at a few places in the sea areas off the coast extending from Puttalam to Galle via Colombo during the night.

Wind speed will be 20-30 kmph in the sea areas around the island. The sea area extending from Puttalam to Kankasanturai via Mannar can be fairly rough as winds can be increase up to 40-45 kmph.

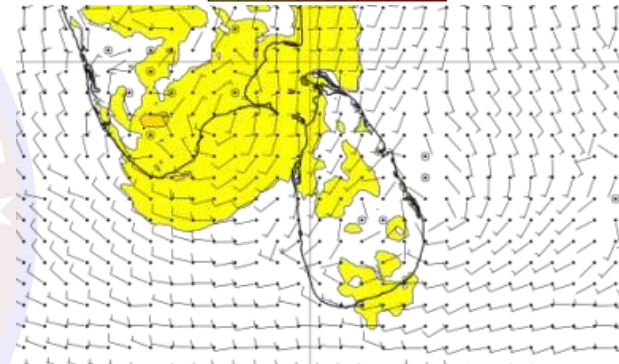
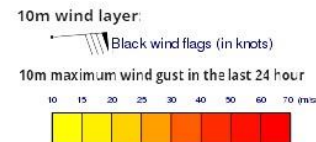
## Wind and Rainfall Forecast (Total precipitation for 24 hrs)



## Significant wave height (in meters)



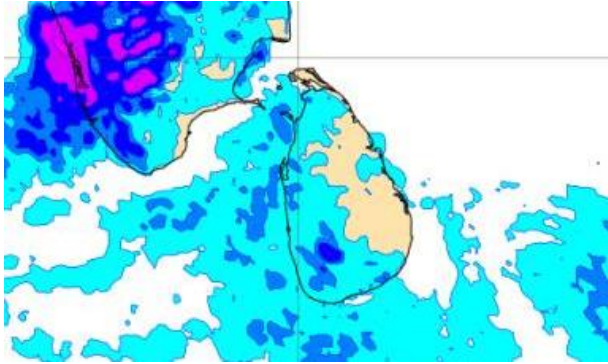
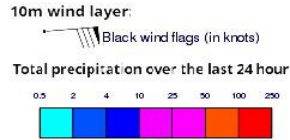
## Wind Gust (m/s)



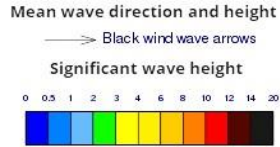
Showers or thunder showers will occur at a few places in the sea areas off the coast extending from Puttalam to Hambantota via Colombo and Galle during the evening or night.

Wind speed will be 20-30 kmph in the sea areas around the island. The sea area extending from Puttalam to Kankasanturai via Mannar can be fairly rough as winds can be increase up to 40-45 kmph.

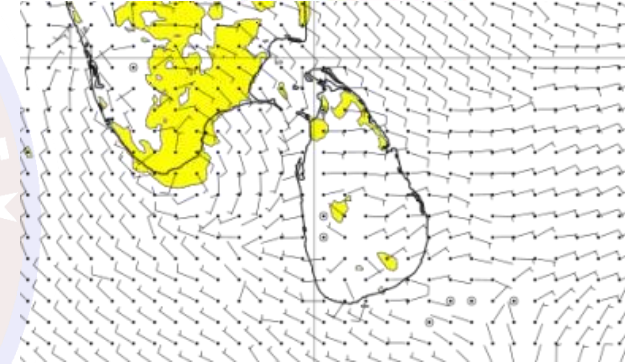
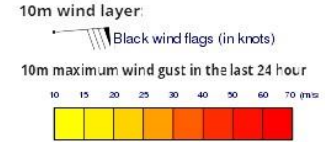
## Wind and Rainfall Forecast (Total precipitation for 24 hrs)



## Significant wave height (in meters)



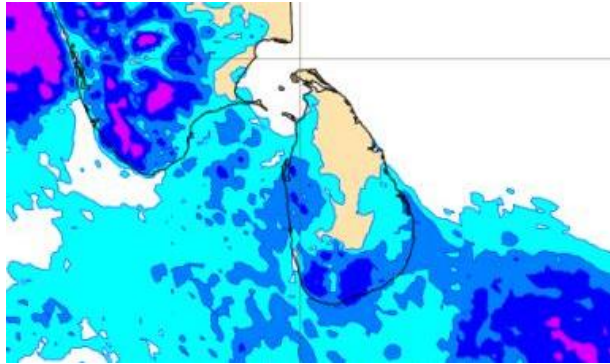
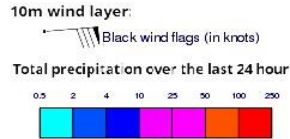
## Wind Gust (m/s)



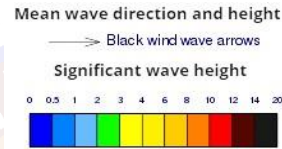
Showers or thunder showers may occur at a few places in the sea areas off the coast extending from Puttalam to Hambantota via Colombo and Galle during the evening or night.

Wind speed will be 20-30 kmph in the sea areas around the island.

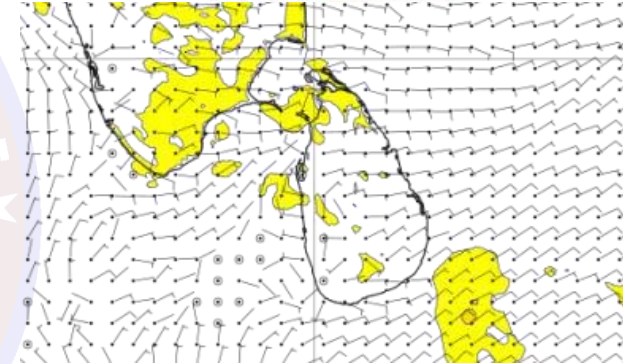
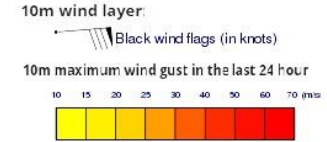
## Wind and Rainfall Forecast (Total precipitation for 24 hrs)



## Significant wave height (in meters)



## Wind Gust (m/s)

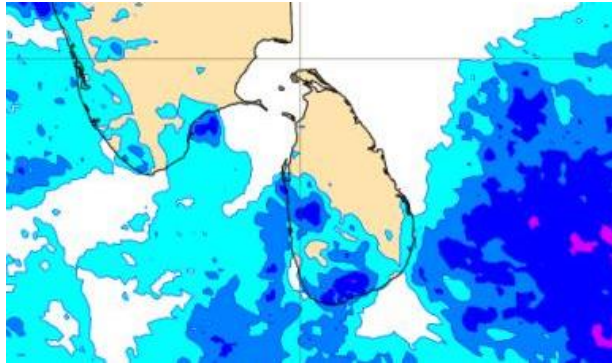
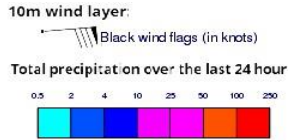


Several spells of showers may occur in the sea areas off the coast extending from Trincomalee to Pottuvil via Batticaloa. Showers or thunder showers will occur at a few places in the sea areas off the coast extending from Puttalam to Hambantota via Colombo and Galle during the evening or night.

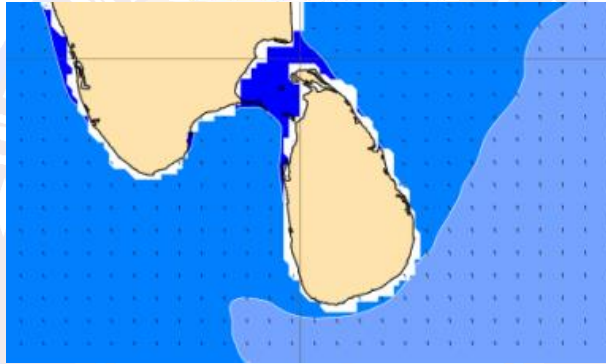
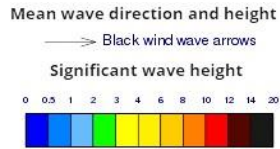
Wind speed will be 20-30 kmph in the sea areas around the island.



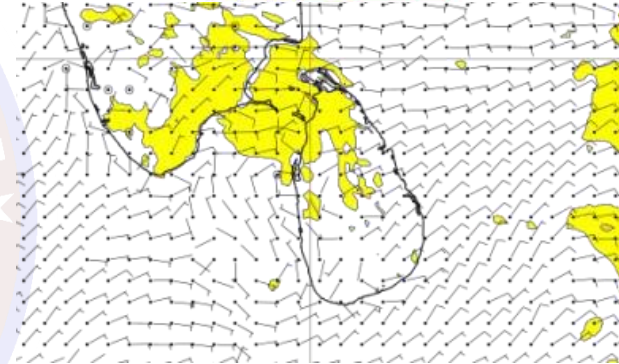
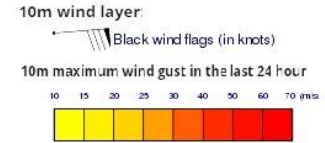
## Wind and Rainfall Forecast (Total precipitation for 24 hrs)



## Significant wave height (in meters)



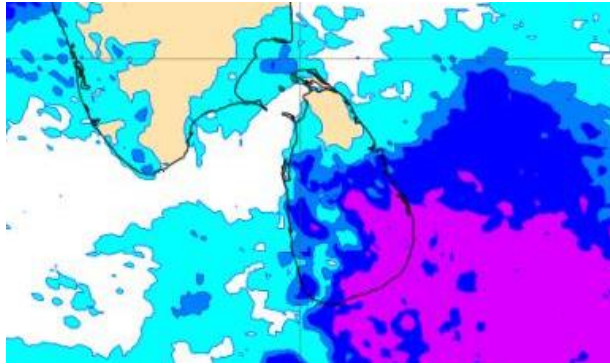
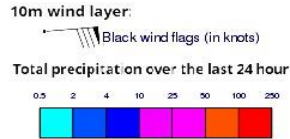
## Wind Gust (m/s)



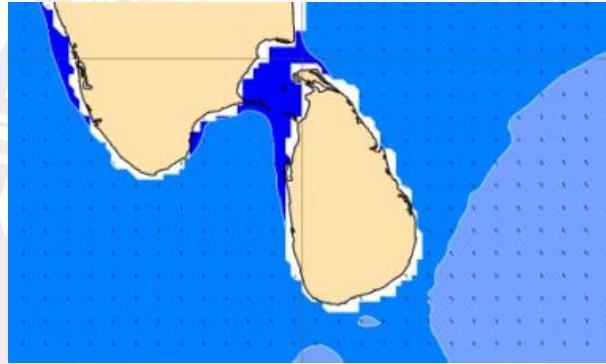
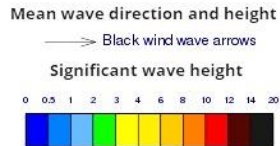
Several spells of showers may occur in the sea areas off the coast extending from Batticaloa to Pottuvil. Showers or thunder showers will occur at a few places in the sea areas off the coast extending from Puttalam to Hambantota via Colombo and Galle during the evening or night.

Wind speed will be 20-30 kmph in the sea areas around the island. The sea area extending from Puttalam to Kankasanturai via Mannar can be fairly rough as winds can be increase up to 40-45 kmph.

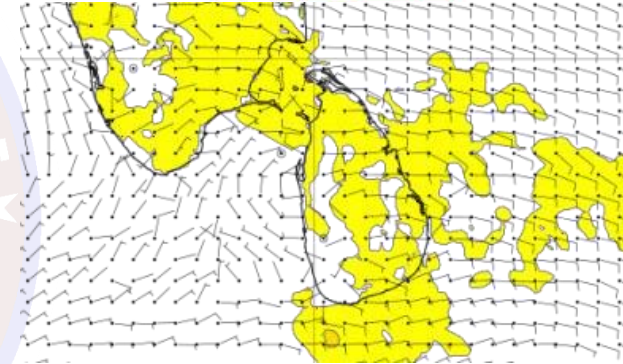
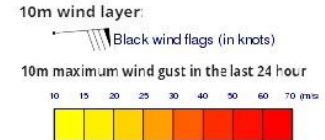
## Wind and Rainfall Forecast (Total precipitation for 24 hrs)



## Significant wave height (in meters)



## Wind Gust (m/s)



Showers or thunder showers will occur at times in the sea areas off the coast extending from Trincomalee to Hambantota via Batticaloa and Pottuvil. Thundershowers may occur at several places in the other sea areas particularly during the evening or night.

Wind speed will be 20-30 kmph in the sea areas around the island. The sea area extending from Galle to Hambantota via Matara and sea area extending from Mannar to Kankasanturai can be fairly rough as winds can be increase up to 40-45 kmph.