



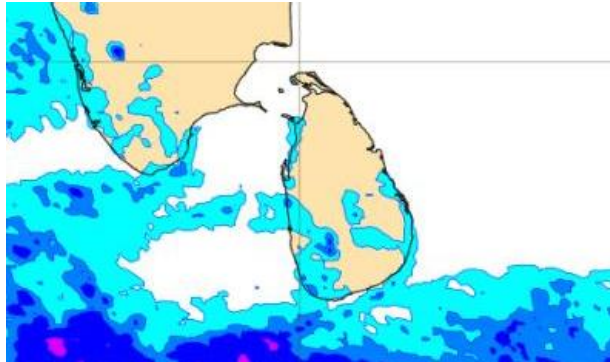
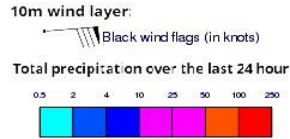
# **INFORMATION FUSION CENTRE COLOMBO**

**08 DAY FORECAST FOR COASTAL AREAS AROUND SRI LANKA**

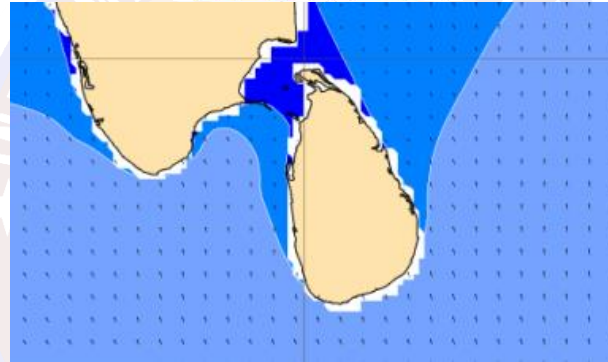
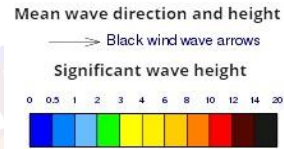
Issued at 10.00 p.m. on 10 April 2023  
Marine Weather Division, National Meteorological Centre, Department of  
Meteorology.



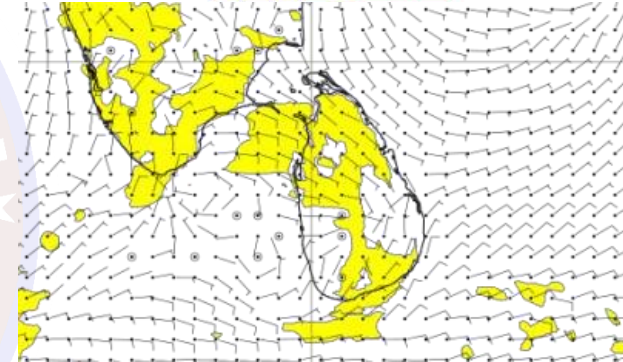
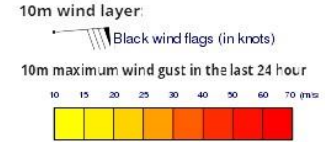
## Wind and Rainfall Forecast (Total precipitation for 24 hrs)



## Significant wave height (in meters)



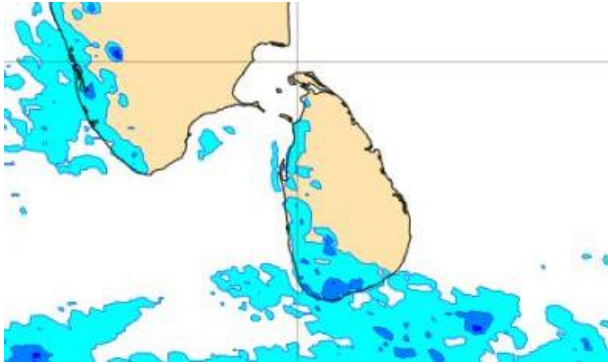
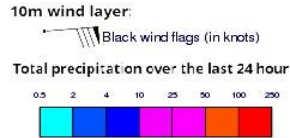
## Wind Gust (m/s)



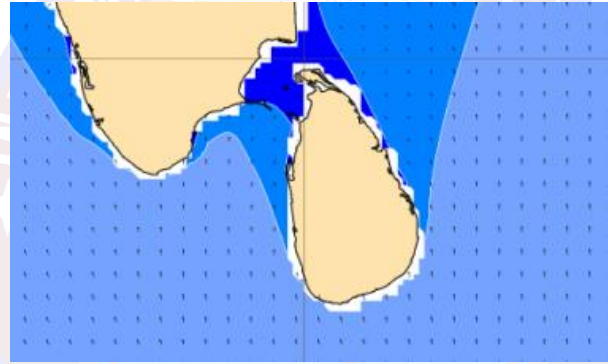
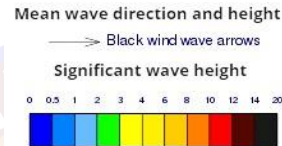
Showers or thunder showers may occur at a few places in the sea areas off the coast extending from Puttalam to Galle via Colombo during the evening or night.

Wind speed will be 20-30 kmph in the sea areas around the island. The sea area extending from Kankasanturai to Kalpitiya can be moderately rough as winds can be increase up to 45 kmph.

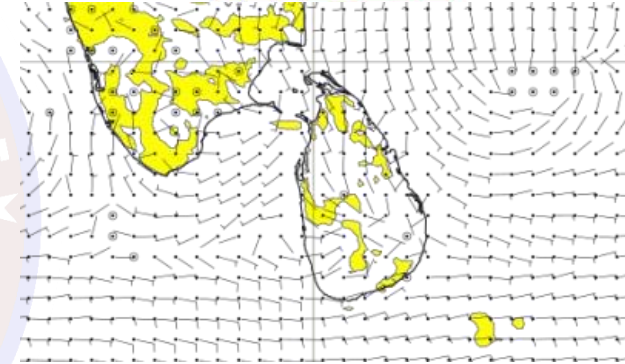
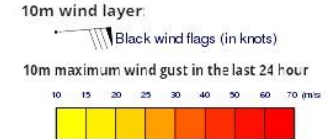
## Wind and Rainfall Forecast (Total precipitation for 24 hrs)



## Significant wave height (in meters)



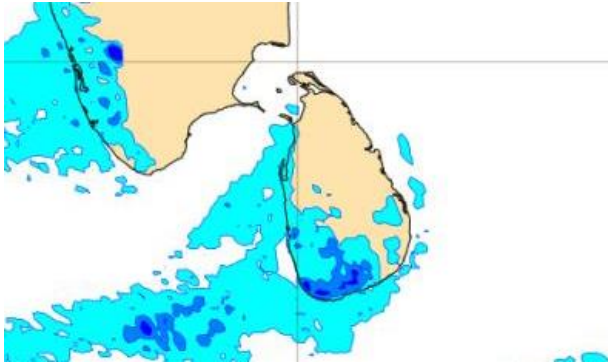
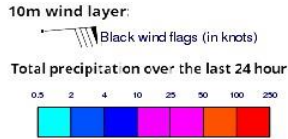
## Wind Gust (m/s)



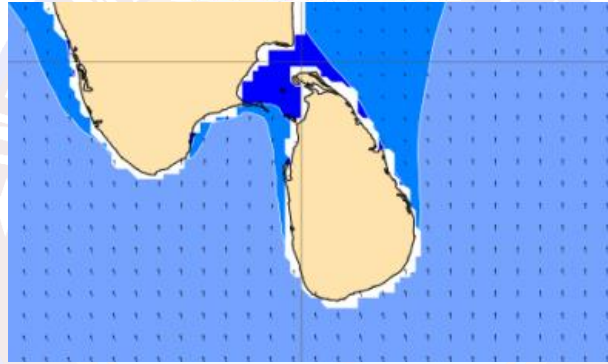
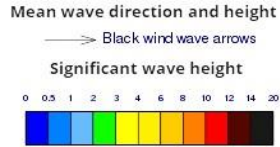
Showers or thunder showers may occur at a few places in the sea areas off the coast extending from Colombo to Hambantota via Galle during the evening or night.

Wind speed will be 20-30 kmph in the sea areas around the island.

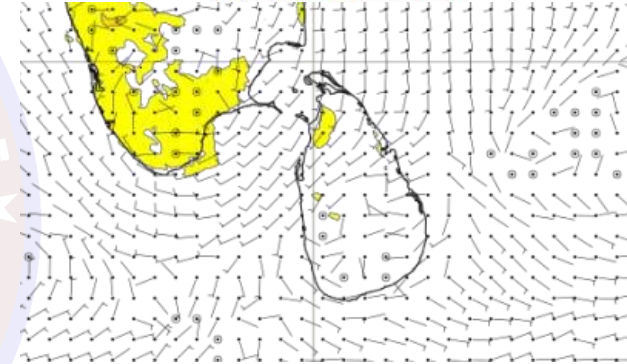
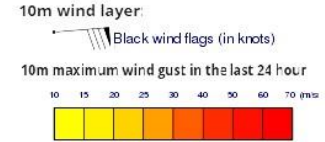
## Wind and Rainfall Forecast (Total precipitation for 24 hrs)



## Significant wave height (in meters)



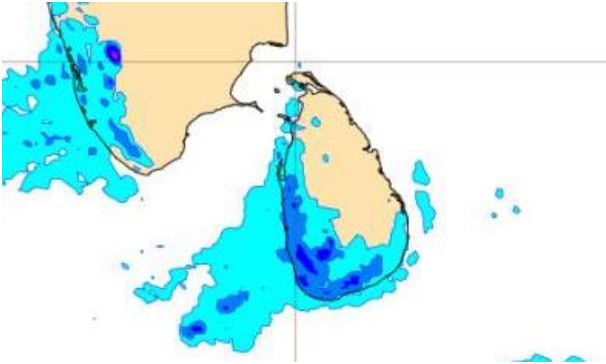
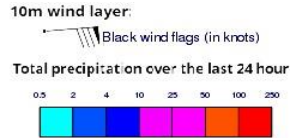
## Wind Gust (m/s)



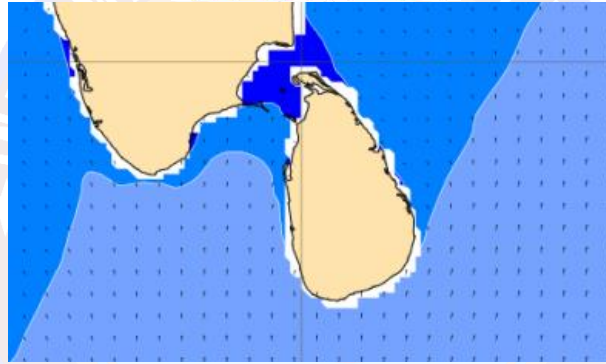
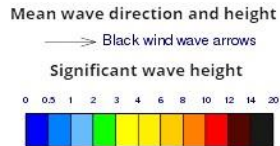
Showers or thunder showers may occur at a few places in the sea areas off the coast extending from Colombo to Hambantota via Galle during the evening or night.

Wind speed will be 20-30 kmph in the sea areas around the island.

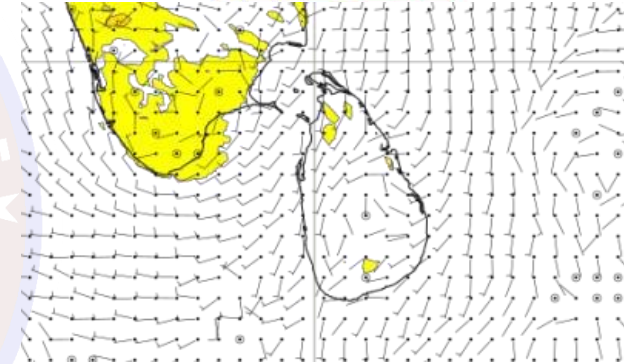
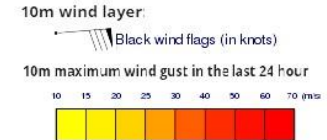
## Wind and Rainfall Forecast (Total precipitation for 24 hrs)



## Significant wave height (in meters)



## Wind Gust (m/s)

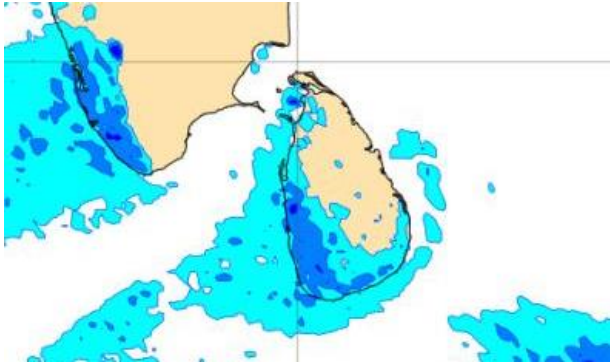
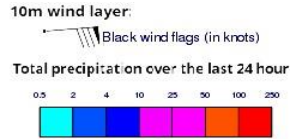


Showers or thunder showers will occur at a few places in the sea areas off the coast extending from Puttalam to Hambantota via Colombo and Galle during the evening or night.

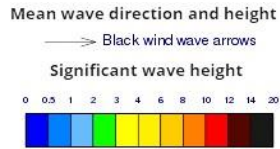
Wind speed will be 20-30 kmph in the sea areas around the island.



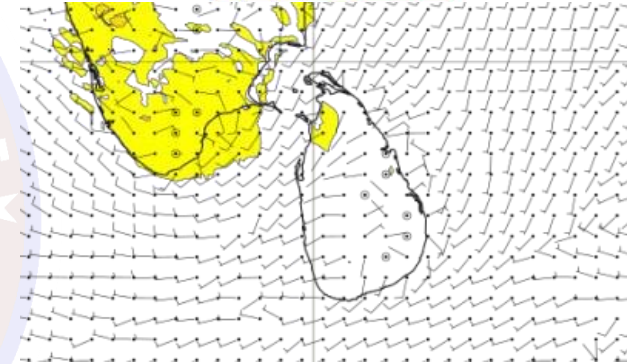
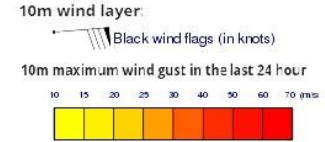
## Wind and Rainfall Forecast (Total precipitation for 24 hrs)



## Significant wave height (in meters)



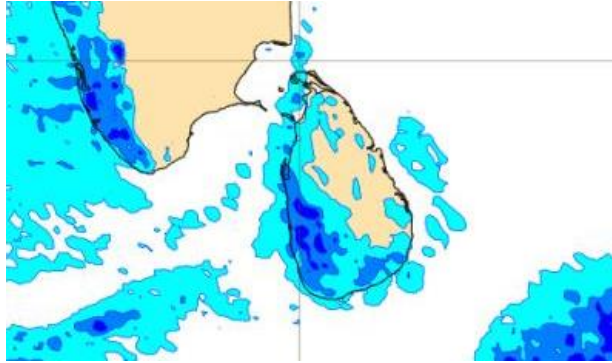
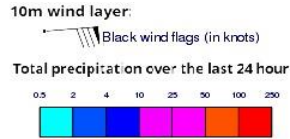
## Wind Gust (m/s)



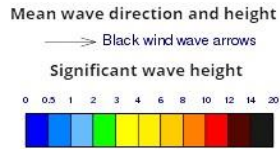
Showers or thunder showers will occur at a few places in the sea areas off the coast extending from Puttalam to Hambantota via Colombo and Galle during the evening or night.

Wind speed will be 20-30 kmph in the sea areas around the island.

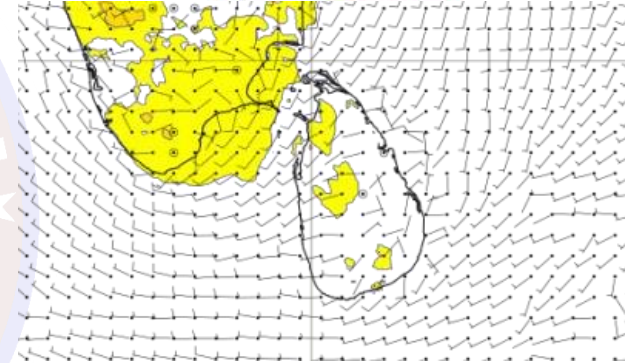
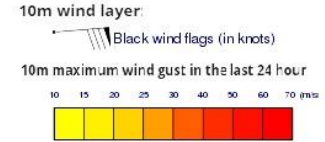
## Wind and Rainfall Forecast (Total precipitation for 24 hrs)



## Significant wave height (in meters)



## Wind Gust (m/s)

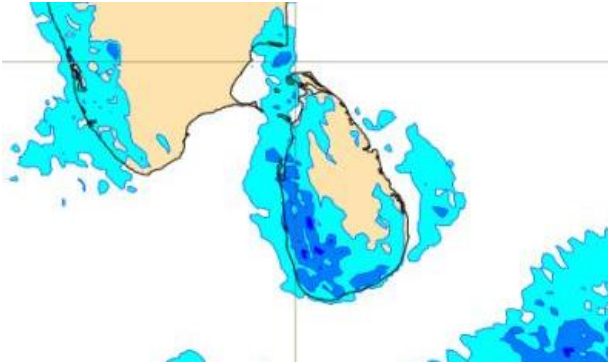
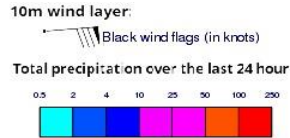


Showers or thunder showers will occur at a few places in the sea areas off the coast extending from Puttalam to Hambantota via Colombo and Galle during the evening or night.

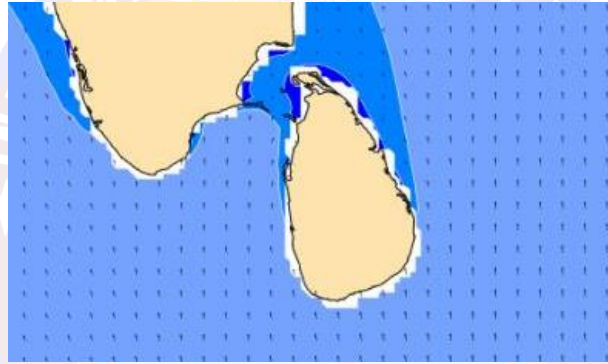
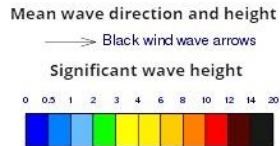
Wind speed will be 20-30 kmph in the sea areas around the island.



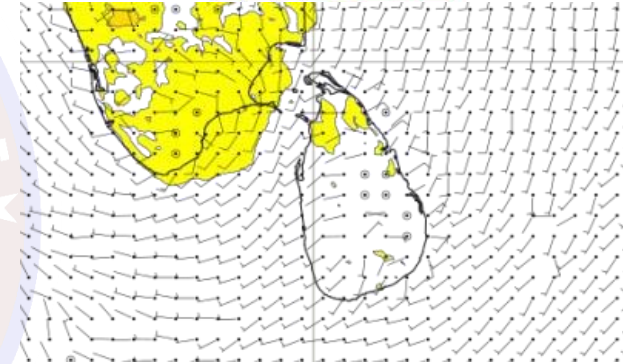
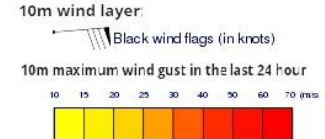
## Wind and Rainfall Forecast (Total precipitation for 24 hrs)



## Significant wave height (in meters)



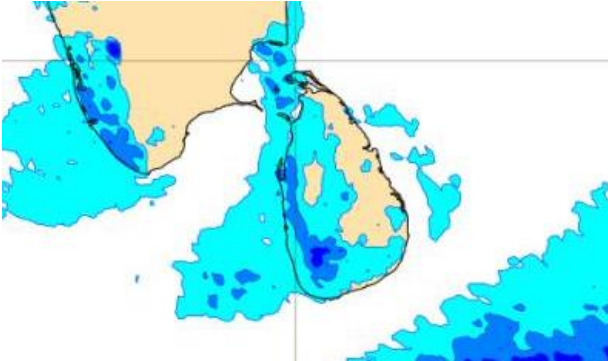
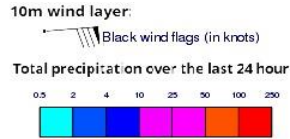
## Wind Gust (m/s)



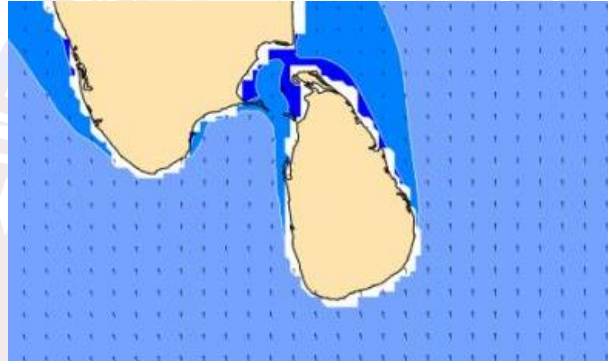
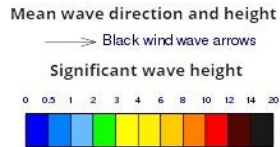
Showers or thunder showers may occur at a few places in the sea areas off the coast extending from Puttalam to Hambantota via Colombo and Galle during the evening or night..

Wind speed will be 20-30 kmph in the sea areas around the island.

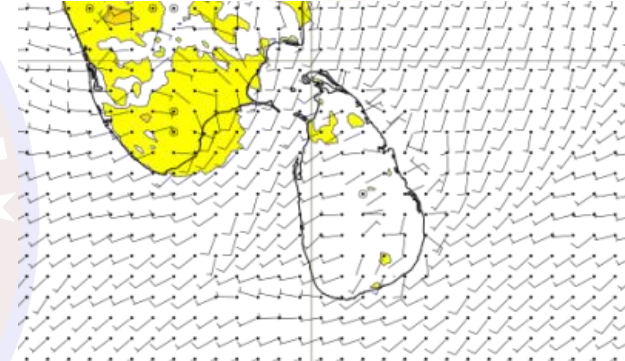
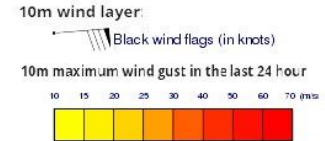
## Wind and Rainfall Forecast (Total precipitation for 24 hrs)



## Significant wave height (in meters)



## Wind Gust (m/s)



Showers or thunder showers may occur at a few places in the sea areas off the coast extending from Puttalam to Matara via Colombo and Galle during the evening or night.

Wind speed will be 20-30 kmph in the sea areas around the island.