



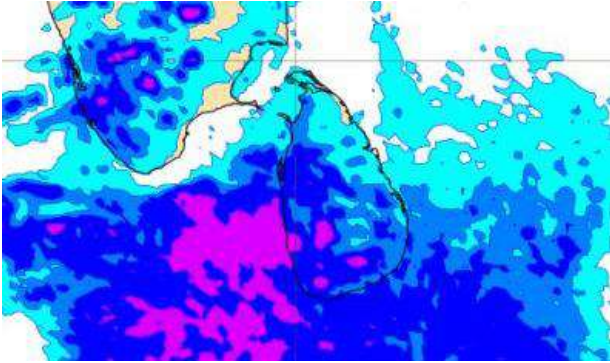
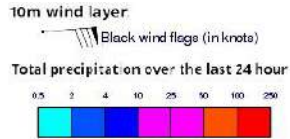
# **INFORMATION FUSION CENTRE COLOMBO**

**07 DAY FORECAST FOR COASTAL AREAS AROUND SRI LANKA**

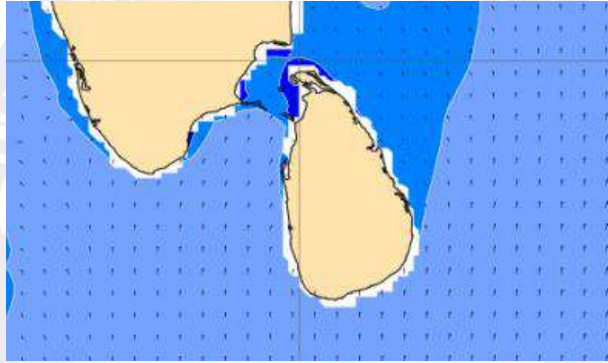
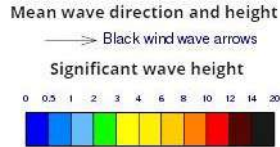
Issued at 10.00 p.m. on 02<sup>rd</sup> April 2023  
Marine Weather Division, National Meteorological Centre, Department of  
Meteorology.



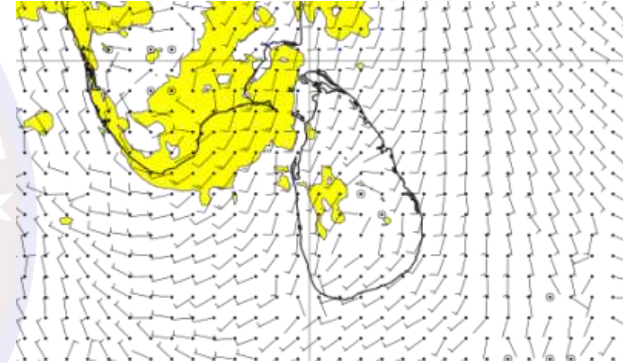
## Wind and Rainfall Forecast (Total precipitation for 24 hrs)



## Significant wave height (in meters)



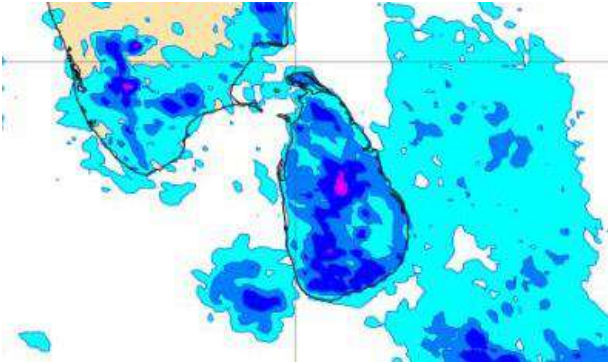
## Wind Gust (m/s)



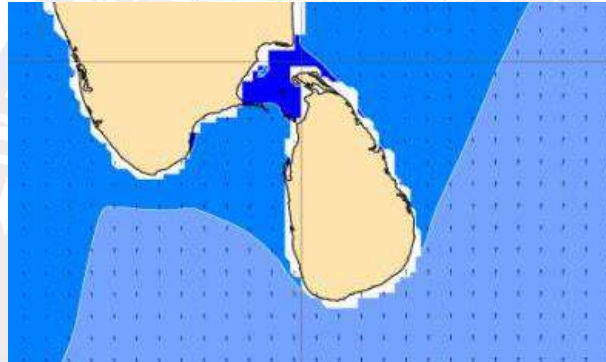
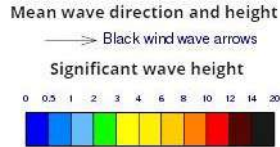
Showers or thundershowers will occur at several places in the sea areas off the coast extending from Puttalam to Batticaloa via Colombo, Galle, Hambantota and Pottuvil during the night.

Wind speed will be 20-30 kmph in the sea areas around the island.

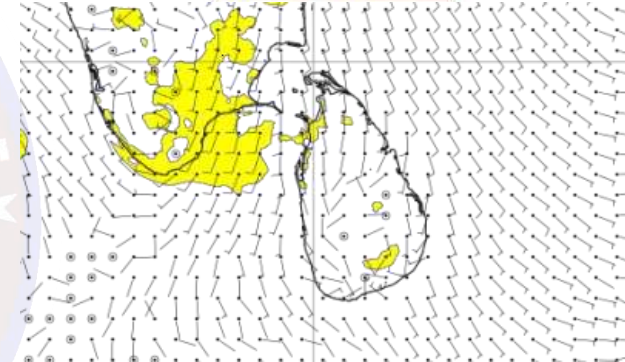
## Wind and Rainfall Forecast (Total precipitation for 24 hrs)



## Significant wave height (in meters)



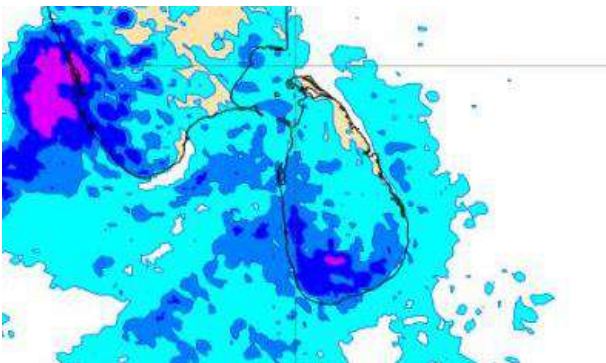
## Wind Gust (m/s)



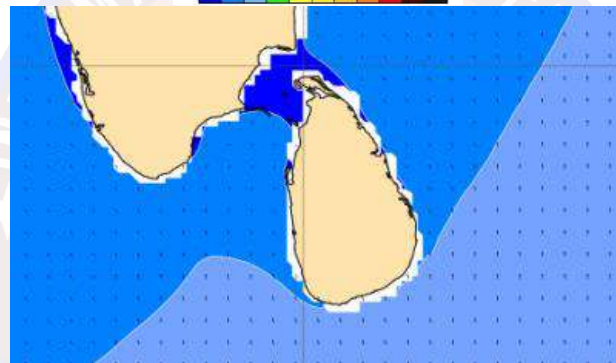
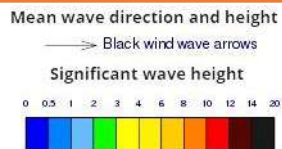
Showers or thunder showers will occur at a few places in the sea areas off the coast extending from Mannar to Matara via Puttalam, Colombo and Galle and in the sea areas off the coast extending from Pottuvil to Trincomalee via Batticaloa.

Wind speed will be 20-30 kmph in the sea areas around the island.

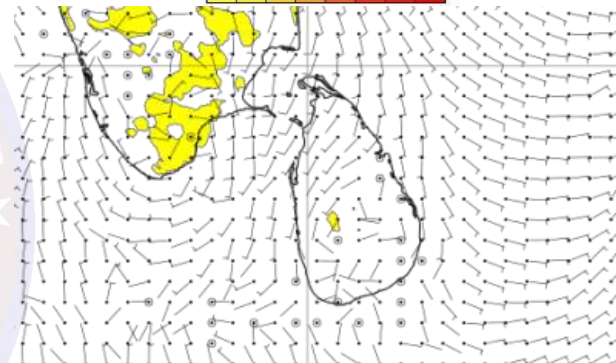
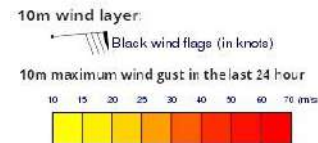
## Wind and Rainfall Forecast (Total precipitation for 24 hrs)



## Significant wave height (in meters)



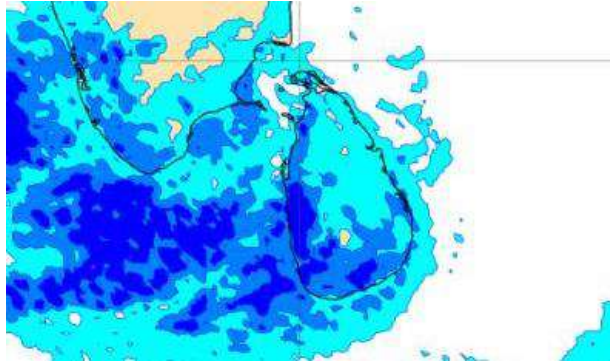
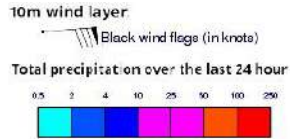
## Wind Gust (m/s)



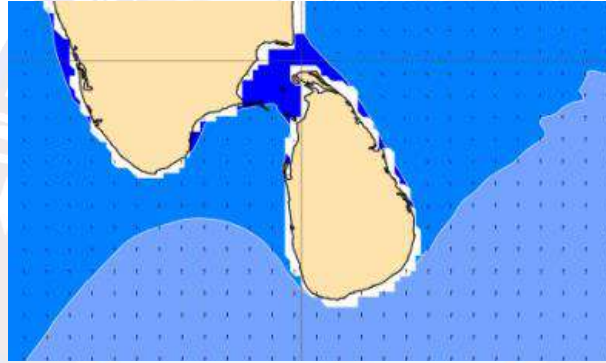
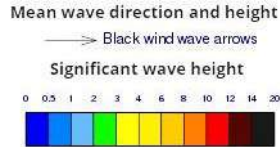
Showers or thunder showers will occur at a few places in the sea areas off the coast extending from Mannar to Matara via Puttalam, Colombo and Galle and in the sea areas off the coast extending from Pottuvil to Trincomalee via Batticaloa.

Wind speed will be 20-30 kmph in the sea areas around the island.

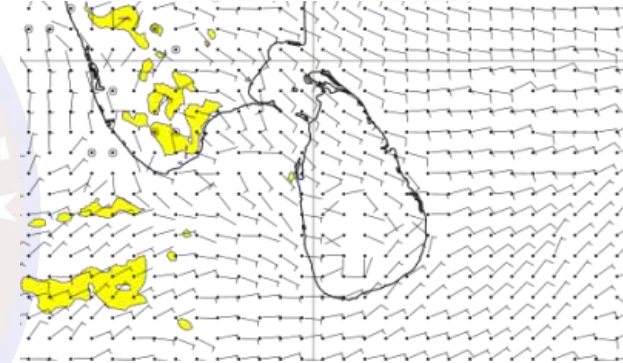
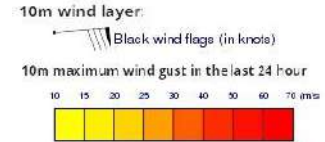
## Wind and Rainfall Forecast (Total precipitation for 24 hrs)



## Significant wave height (in meters)



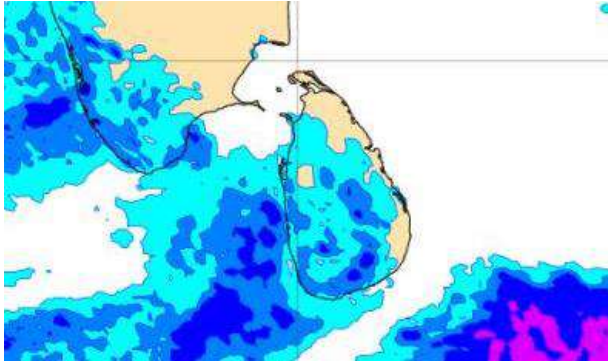
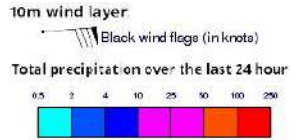
## Wind Gust (m/s)



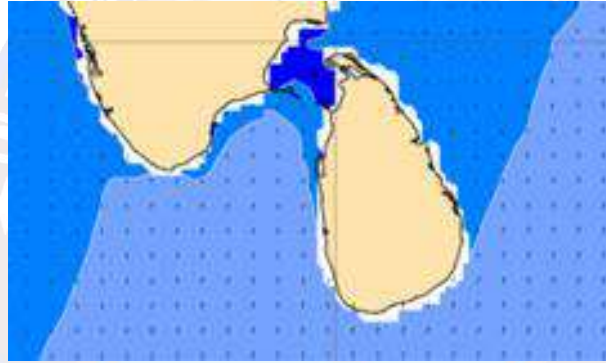
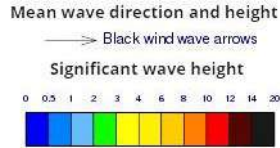
Showers or thunder showers will occur at a few places in the sea areas off the coast extending from Mannar to Matara via Puttalam, Colombo and Galle and in the sea areas off the coast extending from Pottuvil to Trincomalee via Batticaloa.

Wind speed will be 20-30 kmph in the sea areas around the island.

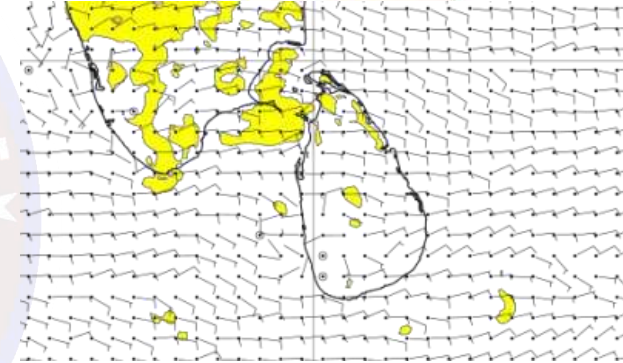
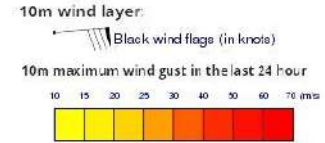
## Wind and Rainfall Forecast (Total precipitation for 24 hrs)



## Significant wave height (in meters)



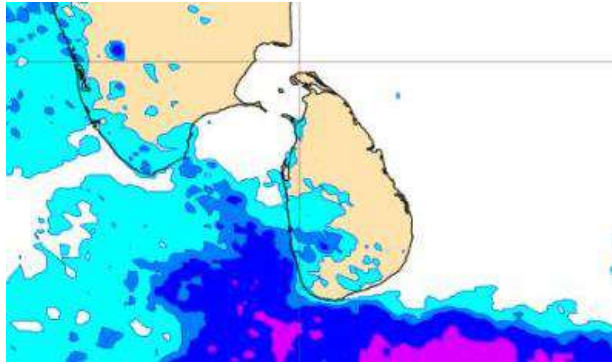
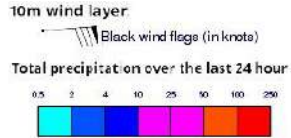
## Wind Gust (m/s)



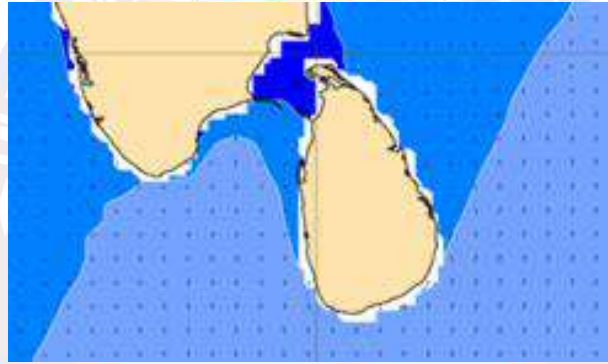
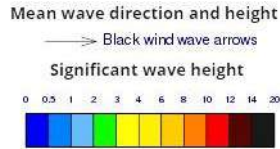
Showers or thundershowers will occur at a few places in the sea areas off the coast extending from Puttalam to Hambantota via Colombo and Galle during the night.

Wind speed will be 20-30 kmph in the sea areas around the island.

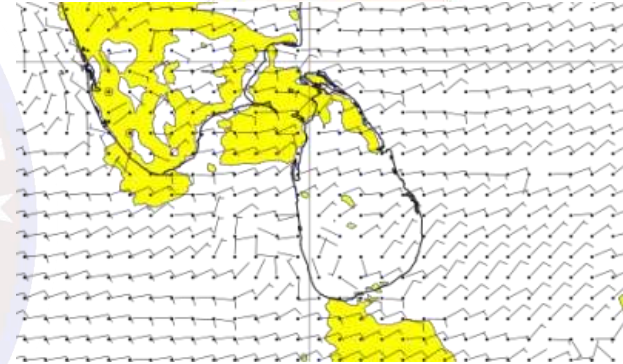
## Wind and Rainfall Forecast (Total precipitation for 24 hrs)



## Significant wave height (in meters)



## Wind Gust (m/s)

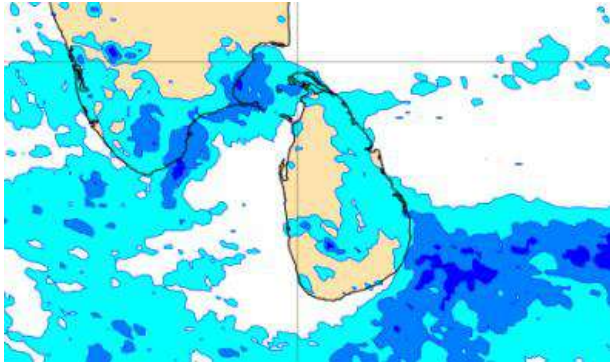
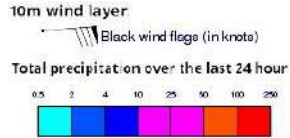


Showers or thundershowers will occur at a few places in the sea areas off the coast extending from Puttalam to Hambantota via Colombo and Galle during the night.

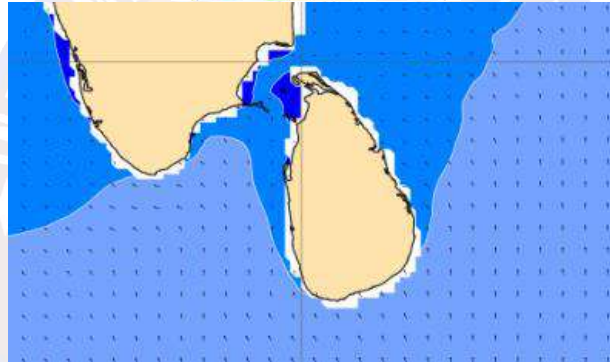
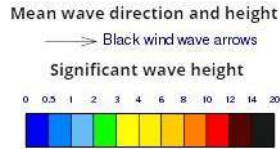
Wind speed will be 20-30 kmph in the sea areas around the island.



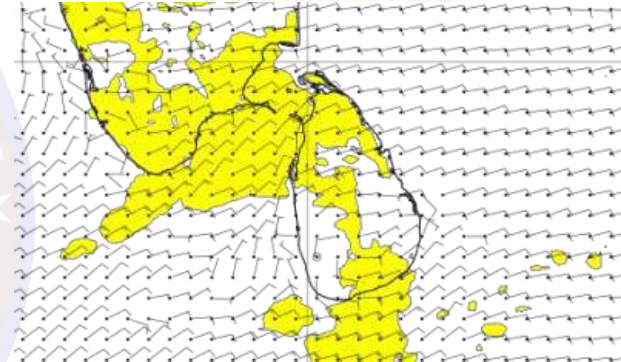
### Wind and Rainfall Forecast (Total precipitation for 24 hrs)



### Significant wave height (in meters)



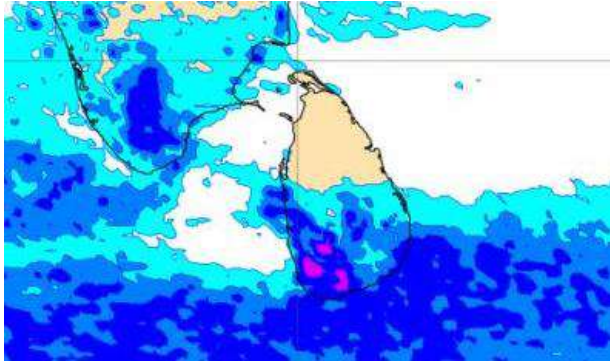
### Wind Gust (m/s)



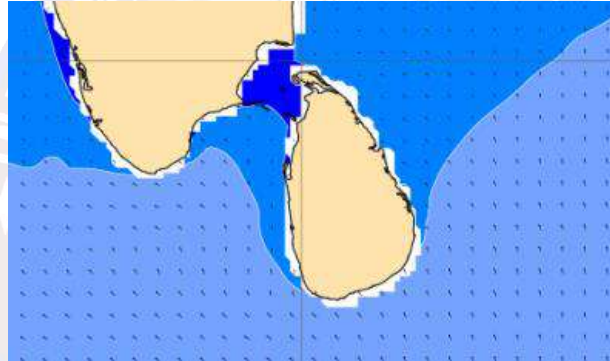
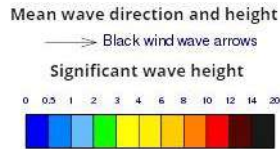
Showers or thunder showers will occur at a few places in the sea areas off the coast extending Pottuvil to Trincomalee via Batticaloa.

Wind speed will be 20-30 kmph in the sea areas around the island.

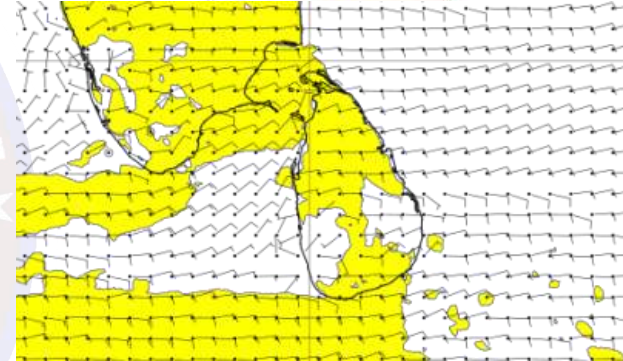
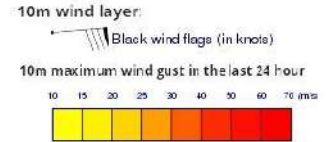
## Wind and Rainfall Forecast (Total precipitation for 24 hrs)



## Significant wave height (in meters)



## Wind Gust (m/s)



Showers or thunder showers will occur at several places in the sea areas off the coast extending from Puttalam to Pottuvil via Colombo, Galle and Hambantota in the sea areas off the coast extending from Trincomalee via Batticaloa.

Wind speed will be 20-30 kmph in the sea areas around the island.