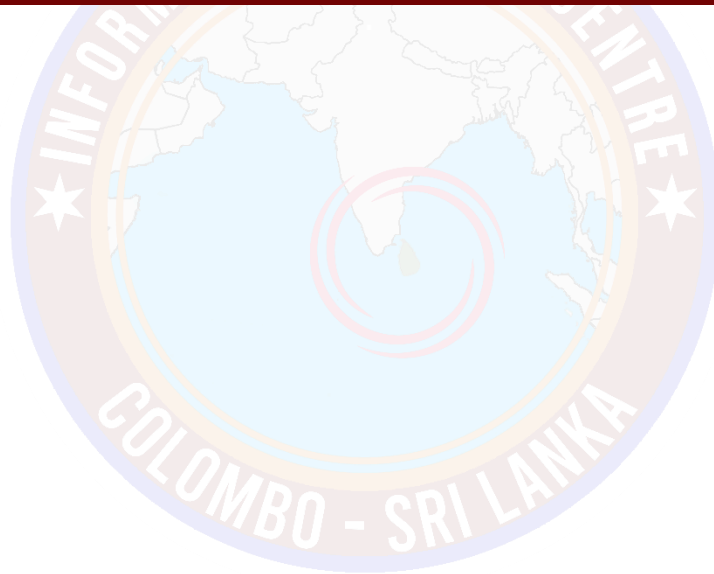


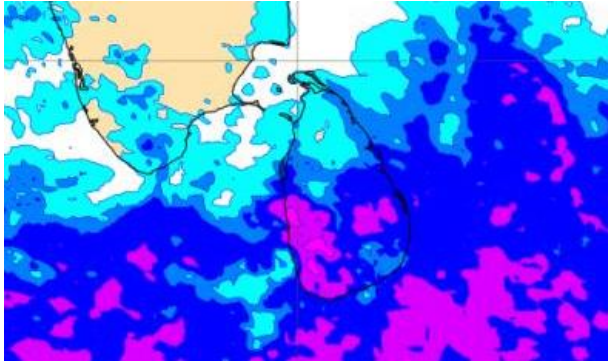
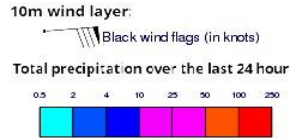
INFORMATION FUSION CENTRE COLOMBO

8 DAY FORECAST FOR COASTAL AREAS AROUND SRI LANKA

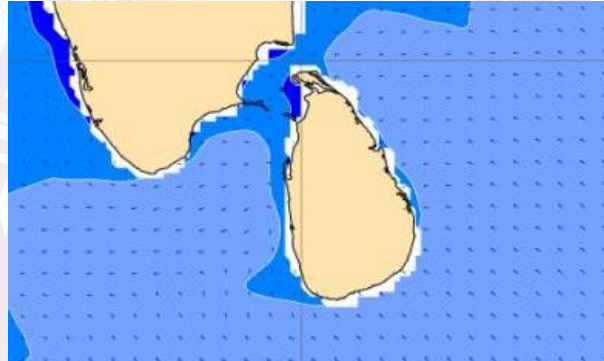
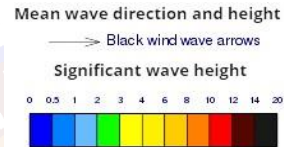
Issued at 10.00 p.m. on 10th March 2023
Marine Weather Division, National Meteorological Centre, Department of
Meteorology.



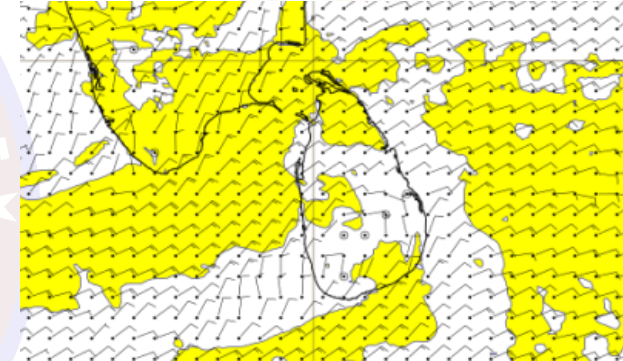
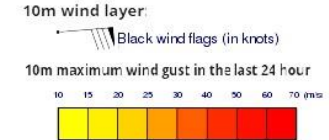
Wind and Rainfall Forecast (Total precipitation for 24 hrs)



Significant wave height (in meters)



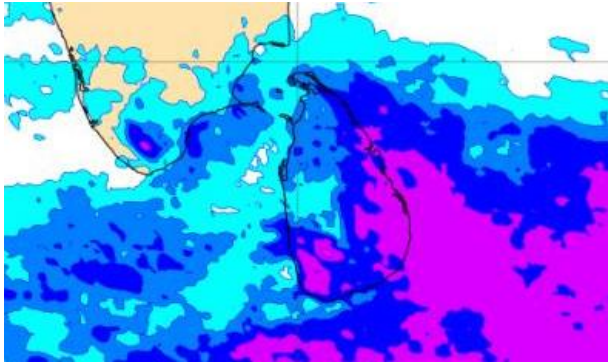
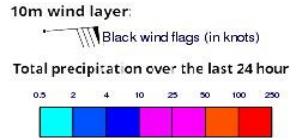
Wind Gust (m/s)



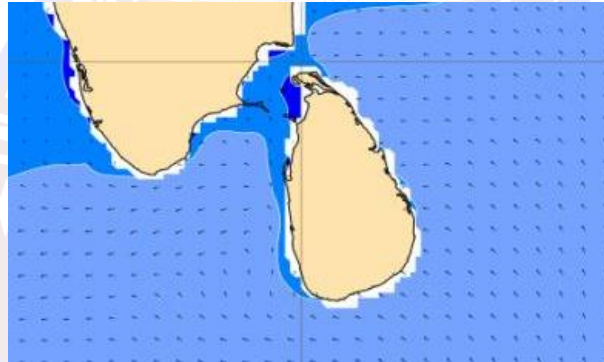
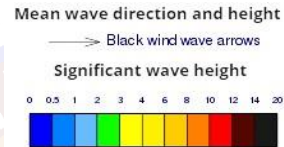
Several spells of showers will occur in the sea area off the coast extending from Pottuvil to Trincomalee via Batticaloa. Showers or thundershowers may occur at several places in the sea area off the coast extending from Puttalam to Galle via Colombo during the evening or night.

Wind speed will be 25-35 kmph in the sea areas around the island. The sea areas off the coast extending from Kankasanturai to Colombo via Puttalam and from Galle to Hambantota can be fairly rough at times as the wind speed can increase up to 45 kmph at times.

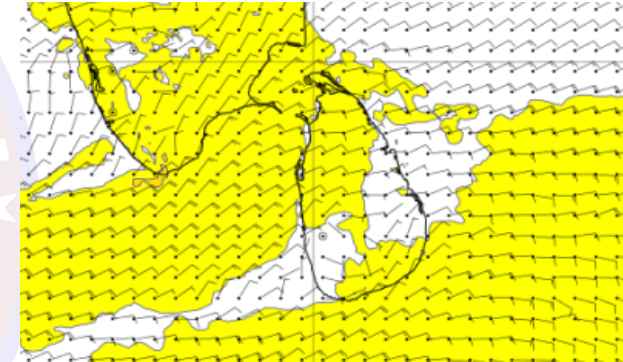
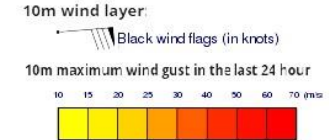
Wind and Rainfall Forecast (Total precipitation for 24 hrs)



Significant wave height (in meters)



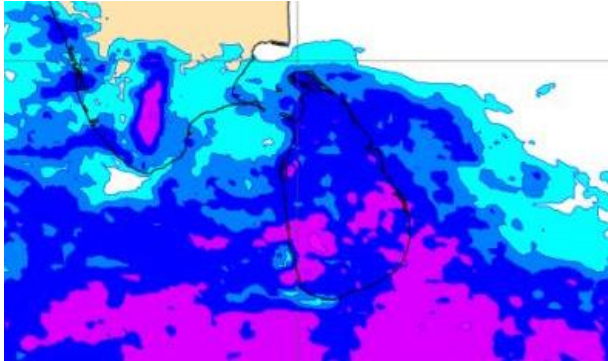
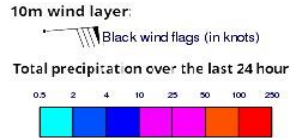
Wind Gust (m/s)



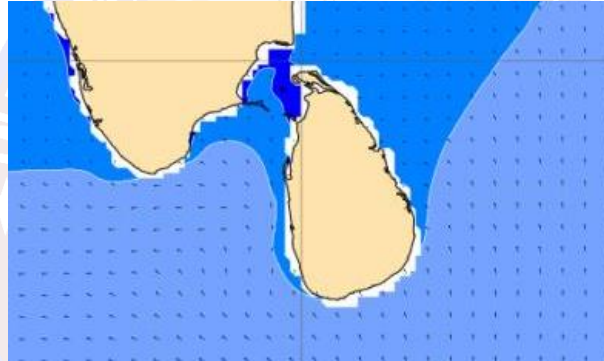
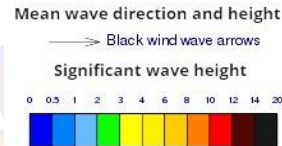
Showers or thundershowers will occur at times in the sea area off the coast extending from Pottuvil to Kankasanturai via Batticaloa and Trincomalee. Showers or thundershowers may occur at several places in the sea area off the coast extending from Puttalam to Galle via Colombo during the evening or night.

Wind speed will be 25-35 kmph in the sea areas around the island. The sea areas off the coast extending from Kankasanturai to Colombo via Puttalam and from Galle to Pottuvil via Hambantota can be fairly rough at times as the wind speed can increase up to 40-50 kmph at times.

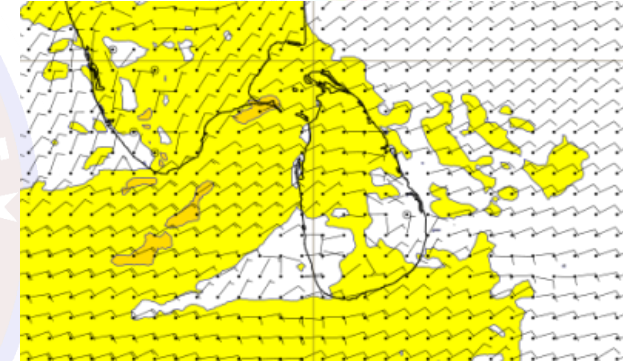
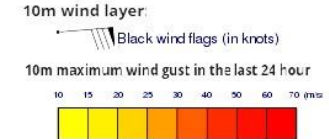
Wind and Rainfall Forecast (Total precipitation for 24 hrs)



Significant wave height (in meters)



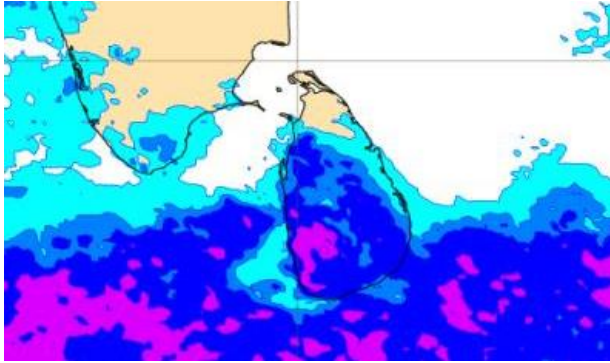
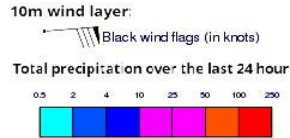
Wind Gust (m/s)



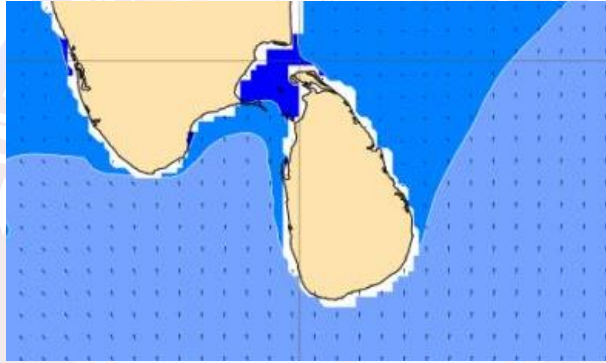
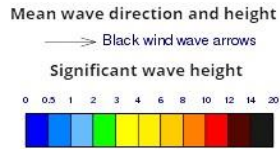
Showers or thundershowers will occur at times in the sea area off the coast extending from Pottuvil to Kankasanturai via Batticaloa and Trincomalee. Showers or thundershowers may occur at several places in the sea area off the coast extending from Puttalam to Galle via Colombo during the evening or night.

Wind speed will be 25-35 kmph in the sea areas around the island. The sea areas off the coast extending from Kankasanturai to Colombo via Puttalam and from Galle to Pottuvil via Hambantota can be fairly rough at times as the wind speed can increase up to 40-50 kmph at times.

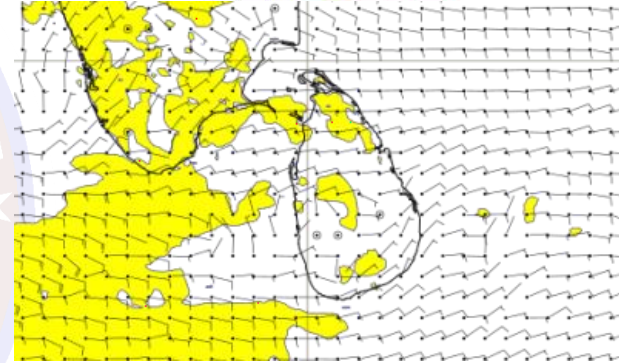
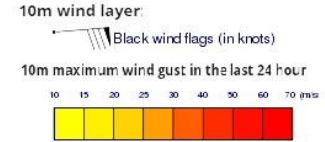
Wind and Rainfall Forecast (Total precipitation for 24 hrs)



Significant wave height (in meters)



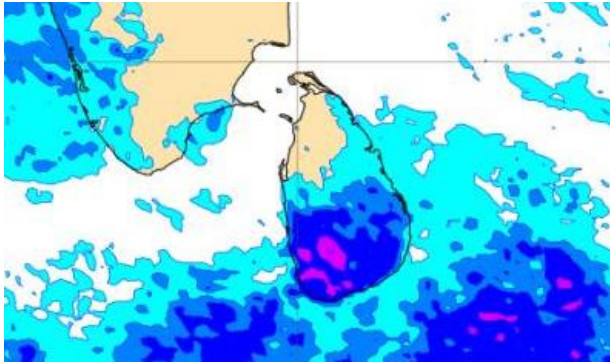
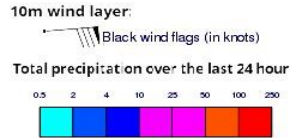
Wind Gust (m/s)



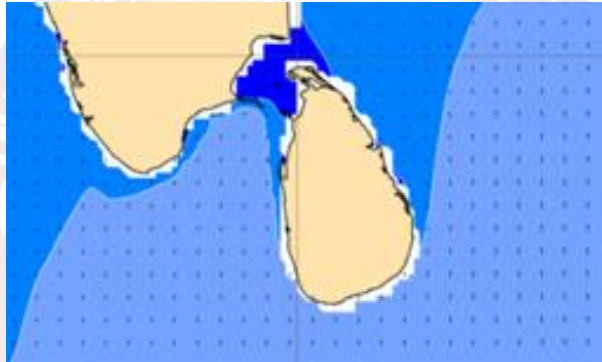
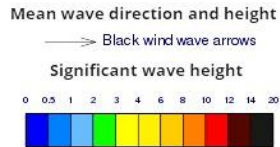
Several spells of showers will occur in the sea area off the coast extending from Pottuvil to Trincomalee via Batticaloa. Showers or thundershowers may occur at several places in the sea area off the coast extending from Puttalam to Galle via Colombo during the evening or night.

Wind speed will be 25-35 kmph in the sea areas around the island. The sea areas off the coast extending from Kankasanturai to Colombo via Puttalam and from Galle to Hambantota can be fairly rough at times as the wind speed can increase up to 45 kmph at times.

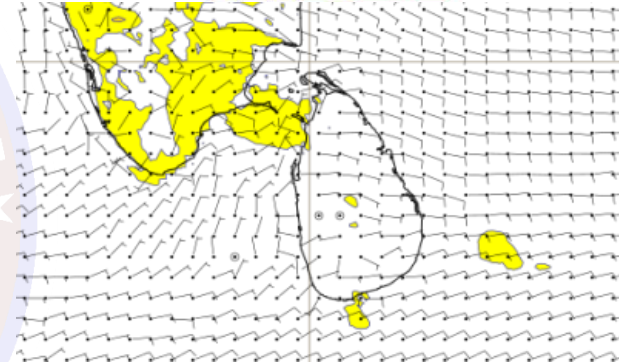
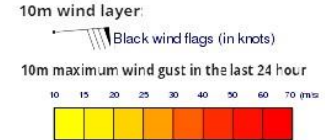
Wind and Rainfall Forecast (Total precipitation for 24 hrs)



Significant wave height (in meters)



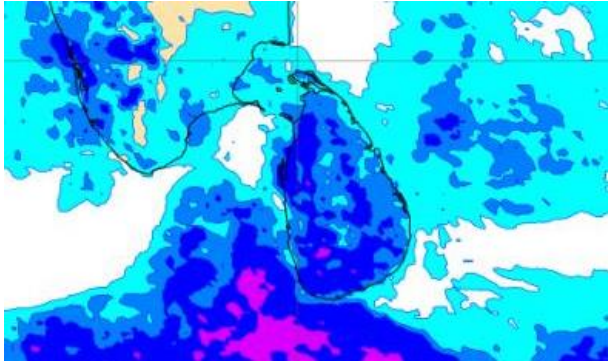
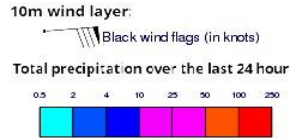
Wind Gust (m/s)



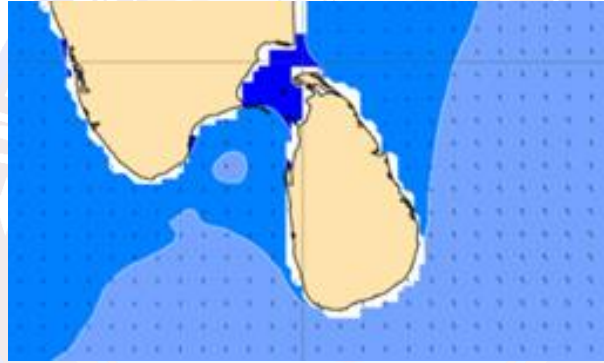
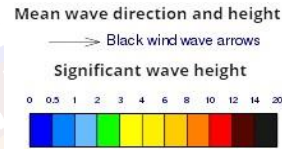
Showers or thundershowers will occur at a few places in the sea area off the coast extending from Hambantota to Trincomalee via Pottuvil and Batticaloa. Showers or thundershowers may occur at several places in the sea area off the coast extending from Colombo to Hambantota via Galle during the evening or night.

Wind speed will be 25-35 kmph in the sea areas around the island.

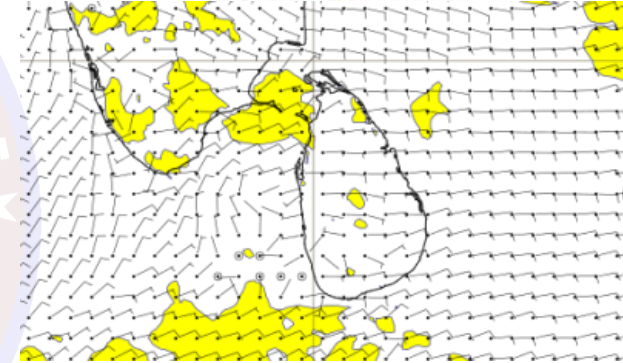
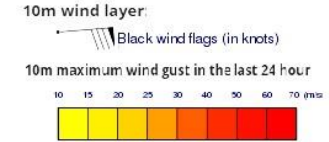
Wind and Rainfall Forecast (Total precipitation for 24 hrs)



Significant wave height (in meters)



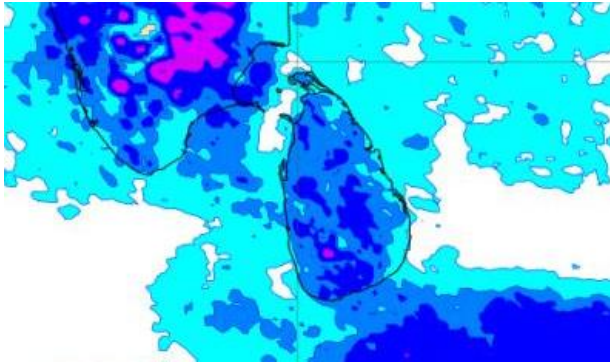
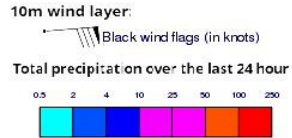
Wind Gust (m/s)



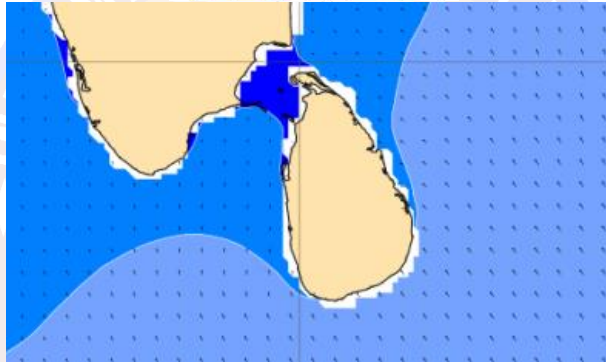
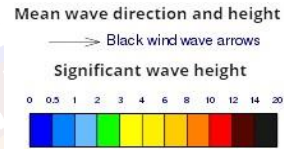
Showers or thundershowers will occur at a few places in the sea area off the coast extending from Pottuvil to Trincomalee via Batticaloa. Showers or thundershowers may occur at several places in the sea area off the coast extending from Colombo to Hambantota via Galle during the evening or night.

Wind speed will be 25-35 kmph in the sea areas around the island.

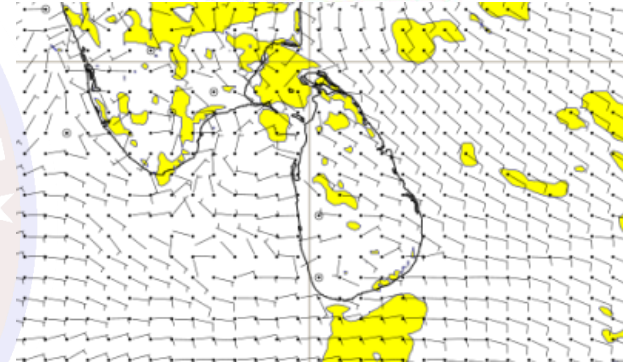
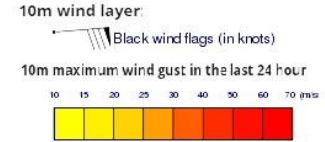
Wind and Rainfall Forecast (Total precipitation for 24 hrs)



Significant wave height (in meters)



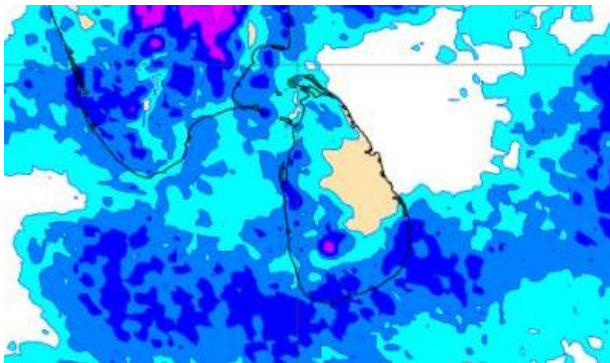
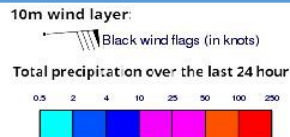
Wind Gust (m/s)



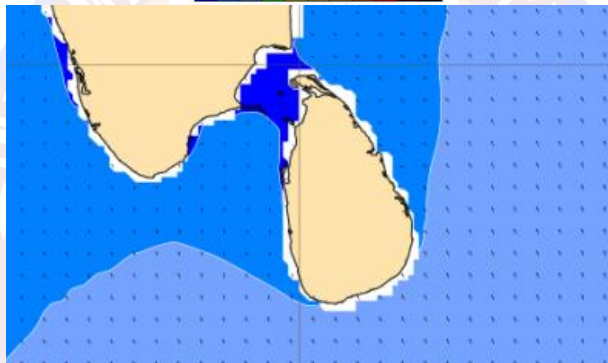
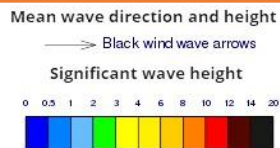
Showers or thundershowers will occur at a few places in the sea area around the island.

Wind speed will be 25-35 kmph in the sea areas around the island.

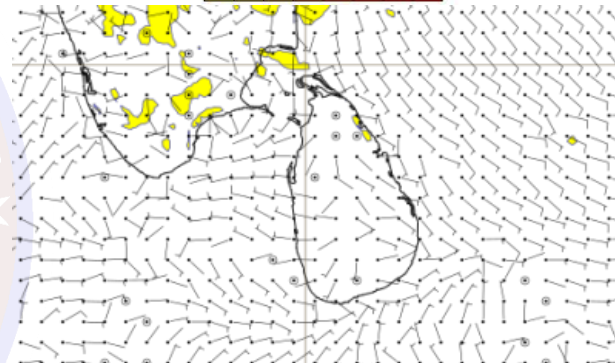
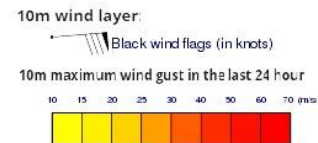
Wind and Rainfall Forecast (Total precipitation for 24 hrs)



Significant wave height (in meters)



Wind Gust (m/s)



Showers or thundershowers will occur at a few places in the sea area around the island.

Wind speed will be 25-35 kmph in the sea areas around the island.