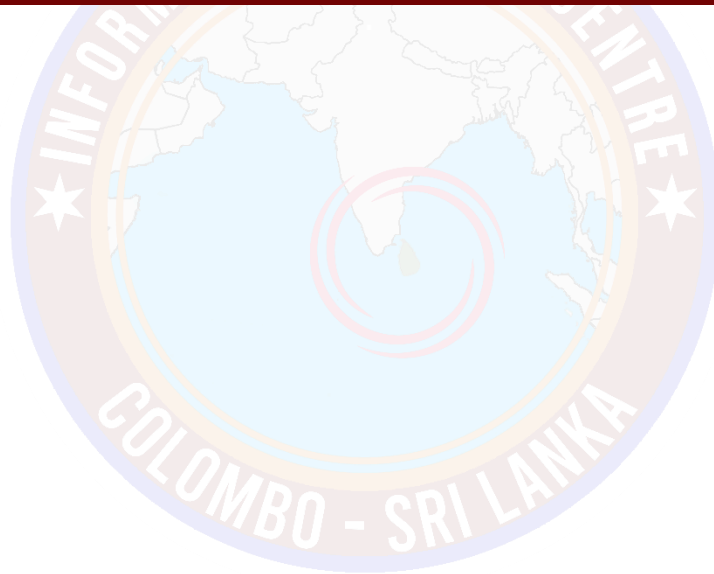


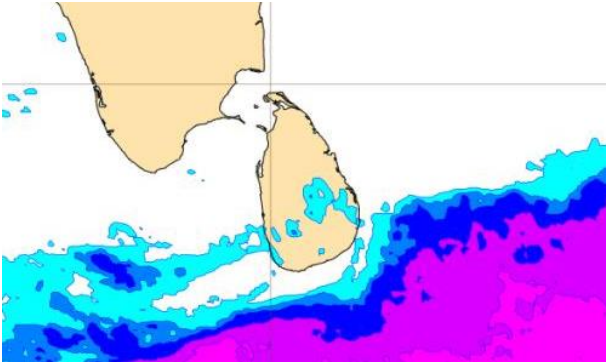
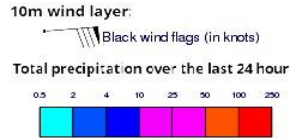
INFORMATION FUSION CENTRE COLOMBO

8 DAY FORECAST FOR COASTAL AREAS AROUND SRI LANKA

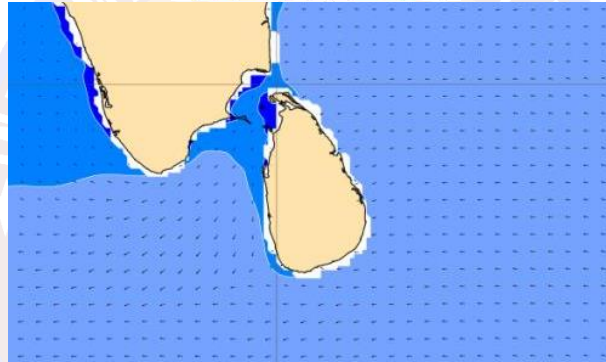
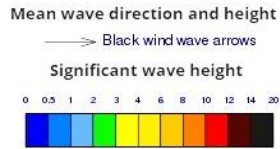
Issued at 10.00 p.m. on 02nd March 2023
Marine Weather Division, National Meteorological Centre, Department of
Meteorology.



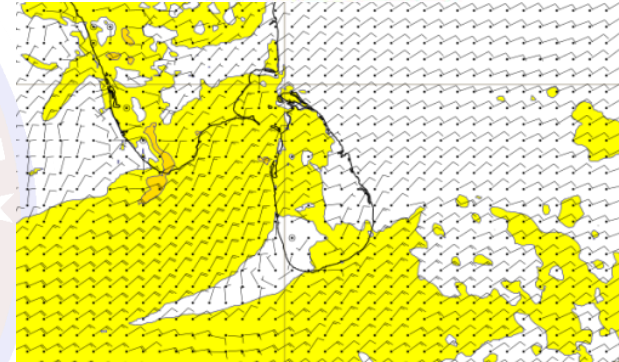
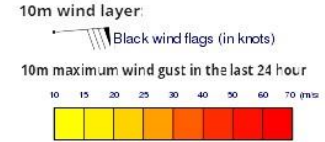
Wind and Rainfall Forecast (Total precipitation for 24 hrs)



Significant wave height (in meters)



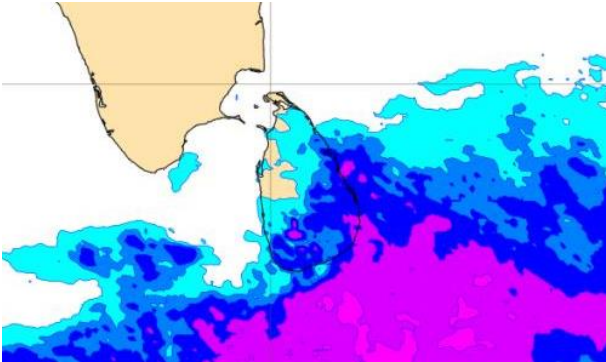
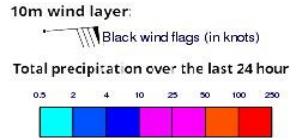
Wind Gust (m/s)



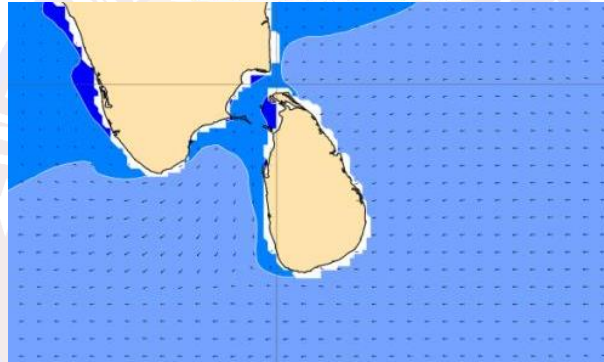
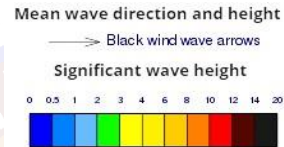
Showers or thundershowers will occur at a few places in the sea area off the coast extending from Hambantota to Batticaloa via Pottuvil. Showers or thundershowers may occur at several places in the sea area off the coast extending from Colombo to Matara via Galle during the evening or night.

Wind speed will be 25-35 kmph in the sea areas around the island. The sea areas off the coast extending from Kankasanturai to Colombo via Puttalam and from Galle to Pottuvil via Hambantota can be fairly rough at times as the wind speed can increase up to 40-50 kmph at times.

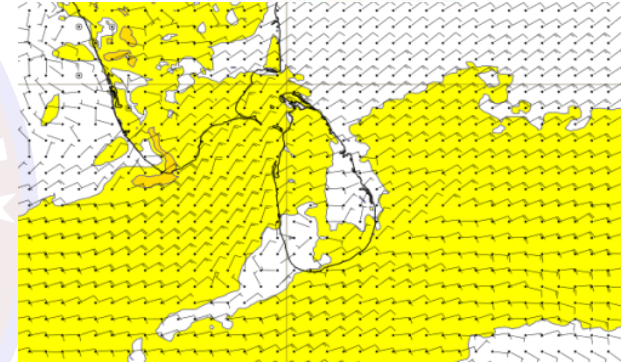
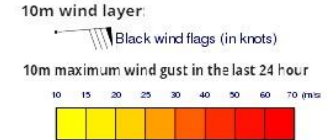
Wind and Rainfall Forecast (Total precipitation for 24 hrs)



Significant wave height (in meters)



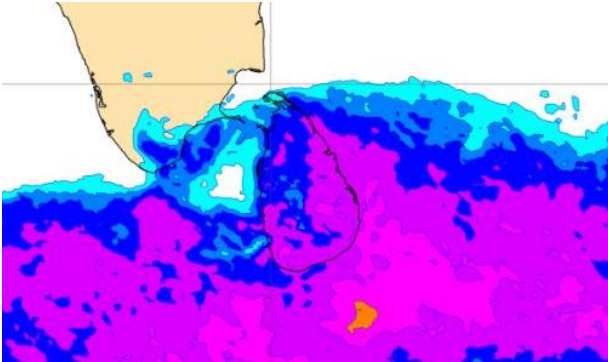
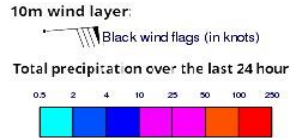
Wind Gust (m/s)



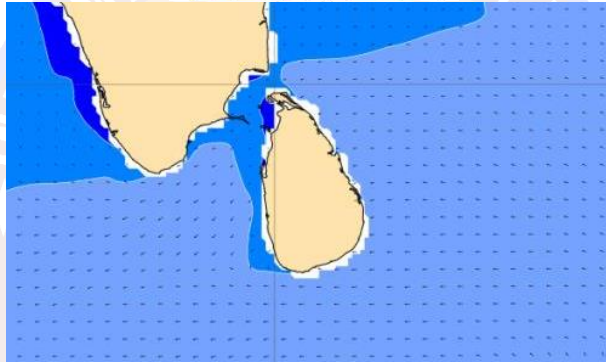
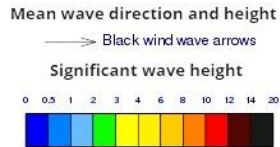
Kankasanturai via Batticaloa and Trincomalee. Showers or thundershowers may occur at several places over the sea areas off the coast extending from Colombo to Hambantota via Galle during the evening or night.

Wind speed will be 25-35 kmph in the sea areas around the island. The sea areas off the coast extending from Kankasanturai to Colombo via Puttalam and from Galle to Pottuvil via Hambantota can be fairly rough at times as the wind speed can increase up to 40-50 kmph at times.

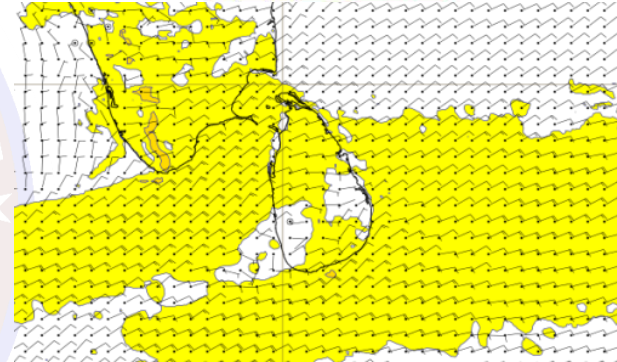
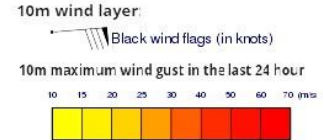
Wind and Rainfall Forecast (Total precipitation for 24 hrs)



Significant wave height (in meters)



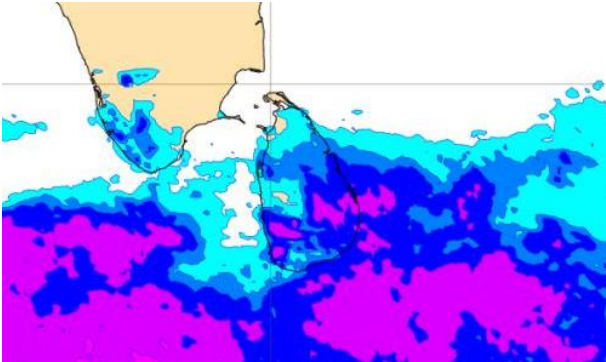
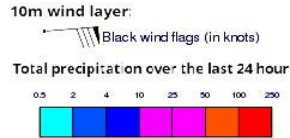
Wind Gust (m/s)



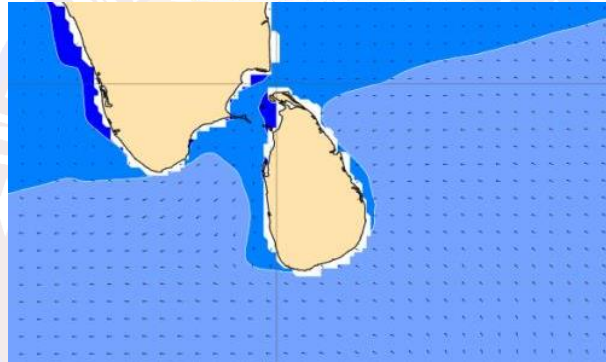
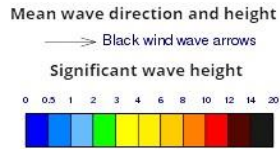
Kankasanturai via Batticaloa and Trincomalee. Showers or thundershowers may occur at several places over the sea areas off the coast extending from Colombo to Hambantota via Galle during the evening or night.

Wind speed will be 25-35 kmph in the sea areas around the island. The sea areas off the coast extending from Kankasanturai to Colombo via Puttalam and from Galle to Pottuvil via Hambantota can be fairly rough at times as the wind speed can increase up to 40-50 kmph at times.

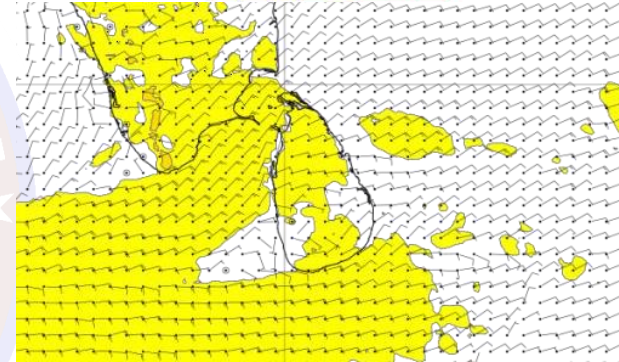
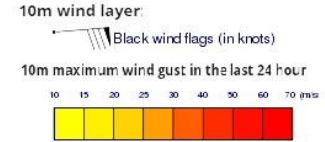
Wind and Rainfall Forecast (Total precipitation for 24 hrs)



Significant wave height (in meters)



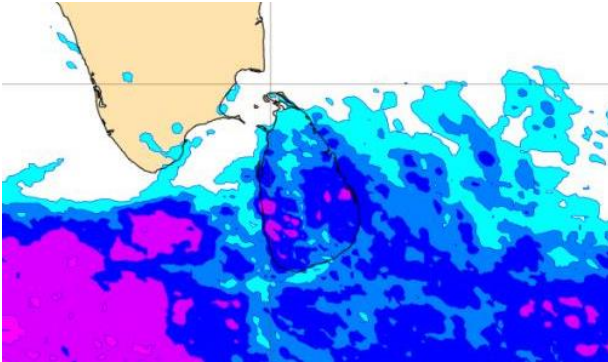
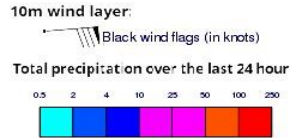
Wind Gust (m/s)



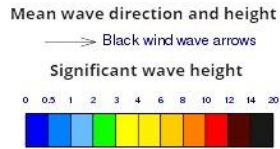
Showers will occur at several places in the sea areas off the coast extending from Hambantota to Kankasanturai via Batticaloa and Trincomalee. Showers or thundershowers may occur at several places over the sea areas off the coast extending from Colombo to Hambantota via Galle during the evening or night.

Wind speed will be 25-35 kmph in the sea areas around the island. The sea areas off the coast extending from Kankasanturai to Colombo via Puttalam and from Galle to Pottuvil via Hambantota can be fairly rough at times as the wind speed can increase up to 40-50 kmph at times.

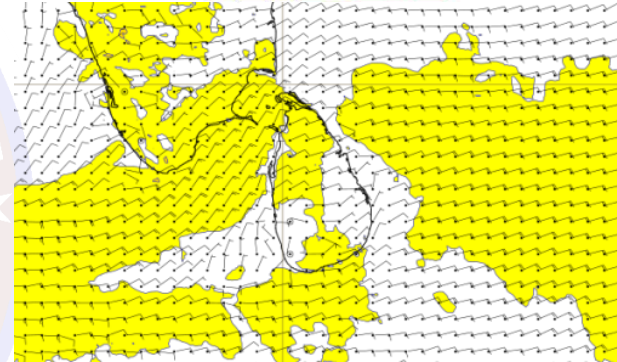
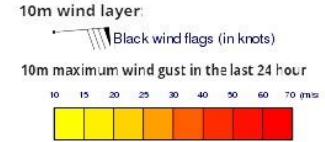
Wind and Rainfall Forecast (Total precipitation for 24 hrs)



Significant wave height (in meters)



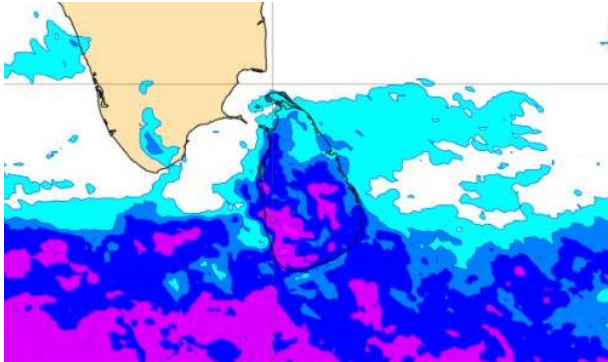
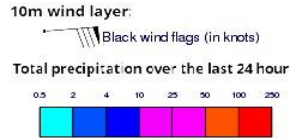
Wind Gust (m/s)



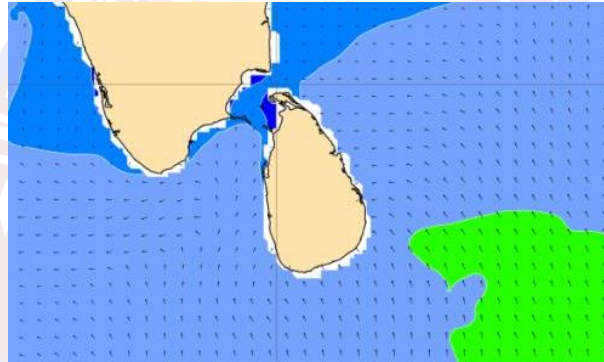
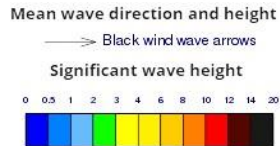
Showers may occur at few places in the sea areas off the coast around the island.

Wind speed will be 25-35 kmph in the sea areas around the island. The sea areas off the coast extending from Kankasanturai to Colombo via Puttalam and from Galle to Hambantota can be fairly rough at times as the wind speed can increase up to 40-45 kmph at times.

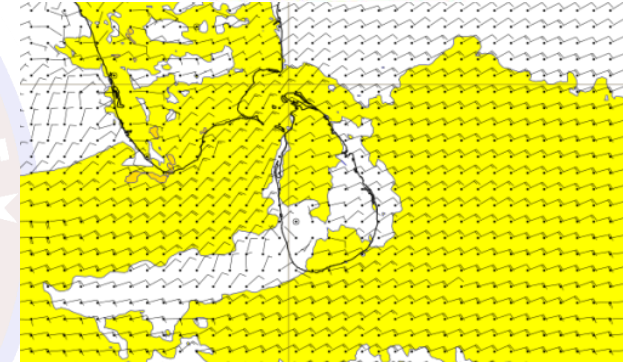
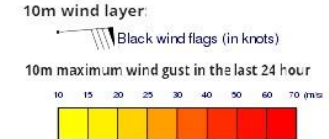
Wind and Rainfall Forecast (Total precipitation for 24 hrs)



Significant wave height (in meters)



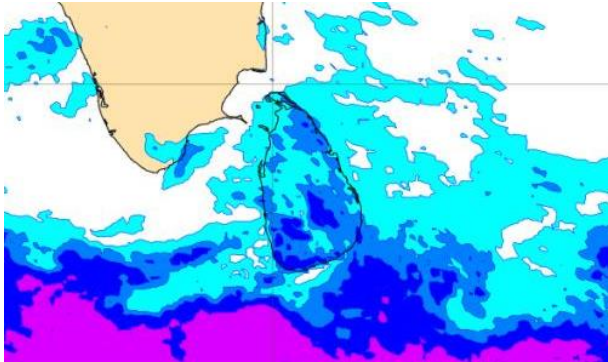
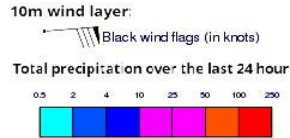
Wind Gust (m/s)



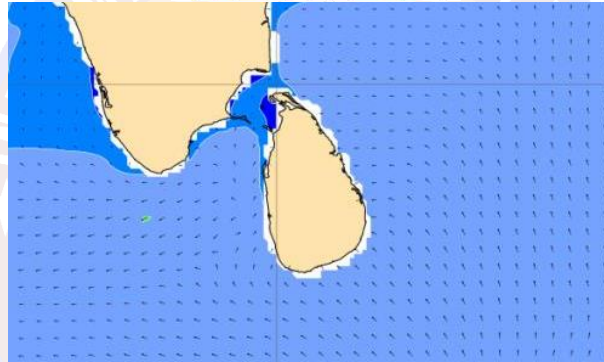
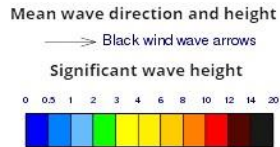
Showers may occur at few places in the sea areas off the coast around the island.

Wind speed will be 25-35 kmph in the sea areas around the island. The sea areas off the coast extending from Kankasanturai to Colombo via Puttalam and from Galle to Hambantota can be fairly rough at times as the wind speed can increase up to 40-45 kmph at times.

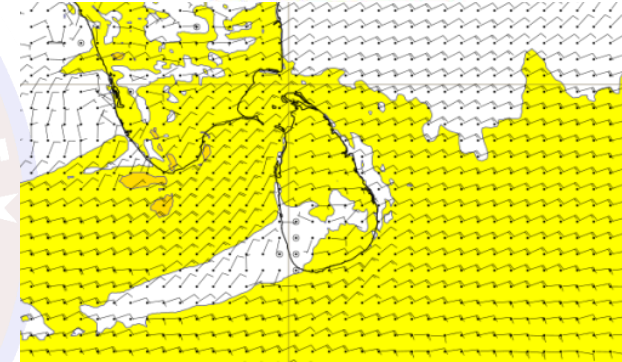
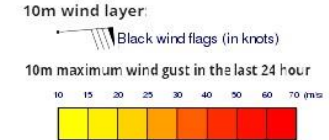
Wind and Rainfall Forecast (Total precipitation for 24 hrs)



Significant wave height (in meters)



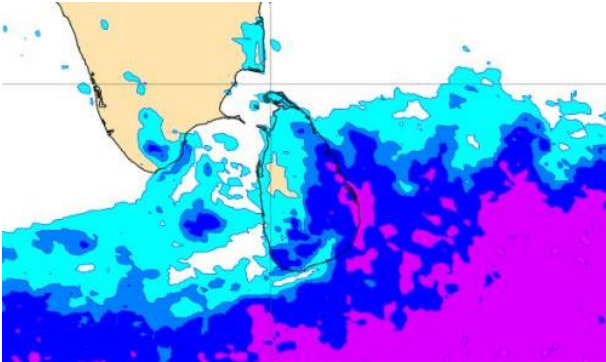
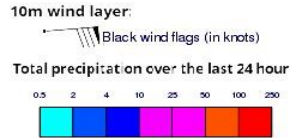
Wind Gust (m/s)



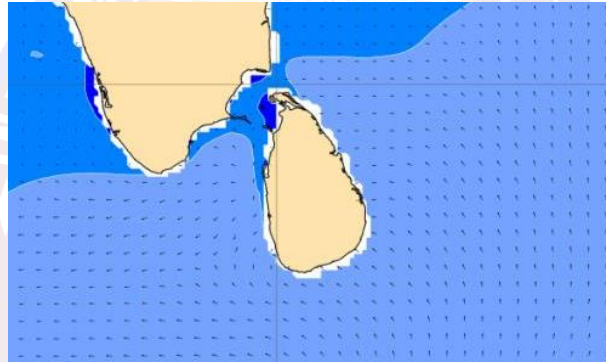
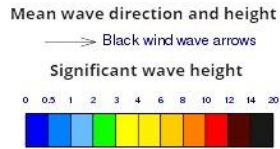
Showers may occur at few places in the sea areas off the coast around the island.

Wind speed will be 25-35 kmph in the sea areas around the island. The sea areas off the coast extending from Kankasanturai to Colombo via Puttalam and from Galle to Pottuvil via Hambantota can be fairly rough at times as the wind speed can increase up to 40-45 kmph at times.

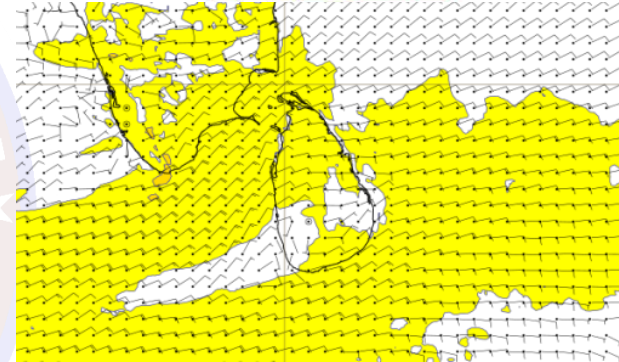
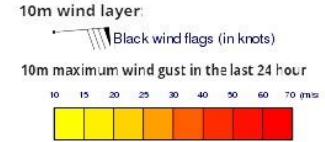
Wind and Rainfall Forecast (Total precipitation for 24 hrs)



Significant wave height (in meters)



Wind Gust (m/s)



Showers will occur at a few places in the sea areas off the coast extending from Hambantota to Kankasanturai via Batticaloa and Trincomalee. Showers or thundershowers may occur at several places in the sea area off the coast extending from Colombo to Matara via Galle during the evening or night.

Wind speed will be 25-35 kmph in the sea areas around the island. The sea areas off the coast extending from Kankasanturai to Colombo via Puttalam and from Galle to Pottuvil via Hambantota can be fairly rough at times as the wind speed can increase up to 40-45 kmph at times.