



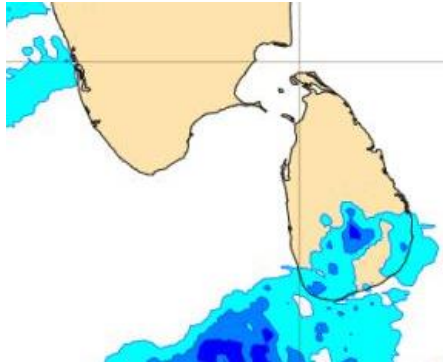
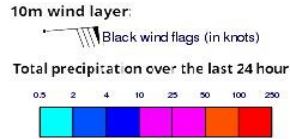
# **INFORMATION FUSION CENTRE COLOMBO**

**8 DAY FORECAST FOR COASTAL AREAS AROUND SRI LANKA**

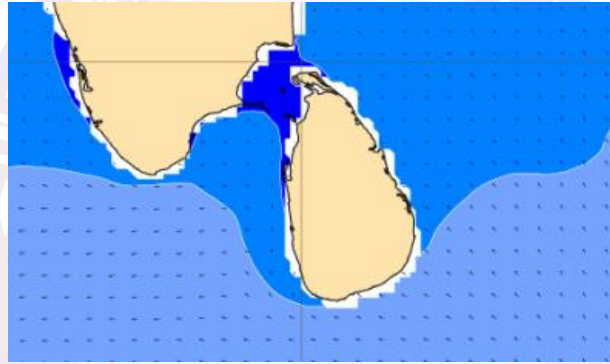
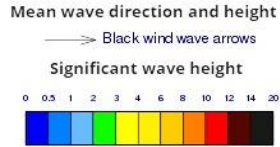
Issued at 10.00 p.m. on 22<sup>nd</sup> February 2023  
Marine Weather Division, National Meteorological Centre, Department of  
Meteorology.



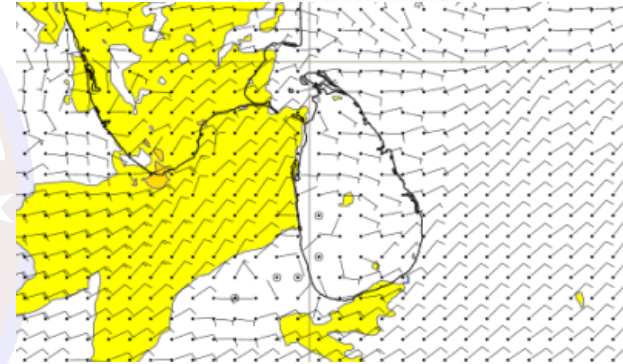
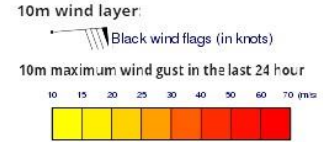
## Wind and Rainfall Forecast (Total precipitation for 24 hrs)



## Significant wave height (in meters)



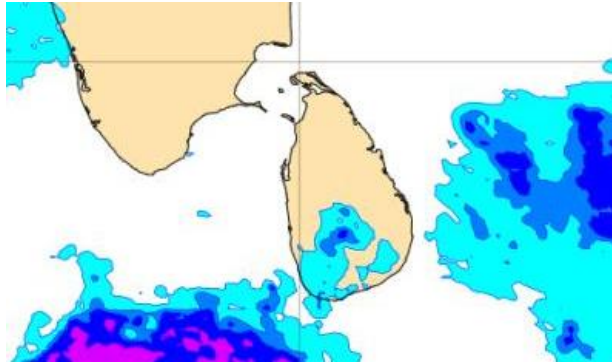
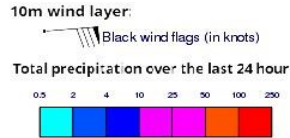
## Wind Gust (m/s)



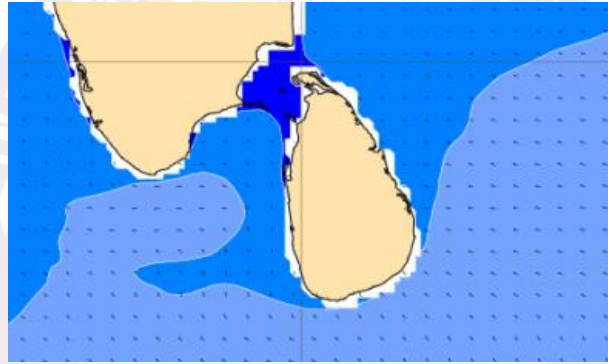
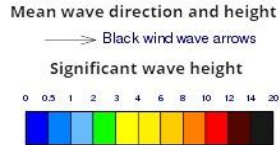
Showers or thundershowers will occur at a few places in the sea area off the coast extending from Hambantota to Batticaloa via Pottuvil. Showers or thundershowers may occur at several places in the sea area off the coast extending from Colombo to Hambantota via Galle during the evening or night.

Wind speed will be 20-30 kmph in the sea areas around the island. The sea areas off the coast extending from Mannar to Colombo via Puttalam and from Galle to Pottuvil via Hambantota can be fairly rough at times as the wind speed can increase up to 40 kmph at times.

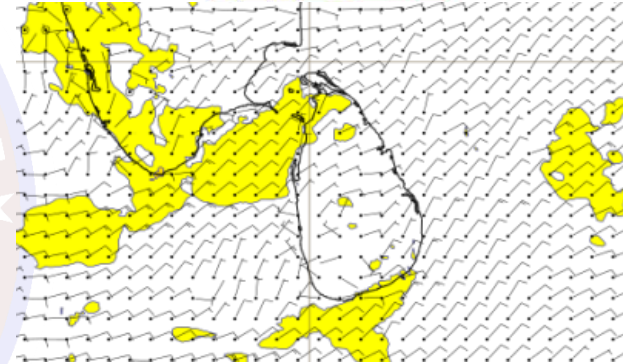
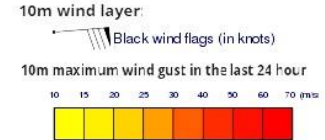
## Wind and Rainfall Forecast (Total precipitation for 24 hrs)



## Significant wave height (in meters)



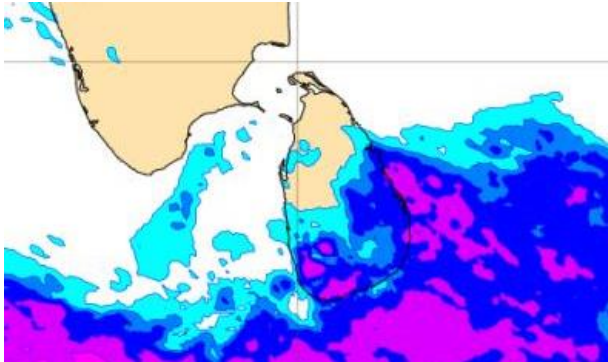
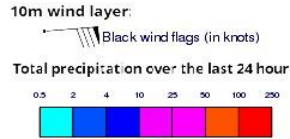
## Wind Gust (m/s)



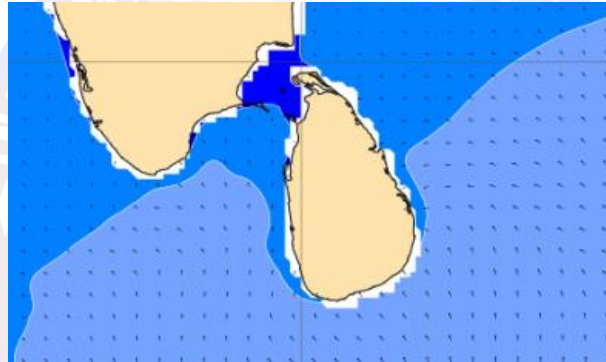
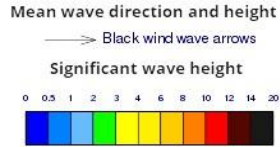
Showers or thundershowers will occur at a few places in the sea area off the coast extending from Hambantota to Batticaloa via Pottuvil. Showers or thundershowers may occur at several places in the sea area off the coast extending from Colombo to Hambantota via Galle during the evening or night.

Wind speed will be 20-30 kmph in the sea areas around the island. The sea areas off the coast extending from Mannar to Colombo via Puttalam and from Galle to Hambantota can be fairly rough at times as the wind speed can increase up to 40 kmph at times.

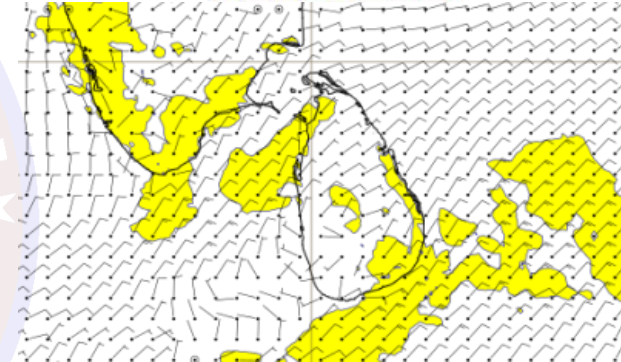
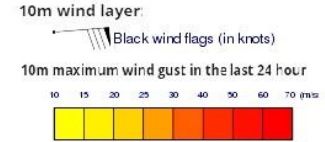
## Wind and Rainfall Forecast (Total precipitation for 24 hrs)



## Significant wave height (in meters)



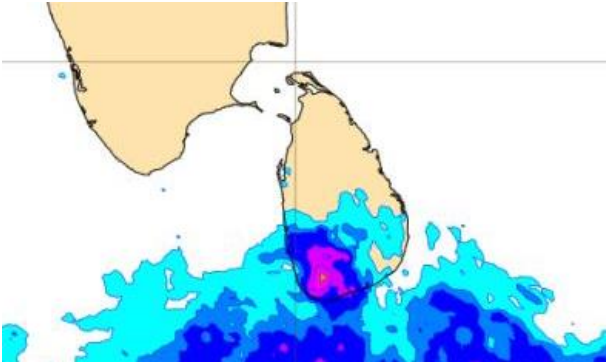
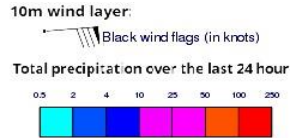
## Wind Gust (m/s)



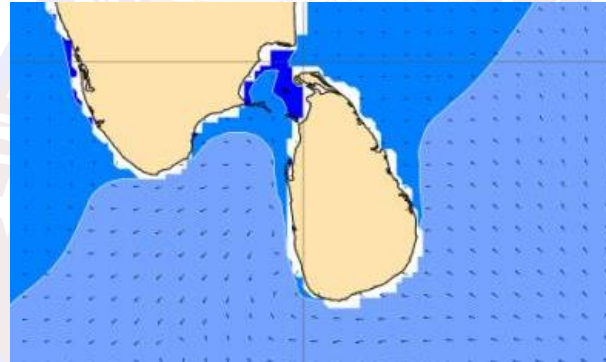
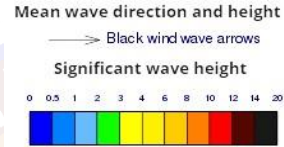
Showers or thundershowers will occur at a few places in the sea area off the coast extending from Pottuvil to Trincomalee via Batticaloa. Showers or thundershowers may occur at a few places in the sea area off the coast extending from Colombo to Hambantota via Galle during the evening or night.

Wind speed will be 20-30 kmph in the sea areas around the island. The sea areas off the coast extending from Mannar to Colombo via Puttalam and from Galle to Pottuvil via Hambantota can be fairly rough at times as the wind speed can increase up to 40 kmph at times..

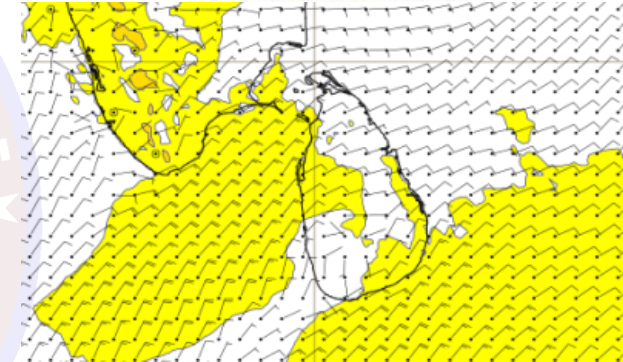
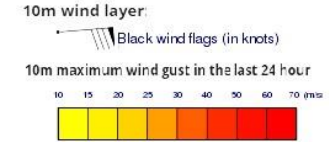
## Wind and Rainfall Forecast (Total precipitation for 24 hrs)



## Significant wave height (in meters)



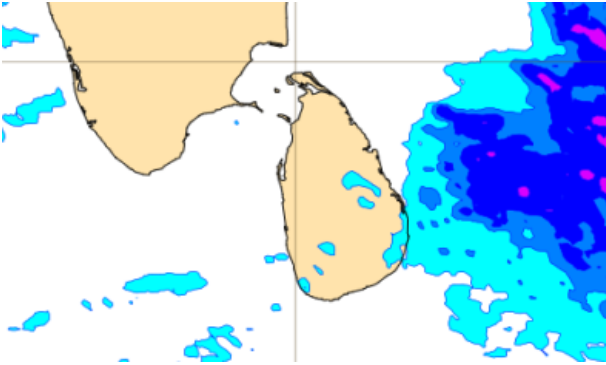
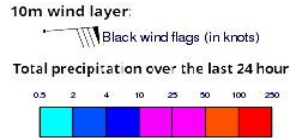
## Wind Gust (m/s)



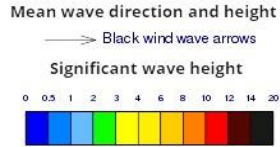
Showers or thundershowers will occur at a few places in the sea areas around the island

Wind speed will be 20-30 kmph in the sea areas around the island. The sea areas off the coast extending from Mannar to Colombo via Puttalam and from Galle to Pottuvil via Hambantota can be fairly rough at times as the wind speed can increase up to 40 kmph at times.

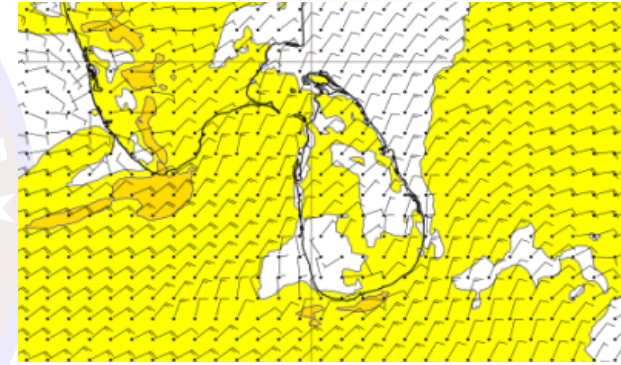
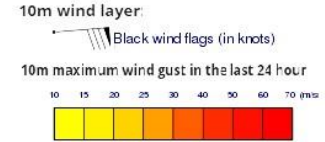
## Wind and Rainfall Forecast (Total precipitation for 24 hrs)



## Significant wave height (in meters)



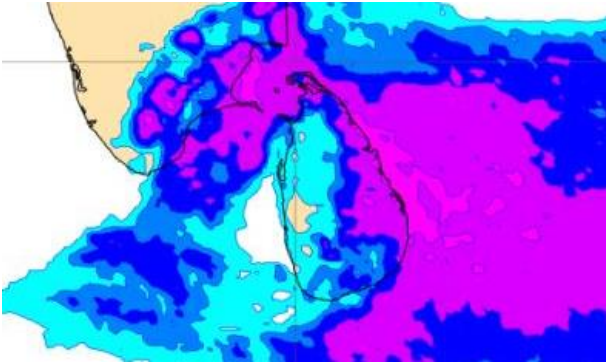
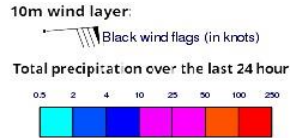
## Wind Gust (m/s)



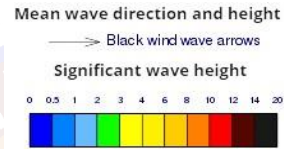
Showers or thundershowers will occur at a few places in the sea area off the coast extending from Pottuvil to Trincomalee via Batticaloa. Showers or thundershowers may occur at several places in the sea area off the coast extending from Colombo to Hambantota via Galle during the evening or night.

Wind speed will be 25-35 kmph in the sea areas around the island. The sea areas off the coast extending from Kankasanturai to Colombo via Puttalam and from Galle to Pottuvil via Hambantota can be rough at times as the wind speed can increase up to 45-50 kmph at times.

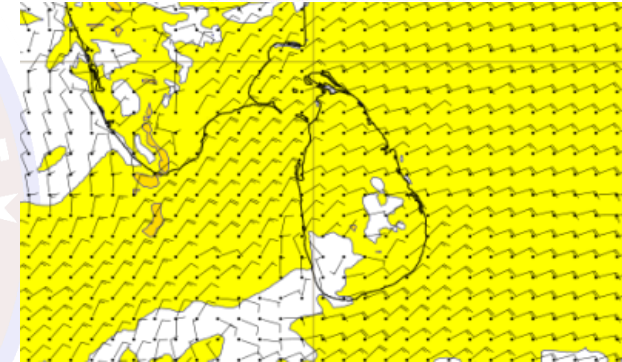
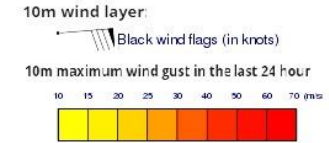
## Wind and Rainfall Forecast (Total precipitation for 24 hrs)



## Significant wave height (in meters)



## Wind Gust (m/s)

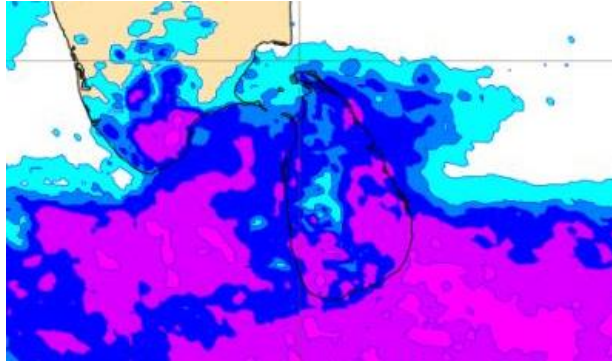
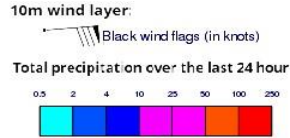


Showers or thundershowers will occur at a few places in the sea area off the coast extending from Hambantota to Mannar via Batticaloa, Trincomalee and Kankasanturai. Showers or thundershowers may occur at a few places in the sea area off the coast extending from Colombo to Hambantota via Galle during the evening or night.

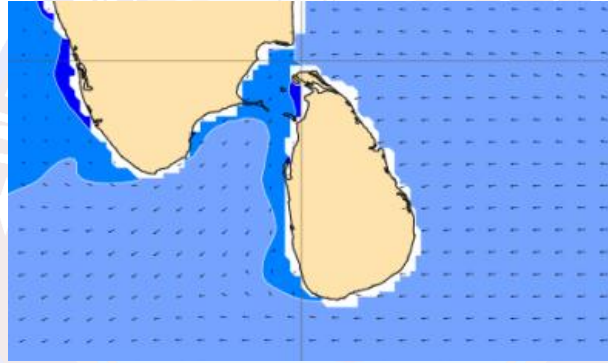
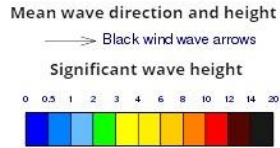
Wind speed will be 25-35 kmph in the sea areas around the island. Other sea areas, except for the sea areas extending from Colombo to Galle, can be fairly rough at times as the wind speed can increase up to 45-50 kmph at times.



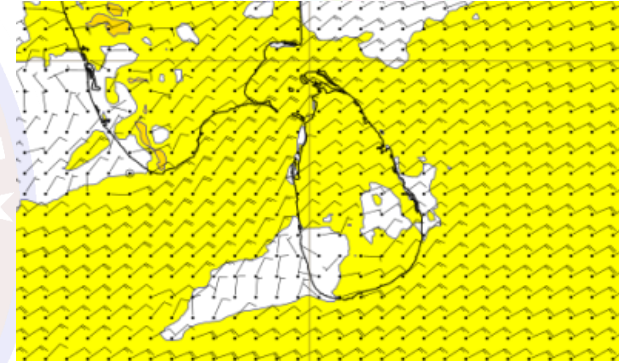
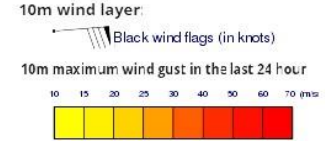
## Wind and Rainfall Forecast (Total precipitation for 24 hrs)



## Significant wave height (in meters)



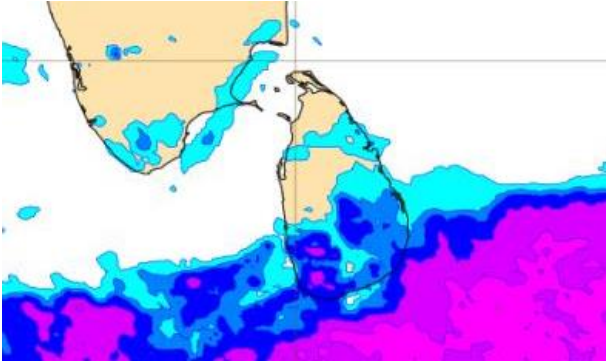
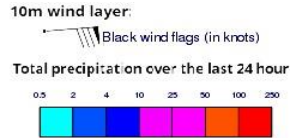
## Wind Gust (m/s)



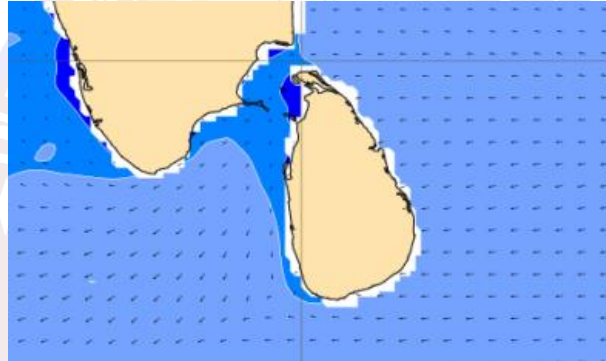
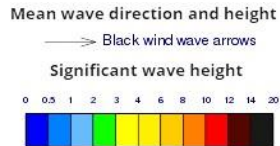
Showers or thundershowers will occur at a few places in the sea areas around the island

Wind speed will be 25-35 kmph in the sea areas around the island. Other sea areas, except for the sea areas extending from Colombo to Galle, can be fairly rough at times as the wind speed can increase up to 45-50 kmph at times.

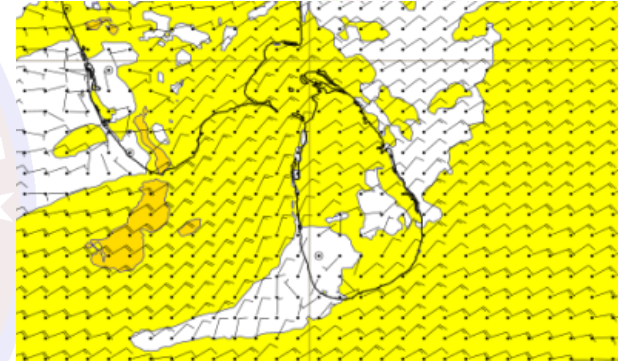
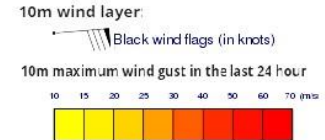
## Wind and Rainfall Forecast (Total precipitation for 24 hrs)



## Significant wave height (in meters)



## Wind Gust (m/s)



Showers or thundershowers will occur at a few places in the sea areas around the island

Wind speed will be 25-35 kmph in the sea areas around the island. Other sea areas, except for the sea areas extending from Colombo to Galle, can be fairly rough at times as the wind speed can increase up to 45-50 kmph at times.