



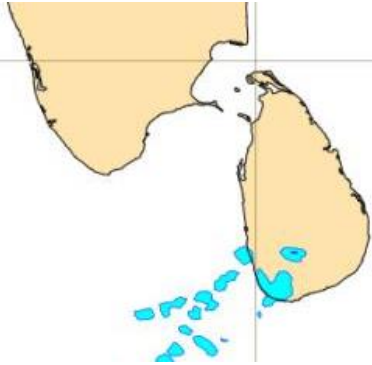
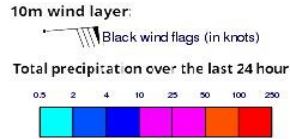
INFORMATION FUSION CENTRE COLOMBO

8 DAY FORECAST FOR COASTAL AREAS AROUND SRI LANKA

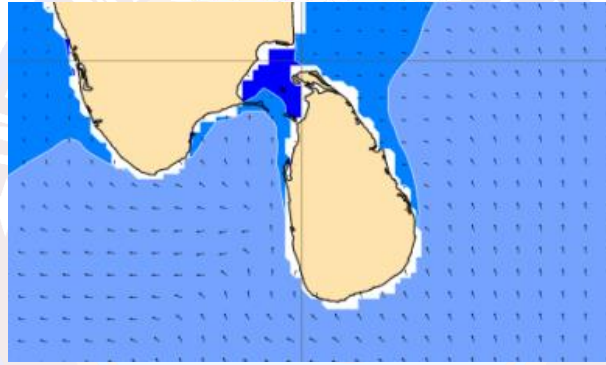
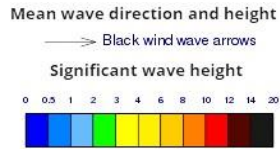
Issued at 10.00 p.m. on 14th February 2023
Marine Weather Division, National Meteorological Centre, Department of
Meteorology.



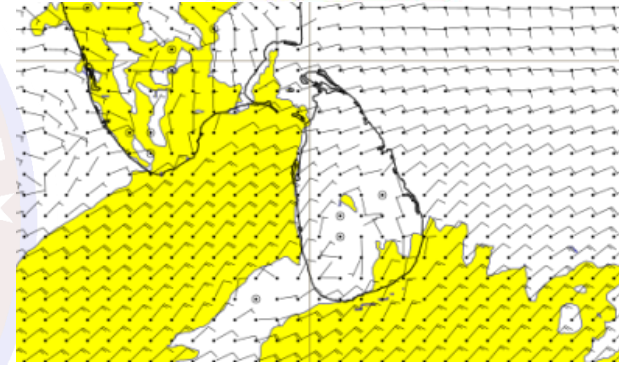
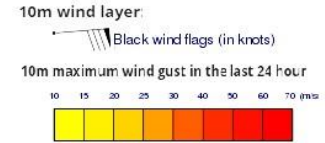
Wind and Rainfall Forecast (Total precipitation for 24 hrs)



Significant wave height (in meters)



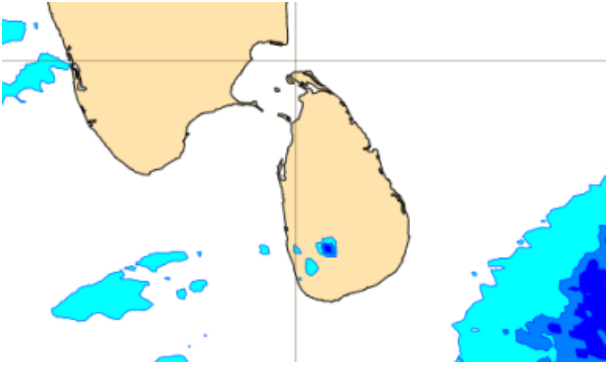
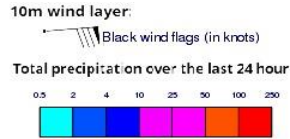
Wind Gust (m/s)



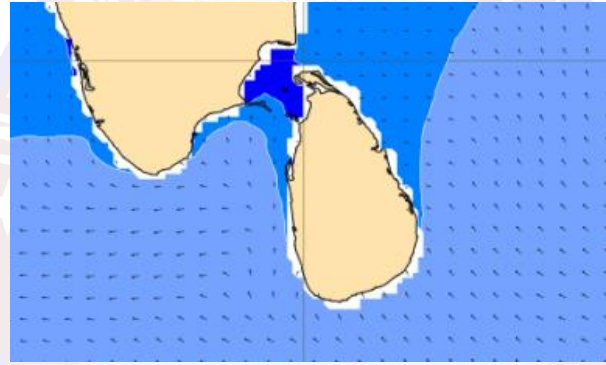
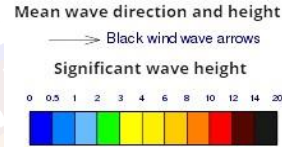
Mainly fair weather will prevail over sea areas around the island.

Wind speed will be 20-30 kmph in the sea areas around the island. The sea areas off the coast extending from Kankasanturai to Colombo via Puttalam and from Galle to Pottuvil via Hambantota can be fairly rough at times as the wind speed can be 40-45 kmph at times.

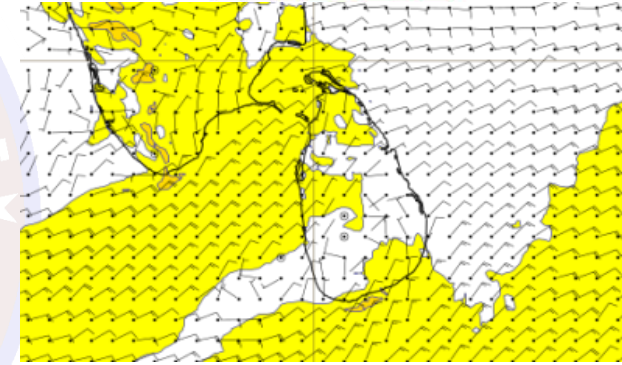
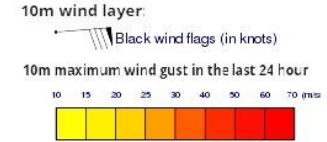
Wind and Rainfall Forecast (Total precipitation for 24 hrs)



Significant wave height (in meters)



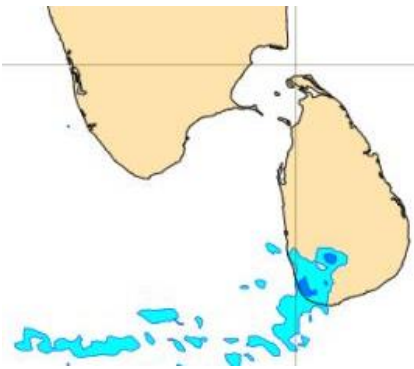
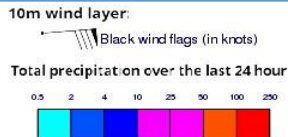
Wind Gust (m/s)



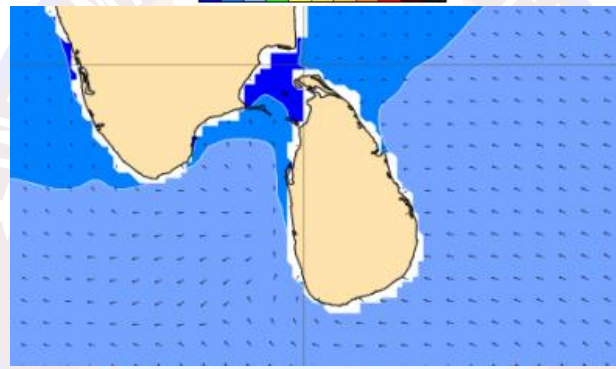
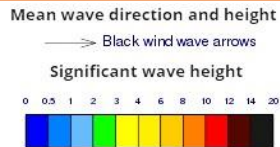
Mainly fair weather will prevail over sea areas around the island.

Wind speed will be 20-30 kmph in the sea areas around the island. The sea areas off the coast extending from Kankasanturai to Colombo via Puttalam and from Galle to Pottuvil via Hambantota can be fairly rough at times as the wind speed can be 40-45 kmph at times.

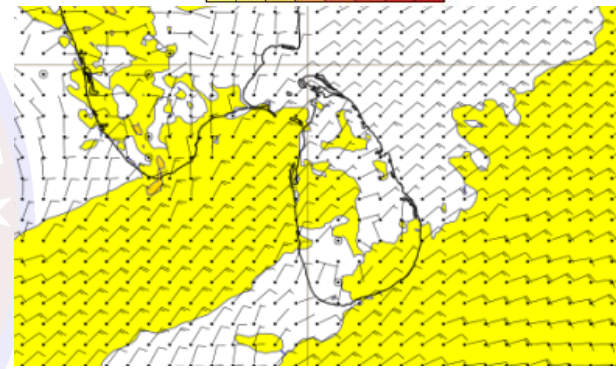
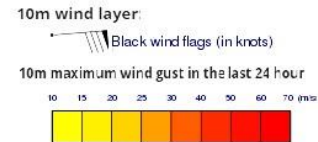
Wind and Rainfall Forecast (Total precipitation for 24 hrs)



Significant wave height (in meters)



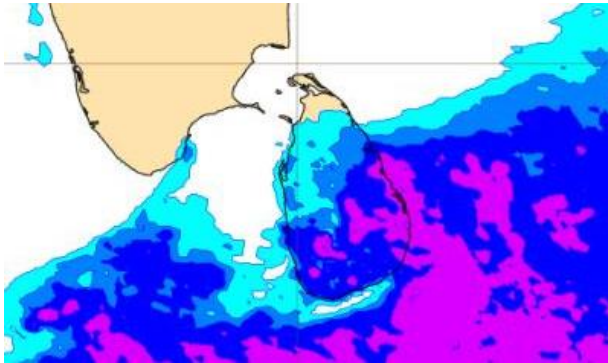
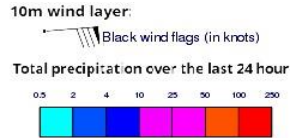
Wind Gust (m/s)



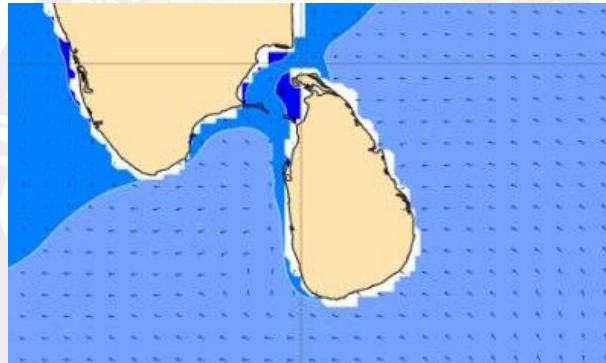
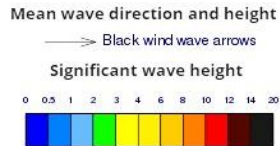
Mainly fair weather will prevail over sea areas around the island.

Wind speed will be 20-30 kmph in the sea areas around the island. The sea areas off the coast extending from Kankasanturai to Colombo via Puttalam and from Galle to Pottuvil via Hambantota can be fairly rough at times as the wind speed can be 40-45 kmph at times.

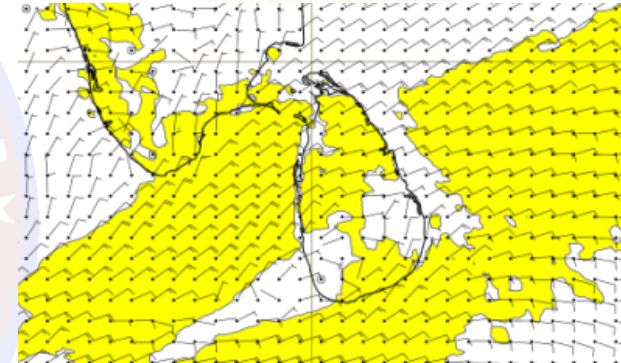
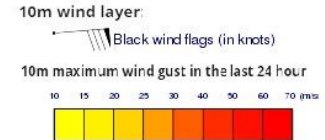
Wind and Rainfall Forecast (Total precipitation for 24 hrs)



Significant wave height (in meters)



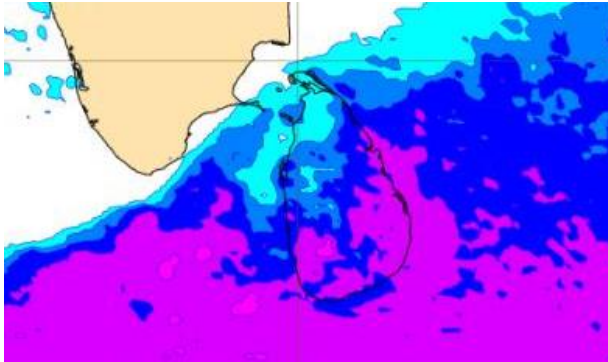
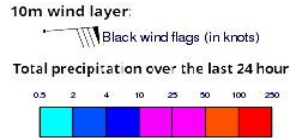
Wind Gust (m/s)



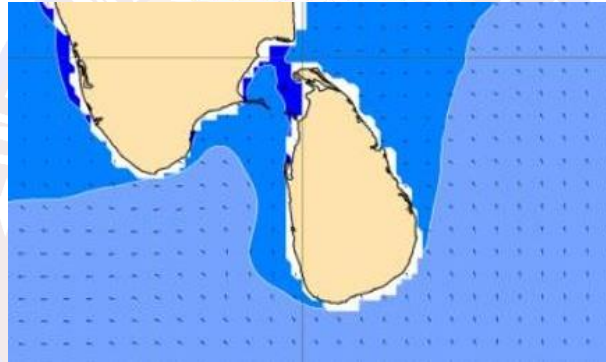
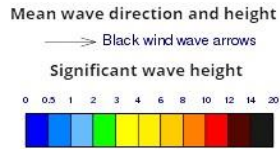
Showers or thundershowers will occur at several places in sea areas off the coast extending from Pottuvil to Mullaitivu via Batticaloa and Trincomalee.

Wind speed will be 20-30 kmph in the sea areas around the island. The sea areas off the coast extending from Kankasanturai to Colombo via Puttalam and from Galle to Pottuvil via Hambantota can be fairly rough at times as the wind speed can be 40-45 kmph at times.

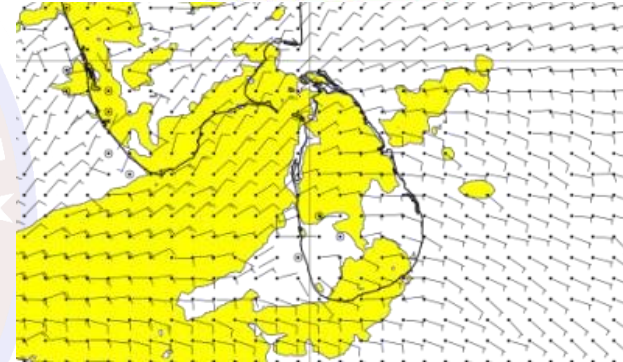
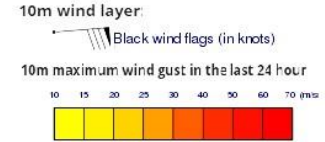
Wind and Rainfall Forecast (Total precipitation for 24 hrs)



Significant wave height (in meters)



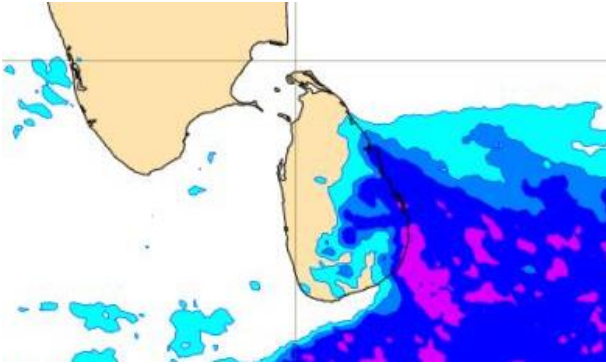
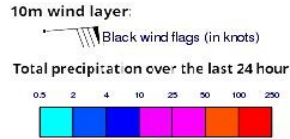
Wind Gust (m/s)



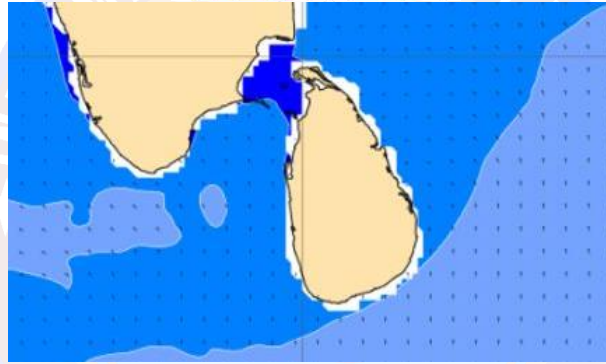
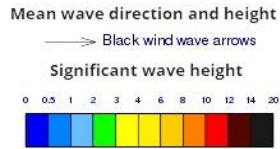
Showers or thundershowers will occur at times in sea areas off the coast extending from Pottuvil to Mullaitivu via Batticaloa and Trincomalee.

Wind speed will be 20-30 kmph in the sea areas around the island. The sea areas off the coast extending from Kankasanturai to Colombo via Puttalam and from Galle to Pottuvil via Hambantota can be fairly rough at times as the wind speed can be 40-45 kmph at times.

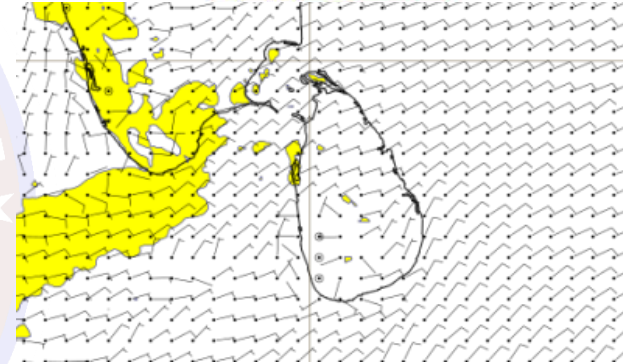
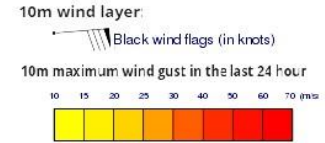
Wind and Rainfall Forecast (Total precipitation for 24 hrs)



Significant wave height (in meters)



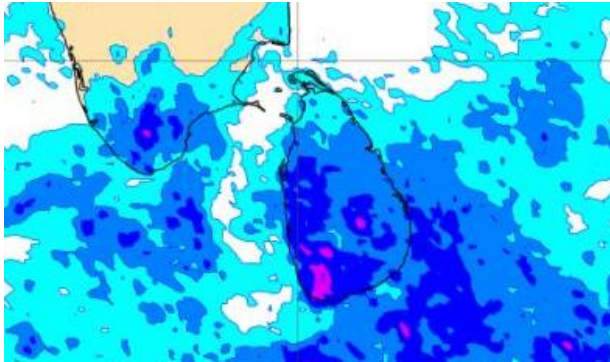
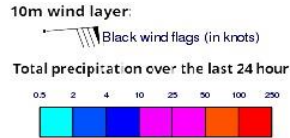
Wind Gust (m/s)



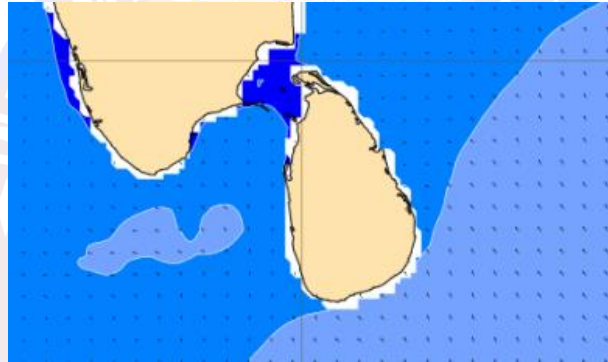
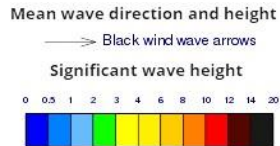
Showers or thundershowers will occur at several places in sea areas off the coast extending from Pottuvil to Mullaitivu via Batticaloa and Trincomalee.

Wind speed will be 20-30 kmph in the sea areas around the island.

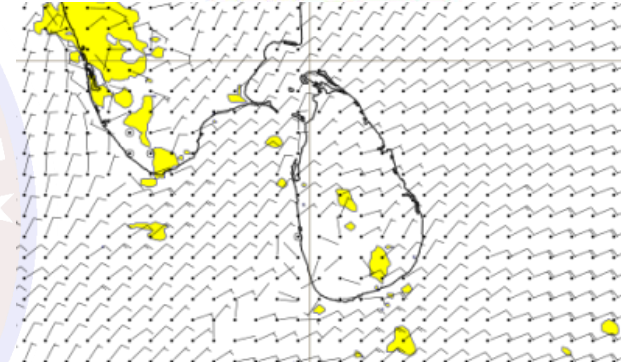
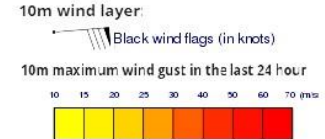
Wind and Rainfall Forecast (Total precipitation for 24 hrs)



Significant wave height (in meters)



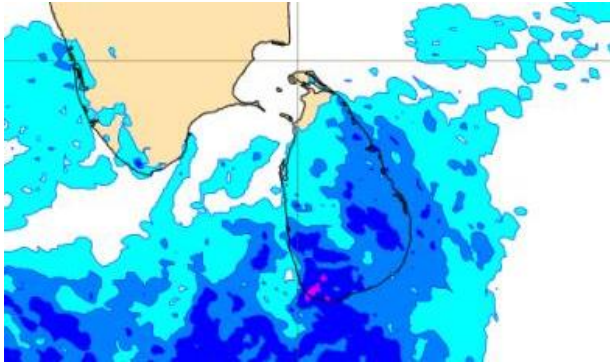
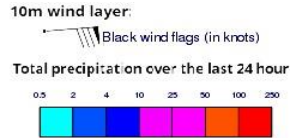
Wind Gust (m/s)



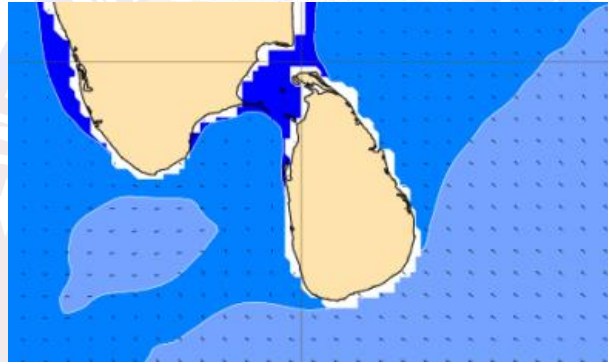
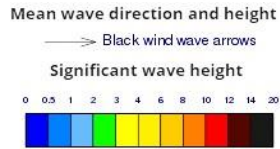
Showers or thundershowers will occur at several places in the sea areas around the island.

Wind speed will be 20-30 kmph in the sea areas around the island.

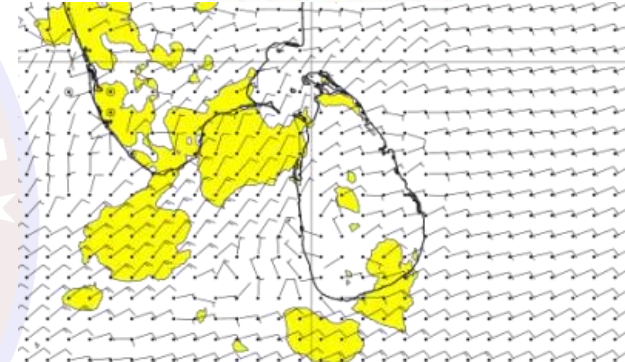
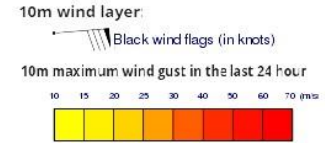
Wind and Rainfall Forecast (Total precipitation for 24 hrs)



Significant wave height (in meters)



Wind Gust (m/s)



Showers or thundershowers will occur at several places in the sea areas around the island.

Wind speed will be 20-30 kmph in the sea areas around the island.