



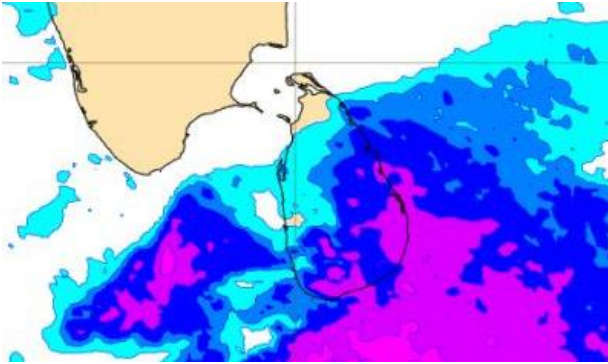
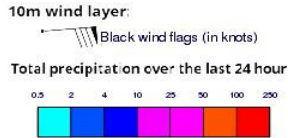
INFORMATION FUSION CENTRE COLOMBO

8 DAY FORECAST FOR COASTAL AREAS AROUND SRI LANKA

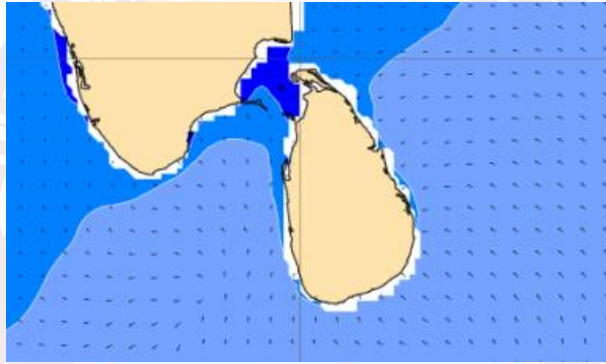
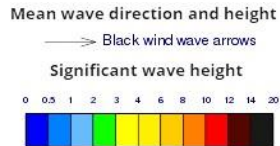
Issued at 10.00 p.m. on 06th February 2023
Marine Weather Division, National Meteorological Centre, Department of
Meteorology.



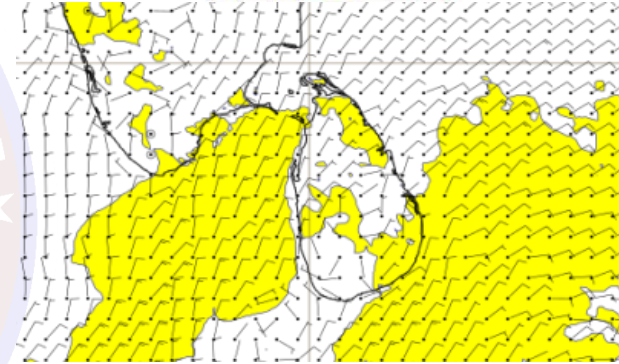
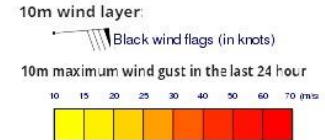
Wind and Rainfall Forecast (Total precipitation for 24 hrs)



Significant wave height (in meters)



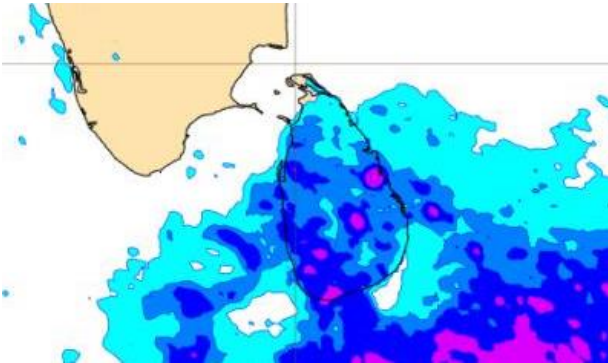
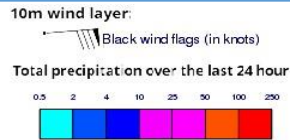
Wind Gust (m/s)



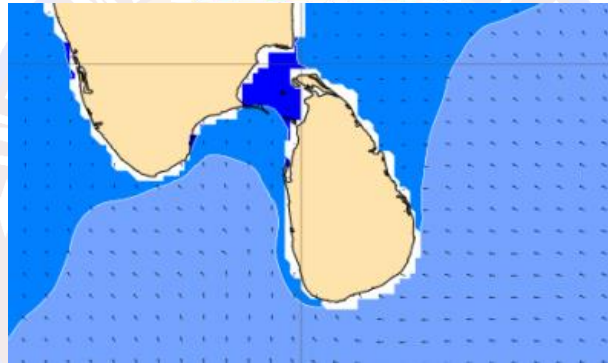
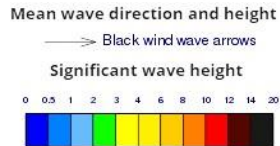
Showers or thundershowers will occur at times in sea areas off the coast extending from Hambantota to Mullaitivu via Pottuvil and Trincomalee. Showers or thundershowers may occur at several places in the other sea areas around the Island in the evening or night.

Wind speed will be 20-30 kmph in the sea areas around the island. The sea areas off the coast extending from Mannar to Colombo via Puttalam and from Hambantota to Pottuvil can be fairly rough at times as the wind speed can be 45 kmph at times.

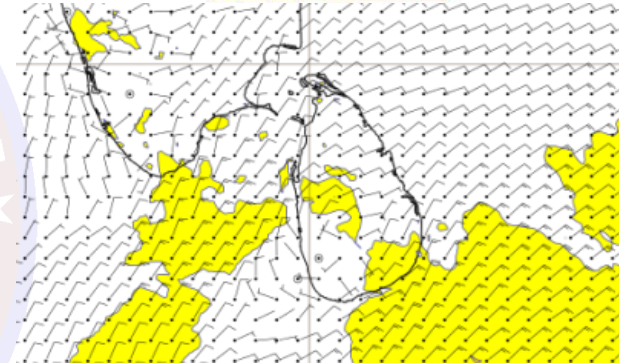
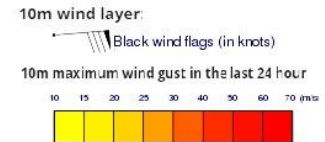
Wind and Rainfall Forecast (Total precipitation for 24 hrs)



Significant wave height (in meters)



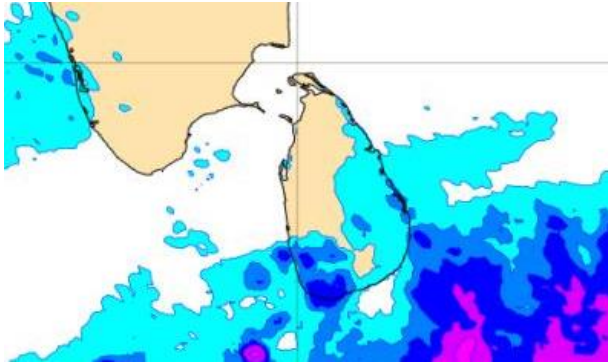
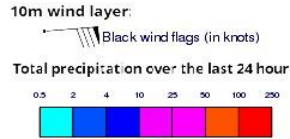
Wind Gust (m/s)



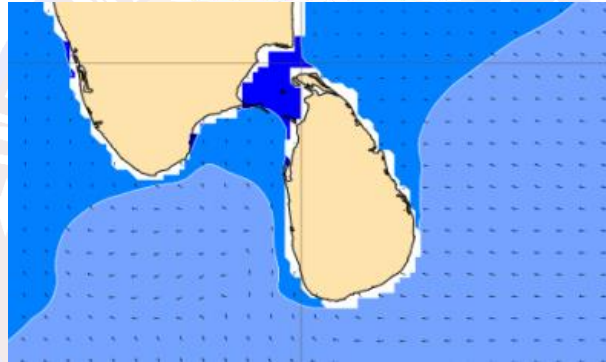
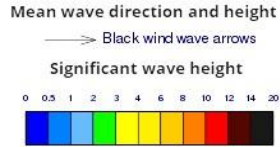
Showers or thundershowers will occur at several places in sea areas off the coast extending from Hambantota to Mullaitivu via Pottuvil and Trincomalee. Showers or thundershowers may occur at several places in the other sea areas around the Island in the evening or night.

Wind speed will be 20-30 kmph in the sea areas around the island. The sea areas off the coast extending from Hambantota to Pottuvil can be fairly rough at times as the wind speed can be 40-45 kmph at times.

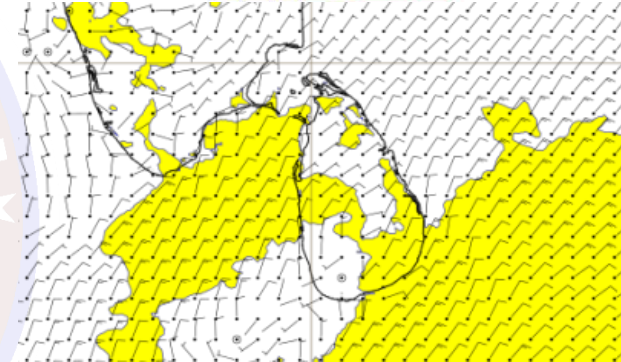
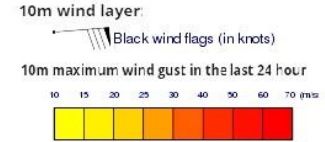
Wind and Rainfall Forecast (Total precipitation for 24 hrs)



Significant wave height (in meters)



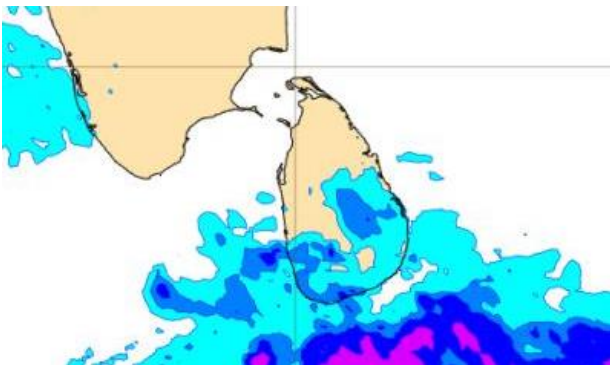
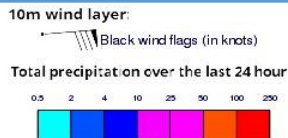
Wind Gust (m/s)



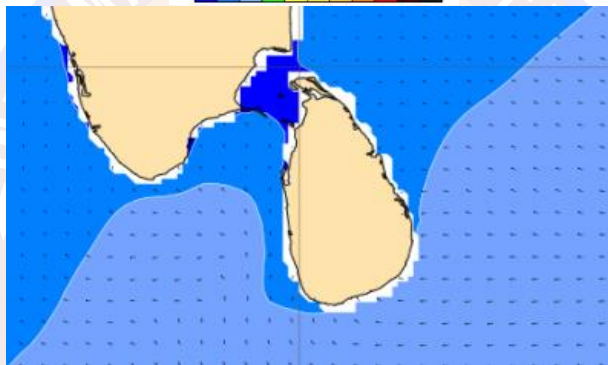
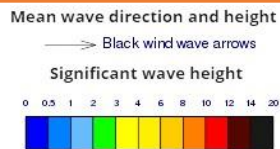
Showers or thundershowers will occur at a few places in sea areas off the coast extending from Hambantota to Trincomalee via Pottuvil.

Wind speed will be 20-30 kmph in the sea areas around the island. The sea areas off the coast extending from Mannar to Colombo via Puttalam and from Hambantota to Pottuvil can be fairly rough at times as the wind speed can be 45 kmph at times.

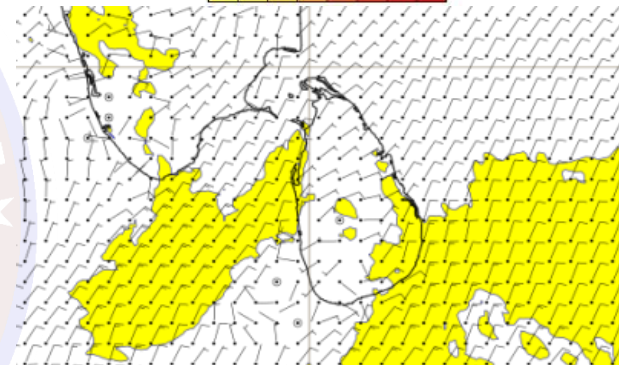
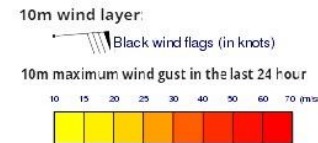
Wind and Rainfall Forecast (Total precipitation for 24 hrs)



Significant wave height (in meters)



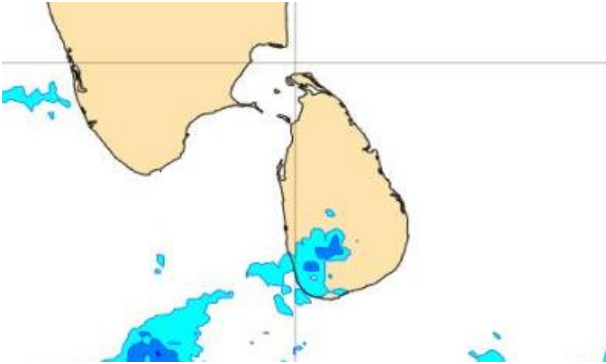
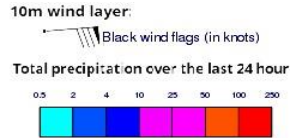
Wind Gust (m/s)



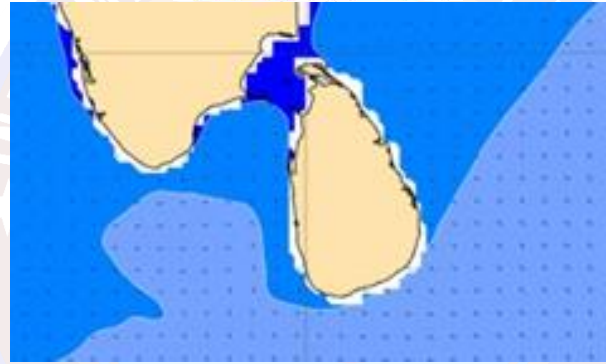
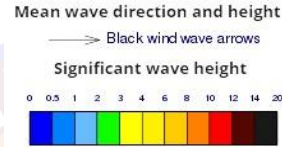
Showers or thundershowers will occur at a few places in sea areas off the coast extending from Pottuvil to Trincomalee via Batticaloa.

Wind speed will be 20-30 kmph in the sea areas around the island. The sea areas off the coast extending from Mannar to Colombo via Puttalam and from Hambantota to Pottuvil can be fairly rough at times as the wind speed can be 45 kmph at times.

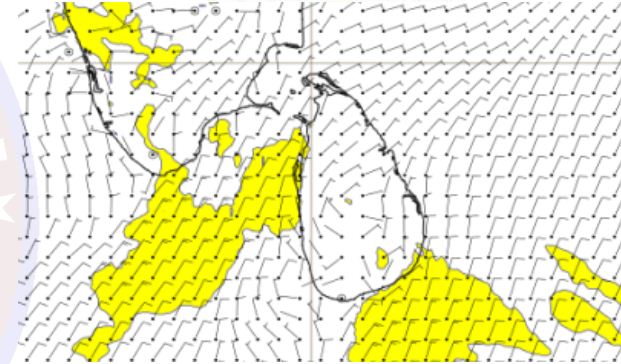
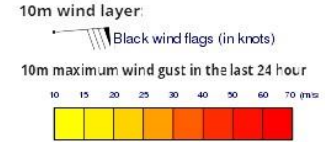
Wind and Rainfall Forecast (Total precipitation for 24 hrs)



Significant wave height (in meters)



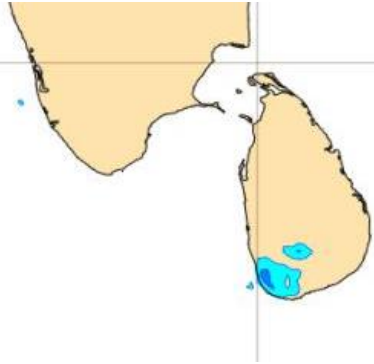
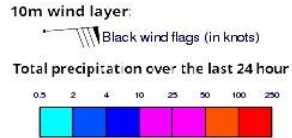
Wind Gust (m/s)



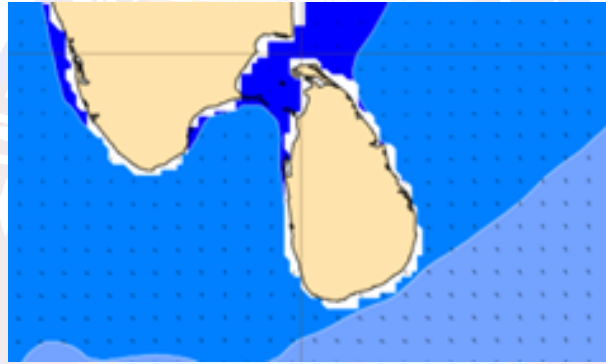
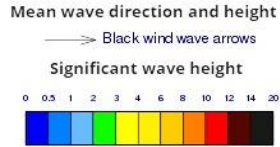
Mainly fair weather will prevail over sea areas around the island.

Wind speed will be 20-30 kmph in the sea areas around the island. The sea areas off the coast extending from Mannar to Colombo via Puttalam and from Hambantota to Pottuvil can be fairly rough at times as the wind speed can be 45 kmph at times.

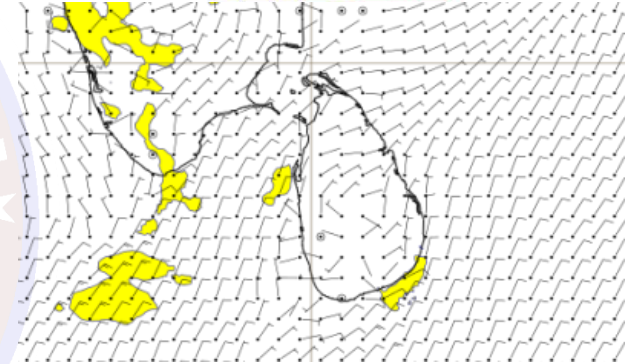
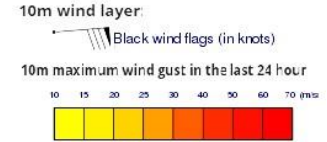
Wind and Rainfall Forecast (Total precipitation for 24 hrs)



Significant wave height (in meters)



Wind Gust (m/s)



Mainly fair weather will prevail over sea areas around the island.

Wind speed will be 20-30 kmph in the sea areas around the island.

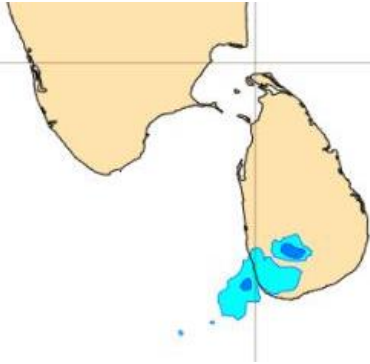
Wind and Rainfall Forecast (Total precipitation for 24 hrs)

10m wind layer:

Black wind flags (in knots)

Total precipitation over the last 24 hour

0.5 2 4 10 25 50 100 200



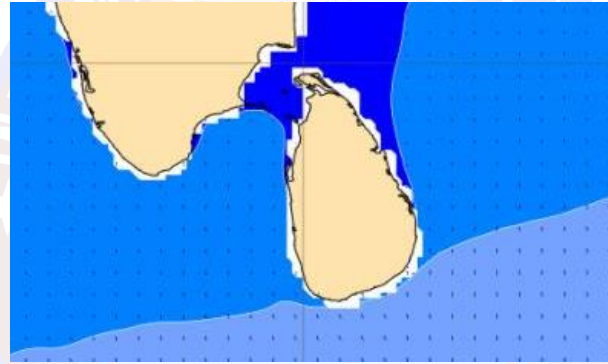
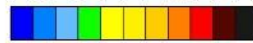
Significant wave height (in meters)

Mean wave direction and height

Black wind wave arrows

Significant wave height

0 0.5 1 2 3 4 6 8 10 12 14 20



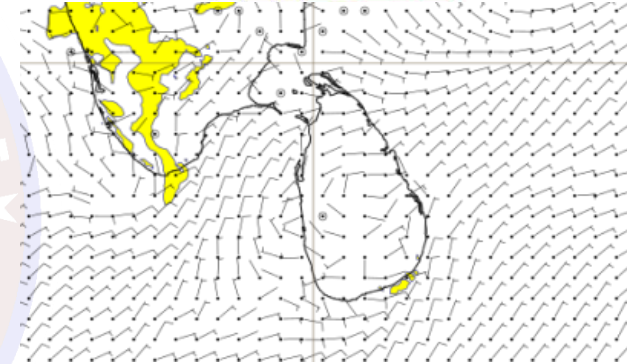
Wind Gust (m/s)

10m wind layer:

Black wind flags (in knots)

10m maximum wind gust in the last 24 hour

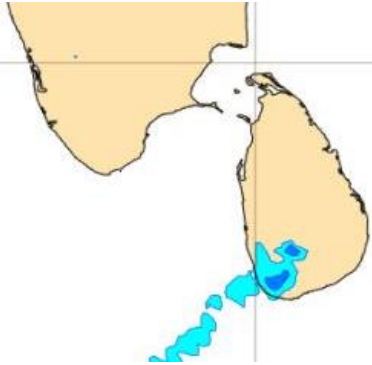
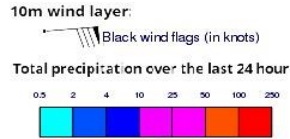
10 15 20 25 30 40 50 60 70 (m/s)



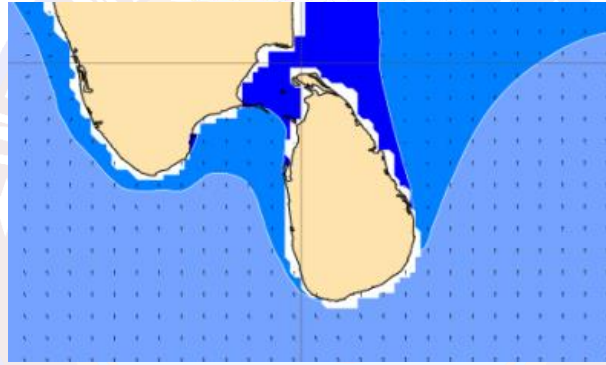
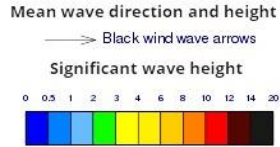
Mainly fair weather will prevail over sea areas around the island.

Wind speed will be 20-30 kmph in the sea areas around the island.

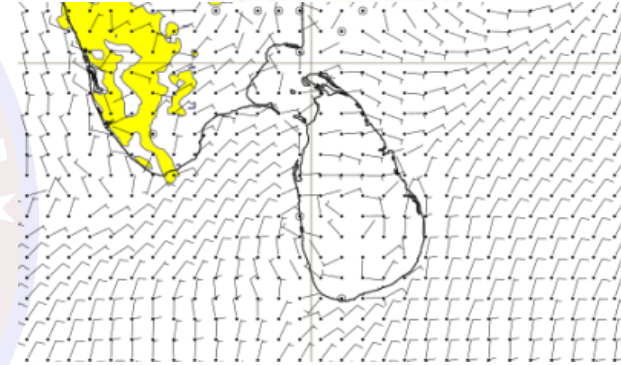
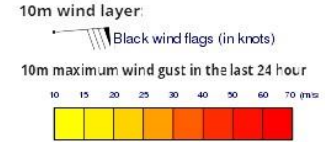
Wind and Rainfall Forecast (Total precipitation for 24 hrs)



Significant wave height (in meters)



Wind Gust (m/s)



Mainly fair weather will prevail over sea areas around the island.

Wind speed will be 20-30 kmph in the sea areas around the island.