



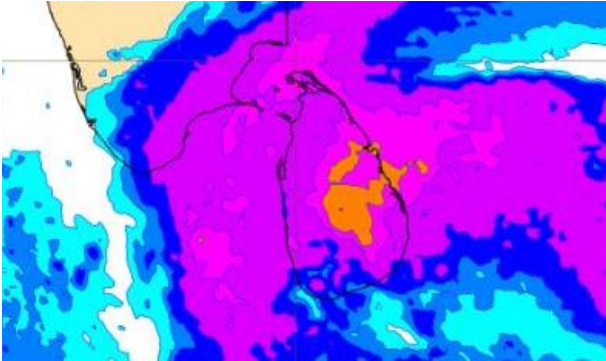
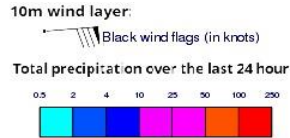
INFORMATION FUSION CENTRE COLOMBO

6 DAY FORECAST FOR COASTAL AREAS AROUND SRI LANKA

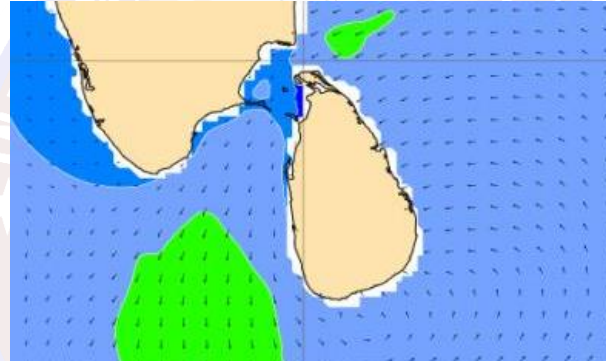
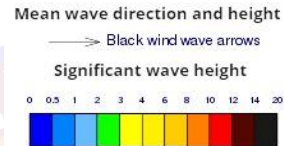
Issued at 10.00 p.m. on 29th January 2023
Marine Weather Division, National Meteorological Centre, Department of
Meteorology.



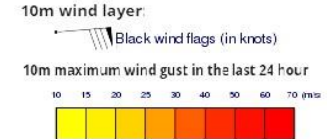
Wind and Rainfall Forecast (Total precipitation for 24 hrs)



Significant wave height (in meters)



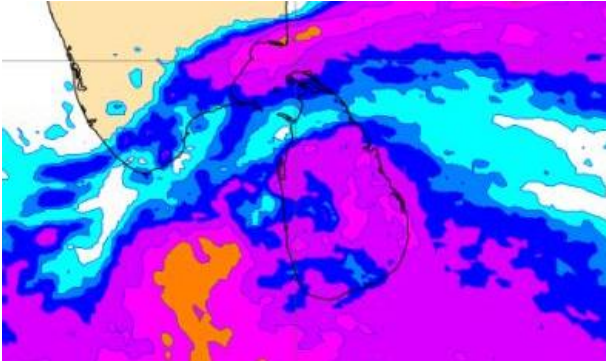
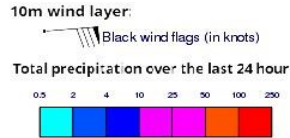
Wind Gust (m/s)



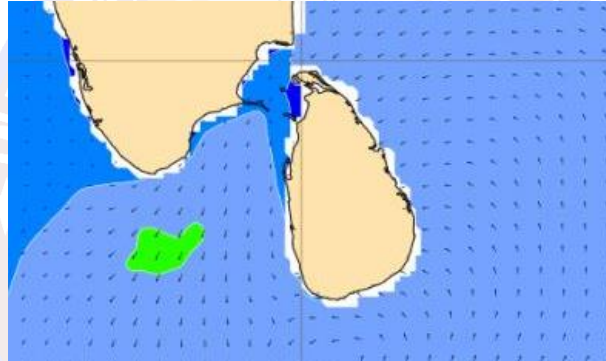
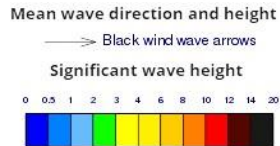
Showers or thundershowers will occur at times in the sea areas around the island. Heavy falls are likely at some places.

Wind speed will be 30-40 kmph in the sea areas around the island. The sea areas off the coast extending from Kankasanturai to Pottuvil via Batticaloa and Trincomalee and sea areas off the coast extending from Puttalam to Galle via Colombo can be rough at times as the wind speed can be 50-60 kmph at times.

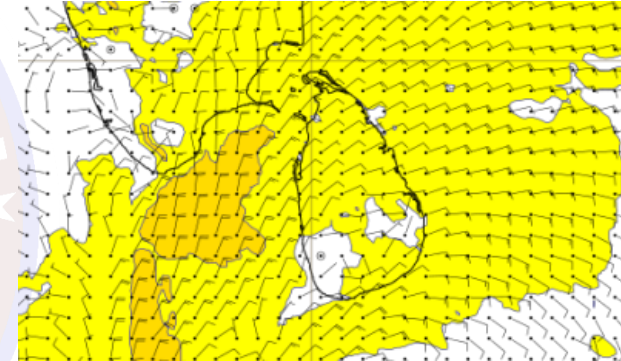
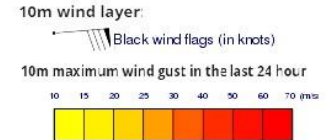
Wind and Rainfall Forecast (Total precipitation for 24 hrs)



Significant wave height (in meters)



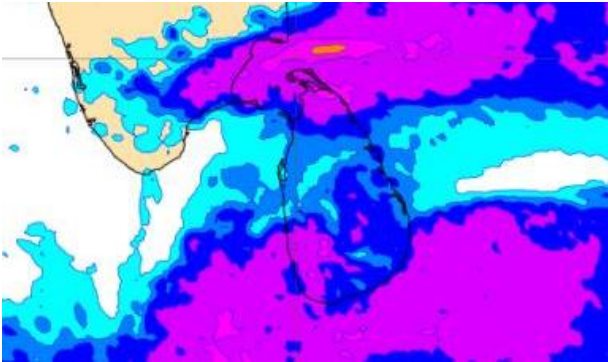
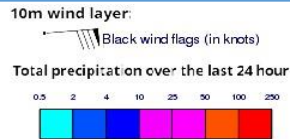
Wind Gust (m/s)



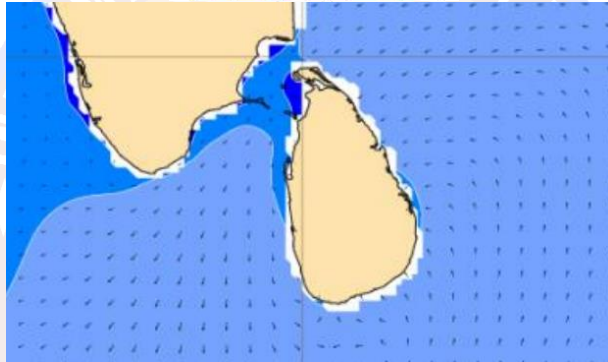
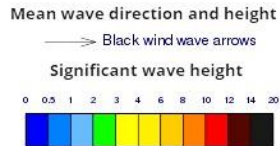
Showers or thundershowers will occur at several places in sea areas around the island. Fairly heavy showers can be expected at some places.

Wind speed will be 30-40 kmph in the sea areas around the island. The sea areas off the coast extending from Puttalam to Galle via Colombo can be fairly rough at times as the wind speed can be 50 kmph at times.

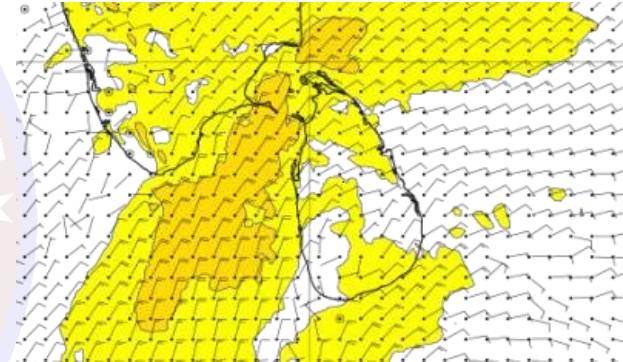
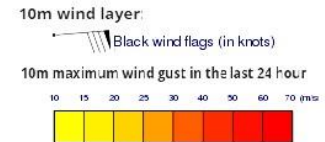
Wind and Rainfall Forecast (Total precipitation for 24 hrs)



Significant wave height (in meters)



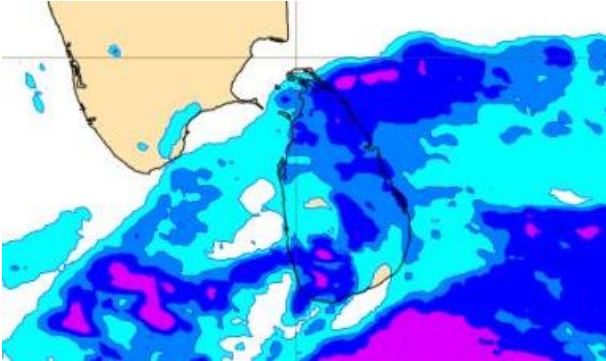
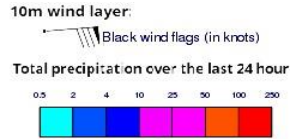
Wind Gust (m/s)



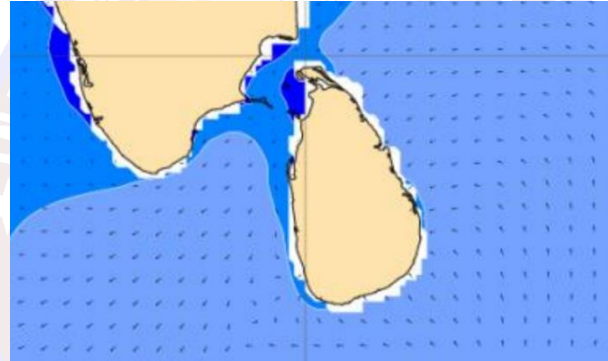
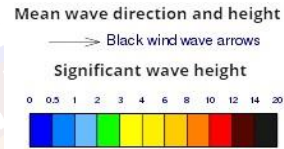
Showers or thundershowers will occur at several places in sea areas around the island.

Wind speed will be 25-35 kmph in the sea areas around the island. The sea areas off the coast extending from Kankasanturai to Colombo via Puttalam can be fairly rough at times as the wind speed can be 45-50 kmph at times.

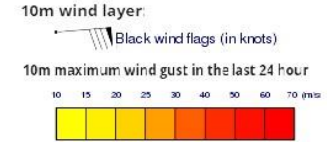
Wind and Rainfall Forecast (Total precipitation for 24 hrs)



Significant wave height (in meters)



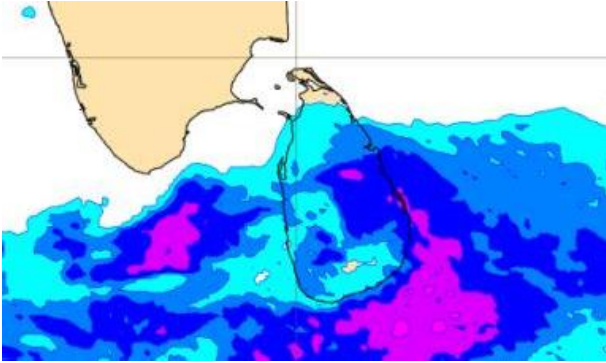
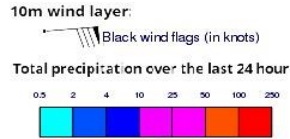
Wind Gust (m/s)



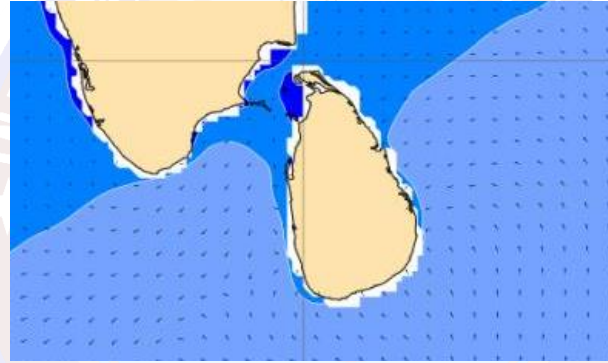
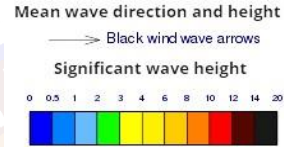
Showers or thundershowers will occur several places in the sea areas off the coast extending from Kankasanturai to Pottuvil via Batticaloa and Trincomalee.

Wind speed will be 25-35 kmph in the sea areas around the island. The sea areas off the coast extending from Kankasanturai to Colombo via Puttalam can be fairly rough at times as the wind speed can be 45 kmph at times.

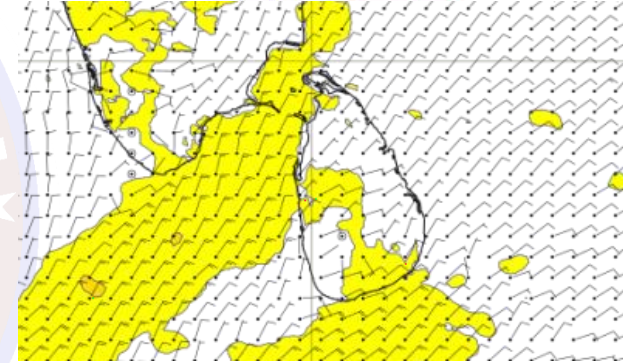
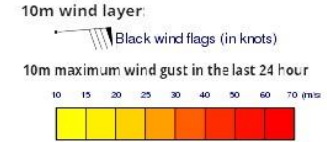
Wind and Rainfall Forecast (Total precipitation for 24 hrs)



Significant wave height (in meters)



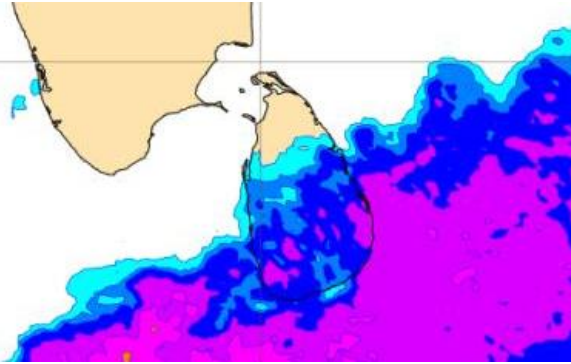
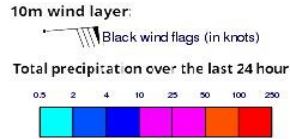
Wind Gust (m/s)



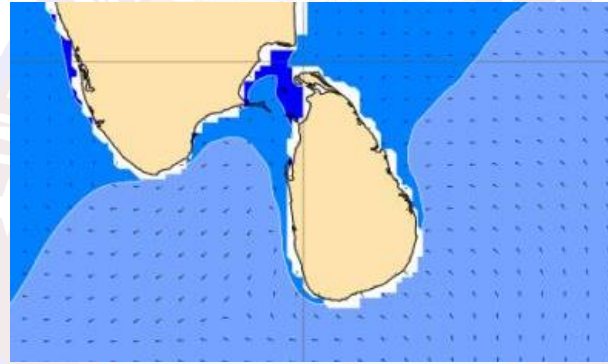
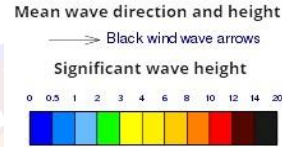
Showers or thundershowers will occur several places in the sea areas off the coast extending from Trincomalee to Hambantota via Batticaloa and Pottuvil.

Wind speed will be 25-35 kmph in the sea areas around the island.

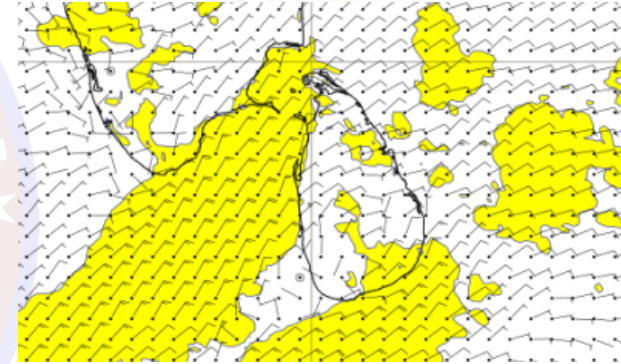
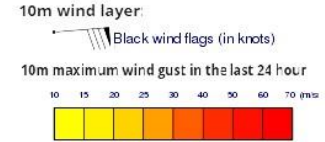
Wind and Rainfall Forecast (Total precipitation for 24 hrs)



Significant wave height (in meters)



Wind Gust (m/s)



Showers or thundershowers will occur several places in the sea areas off the coast extending from Trincomalee to Hambantota via Batticaloa and Pottuvil. Showers or thundershowers may occur at several places in the sea area extending from Puttalam to Galle via Colombo during the evening or night.

Wind speed will be 25-35 kmph in the sea areas around the island.