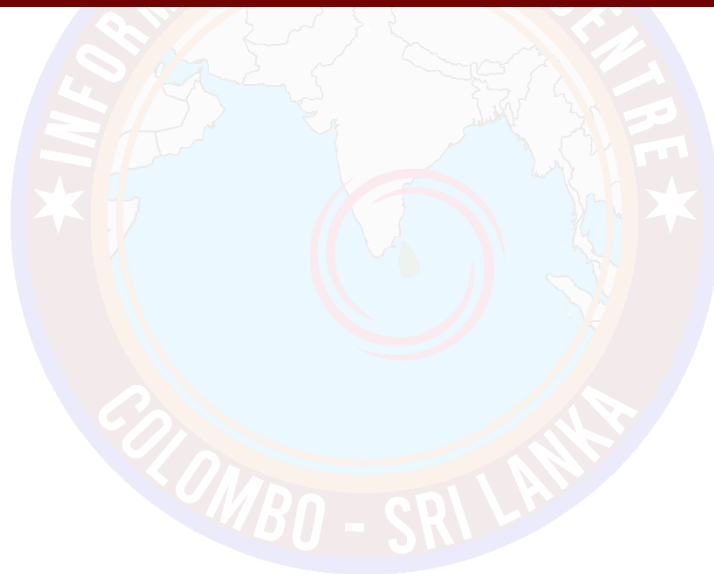


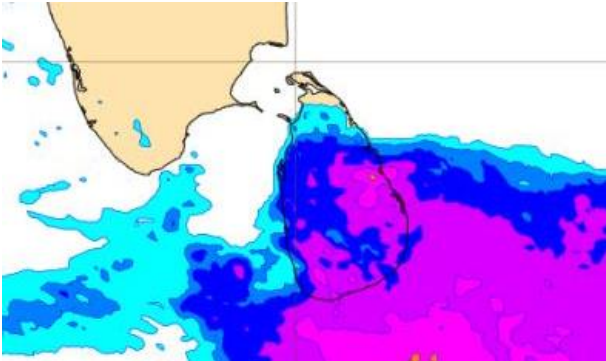
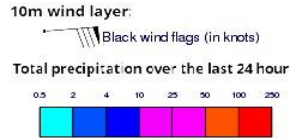
INFORMATION FUSION CENTRE COLOMBO

8 DAY FORECAST FOR COASTAL AREAS AROUND SRI LANKA

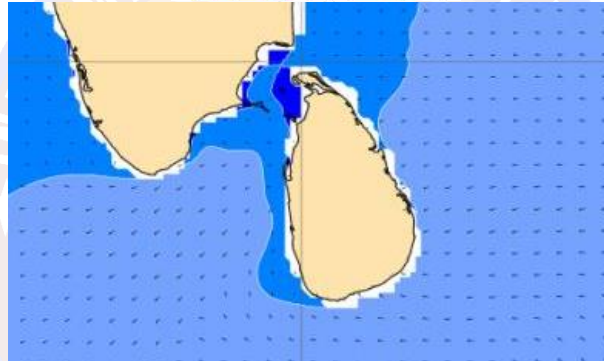
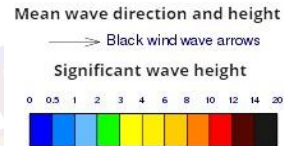
Issued at 10.00 p.m. on 15 January 2023
Marine Weather Division, National Meteorological Centre, Department of
Meteorology.



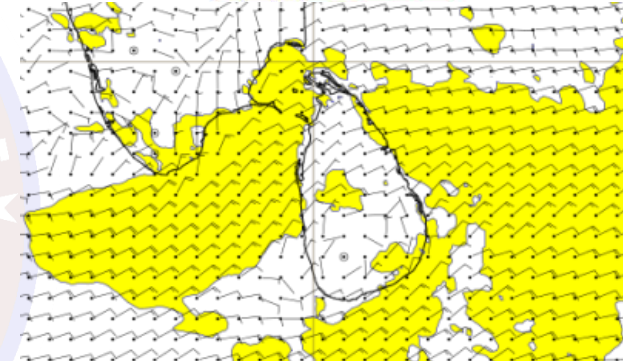
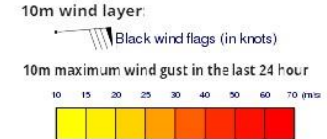
Wind and Rainfall Forecast (Total precipitation for 24 hrs)



Significant wave height (in meters)



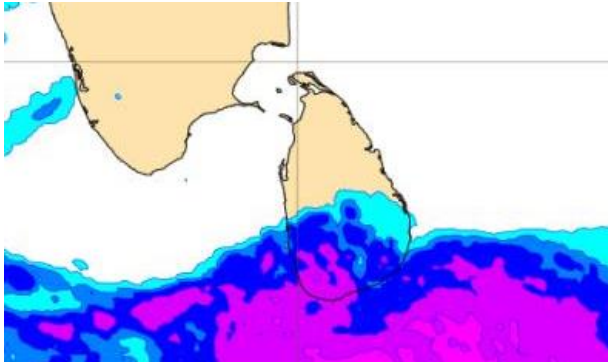
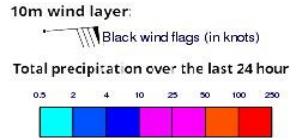
Wind Gust (m/s)



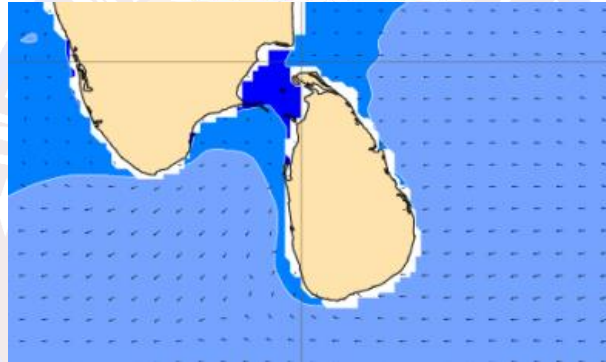
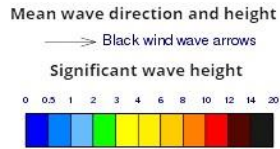
Showers or thundershowers will occur at several places in the sea areas off the coast extending from Trincomalee to Hambantota via Pottuvil. Showers or thundershowers may occur at a few places in the other sea areas around the island during the evening or night.

Wind speed will be 25-35 kmph in the sea areas around the island. The sea areas off the coast extending from Hambantota to Pottuvil and from Colombo to Mannar via Puttalam can be fairly rough at times as the wind speed can be 40-50 kmph at times

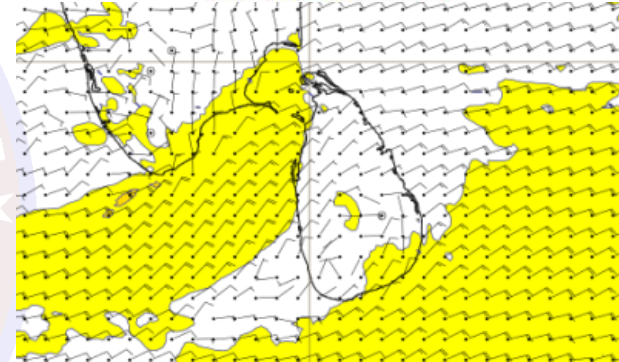
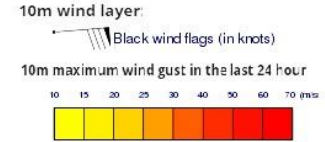
Wind and Rainfall Forecast (Total precipitation for 24 hrs)



Significant wave height (in meters)



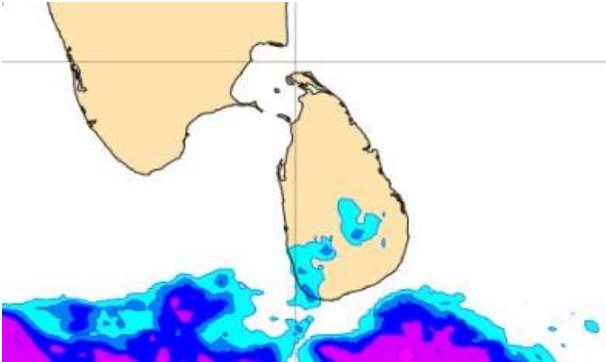
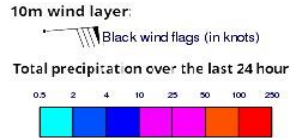
Wind Gust (m/s)



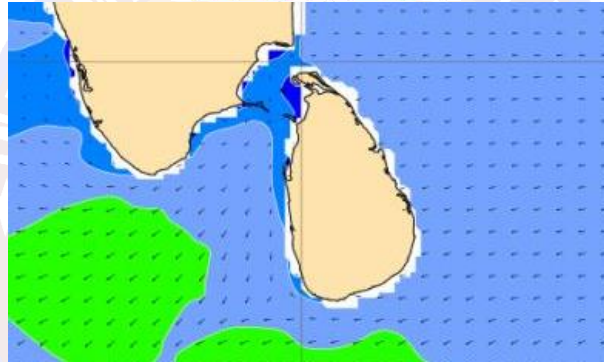
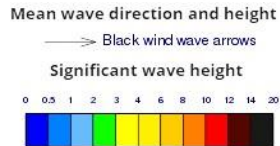
Showers or thundershowers will occur at several places in the sea areas off the coast extending from Colombo to Hambantota via Galle.

Wind speed will be 25-35 kmph in the sea areas around the island. The sea areas off the coast extending from Kankasanturai to Colombo via Puttalam and from Hambantota to Pottuvil can be rough at times as the wind speed can be 40-50 kmph at times

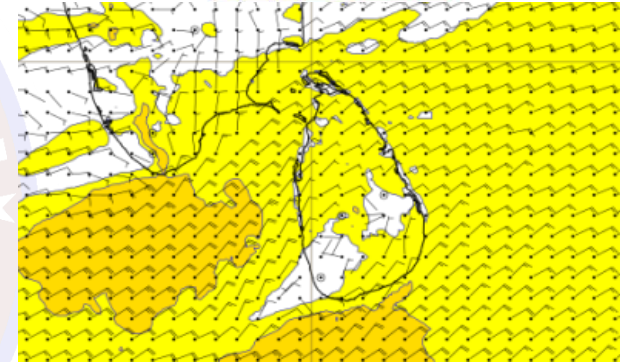
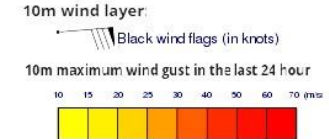
Wind and Rainfall Forecast (Total precipitation for 24 hrs)



Significant wave height (in meters)



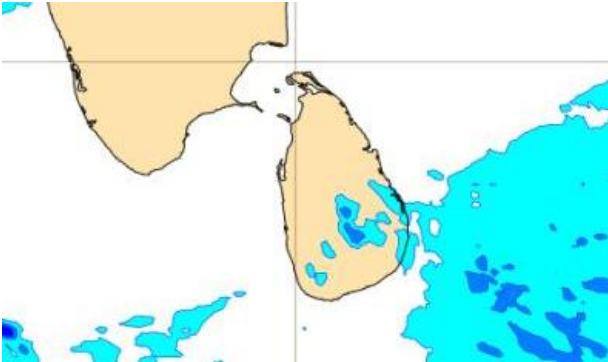
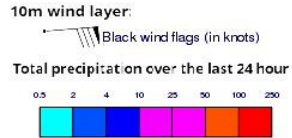
Wind Gust (m/s)



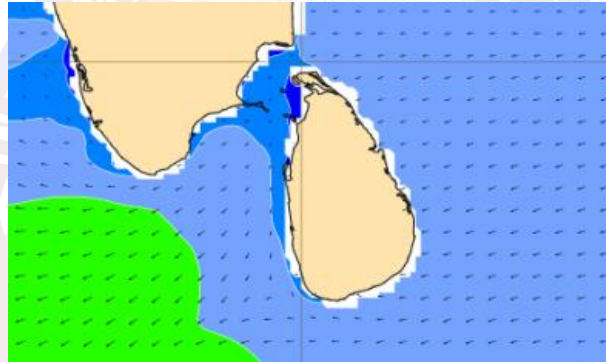
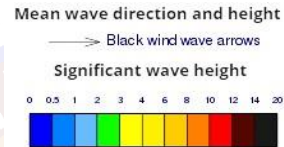
Mainly fair weather will prevail over sea areas around the island.

Wind speed will be 25-35 kmph in the sea areas around the island. The sea areas off the coast extending from Hambantota to Pottuvil and from Colombo to Mannar via Puttalam can be fairly rough at times as the wind speed can be 40-50 kmph at times

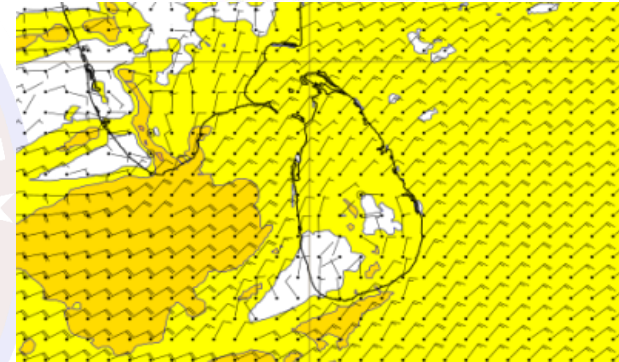
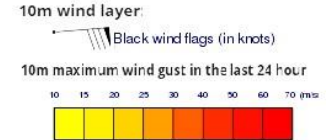
Wind and Rainfall Forecast (Total precipitation for 24 hrs)



Significant wave height (in meters)



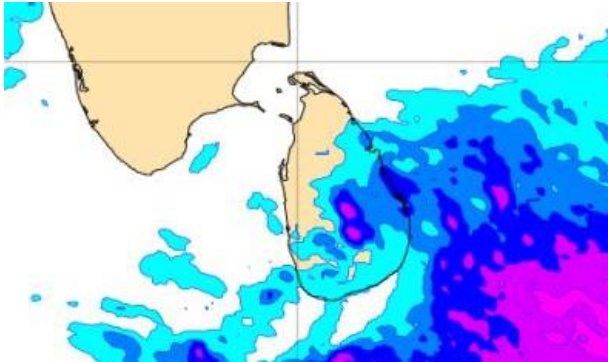
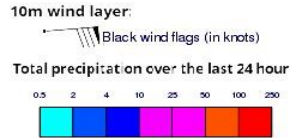
Wind Gust (m/s)



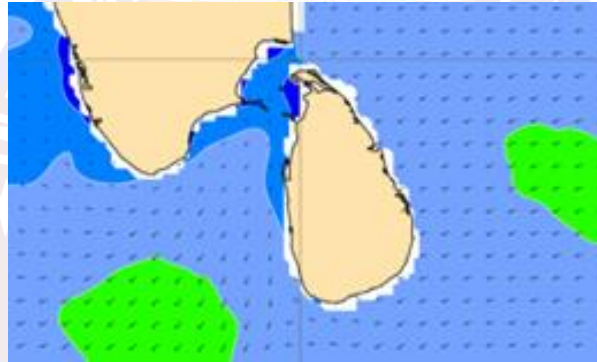
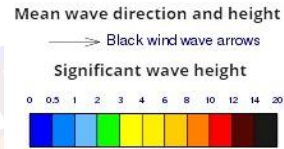
Mainly fair weather will prevail over sea areas around the island.

Wind speed will be 25-35 kmph in the sea areas around the island.

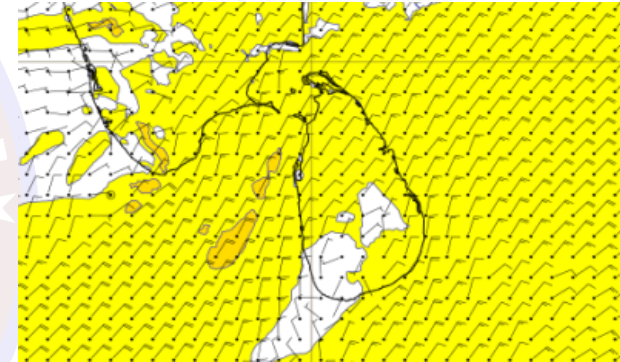
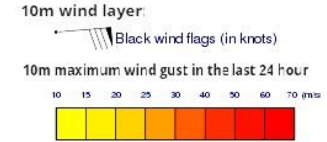
Wind and Rainfall Forecast (Total precipitation for 24 hrs)



Significant wave height (in meters)



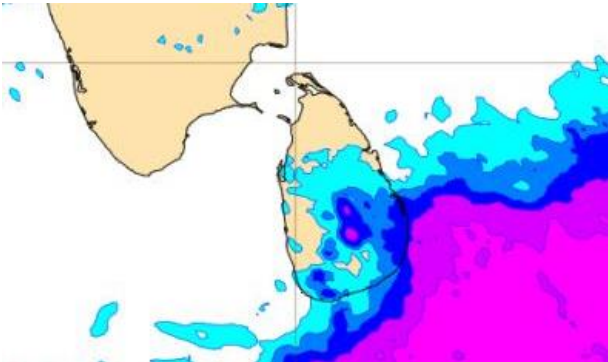
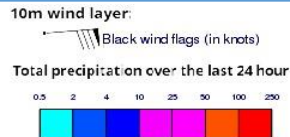
Wind Gust (m/s)



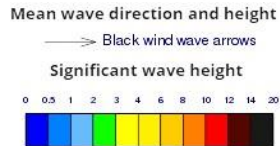
Mainly fair weather will prevail over sea areas around the island.

Wind speed will be 25-35 kmph in the sea areas around the island. The sea areas off the coast extending from Hambantota to Pottuvil and from Colombo to Mannar via Puttalam can be fairly rough at times as the wind speed can be 40-45 kmph at times.

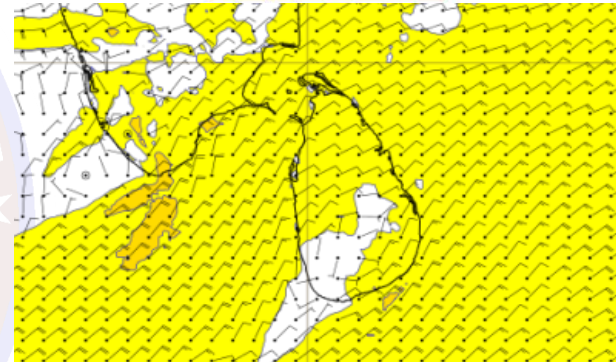
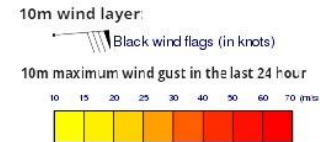
Wind and Rainfall Forecast (Total precipitation for 24 hrs)



Significant wave height (in meters)



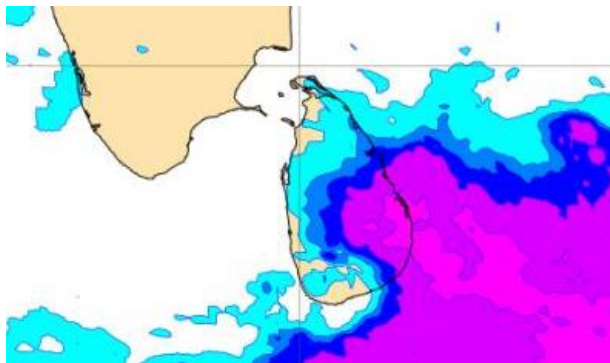
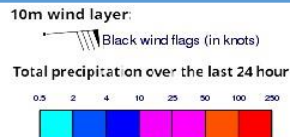
Wind Gust (m/s)



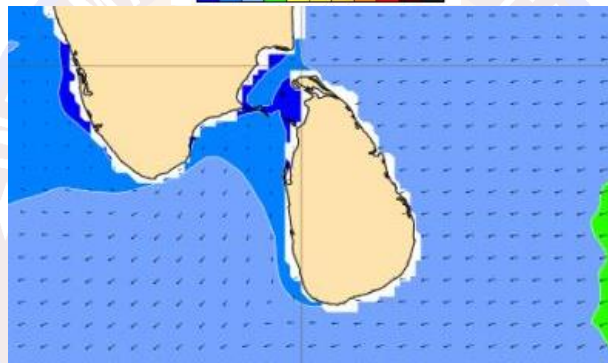
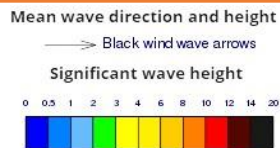
Mainly fair weather will prevail over sea areas around the island.

Wind speed will be 25-35 kmph in the sea areas around the island. The sea areas off the coast extending from Hambantota to Pottuvil and from Colombo to Mannar via Puttalam can be fairly rough at times as the wind speed can be 40-45 kmph at times

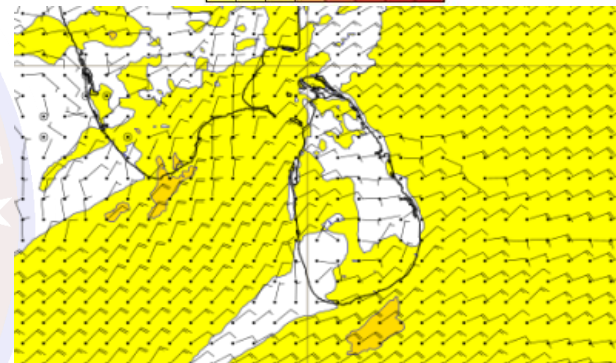
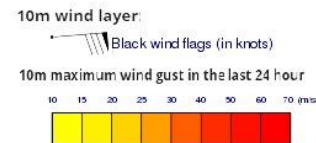
Wind and Rainfall Forecast (Total precipitation for 24 hrs)



Significant wave height (in meters)



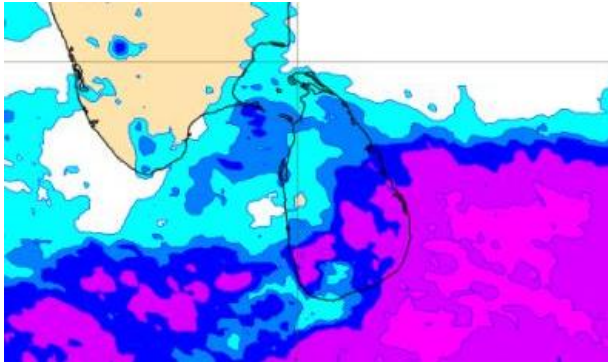
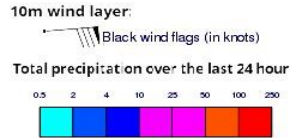
Wind Gust (m/s)



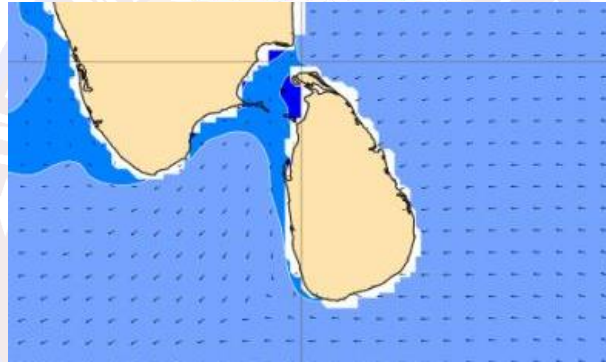
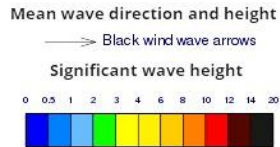
Mainly fair weather will prevail over sea areas around the island.

Wind speed will be 25-35 kmph in the sea areas around the island. The sea areas off the coast extending from Hambantota to Pottuvil and from Colombo to Mannar via Puttalam can be fairly rough at times as the wind speed can be 40-45 kmph at times

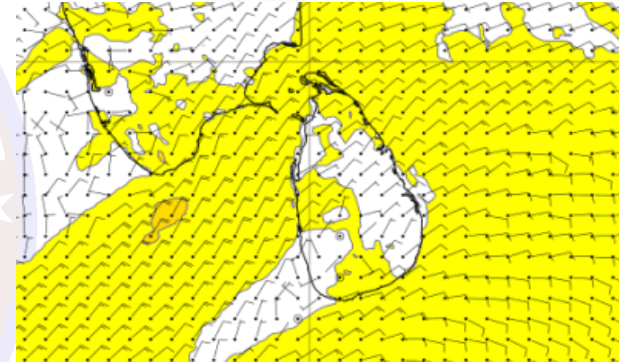
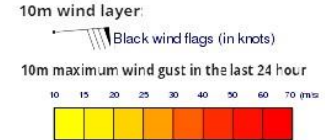
Wind and Rainfall Forecast (Total precipitation for 24 hrs)



Significant wave height (in meters)



Wind Gust (m/s)



Mainly fair weather will prevail over sea areas around the island.

Wind speed will be 25-35 kmph in the sea areas around the island. The sea areas off the coast extending from Kankasanturai to Colombo via Puttalam and from Galle to Pottuvil via Hambantota can be fairly rough at times as the wind speed can be 40-50 kmph at times