



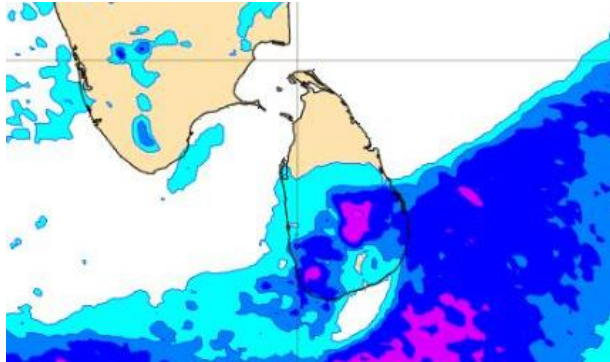
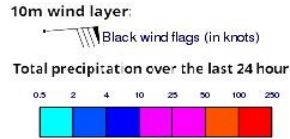
# **INFORMATION FUSION CENTRE COLOMBO**

**8 DAY FORECAST FOR COASTAL AREAS AROUND SRI LANKA**

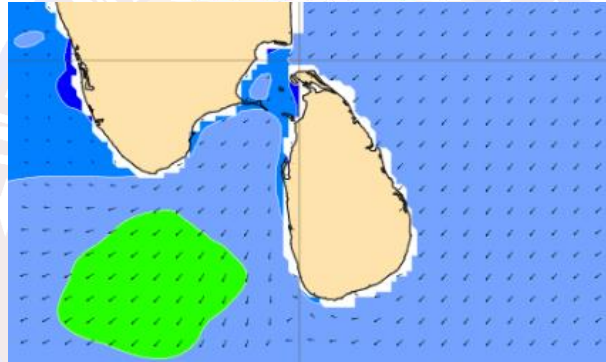
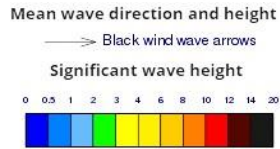
Issued at 10.00 p.m. on 07 January 2023  
Marine Weather Division, National Meteorological Centre, Department of  
Meteorology.



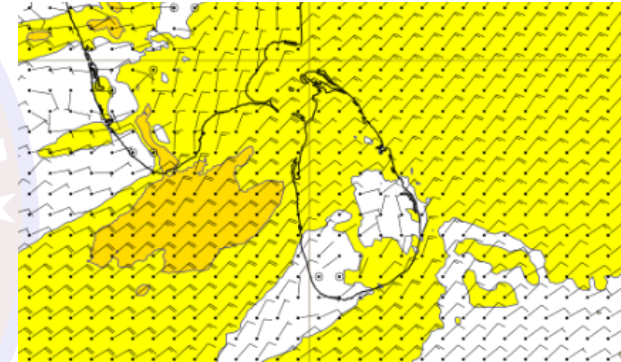
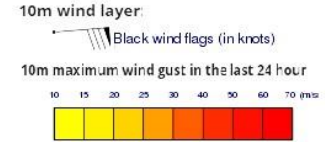
## Wind and Rainfall Forecast (Total precipitation for 24 hrs)



## Significant wave height (in meters)



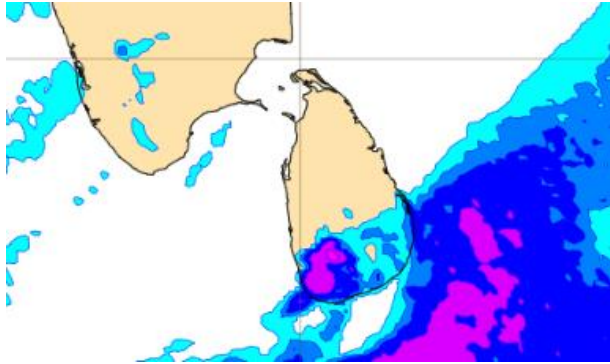
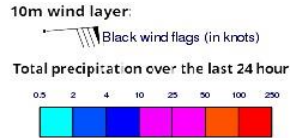
## Wind Gust (m/s)



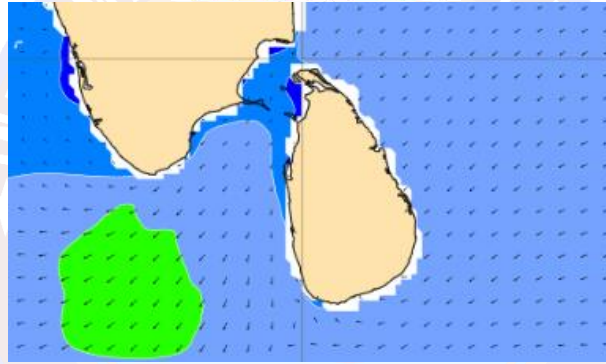
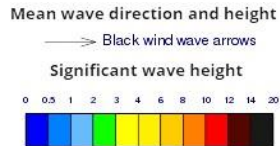
Showers or thundershowers will occur at several places in the sea areas off the coast extending from Kankasanthurai to Pottuvil via Trincomalee and Batticaloa. Showers or thundershowers will occur at several places in the other sea areas around the Island during the afternoon or night.

Wind speed will be 25-35 kmph in the sea areas around the island. The sea areas off the coast extending from Trincomalee to Colombo via Kankasanthurai, Mannar and Puttalam and from Hambantota to Pottuvil can be rough at times as the wind speed can be 45-55 kmph at times.

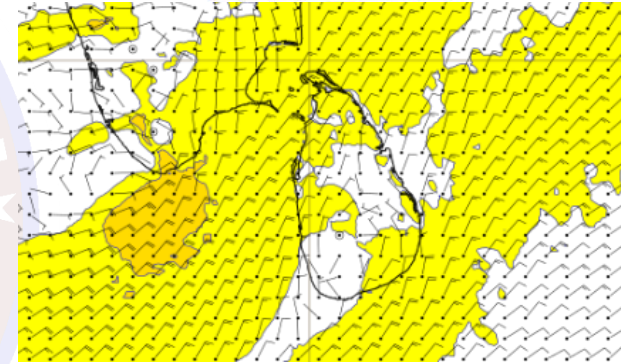
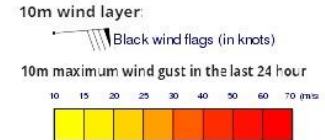
## Wind and Rainfall Forecast (Total precipitation for 24 hrs)



## Significant wave height (in meters)



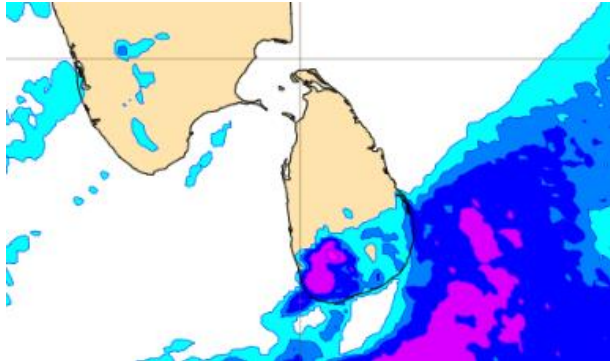
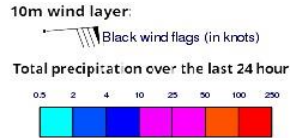
## Wind Gust (m/s)



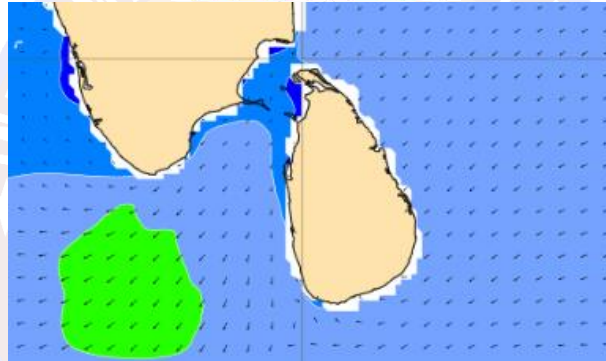
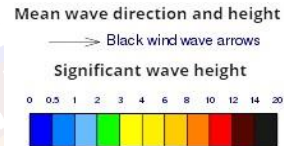
Showers or thundershowers will occur at several places in the sea areas off the coast extending from Batticaloa to Pottuvil. Showers or thundershowers will occur at several places in the sea areas off the coast extending from Colombo to Hambantota via Galle during the afternoon or night.

Wind speed will be 25-35 kmph in the sea areas around the island. The sea areas off the coast extending from Hambantota to Pottuvil and from Colombo to Mannar via Puttalam can be fairly rough at times as the wind speed can be 45-50 kmph at times.

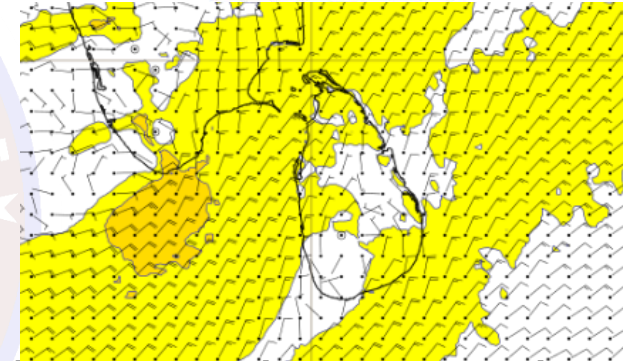
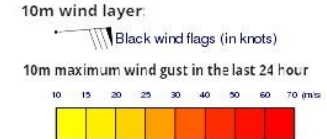
## Wind and Rainfall Forecast (Total precipitation for 24 hrs)



## Significant wave height (in meters)



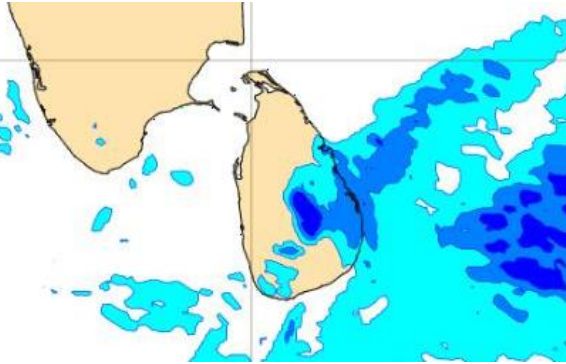
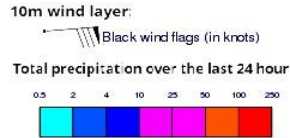
## Wind Gust (m/s)



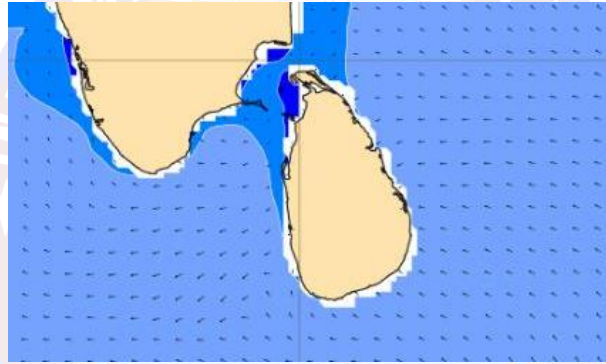
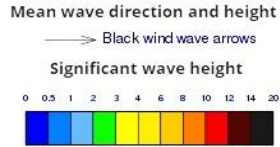
Showers or thundershowers will occur at a few places in the sea areas off the coast extending from Batticaloa to Pottuvil. Showers or thundershowers will occur at a few places in the sea areas off the coast extending from Colombo to Hambantota via Galle during the afternoon or night.

Wind speed will be 25-35 kmph in the sea areas around the island. The sea areas off the coast extending from Hambantota to Pottuvil and from Colombo to Mannar via Puttalam can be fairly rough at times as the wind speed can be 45-50 kmph at times.

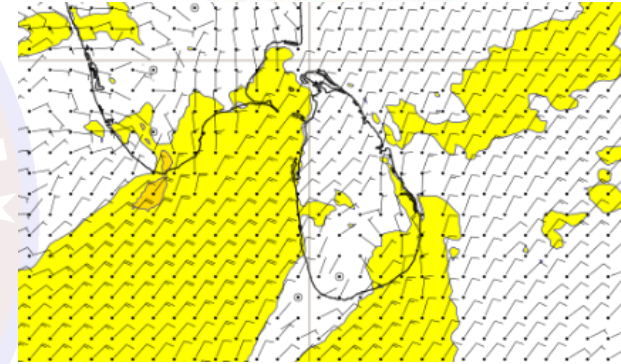
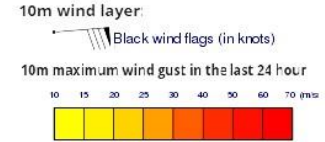
## Wind and Rainfall Forecast (Total precipitation for 24 hrs)



## Significant wave height (in meters)



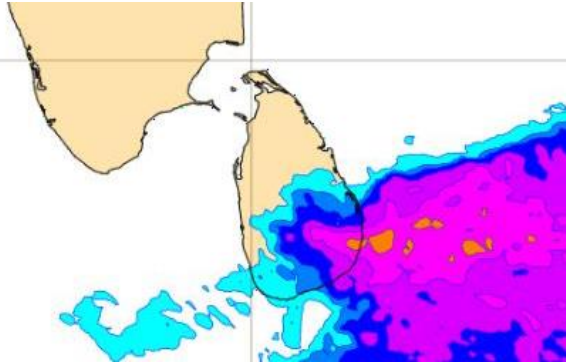
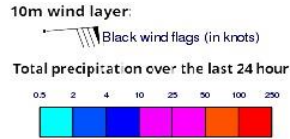
## Wind Gust (m/s)



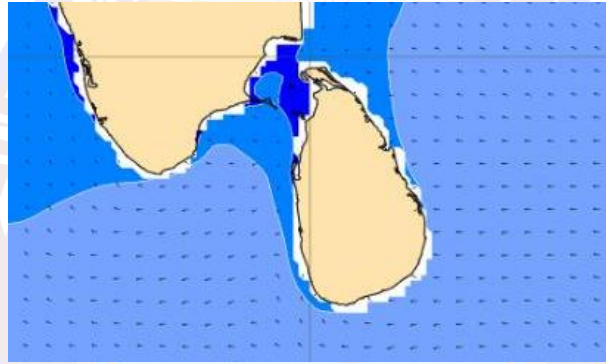
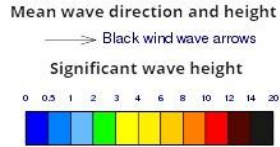
Showers or thundershowers will occur at a few places in the sea areas off the coast extending from Trincomalee to Pottuvil via Batticaloa .

Wind speed will be 25-35 kmph in the sea areas around the island. The sea areas off the coast extending from Hambantota to Pottuvil and from Colombo to Mannar via Puttalam can be fairly rough at times as the wind speed can be 45 kmph at times.

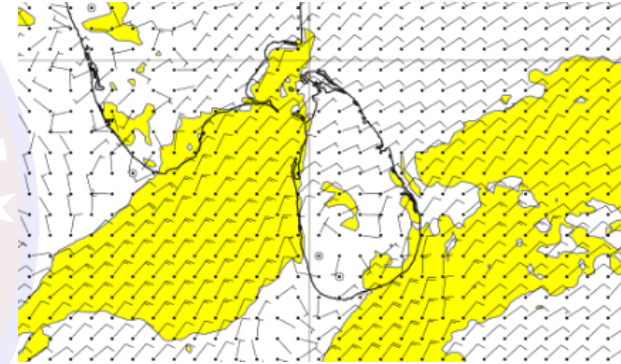
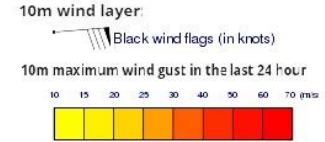
## Wind and Rainfall Forecast (Total precipitation for 24 hrs)



## Significant wave height (in meters)



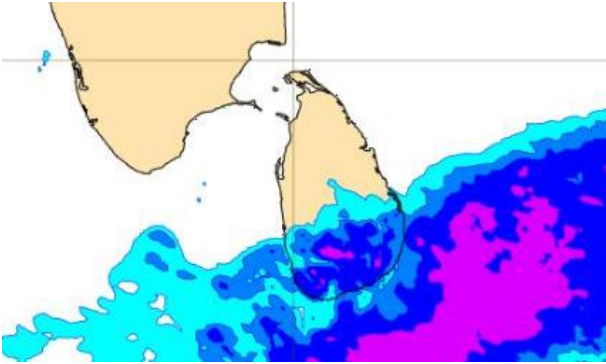
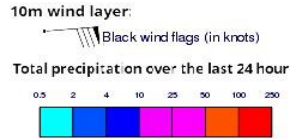
## Wind Gust (m/s)



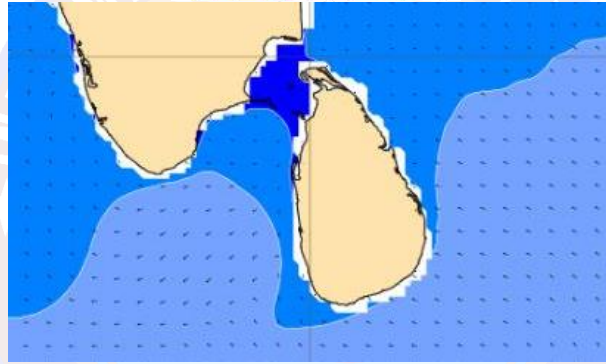
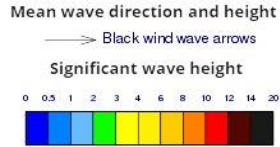
Showers or thundershowers will occur at times in the sea areas off the coast extending from Trincomalee to Pottuvil via Batticaloa .

Wind speed will be 25-35 kmph in the sea areas around the island. The sea areas off the coast extending from Colombo to Kankasanturai via Puttalam & Mannar can be fairly rough at times as the wind speed can be 45 kmph at times.

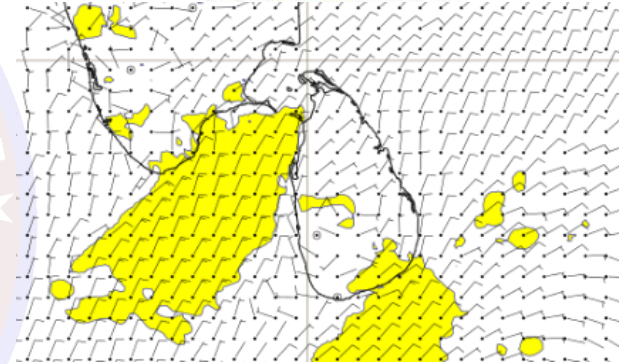
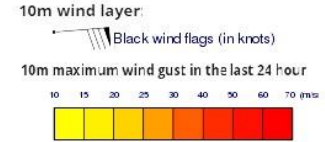
## Wind and Rainfall Forecast (Total precipitation for 24 hrs)



## Significant wave height (in meters)



## Wind Gust (m/s)

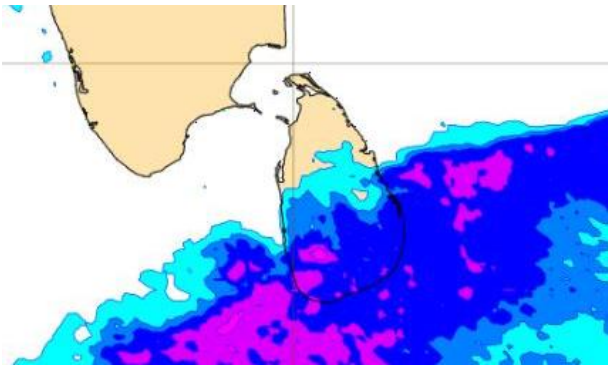
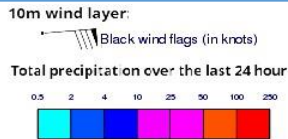


Showers or thundershowers will occur at several places in the sea areas off the coast extending from Batticaloa to Pottuvil. Showers or thundershowers will occur at a few places in the sea areas off the coast extending from Colombo to Hambantota via Galle during the afternoon or night.

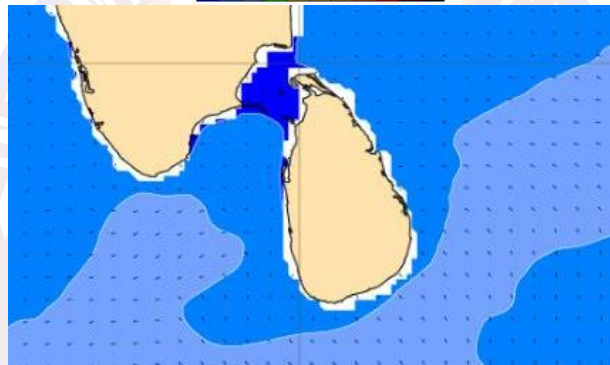
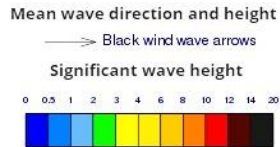
Wind speed will be 25-35 kmph in the sea areas around the island.



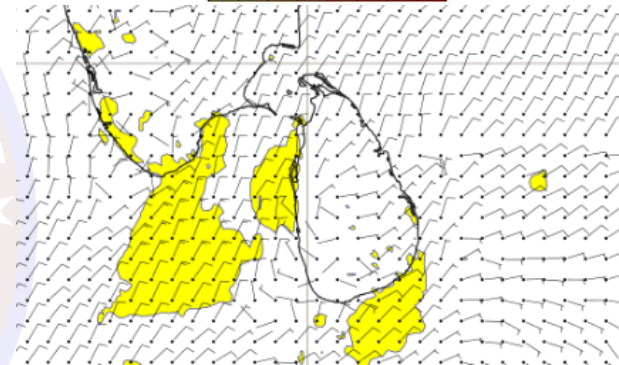
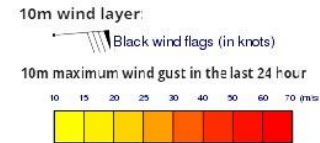
## Wind and Rainfall Forecast (Total precipitation for 24 hrs)



## Significant wave height (in meters)



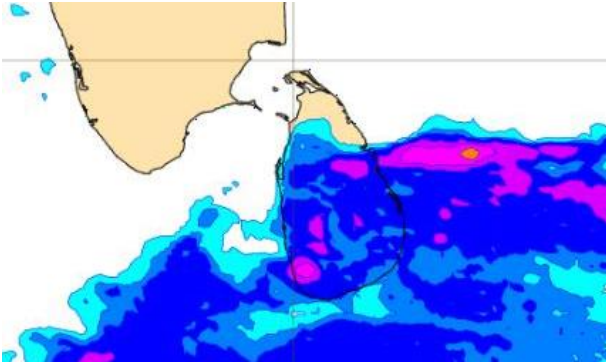
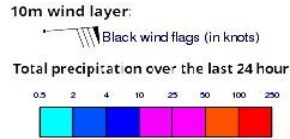
## Wind Gust (m/s)



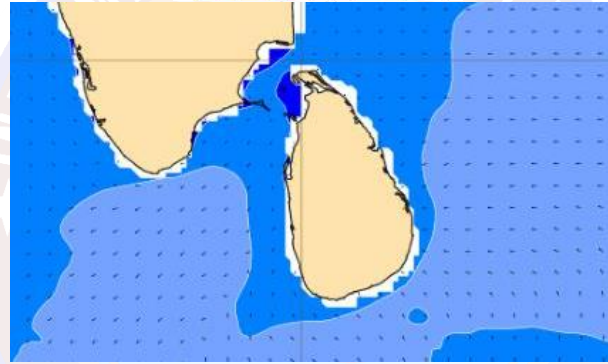
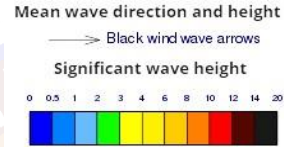
Showers or thundershowers will occur at several places in the sea areas off the coast extending from Trincomalee to Hambantota via Batticaloa & Pottuvil. Showers or thundershowers will occur at several places in the sea areas off the coast extending from Colombo to Hambantota via Galle during the afternoon or night.

Wind speed will be 25-35 kmph in the sea areas around the island.

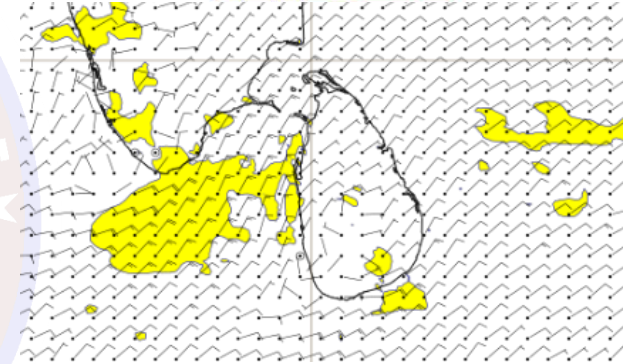
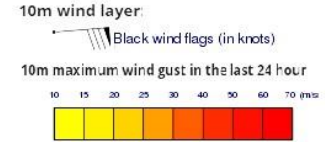
## Wind and Rainfall Forecast (Total precipitation for 24 hrs)



## Significant wave height (in meters)



## Wind Gust (m/s)



Showers or thundershowers will occur at several places in the sea areas off the coast extending from Trincomalee to Hambantota via Batticaloa & Pottuvil. Showers or thundershowers will occur at several places in the other sea areas around the Island during the afternoon or night.

Wind speed will be 25-35 kmph in the sea areas around the island.