



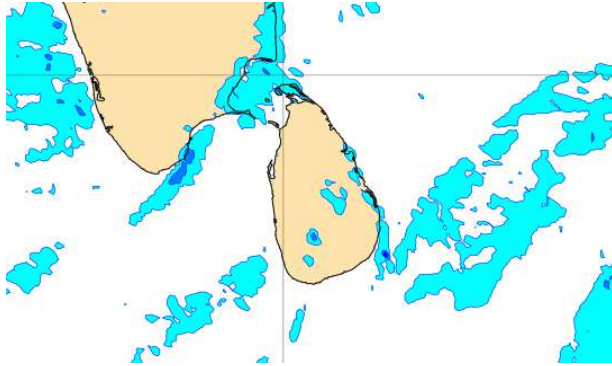
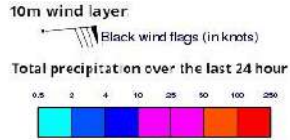
INFORMATION FUSION CENTRE COLOMBO

8 DAY FORECAST FOR COASTAL AREAS AROUND SRI LANKA

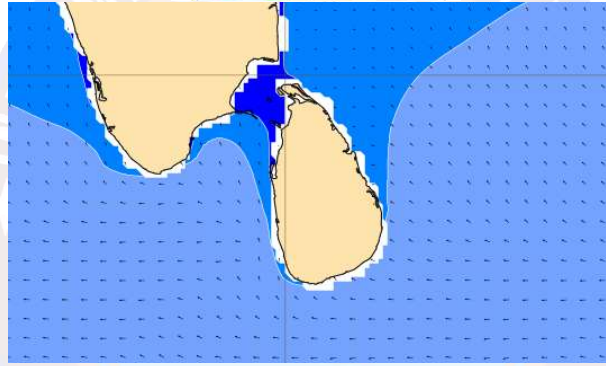
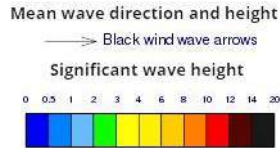
Issued at 10.00 p.m. on 30 December 2022
Marine Weather Division, National Meteorological Centre, Department of
Meteorology.



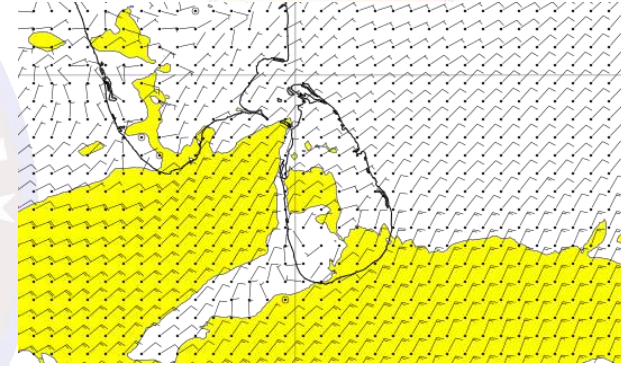
Wind and Rainfall Forecast (Total precipitation for 24 hrs)



Significant wave height (in meters)



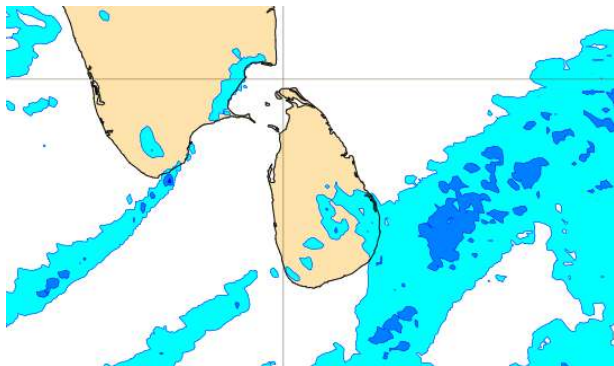
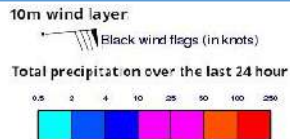
Wind Gust (m/s)



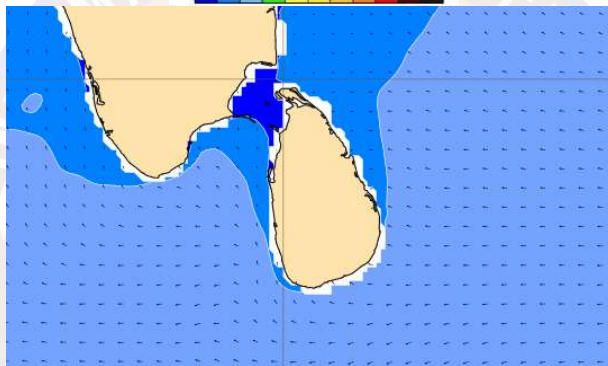
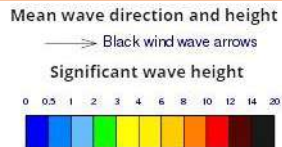
Mainly fair weather will prevail over sea areas around the island.

Wind speed will be 20-30 kmph in the sea areas around the island. The sea areas off the coast extending from Galle to Pottuvil via Hambantota and from Colombo to Mannar via Puttalam can be fairly rough at times as the wind speed can be 40-45 kmph at times.

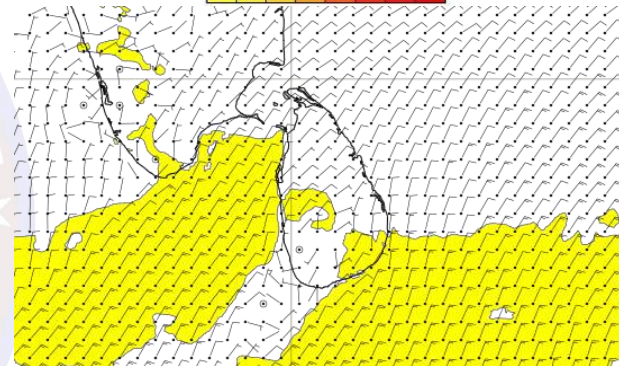
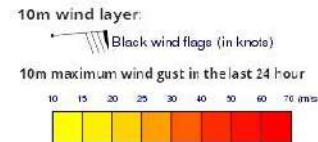
Wind and Rainfall Forecast (Total precipitation for 24 hrs)



Significant wave height (in meters)



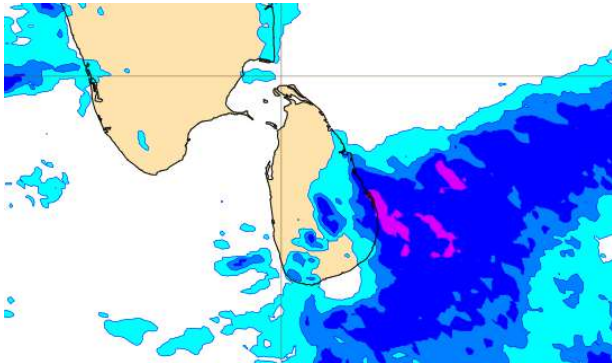
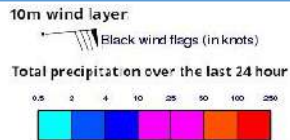
Wind Gust (m/s)



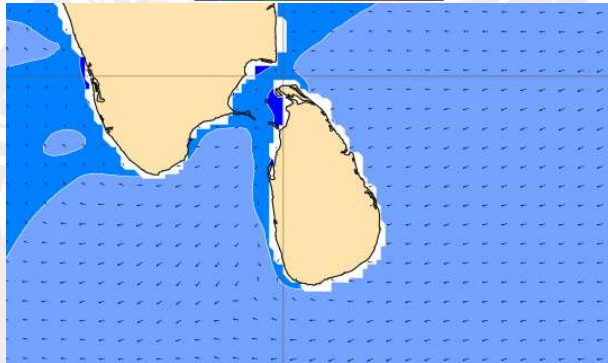
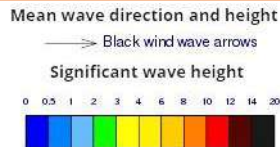
Mainly fair weather will prevail over sea areas around the island.

Wind speed will be 20-30 kmph in the sea areas around the island. The sea areas off the coast extending from Galle to Pottuvil via Hambantota and from Colombo to Mannar via Puttalam can be moderate at times as the wind speed can be 40 kmph at times.

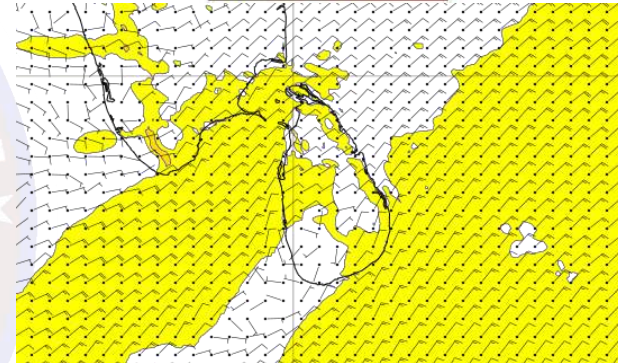
Wind and Rainfall Forecast (Total precipitation for 24 hrs)



Significant wave height (in meters)



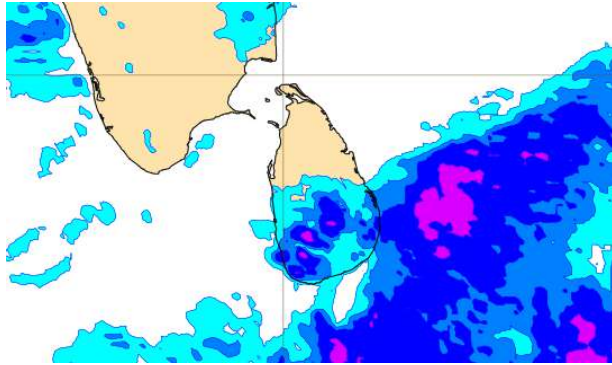
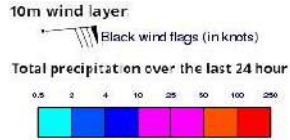
Wind Gust (m/s)



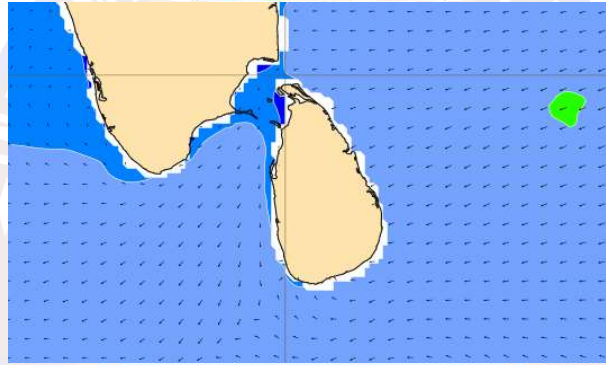
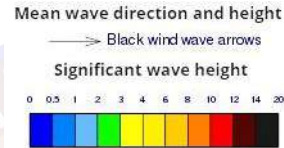
Showers or thundershowers may occur at a few places in the sea areas off the coast extending from Batticaloa to Hambantota via Pottuvil.

Wind speed will be 25-35 kmph in the sea areas around the island. The sea areas off the coast extending from Galle to Pottuvil via Hambantota and from Colombo to Kankasanthurai via Puttalam & Mannar can be fairly rough at times as the wind speed can be 45 kmph at times.

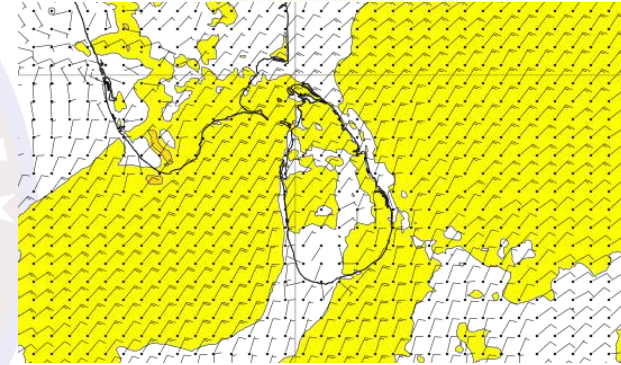
Wind and Rainfall Forecast (Total precipitation for 24 hrs)



Significant wave height (in meters)



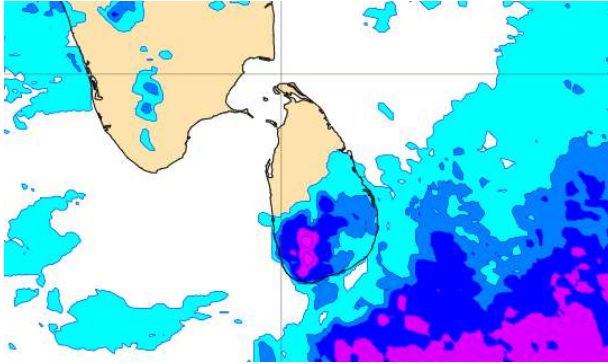
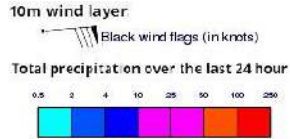
Wind Gust (m/s)



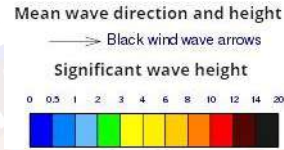
Showers or thundershowers may occur at a few places in the sea areas off the coast extending from Batticaloa to Hambantota via Pottuvil.

Wind speed will be 25-35 kmph in the sea areas around the island and sea areas can be fairly rough at times as the wind speed can be 40-50 kmph at times.

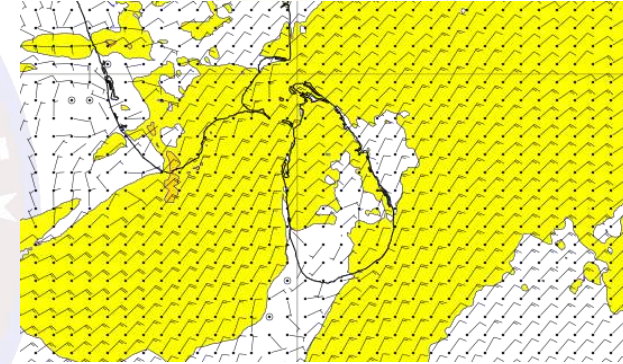
Wind and Rainfall Forecast (Total precipitation for 24 hrs)



Significant wave height (in meters)



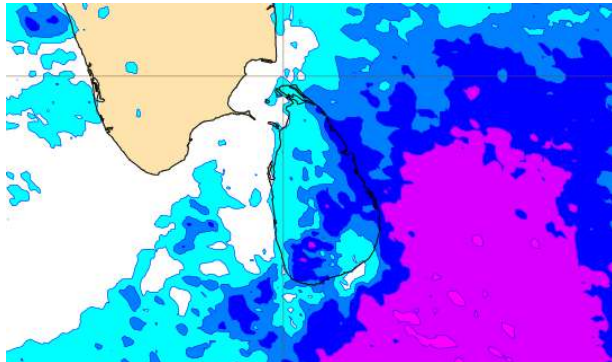
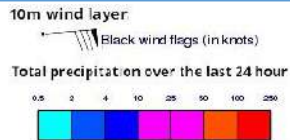
Wind Gust (m/s)



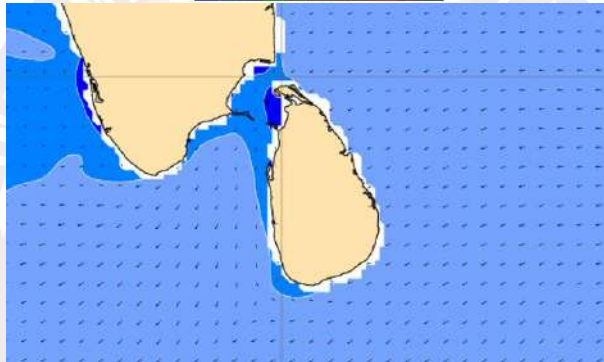
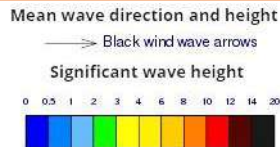
Showers or thundershowers may occur at several places in the sea areas off the coast extending from Trincomalee to Hambantota via Batticaloa & Pottuvil.

Wind speed will be 25-35 kmph in the sea areas around the island and sea areas can be fairly rough at times as the wind speed can be 40-50 kmph at times.

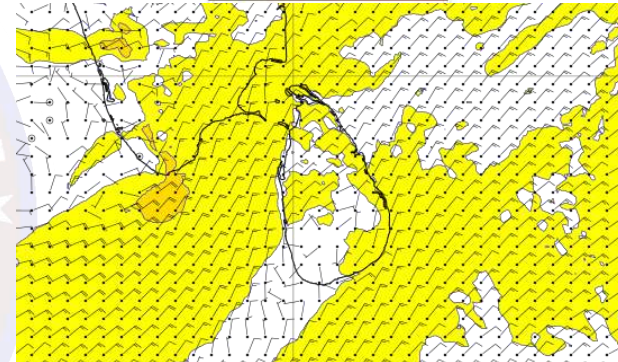
Wind and Rainfall Forecast (Total precipitation for 24 hrs)



Significant wave height (in meters)



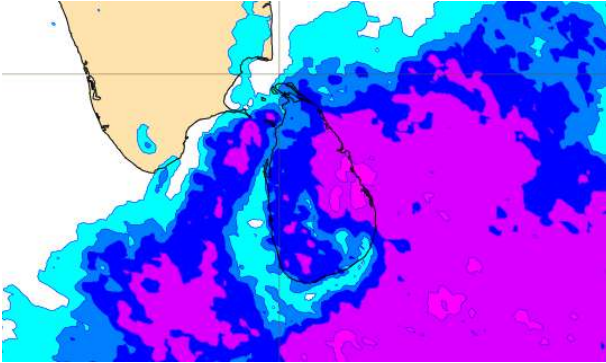
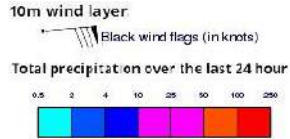
Wind Gust (m/s)



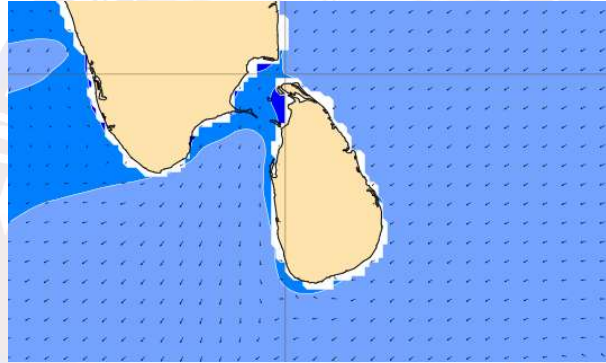
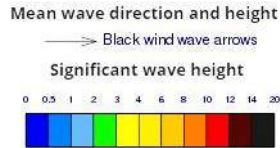
Showers or thundershowers may occur at several places in the sea areas off the coast extending from Trincomalee to Hambantota via Batticaloa & Pottuvil.

Wind speed will be 25-35 kmph in the sea areas around the island. The sea areas off the coast extending from Galle to Pottuvil via Hambantota and from Colombo to Kankasanthurai via Puttalam & Mannar can be fairly rough at times as the wind speed can be 45 kmph at times.

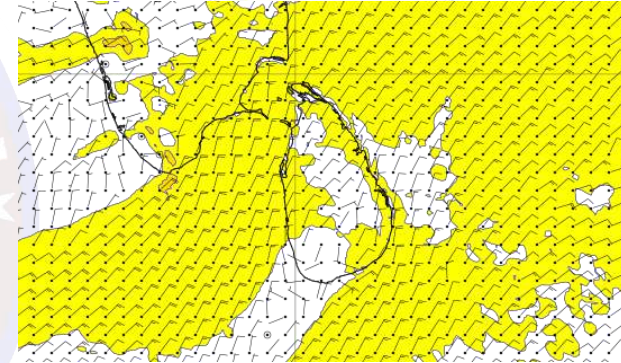
Wind and Rainfall Forecast (Total precipitation for 24 hrs)



Significant wave height (in meters)



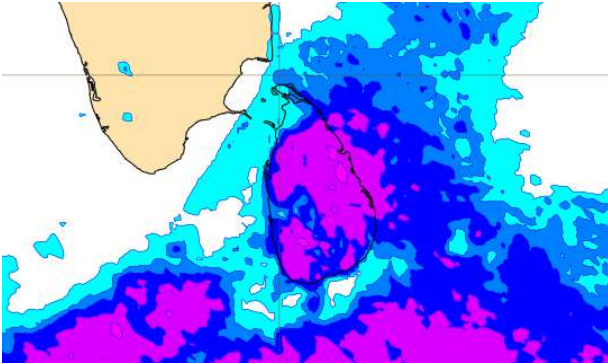
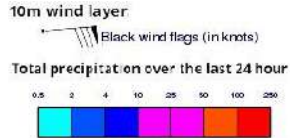
Wind Gust (m/s)



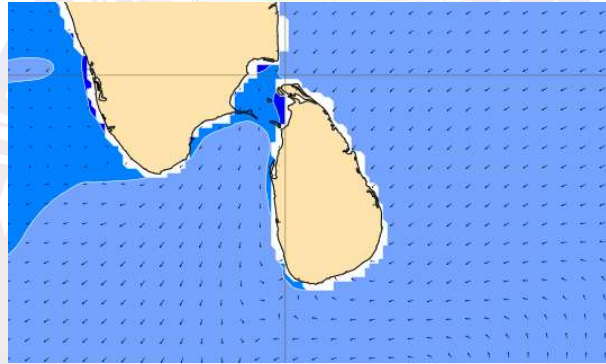
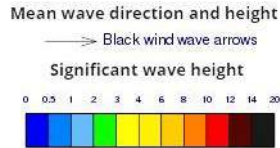
Showers or thundershowers will occur at times in the sea areas off the coast extending from Kankasanthurai to Pottuvil via Trincomalee & Batticaloa. Thundershowers may occur at several places in the other sea areas particularly during the afternoon or evening.

Wind speed will be 25-35 kmph in the sea areas around the island. The sea areas off the coast extending from Puttalam to Kankasanthurai via Mannar and from Hambantota to Pottuvil can be fairly rough at times as the wind speed can be 45 kmph at times.

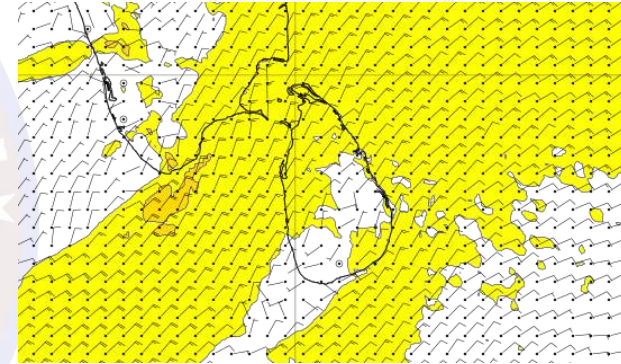
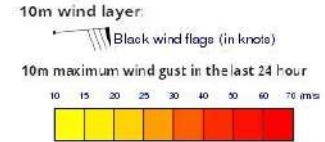
Wind and Rainfall Forecast (Total precipitation for 24 hrs)



Significant wave height (in meters)



Wind Gust (m/s)



Showers or thundershowers will occur at several places in the sea areas off the coast extending from Kankasanthurai to Pottuvil via Trincomalee & Batticaloa. Thundershowers may occur at a few places in the other sea areas particularly during the afternoon or evening.

Wind speed will be 25-35 kmph in the sea areas around the island and sea areas can be fairly rough at times as the wind speed can be 40-50 kmph at times.