



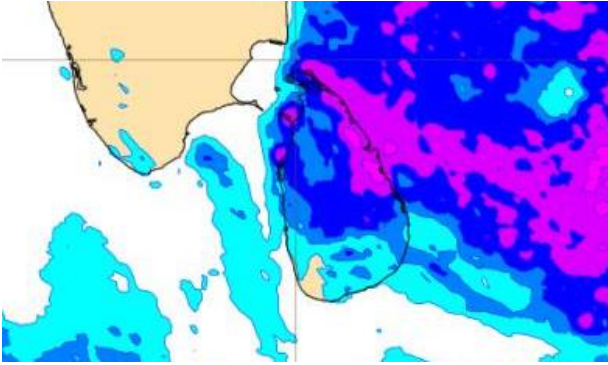
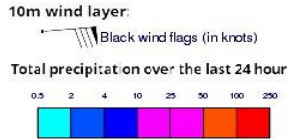
INFORMATION FUSION CENTRE COLOMBO

8 DAY FORECAST FOR COASTAL AREAS AROUND SRI LANKA

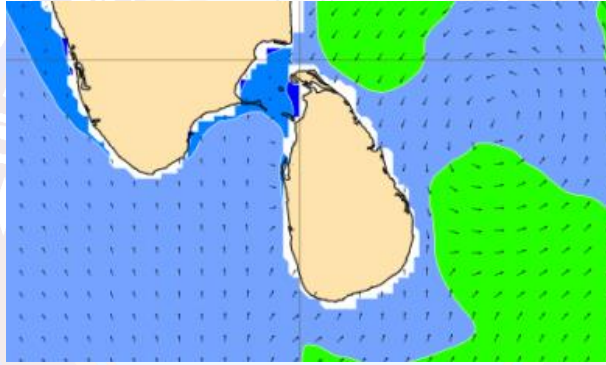
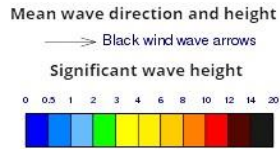
Issued at 10.00 p.m. on 22 December 2022
Marine Weather Division, National Meteorological Centre, Department of
Meteorology.



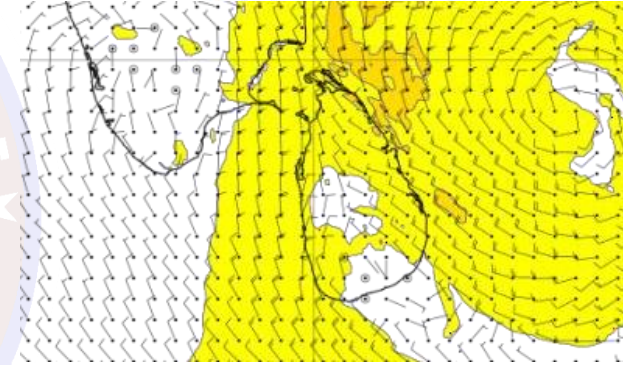
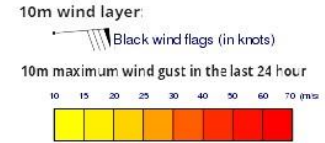
Wind and Rainfall Forecast (Total precipitation for 24 hrs)



Significant wave height (in meters)



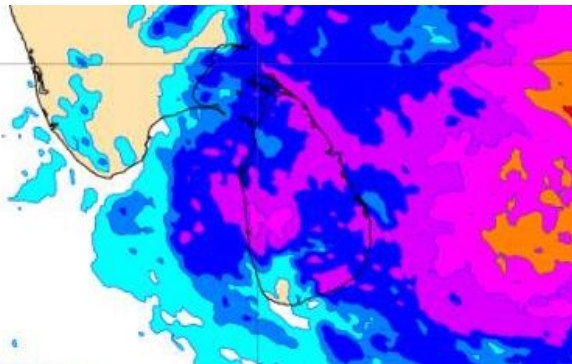
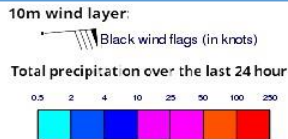
Wind Gust (m/s)



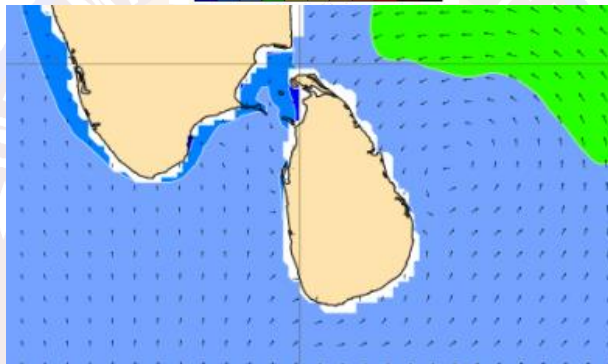
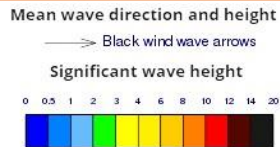
Showers or thundershowers will occur at several places in the sea areas off the coast extending from Kankasanturai to Pottuvil via Trincomalee and Batticaloa.

Wind speed will be 30-40 kmph in the sea areas around the island. The sea areas off the coast extending from Mannar to Pottuvil via Kankasanturai, Trincomalee and Batticaloa can be rough at times as the wind speed can be 55-60 kmph at times.

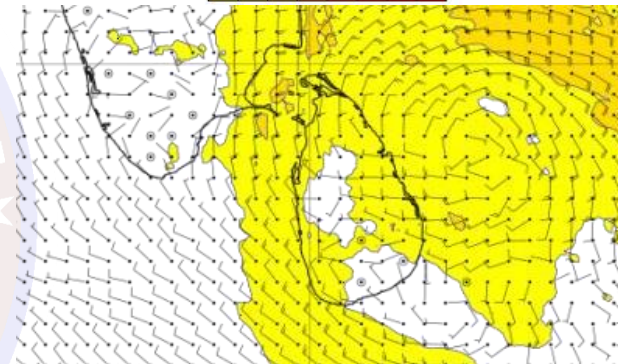
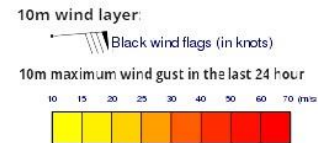
Wind and Rainfall Forecast (Total precipitation for 24 hrs)



Significant wave height (in meters)



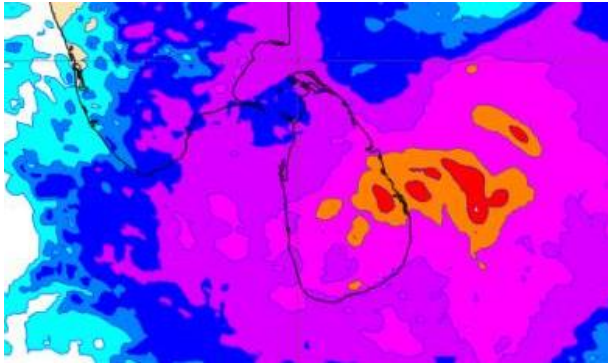
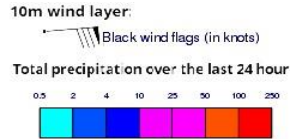
Wind Gust (m/s)



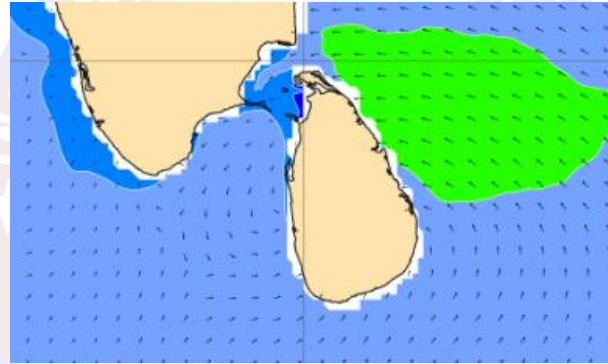
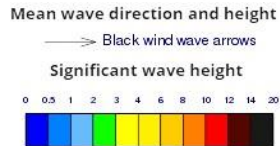
Showers or thundershowers may occur at several places in sea areas around the island.

Wind speed will be 30-40 kmph in the sea areas around the island. The sea areas off the coast extending from Mannar to Pottuvil via Kankasanturai, Trincomalee and Batticaloa can be rough at times as the wind speed can be 55-60 kmph at times.

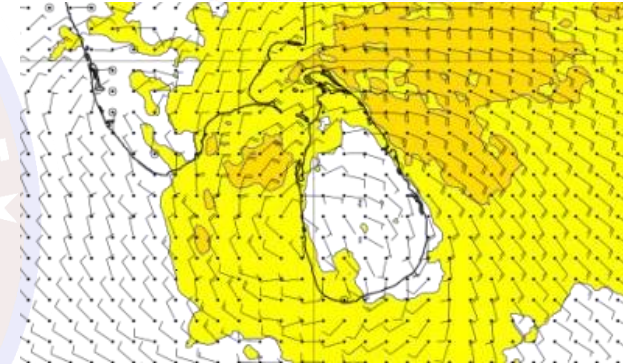
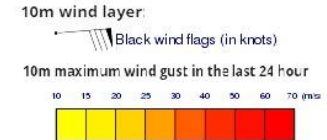
Wind and Rainfall Forecast (Total precipitation for 24 hrs)



Significant wave height (in meters)



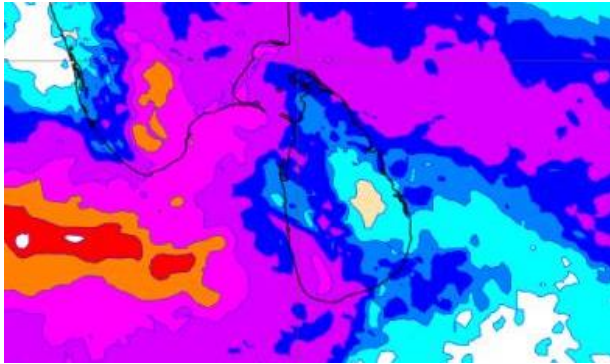
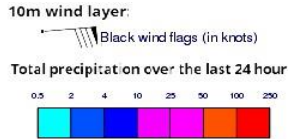
Wind Gust (m/s)



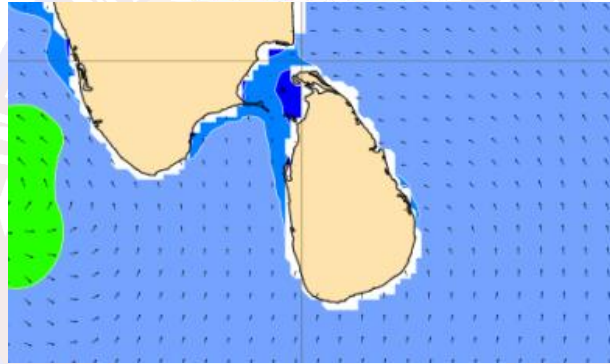
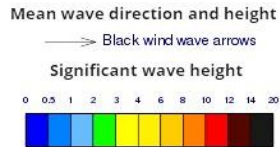
Showers or thundershowers will occur at times in the sea areas around the island and heavy showers can be expected at some places.

Wind speed will be 30-40 kmph in the sea areas around the island. The sea areas off the coast extending from Puttalam to Trincomalee via Mannar & Kankasanturai can be rough at times as the wind speed can be 60 kmph at times. Other sea areas can also be fairly rough as winds can increase up to 50 kmph.

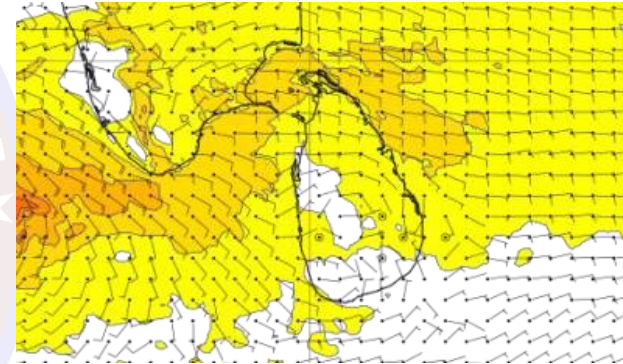
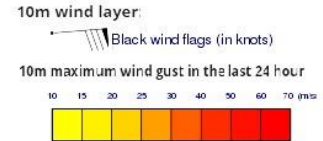
Wind and Rainfall Forecast (Total precipitation for 24 hrs)



Significant wave height (in meters)



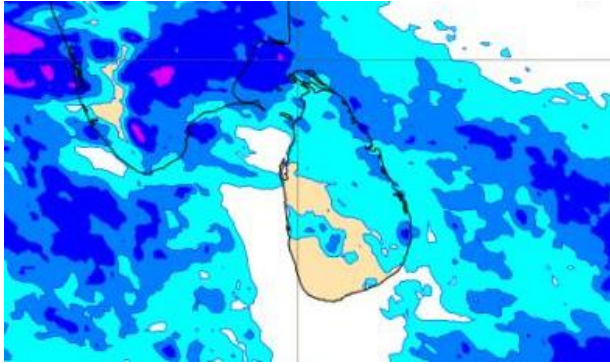
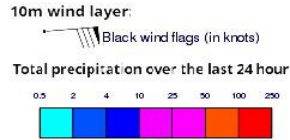
Wind Gust (m/s)



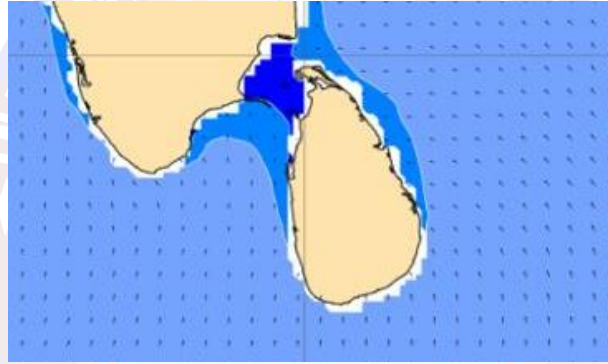
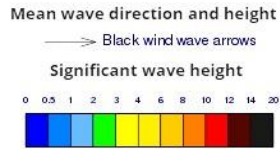
Showers or thundershowers will occur at times in the sea areas around the island.

Wind speed will be 30-40 kmph in the sea areas around the island. The sea areas off the coast extending from Puttalam to Trincomalee via Mannar & Kankasanturai can be rough at times as the wind speed can be 60 kmph at times. Other sea areas can also be fairly rough as winds can increase up to 50 kmph.

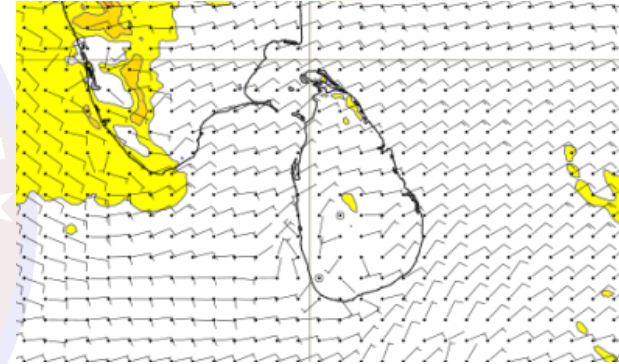
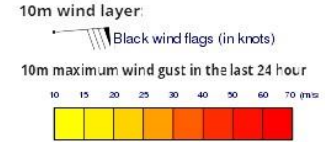
Wind and Rainfall Forecast (Total precipitation for 24 hrs)



Significant wave height (in meters)



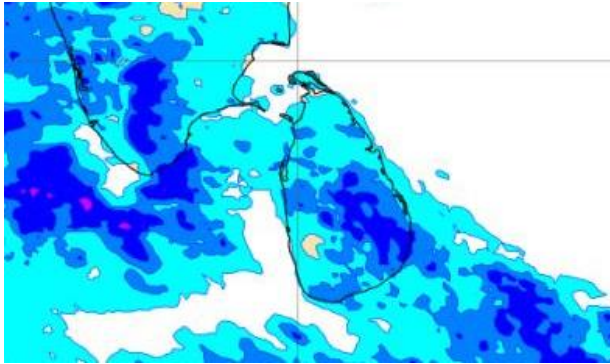
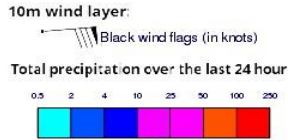
Wind Gust (m/s)



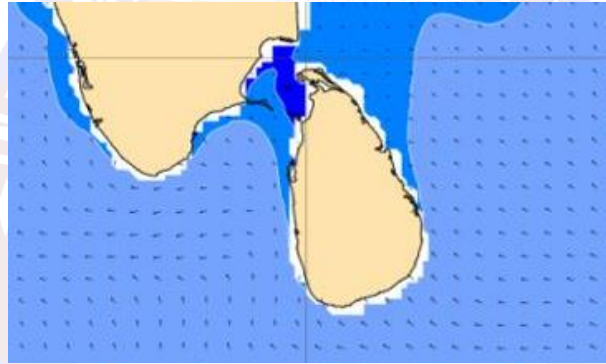
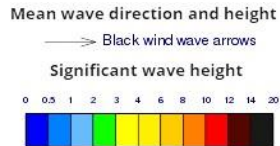
Showers or thundershowers will occur at several places in the sea areas off the coast extending from Mannar to Pottuvil via Kankasanturai, Trincomalee and Batticaloa.

Wind speed will be 25-35 kmph in the sea areas around the island.

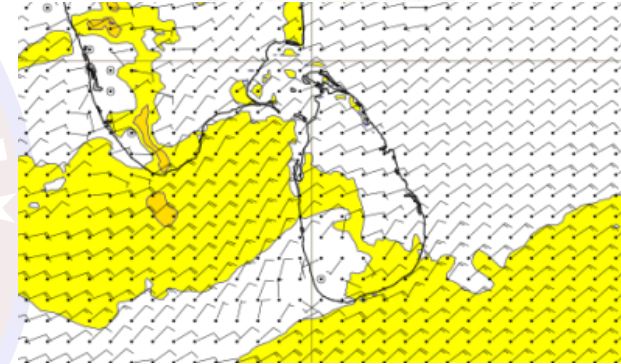
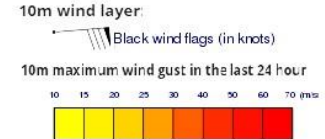
Wind and Rainfall Forecast (Total precipitation for 24 hrs)



Significant wave height (in meters)



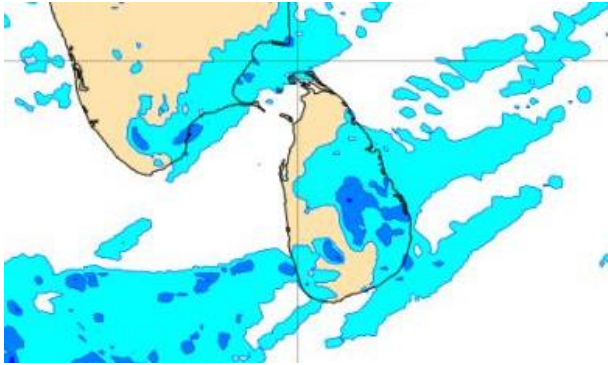
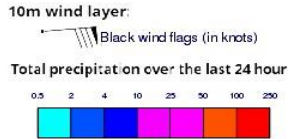
Wind Gust (m/s)



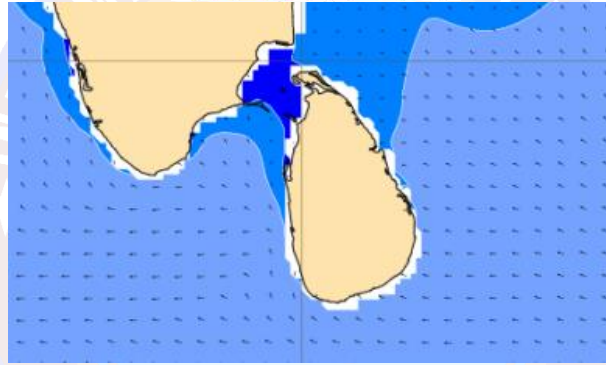
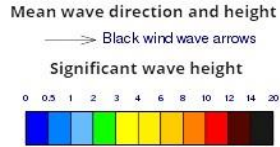
Showers or thundershowers may occur at a few places in sea areas around the island.

Wind speed will be 25-35 kmph in the sea areas around the island. The sea areas off the coast extending from Galle to Pottuvil via Hambantota can be fairly rough at times as the wind speed can be 45 kmph at times.

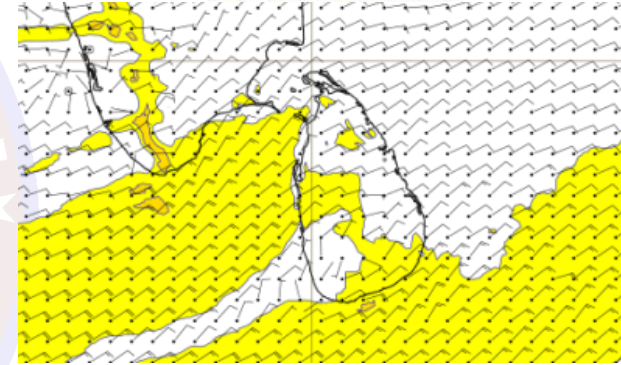
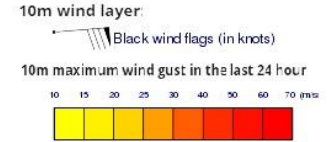
Wind and Rainfall Forecast (Total precipitation for 24 hrs)



Significant wave height (in meters)



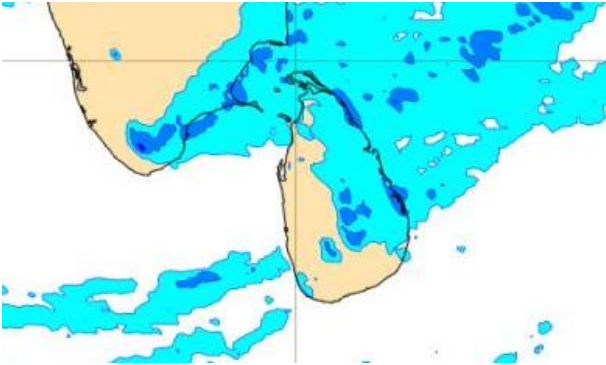
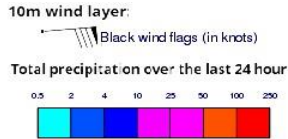
Wind Gust (m/s)



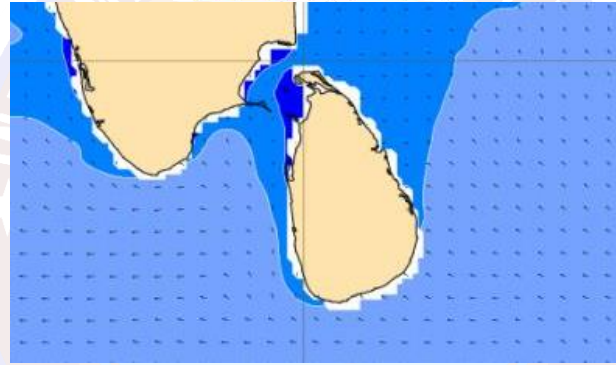
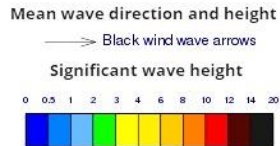
Showers or thundershowers may occur at a few places in sea areas around the island.

Wind speed will be 25-35 kmph in the sea areas around the island. The sea areas off the coast extending from Galle to Pottuvil via Hambantota can be fairly rough at times as the wind speed can be 45 kmph at times.

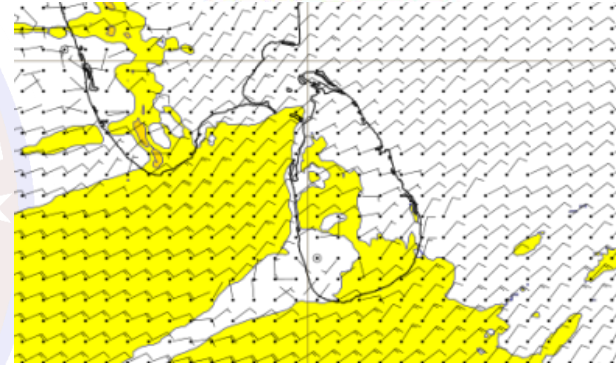
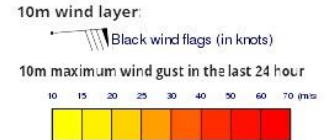
Wind and Rainfall Forecast (Total precipitation for 24 hrs)



Significant wave height (in meters)



Wind Gust (m/s)



Showers or thundershowers will occur at a few places in the sea areas off the coast extending from Mannar to Pottuvil via Kankasanturai, Trincomalee and Batticaloa.

Wind speed will be 25-35 kmph in the sea areas around the island. The sea areas off the coast extending from Galle to Pottuvil via Hambantota can be fairly rough at times as the wind speed can be 45 kmph at times.