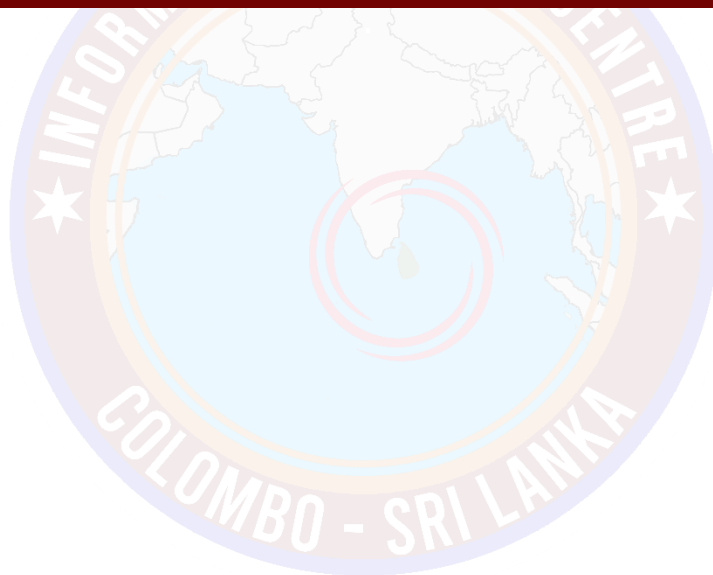




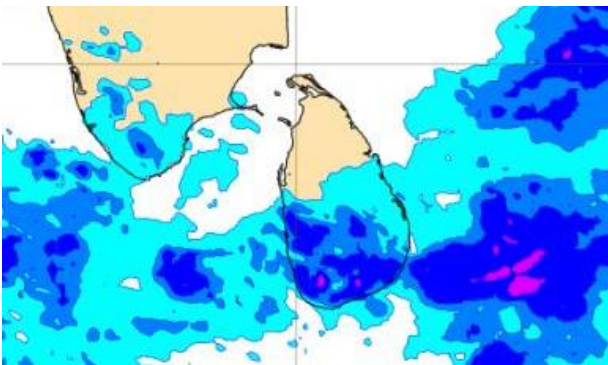
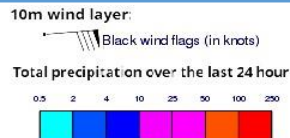
# **INFORMATION FUSION CENTRE COLOMBO**

**8 DAY FORECAST FOR COASTAL AREAS AROUND SRI LANKA**

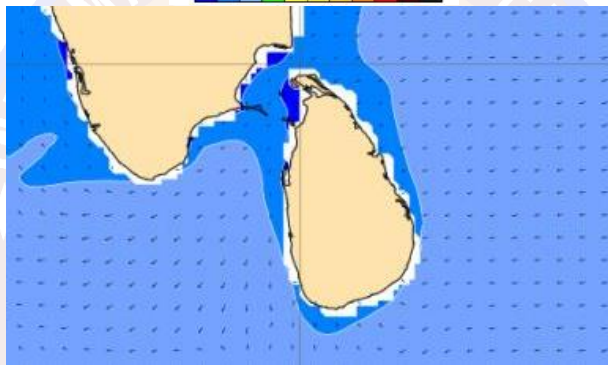
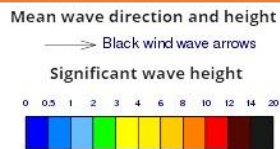
Issued at 10.00 p.m. on 14 December 2022  
Marine Weather Division, National Meteorological Centre, Department of  
Meteorology.



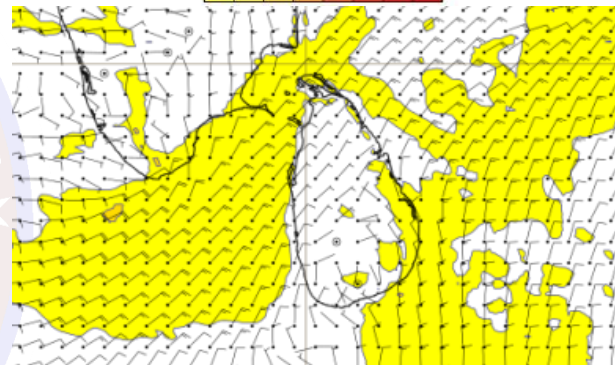
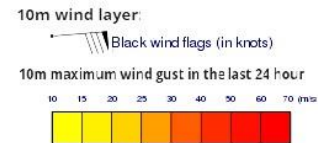
### Wind and Rainfall Forecast (Total precipitation for 24 hrs)



### Significant wave height (in meters)



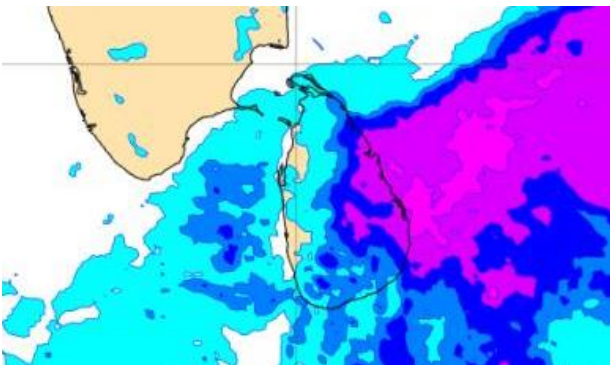
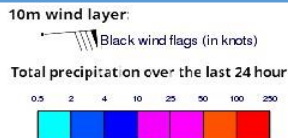
### Wind Gust (m/s)



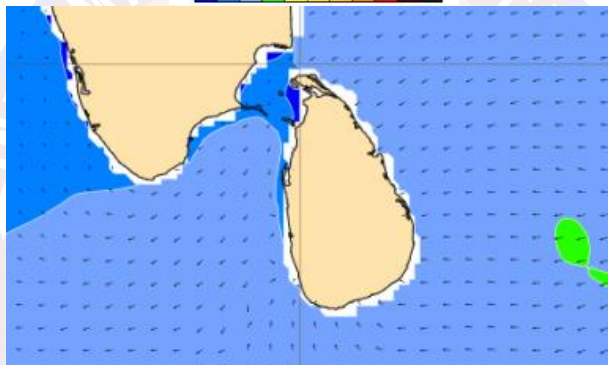
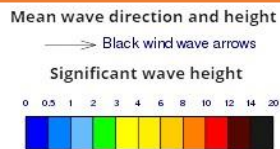
Showers or thundershowers may occur at few places in the sea areas off the coast extending from Puttalam to Pottuvil via Colombo, Galle and Hambantota.

Wind speed will be 25-35 kmph in the sea areas around the island. The sea areas off the coast extending from Mannar to Colombo via Puttalam can be fairly rough at times as the wind speed can be 45 kmph at times.

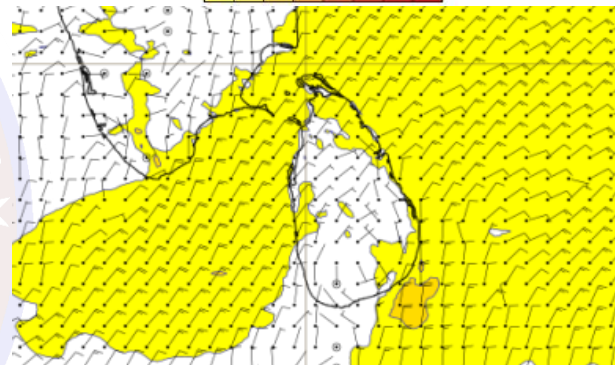
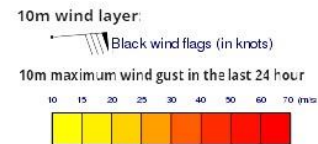
### Wind and Rainfall Forecast (Total precipitation for 24 hrs)



### Significant wave height (in meters)



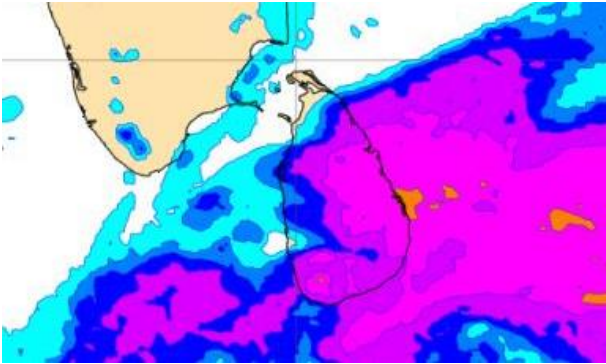
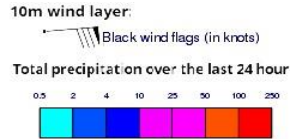
### Wind Gust (m/s)



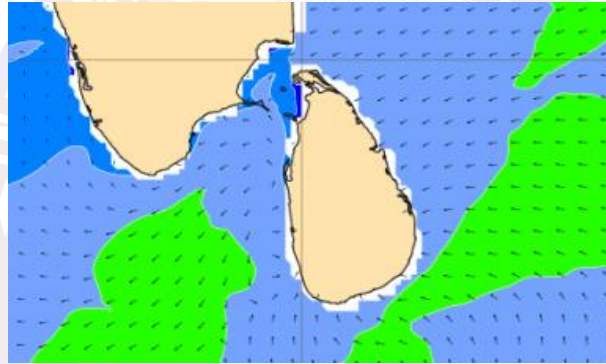
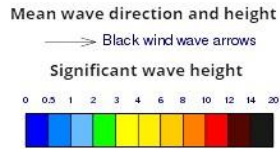
Showers or thundershowers will occur at times in the sea areas off the coast extending from Mullaitivu to Pottuvil via Batticaloa.

Wind speed will be 25-35 kmph in the sea areas around the island. The sea areas off the coast extending from Hambantota to Pottuvil can be fairly rough at times as the wind speed can be 45-50 kmph at times.

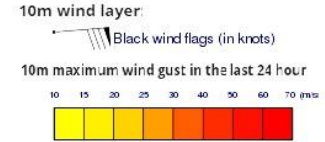
### Wind and Rainfall Forecast (Total precipitation for 24 hrs)



### Significant wave height (in meters)



### Wind Gust (m/s)

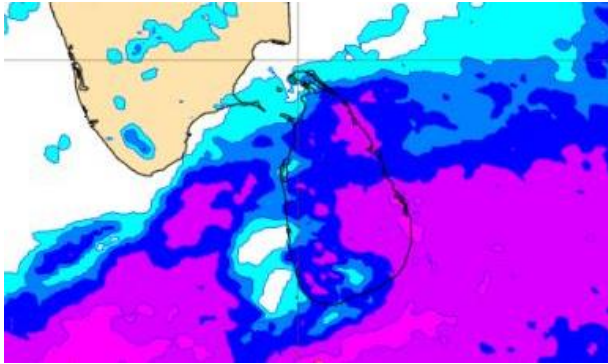
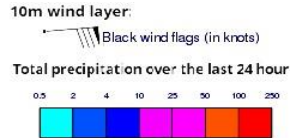


Showers or thundershowers will occur at times in the sea areas off the coast extending from Kankasanturai to Galle via Trincomalee, Pottuvil and Hambantota.

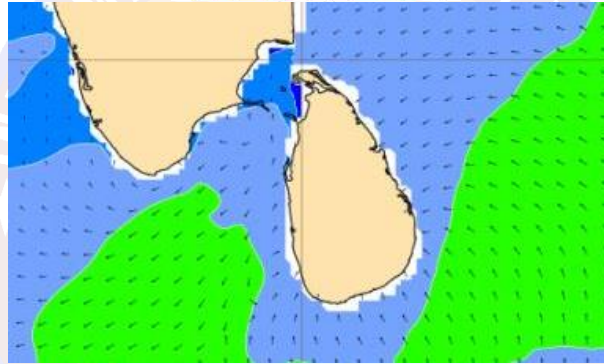
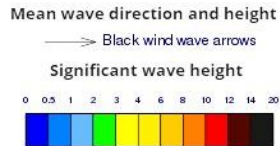
Wind speed will be 30-40 kmph in the sea areas around the island. The sea areas off the coast extending from Hambantota to Pottuvil can be fairly rough at times as the wind speed can be 50 kmph at times.



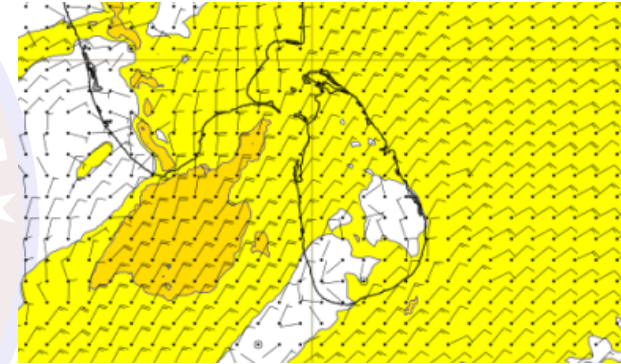
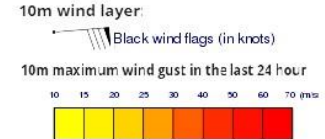
### Wind and Rainfall Forecast (Total precipitation for 24 hrs)



### Significant wave height (in meters)



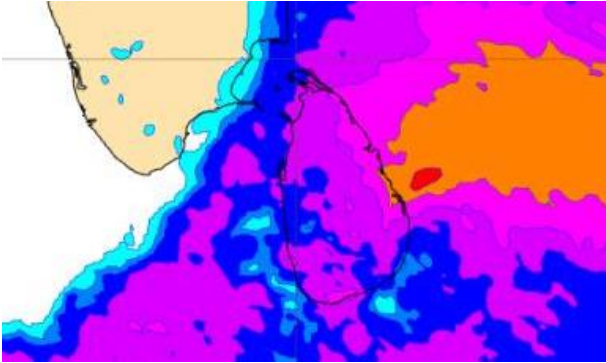
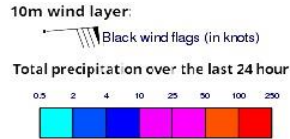
### Wind Gust (m/s)



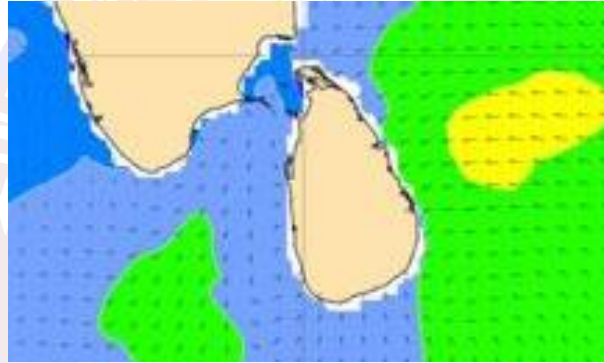
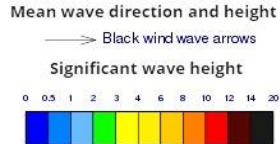
Showers or thundershowers will occur at times in the sea areas off the coast extending from Kankasanturai to Galle via Trincomalee, Pottuvil and Hambantota.

Wind speed will be 30-40 kmph in the sea areas around the island. The sea areas off the coast extending from Mannar to Colombo via Puttalam and from Hambantota to Pottuvil can be fairly rough at times as the wind speed can be 50 kmph at times.

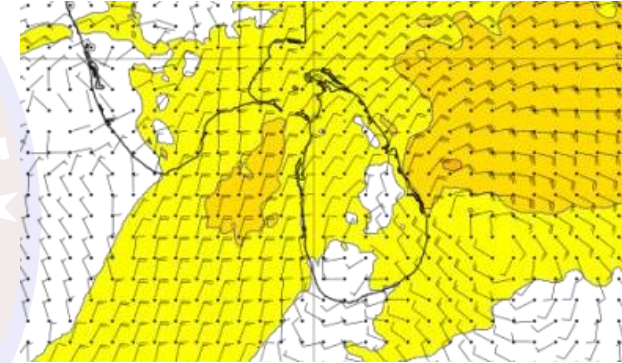
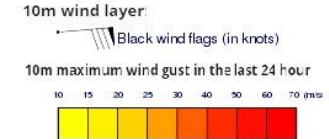
### Wind and Rainfall Forecast (Total precipitation for 24 hrs)



### Significant wave height (in meters)



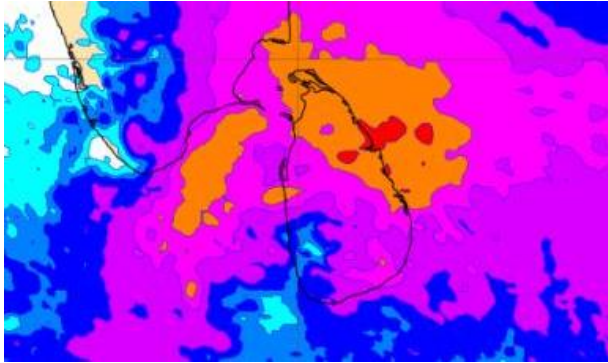
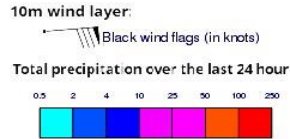
### Wind Gust (m/s)



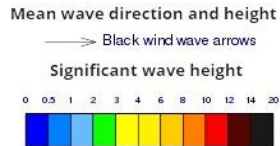
Showers or thundershowers will occur at times in the sea areas off the coast extending from Kankasanturai to Galle via Trincomalee, Pottuvil and Hambantota. Thundershowers may occur at several places in the other sea areas particularly during evening or night.

Winds speed will be 30-40 kmph in the sea areas around the island. The sea areas from Colombo to Batticaloa via Puttalam, Kankasanturai and Trincomalee may be fairly rough at times as wind speed can be 50 kmph at times.

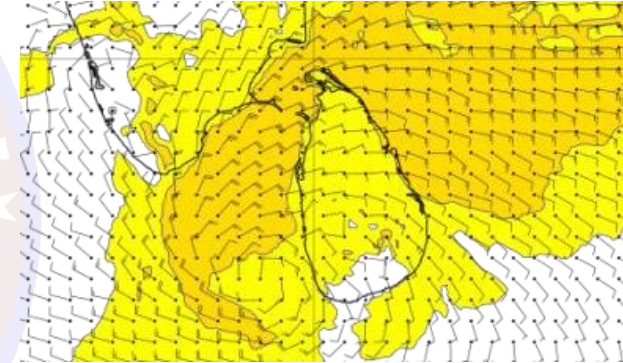
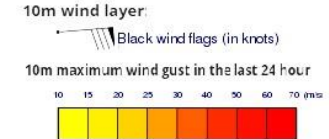
## Wind and Rainfall Forecast (Total precipitation for 24 hrs)



## Significant wave height (in meters)



## Wind Gust (m/s)

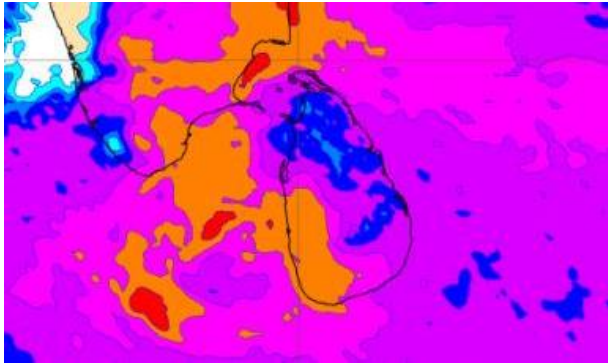
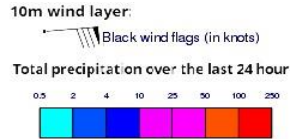


Showers or thundershowers may occur at times places in sea areas around the island.

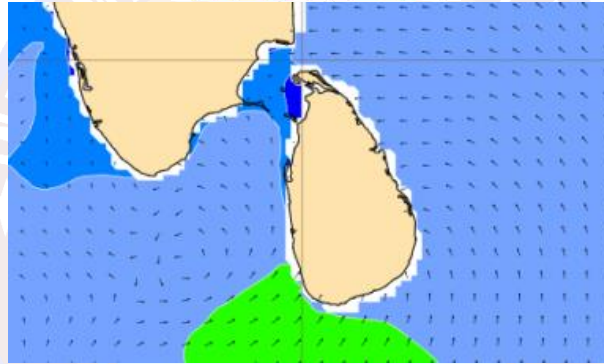
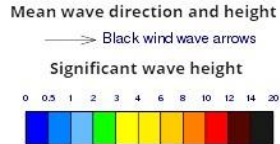
Winds speed will be 30-40 kmph in the sea areas around the island. The sea areas from Colombo to Batticaloa via Puttalam, Kankasanturai and Trincomalee may be rough at times as wind speed can be 50-60 kmph at times.



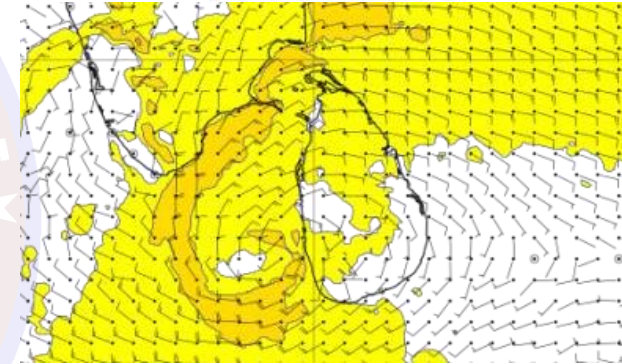
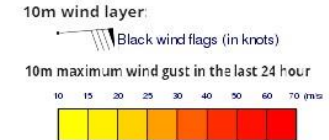
## Wind and Rainfall Forecast (Total precipitation for 24 hrs)



## Significant wave height (in meters)



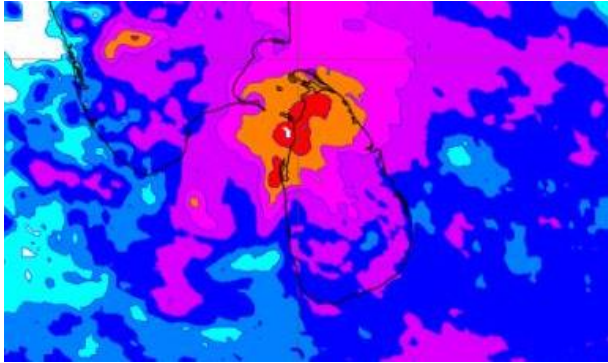
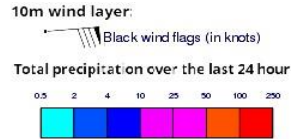
## Wind Gust (m/s)



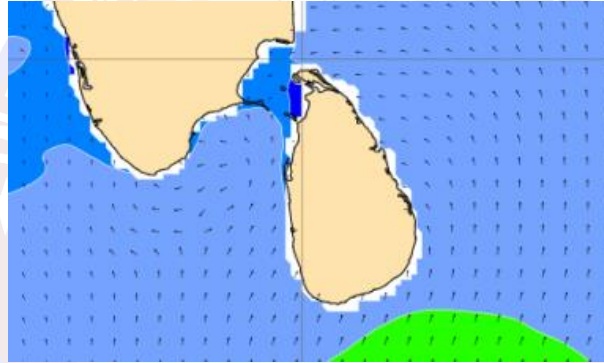
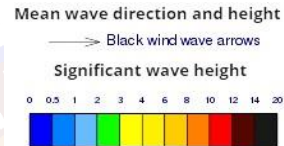
Showers or thundershowers may occur at times places in sea areas around the island.

Winds speed will be 30-40 kmph in the sea areas around the island. The sea areas from Galle to Kankasanturai via Puttalam and Colombo may be fairly rough at times as wind speed can be 50 kmph at times.

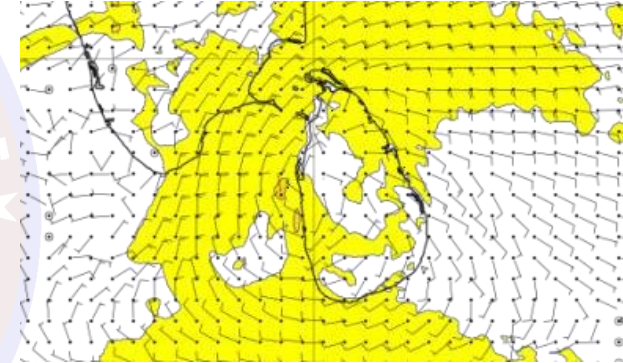
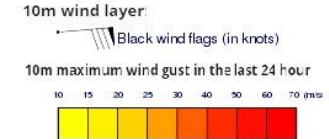
## Wind and Rainfall Forecast (Total precipitation for 24 hrs)



## Significant wave height (in meters)



## Wind Gust (m/s)



Showers or thundershowers may occur at times places in sea areas around the island.  
30-40 kmph in the sea areas around the island.