



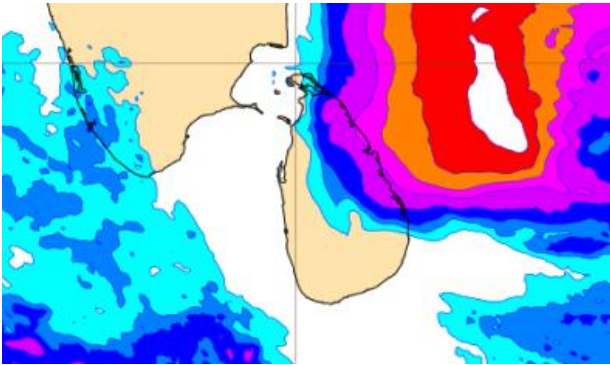
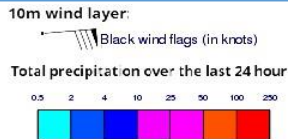
INFORMATION FUSION CENTRE COLOMBO

8 DAY FORECAST FOR COASTAL AREAS AROUND SRI LANKA

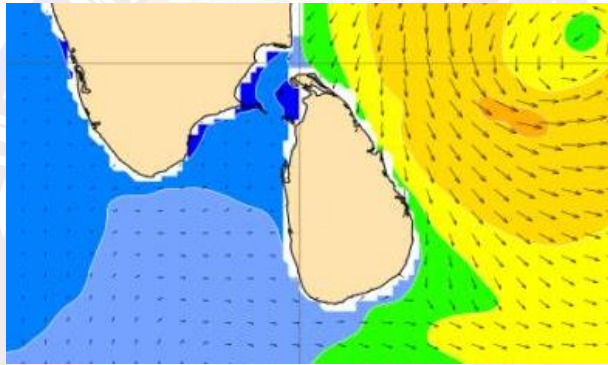
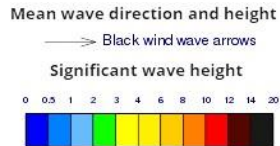
Issued at 10.00 p.m. on 06 December 2022
Marine Weather Division, National Meteorological Centre, Department of
Meteorology.



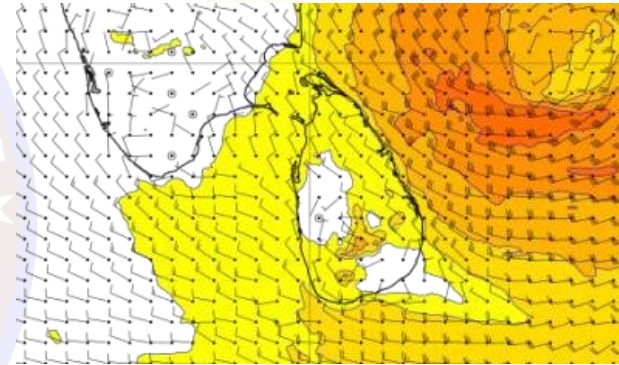
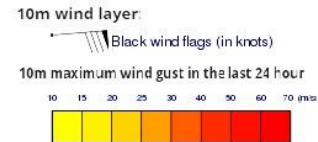
Wind and Rainfall Forecast (Total precipitation for 24 hrs)



Significant wave height (in meters)



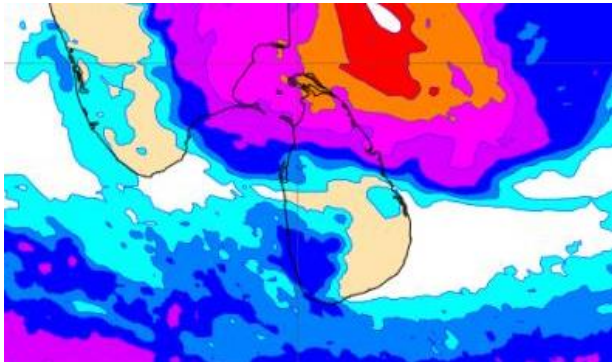
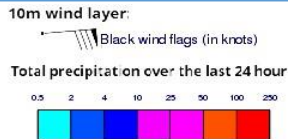
Wind Gust (m/s)



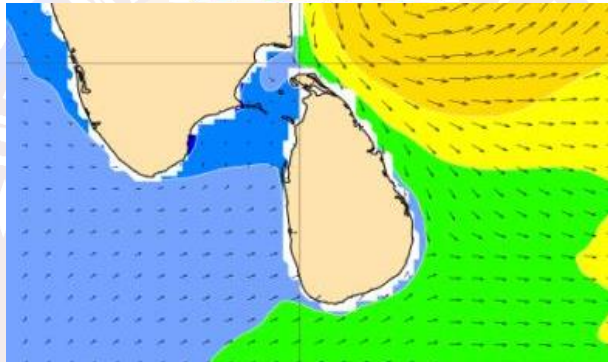
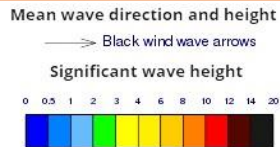
Showers or thundershowers will occur at times in the sea areas off the coast extending from Puttalam to Batticaloa via Kankasanturai and Trincomalee. Heavy falls are likely at some places. Showers or thundershowers will occur in the other sea areas during the afternoon or night.

Wind speed will be 40-50 kmph in the sea areas around the island. The sea areas off the coast extending from Puttalam to Pottuvil via Kankasanturai, Trincomalee and Batticaloa can be very rough at times as the wind speed can be 70-80 kmph at times. Other sea areas can also be rough as winds can be increase up to 50-60 kmph at times.

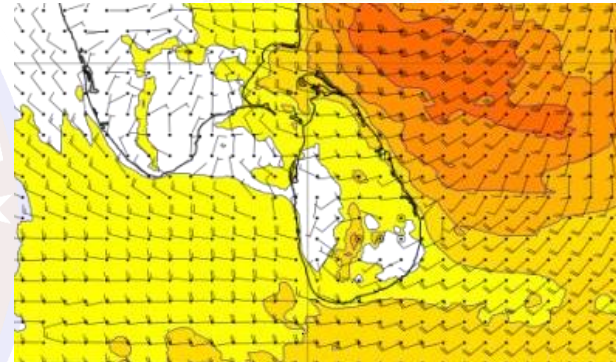
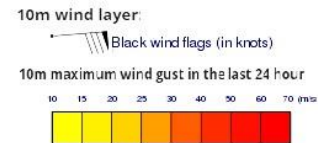
Wind and Rainfall Forecast (Total precipitation for 24 hrs)



Significant wave height (in meters)



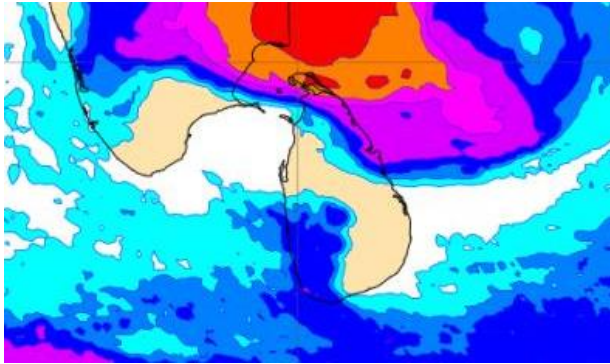
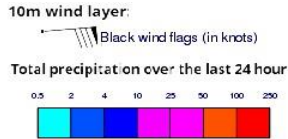
Wind Gust (m/s)



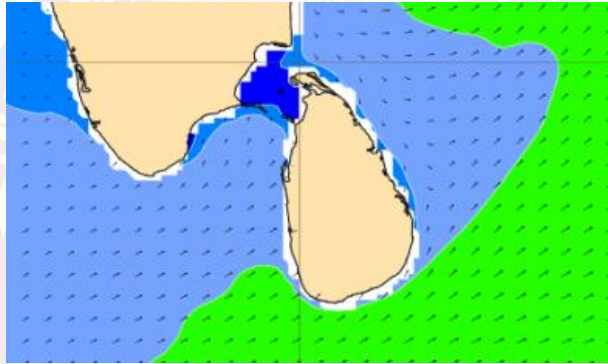
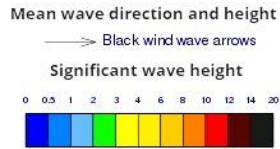
Showers or thundershowers will occur at times in the sea areas off the coast extending from Puttalam to Batticaloa via Kankasanturai and Trincomalee. Heavy falls are likely at some places. Showers or thundershowers will occur in the other sea areas during the afternoon or night.

Wind speed will be 40-50 kmph in the sea areas around the island. The sea areas off the coast extending from Puttalam to Pottuvil via Kankasanturai, Trincomalee and Batticaloa can be very rough at times as the wind speed can be 70-80 kmph at times. Other sea areas can also be rough as winds can be increase up to 50-60 kmph at times.

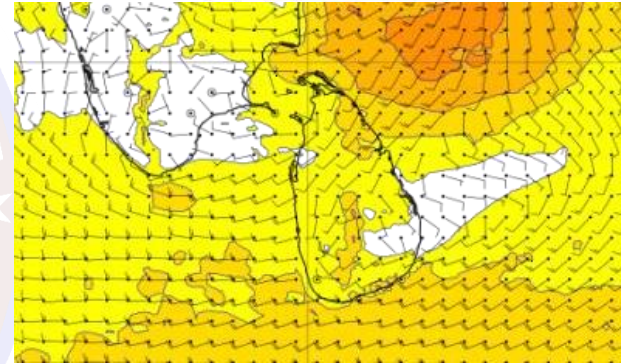
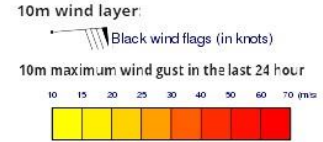
Wind and Rainfall Forecast (Total precipitation for 24 hrs)



Significant wave height (in meters)



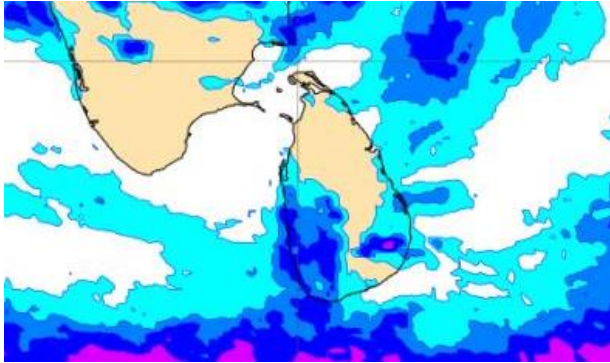
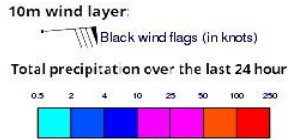
Wind Gust (m/s)



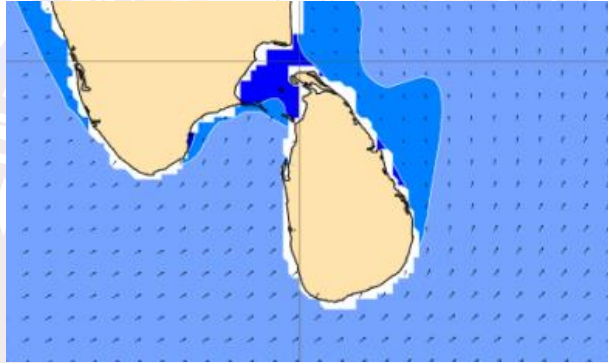
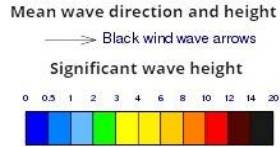
Showers or thundershowers will occur at times in the sea areas off the coast extending from Puttalam to Batticaloa via Kankasanturai and Trincomalee. Very heavy falls are likely at some places. Showers or thundershowers will occur in the other sea areas during the afternoon or night.

Wind speed will be 40-50 kmph in the sea areas around the island. The sea areas off the coast extending from Puttalam to Pottuvil via Kankasanturai, Trincomalee and Batticaloa can be very rough at times as the wind speed can be 70 kmph at times. Other sea areas can also be rough as winds can be increase up to 60 kmph at times.

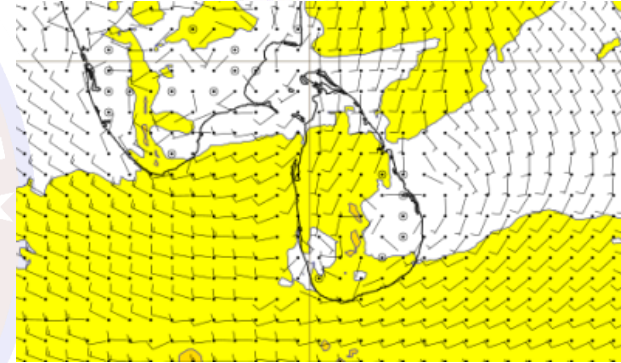
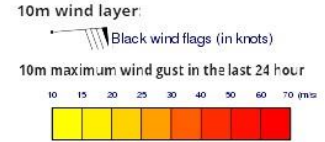
Wind and Rainfall Forecast (Total precipitation for 24 hrs)



Significant wave height (in meters)

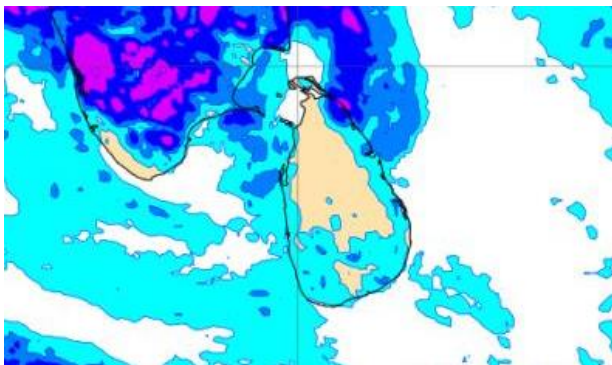
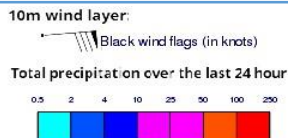


Wind Gust (m/s)

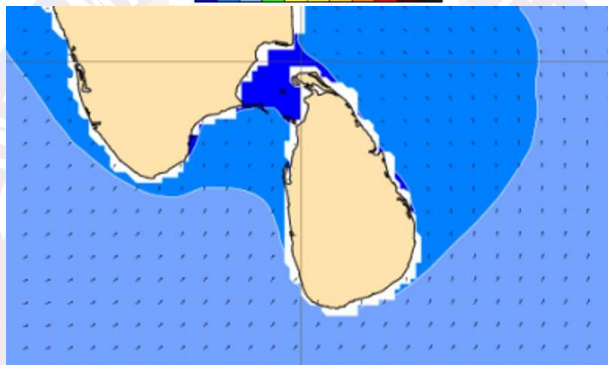
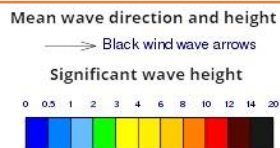


Showers or thundershowers may occur at several places in sea areas around the island in the evening or night.
Wind speed will be 30-40 kmph in the sea areas around the island.

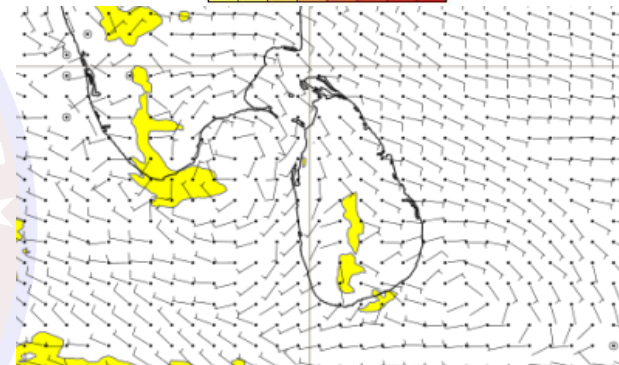
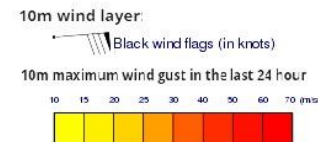
Wind and Rainfall Forecast (Total precipitation for 24 hrs)



Significant wave height (in meters)

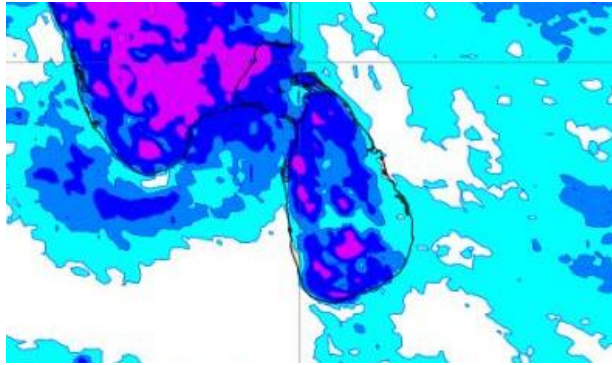
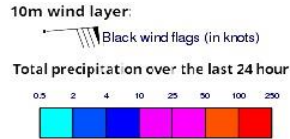


Wind Gust (m/s)

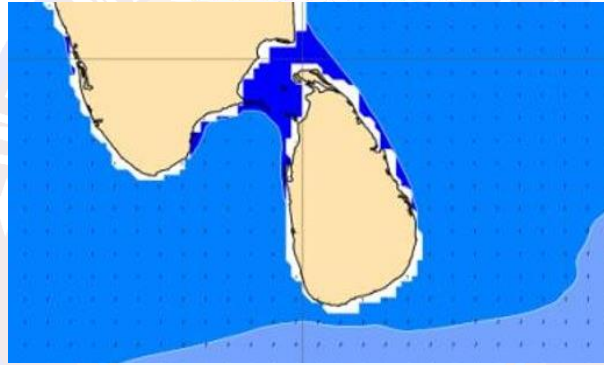
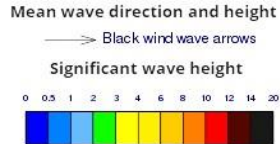


Showers or thundershowers may occur at several places in sea areas around the island in the evening or night.
Wind speed will be 30-40 kmph in the sea areas around the island.

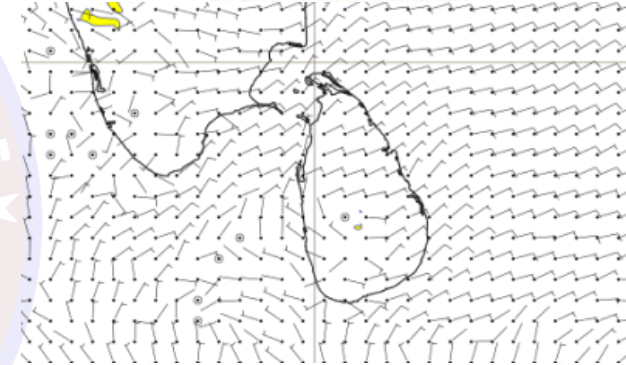
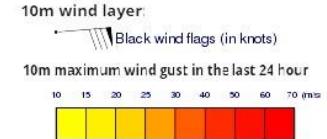
Wind and Rainfall Forecast (Total precipitation for 24 hrs)



Significant wave height (in meters)

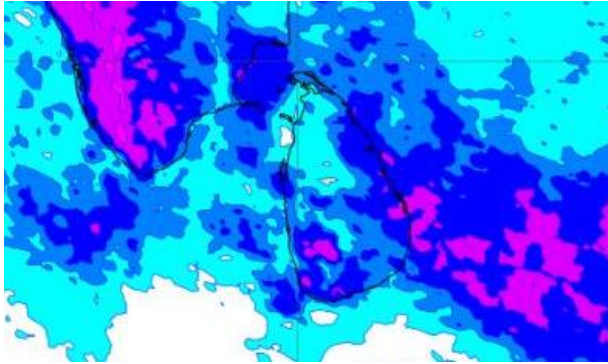
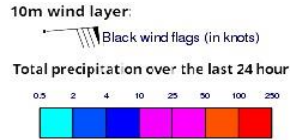


Wind Gust (m/s)

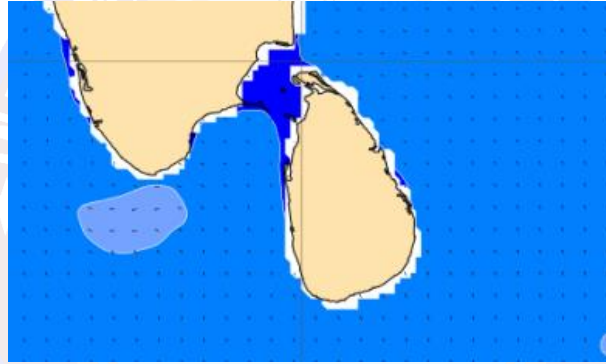
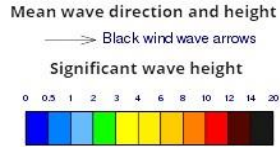


Showers or thundershowers may occur at several places in sea areas around the island in the evening or night.
 Wind speed will be 30-40 kmph in the sea areas around the island.

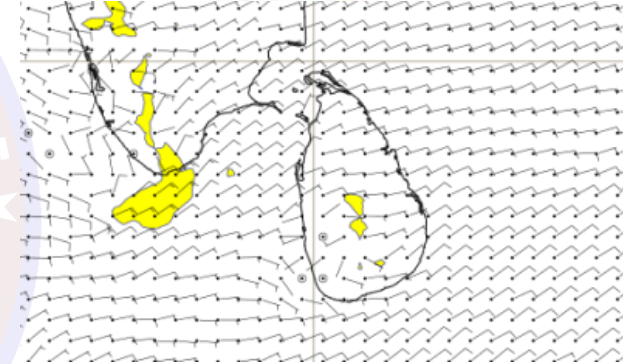
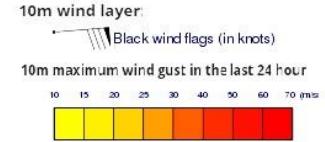
Wind and Rainfall Forecast (Total precipitation for 24 hrs)



Significant wave height (in meters)



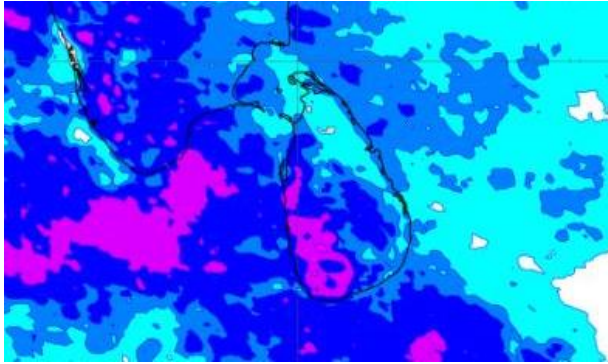
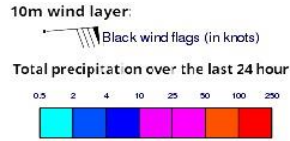
Wind Gust (m/s)



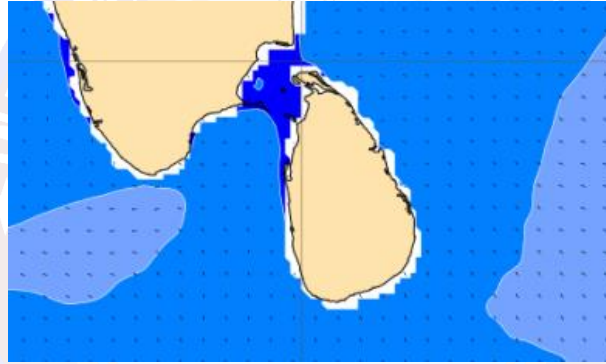
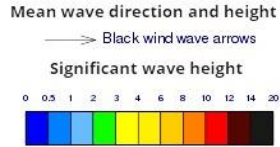
Showers or thundershowers may occur at a few places in sea areas around the island in the evening or night.

Wind speed will be 20-30 kmph in the sea areas around the island.

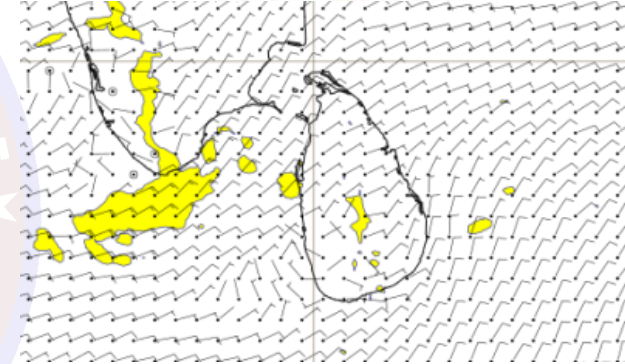
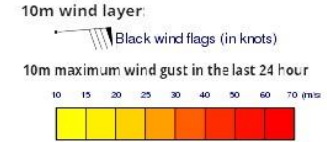
Wind and Rainfall Forecast (Total precipitation for 24 hrs)



Significant wave height (in meters)



Wind Gust (m/s)



Showers or thundershowers may occur at a few places in sea areas around the island in the evening or night
Wind speed will be 20-30 kmph in the sea areas around the island.