



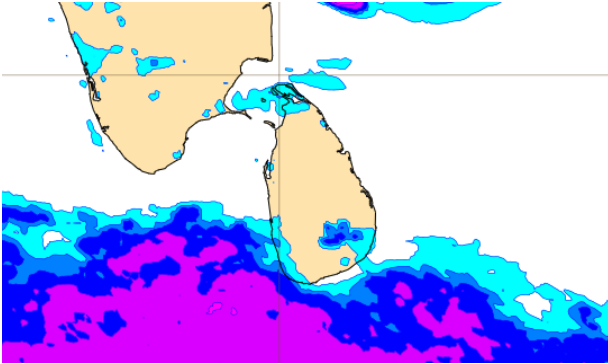
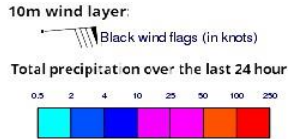
# **INFORMATION FUSION CENTRE COLOMBO**

**8 DAY FORECAST FOR COASTAL AREAS AROUND SRI LANKA**

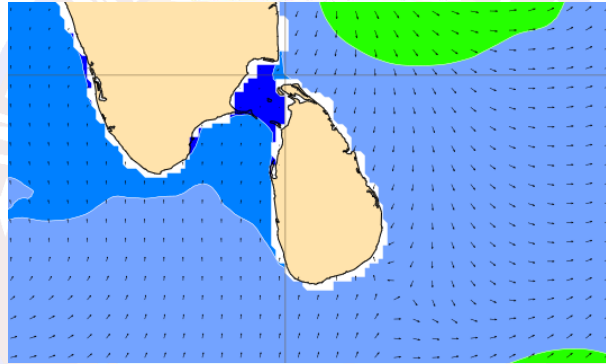
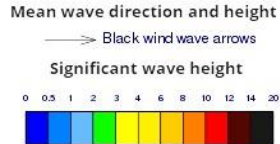
Issued at 10.00 p.m. on 20 November 2022  
Marine Weather Division, National Meteorological Centre, Department of  
Meteorology.



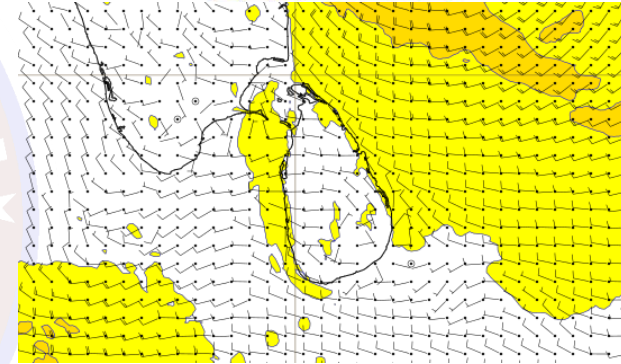
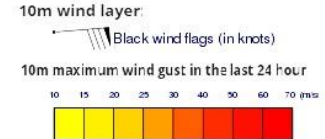
## Wind and Rainfall Forecast (Total precipitation for 24 hrs)



## Significant wave height (in meters)



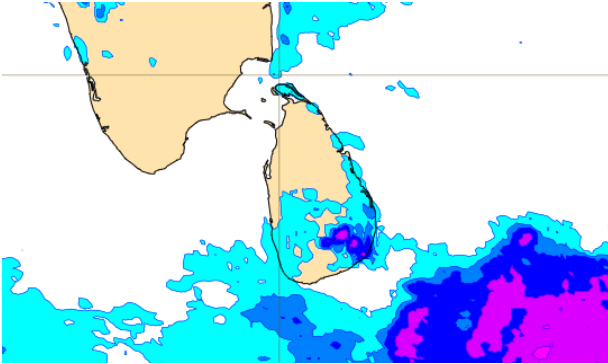
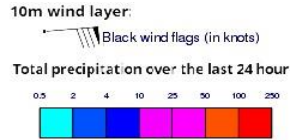
## Wind Gust (m/s)



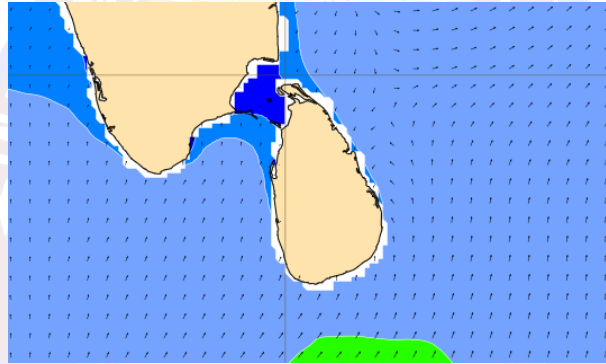
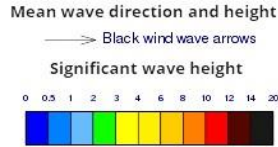
Showers or thundershowers may occur at a few places in sea areas from Galle to Pottuvil via Hambantota.

Wind speed will be 25-35 kmph in the sea areas around the island. The sea areas from Kankasanturai to Pottuvil via Trincomalee and Batticaloa may be rough at times as wind speed can be 50-60 kmph at times. Wind speed may increase up to 40 kmph at times in the other sea areas around the island.

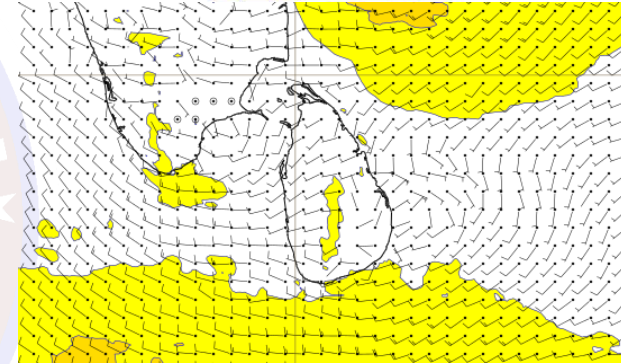
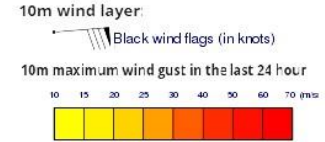
## Wind and Rainfall Forecast (Total precipitation for 24 hrs)



## Significant wave height (in meters)



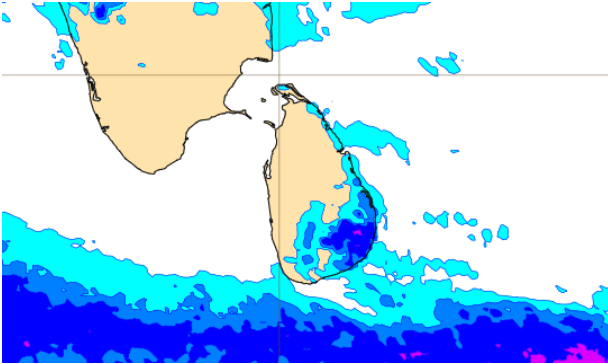
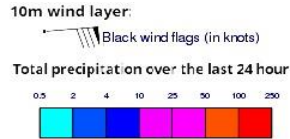
## Wind Gust (m/s)



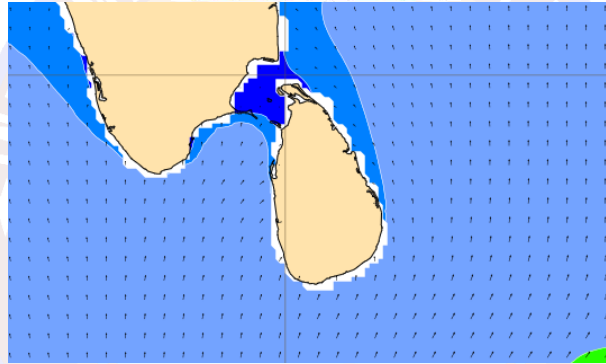
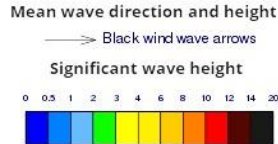
Mainly fair weather will prevail over sea areas around the island.

Wind speed will be 25-35 kmph in the sea areas around the island. The sea areas from Kankasanturai to Batticaloa via Trincomalee and from Galle to Pottuvil via Hambantota may be fairly rough at times as wind speed can be 45-50 kmph at times.

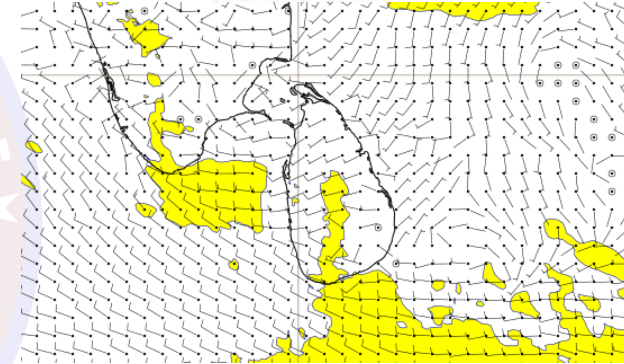
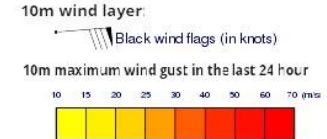
## Wind and Rainfall Forecast (Total precipitation for 24 hrs)



## Significant wave height (in meters)



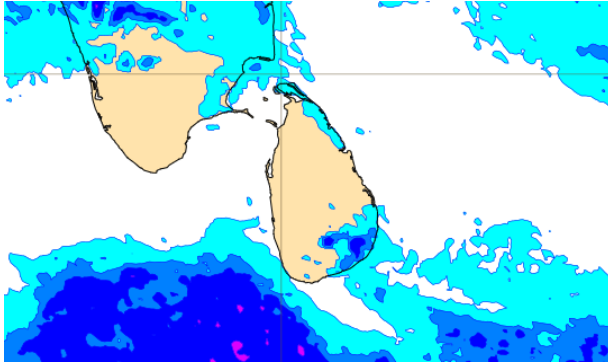
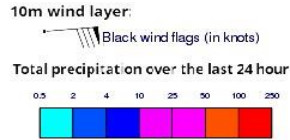
## Wind Gust (m/s)



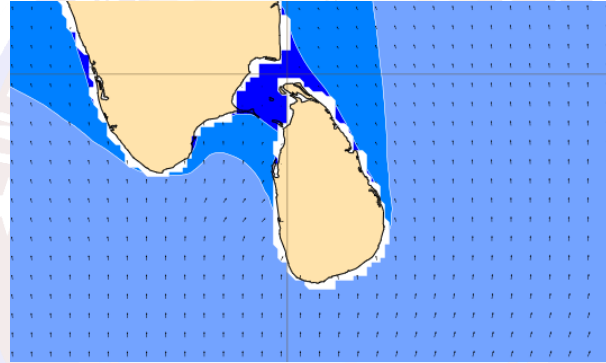
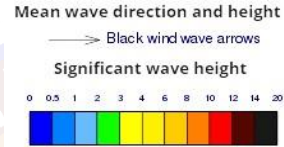
Mainly fair weather will prevail over sea areas around the island.

Wind speed will be 25-35 kmph in the sea areas around the island. The sea areas from Kankasanturai to Batticaloa via Trincomalee and from Galle to Pottuvil via Hambantota may be fairly rough at times as wind speed can be 45kmph at times.

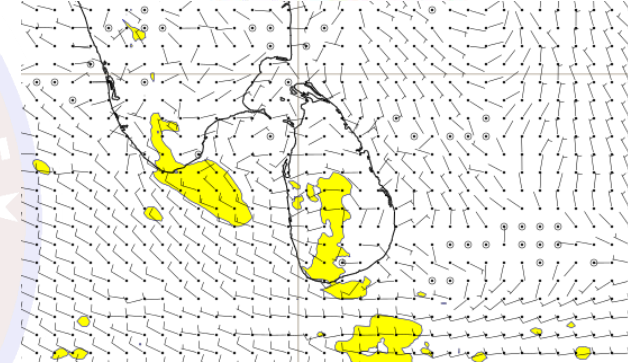
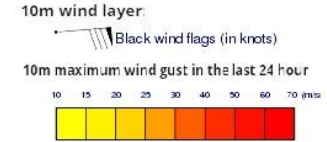
## Wind and Rainfall Forecast (Total precipitation for 24 hrs)



## Significant wave height (in meters)



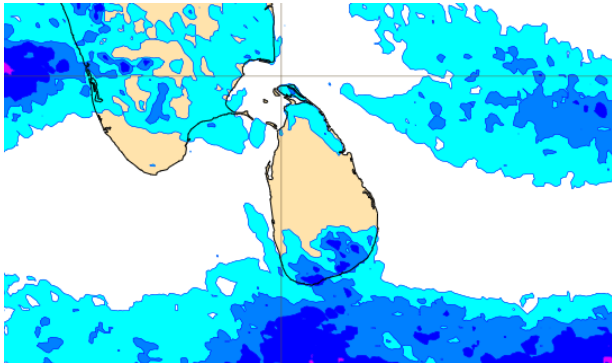
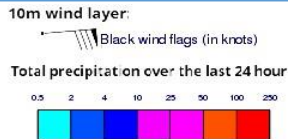
## Wind Gust (m/s)



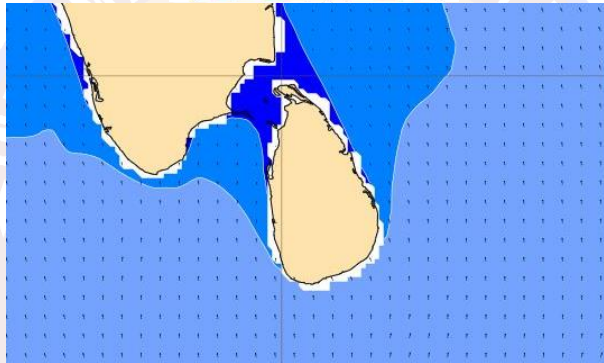
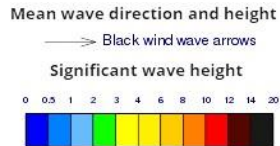
Mainly fair weather will prevail over sea areas around the island.

Wind speed will be 20-30 kmph in the sea areas around the island

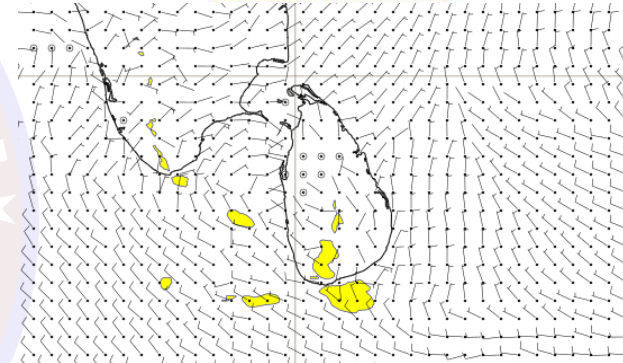
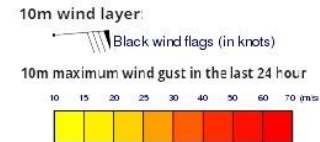
## Wind and Rainfall Forecast (Total precipitation for 24 hrs)



## Significant wave height (in meters)



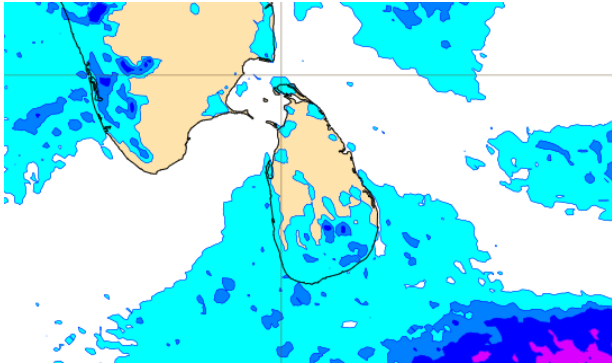
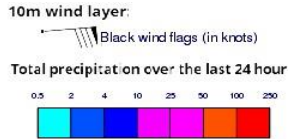
## Wind Gust (m/s)



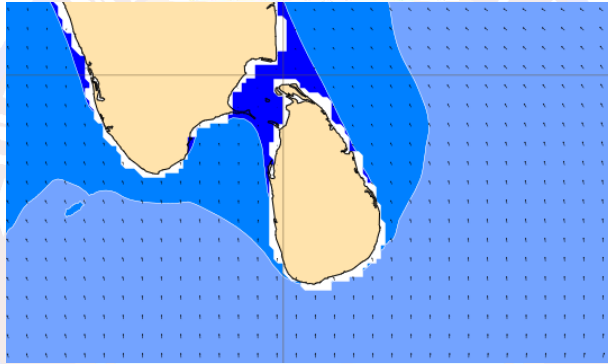
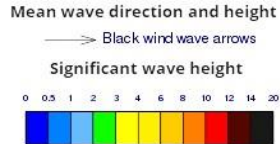
Showers or thundershowers may occur at a few places in sea areas from Galle to Pottuvil via Hambantota.

Wind speed will be 20-30 kmph in the sea areas around the island

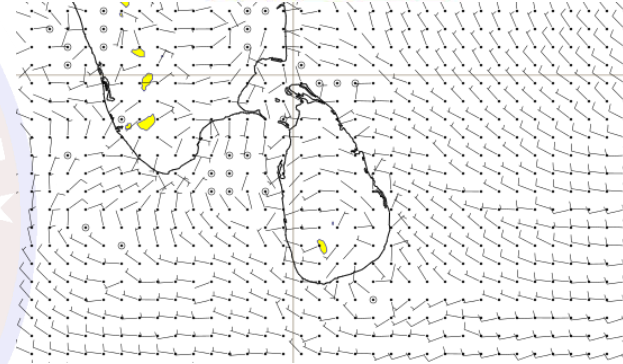
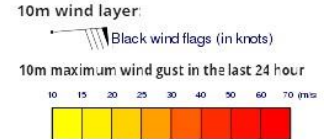
## Wind and Rainfall Forecast (Total precipitation for 24 hrs)



## Significant wave height (in meters)



## Wind Gust (m/s)

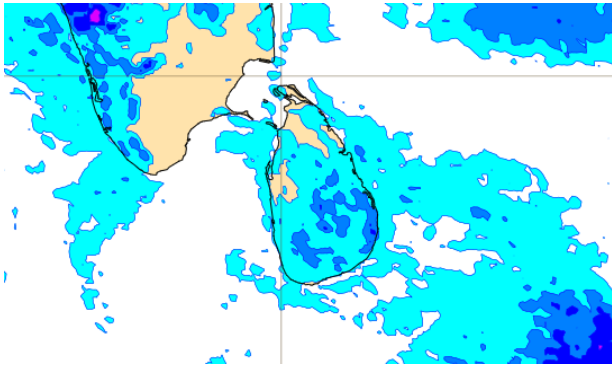
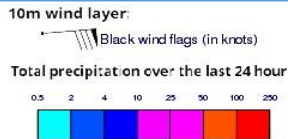


Showers or thundershowers may occur at a few places in sea areas from Galle to Pottuvil via Hambantota.

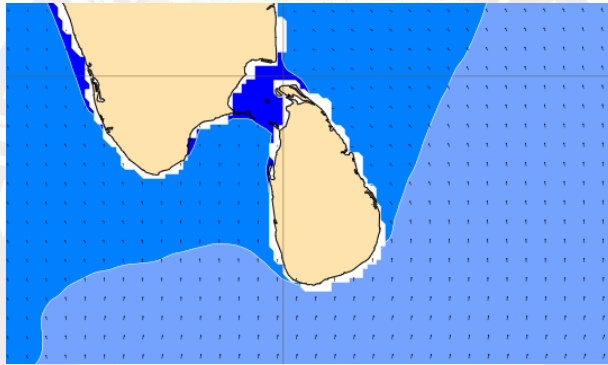
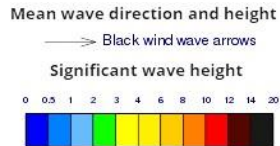
Wind speed will be 20-30 kmph in the sea areas around the island



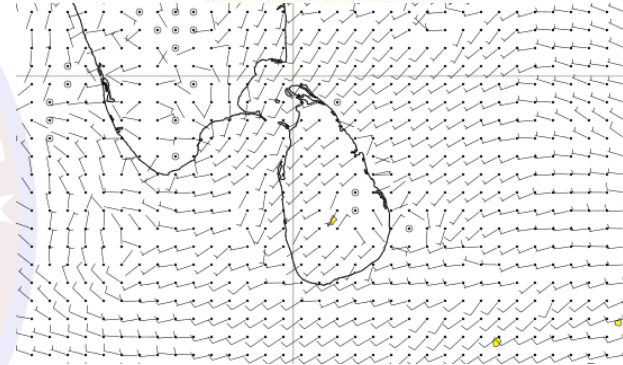
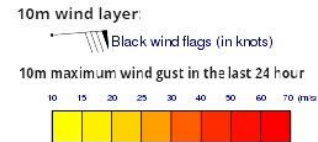
## Wind and Rainfall Forecast (Total precipitation for 24 hrs)



## Significant wave height (in meters)



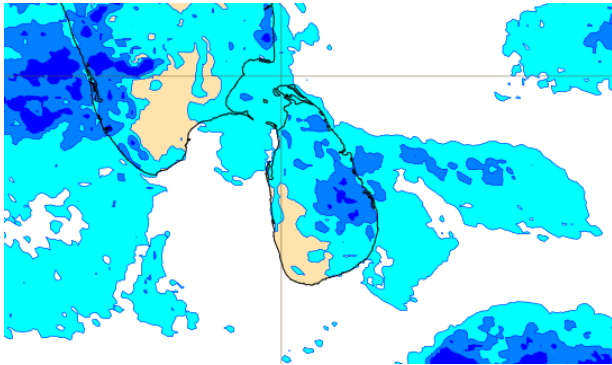
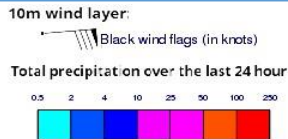
## Wind Gust (m/s)



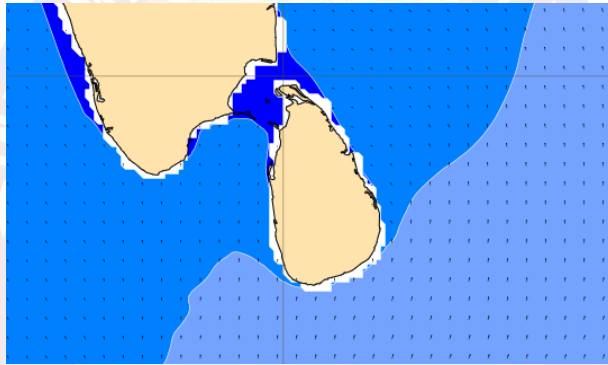
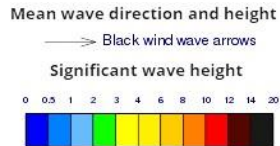
Mainly fair weather will prevail over sea areas around the island.

Wind speed will be 20-30 kmph in the sea areas around the island.

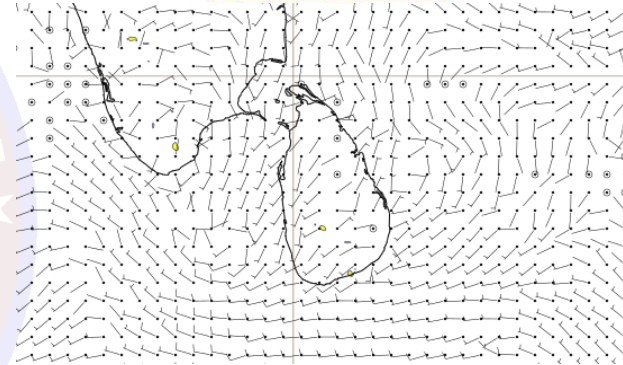
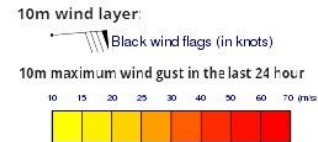
## Wind and Rainfall Forecast (Total precipitation for 24 hrs)



## Significant wave height (in meters)



## Wind Gust (m/s)



Mainly fair weather will prevail over sea areas around the island.

Wind speed will be 20-30 kmph in the sea areas around the island.