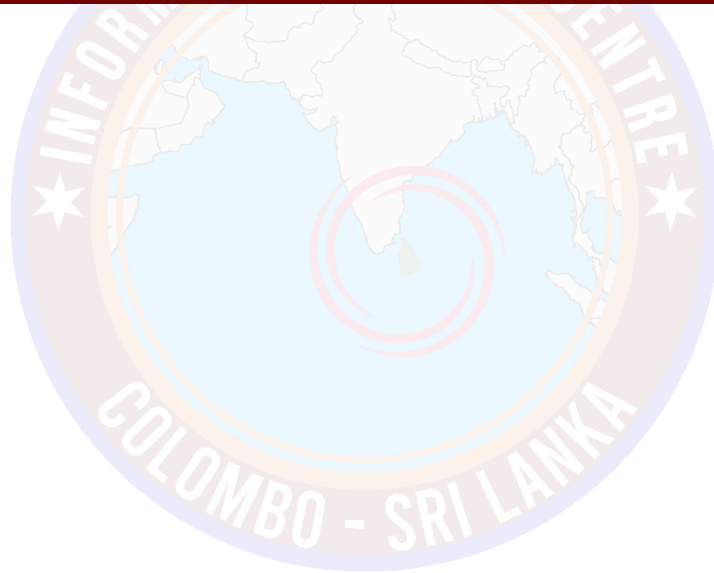




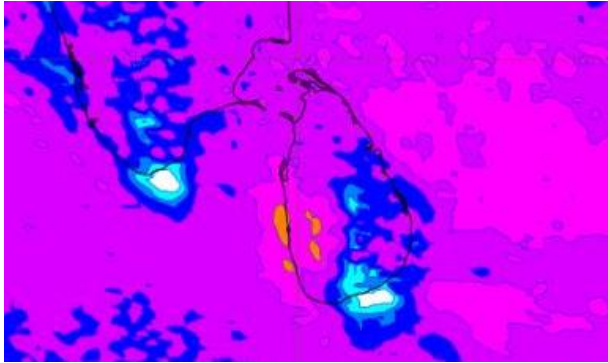
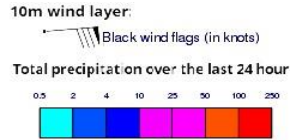
# **INFORMATION FUSION CENTRE COLOMBO**

**8 DAY FORECAST FOR COASTAL AREAS AROUND SRI LANKA**

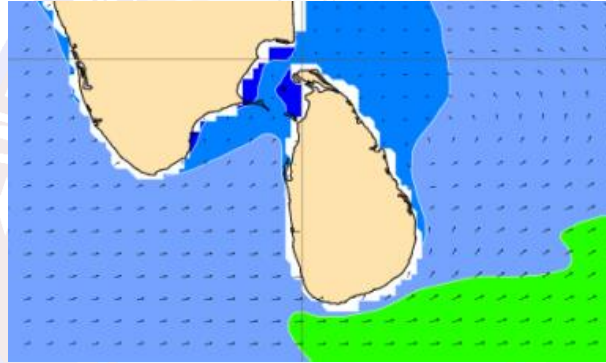
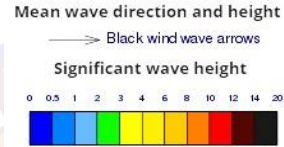
Issued at 10.00 p.m. on 19<sup>th</sup> October 2022  
Marine Weather Division, National Meteorological Centre, Department of  
Meteorology.



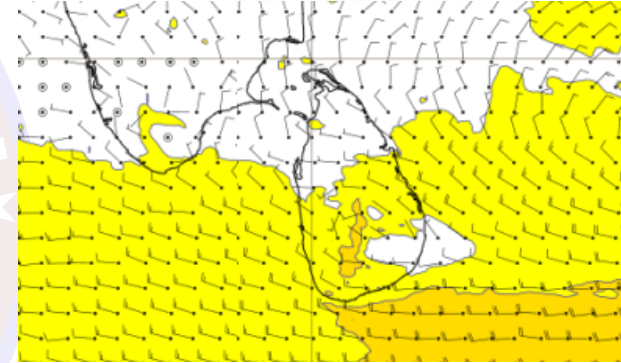
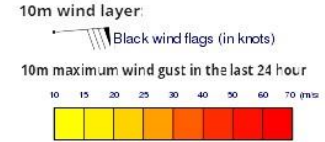
### Wind and Rainfall Forecast (Total precipitation for 24 hrs)



### Significant wave height (in meters)



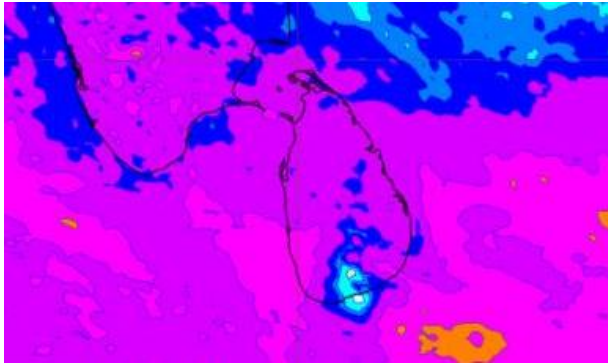
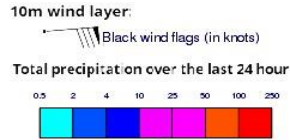
### Wind Gust (m/s)



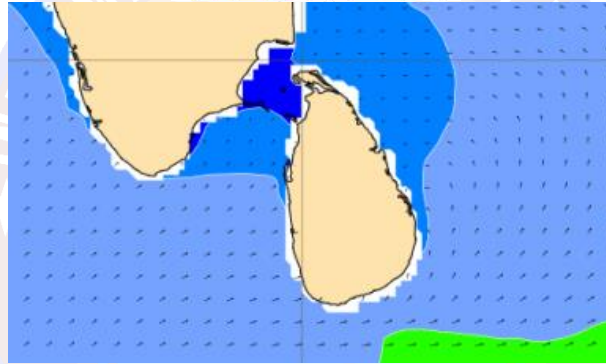
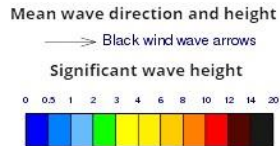
Showers or thundershowers will occur at times in the sea areas off the coast extending from Kankasanthurai to Matara via Mannar, Puttalam & Colombo. Showers or thundershowers may occur at several places in the other sea areas around the island.

Wind speed will be 25-35 kmph in the sea areas around the island. The sea areas extending from Puttalam to Pottuvil via Colombo, Galle & Hambantota can be rough at times as the wind speed can increase up to 45-55 kmph.

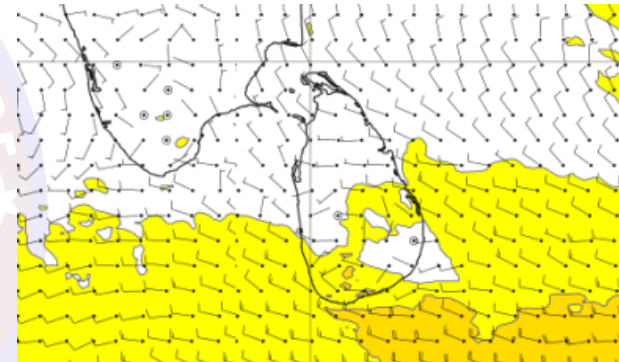
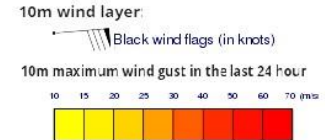
## Wind and Rainfall Forecast (Total precipitation for 24 hrs)



## Significant wave height (in meters)



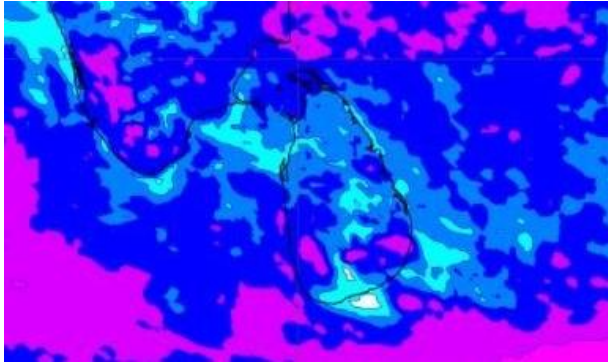
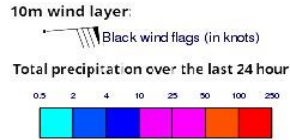
## Wind Gust (m/s)



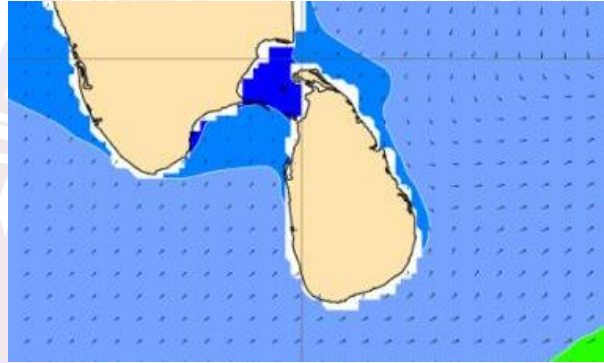
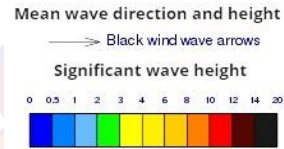
Showers or thundershowers will occur at times in the sea areas off the coast extending from Kankasanthurai, to Matara via Mannar, Puttalam & Colombo and heavy showers can also be expected at some places in these sea areas. Showers or thundershowers may occur at several places in the other sea areas around the island.

Wind speed will be 25-35 kmph in the sea areas around the island. The sea areas extending from Galle to Pottuvil via Hambantota can be rough at times as the wind speed can increase up to 45-55 kmph.

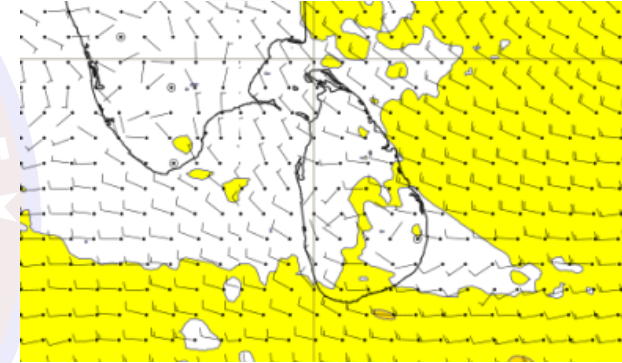
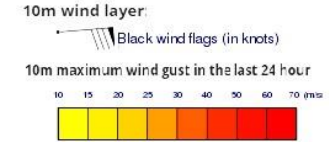
### Wind and Rainfall Forecast (Total precipitation for 24 hrs)



### Significant wave height (in meters)



### Wind Gust (m/s)

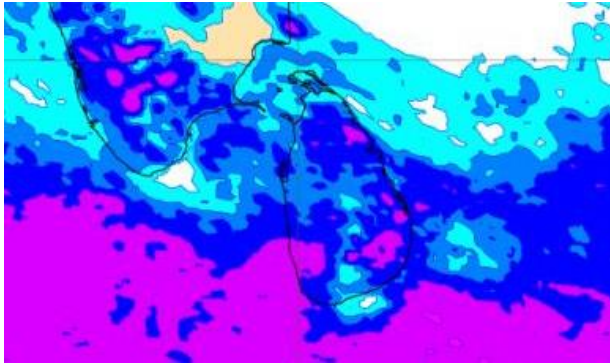
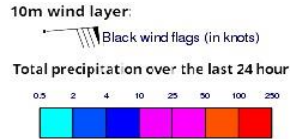


Showers or thundershowers will occur at times in the sea areas off the coast extending from Kankasanthurai, to Matara via Mannar, Puttalam & Colombo and heavy showers can also be expected at some places in these sea areas. Showers or thundershowers may occur at several places in the other sea areas around the island.

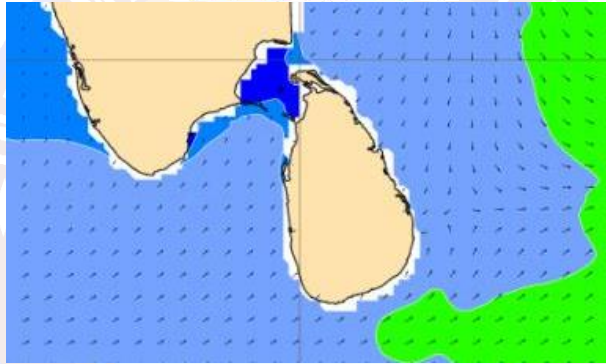
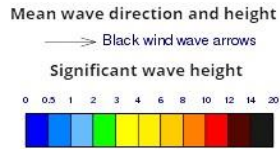
Wind speed will be 25-35 kmph in the sea areas around the island. The sea areas extending from Galle to Pottuvil via Hambantota can be rough at times as the wind speed can increase up to 45-55 kmph.



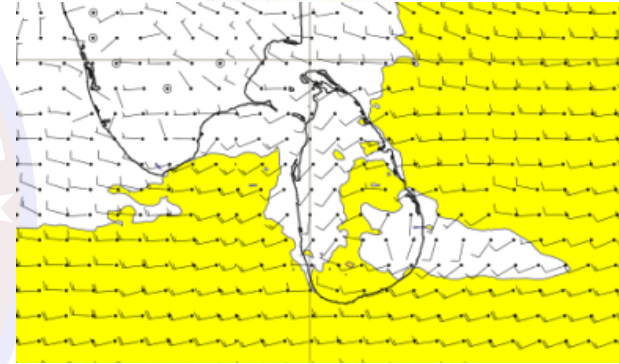
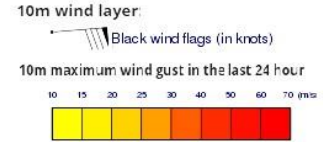
## Wind and Rainfall Forecast (Total precipitation for 24 hrs)



## Significant wave height (in meters)



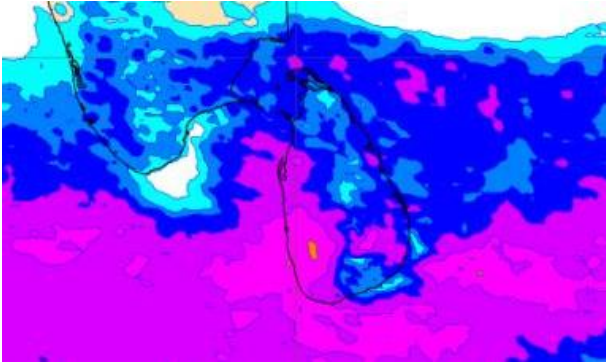
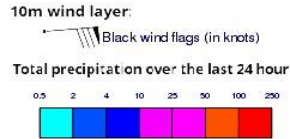
## Wind Gust (m/s)



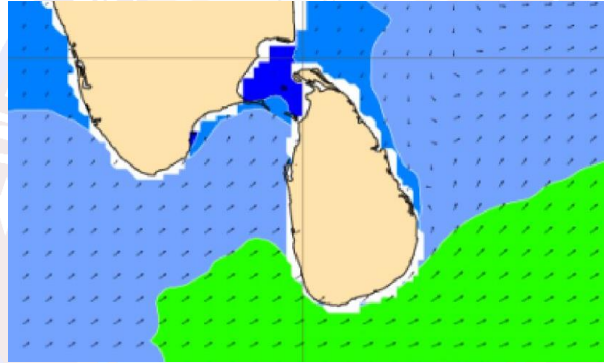
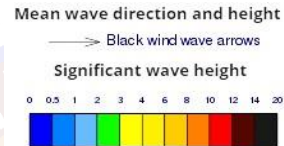
Showers or thundershowers will occur at times in the sea areas off the coast extending from Puttalam to Matara via Colombo. Showers or thundershowers may occur at several places in the other sea areas around the island during the afternoon or night. Heavy showers can also be expected at some places in the sea areas.

Wind speed will be 25-35 kmph in the sea areas around the island. The sea areas extending from Galle to Pottuvil via Hambantota can be rough at times as the wind speed can increase up to 45-55 kmph.

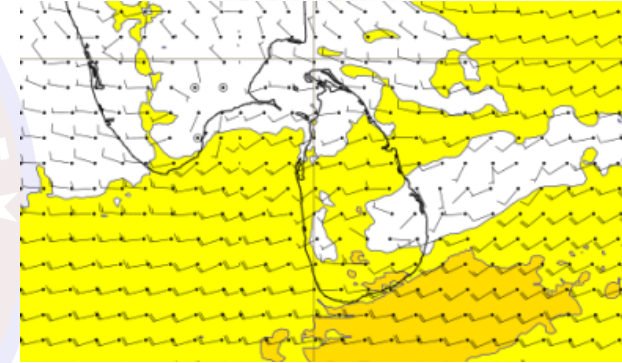
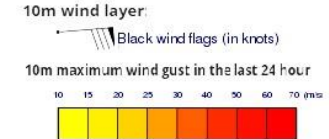
## Wind and Rainfall Forecast (Total precipitation for 24 hrs)



## Significant wave height (in meters)



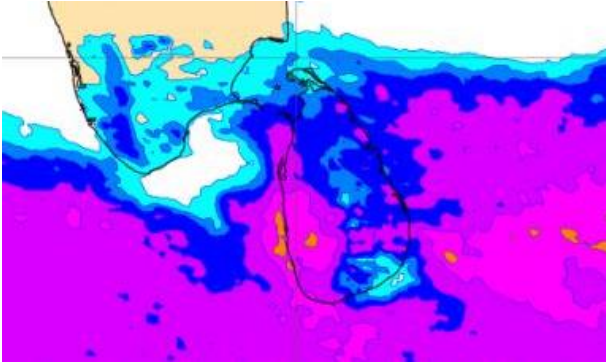
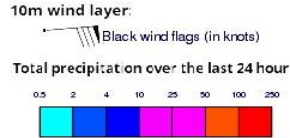
## Wind Gust (m/s)



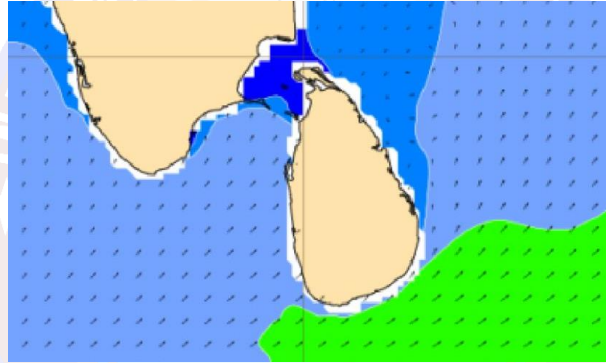
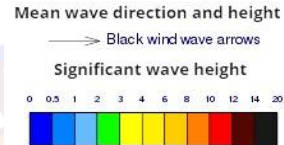
Showers or thundershowers will occur at times in the sea areas off the coast extending from Puttalam to Matara via Colombo. Showers or thundershowers may occur at several places in the other sea areas around the island during the afternoon or night. Heavy showers can also be expected at some places in the sea areas.

Wind speed will be 25-35 kmph in the sea areas around the island. The sea areas extending from Galle to Pottuvil via Hambantota can be rough at times as the wind speed can increase up to 45-55 kmph.

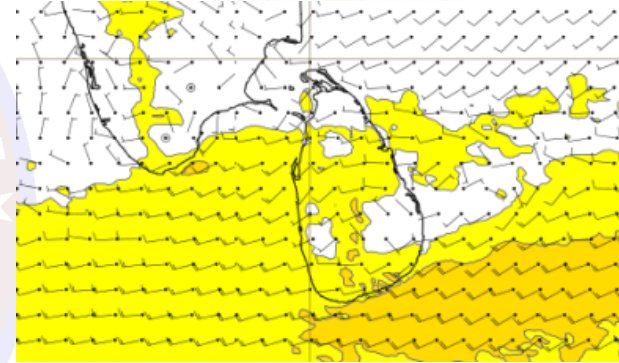
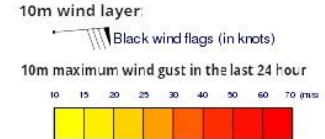
### Wind and Rainfall Forecast (Total precipitation for 24 hrs)



### Significant wave height (in meters)



### Wind Gust (m/s)

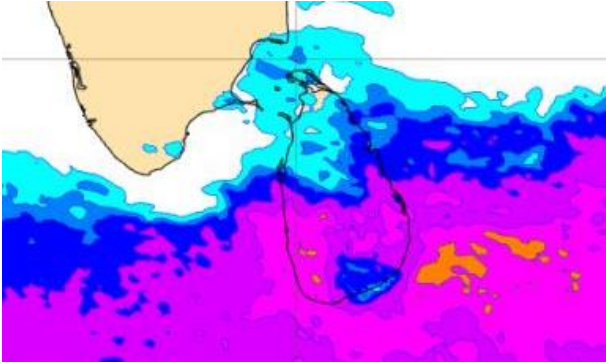
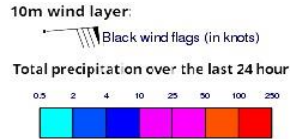


Showers or thundershowers will occur at several places in the sea areas off the coast extending from Puttalam to Matara via Colombo. Showers or thundershowers may occur at several places in the other sea areas around the island during the afternoon or night.

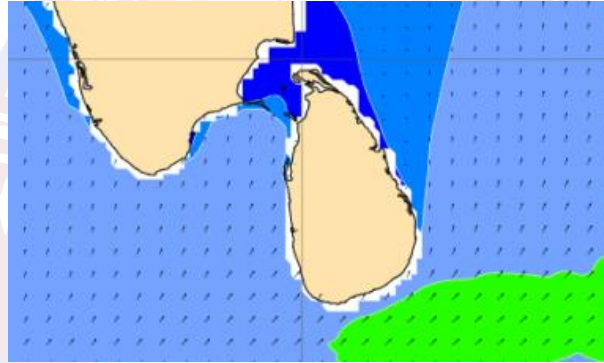
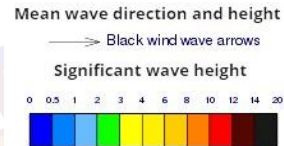
Wind speed will be 25-35 kmph in the sea areas around the island. The sea areas extending from Galle to Pottuvil via Hambantota can be rough at times as the wind speed can increase up to 45-55 kmph.



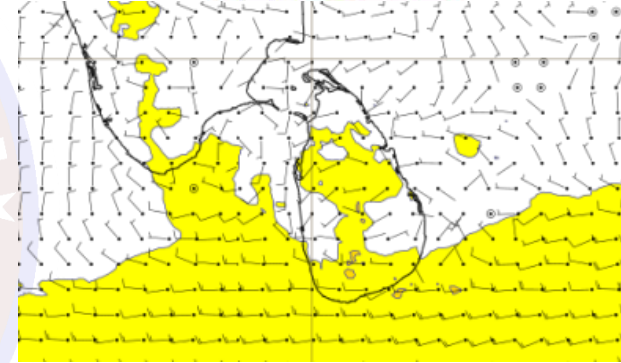
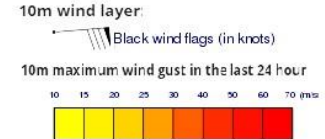
### Wind and Rainfall Forecast (Total precipitation for 24 hrs)



### Significant wave height (in meters)



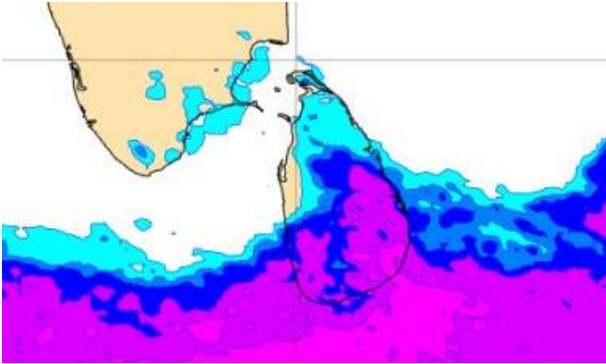
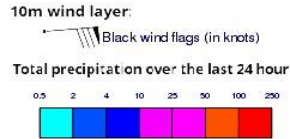
### Wind Gust (m/s)



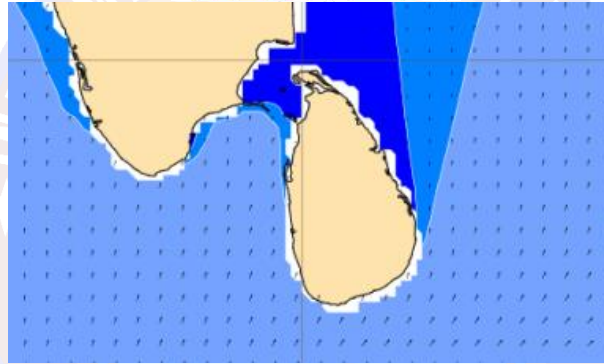
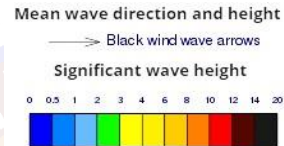
Showers or thundershowers will occur at times in the sea areas off the coast extending from Puttalam to Matara via Colombo. Showers or thundershowers may occur at a few places in the other sea areas around the island during the afternoon or night.

Wind speed will be 25-35 kmph in the sea areas around the island. The sea areas extending from Galle to Pottuvil via Hambantota can be rough at times as the wind speed can increase up to 45-55 kmph.

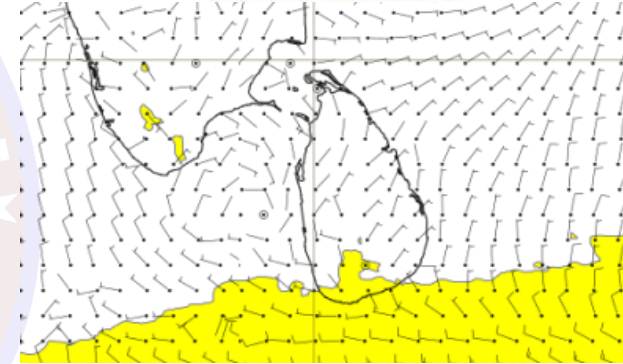
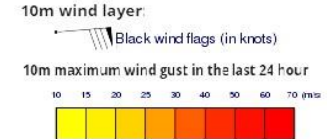
### Wind and Rainfall Forecast (Total precipitation for 24 hrs)



### Significant wave height (in meters)



### Wind Gust (m/s)



Showers or thundershowers will occur at several places in the sea areas off the coast extending from Puttalam to Matara via Colombo.

Wind speed will be 25-35 kmph in the sea areas around the island. The sea areas extending from Galle to Pottuvil via Hambantota can be rough at times as the wind speed can increase up to 45-55 kmph.