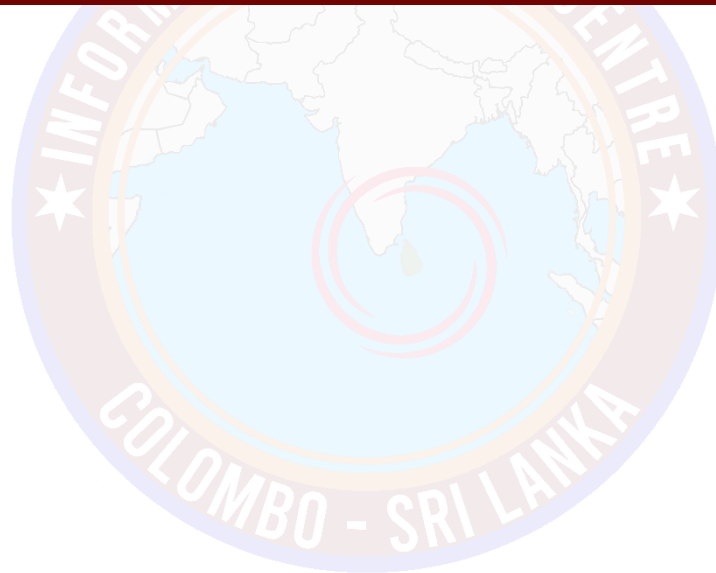




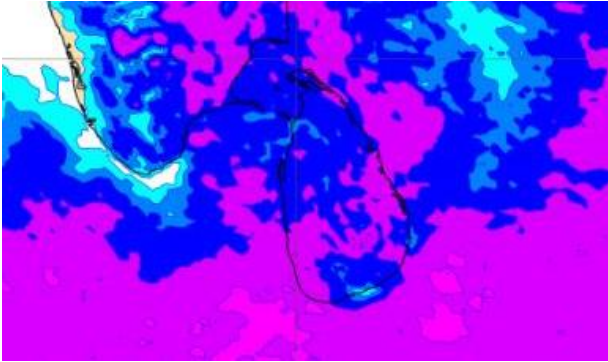
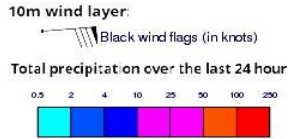
# **INFORMATION FUSION CENTRE COLOMBO**

**8 DAY FORECAST FOR COASTAL AREAS AROUND SRI LANKA**

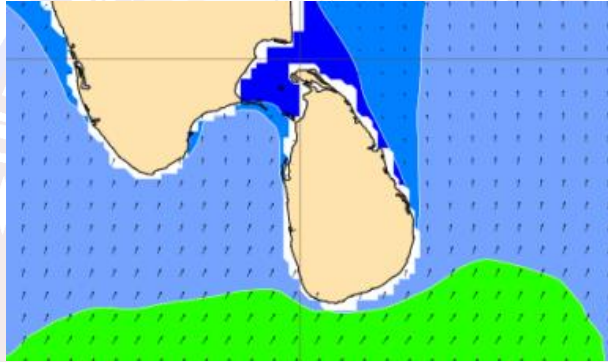
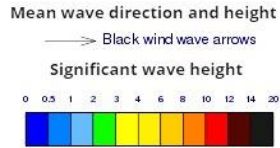
Issued at 10.00 p.m. on 11 October 2022  
Marine Weather Division, National Meteorological Centre, Department of  
Meteorology.



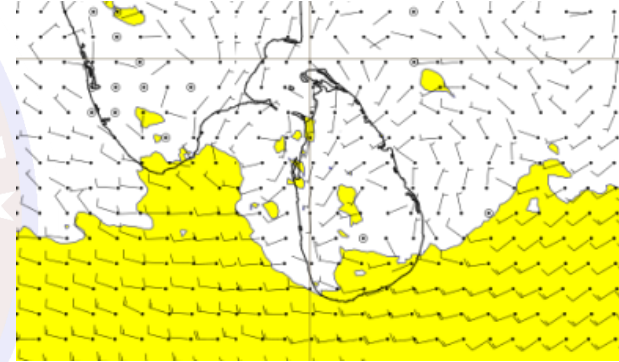
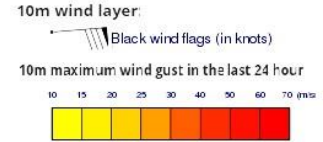
## Wind and Rainfall Forecast (Total precipitation for 24 hrs)



## Significant wave height (in meters)



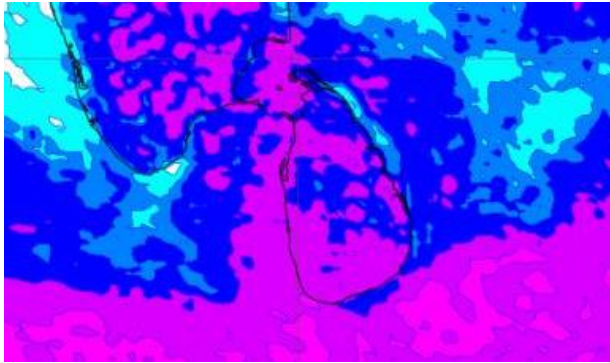
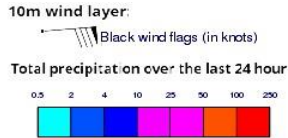
## Wind Gust (m/s)



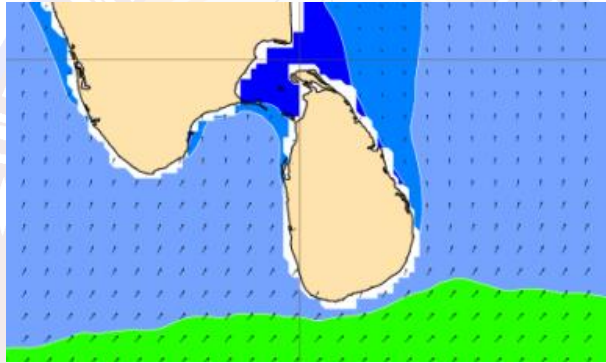
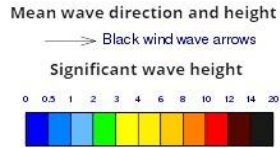
Showers or thundershowers will occur at several places in the sea areas off the coast extending from Puttalam to Matara via Colombo. Showers or thundershowers may occur at several places in the other sea areas around the island during the afternoon or night.

Wind speed will be 20-30 kmph in the sea areas around the island. The sea areas extending from Hambantota to Pottuvil can be fairly rough at times as the wind speed can increase up to 40-45 kmph.

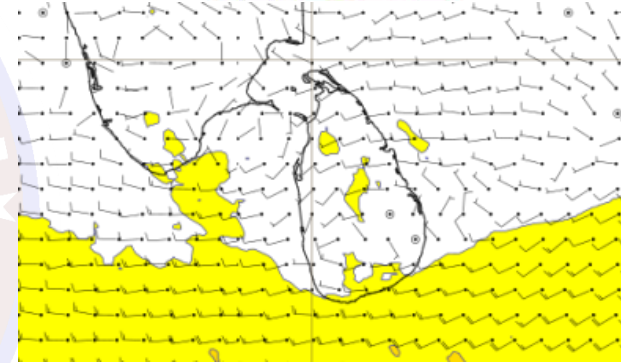
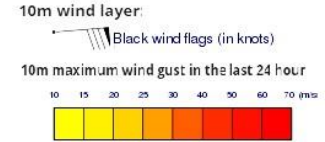
## Wind and Rainfall Forecast (Total precipitation for 24 hrs)



## Significant wave height (in meters)



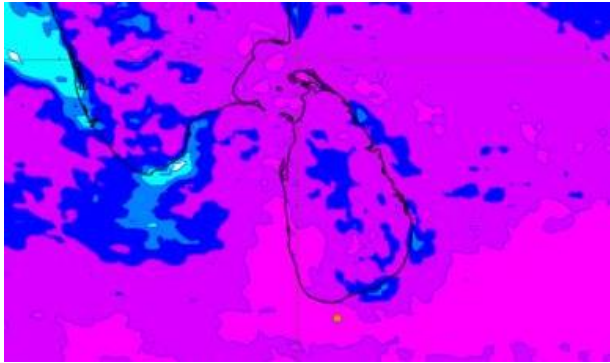
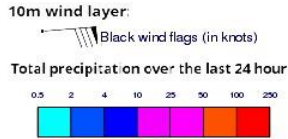
## Wind Gust (m/s)



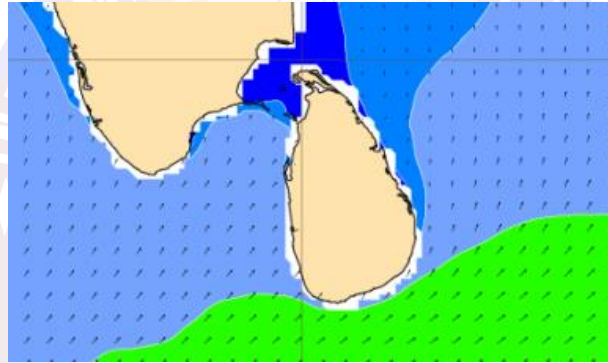
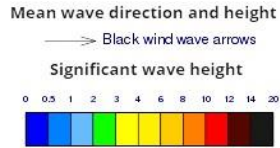
Showers or thundershowers will occur at several places in the sea areas off the coast extending from Puttalam to Matara via Colombo. Showers or thundershowers may occur at several places in the other sea areas around the island during the afternoon or night.

Wind speed will be 20-30 kmph in the sea areas around the island. The sea areas extending from Hambantota to Pottuvil can be fairly rough at times as the wind speed can increase up to 40-45 kmph.

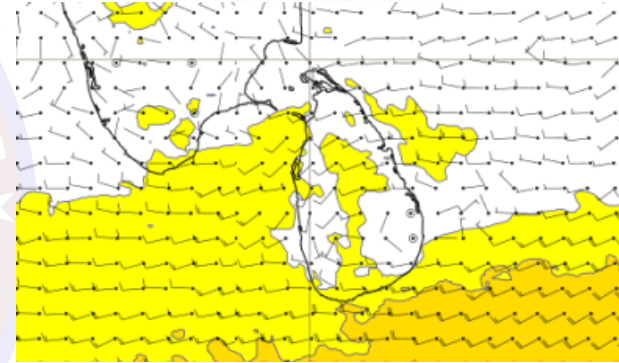
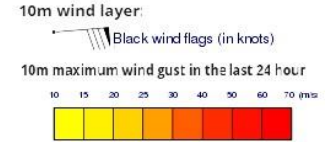
## Wind and Rainfall Forecast (Total precipitation for 24 hrs)



## Significant wave height (in meters)



## Wind Gust (m/s)

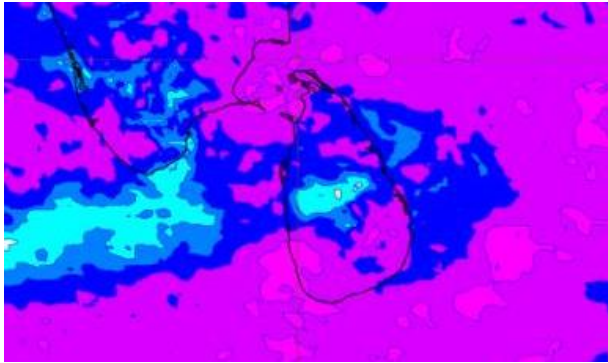
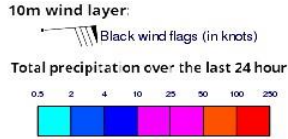


Showers will occur at times in the sea area off the coast extending from Puttalam to Matara via Colombo & Galle. Showers or thundershowers may occur at several places in the other sea areas around the island during the evening or night too.

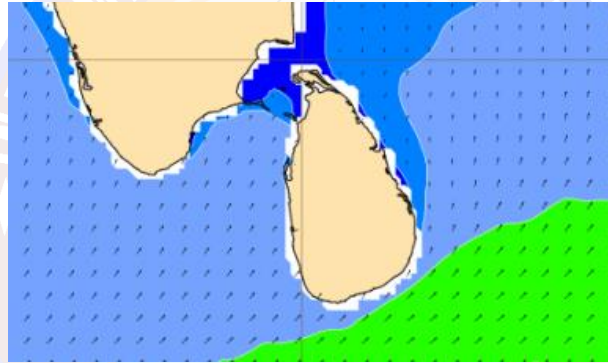
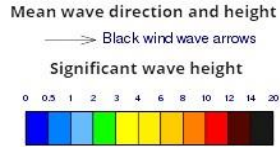
Wind speed will be 20-30 kmph in the sea areas around the island. The sea areas extending from Galle to Pottuvil via Hambantota can be fairly rough at times as the wind speed can increase up to 40-45 kmph.



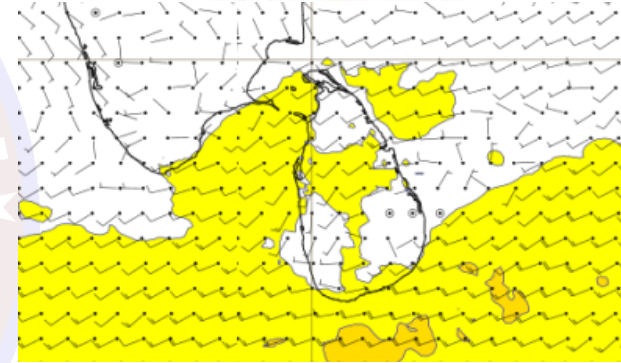
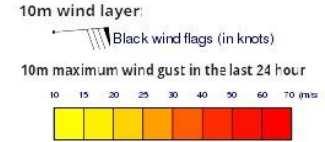
## Wind and Rainfall Forecast (Total precipitation for 24 hrs)



## Significant wave height (in meters)



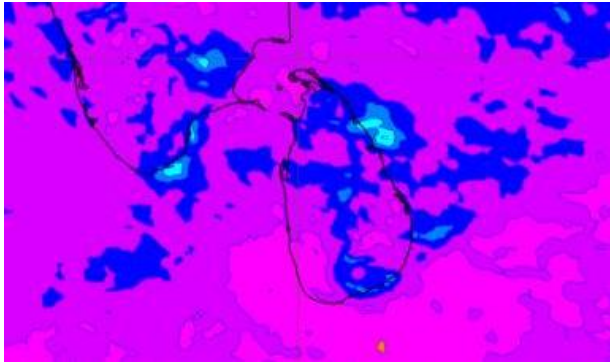
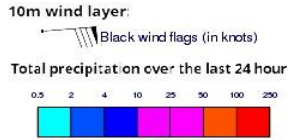
## Wind Gust (m/s)



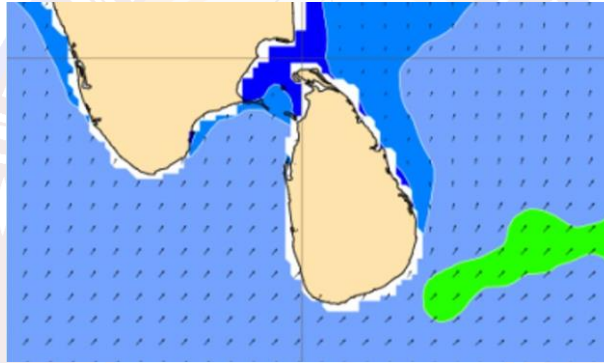
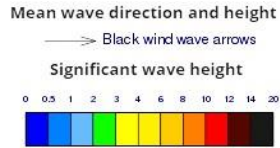
Showers will occur at times in the sea area off the coast extending from Puttalam to Matara via Colombo & Galle. Showers or thundershowers may occur at several places in the other sea areas around the island during the evening or night too.

Wind speed will be 20-30 kmph in the sea areas around the island. The sea areas extending from Galle to Pottuvil via Hambantota can be fairly rough at times as the wind speed can increase up to 40-45 kmph.

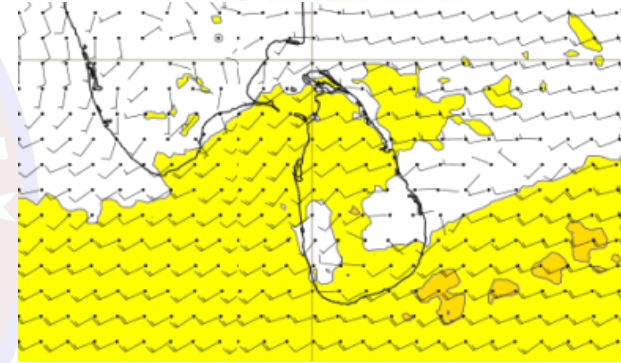
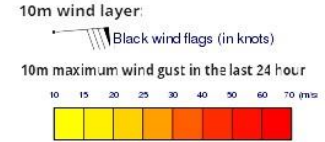
## Wind and Rainfall Forecast (Total precipitation for 24 hrs)



## Significant wave height (in meters)



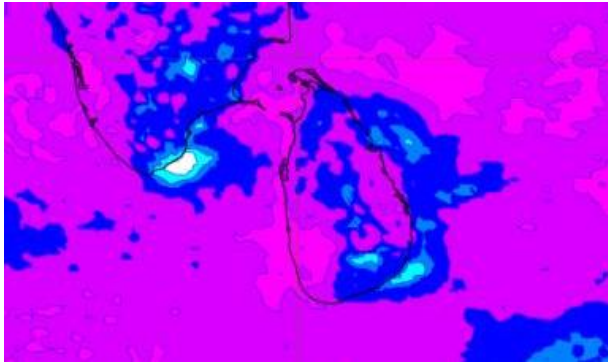
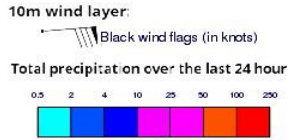
## Wind Gust (m/s)



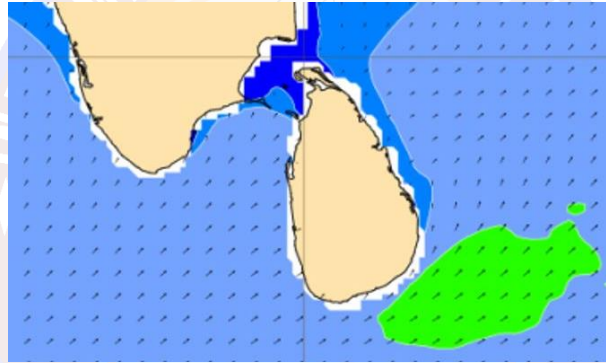
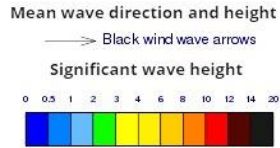
Showers will occur at times in the sea area off the coast extending from Puttalam to Matara via Colombo & Galle. Showers or thundershowers may occur at several places in the other sea areas around the island during the evening or night too.

Wind speed will be 20-30 kmph in the sea areas around the island. The sea areas extending from Galle to Pottuvil via Hambantota can be fairly rough at times as the wind speed can increase up to 40-45 kmph.

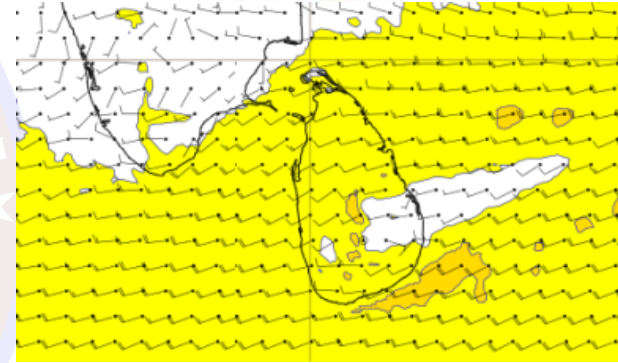
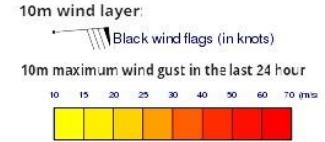
## Wind and Rainfall Forecast (Total precipitation for 24 hrs)



## Significant wave height (in meters)



## Wind Gust (m/s)

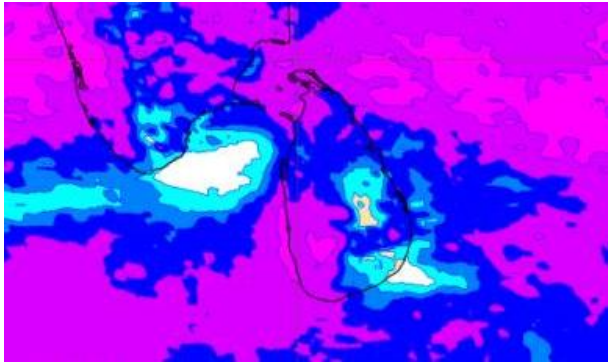
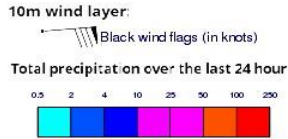


Showers will occur at times in the sea area off the coast extending from Puttalam to Matara via Colombo & Galle. Showers or thundershowers may occur at several places in the other sea areas around the island during the evening or night too.

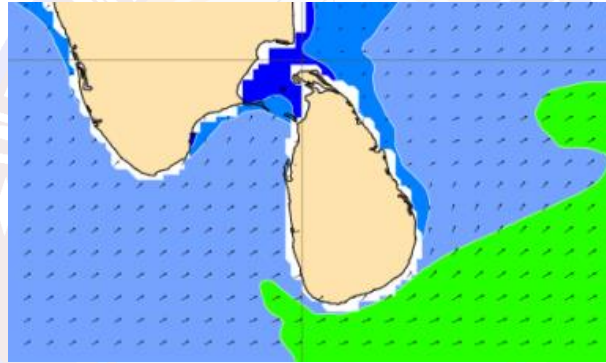
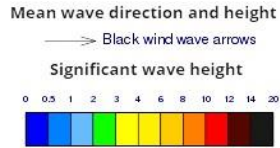
Wind speed will be 20-30 kmph in the sea areas around the island. The sea areas extending from Galle to Pottuvil via Hambantota can be fairly rough at times as the wind speed can increase up to 40-50 kmph.



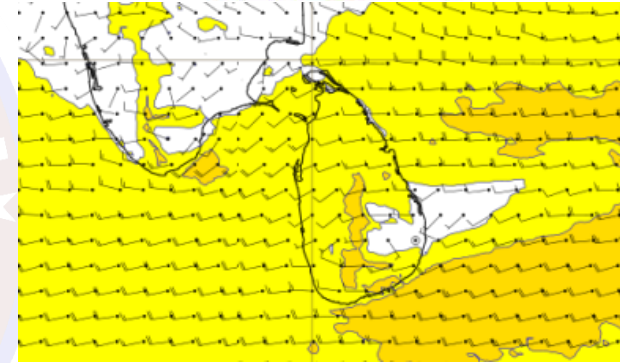
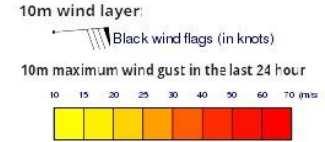
## Wind and Rainfall Forecast (Total precipitation for 24 hrs)



## Significant wave height (in meters)



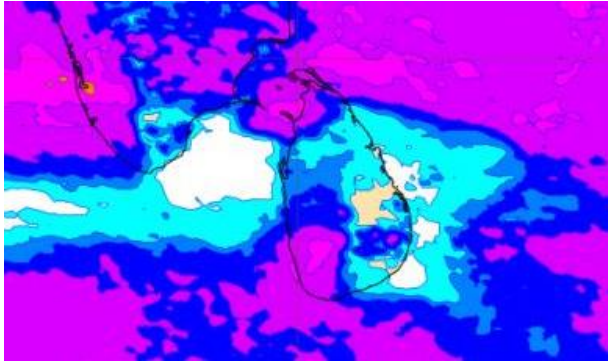
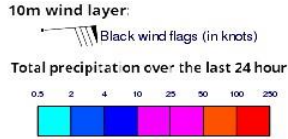
## Wind Gust (m/s)



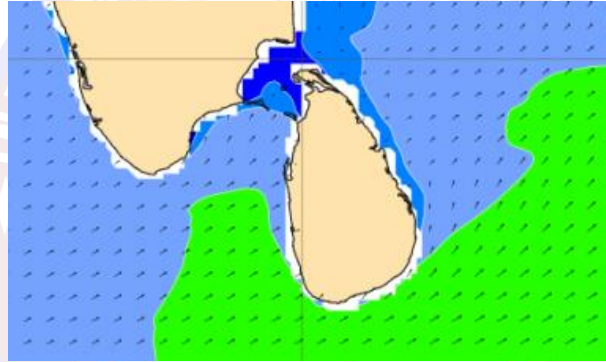
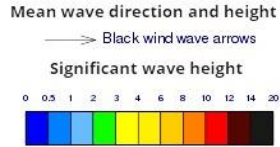
Showers or thundershowers will occur at several places in the sea areas off the coast extending from Puttalam to Matara via Colombo. Showers or thundershowers may occur at several places in the other sea areas around the island during the afternoon or night.

Wind speed will be 20-30 kmph in the sea areas around the island. The sea areas extending from Galle to Pottuvil via Hambantota can be fairly rough at times as the wind speed can increase up to 40-50 kmph.

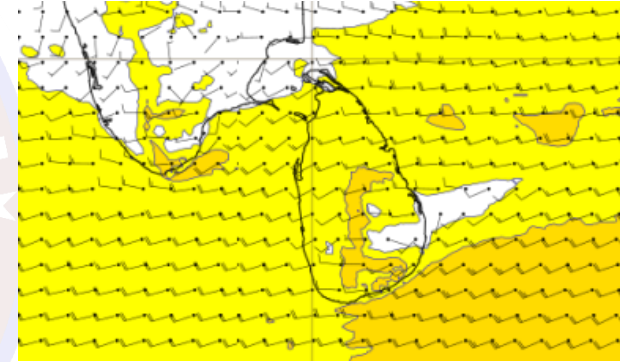
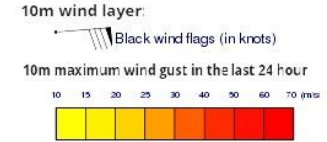
## Wind and Rainfall Forecast (Total precipitation for 24 hrs)



## Significant wave height (in meters)



## Wind Gust (m/s)



Showers will occur at times in the sea area off the coast extending from Puttalam to Matara via Colombo & Galle. Showers or thundershowers may occur at several places in the other sea areas around the island during the evening or night too.

Wind speed will be 20-30 kmph in the sea areas around the island. The sea areas extending from Galle to Pottuvil via Hambantota can be rough at times as the wind speed can increase up to 40-50 kmph.