



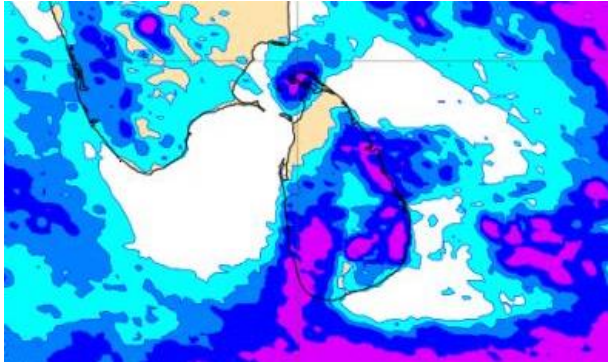
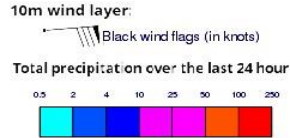
# **INFORMATION FUSION CENTRE COLOMBO**

**8 DAY FORECAST FOR COASTAL AREAS AROUND SRI LANKA**

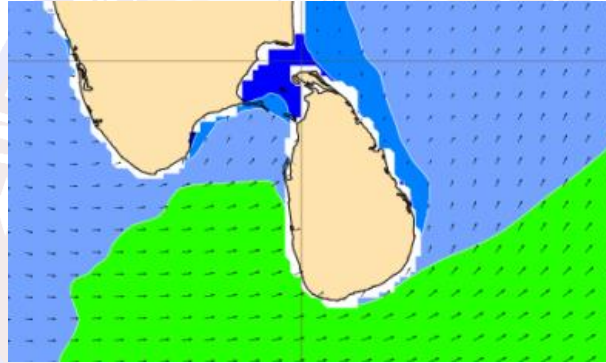
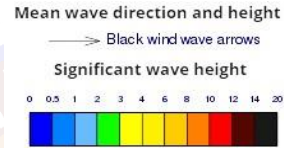
Issued at 10.00 p.m. on 03 October 2022  
Marine Weather Division, National Meteorological Centre, Department of  
Meteorology.



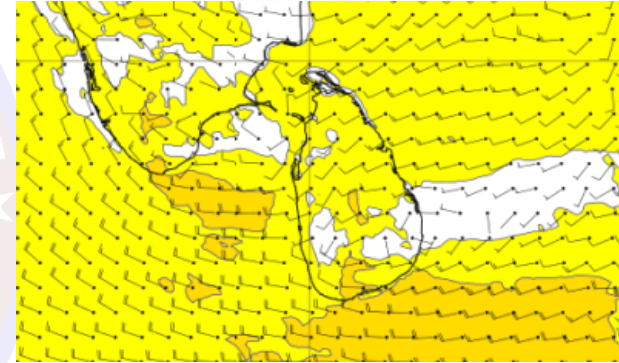
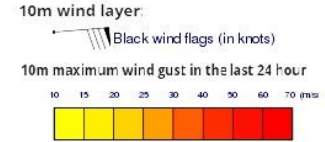
### Wind and Rainfall Forecast (Total precipitation for 24 hrs)



### Significant wave height (in meters)



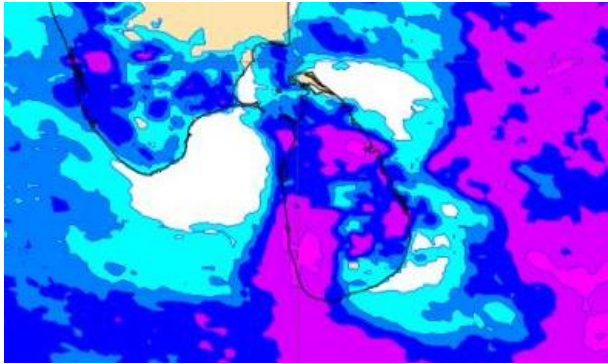
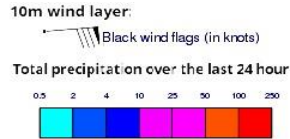
### Wind Gust (m/s)



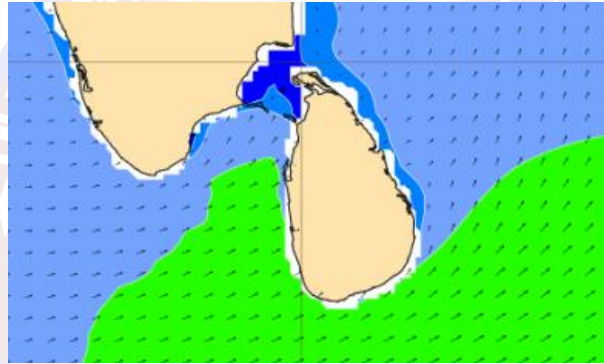
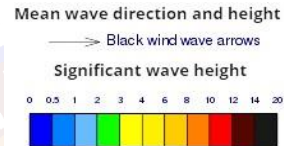
Showers at times will occur in the sea area off the coast extending from Puttalam to Matara via Colombo.

Wind speed will be 30-40 kmph in the sea areas around the island. The sea areas extending from Galle to Pottuvil via Hambantota can be very rough at times as the wind speed can increase up to 60-70 kmph. The sea areas extending from Galle to Trincomalee via Puttalam, Mannar and Kankasanturai and Galle to Pottuvil via Hambantota can be rough at times as the wind speed can increase up to 50-60 kmph. Wind speed may increase up to 50 kmph and can be fairly rough in the other sea area around the island.

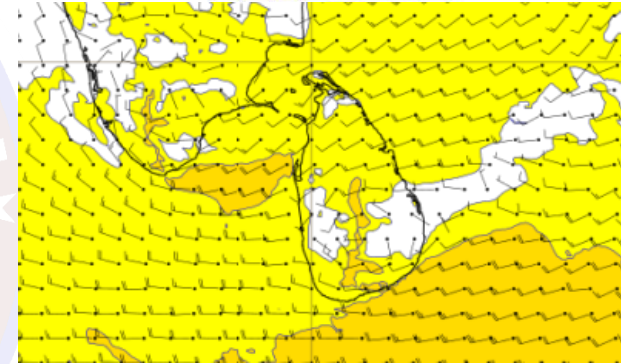
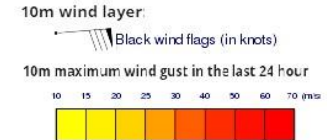
### Wind and Rainfall Forecast (Total precipitation for 24 hrs)



### Significant wave height (in meters)



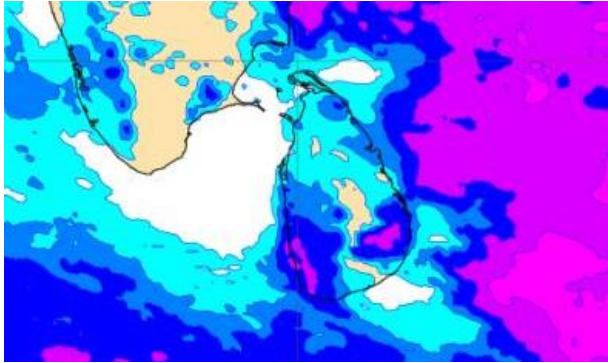
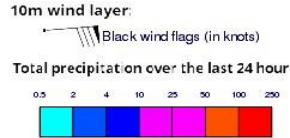
### Wind Gust (m/s)



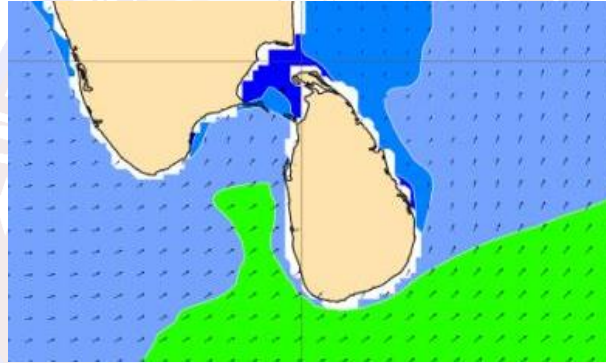
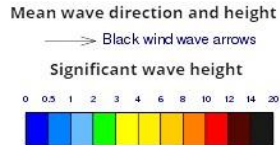
Showers at times will occur in the sea area off the coast extending from Puttalam to Matara via Colombo.

Wind speed will be 30-40 kmph in the sea areas around the island. The sea areas extending from Galle to Pottuvil via Hambantota can be very rough at times as the wind speed can increase up to 60-70 kmph. The sea areas extending from Galle to Trincomalee via Puttalam, Mannar and Kankasanturai and Galle to Pottuvil via Hambantota can be rough at times as the wind speed can increase up to 50-60 kmph. Wind speed may increase up to 50 kmph and can be fairly rough in the other sea area around the island.

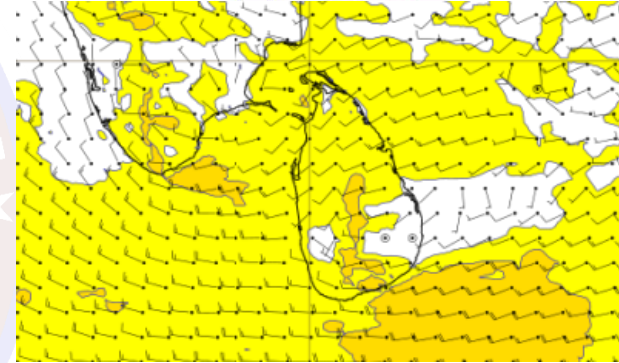
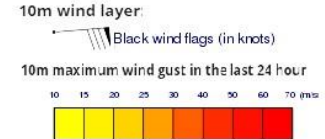
### Wind and Rainfall Forecast (Total precipitation for 24 hrs)



### Significant wave height (in meters)



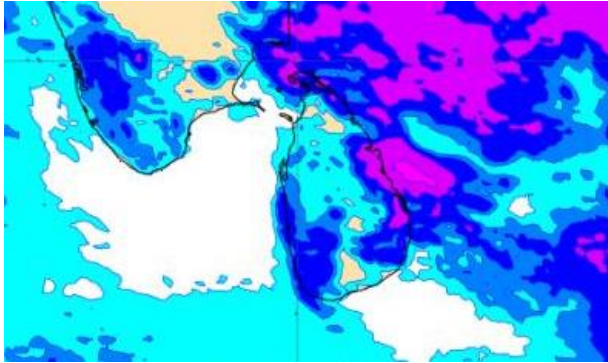
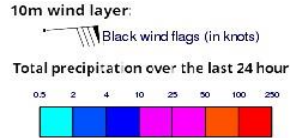
### Wind Gust (m/s)



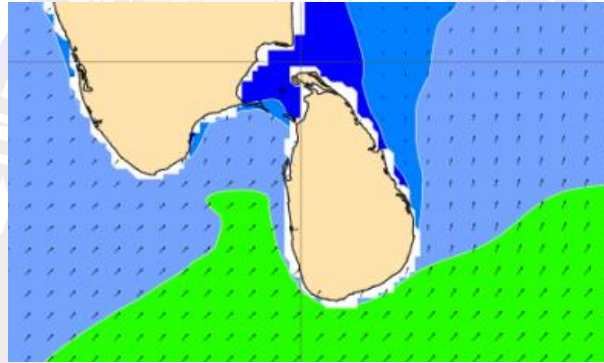
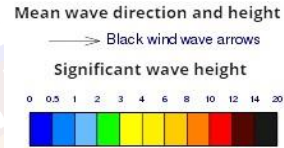
Showers will occur at several places in the sea area off the coast extending from Colombo to Matara via Galle.

Wind speed will be 30-40 kmph in the sea areas around the island. The sea areas extending from Puttalam to Kankasanturai via Mannar and from Galle to Pottuvil via Hambantota can be rough at times as the wind speed can increase up to 50-60 kmph. Wind speed may increase up to 50 kmph and can be fairly rough in the other sea area around the island.

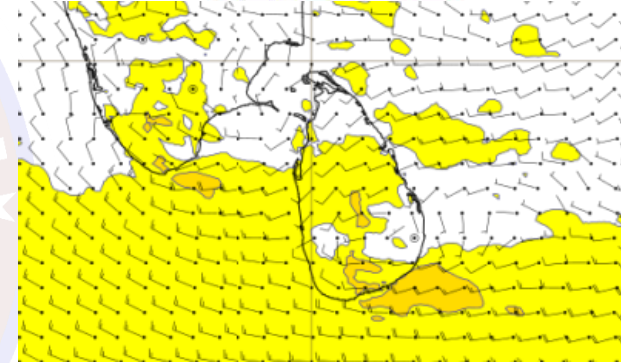
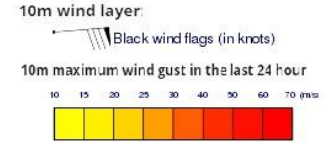
### Wind and Rainfall Forecast (Total precipitation for 24 hrs)



### Significant wave height (in meters)



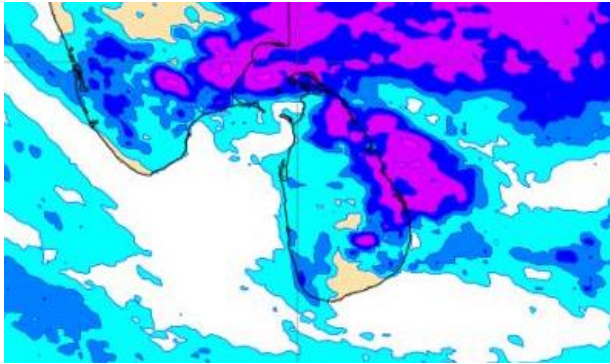
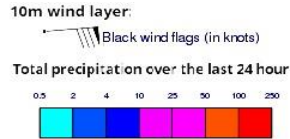
### Wind Gust (m/s)



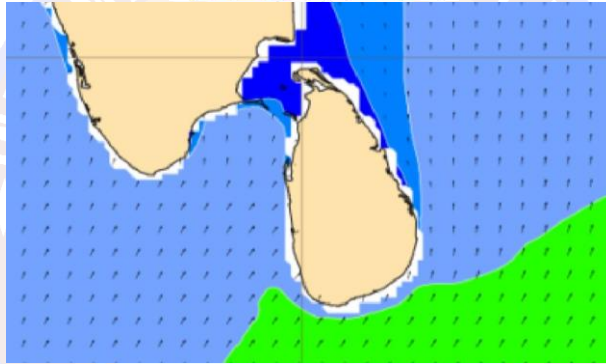
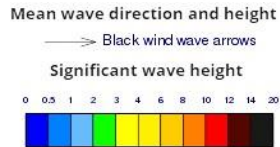
Showers will occur at several places in the sea area off the coast extending from Colombo to Matara via Galle.

Wind speed will be 30-40 kmph in the sea areas around the island. The sea areas extending from Puttalam to Kankasanturai via Mannar and from Galle to Pottuvil via Hambantota can be rough at times as the wind speed can increase up to 50-60 kmph. Wind speed may increase up to 50 kmph and can be fairly rough in the other sea area around the island.

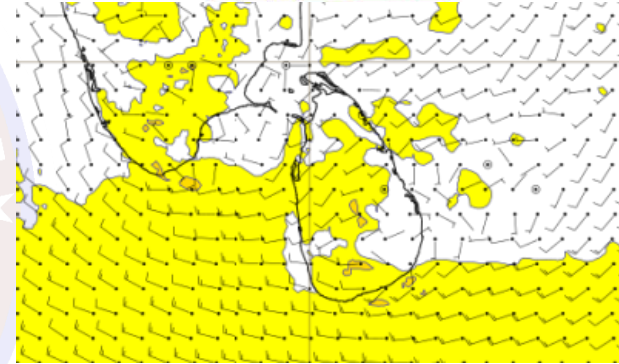
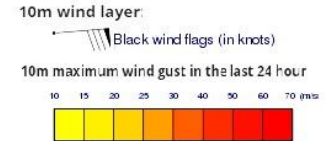
### Wind and Rainfall Forecast (Total precipitation for 24 hrs)



### Significant wave height (in meters)



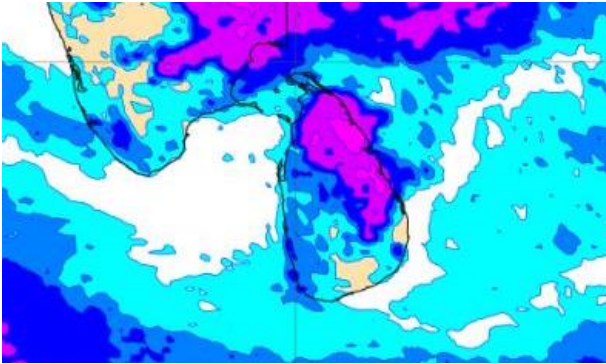
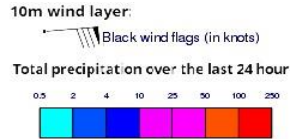
### Wind Gust (m/s)



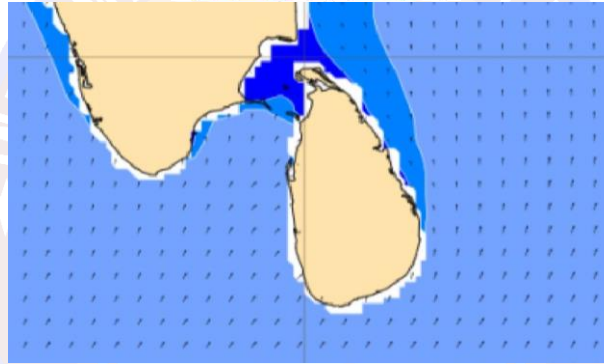
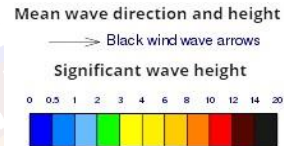
Showers will occur at several places in the sea area off the coast extending from Colombo to Matara via Galle.

Wind speed will be 30-40 kmph in the sea areas around the island. The sea areas extending from Galle to Pottuvil via Hambantota can be rough at times as the wind speed can increase up to 50-60 kmph.

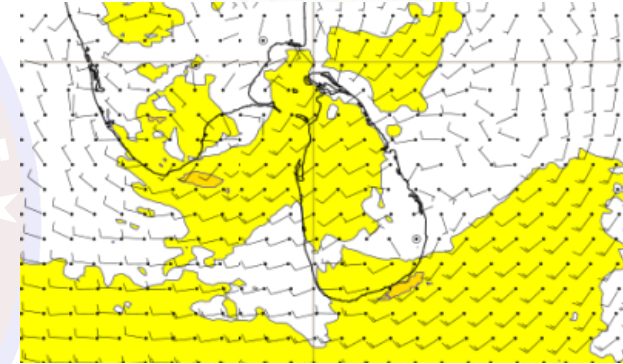
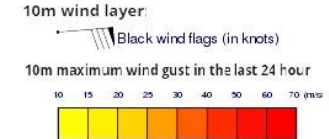
### Wind and Rainfall Forecast (Total precipitation for 24 hrs)



### Significant wave height (in meters)



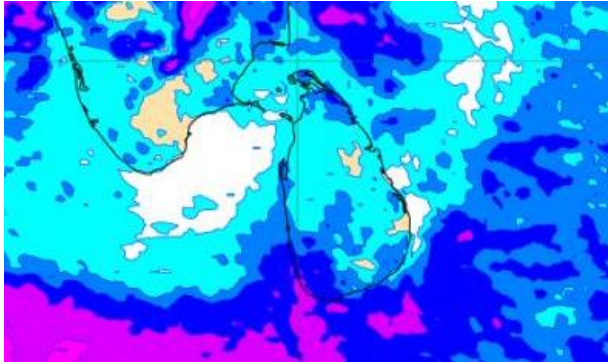
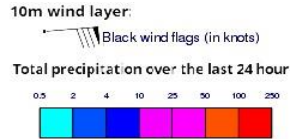
### Wind Gust (m/s)



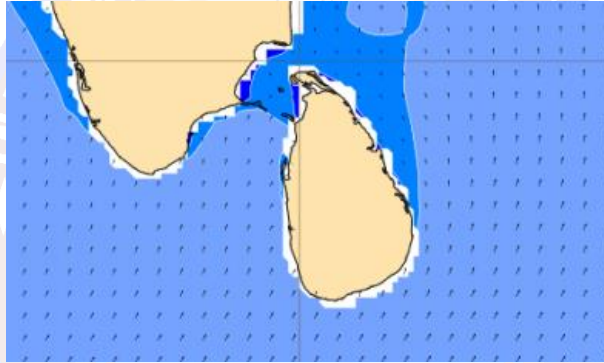
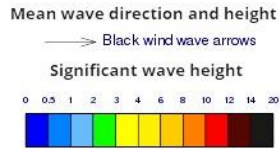
Showers will occur at a few places in the sea area off the coast extending from Colombo to Matara via Galle.

Wind speed will be 30-40 kmph in the sea areas around the island. The sea areas extending from Galle to Pottuvil via Hambantota can be rough at times as the wind speed can increase up to 50-60 kmph.

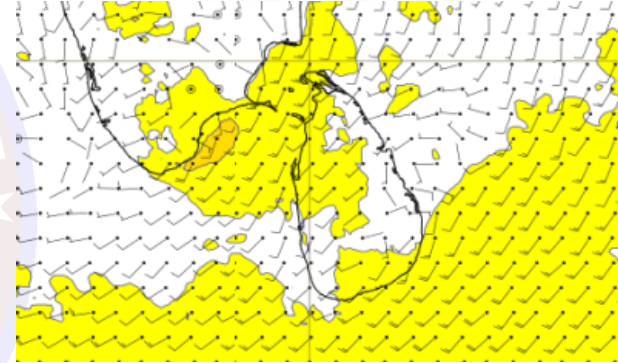
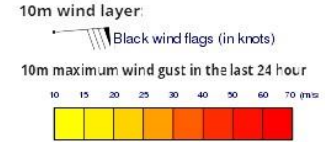
## Wind and Rainfall Forecast (Total precipitation for 24 hrs)



## Significant wave height (in meters)



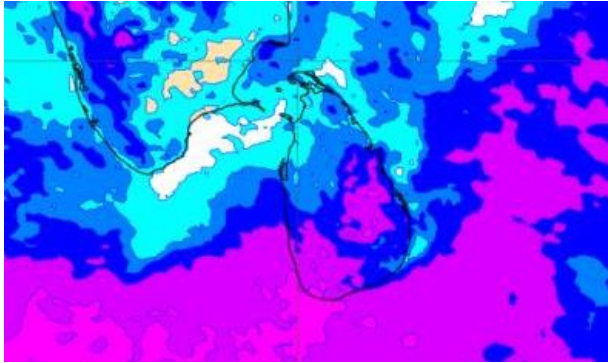
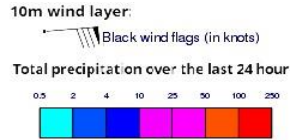
## Wind Gust (m/s)



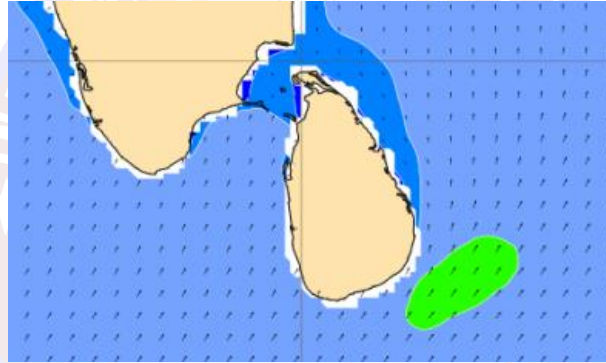
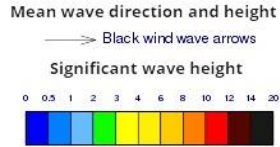
Showers or thundershowers will occur at several places in the sea area around the island.

Wind speed will be 25-35 kmph in the sea areas around the island. The sea areas extending from Galle to Pottuvil via Hambantota can be rough at times as the wind speed can increase up to 45-50 kmph.

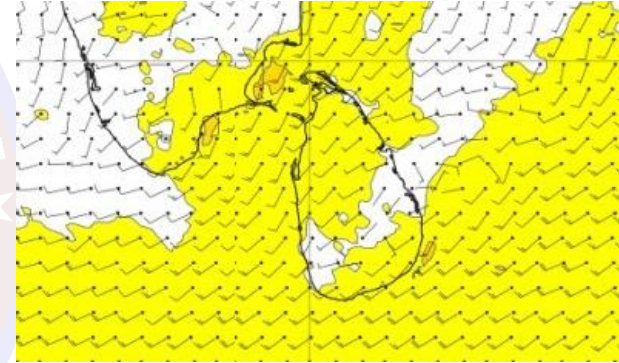
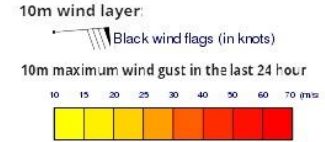
## Wind and Rainfall Forecast (Total precipitation for 24 hrs)



## Significant wave height (in meters)



## Wind Gust (m/s)



Showers or thundershowers will occur at several places in the sea area around the island.

Wind speed will be 25-35 kmph in the sea areas around the island. The sea areas extending from Galle to Pottuvil via Hambantota can be rough at times as the wind speed can increase up to 45-50 kmph.