



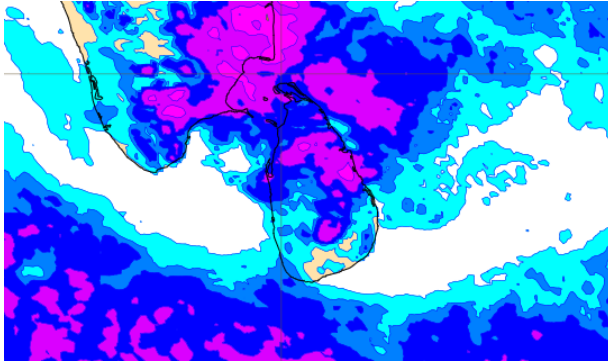
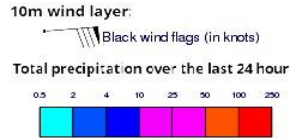
# **INFORMATION FUSION CENTRE COLOMBO**

**8 DAY FORECAST FOR COASTAL AREAS AROUND SRI LANKA**

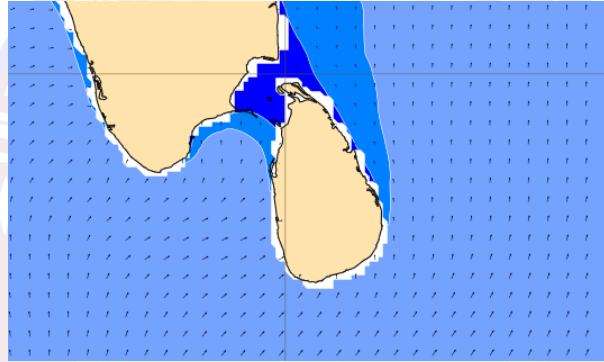
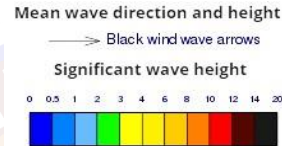
Issued at 10.00 p.m. on 25 September 2022  
Marine Weather Division, National Meteorological Centre, Department of  
Meteorology.



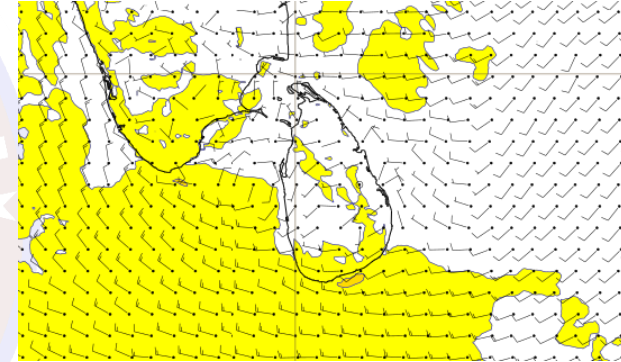
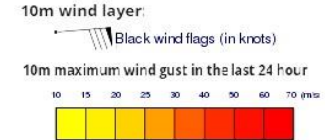
## Wind and Rainfall Forecast (Total precipitation for 24 hrs)



## Significant wave height (in meters)



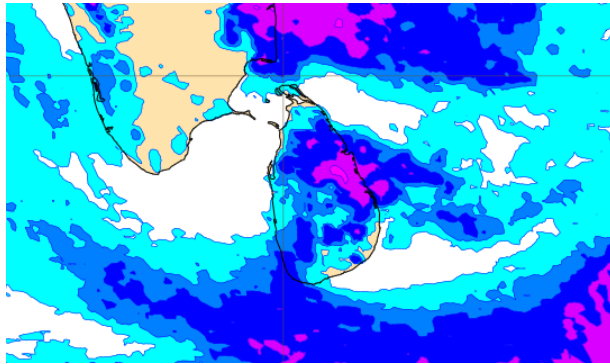
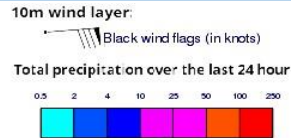
## Wind Gust (m/s)



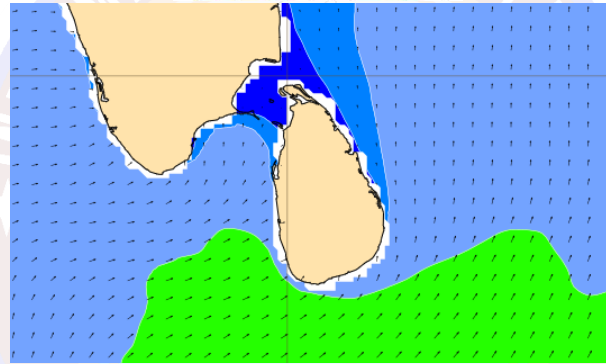
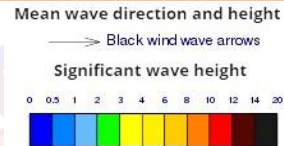
Showers will occur at a few places in the sea area off the coast extending from Colombo to Galle. Showers or thundershowers may occur at a few places in the sea area extending from Mannar to Trincomalee via Kankasanthurai during the afternoon or night.

Wind speed will be 20-30 kmph in the sea areas around the island. The sea areas extending from Matara to Pottuvil via Hambantota can be fairly rough at times as the wind speed can increase up to 40-50 kmph.

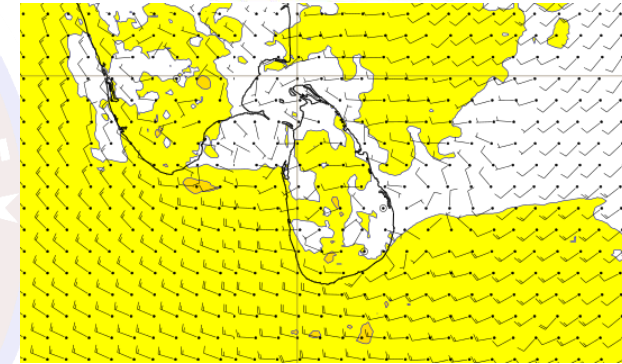
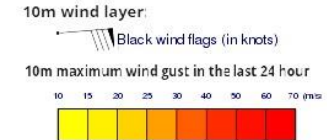
### Wind and Rainfall Forecast (Total precipitation for 24 hrs)



### Significant wave height (in meters)



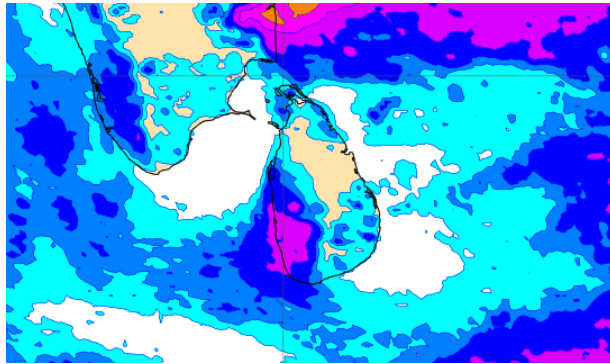
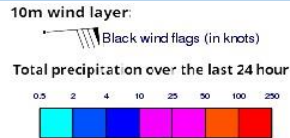
### Wind Gust (m/s)



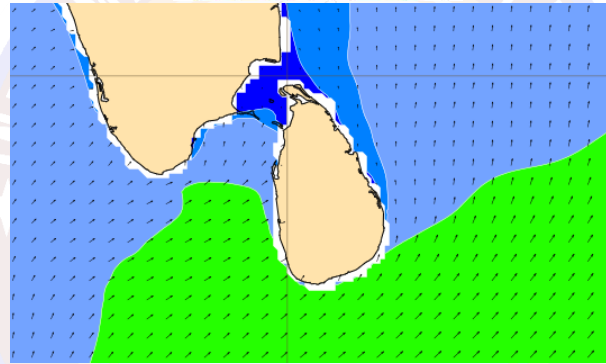
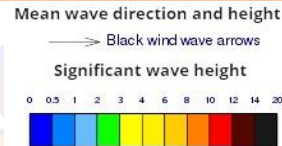
Showers will occur at a few places in the sea area off the coast extending from Colombo to Galle. Showers or thundershowers may occur at a few places in the sea area extending from Mannar to Trincomalee via Kankasanthurai afternoon or night.

Wind speed will be 20-30 kmph in the sea areas around the island. The sea areas extending from Matara to Pottuvil via Hambantota can be fairly rough at times as the wind speed can increase up to 40-50 kmph.

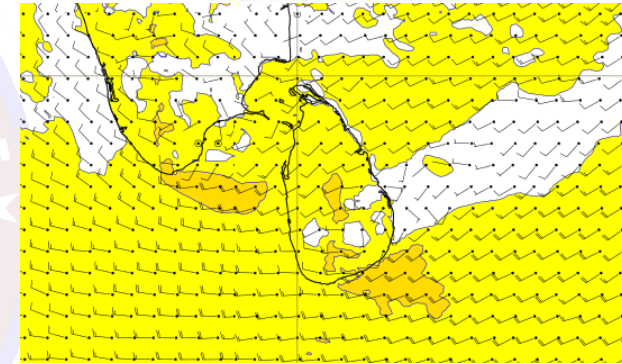
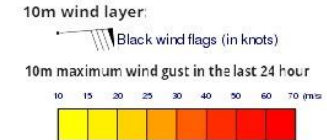
## Wind and Rainfall Forecast (Total precipitation for 24 hrs)



## Significant wave height (in meters)



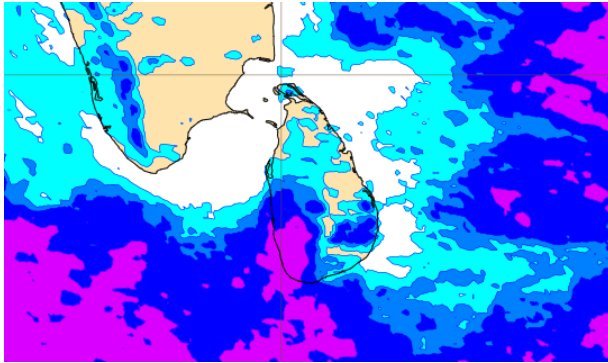
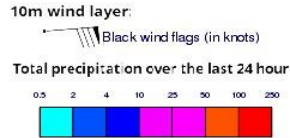
## Wind Gust (m/s)



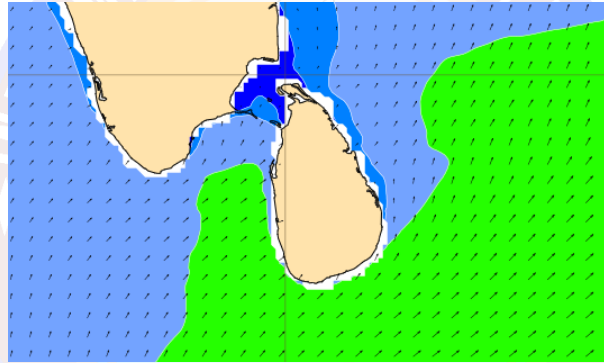
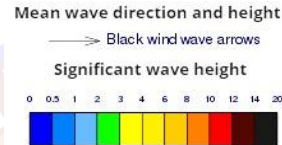
Showers will occur at several places in the sea area off the coast extending from Puttalam to Galle via Colombo.

Wind speed will be 25-35 kmph in the sea areas around the island. The sea areas extending from Puttalam to Kankasanturai via Mannar and from Hambantota to Pottuvil can be rough at times as the wind speed can increase up to 45-55 kmph.

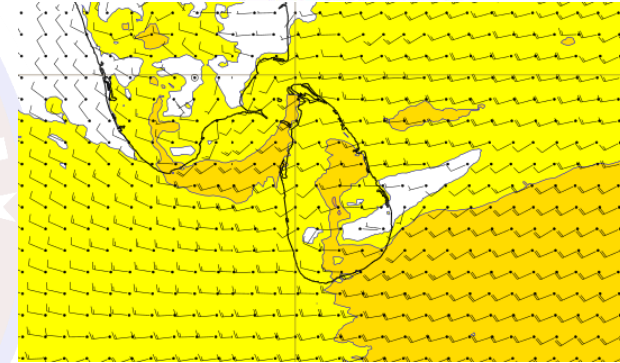
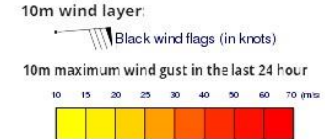
## Wind and Rainfall Forecast (Total precipitation for 24 hrs)



## Significant wave height (in meters)



## Wind Gust (m/s)

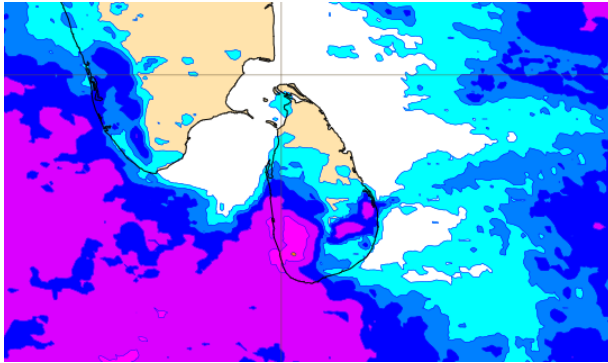


Showers will occur at several places in the sea area off the coast extending from Puttalam to Galle via Colombo.

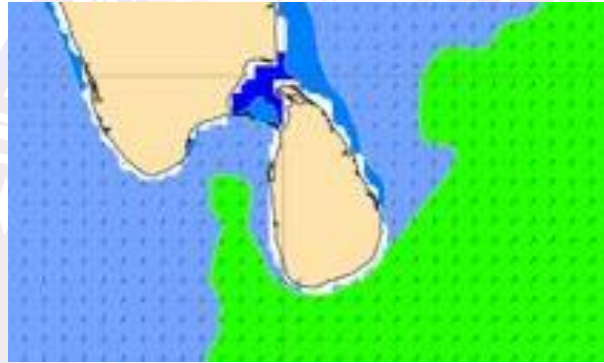
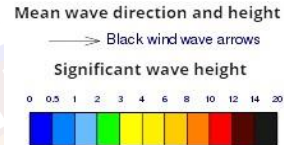
Wind speed will be 25-35 kmph in the sea areas around the island. The sea areas extending from Puttalam to Kankasanturai via Mannar and from Hambantota to Pottuvil can be rough at times as the wind speed can increase up to 45-55 kmph.



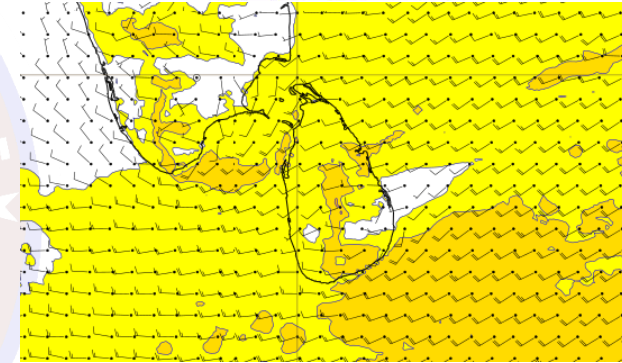
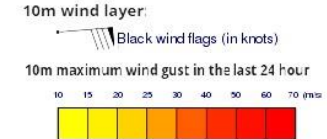
### Wind and Rainfall Forecast (Total precipitation for 24 hrs)



### Significant wave height (in meters)



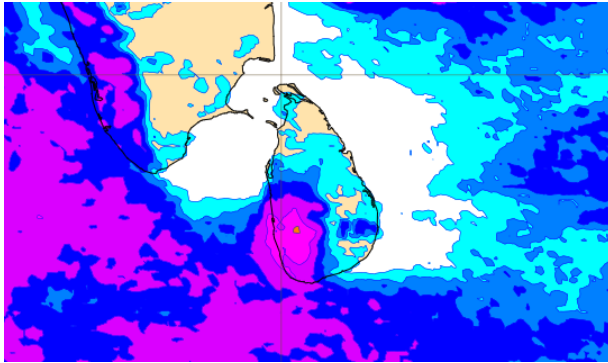
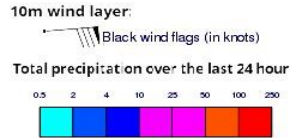
### Wind Gust (m/s)



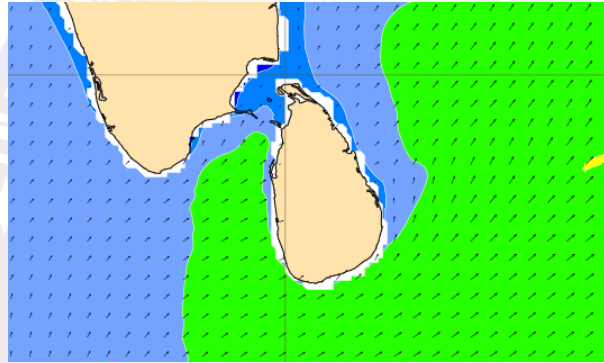
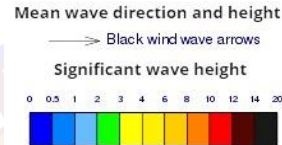
Showers will occur at times in the sea area off the coast extending from Puttalam to Matara via Colombo & Galle.

Wind speed will be 25-35 kmph in the sea areas around the island. The sea areas extending from Puttalam to Kankasanturai via Mannar and from Hambantota to Pottuvil can be rough at times as the wind speed can increase up to 45-55 kmph.

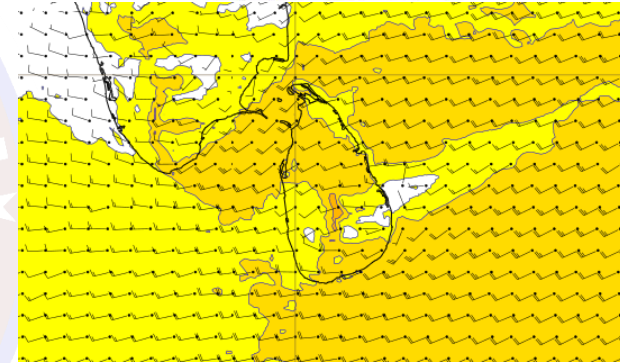
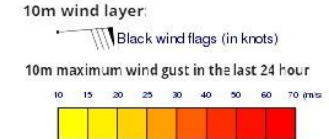
### Wind and Rainfall Forecast (Total precipitation for 24 hrs)



### Significant wave height (in meters)



### Wind Gust (m/s)

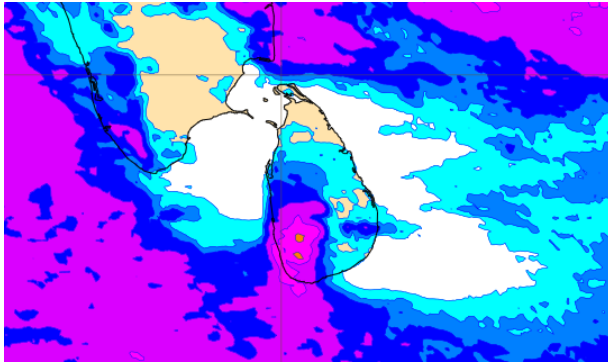
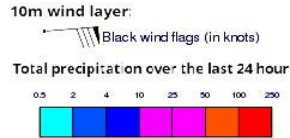


Showers will occur at times in the sea area off the coast extending from Puttalam to Matara via Colombo & Galle.

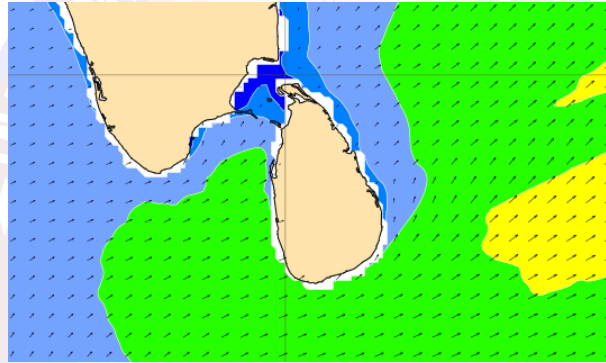
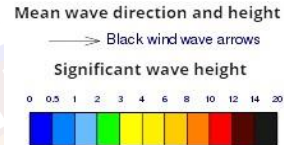
Wind speed will be 25-35 kmph in the sea areas around the island. The sea areas extending from Puttalam to Kankasanturai via Mannar and from Hambantota to Pottuvil can be rough at times as the wind speed can increase up to 45-55 kmph.



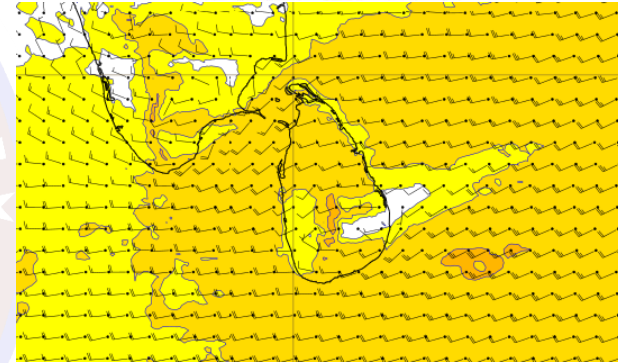
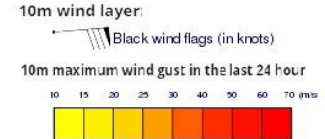
### Wind and Rainfall Forecast (Total precipitation for 24 hrs)



### Significant wave height (in meters)



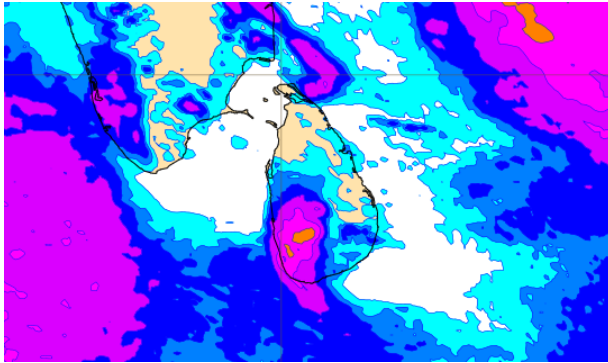
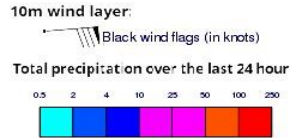
### Wind Gust (m/s)



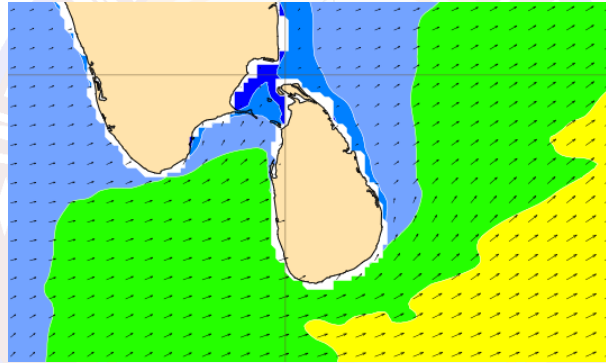
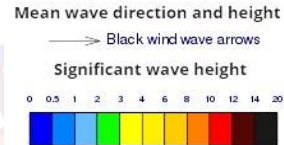
Showers will occur at several places in the sea area off the coast extending from Colombo to Matara via Galle.

Wind speed will be 30-40 kmph in the sea areas around the island. The sea areas extending from Puttalam to Kankasanturai via Mannar and from Hambantota to Pottuvil can be rough at times as the wind speed can increase up to 50-60 kmph.

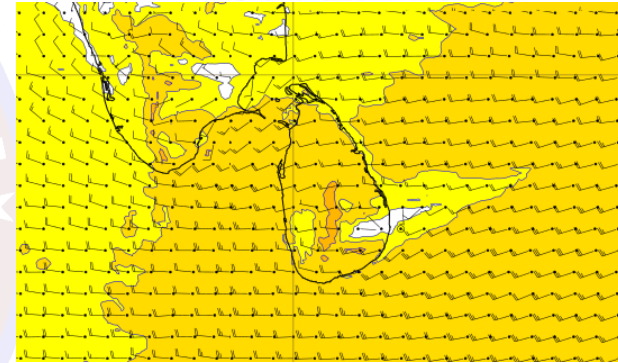
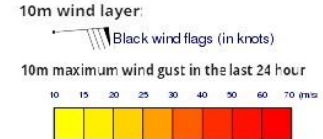
### Wind and Rainfall Forecast (Total precipitation for 24 hrs)



### Significant wave height (in meters)



### Wind Gust (m/s)



Showers will occur at several places in the sea area off the coast extending from Colombo to Matara via Galle.

Wind speed will be 30-40 kmph in the sea areas around the island. The sea areas extending from Puttalam to Kankasanturai via Mannar and from Hambantota to Pottuvil can be rough at times as the wind speed can increase up to 50-60 kmph.