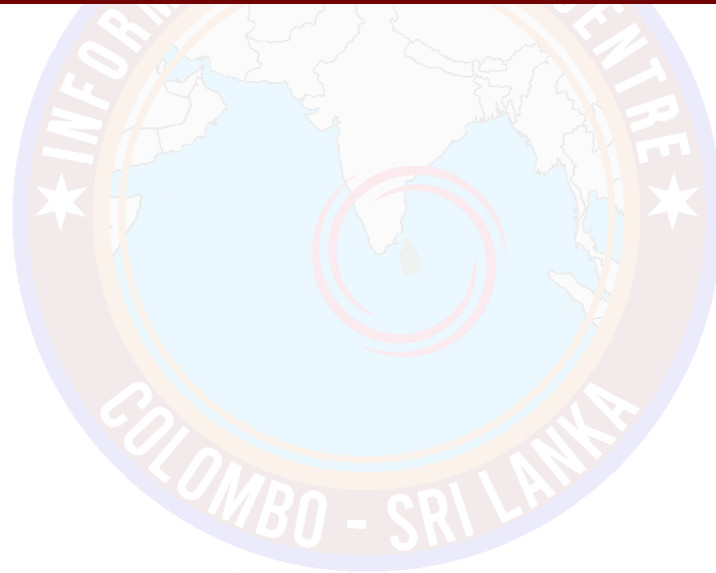




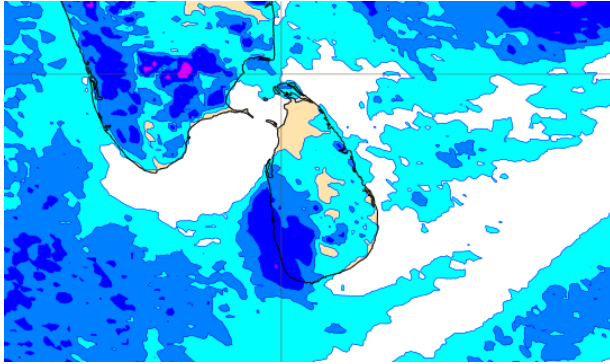
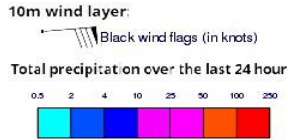
INFORMATION FUSION CENTRE COLOMBO

8 DAY FORECAST FOR COASTAL AREAS AROUND SRI LANKA

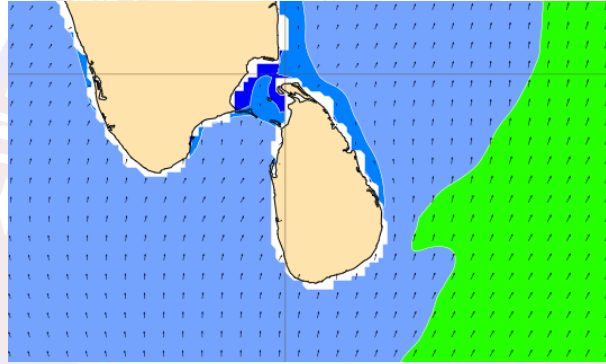
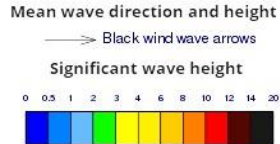
Issued at 10.00 p.m. on 17 September 2022
Marine Weather Division, National Meteorological Centre, Department of
Meteorology.



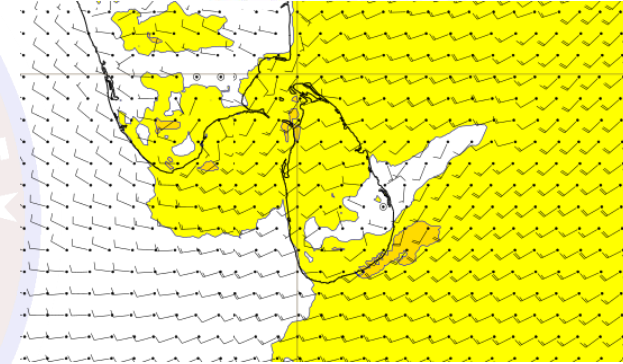
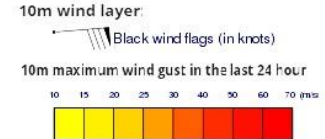
Wind and Rainfall Forecast (Total precipitation for 24 hrs)



Significant wave height (in meters)



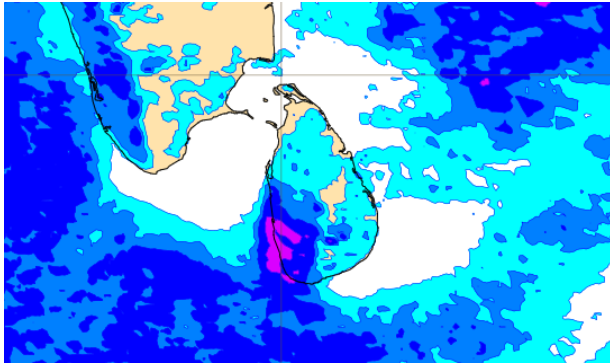
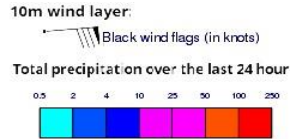
Wind Gust (m/s)



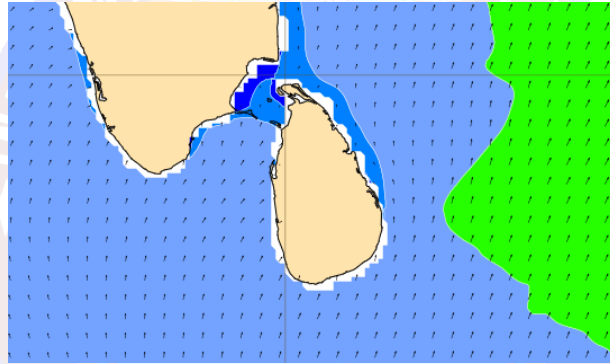
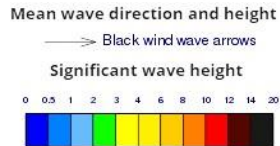
Showers will occur at a few places in the sea area off the coast extending from Puttalam to Galle via Colombo.

Wind speed will be 25-35 kmph in the sea areas around the island. The sea areas extending from Puttalam to Kankasanturai via Mannar and from Hambantota to Pottuvil can be fairly rough at times as the wind speed can increase up to 40-50 kmph.

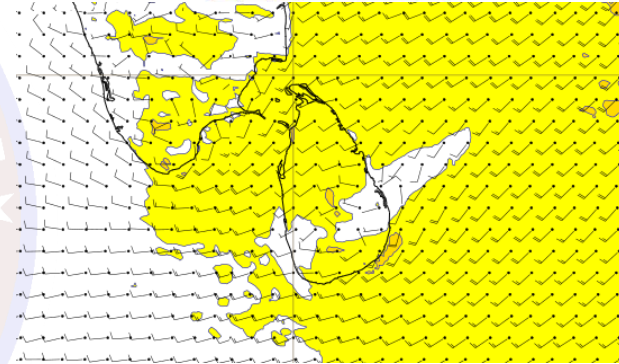
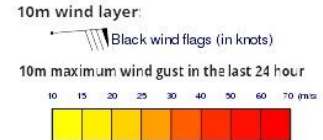
Wind and Rainfall Forecast (Total precipitation for 24 hrs)



Significant wave height (in meters)



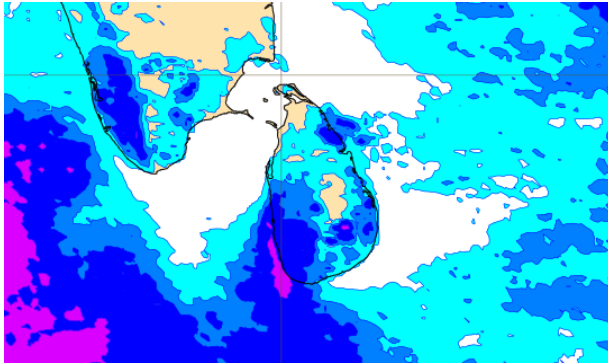
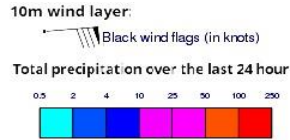
Wind Gust (m/s)



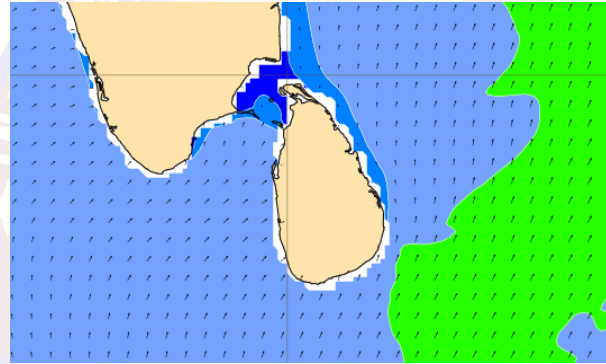
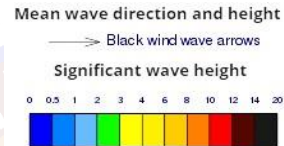
Showers will occur at several places in the sea areas off the coast extending from Puttalam to Matara via Colombo and Galle.

Wind speed will be 25-35 kmph in the sea areas around the island. The sea areas extending from Puttalam to Kankasanturai via Mannar and from Hambantota to Pottuvil can be fairly rough at times as the wind speed can increase up to 40-50 kmph.

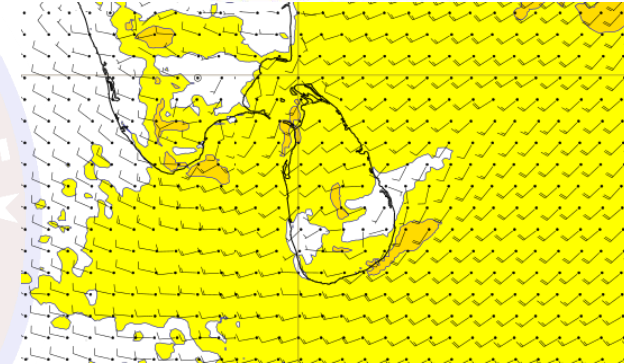
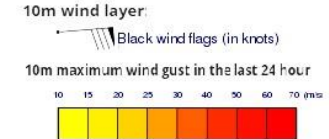
Wind and Rainfall Forecast (Total precipitation for 24 hrs)



Significant wave height (in meters)



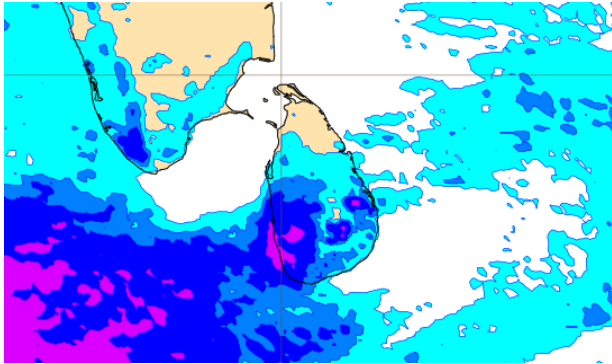
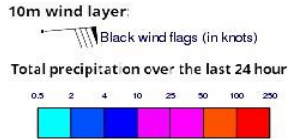
Wind Gust (m/s)



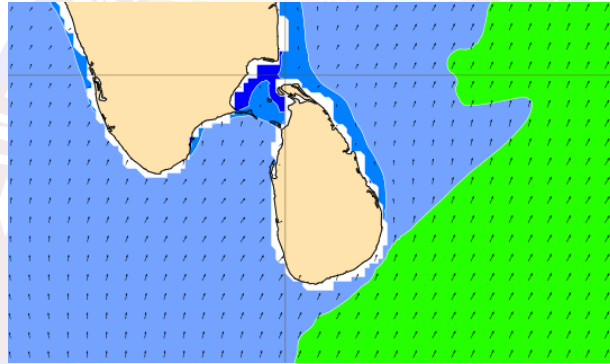
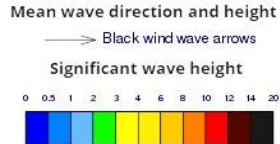
Showers will occur at several places in the sea areas off the coast extending from Puttalam to Matara via Colombo and Galle.

Wind speed will be 25-35 kmph in the sea areas around the island. The sea areas extending from Puttalam to Kankasanturai via Mannar and from Hambantota to Pottuvil can be fairly rough at times as the wind speed can increase up to 40-45 kmph.

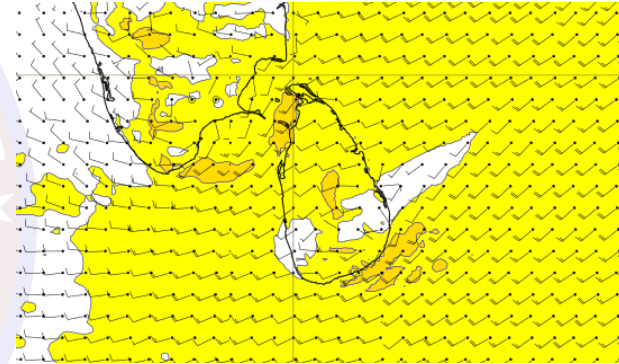
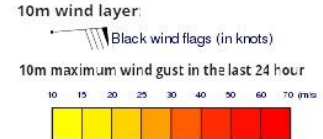
Wind and Rainfall Forecast (Total precipitation for 24 hrs)



Significant wave height (in meters)



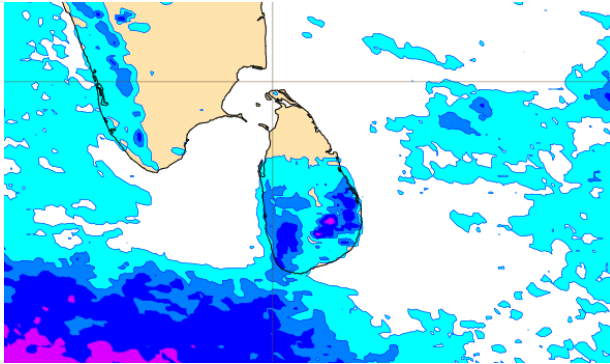
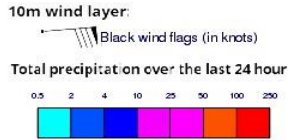
Wind Gust (m/s)



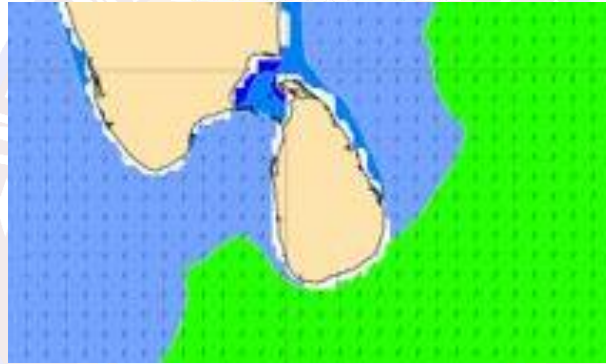
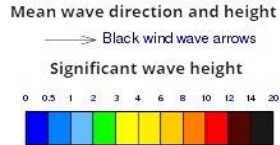
Showers will occur at several places in the sea areas off the coast extending from Puttalam to Matara via Colombo and Galle.

Wind speed will be 25-35 kmph in the sea areas around the island. The sea areas extending from Puttalam to Kankasanturai via Mannar and from Hambantota to Pottuvil can be fairly rough at times as the wind speed can increase up to 40-45 kmph.

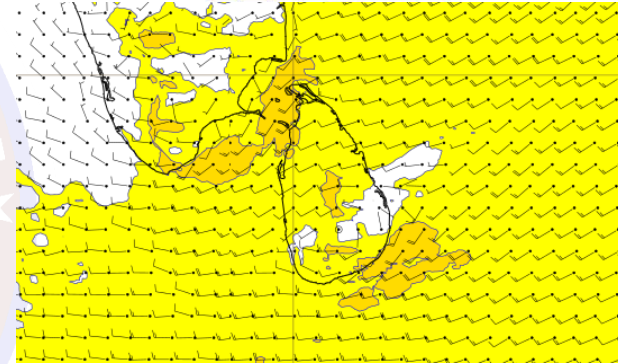
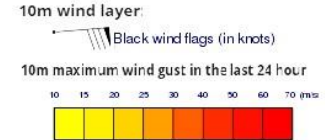
Wind and Rainfall Forecast (Total precipitation for 24 hrs)



Significant wave height (in meters)



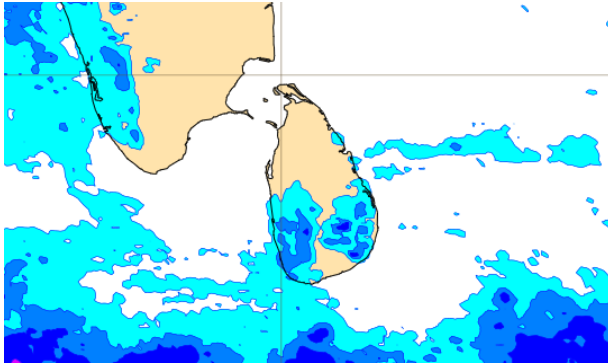
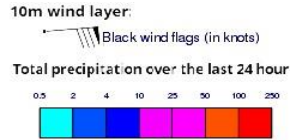
Wind Gust (m/s)



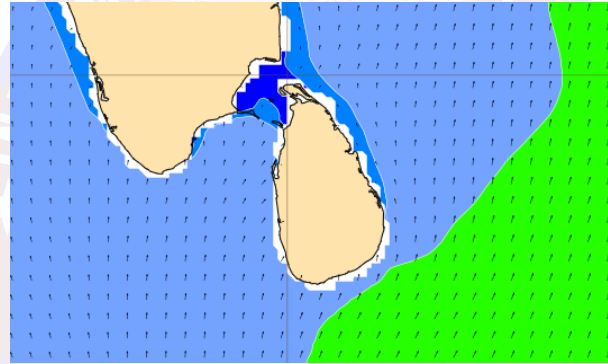
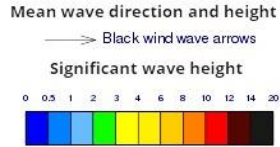
Mainly fair weather will prevail over sea areas around the island.

Wind speed will be 30-40 kmph in the sea areas around the island. The sea areas extending from Puttalam to Kankasanturai via Mannar and from Hambantota to Pottuvil can be fairly rough at times as the wind speed can increase up to 50 kmph.

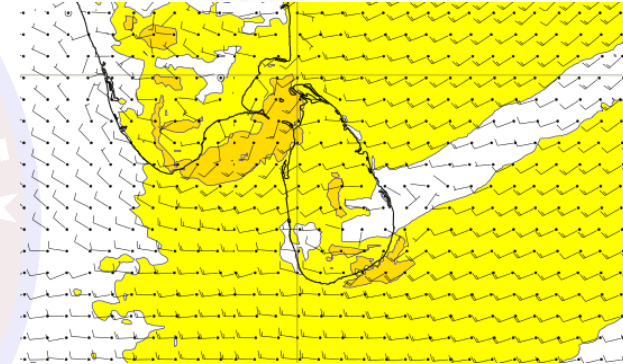
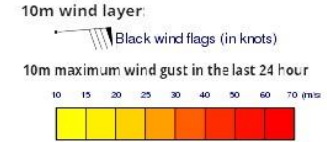
Wind and Rainfall Forecast (Total precipitation for 24 hrs)



Significant wave height (in meters)



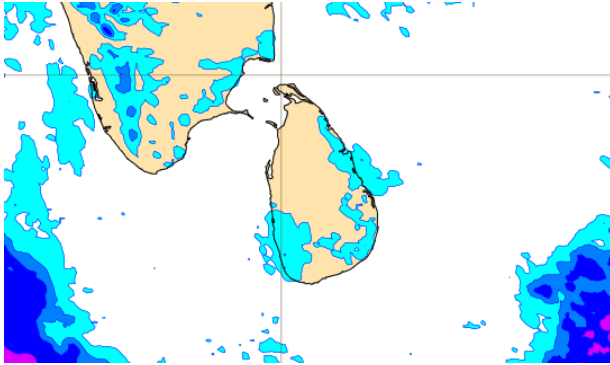
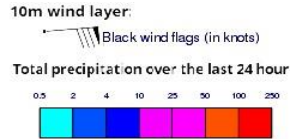
Wind Gust (m/s)



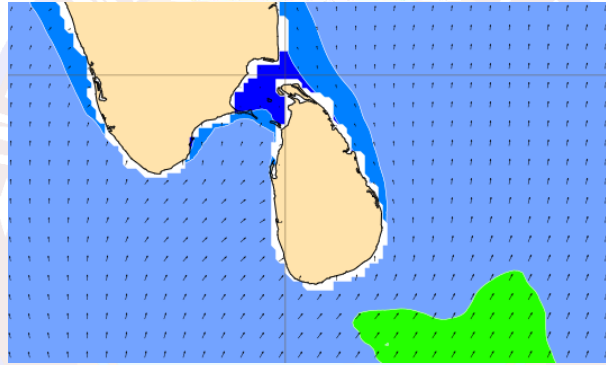
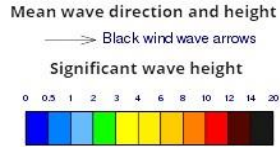
Mainly fair weather will prevail over sea areas around the island.

Wind speed will be 30-40 kmph in the sea areas around the island. The sea areas extending from Puttalam to Kankasanturai via Mannar and from Hambantota to Pottuvil can be fairly rough at times as the wind speed can increase up to 50 kmph.

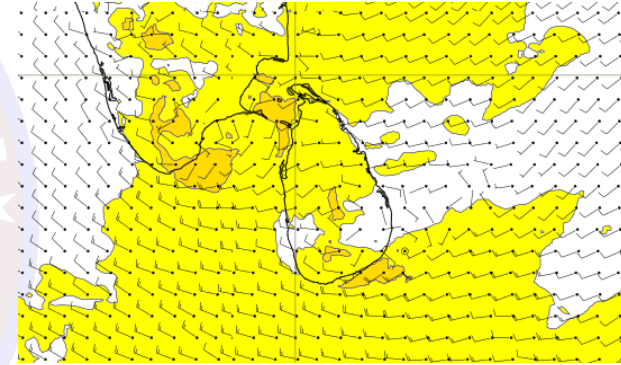
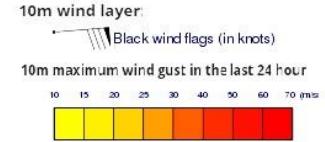
Wind and Rainfall Forecast (Total precipitation for 24 hrs)



Significant wave height (in meters)



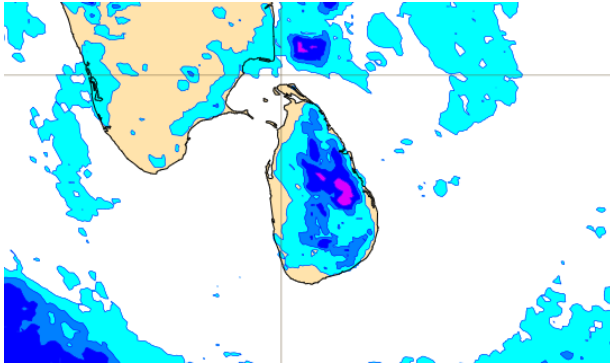
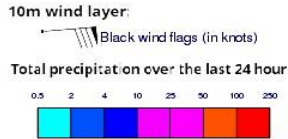
Wind Gust (m/s)



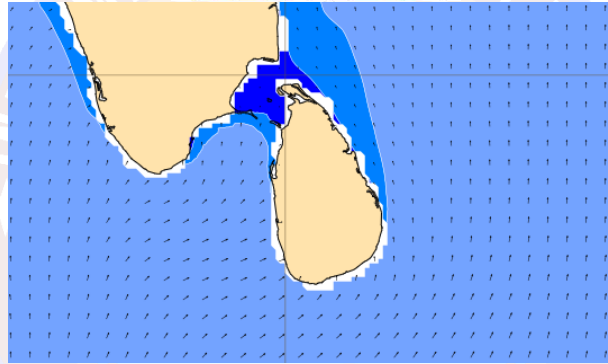
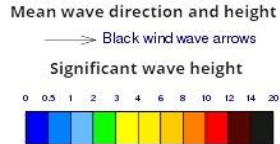
Mainly fair weather will prevail over sea areas around the island.

Wind speed will be 30-40 kmph in the sea areas around the island. The sea areas extending from Puttalam to Kankasanturai via Mannar and from Hambantota to Pottuvil can be fairly rough at times as the wind speed can increase up to 50 kmph.

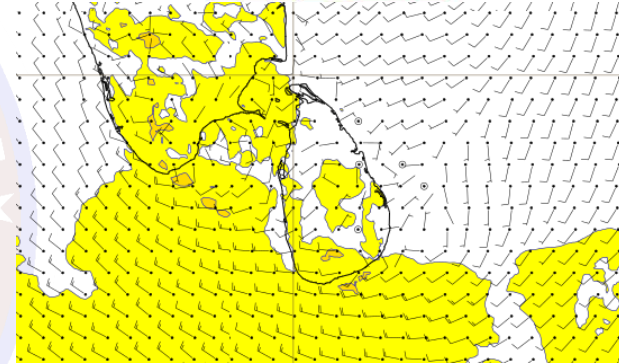
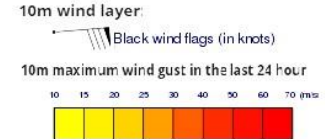
Wind and Rainfall Forecast (Total precipitation for 24 hrs)



Significant wave height (in meters)



Wind Gust (m/s)



Mainly fair weather will prevail over sea areas around the island.

Wind speed will be 20-30 kmph in the sea areas around the island. The sea areas extending from Puttalam to Kankasanturai via Mannar and from Hambantota to Pottuvil can be fairly rough at times as the wind speed can increase up to 40-45 kmph.