



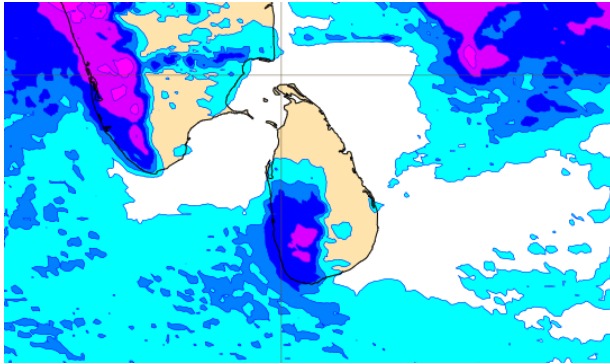
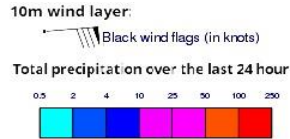
INFORMATION FUSION CENTRE COLOMBO

8 DAY FORECAST FOR COASTAL AREAS AROUND SRI LANKA

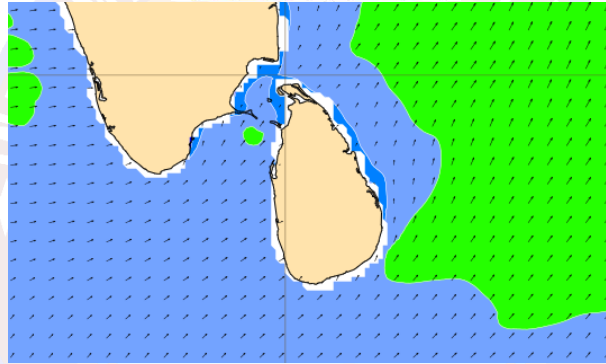
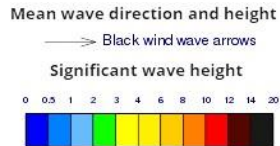
Issued at 10.00 p.m. on 09 September 2022
Marine Weather Division, National Meteorological Centre, Department of
Meteorology.



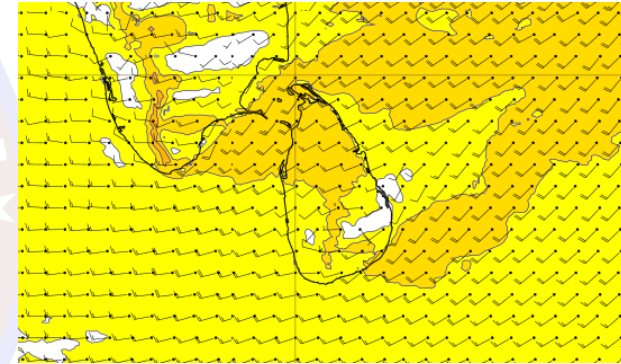
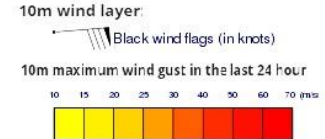
Wind and Rainfall Forecast (Total precipitation for 24 hrs)



Significant wave height (in meters)



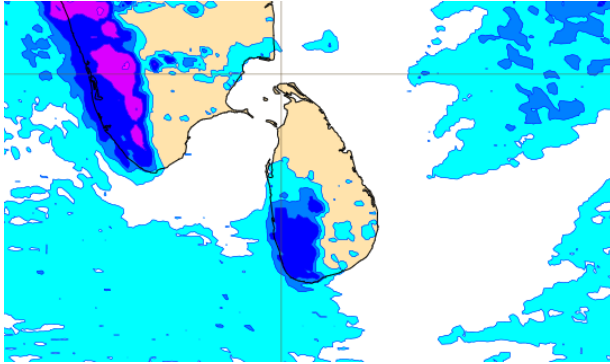
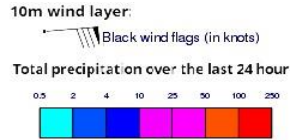
Wind Gust (m/s)



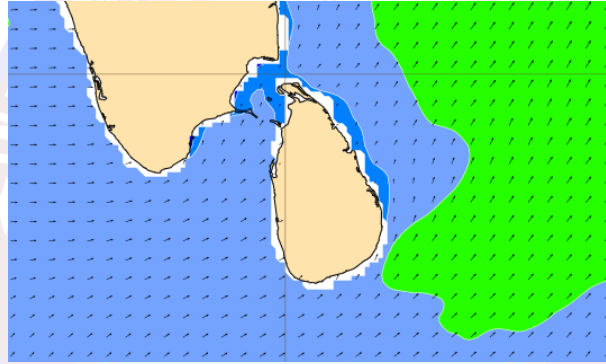
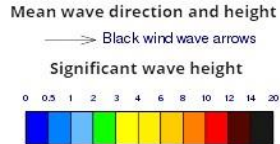
Showers will occur at several places in the sea areas off the coast extending from Puttalam to Matara via Colombo and Galle.

Wind speed will be 30-40kmph in the sea areas around the island. The sea areas extending from Puttalam to Kankasanturai via Mannar and from Hambantota to Pottuvil can be rough at times as the wind speed can increase up to 50-55kmph. The sea areas extending from Puttalam to Galle via Colombo can also be fairly rough at times as the wind speed can increase up to 50kmph.

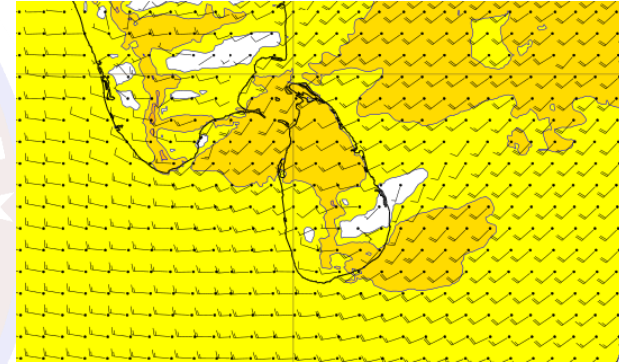
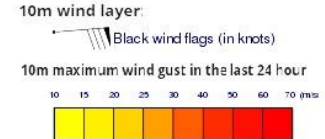
Wind and Rainfall Forecast (Total precipitation for 24 hrs)



Significant wave height (in meters)



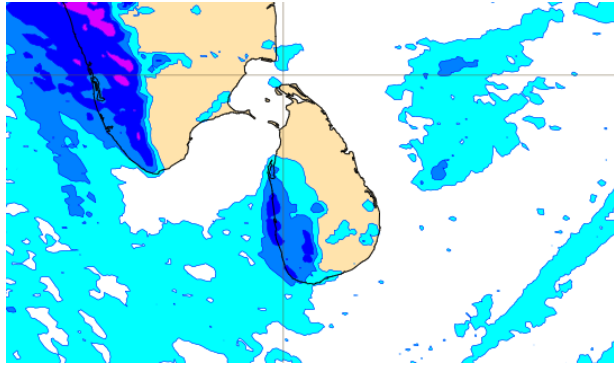
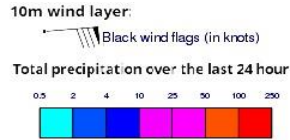
Wind Gust (m/s)



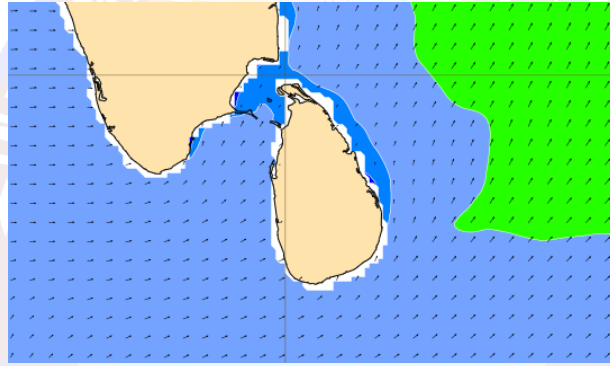
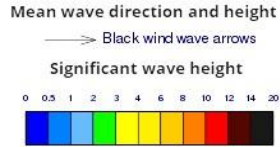
Showers will occur at several places in the sea areas off the coast extending from Puttalam to Matara via Colombo and Galle.

Wind speed will be 30-40kmph in the sea areas around the island. The sea areas extending from Puttalam to Kankasanturai via Mannar and from Hambantota to Pottuvil can be rough at times as the wind speed can increase up to 50-55kmph. The sea areas extending from Puttalam to Galle via Colombo can also be fairly rough at times as the wind speed can increase up to 50kmph.

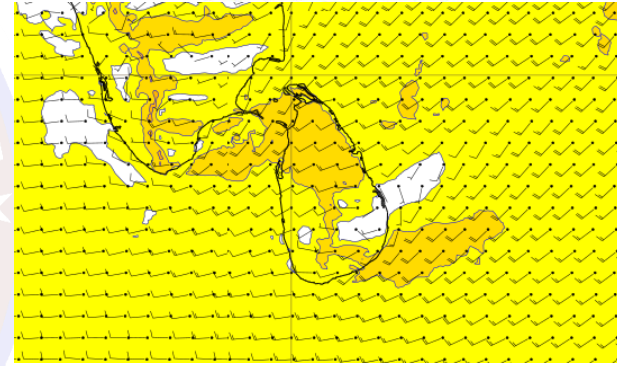
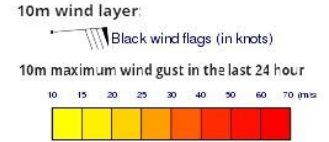
Wind and Rainfall Forecast (Total precipitation for 24 hrs)



Significant wave height (in meters)



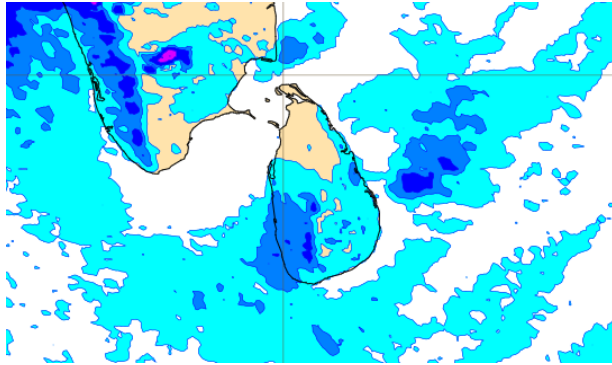
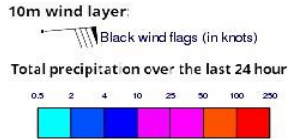
Wind Gust (m/s)



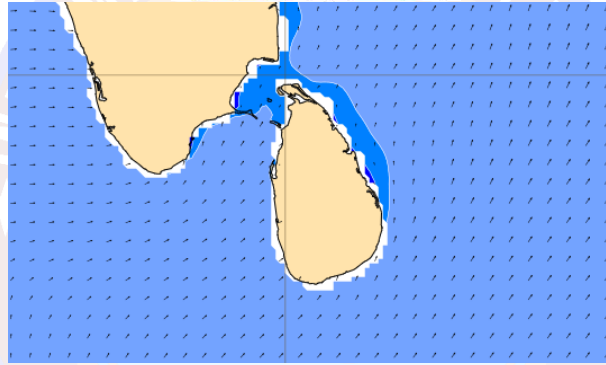
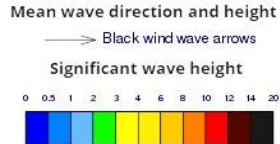
A few showers are likely in the sea areas off the coast extending from Puttalam to Matara via Colombo and Galle.

Wind speed will be 30-40kmph in the sea areas around the island. The sea areas extending from Puttalam to Kankasanturai via Mannar and from Hambantota to Pottuvil can be rough at times as the wind speed can increase up to 50-55kmph.

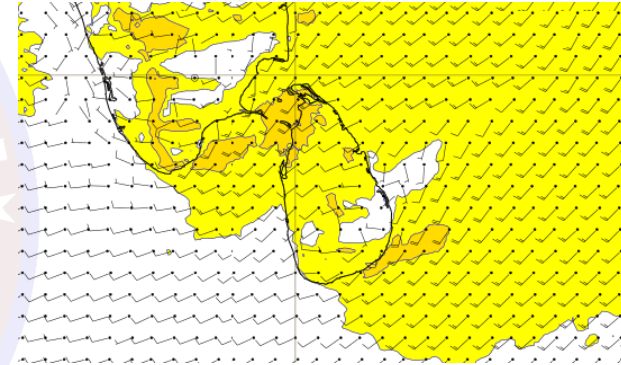
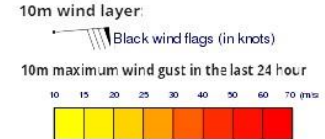
Wind and Rainfall Forecast (Total precipitation for 24 hrs)



Significant wave height (in meters)



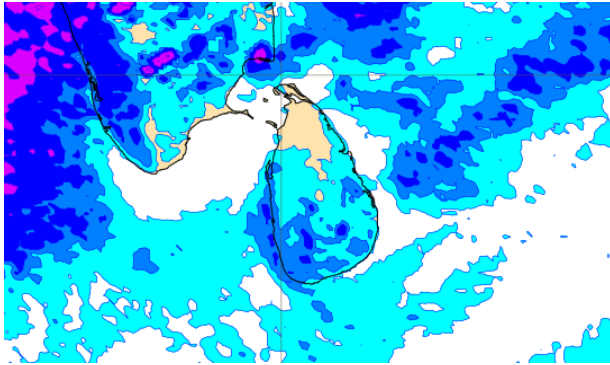
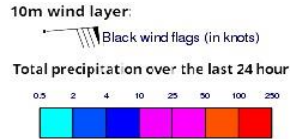
Wind Gust (m/s)



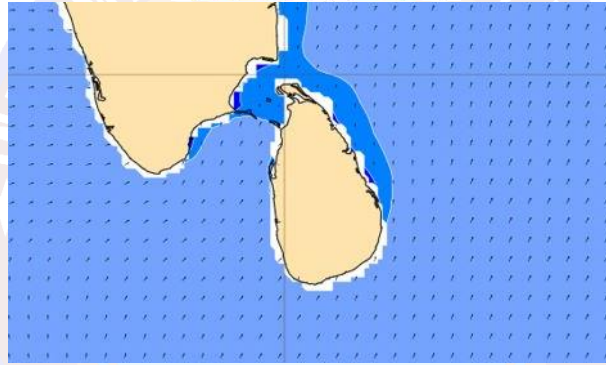
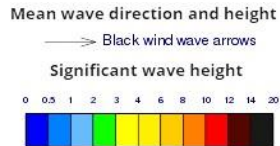
A few showers are likely in the sea areas off the coast extending from Puttalam to Matara via Colombo and Galle..

Wind speed will be 30-40kmph in the sea areas around the island. The sea areas extending from Puttalam to Kankasanturai via Mannar and from Hambantota to Pottuvil can be rough at times as the wind speed can increase up to 50-55kmph.

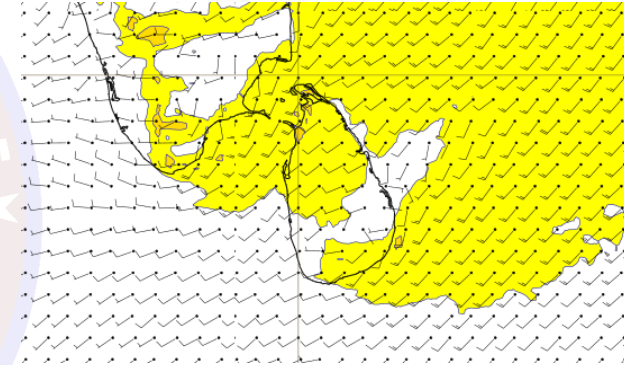
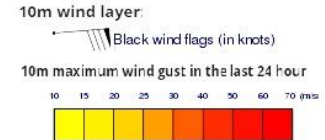
Wind and Rainfall Forecast (Total precipitation for 24 hrs)



Significant wave height (in meters)



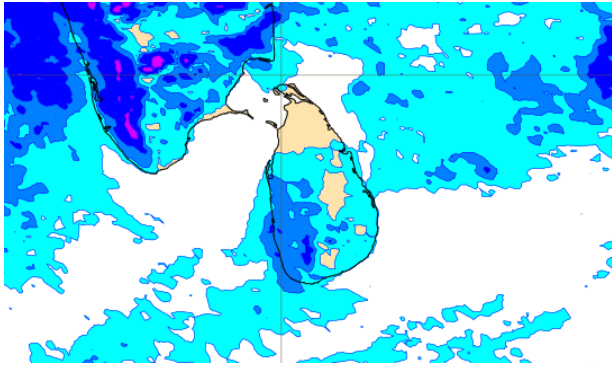
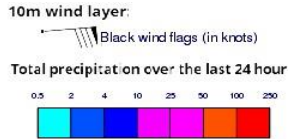
Wind Gust (m/s)



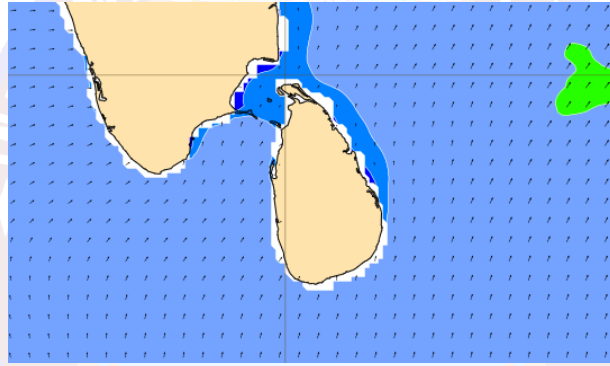
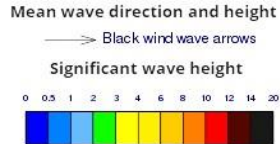
A few showers are likely in the sea areas off the coast extending from Puttalam to Matara via Colombo and Galle.

Wind speed will be 30-40kmph in the sea areas around the island. The sea areas extending from Puttalam to Kankasanturai via Mannar and from Hambantota to Pottuvil can be fairly rough at times as the wind speed can increase up to 50kmph.

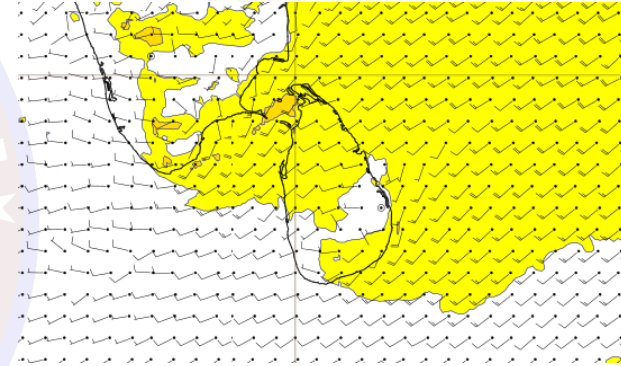
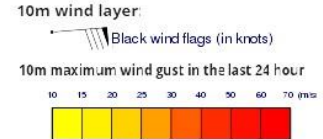
Wind and Rainfall Forecast (Total precipitation for 24 hrs)



Significant wave height (in meters)



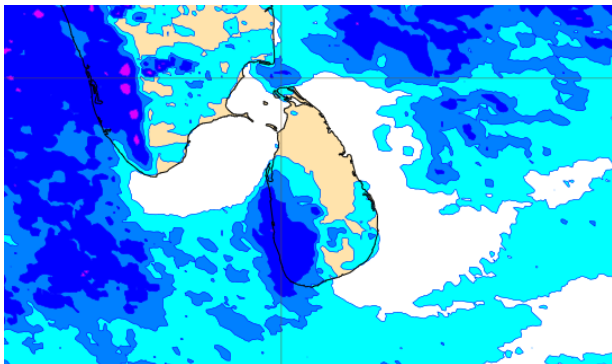
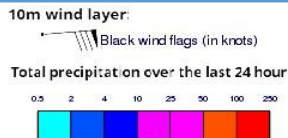
Wind Gust (m/s)



A few showers are likely in the sea areas off the coast extending from Puttalam to Matara via Colombo and Galle.

Wind speed will be 30-40kmph in the sea areas around the island. The sea areas extending from Puttalam to Kankasanturai via Mannar and from Hambantota to Pottuvil can be fairly rough at times as the wind speed can increase up to 50kmph.

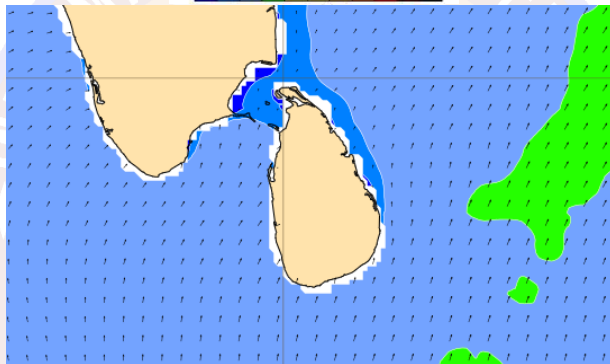
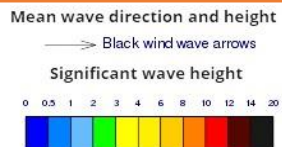
Wind and Rainfall Forecast (Total precipitation for 24 hrs)



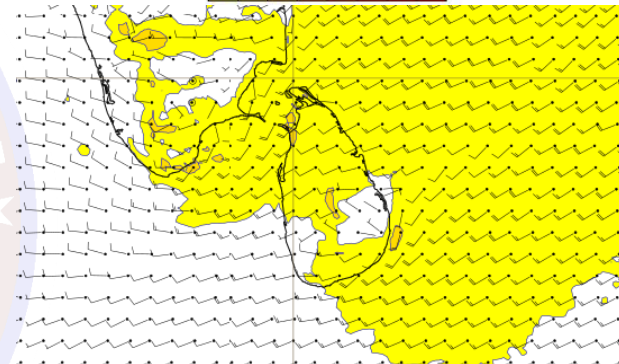
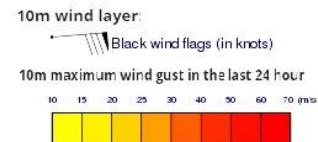
Showers or thundershower will occur at a few places in the sea areas off the coast extending from Puttalam to Matara via Colombo and Galle.

Wind speed will be 30-40 kmph in the sea areas around the island. The sea areas extending from Kankasanturai to Colombo via Puttalam and the sea area extending from Galle to Pottuvil via Hambantota can be rough at times as wind speed can increase up to 50 kmph.

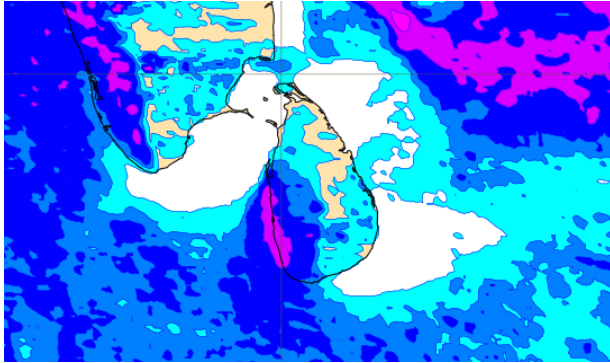
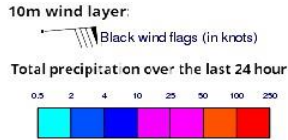
Significant wave height (in meters)



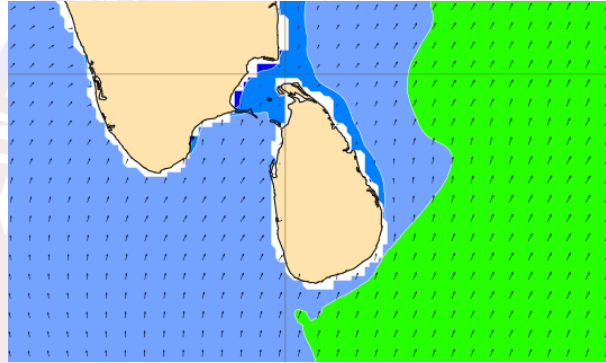
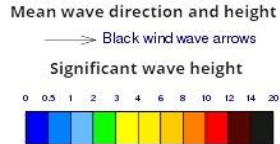
Wind Gust (m/s)



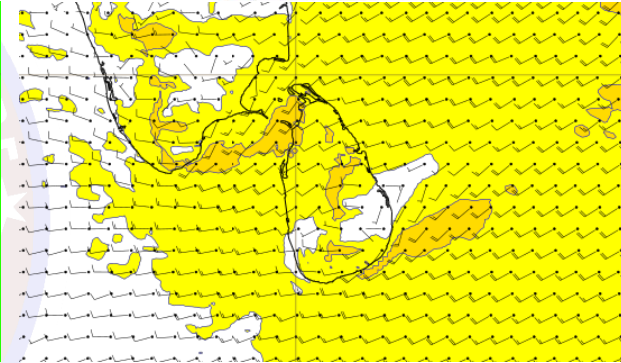
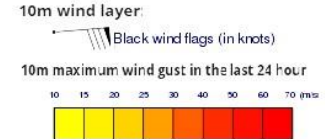
Wind and Rainfall Forecast (Total precipitation for 24 hrs)



Significant wave height (in meters)



Wind Gust (m/s)



Showers will occur at several places in the sea areas off the coast extending from Puttalam to Matara via Colombo and Galle.

Wind speed will be 30-40kmph in the sea areas around the island. The sea areas extending from Puttalam to Kankasanturai via Mannar and from Hambantota to Pottuvil can be fairly rough at times as the wind speed can increase up to 50kmph.