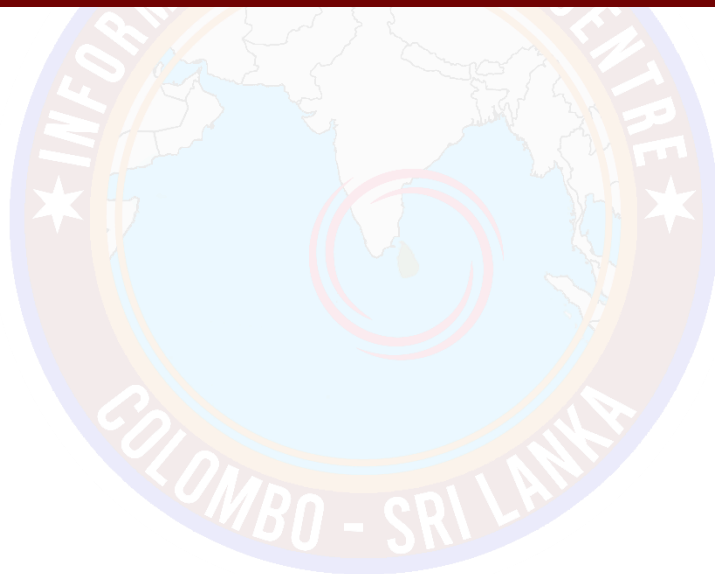




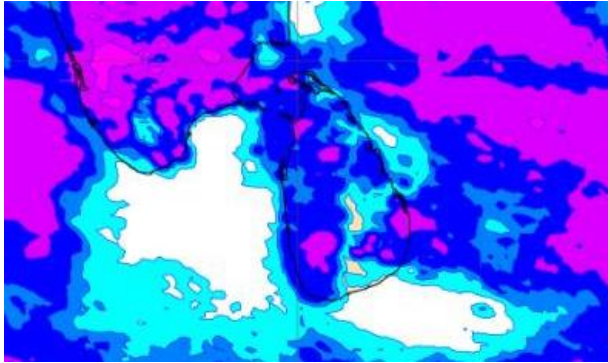
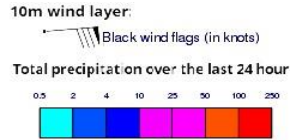
INFORMATION FUSION CENTRE COLOMBO

8 DAY FORECAST FOR COASTAL AREAS AROUND SRI LANKA

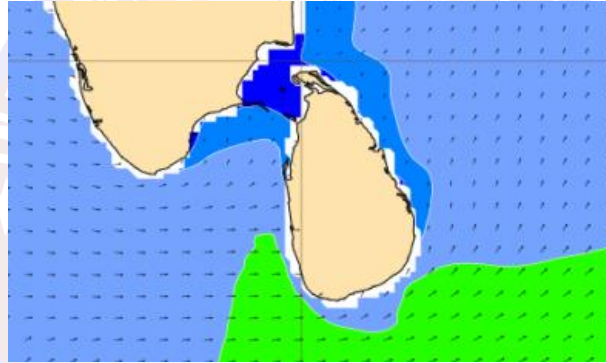
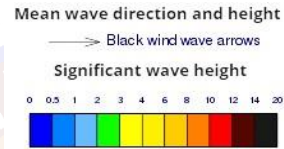
Issued at 10.00 p.m. on 24 August 2022
Marine Weather Division, National Meteorological Centre, Department of
Meteorology.



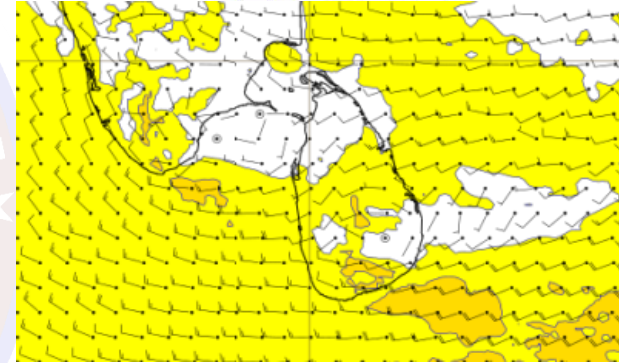
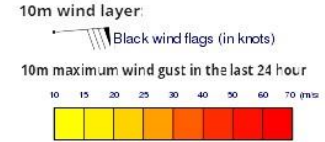
Wind and Rainfall Forecast (Total precipitation for 24 hrs)



Significant wave height (in meters)



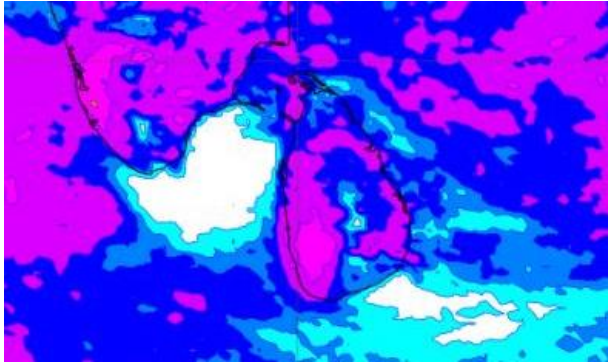
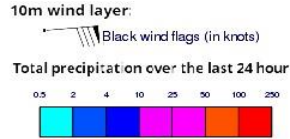
Wind Gust (m/s)



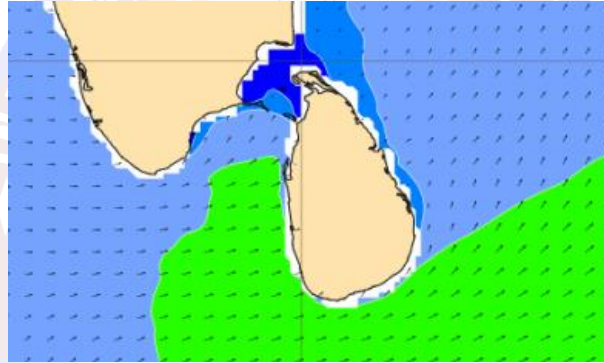
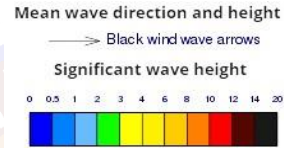
Showers or thundershower may occur at times in the sea areas off the coast extending from Colombo to Matara via Galle.

Wind speed will be 20-40 kmph in the sea areas around the island. The sea areas extending from Galle to Pottuvil via Hambantota can be rough at times as wind speed can increase up to 55-60 kmph.

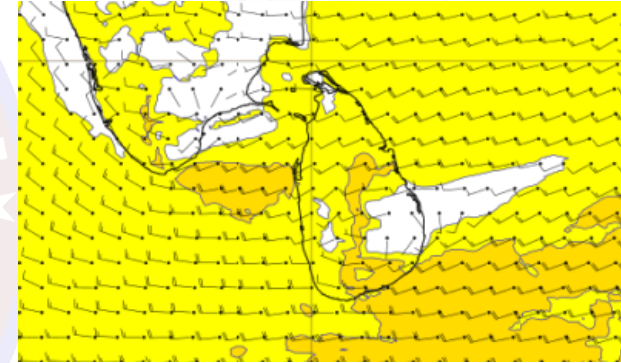
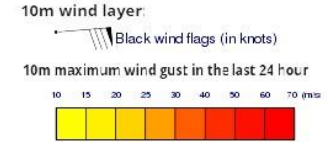
Wind and Rainfall Forecast (Total precipitation for 24 hrs)



Significant wave height (in meters)



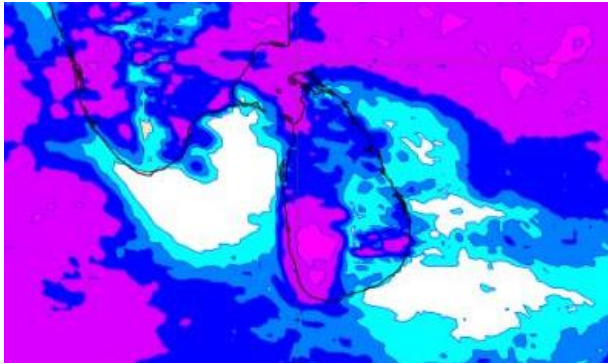
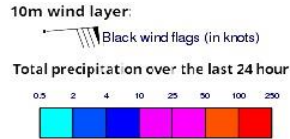
Wind Gust (m/s)



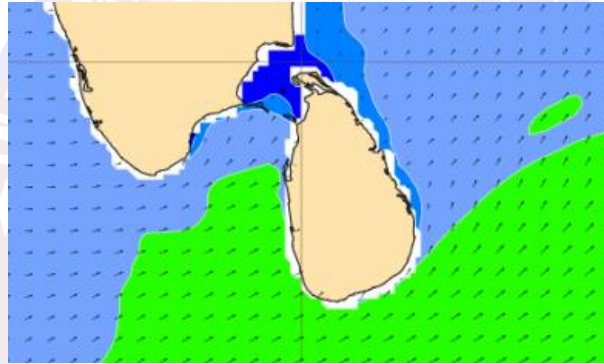
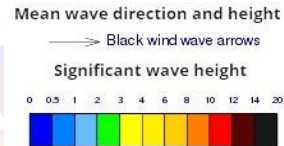
Showers or thundershower will occur at several places in the sea areas off the coast extending from Colombo to Matara via Galle. Thundershowers may occur at a few places in the other sea areas particularly during the afternoon.

Wind speed will be 20-40 kmph in the sea areas around the island. The sea areas extending from Galle to Pottuvil via Hambantota can be rough at times as wind speed can increase up to 55-60 kmph.

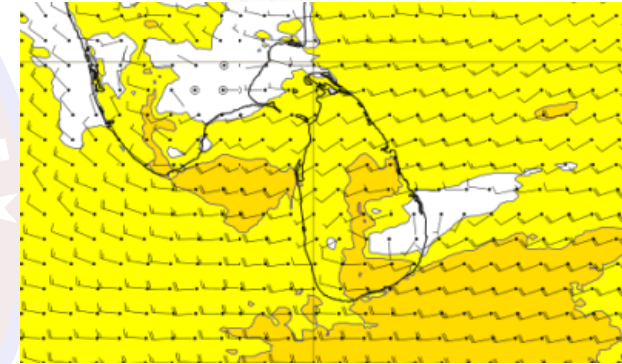
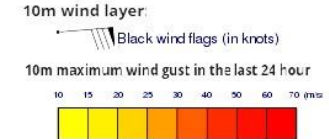
Wind and Rainfall Forecast (Total precipitation for 24 hrs)



Significant wave height (in meters)



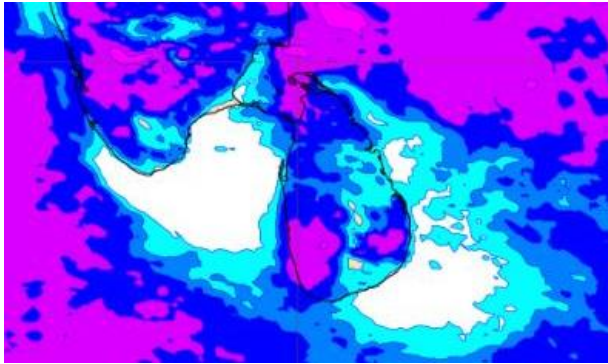
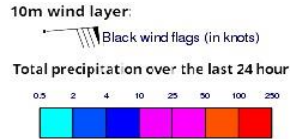
Wind Gust (m/s)



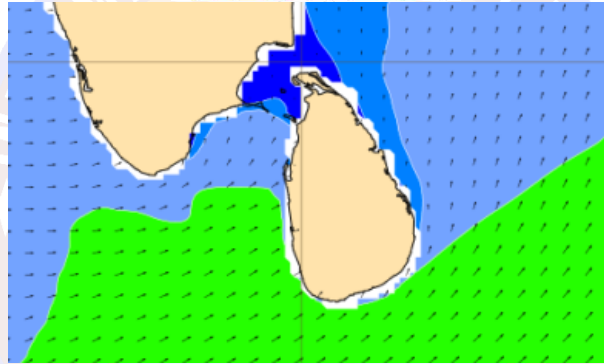
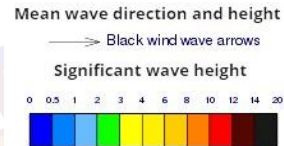
Showers or thundershower will occur at times in the sea areas off the coast extending from Colombo to Matara via Galle. Thundershowers may occur at a few places in the other sea areas particularly during the afternoon

Wind speed will be 25-35 kmph in the sea areas around the island. The sea areas extending from Galle to Pottuvil via Hambantota can be rough at times as wind speed can increase up to 45-55 kmph.

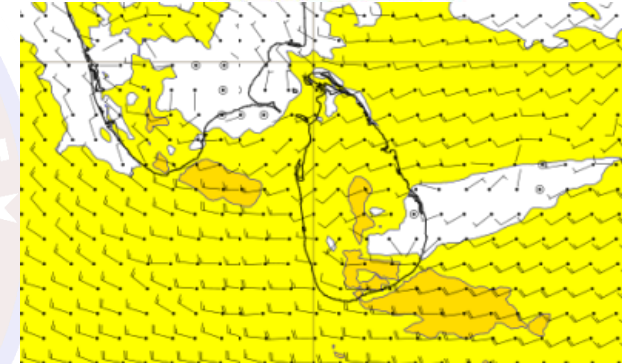
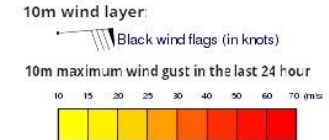
Wind and Rainfall Forecast (Total precipitation for 24 hrs)



Significant wave height (in meters)



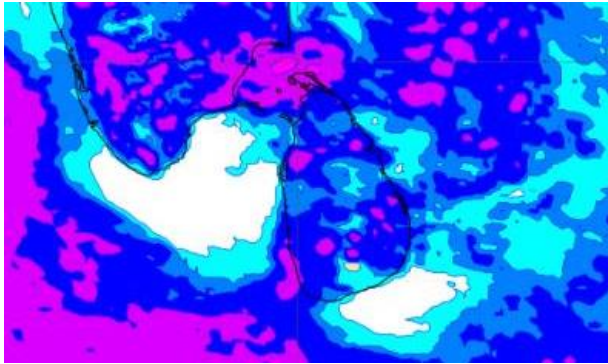
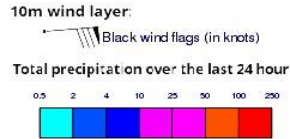
Wind Gust (m/s)



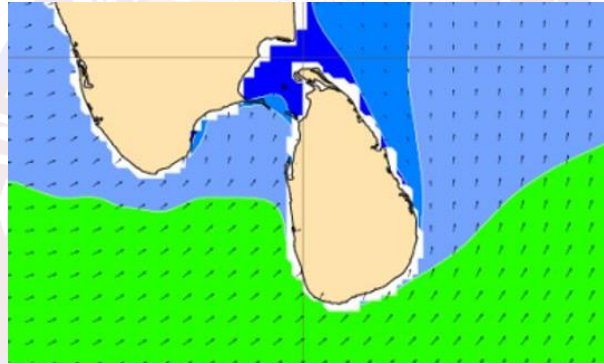
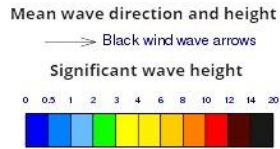
Showers or thundershower will occur at several places in the sea areas off the coast extending from Colombo to Matara via Galle. Thundershowers may occur at several places in the other sea areas particularly during the afternoon.

Wind speed will be 25-35 kmph in the sea areas around the island. The sea areas extending from to Galle to Pottuvil via Hambantota can be rough at times as wind speed can increase up to 45-55 kmph.

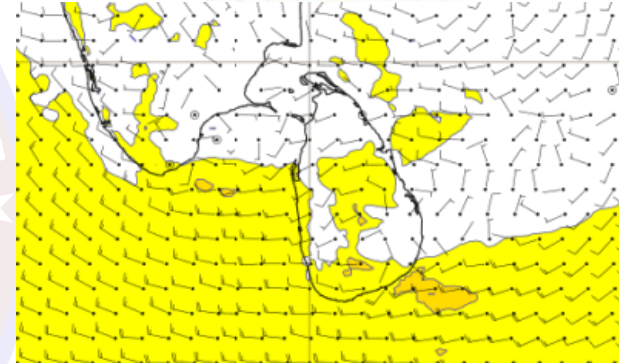
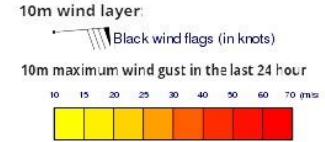
Wind and Rainfall Forecast (Total precipitation for 24 hrs)



Significant wave height (in meters)



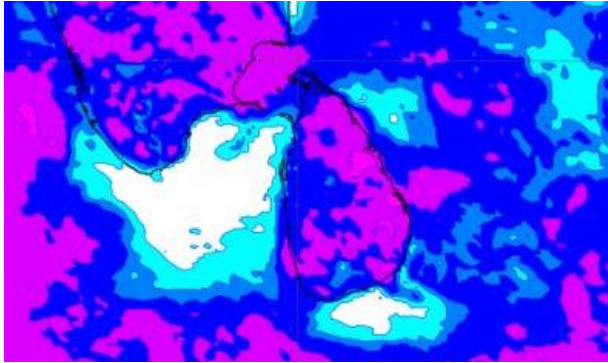
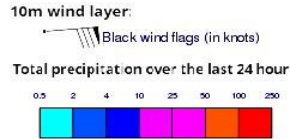
Wind Gust (m/s)



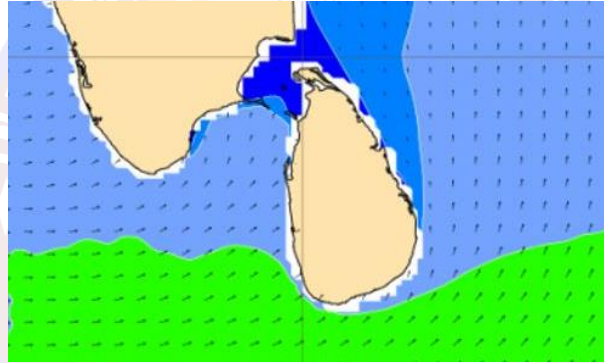
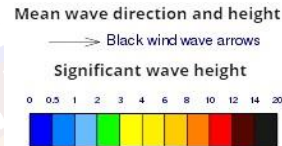
Showers or thundershower will occur at several places in the sea areas off the coast extending from Puttalam to Matara via Colombo to Galle. Thundershowers may occur at several places in the other sea areas particularly during the afternoon.

Wind speed will be 25-35 kmph in the sea areas around the island. The sea areas extending from Hambantota to Pottuvil can be rough at times as wind speed can increase up to 45-55 kmph.

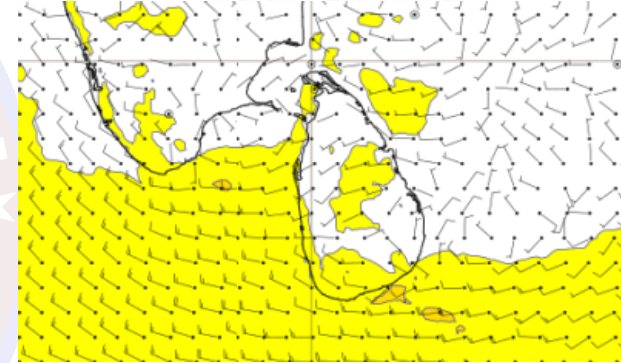
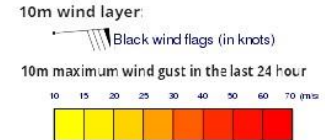
Wind and Rainfall Forecast (Total precipitation for 24 hrs)



Significant wave height (in meters)



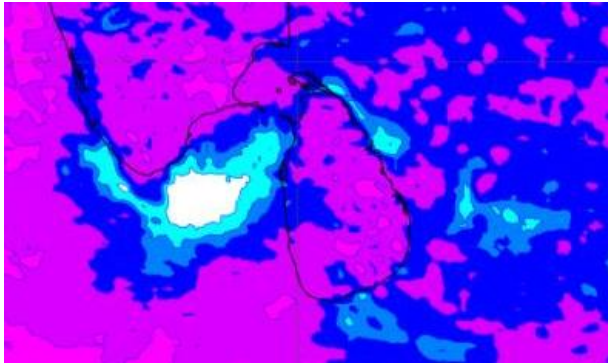
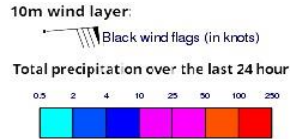
Wind Gust (m/s)



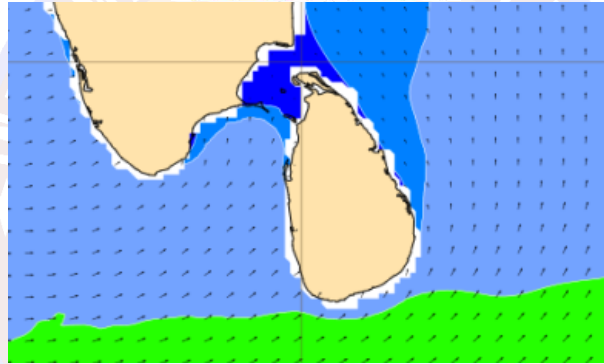
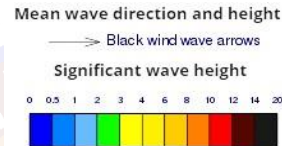
Showers or thundershower will occur at several places in the sea areas off the coast extending from Puttalam to Matara via Colombo to Galle. Thundershowers may occur at several places in the other sea areas particularly during the afternoon.

Wind speed will be 25-35 kmph in the sea areas around the island.

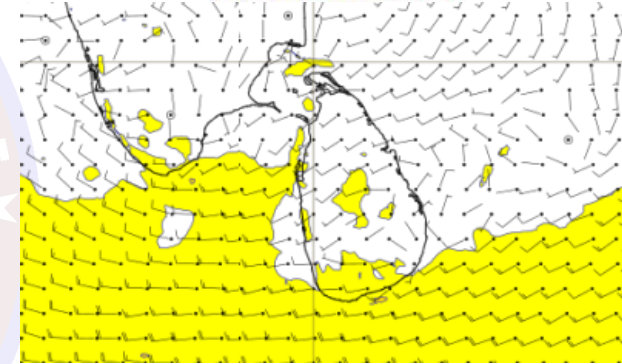
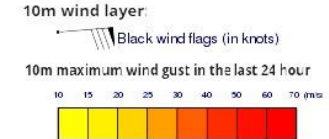
Wind and Rainfall Forecast (Total precipitation for 24 hrs)



Significant wave height (in meters)



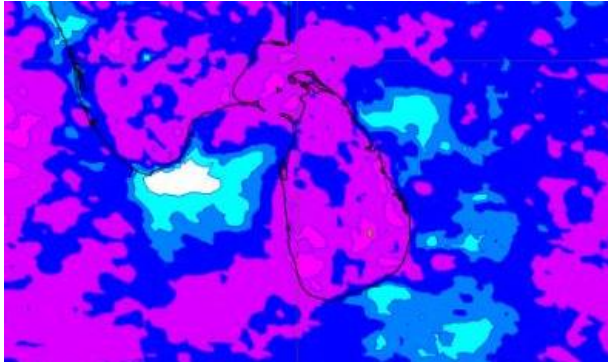
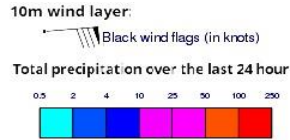
Wind Gust (m/s)



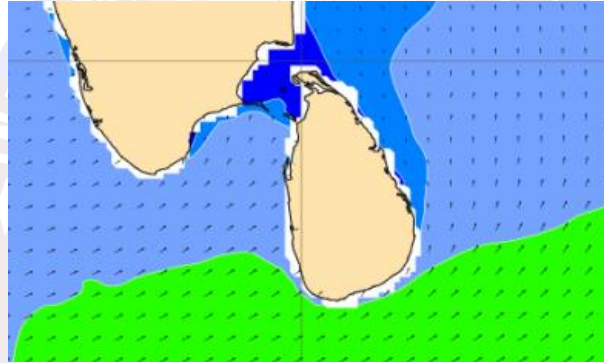
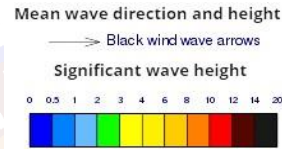
Showers or thundershower will occur at several places in the sea areas off the coast extending from Puttalam to Matara via Colombo to Galle. Thundershowers may occur at several places in the other sea areas particularly during the afternoon.

Wind speed will be 25-35 kmph in the sea areas around the island.

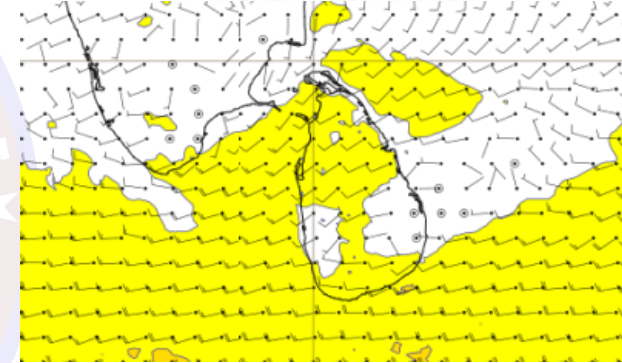
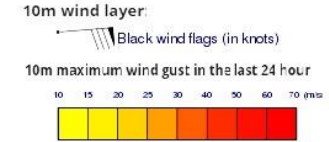
Wind and Rainfall Forecast (Total precipitation for 24 hrs)



Significant wave height (in meters)



Wind Gust (m/s)



Showers or thundershower will occur at several places in the sea areas off the coast extending from Puttalam to Matara via Colombo to Galle. Thundershowers may occur at several places in the other sea areas particularly during the afternoon.

Wind speed will be 20-40 kmph in the sea areas around the island.