



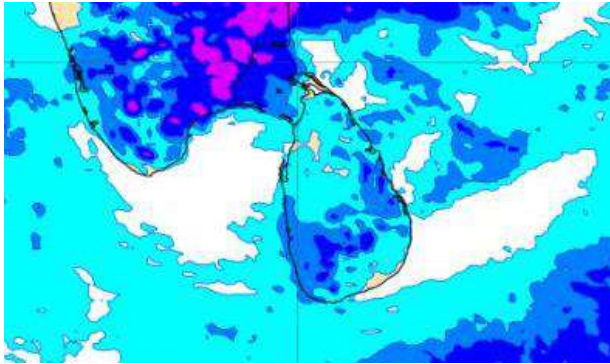
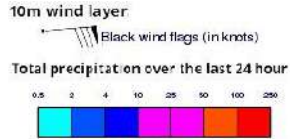
INFORMATION FUSION CENTRE COLOMBO

8 DAY FORECAST FOR COASTAL AREAS AROUND SRI LANKA

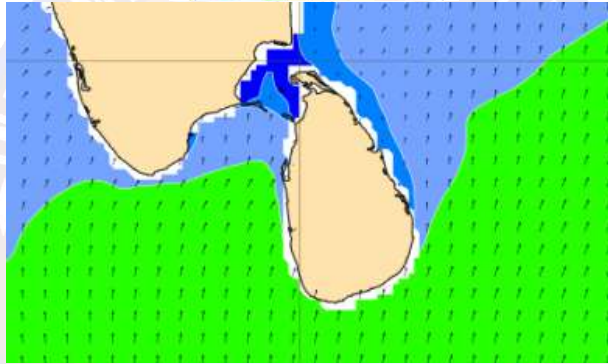
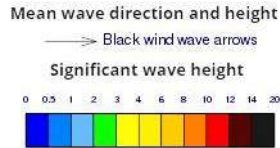
Issued at 10.00 p.m. on 16 August 2022
Marine Weather Division, National Meteorological Centre, Department of
Meteorology.



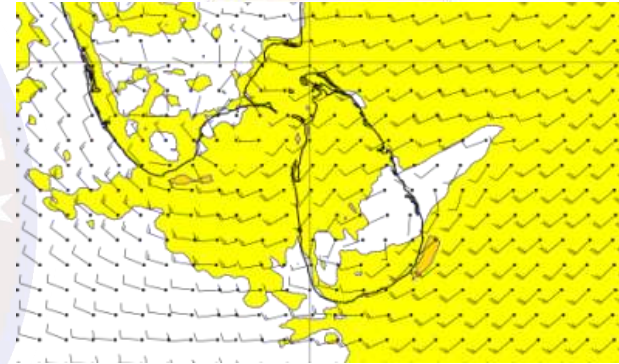
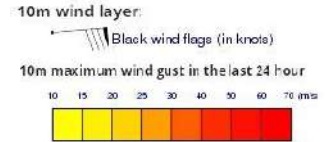
Wind and Rainfall Forecast (Total precipitation for 24 hrs)



Significant wave height (in meters)



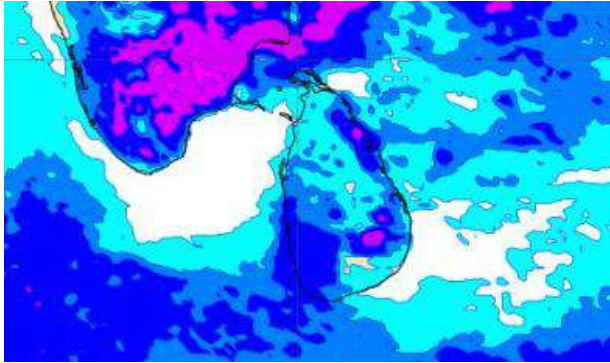
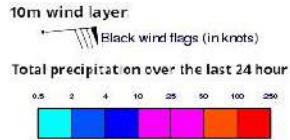
Wind Gust (m/s)



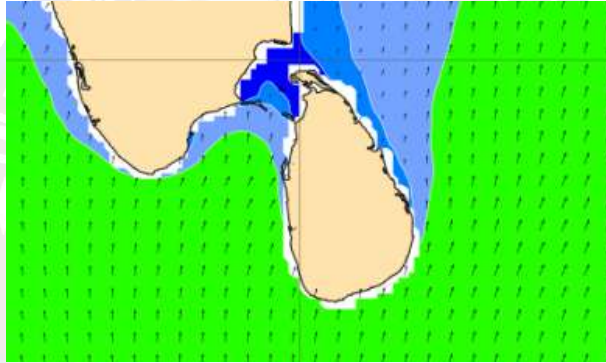
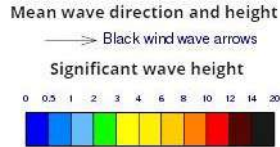
Mainly fair weather will prevail over sea areas around the island.

Wind speed will be 20-30 kmph in the sea areas around the island. The sea areas extending from Hambantota to Pottuvil can be fairly rough at times as wind speed can increase up to 40-45 kmph.

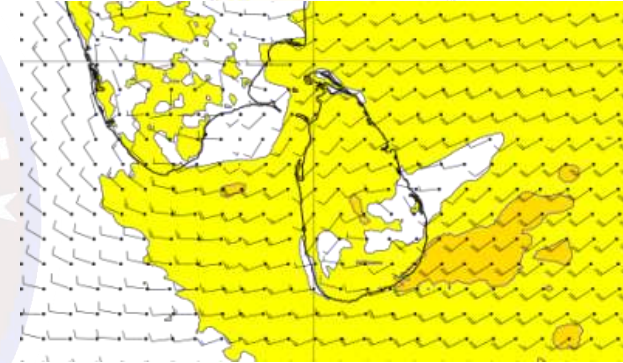
Wind and Rainfall Forecast (Total precipitation for 24 hrs)



Significant wave height (in meters)



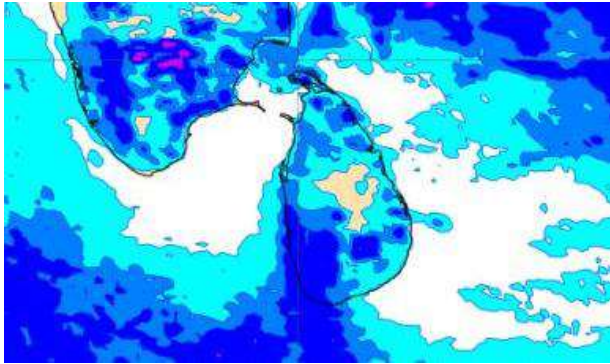
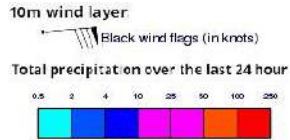
Wind Gust (m/s)



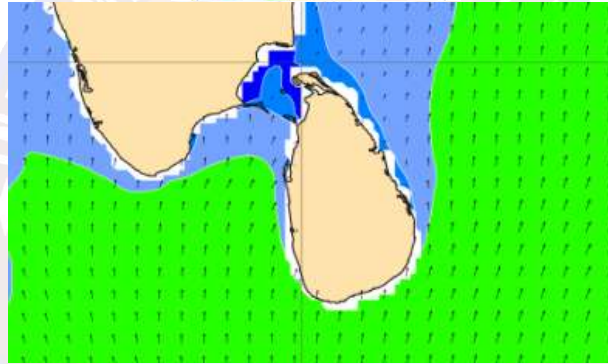
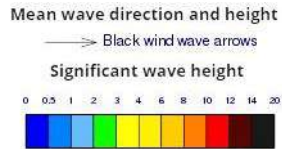
A few showers are likely in sea areas off the coast extending from Colombo to Galle.

Wind speed will be 25-35 kmph in the sea areas around the island. The sea areas extending from Hambantota to Pottuvil can be fairly rough at times as wind speed can increase up to 45 kmph.

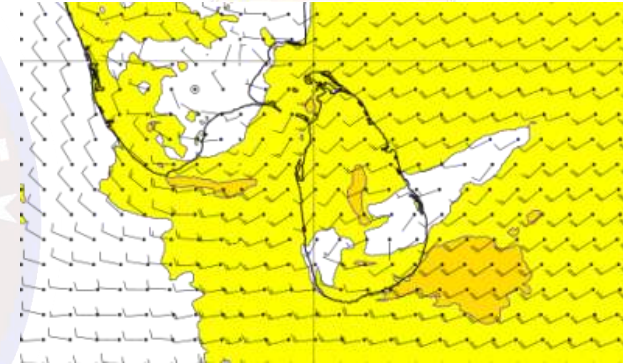
Wind and Rainfall Forecast (Total precipitation for 24 hrs)



Significant wave height (in meters)



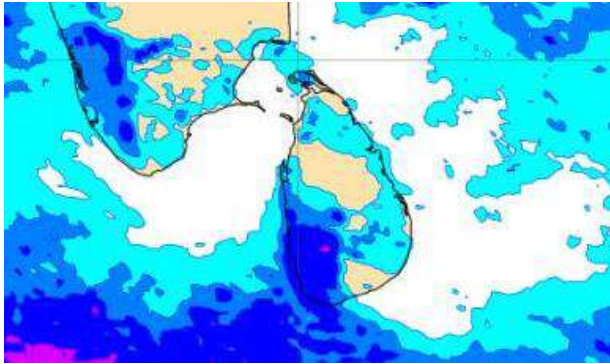
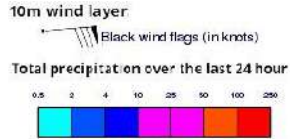
Wind Gust (m/s)



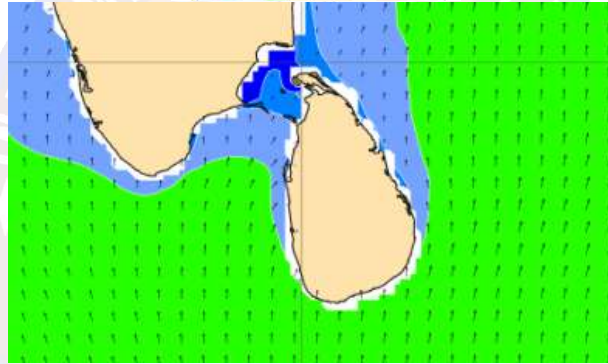
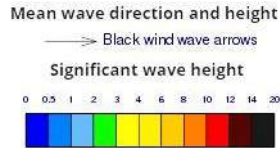
A few showers are likely in sea areas off the coast extending from Colombo to Galle.

Wind speed will be 25-35 kmph in the sea areas around the island. The sea areas extending from Hambantota to Pottuvil can be fairly rough at times as wind speed can increase up to 45 kmph.

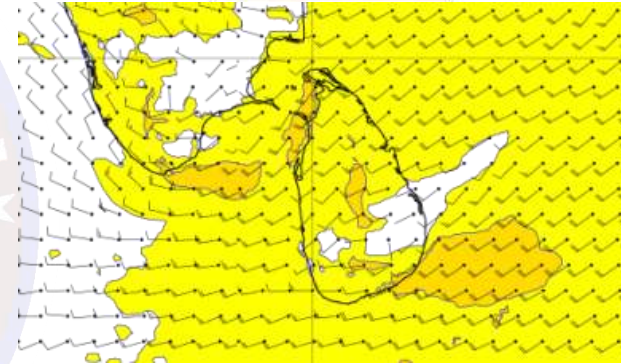
Wind and Rainfall Forecast (Total precipitation for 24 hrs)



Significant wave height (in meters)



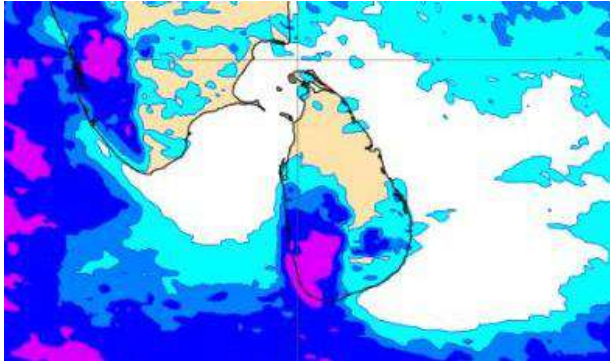
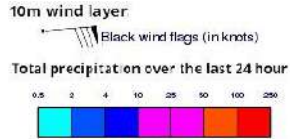
Wind Gust (m/s)



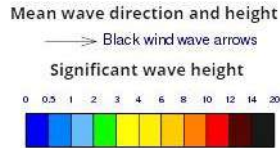
A few showers are likely in sea areas off the coast extending from Colombo to Galle.

Wind speed will be 25-35 kmph in the sea areas around the island. The sea areas extending from Puttalam to Kankasanturai via Mannar and from Hambantota to Pottuvil can be fairly rough at times as wind speed can increase up to 45 kmph.

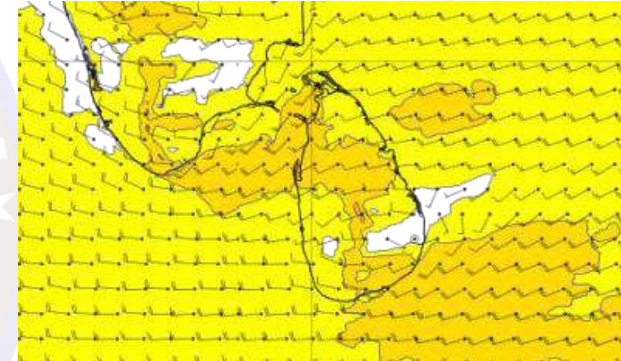
Wind and Rainfall Forecast (Total precipitation for 24 hrs)



Significant wave height (in meters)



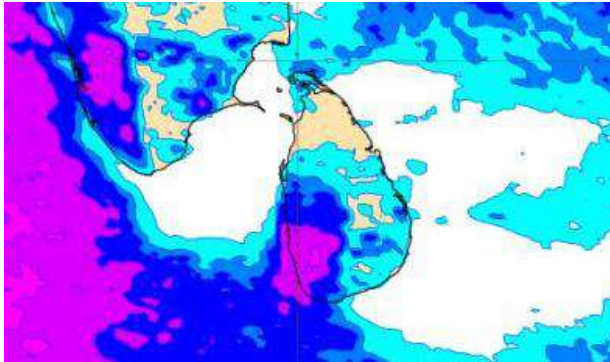
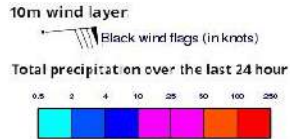
Wind Gust (m/s)



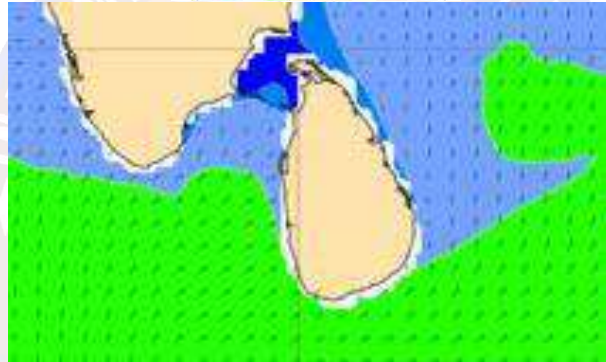
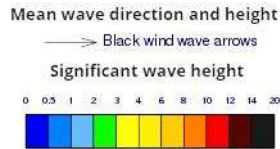
Showers may occur at a few places in the sea areas off the coast extending from Colombo to Galle.

Wind speed will be 25-35 kmph in the sea areas around the island. The sea areas extending from Puttalam to Kankasanturai via Mannar and from Hambantota to Pottuvil can be fairly rough at times as wind speed can increase up to 45 kmph.

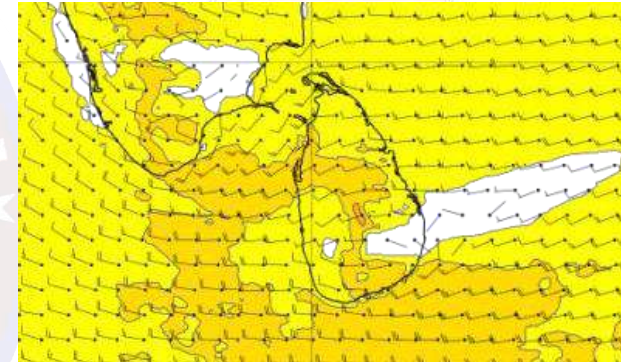
Wind and Rainfall Forecast (Total precipitation for 24 hrs)



Significant wave height (in meters)



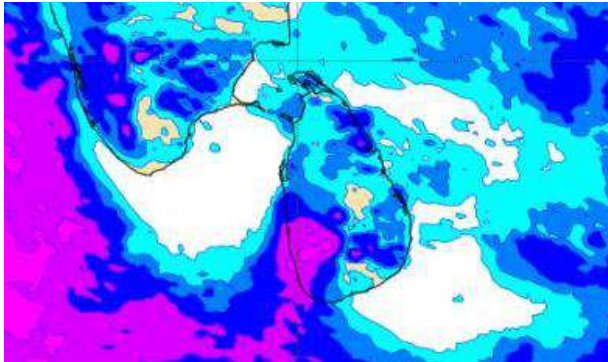
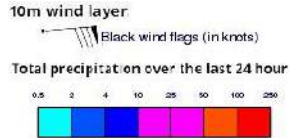
Wind Gust (m/s)



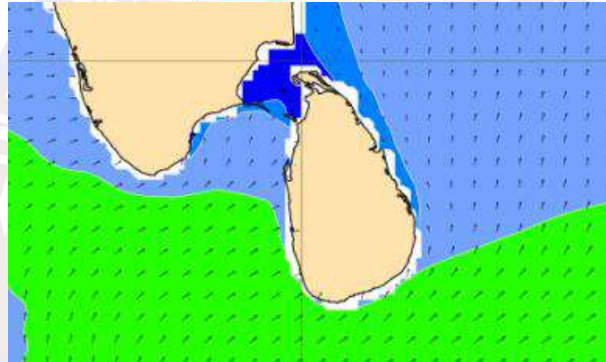
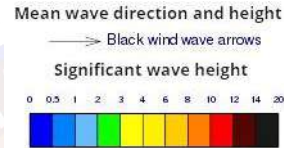
Showers may occur at several places in the sea areas off the coast extending from Colombo to Galle.

Wind speed will be 25-35 kmph in the sea areas around the island. The sea areas extending from Galle to Pottuvil via Hambantota can be fairly rough at times as wind speed can increase up to 45 kmph.

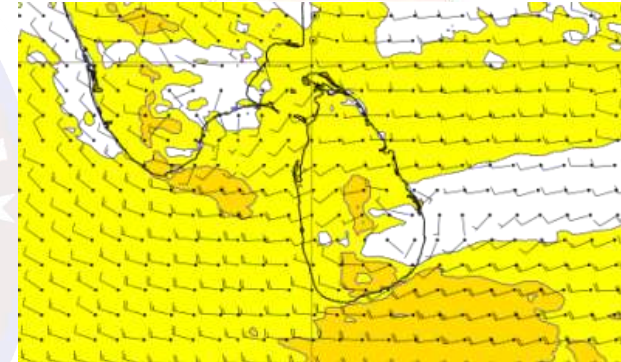
Wind and Rainfall Forecast (Total precipitation for 24 hrs)



Significant wave height (in meters)



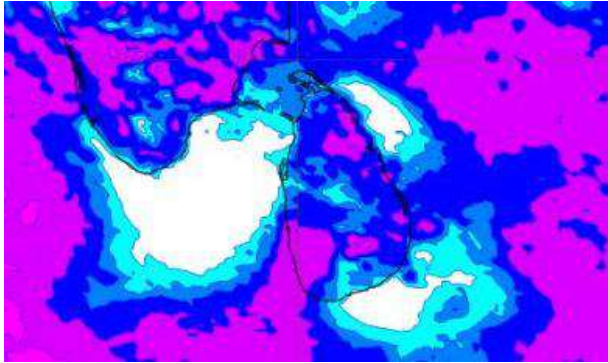
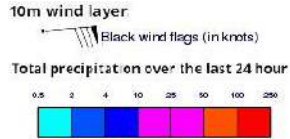
Wind Gust (m/s)



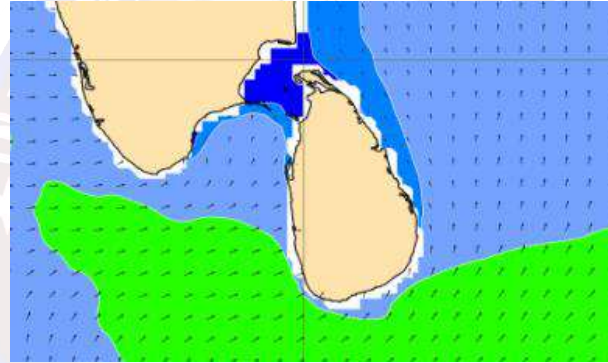
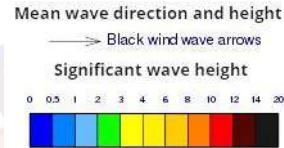
Showers may occur at several places in the sea areas off the coast extending from Colombo to Galle.

Wind speed will be 25-35 kmph in the sea areas around the island. The sea areas extending from Galle to Pottuvil via Hambantota can be fairly rough at times as wind speed can increase up to 45 kmph.

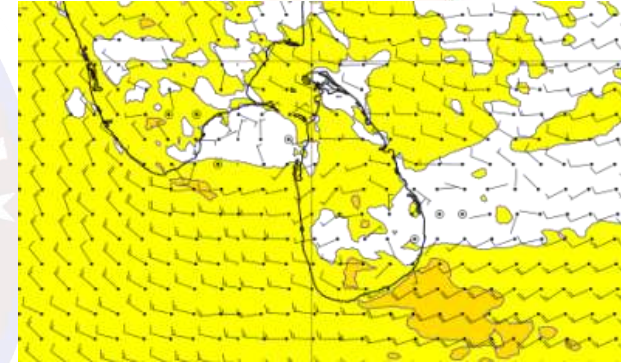
Wind and Rainfall Forecast (Total precipitation for 24 hrs)



Significant wave height (in meters)



Wind Gust (m/s)



Showers may occur at several places in the sea areas off the coast extending from Colombo to Galle.

Wind speed will be 20-30 kmph in the sea areas around the island. The sea areas extending from Hambantota to Pottuvil can be fairly rough at times as wind speed can increase up to 40-45 kmph.