



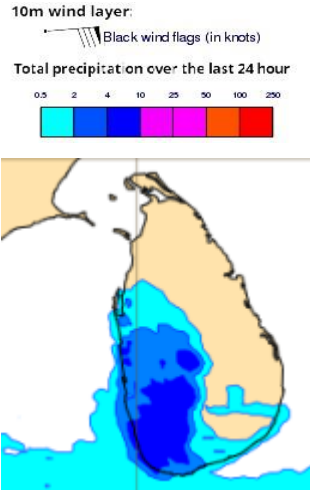
# **INFORMATION FUSION CENTRE COLOMBO**

**8 DAY FORECAST FOR COASTAL AREAS AROUND SRI LANKA**

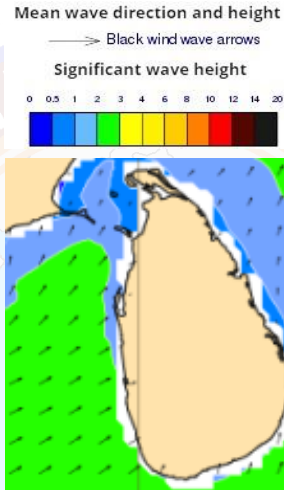
Issued at 10.00 p.m. on 08 August 2022  
Marine Weather Division, National Meteorological Centre, Department of  
Meteorology.



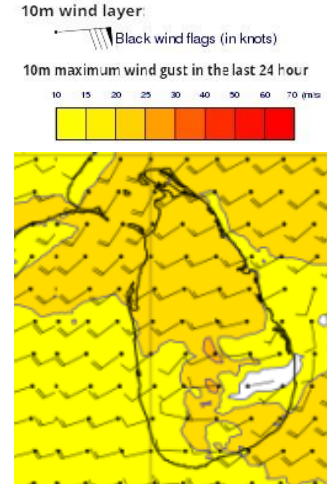
## Wind and Rainfall Forecast (Total precipitation for 24 hrs)



## Significant wave height (in meters)



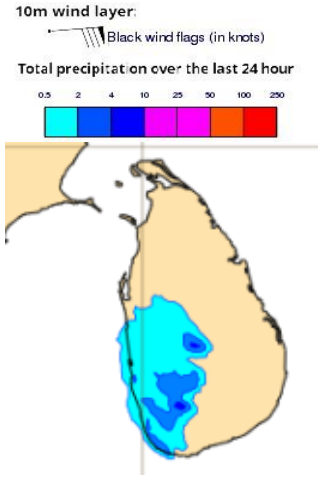
## Wind Gust (m/s)



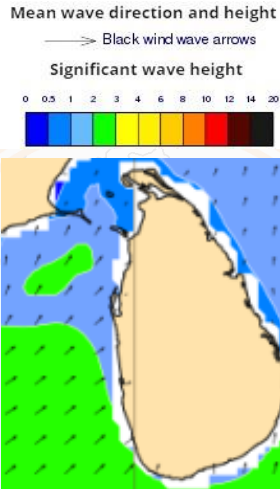
Showers or thundershowers will occur at a few places in the sea areas off the coast extending from Puttalam to Hambantota via Colombo and Galle.

Wind speed will be 30-40 kmph in the sea areas around the island. The sea areas extending from Puttalam to Trincomalee via Kankasanturai and from Hambantota to Pottuvil can be rough at times as wind speed can increase up to 50-60 kmph. The sea areas around the island can be fairly rough at times as the wind speed may increase up to 50kmph at times.

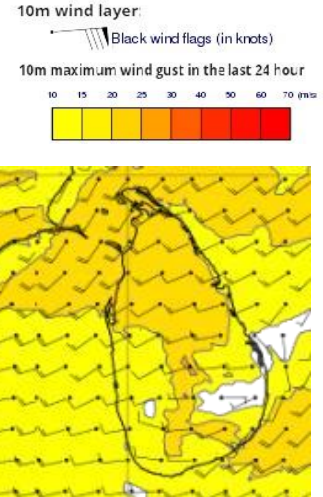
## Wind and Rainfall Forecast (Total precipitation for 24 hrs)



## Significant wave height (in meters)



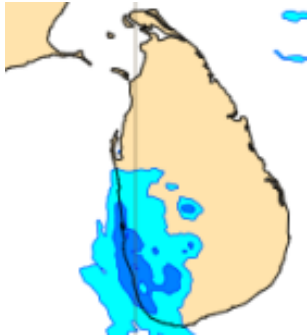
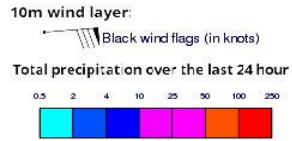
## Wind Gust (m/s)



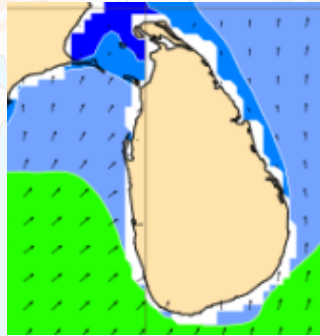
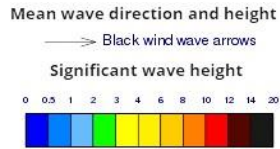
Showers or thundershowers may occur at a few places in the sea areas off the coast extending from Puttalam to Hambantota via Colombo and Galle.

Wind speed will be 30-40 kmph in the sea areas around the island. The sea areas extending from Puttalam to Trincomalee via Kankasanturai and from Hambantota to Pottuvil can be rough at times as wind speed can increase up to 50-60 kmph. The sea areas around the island can be fairly rough at times as the wind speed may increase up to 50kmph at times.

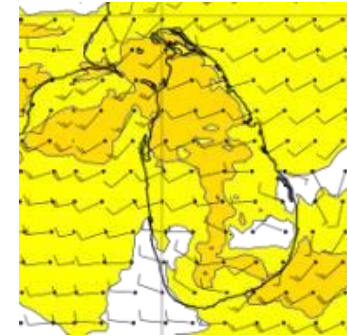
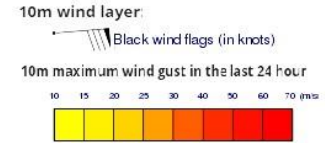
## Wind and Rainfall Forecast (Total precipitation for 24 hrs)



## Significant wave height (in meters)



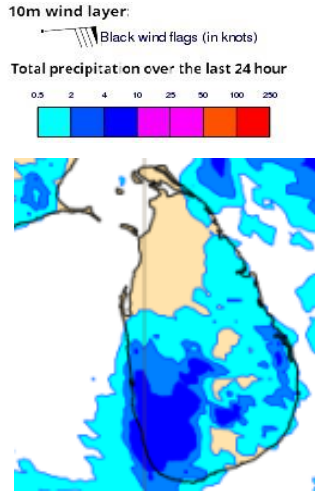
## Wind Gust (m/s)



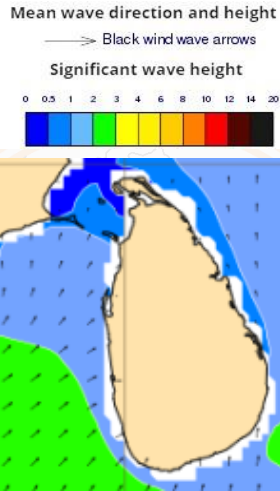
Mainly fair weather will prevail over sea areas around the island.

Wind speed will be 30-40 kmph in the sea areas around the island. The sea areas extending from Puttalam to Trincomalee via Kankasanturai and from Hambantota to Pottuvil can be rough at times as wind speed can increase up to 50-60 kmph. The sea areas around the island can be fairly rough at times as the wind speed may increase up to 50kmph at times..

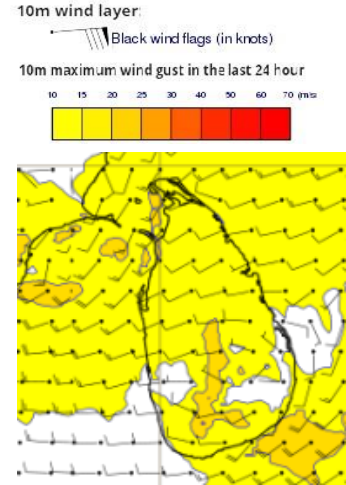
## Wind and Rainfall Forecast (Total precipitation for 24 hrs)



## Significant wave height (in meters)



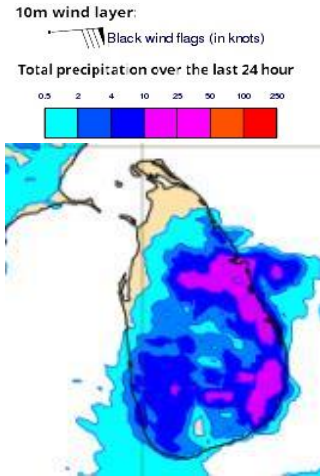
## Wind Gust (m/s)



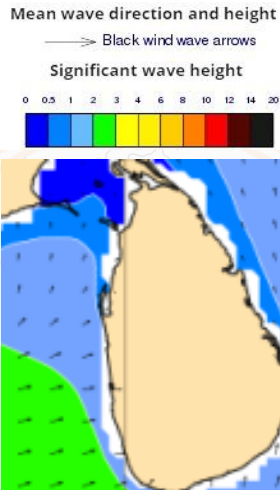
Showers or thundershowers will occur at a few places in the sea areas off the coast extending from Puttalam to Galle via Colombo. Thundershowers may occur at a few places in the other sea areas particularly during the afternoon.

Wind speed will be 25-35 kmph in the sea areas around the island. The sea areas extending from Puttalam to Trincomalee via Kankasanturai and from Hambantota to Pottuvil can be rough at times as wind speed can increase up to 50-55 kmph.

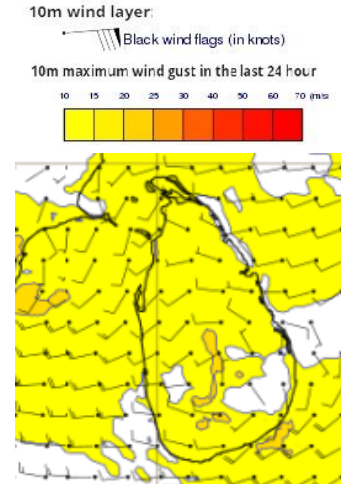
## Wind and Rainfall Forecast (Total precipitation for 24 hrs)



## Significant wave height (in meters)



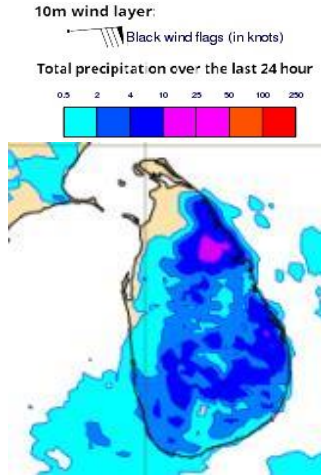
## Wind Gust (m/s)



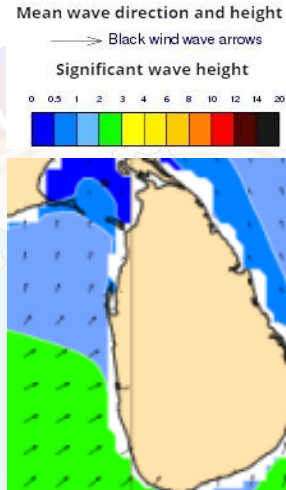
Showers or thundershowers will occur at a few places in the sea areas off the coast extending from Puttalam to Galle via Colombo. Thundershowers may occur at a few places in the other sea areas particularly during the afternoon.

Wind speed will be 25-35 kmph in the sea areas around the island. The sea areas extending from Puttalam to Trincomalee via Kankasanturai and from Hambantota to Pottuvil can be rough at times as wind speed can increase up to 50-55 kmph.

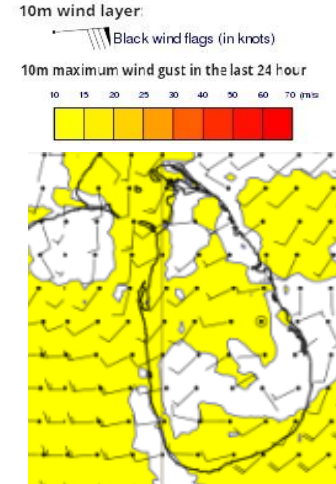
## Wind and Rainfall Forecast (Total precipitation for 24 hrs)



## Significant wave height (in meters)



## Wind Gust (m/s)

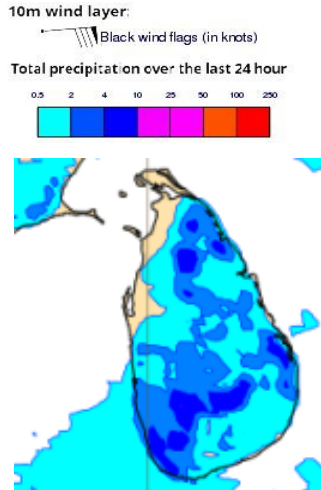


Showers or thundershowers will occur at a few places in the sea areas off the coast extending from Puttalam to Galle via Colombo.

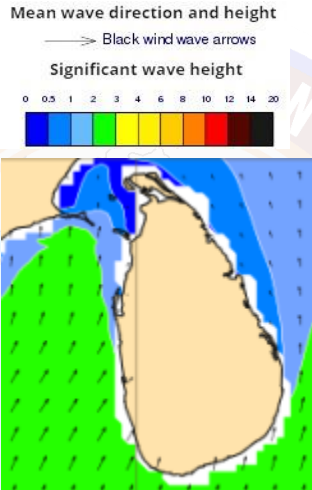
Wind speed will be 25-35 kmph in the sea areas around the island. The sea areas extending from Puttalam to Trincomalee via Kankasanturai and from Hambantota to Pottuvil can be fairly rough at times as wind speed can increase up to 40-50 kmph.



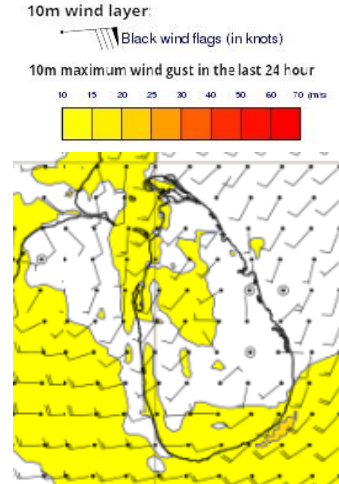
## Wind and Rainfall Forecast (Total precipitation for 24 hrs)



## Significant wave height (in meters)



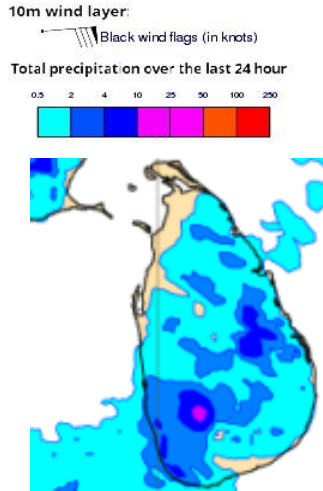
## Wind Gust (m/s)



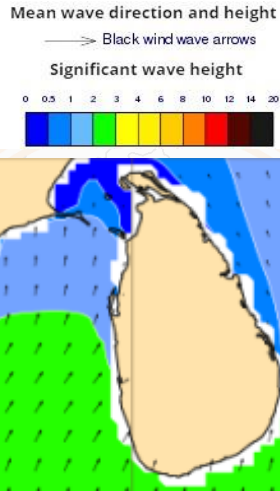
Showers or thundershowers will occur at a few places in the sea areas off the coast extending from Puttalam to Galle via Colombo.

Wind speed will be 25-35 kmph in the sea areas around the island. The sea areas extending from Hambantota to Pottuvil can be fairly rough at times as wind speed can increase up to 40-50 kmph.

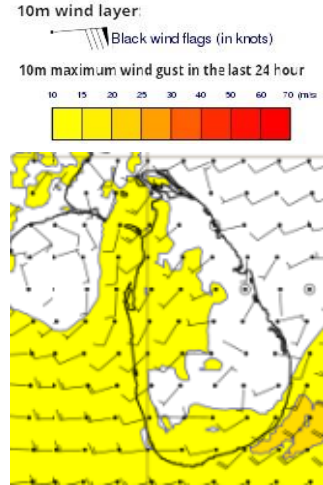
## Wind and Rainfall Forecast (Total precipitation for 24 hrs)



## Significant wave height (in meters)



## Wind Gust (m/s)



Showers or thundershowers will occur at a few places in the sea areas off the coast extending from Puttalam to Galle via Colombo.

Wind speed will be 25-35 kmph in the sea areas around the island. The sea areas extending from Colombo to Kankasanturai via Puttalam and from Hambantota to Pottuvil can be fairly rough at times as wind speed can increase up to 40-50 kmph.