



INFORMATION FUSION CENTRE COLOMBO

8 DAY FORECAST FOR COASTAL AREAS AROUND SRI LANKA

Issued at 10.00 p.m. on 30 July 2022
Marine Weather Division, National Meteorological Centre, Department of
Meteorology.



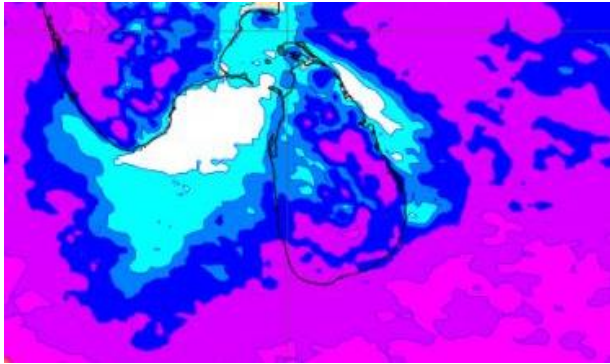
Wind and Rainfall Forecast (Total precipitation for 24 hrs)

10m wind layer:

Black wind flags (in knots)

Total precipitation over the last 24 hour

0.5 2 4 10 25 50 100 200



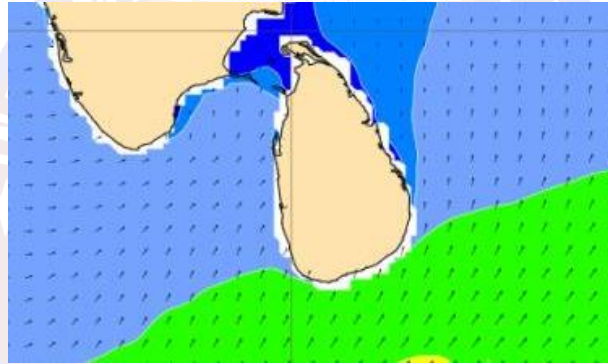
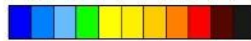
Significant wave height (in meters)

Mean wave direction and height

Black wind wave arrows

Significant wave height

0 0.5 1 2 3 4 6 8 10 12 14 20



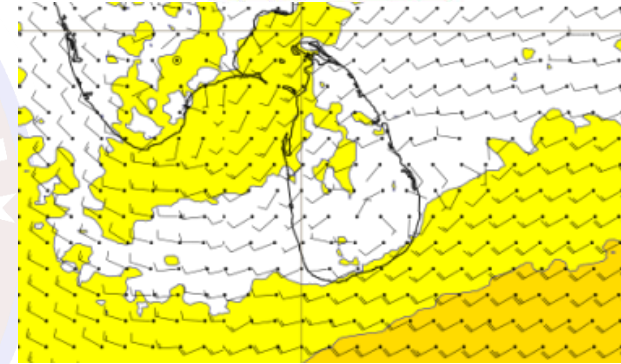
Wind Gust (m/s)

10m wind layer:

Black wind flags (in knots)

10m maximum wind gust in the last 24 hour

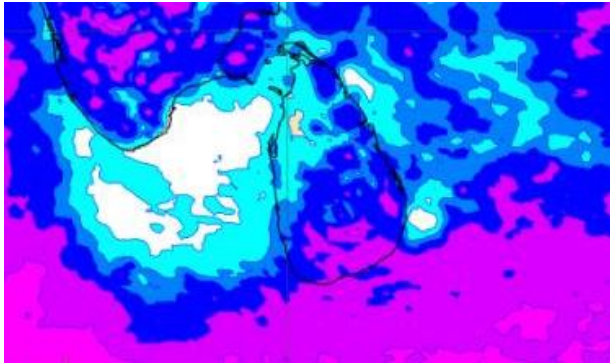
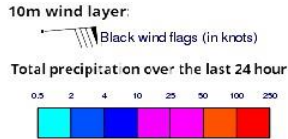
10 15 20 25 30 40 50 60 70 (km/h)



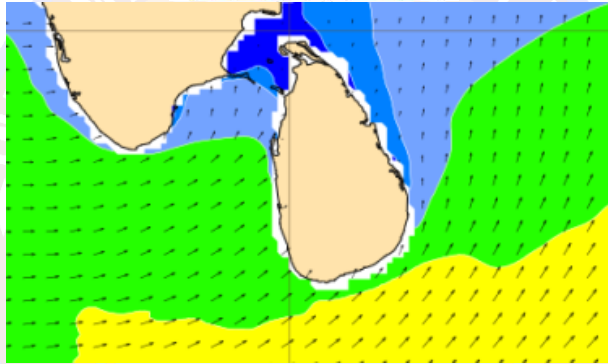
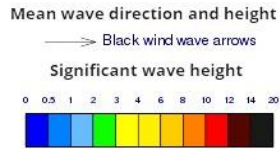
Showers or thundershowers will occur at several places in the sea areas around the Island.

Wind speed will be 30-40 kmph in the sea areas around the island. The sea area extending from Galle to Pottuvil via Hambantota can be rough at times as the wind speed may increase up to 50-60 kmph at times.

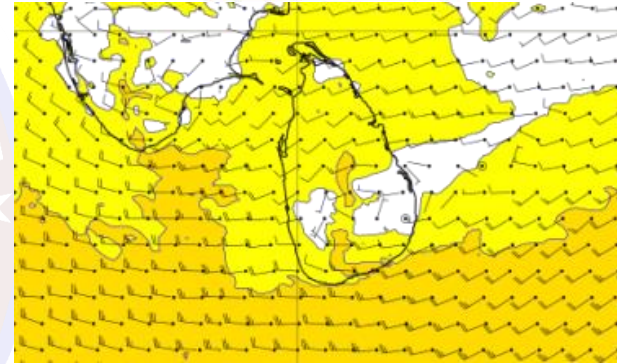
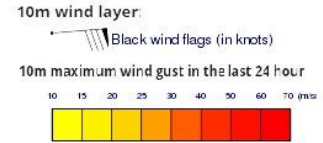
Wind and Rainfall Forecast (Total precipitation for 24 hrs)



Significant wave height (in meters)



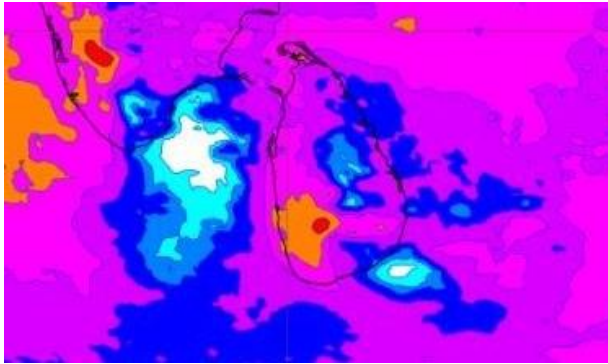
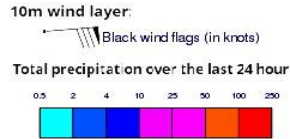
Wind Gust (m/s)



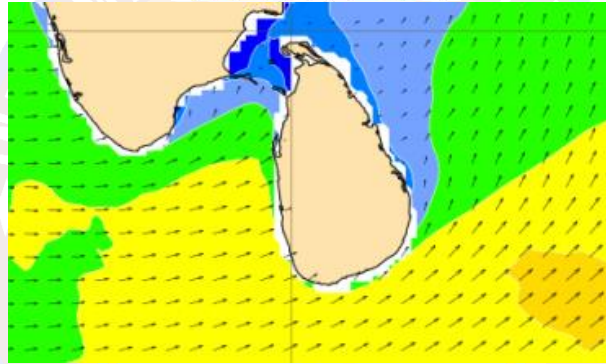
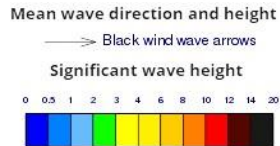
Showers or thundershowers will occur at several places in the sea areas around the Island.

Wind speed will be 30-40 kmph in the sea areas around the island. The sea area extending from Galle to Pottuvil via Hambantota can be rough at times as the wind speed may increase up to 50-60 kmph at times.

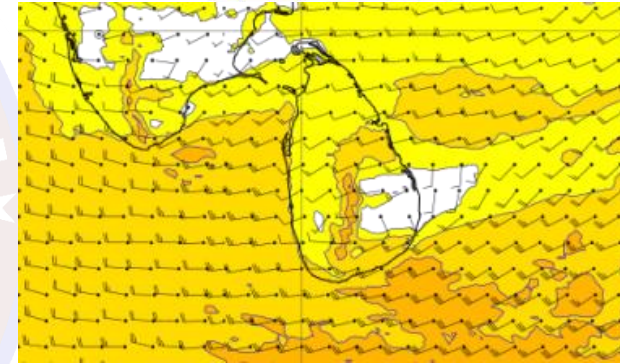
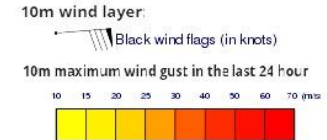
Wind and Rainfall Forecast (Total precipitation for 24 hrs)



Significant wave height (in meters)



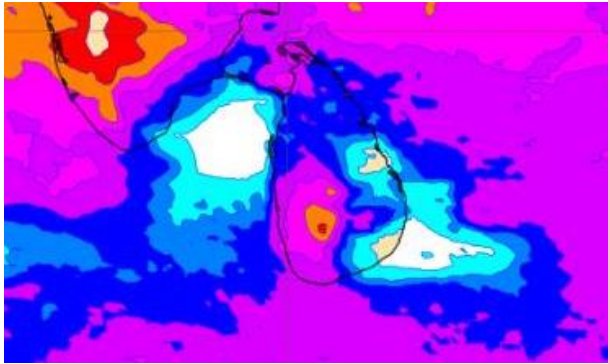
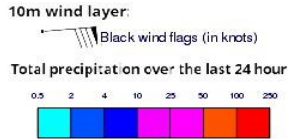
Wind Gust (m/s)



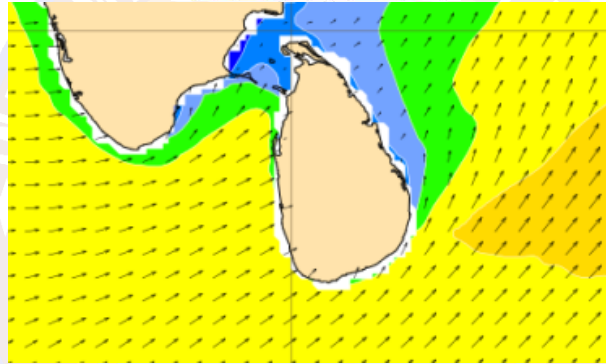
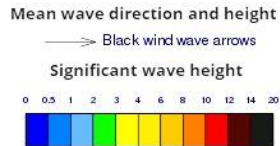
Showers or thundershowers will occur at several places in the sea areas around the Island.

Wind speed will be 30-40 kmph in the sea areas around the island. The sea area extending from Mannar to Hambantota via Colombo and Matara can be fairly rough at times as the wind speed may increase up to 50 kmph at times and the sea area extending from Hambantota to Pottuvil can be rough at times as the wind speed may increase up to 60-70 kmph at times.

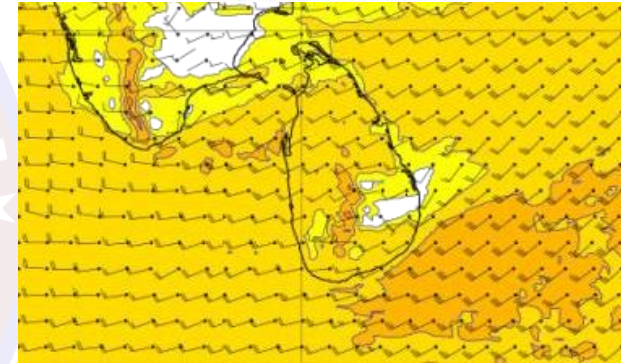
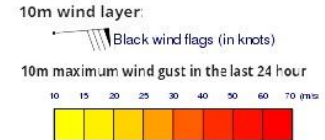
Wind and Rainfall Forecast (Total precipitation for 24 hrs)



Significant wave height (in meters)



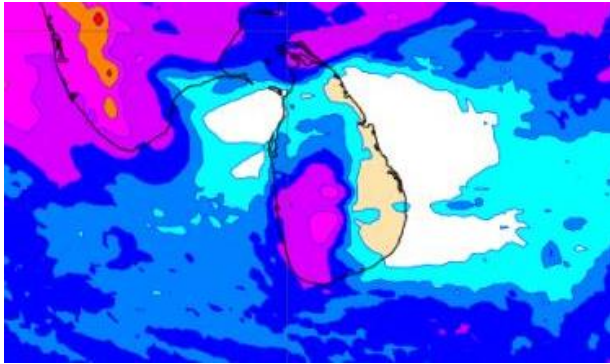
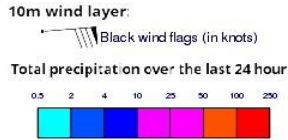
Wind Gust (m/s)



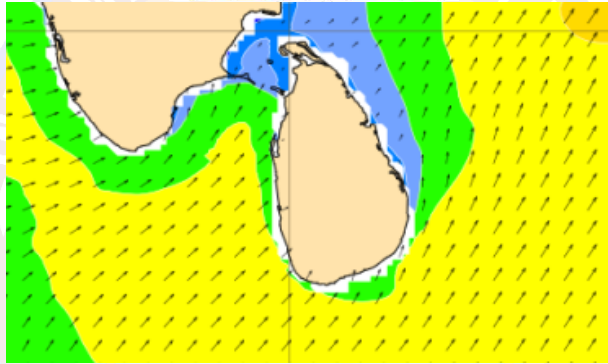
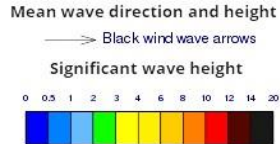
Showers or thundershowers will occur at several places in the sea areas around the Island.

Wind speed will be 30-40 kmph in the sea areas around the island. The sea area extending from Mannar to Hambantota via Colombo and Matara can be fairly rough at times as the wind speed may increase up to 50 kmph at times and the sea area extending from Hambantota to Pottuvil can be rough at times as the wind speed may increase up to 60-70 kmph at times.

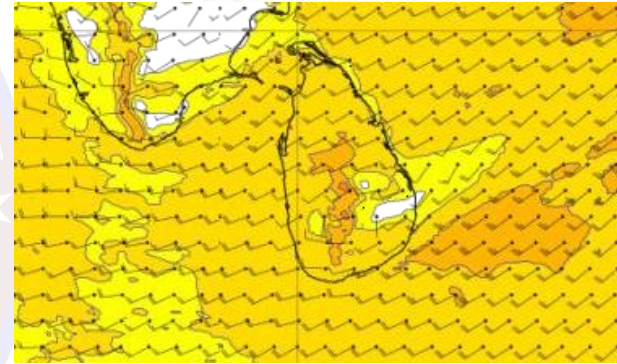
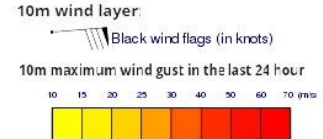
Wind and Rainfall Forecast (Total precipitation for 24 hrs)



Significant wave height (in meters)



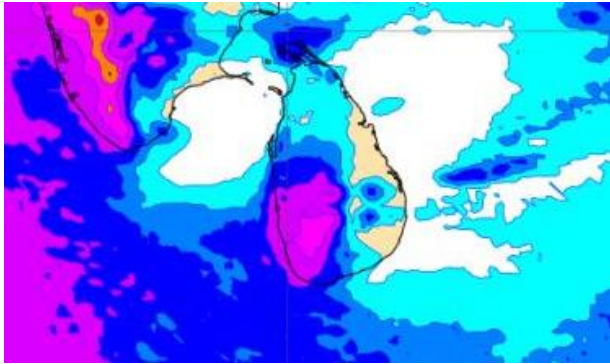
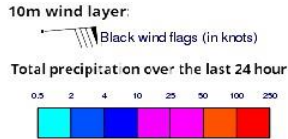
Wind Gust (m/s)



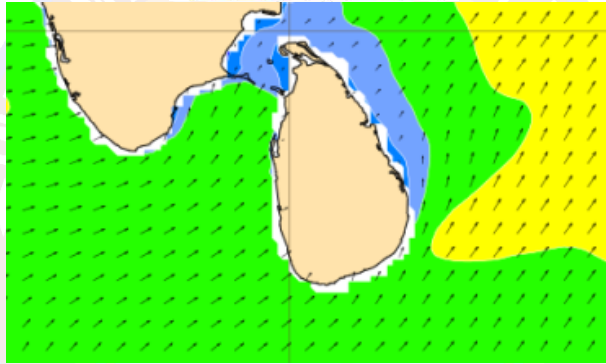
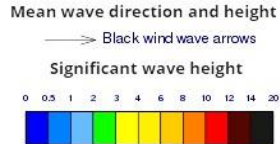
Showers or thundershowers will occur at several places in the sea areas off the coast extending from Puttalam to Galle via Colombo. Showers or thundershowers may occur at a few places in the other sea areas around the Island.

Wind speed will be 30-40 kmph in the sea areas around the island it can be fairly rough at times as the wind speed may increase up to 50 kmph at times and the sea area extending from Hambantota to Pottuvil can be rough at times as the wind speed may increase up to 60-70 kmph at times.

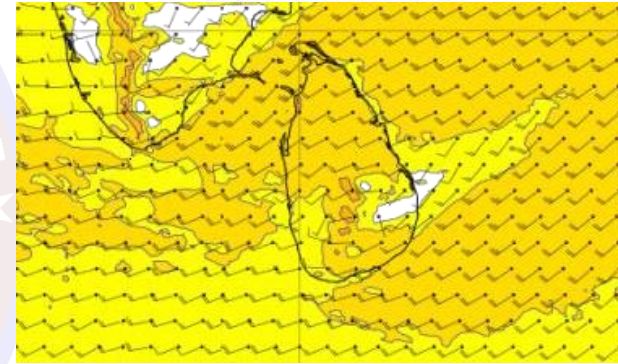
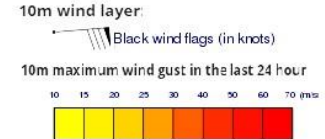
Wind and Rainfall Forecast (Total precipitation for 24 hrs)



Significant wave height (in meters)



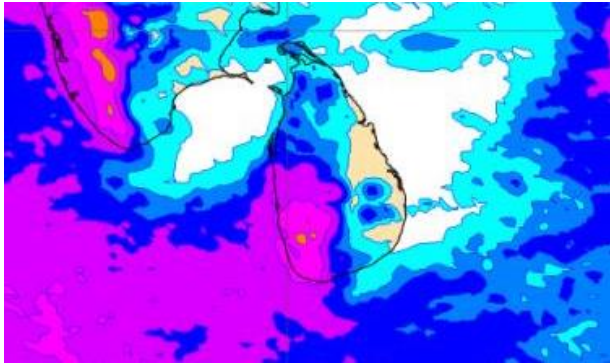
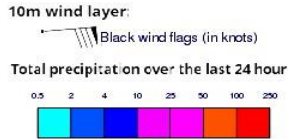
Wind Gust (m/s)



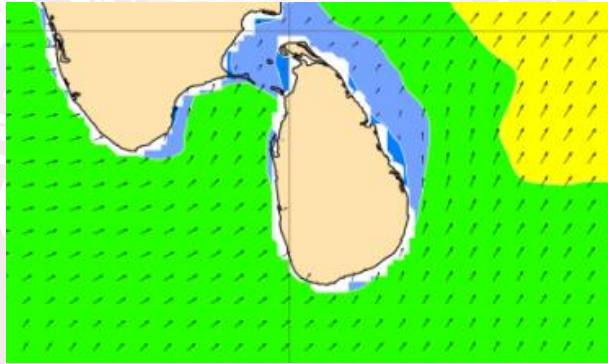
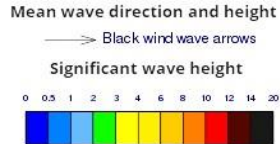
Showers or thundershowers may occur at times in the sea areas off the coast extending from Puttalam to Galle via Colombo. Showers or thundershowers may occur at a few places in the other sea areas around the Island.

Wind speed will be 30-40 kmph in the sea areas around the island. The sea area can be fairly rough at times as the wind speed may increase up to 50 kmph at times.

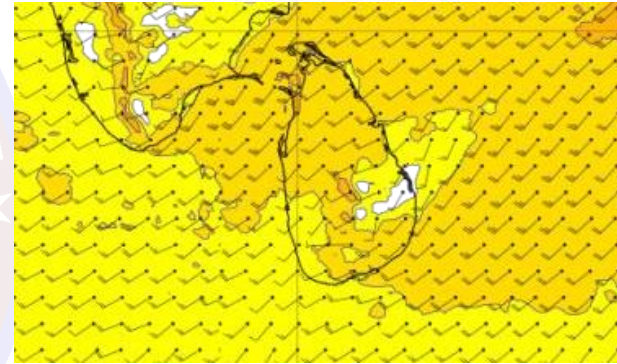
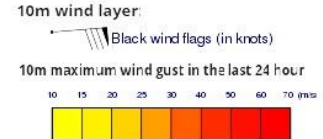
Wind and Rainfall Forecast (Total precipitation for 24 hrs)



Significant wave height (in meters)



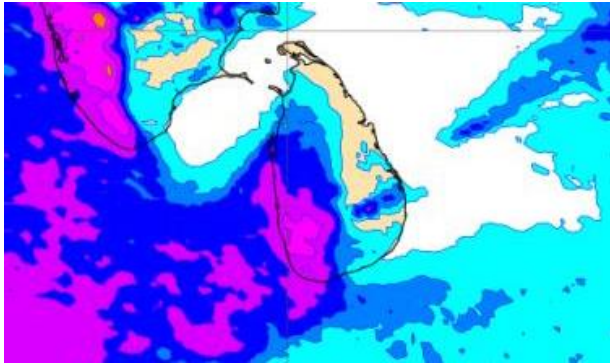
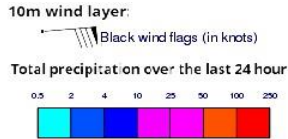
Wind Gust (m/s)



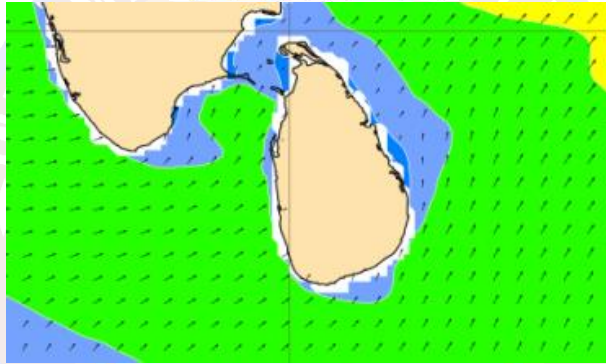
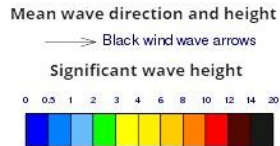
Showers or thundershowers will occur at several places in the sea areas off the coast extending from Puttalam to Galle via Colombo. Showers or thundershowers may occur at a few places in the other sea areas around the Island.

Wind speed will be 30-40 kmph in the sea areas around the island. The sea area can be fairly rough at times as the wind speed may increase up to 50 kmph at times.

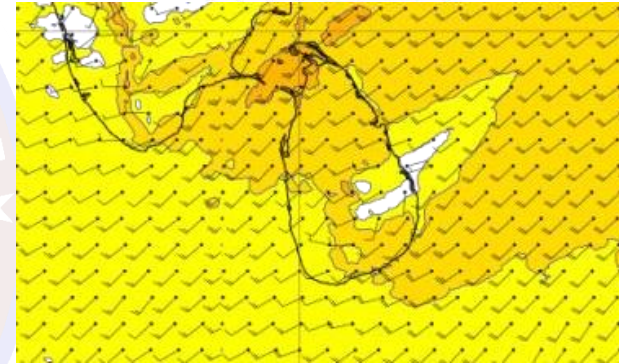
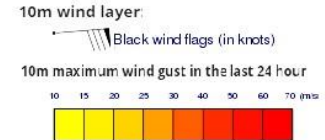
Wind and Rainfall Forecast (Total precipitation for 24 hrs)



Significant wave height (in meters)



Wind Gust (m/s)



Showers or thundershowers will occur at several places in the sea areas off the coast extending from Puttalam to Galle via Colombo.

Wind speed will be 30-40 kmph in the sea areas around the island. The sea area can be fairly rough at times as the wind speed may increase up to 50 kmph at times.