



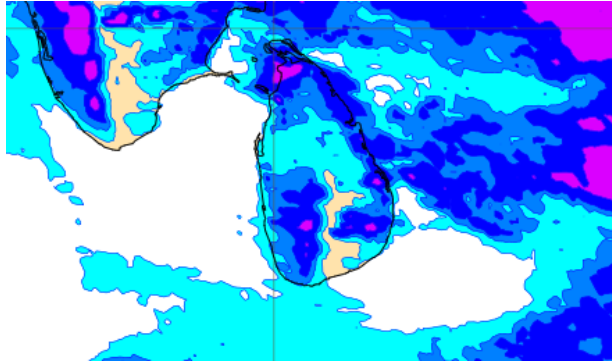
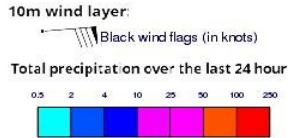
INFORMATION FUSION CENTRE COLOMBO

8 DAY FORECAST FOR COASTAL AREAS AROUND SRI LANKA

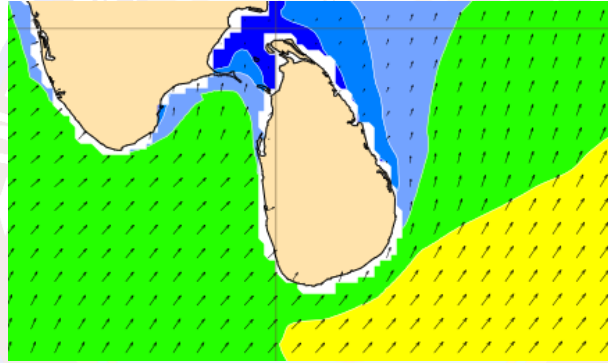
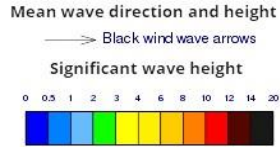
Issued at 10.00 p.m. on 22 July 2022
Marine Weather Division, National Meteorological Centre, Department of
Meteorology.



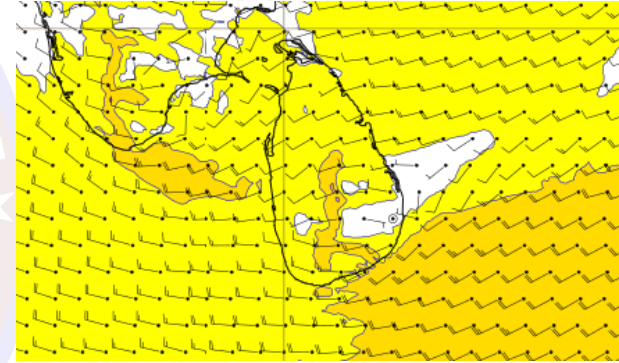
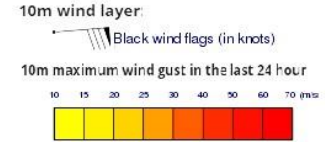
Wind and Rainfall Forecast (Total precipitation for 24 hrs)



Significant wave height (in meters)



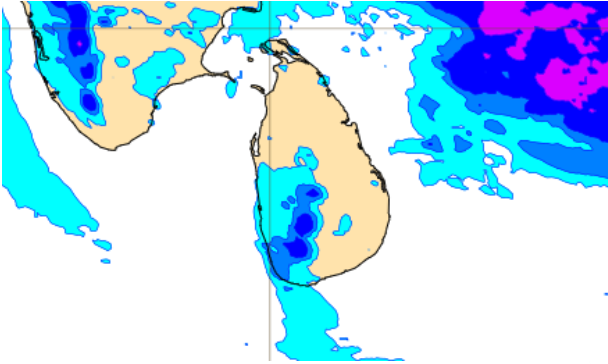
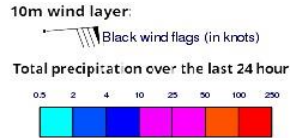
Wind Gust (m/s)



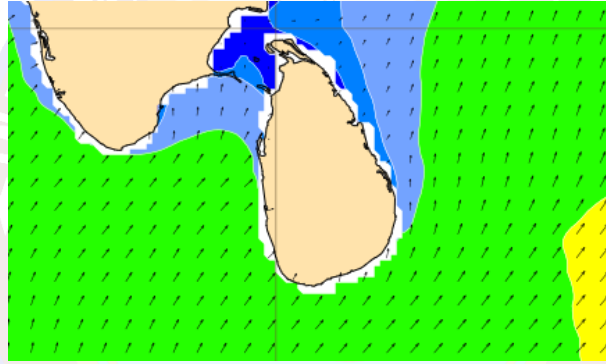
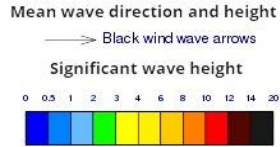
Showers may occur at a few places in the sea areas off the coast extending from Colombo to Matara via Galle. Showers or thundershowers may occur at a few places in the sea areas off the coast extending from Kankasanthuuri to Pottuvil via Trincomalee and Batticaloa during the evening.

Wind speed will be 30-40 kmph in the sea areas around the island. The sea area extending from Colombo to Pottuvil via Matara and Hambantota can be rough at times as the wind speed may increase up to 50- 55kmph at times.

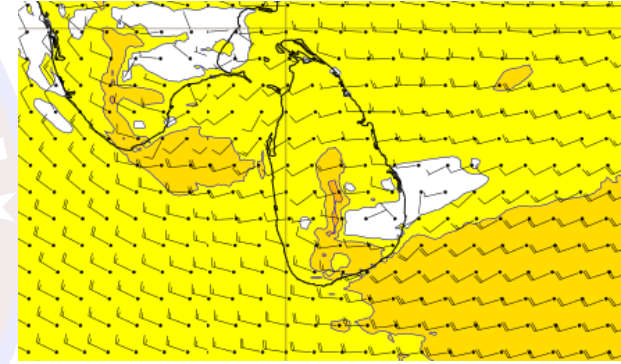
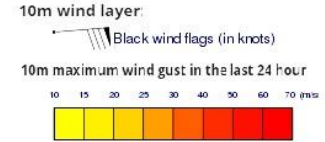
Wind and Rainfall Forecast (Total precipitation for 24 hrs)



Significant wave height (in meters)



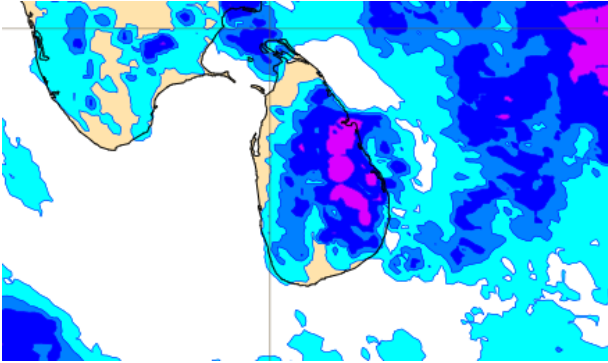
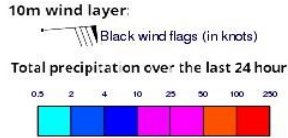
Wind Gust (m/s)



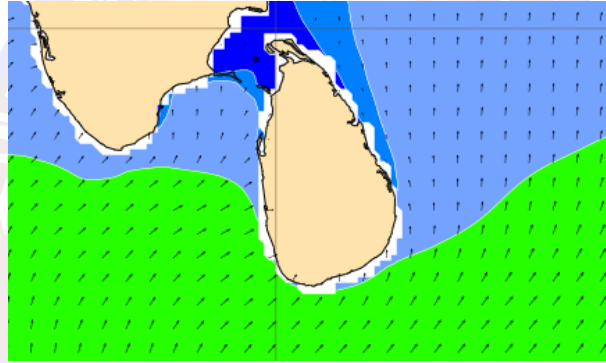
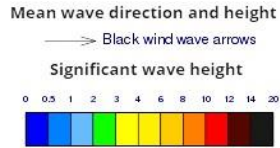
Mainly fair weather will prevail over sea areas around the island.

Wind speed will be 30-40 kmph in the sea areas around the island. The sea area extending from Puttalam to Colombo and from Hambantota to Pottuvil can be rough at times as the wind speed may increase up to 50- 55 kmph at times.

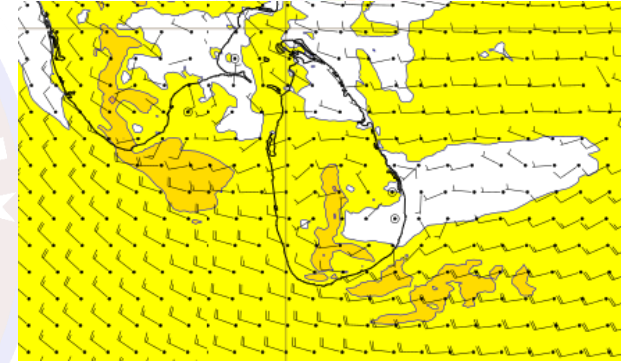
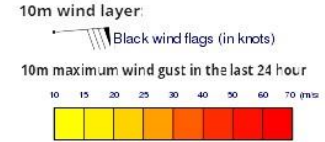
Wind and Rainfall Forecast (Total precipitation for 24 hrs)



Significant wave height (in meters)



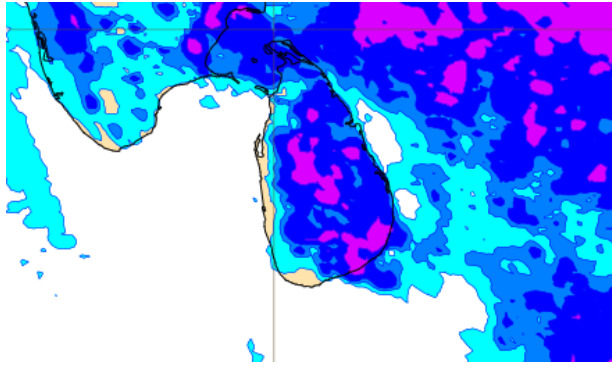
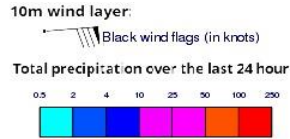
Wind Gust (m/s)



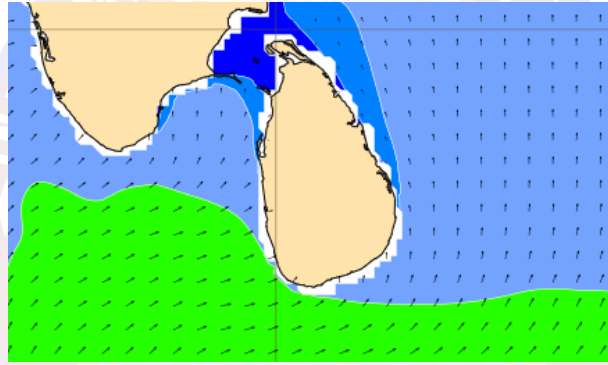
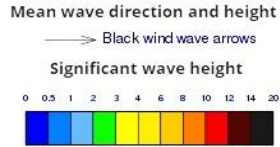
Mainly fair weather will prevail over sea areas around the island..

Wind speed will be 30-40 kmph in the sea areas around the island. The sea area extending from Puttalam to Colombo and from Hambantota to Pottuvil can be rough at times as the wind speed may increase up to 50-55 kmph at times.

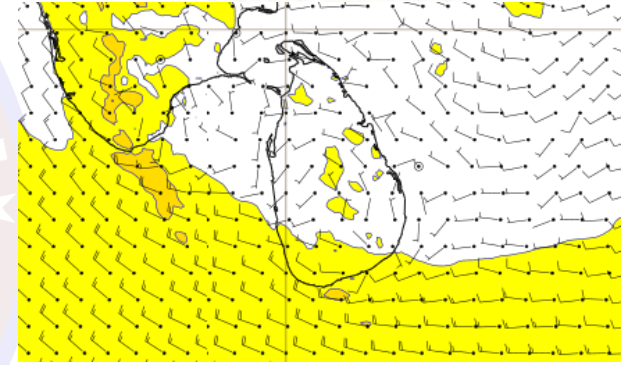
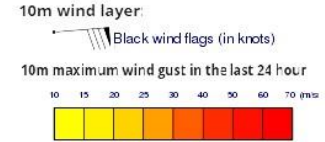
Wind and Rainfall Forecast (Total precipitation for 24 hrs)



Significant wave height (in meters)



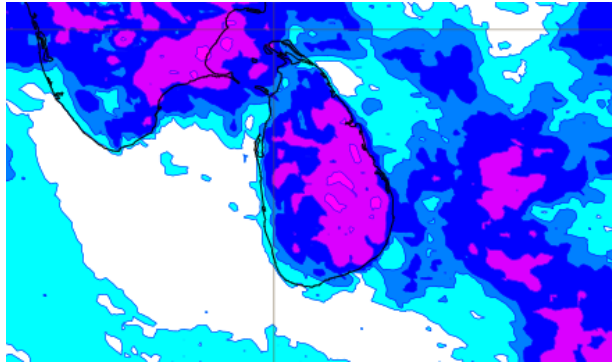
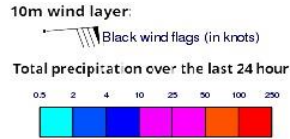
Wind Gust (m/s)



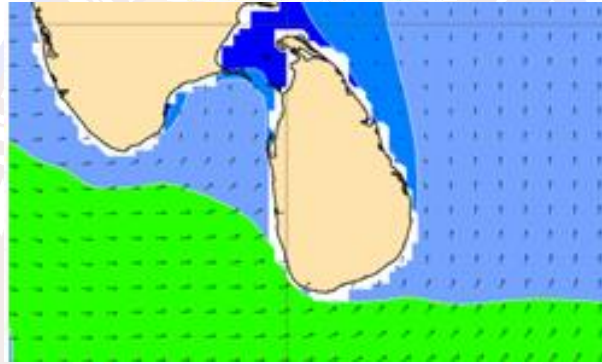
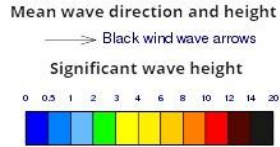
Showers or thundershowers may occur at a few places in the sea areas off the coast extending from Kankasanthuuri to Pottuvil via Trincomalee and Batticaloa during the evening.

Wind speed will be 30-40 kmph in the sea areas around the island. The sea area extending from Colombo to Pottuvil via Galle & Hambantota can be fairly rough at times as the wind speed may increase up to 50 kmph at times.

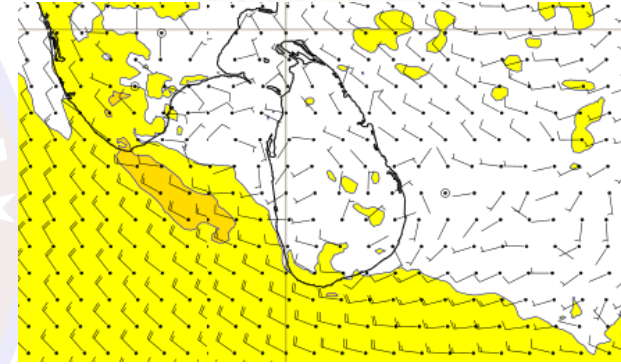
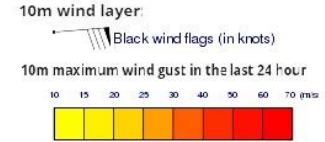
Wind and Rainfall Forecast (Total precipitation for 24 hrs)



Significant wave height (in meters)



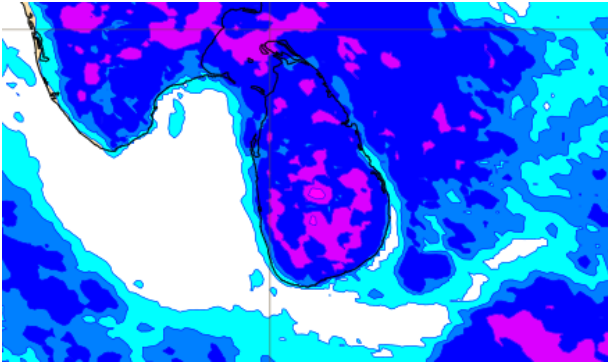
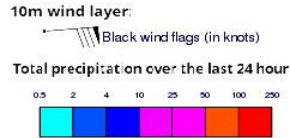
Wind Gust (m/s)



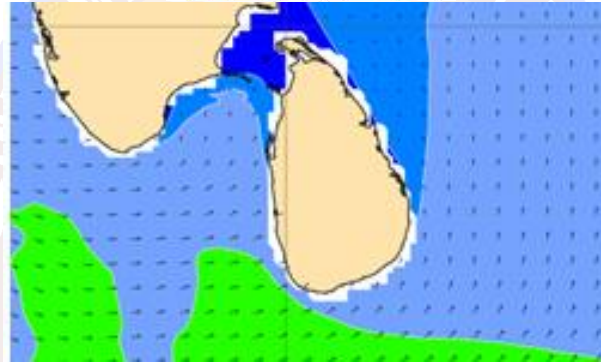
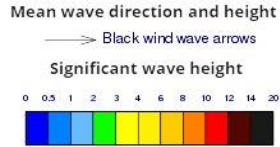
Showers or thundershowers may occur at a few places in the sea areas off the coast extending from Kankasanthuuri to Pottuvil via Trincomalee and Batticaloa during the evening.

Wind speed will be 30-40 kmph in the sea areas around the island. The sea area extending from Colombo to Hambantota via Galle can be fairly rough at times as the wind speed may increase up to 50 kmph at times.

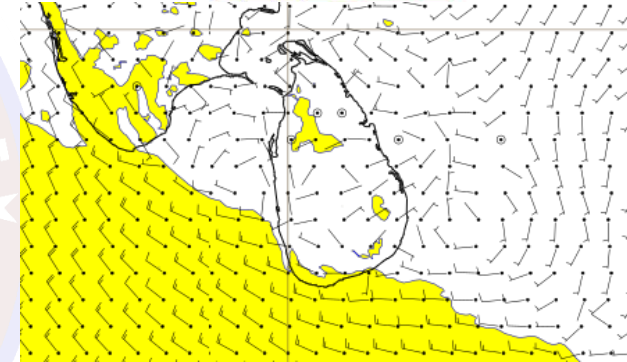
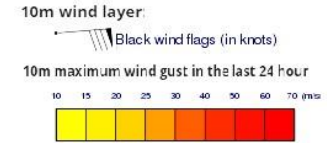
Wind and Rainfall Forecast (Total precipitation for 24 hrs)



Significant wave height (in meters)



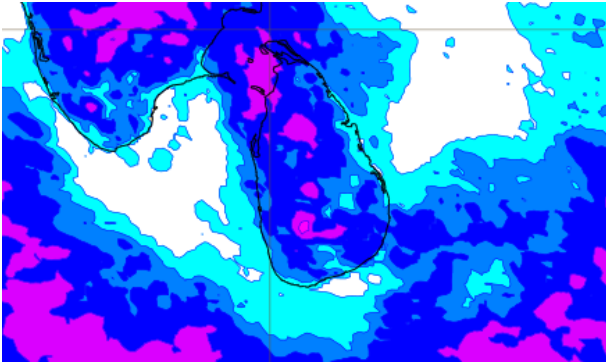
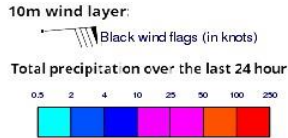
Wind Gust (m/s)



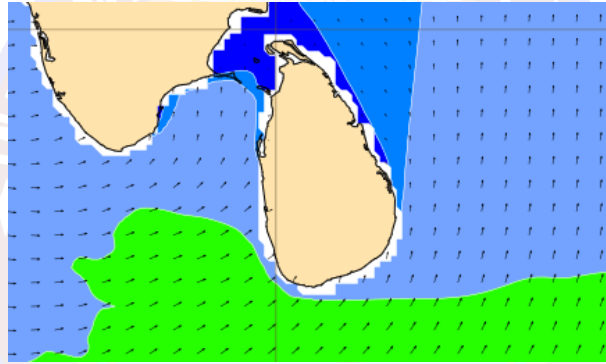
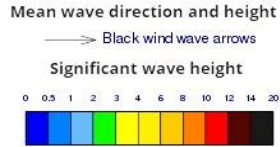
Showers or thundershowers may occur at several places in the sea areas off the coast extending from Kankasanthuuri to Pottuvil via Trincomalee and Batticaloa during the evening.

Wind speed will be 30-40 kmph in the sea areas around the island. The sea area extending from Colombo to Hambantota via Galle can be fairly rough at times as the wind speed may increase up to 50 kmph at times.

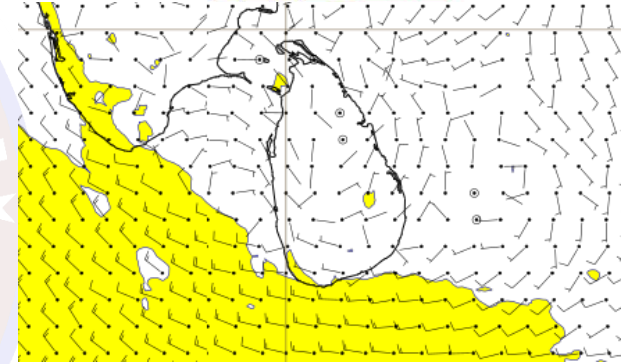
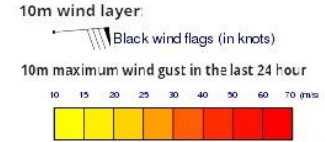
Wind and Rainfall Forecast (Total precipitation for 24 hrs)



Significant wave height (in meters)



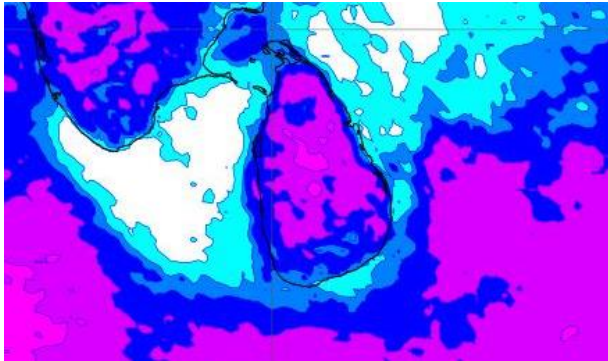
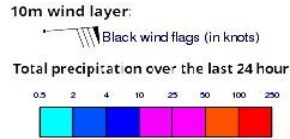
Wind Gust (m/s)



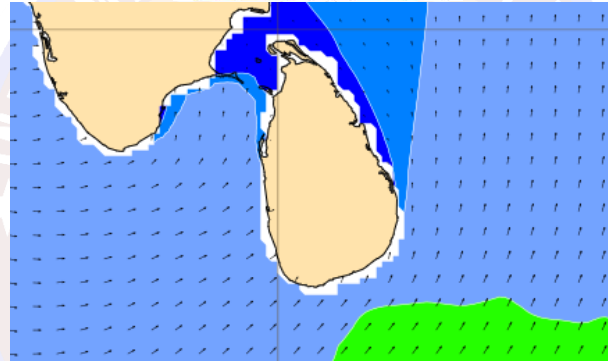
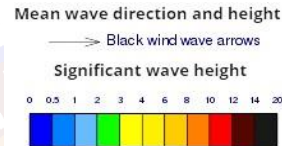
Showers or thundershowers may occur at a few places in the sea areas around the island during the evening.

Wind speed will be 30-40 kmph in the sea areas around the island. The sea area extending from Galle to Hambantota can be fairly rough at times as the wind speed may increase up to 50 kmph at times.

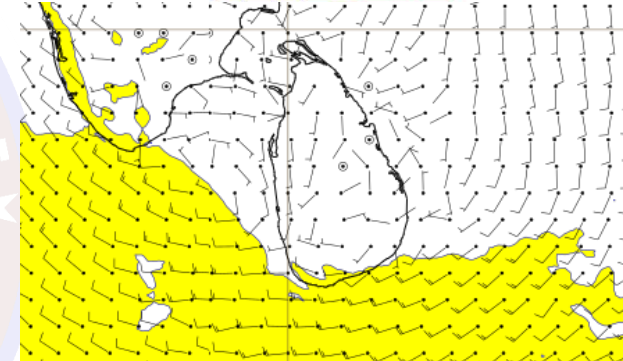
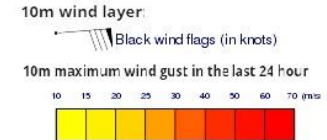
Wind and Rainfall Forecast (Total precipitation for 24 hrs)



Significant wave height (in meters)



Wind Gust (m/s)



Showers or thundershowers may occur at a few places in the sea areas around the island during the evening.

Wind speed will be 30-40 kmph in the sea areas around the island. The sea area extending from Galle to Hambantota can be fairly rough at times as the wind speed may increase up to 50 kmph at times.