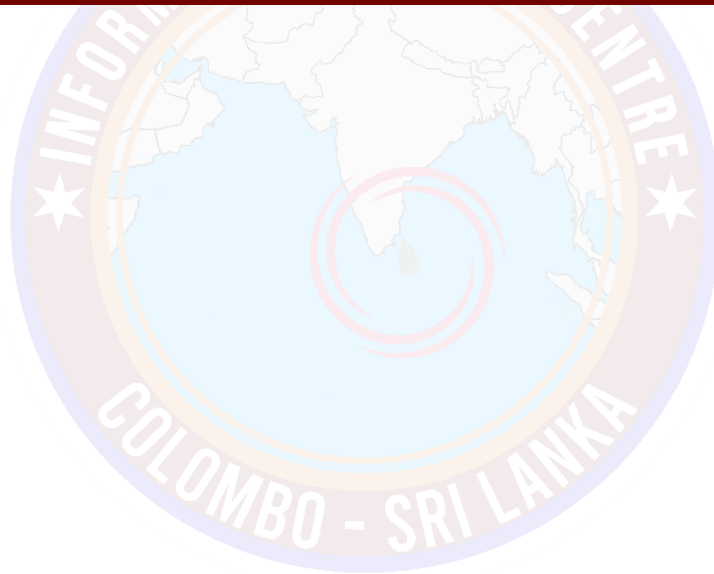


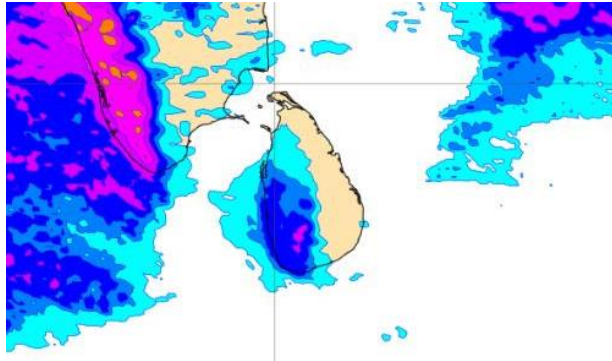
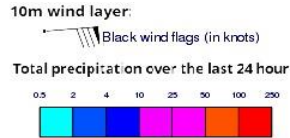
# **INFORMATION FUSION CENTRE COLOMBO**

**8 DAY FORECAST FOR COASTAL AREAS AROUND SRI LANKA**

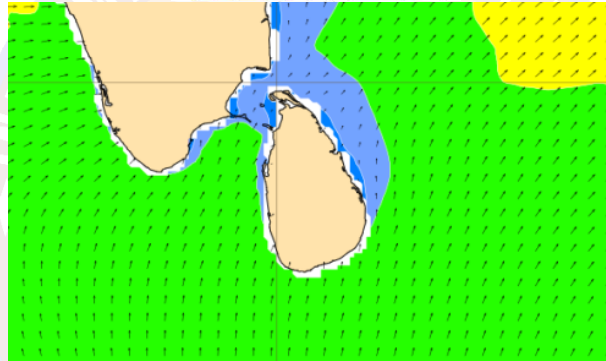
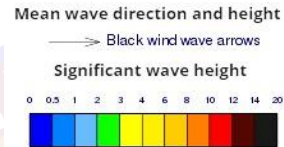
Issued at 10.00 p.m. on 14 July 2022  
Marine Weather Division, National Meteorological Centre, Department of  
Meteorology.



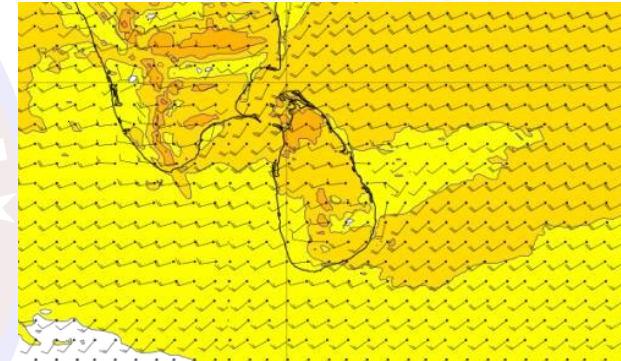
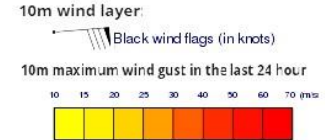
### Wind and Rainfall Forecast (Total precipitation for 24 hrs)



### Significant wave height (in meters)



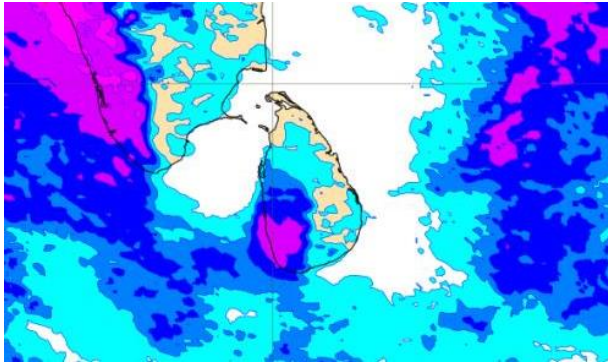
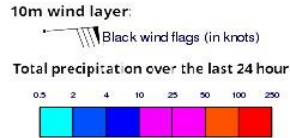
### Wind Gust (m/s)



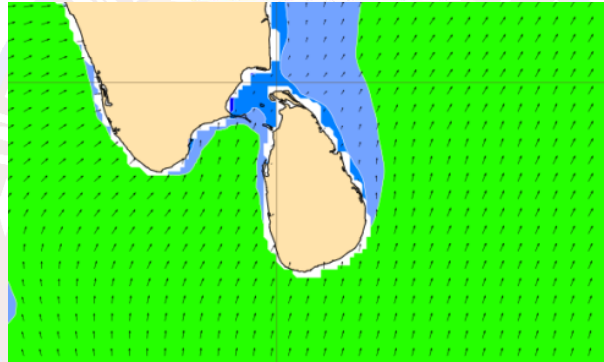
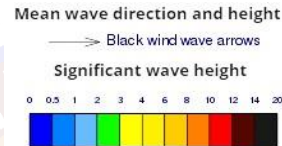
Showers may occur at a few places in the sea areas off the coast extending from Puttalam to Matara via Colombo and Galle.

Wind speed will be 30-40 kmph in the sea areas around the island. The sea area extending from Puttalam to Trincomalee via Kankasanturai and Mannar and sea area extending from Matara to Pottuvil via Hambantota can be rough at times as the wind speed may increase up to 50-60 kmph at times..

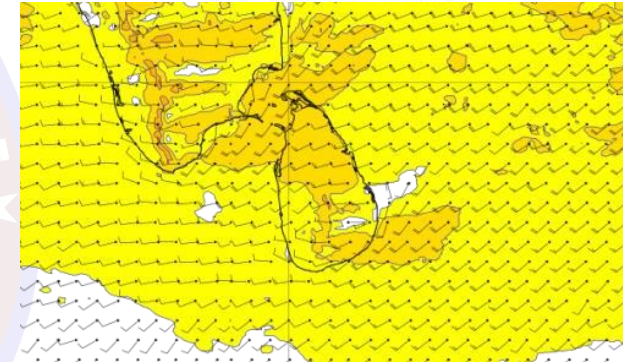
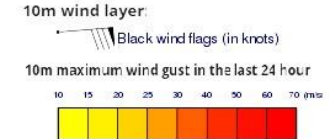
## Wind and Rainfall Forecast (Total precipitation for 24 hrs)



## Significant wave height (in meters)



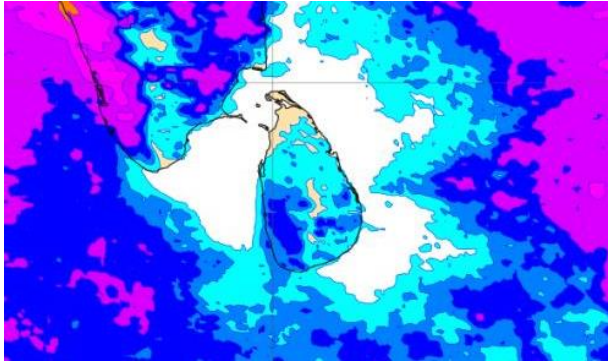
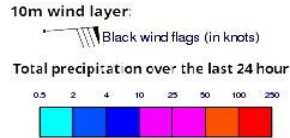
## Wind Gust (m/s)



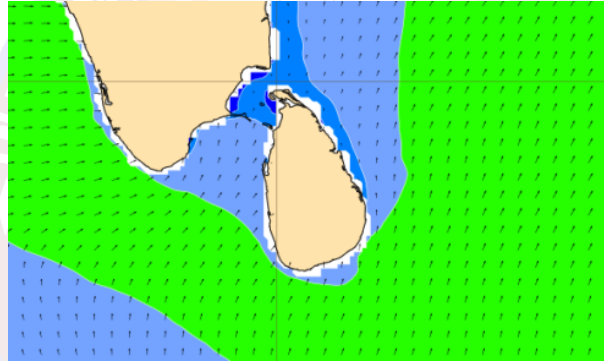
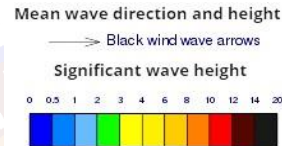
Showers may occur at a few places in the sea areas off the coast extending from Colombo to Matara via Galle.

Wind speed will be 30-40 kmph in the sea areas around the island. The sea area extending from Kankasanturai to Puttalam via Mannar and sea area extending from Matara to Pottuvil via Hambantota can be rough at times as the wind speed may increase up to 50-55 kmph at times.

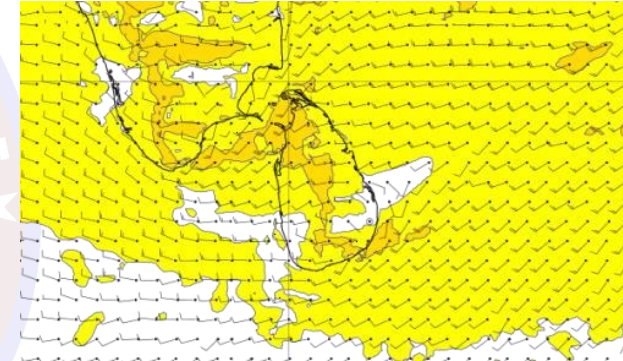
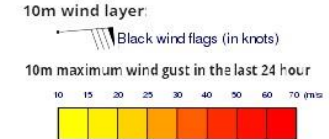
## Wind and Rainfall Forecast (Total precipitation for 24 hrs)



## Significant wave height (in meters)



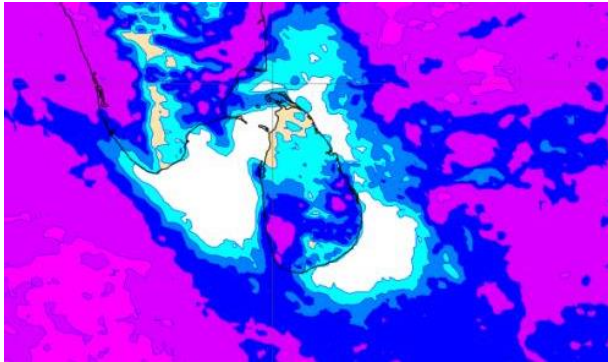
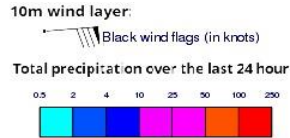
## Wind Gust (m/s)



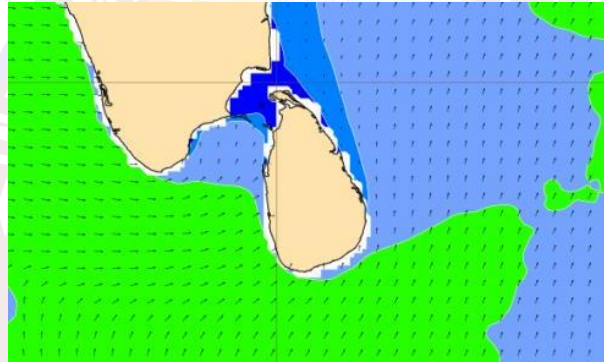
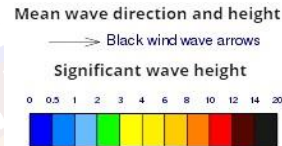
Showers may occur at a few places in the sea areas off the coast extending from Colombo to Matara via Galle.

Wind speed will be 25-35 kmph in the sea areas around the island. The sea area extending from Kankasanturai to Puttalam via Mannar and the sea area extending from Hambantota to Pottuvil can be fairly rough at times as the wind speed may increase up to 45-50 kmph at times.

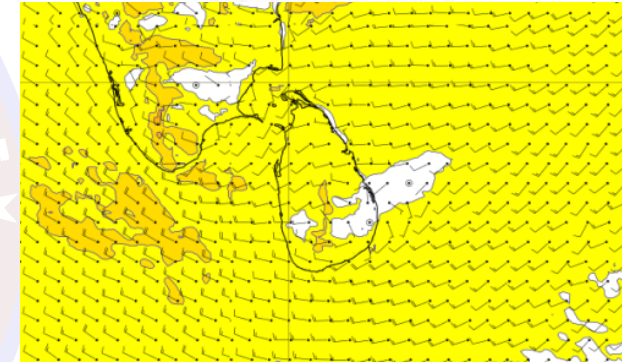
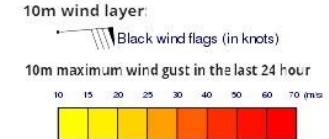
## Wind and Rainfall Forecast (Total precipitation for 24 hrs)



## Significant wave height (in meters)



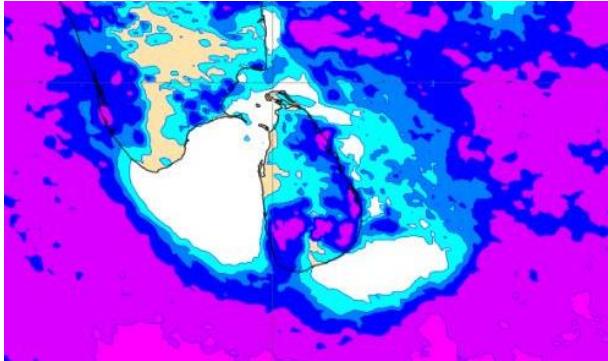
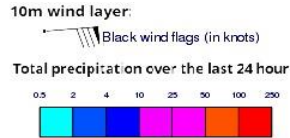
## Wind Gust (m/s)



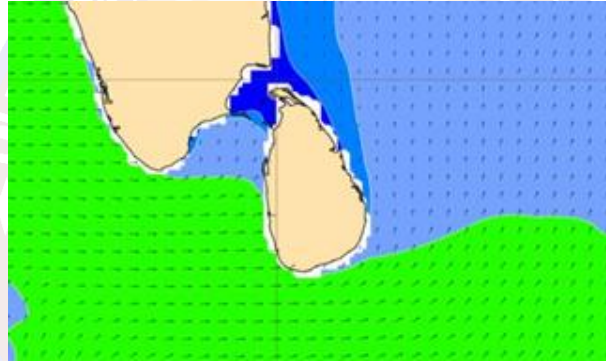
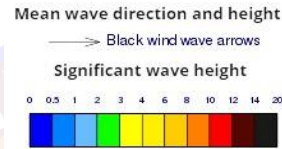
Showers will occur at a few places in the sea areas off the coast extending from Colombo to Matara via Galle. Showers or thundershowers may occur at a few places in the other sea areas in the evening or night.

Wind speed will be 25-35 kmph in the sea areas around the island. The sea area extending from Hambantota to Pottuvil can be fairly rough at times as the wind speed may increase up to 45 kmph at times.

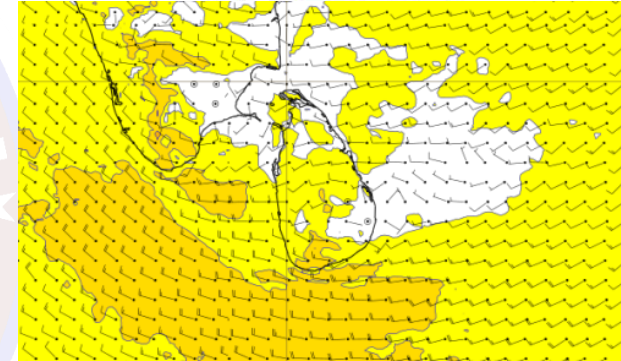
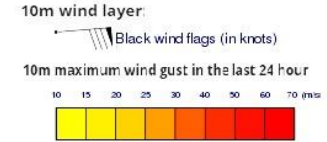
### Wind and Rainfall Forecast (Total precipitation for 24 hrs)



### Significant wave height (in meters)



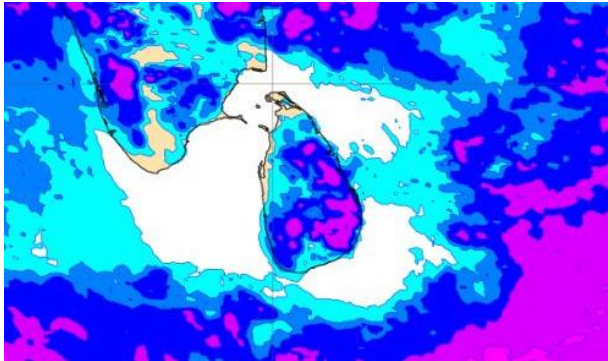
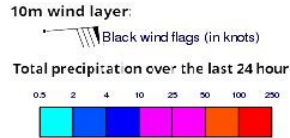
### Wind Gust (m/s)



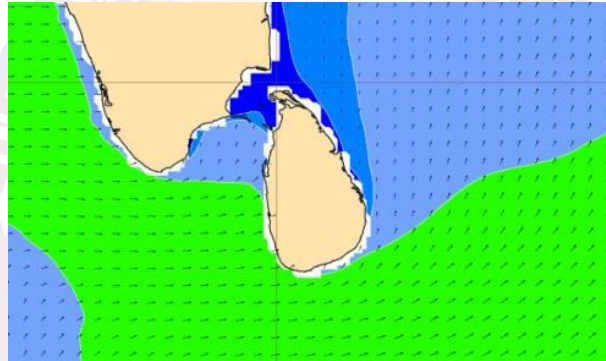
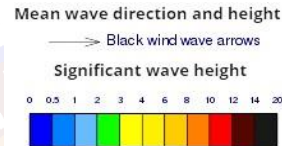
Showers will occur at a few places in the sea areas off the coast extending from Colombo to Matara via Galle. Showers or thundershowers may occur at several places in the other sea areas in the evening or night.

Wind speed will be 25-35 kmph in the sea areas around the island. The sea area extending from Galle to Pottuvil via Hambantota can be fairly rough at times as the wind speed may increase up to 45 kmph at times.

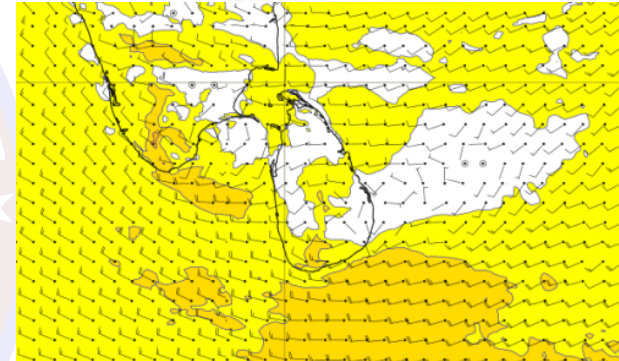
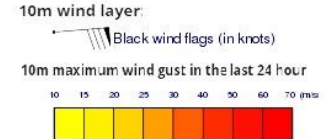
### Wind and Rainfall Forecast (Total precipitation for 24 hrs)



### Significant wave height (in meters)



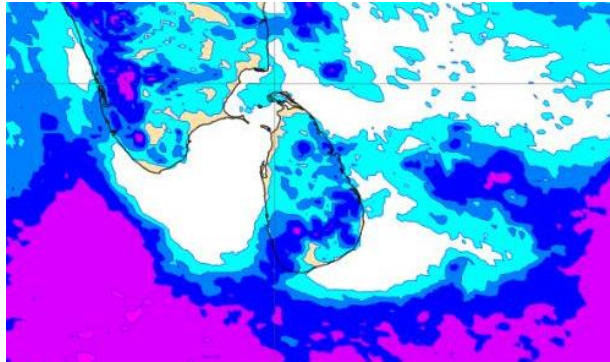
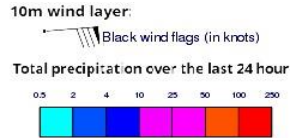
### Wind Gust (m/s)



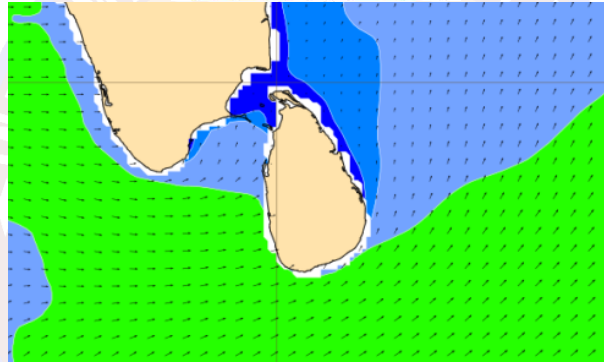
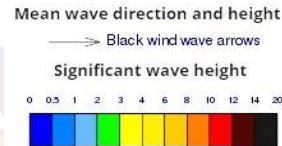
Showers will occur at a few places in the sea areas off the coast extending from Colombo to Matara via Galle. Showers or thundershowers may occur at a few places in the other sea areas in the evening or night.

Wind speed will be 25-35 kmph in the sea areas around the island. The sea area extending from Galle to Pottuvil via Hambantota can be fairly rough at times as the wind speed may increase up to 45 kmph at times.

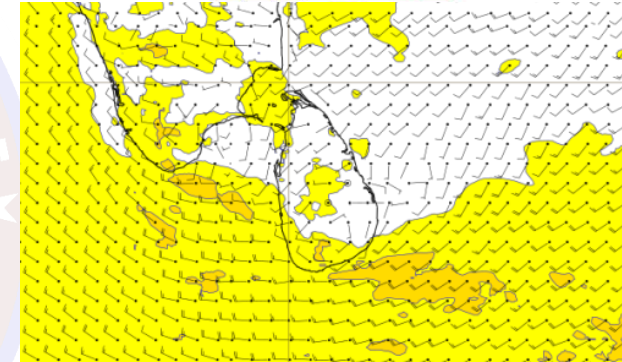
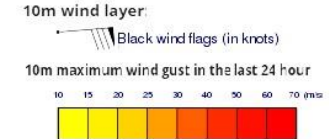
## Wind and Rainfall Forecast (Total precipitation for 24 hrs)



## Significant wave height (in meters)



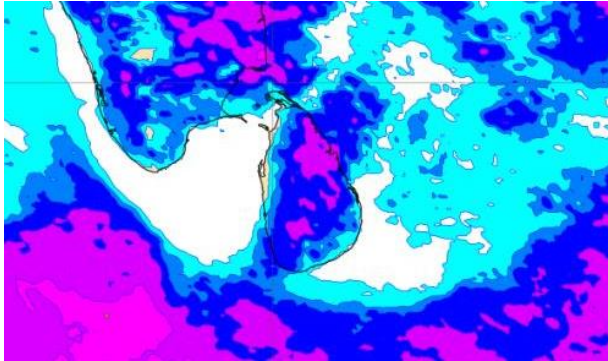
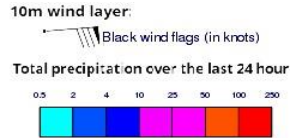
## Wind Gust (m/s)



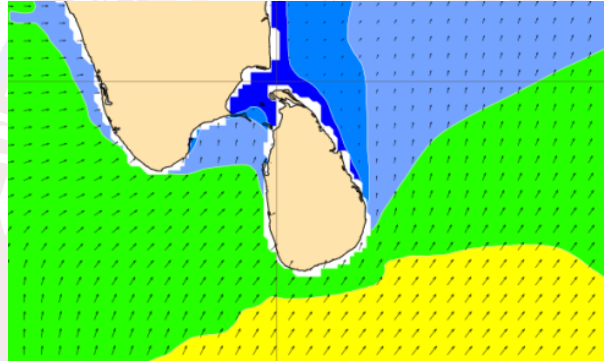
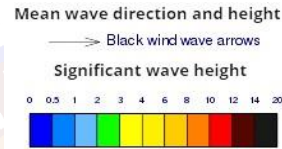
Showers will occur at a few places in the sea areas off the coast extending from Colombo to Matara via Galle. Showers or thundershowers may occur at a few places in the other sea areas in the evening or night.

Wind speed will be 25-35 kmph in the sea areas around the island. The sea area extending from Galle to Pottuvil via Hambantota can be fairly rough at times as the wind speed may increase up to 45 kmph at times.

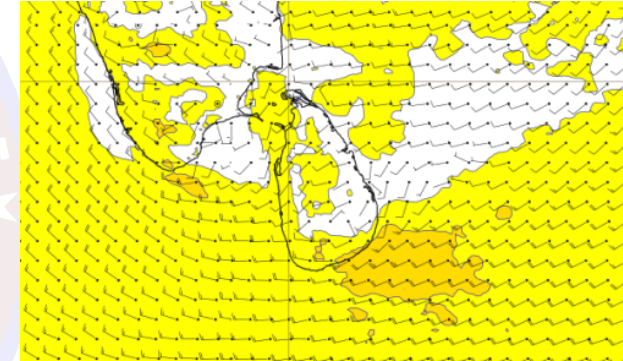
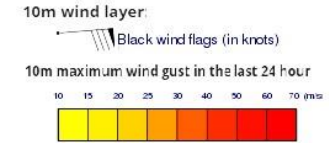
### Wind and Rainfall Forecast (Total precipitation for 24 hrs)



### Significant wave height (in meters)



### Wind Gust (m/s)



Showers will occur at a few places in the sea areas off the coast extending from Colombo to Matara via Galle. Showers or thundershowers may occur at a few places in the other sea areas in the evening or night.

Wind speed will be 25-35 kmph in the sea areas around the island. The sea area extending from Hambantota to Pottuvil can be fairly rough at times as the wind speed may increase up to 45 kmph at times.