



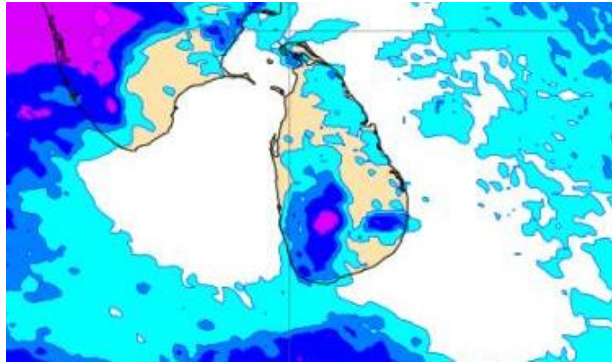
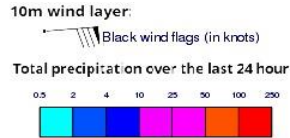
# **INFORMATION FUSION CENTRE COLOMBO**

**8 DAY FORECAST FOR COASTAL AREAS AROUND SRI LANKA**

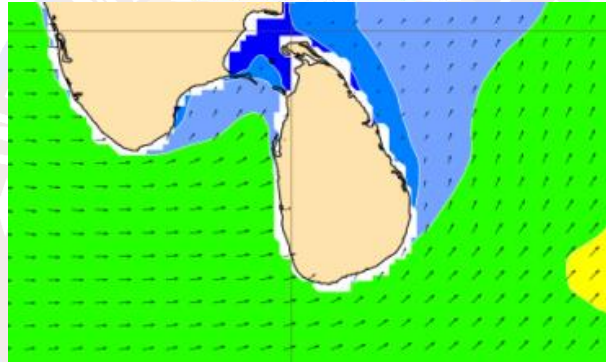
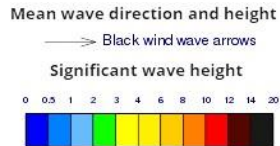
Issued at 10.00 p.m. on 04 July 2022  
Marine Weather Division, National Meteorological Centre, Department of  
Meteorology.



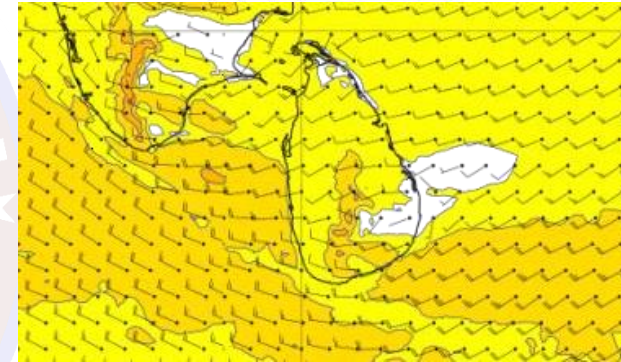
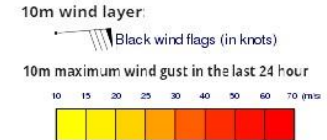
## Wind and Rainfall Forecast (Total precipitation for 24 hrs)



## Significant wave height (in meters)



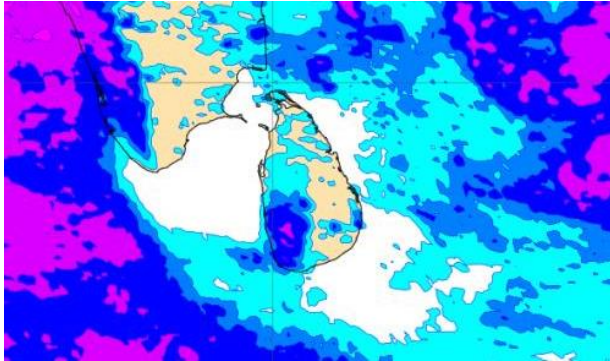
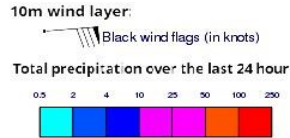
## Wind Gust (m/s)



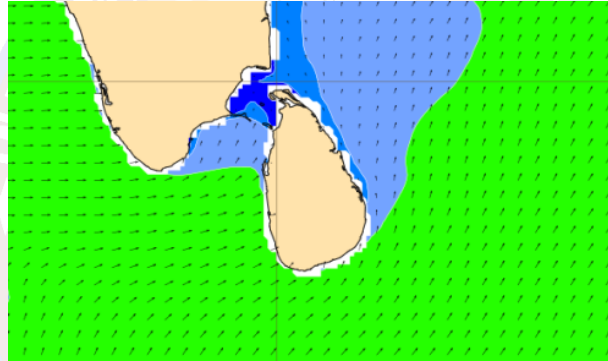
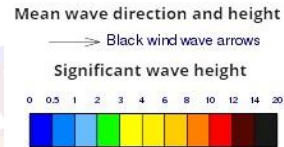
Showers or thunder showers will occur at several places in the sea areas off the coast extending from Colombo to Matara via Galle.

Wind speed will be 30-40 kmph in the sea areas around the island. The sea area extending from Puttalam to Pottuvil via Colombo, Galle and Hambantota can be rough at times as the wind speed may increase up to 55-65 kmph at times.

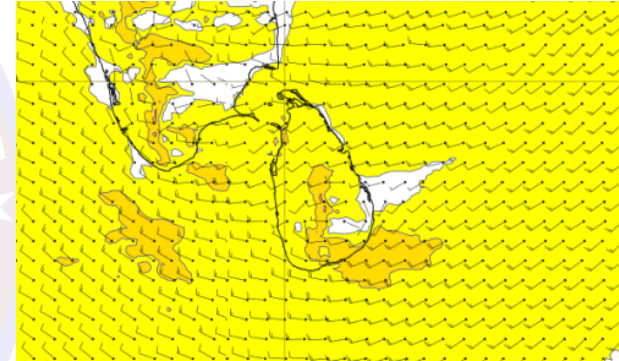
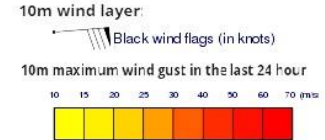
## Wind and Rainfall Forecast (Total precipitation for 24 hrs)



## Significant wave height (in meters)



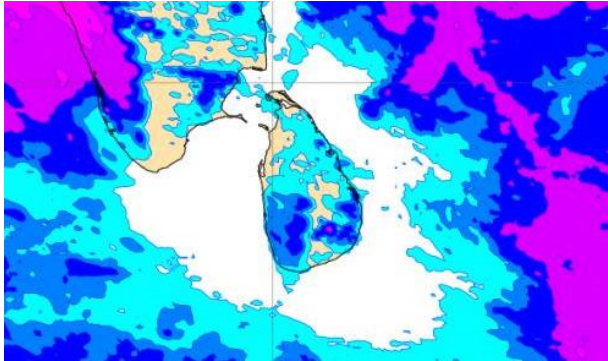
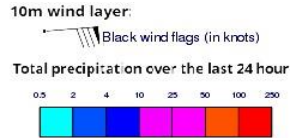
## Wind Gust (m/s)



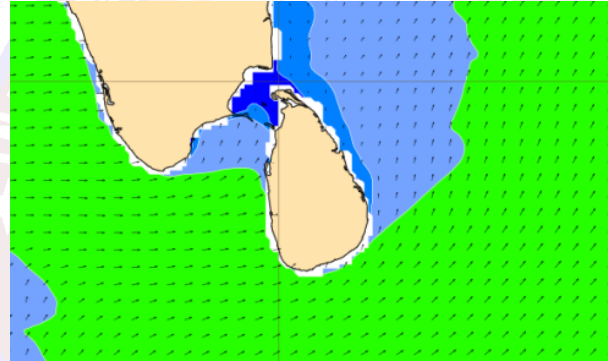
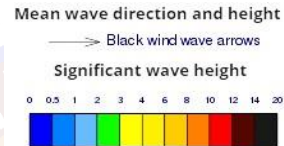
Showers or thunder showers will occur at several places in the sea areas off the coast extending from Colombo to Matara via Galle. Showers or thundershowers may occur at a few places in the other sea areas particularly during the afternoon.

Wind speed will be 30-40 kmph in the sea areas around the island. The sea area extending from Puttalam Pottuvil via Colombo, Galle and Hambantota can be rough at times as the wind speed may increase up to 50-60 kmph at times.

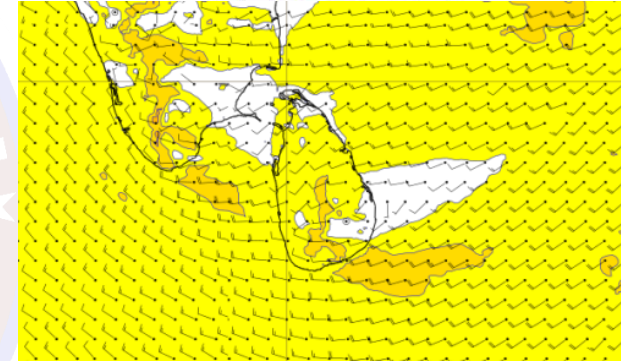
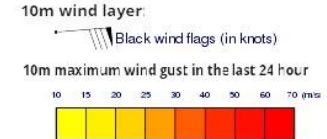
## Wind and Rainfall Forecast (Total precipitation for 24 hrs)



## Significant wave height (in meters)



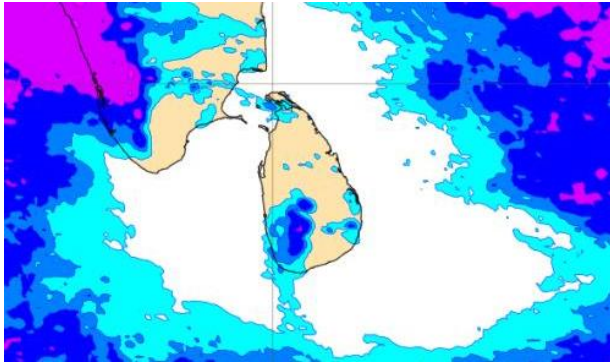
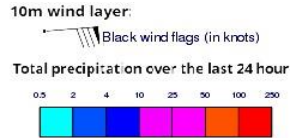
## Wind Gust (m/s)



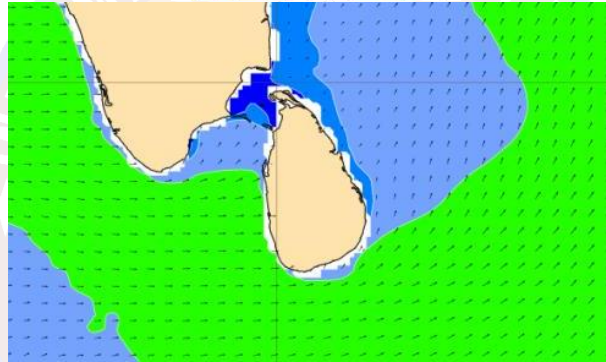
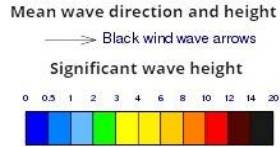
Showers or thunder showers will occur at several places in the sea areas off the coast extending from Puttalam to Pottuvil via Colombo, Galle and Hambantota particularly during the afternoon.

Wind speed will be 30-40 kmph in the sea areas around the island. The sea area extending from Puttalam to Pottuvil via Colombo, Galle and Hambantota can be rough at times as the wind speed may increase up to 50-60 kmph at times.

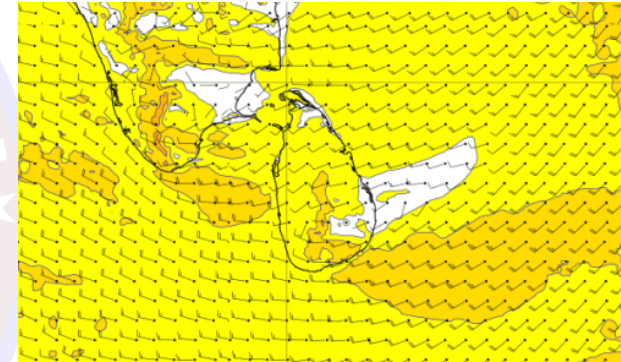
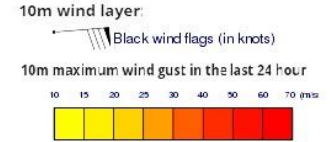
## Wind and Rainfall Forecast (Total precipitation for 24 hrs)



## Significant wave height (in meters)



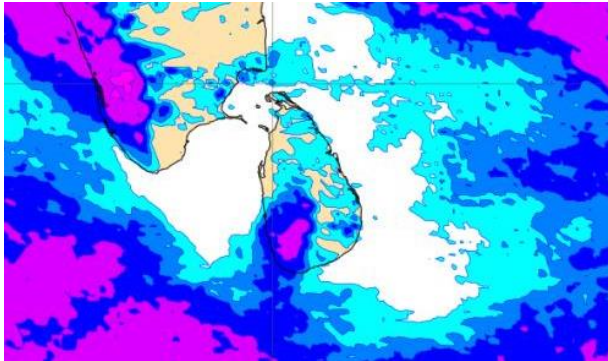
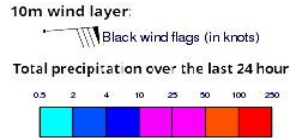
## Wind Gust (m/s)



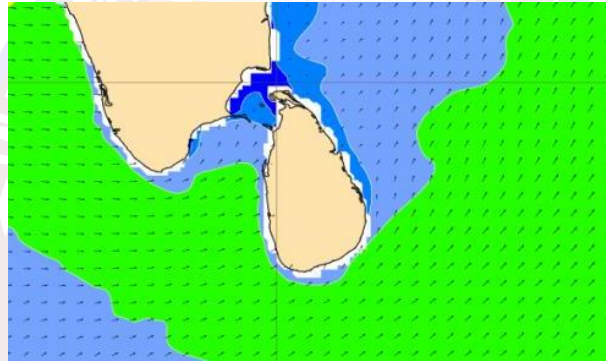
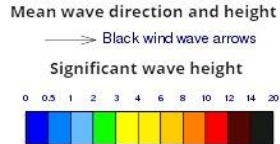
Showers may occur at a few places in the sea areas off the coast extending from Colombo to Matara via Galle.

Wind speed will be 30-40 kmph in the sea areas around the island. The sea area extending from Puttalam to Pottuvil via Colombo, Galle and Hambantota can be rough at times as the wind speed may increase up to 50-60 kmph at times.

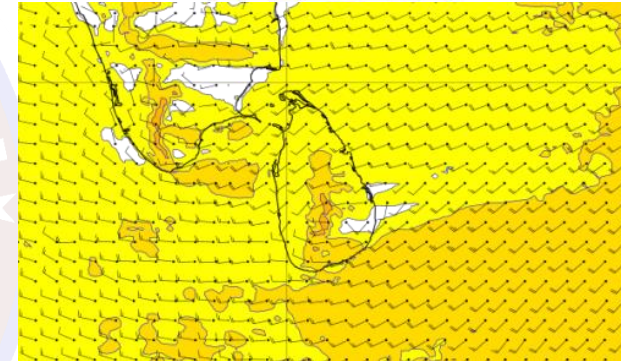
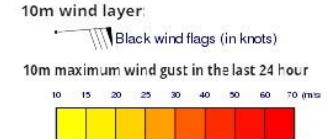
## Wind and Rainfall Forecast (Total precipitation for 24 hrs)



## Significant wave height (in meters)



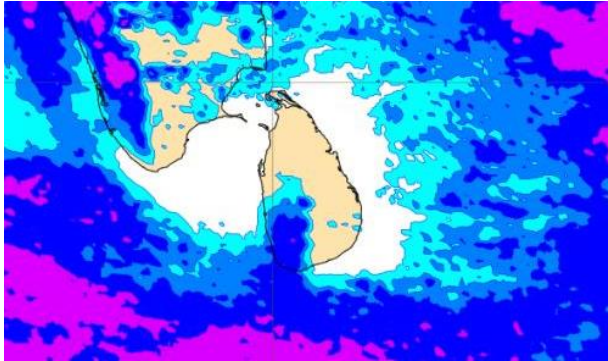
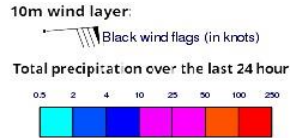
## Wind Gust (m/s)



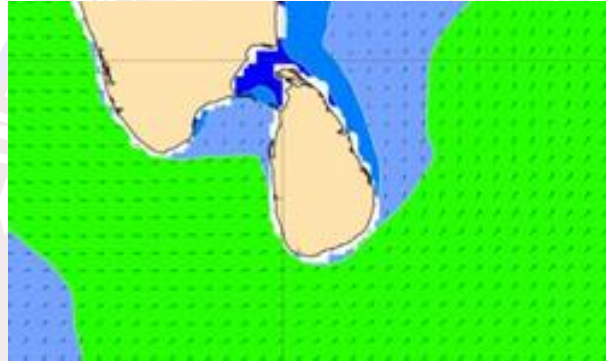
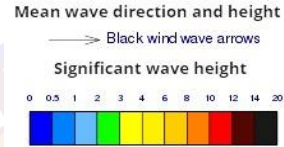
Showers may occur at a few places in the sea areas off the coast extending from Colombo to Matara via Galle.

Wind speed will be 30-40 kmph in the sea areas around the island. The sea area extending from Puttalam to Pottuvil via Colombo, Galle and Hambantota can be rough at times as the wind speed may increase up to 50-60 kmph at times.

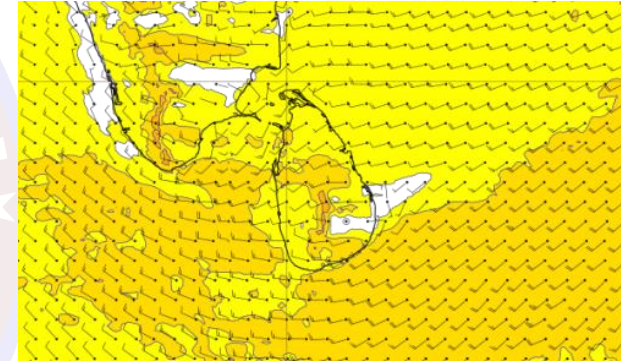
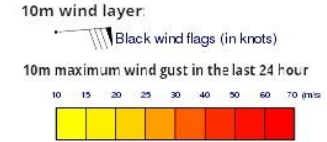
## Wind and Rainfall Forecast (Total precipitation for 24 hrs)



## Significant wave height (in meters)



## Wind Gust (m/s)

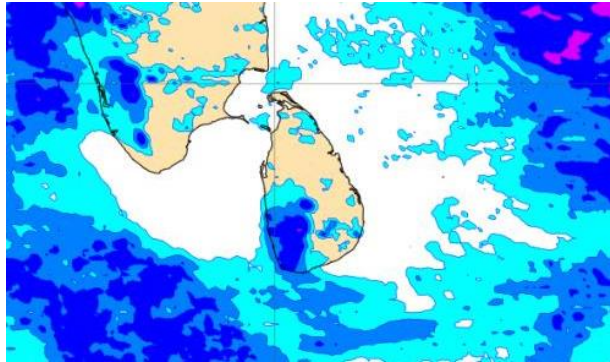
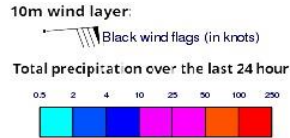


Showers will occur at a few places in the sea areas off the coast extending from Colombo to Matara via Galle.

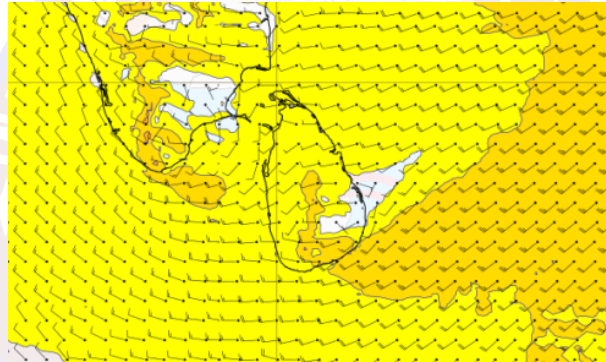
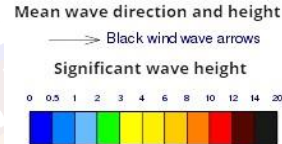
Wind speed will be 30-40 kmph in the sea areas around the island. The sea area extending from Puttalam to Pottuvil via Colombo, Galle and Hambantota can be rough at times as the wind speed may increase up to 50-60 kmph at times.



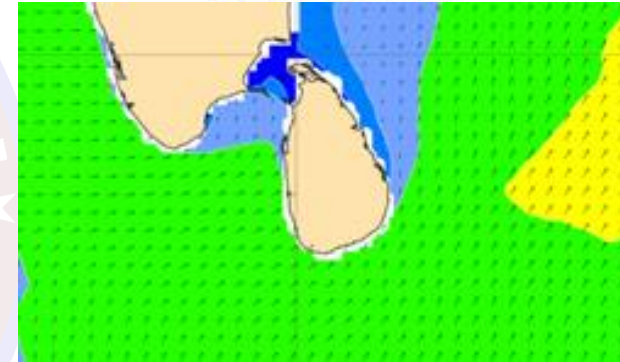
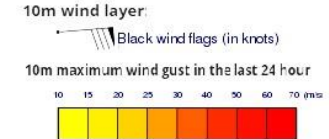
## Wind and Rainfall Forecast (Total precipitation for 24 hrs)



## Significant wave height (in meters)



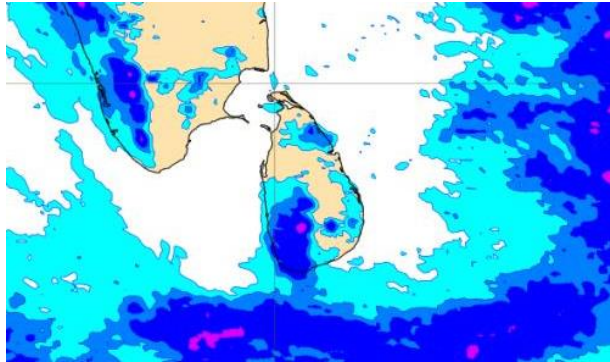
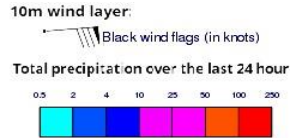
## Wind Gust (m/s)



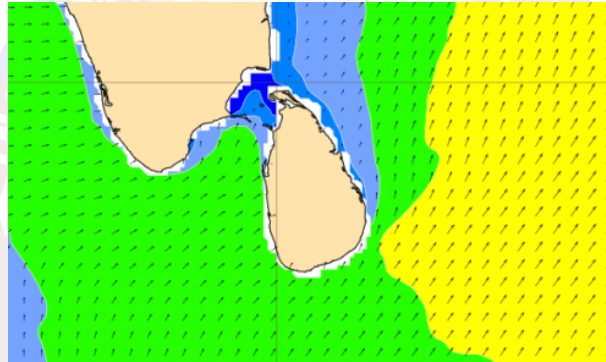
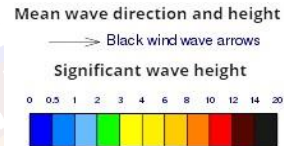
Showers will occur at a few places in the sea areas off the coast extending from Colombo to Matara via Galle.

Wind speed will be 30-40 kmph in the sea areas around the island. The sea area extending from Puttalam to Pottuvil via Colombo, Galle and Hambantota can be rough at times as the wind speed may increase up to 50-60 kmph at times.

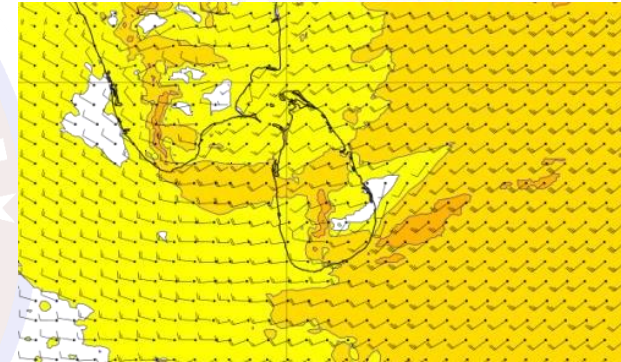
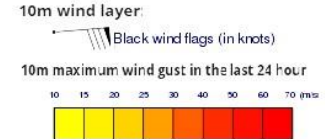
## Wind and Rainfall Forecast (Total precipitation for 24 hrs)



## Significant wave height (in meters)



## Wind Gust (m/s)



Showers will occur at a few places in the sea areas off the coast extending from Colombo to Matara via Galle.

Wind speed will be 30-40 kmph in the sea areas around the island. The sea area extending from Puttalam to Pottuvil via Colombo, Galle and Hambantota can be rough at times as the wind speed may increase up to 50-60 kmph at times.