



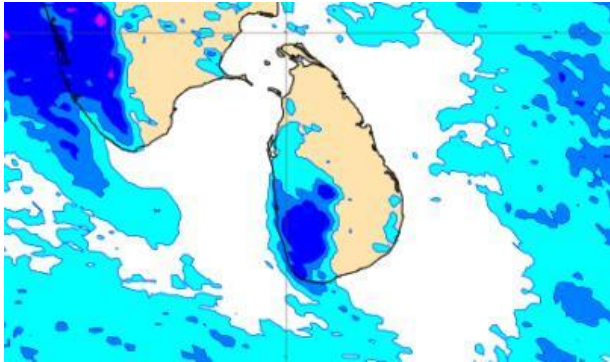
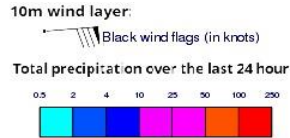
INFORMATION FUSION CENTRE COLOMBO

8 DAY FORECAST FOR COASTAL AREAS AROUND SRI LANKA

Issued at 10.00 p.m. on 26 June 2022
Marine Weather Division, National Meteorological Centre, Department of
Meteorology.



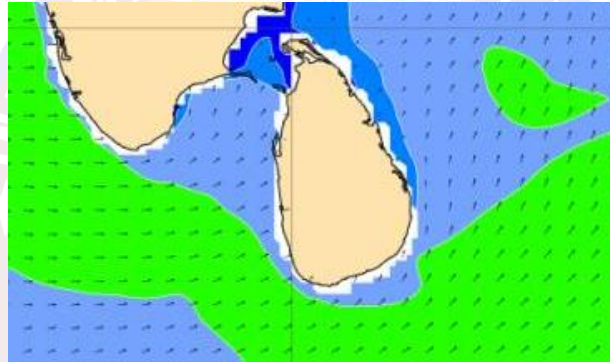
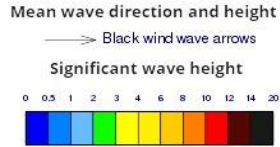
Wind and Rainfall Forecast (Total precipitation for 24 hrs)



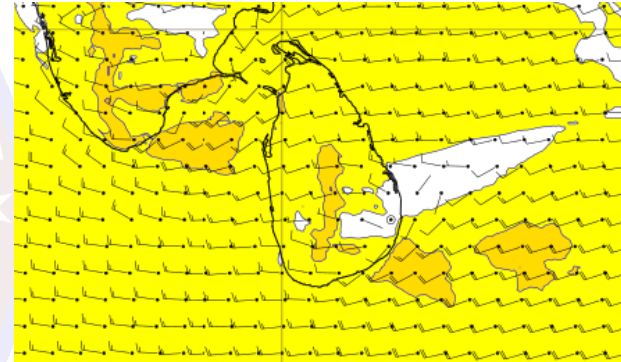
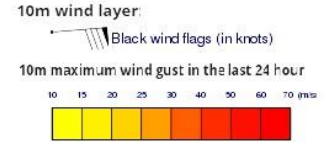
Showers will occur at a few places in the sea areas off the coast extending from Puttalam to Matara via Colombo and Galle.

Wind speed will be 20-40 kmph in the sea areas around the island. The sea area extending from Kankasanturai to Puttalam via Mannar and the sea area extending from Hambantota to Pottuvil can be rough at times as the wind speed may increase up to 45-55 kmph at times.

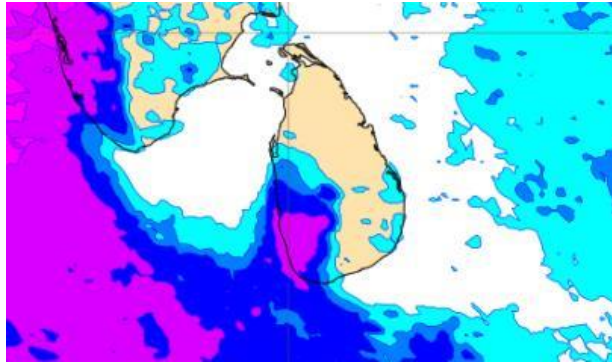
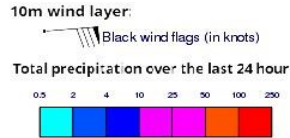
Significant wave height (in meters)



Wind Gust (m/s)



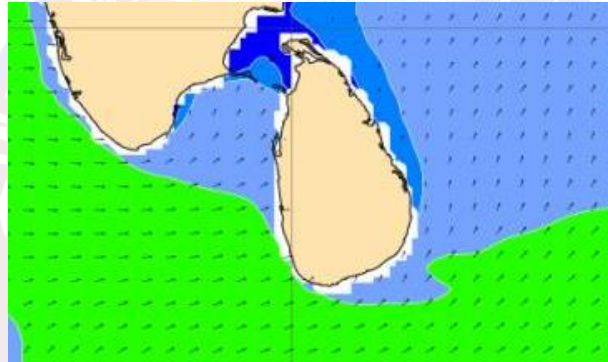
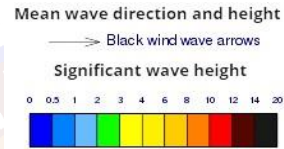
Wind and Rainfall Forecast (Total precipitation for 24 hrs)



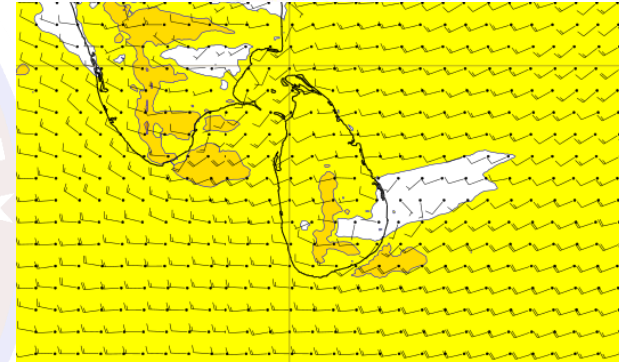
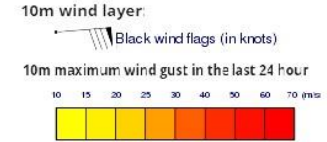
Showers will occur at several places in the sea areas off the coast extending from Puttalam to Matara via Colombo and Galle.

Wind speed will be 25-35 kmph in the sea areas around the island. The sea area extending from Kankasanturai to Puttalam via Mannar and the sea area extending from Hambantota to Pottuvil can be fairly rough at times as the wind speed may increase up to 45-50 kmph at times.

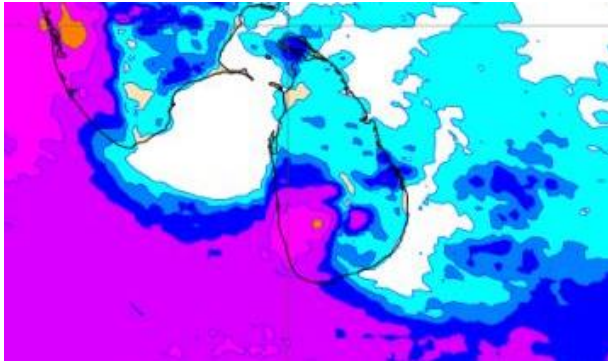
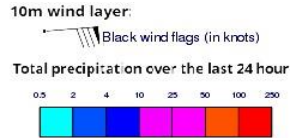
Significant wave height (in meters)



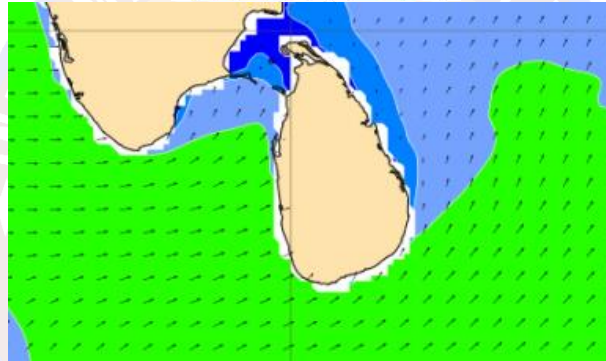
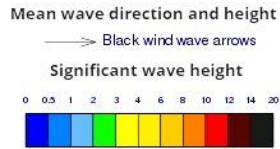
Wind Gust (m/s)



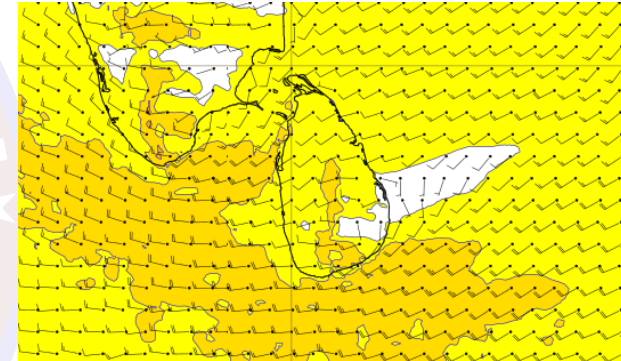
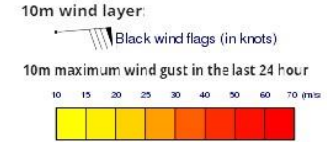
Wind and Rainfall Forecast (Total precipitation for 24 hrs)



Significant wave height (in meters)



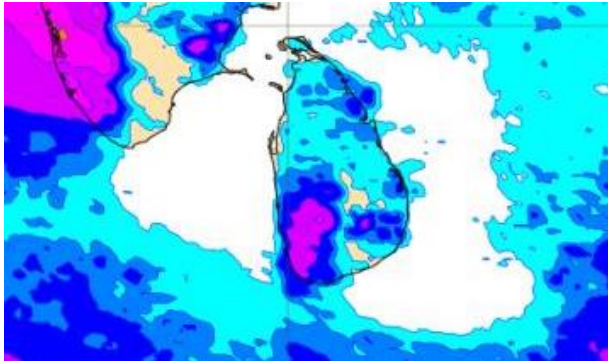
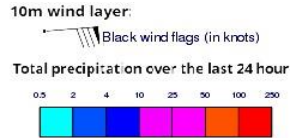
Wind Gust (m/s)



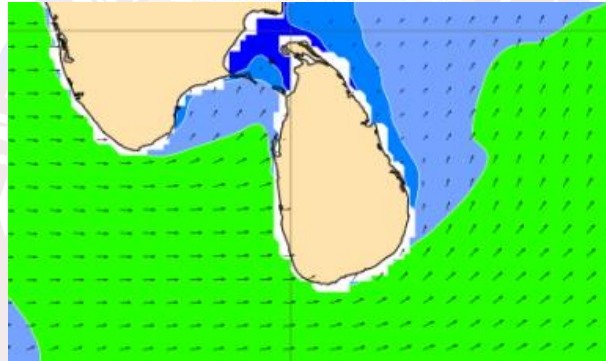
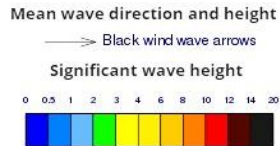
Showers or thundershowers will occur at several places in the sea areas off the coast extending from Puttalam to Matara via Colombo and Galle.

Wind speed will be 30-40 kmph in the sea areas around the island. The sea area extending from Mannar to Pottuvil via Puttalam, Colombo, Galle and Hambantota can be rough at times as the wind speed may increase up to 50-60 kmph at times.

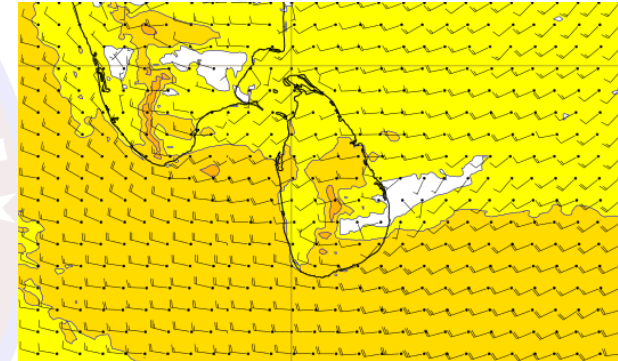
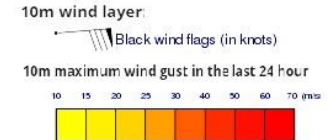
Wind and Rainfall Forecast (Total precipitation for 24 hrs)



Significant wave height (in meters)



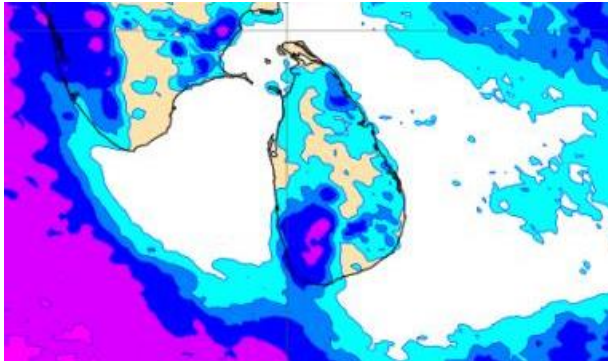
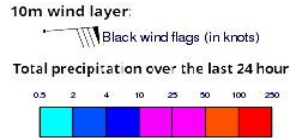
Wind Gust (m/s)



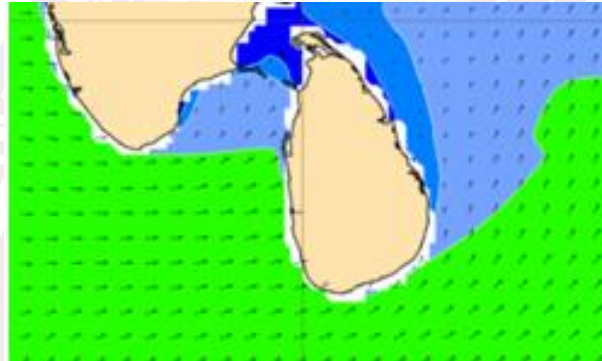
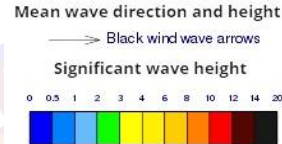
Showers will occur at a few places in the sea areas off the coast extending from Colombo to Matara via Galle.

Wind speed will be 30-40 kmph in the sea areas around the island. The sea area extending from Mannar to Pottuvil via Puttalam, Colombo, Galle and Hambantota can be rough at times as the wind speed may increase up to 50-60 kmph at times.

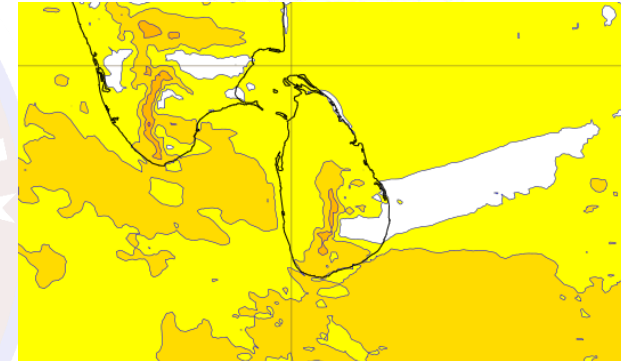
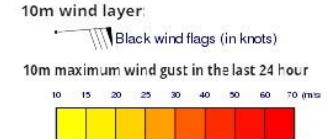
Wind and Rainfall Forecast (Total precipitation for 24 hrs)



Significant wave height (in meters)



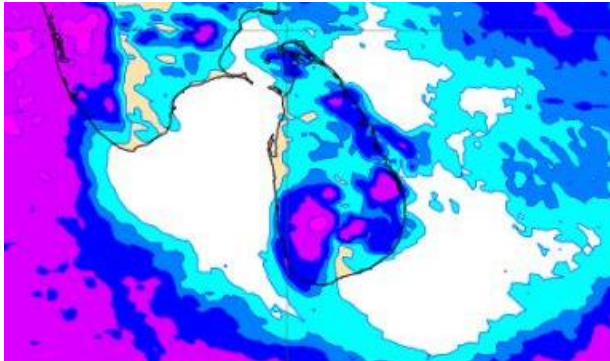
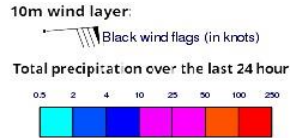
Wind Gust (m/s)



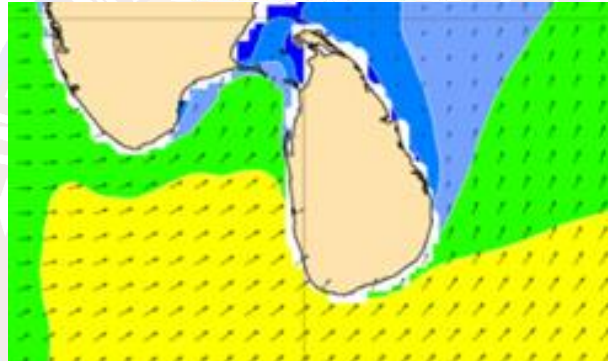
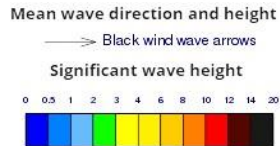
Mainly fair weather will prevail over sea areas around the island.

Wind speed will be 30-40 kmph in the sea areas around the island. The sea area extending from Puttalam to Pottuvil via Colombo, Galle and Hambantota can be rough at times as the wind speed may increase up to 50-60 kmph at times.

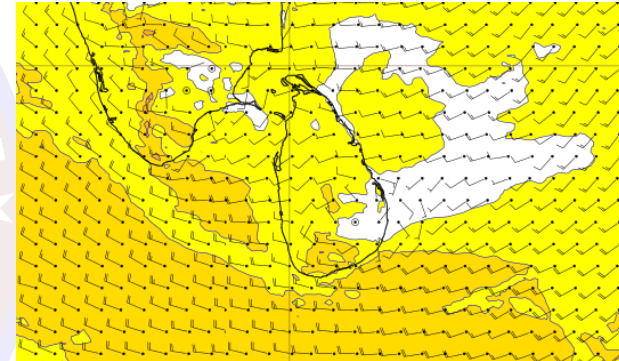
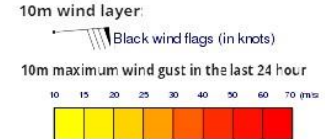
Wind and Rainfall Forecast (Total precipitation for 24 hrs)



Significant wave height (in meters)



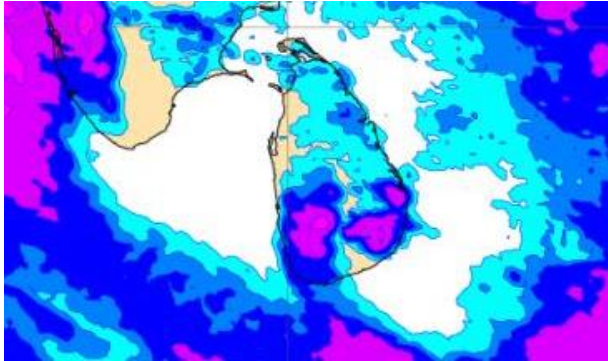
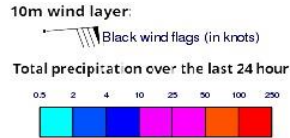
Wind Gust (m/s)



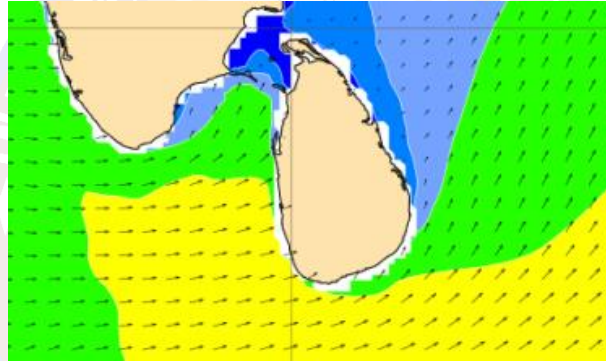
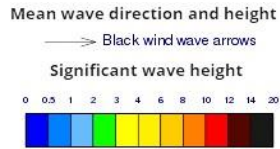
Mainly fair weather will prevail over sea areas around the island.

Wind speed will be 30-40 kmph in the sea areas around the island. The sea area extending from Puttalam to Pottuvil via Colombo, Galle and Hambantota can be rough at times as the wind speed may increase up to 50-60 kmph at times.

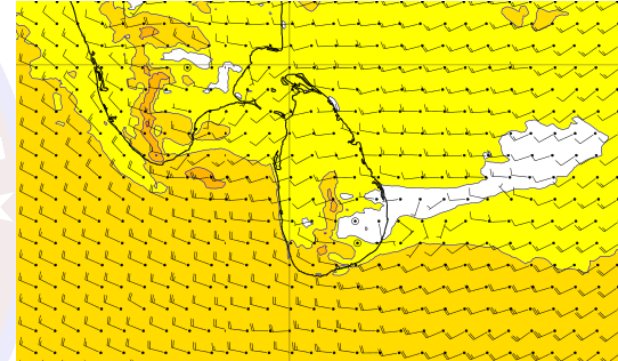
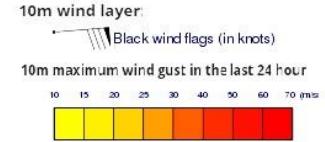
Wind and Rainfall Forecast (Total precipitation for 24 hrs)



Significant wave height (in meters)



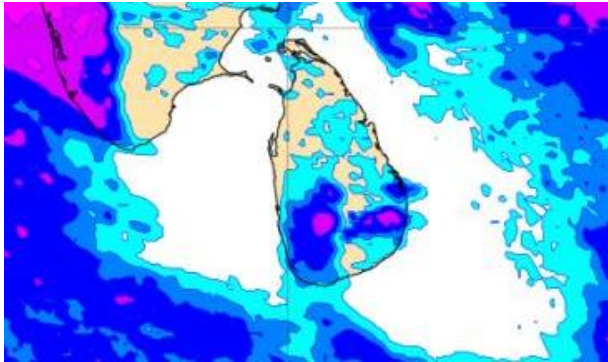
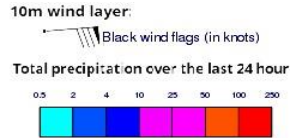
Wind Gust (m/s)



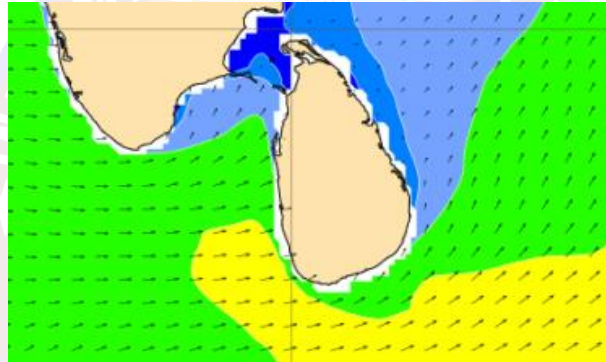
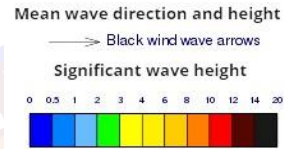
Showers will occur at a few places in the sea areas off the coast extending from Colombo to Matara via Galle.

Wind speed will be 30-40 kmph in the sea areas around the island. The sea area extending from Puttalam to Pottuvil via Colombo, Galle and Hambantota can be rough at times as the wind speed may increase up to 50-60 kmph at times.

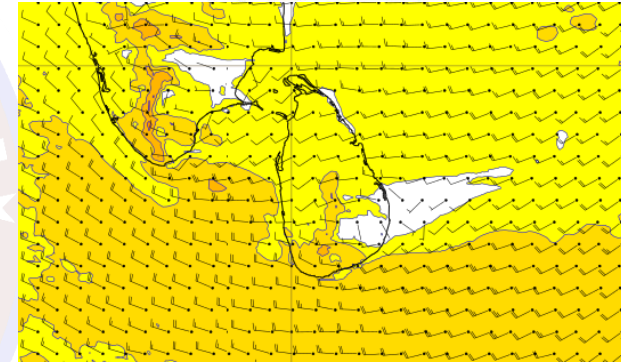
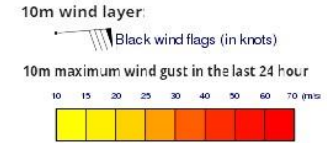
Wind and Rainfall Forecast (Total precipitation for 24 hrs)



Significant wave height (in meters)



Wind Gust (m/s)



Showers will occur at a few places in the sea areas off the coast extending from Colombo to Matara via Galle.

Wind speed will be 30-40 kmph in the sea areas around the island. The sea area extending from Puttalam to Pottuvil via Colombo, Galle and Hambantota can be rough at times as the wind speed may increase up to 50-60 kmph at times.