



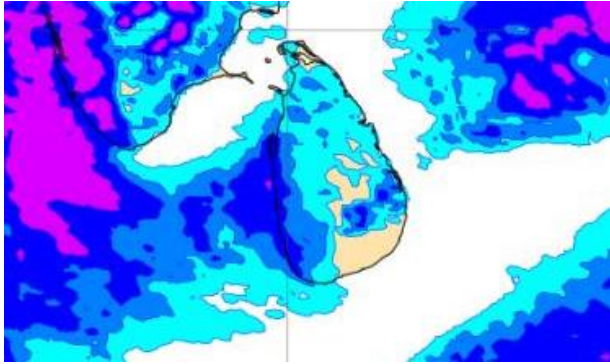
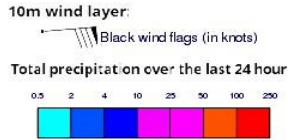
INFORMATION FUSION CENTRE COLOMBO

8 DAY FORECAST FOR COASTAL AREAS AROUND SRI LANKA

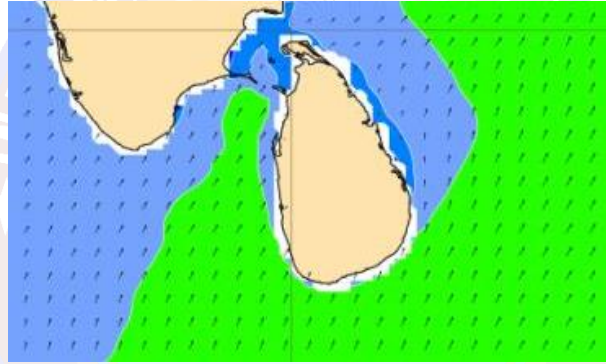
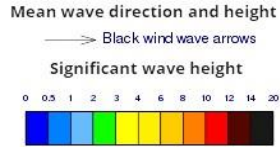
Issued at 10.00 p.m. on 10 June 2022
Marine Weather Division, National Meteorological Centre, Department of
Meteorology.



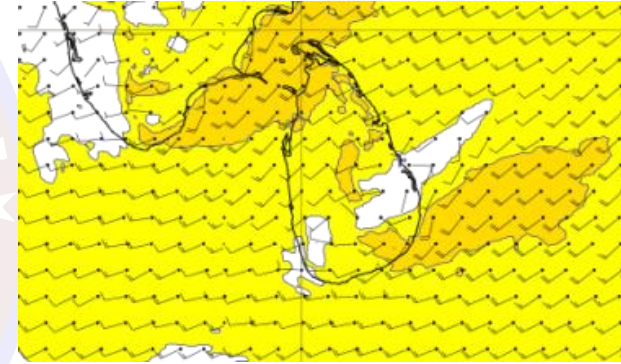
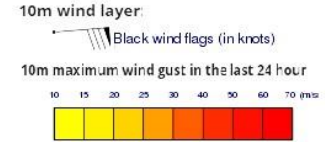
Wind and Rainfall Forecast (Total precipitation for 24 hrs)



Significant wave height (in meters)



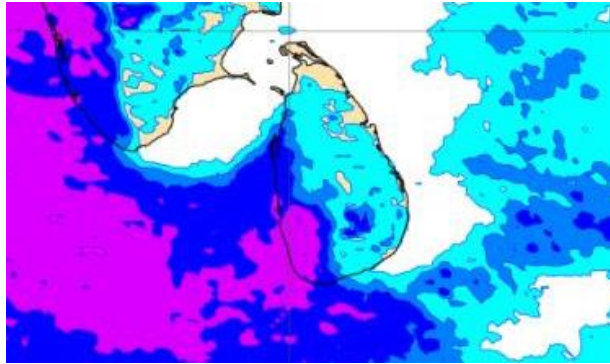
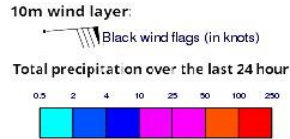
Wind Gust (m/s)



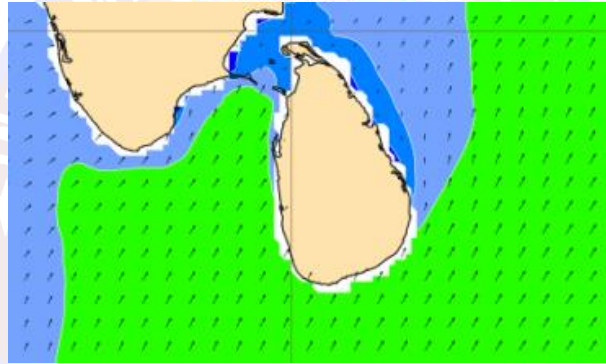
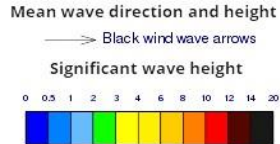
Several spells of showers will occur in the sea areas off the coast extending from Puttalam to Hambantota via Colombo, Galle and Matara.

Wind speed will be 30-40 kmph in the sea areas around the island. The sea area extending from Kankasanturai to Puttalam via Mannar and the sea area extending from Hambantota to Pottuvil can be rough at times as the wind speed may increase up to 50-60 kmph at times.

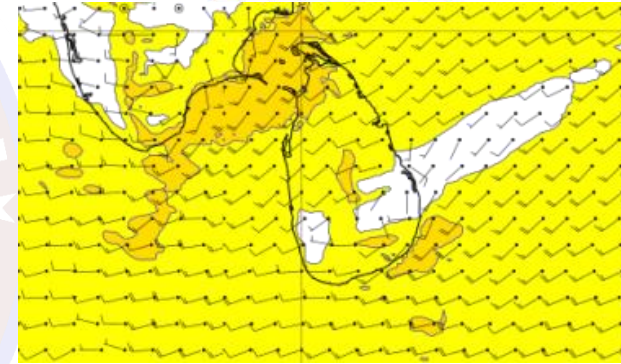
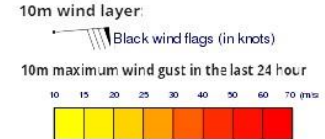
Wind and Rainfall Forecast (Total precipitation for 24 hrs)



Significant wave height (in meters)



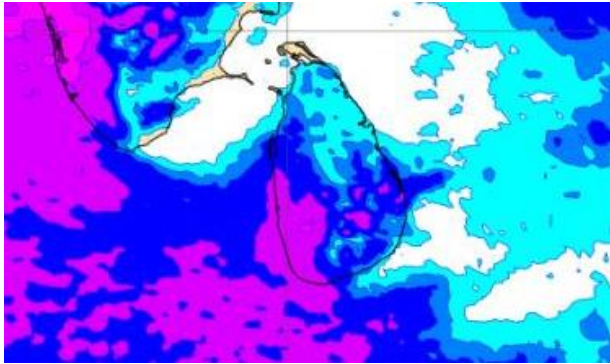
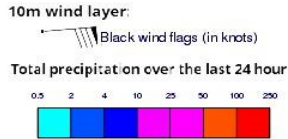
Wind Gust (m/s)



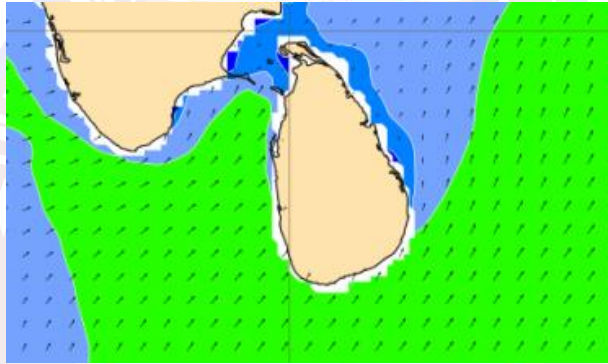
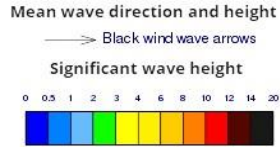
Showers or thundershowers will occur at several places in the sea areas off the coast extending from Puttalam to Matara via Colombo and Galle.

Wind speed will be 30-40 kmph in the sea areas around the island. The sea area extending from Kankasanturai to Puttalam via Mannar and the sea area extending from Hambantota to Pottuvil can be rough at times as the wind speed may increase up to 50-60 kmph at times..

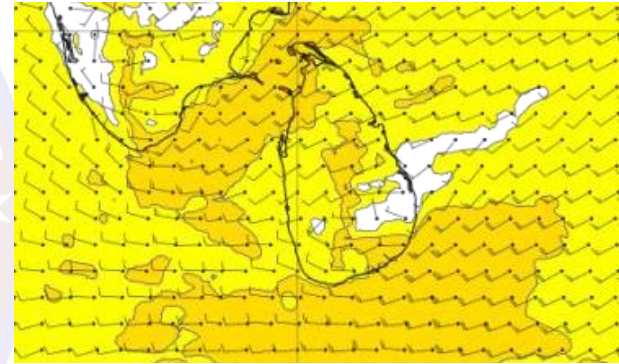
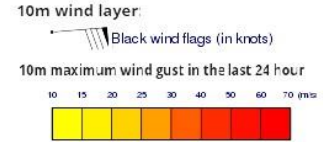
Wind and Rainfall Forecast (Total precipitation for 24 hrs)



Significant wave height (in meters)



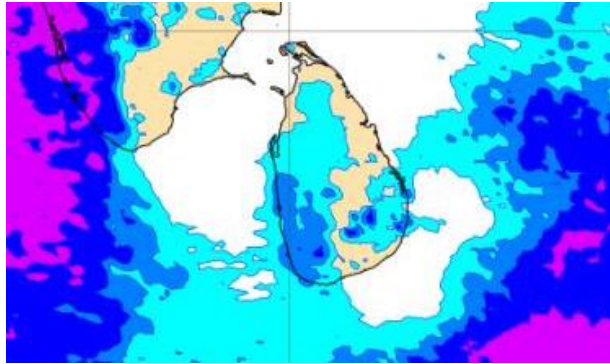
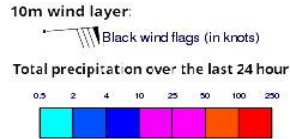
Wind Gust (m/s)



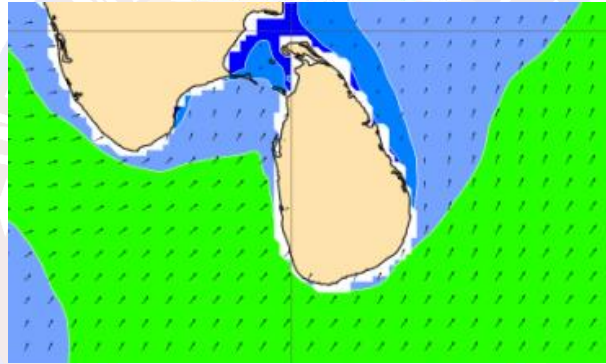
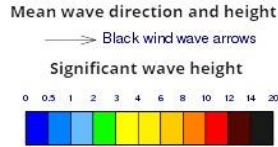
Showers or thundershowers will occur at several places in the sea areas off the coast extending from Puttalam to Matara via Colombo and Galle. Showers or thundershowers may occur at a few places in the sea area extending from Pottuvil to Trincomalee via Batticaloa in the afternoon or night.

Wind speed will be 30-40 kmph in the sea areas around the island. The sea area extending from Kankasanturai to Puttalam via Mannar and the sea area extending from Galle to Pottuvil via Hambantota can be rough at times as the wind speed may increase up to 50-60 kmph at times.

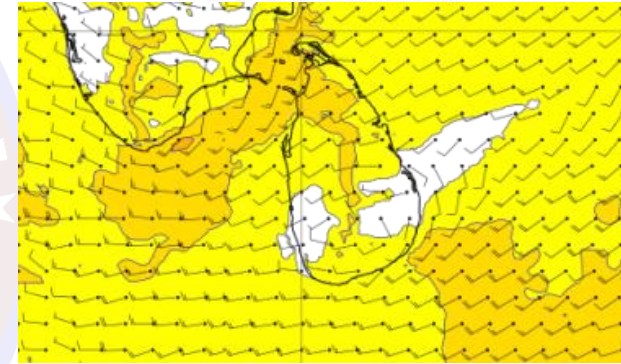
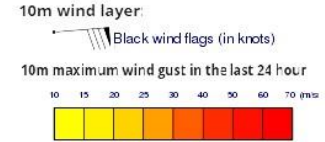
Wind and Rainfall Forecast (Total precipitation for 24 hrs)



Significant wave height (in meters)



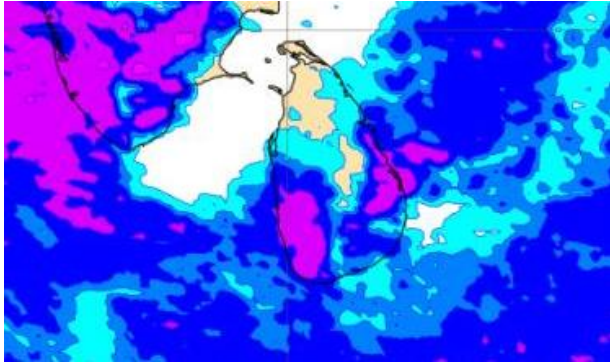
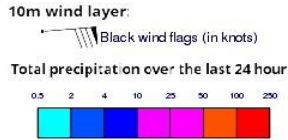
Wind Gust (m/s)



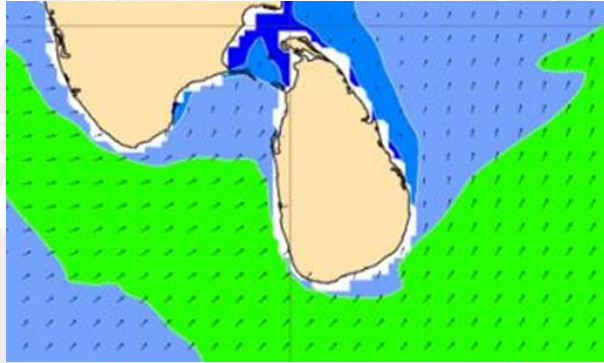
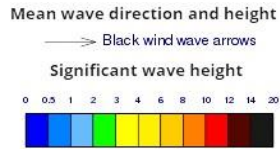
Several spells of showers will occur in the sea areas off the coast extending from Mannar to Matara via Puttalam, Colombo and Galle.

Wind speed will be 30-40 kmph in the sea areas around the island. The sea area extending from Kankasanturai to Puttalam via Mannar and the sea area extending from Hambantota to Pottuvil can be rough at times as the wind speed may increase up to 50-60 kmph at times.

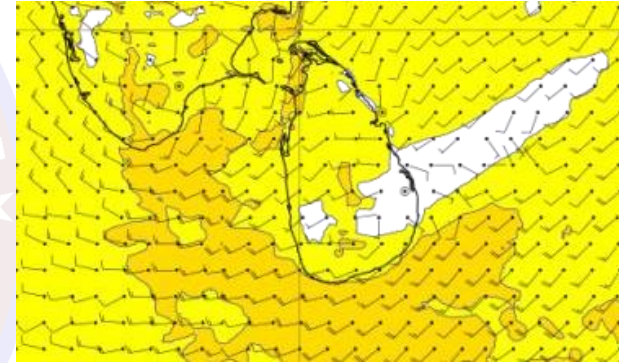
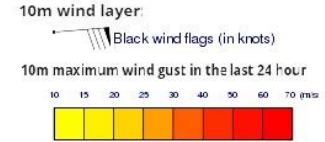
Wind and Rainfall Forecast (Total precipitation for 24 hrs)



Significant wave height (in meters)



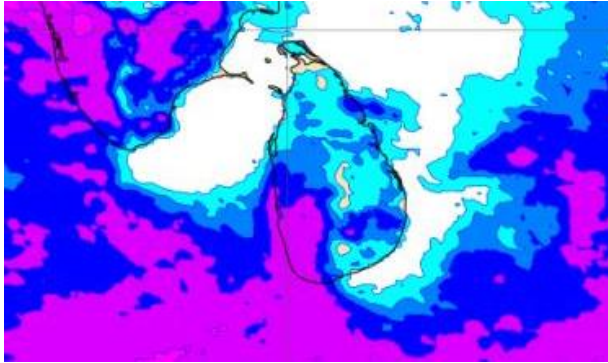
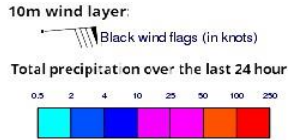
Wind Gust (m/s)



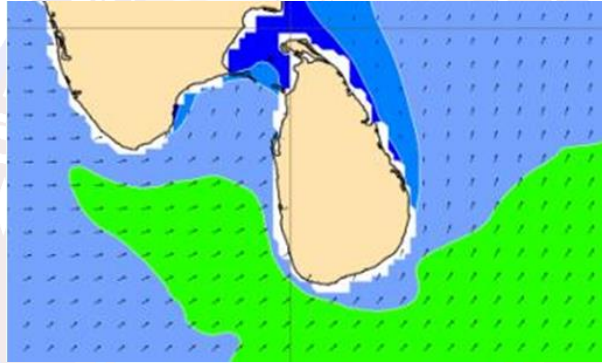
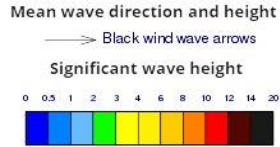
Showers or thundershowers will occur at several places in the sea areas off the coast extending from Puttalam to Hambantota via Colombo, Galle and Matara. Showers or thundershowers may occur at several places in the sea area extending from Pottuvil to Trincomalee via Batticaloa in the afternoon or night.

Wind speed will be 30-40 kmph in the sea areas around the island. The sea area extending from Kankasanturai to Colombo via Puttalam and the sea area extending from Matara to Pottuvil via Hambantota can be rough at times as the wind speed may increase up to 50-60 kmph at times.

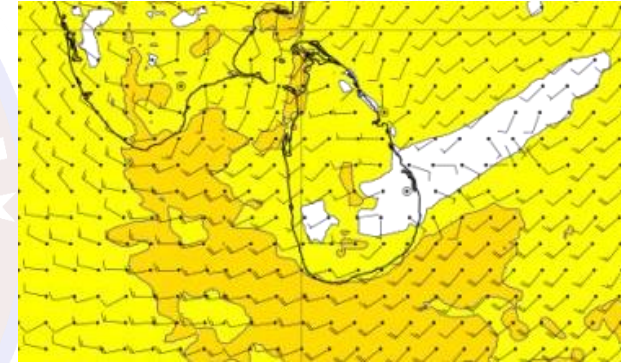
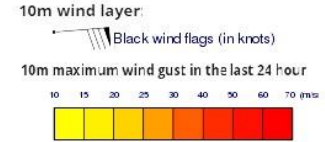
Wind and Rainfall Forecast (Total precipitation for 24 hrs)



Significant wave height (in meters)



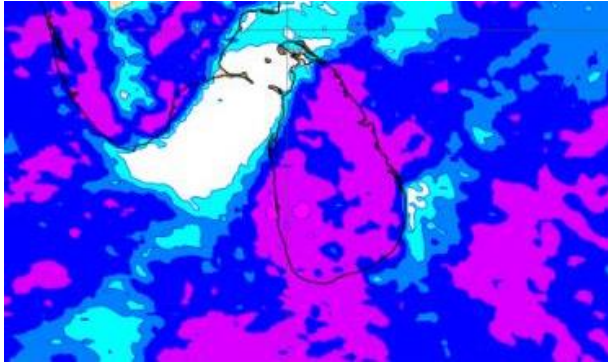
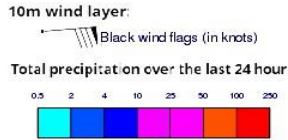
Wind Gust (m/s)



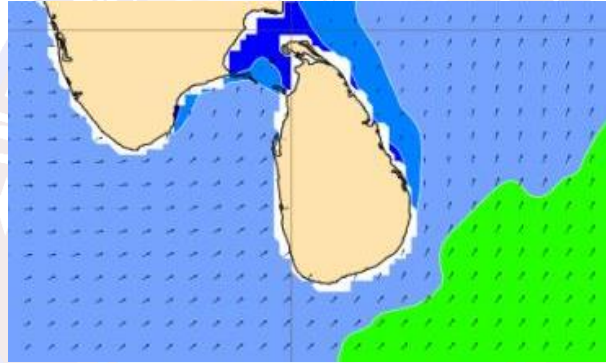
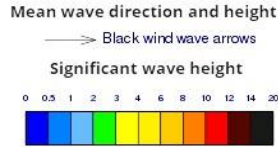
Showers or thundershowers will occur at several places in the sea areas off the coast extending from Colombo to Hambantota via Galle and Matara. Showers or thundershowers may occur at a few places in the sea area extending from Pottuvil to Trincomalee via Batticaloa in the afternoon or night.

Wind speed will be 30-40 kmph in the sea areas around the island. The sea area extending from Kankasanturai to Puttalam via Mannar and the sea area extending from Galle to Pottuvil via Hambantota can be rough at times as the wind speed may increase up to 50-60 kmph at times.

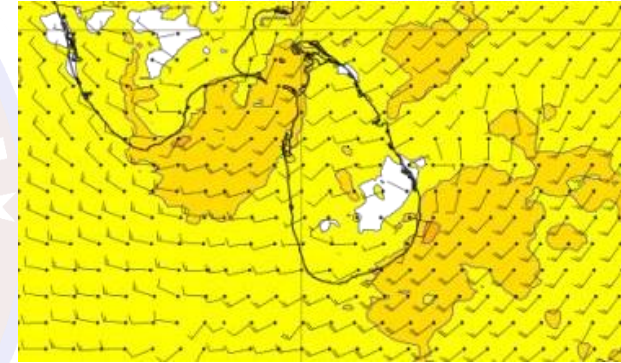
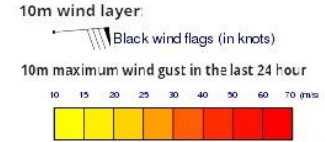
Wind and Rainfall Forecast (Total precipitation for 24 hrs)



Significant wave height (in meters)



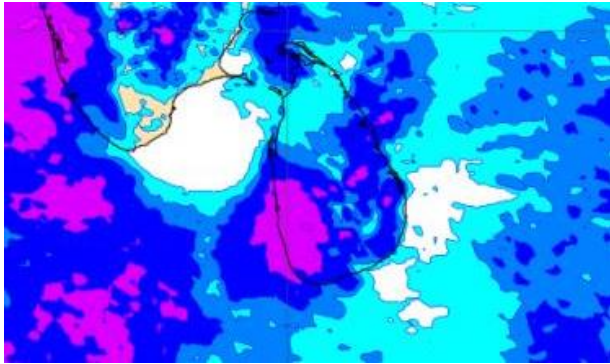
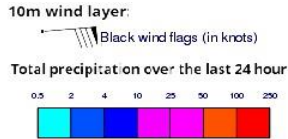
Wind Gust (m/s)



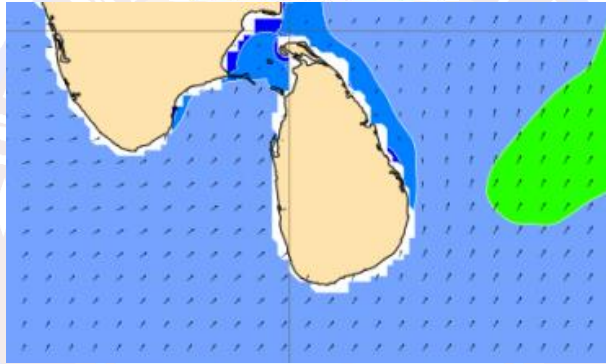
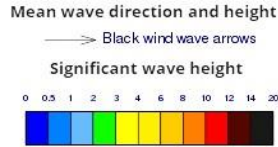
Showers or thundershowers will occur at several places in the sea areas off the coast extending from Puttalam to Hambantota via Colombo, Galle and Matara. Showers or thundershowers may occur at several places in the sea area extending from Pottuvil to Trincomalee via Batticaloa in the afternoon or night.

Wind speed will be 30-40 kmph in the sea areas around the island. The sea area extending from Kankasanturai to Puttalam via Mannar and the sea area extending from Hambantota to Pottuvil can be rough at times as the wind speed may increase up to 50-60 kmph at times.

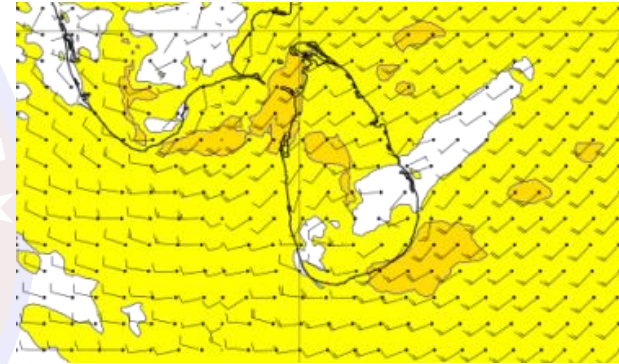
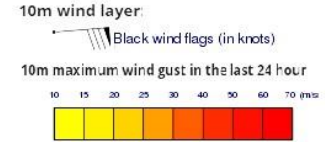
Wind and Rainfall Forecast (Total precipitation for 24 hrs)



Significant wave height (in meters)



Wind Gust (m/s)



Showers or thundershowers will occur at several places in the sea areas off the coast extending from Puttalam to Hambantota via Colombo, Galle and Matara. Showers or thundershowers may occur at several places in the sea area extending from Pottuvil to Trincomalee via Batticaloa in the afternoon or night.

Wind speed will be 30-40 kmph in the sea areas around the island. The sea area extending from Kankasanturai to Puttalam via Mannar and the sea area extending from Hambantota to Pottuvil can be rough at times as the wind speed may increase up to 50-60 kmph at times.