



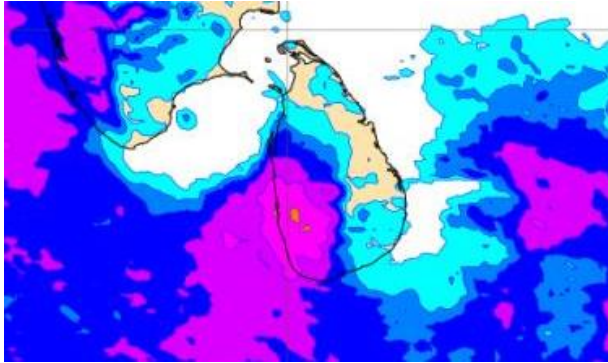
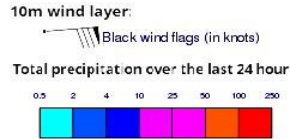
INFORMATION FUSION CENTRE COLOMBO

8 DAY FORECAST FOR COASTAL AREAS AROUND SRI LANKA

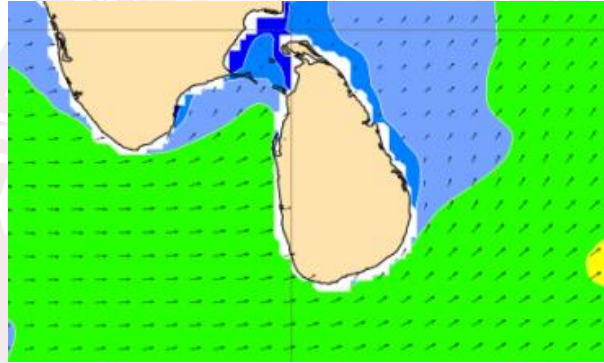
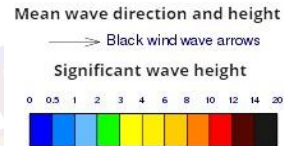
Issued at 10.00 p.m. on 01 June 2022
Marine Weather Division, National Meteorological Centre, Department of
Meteorology.



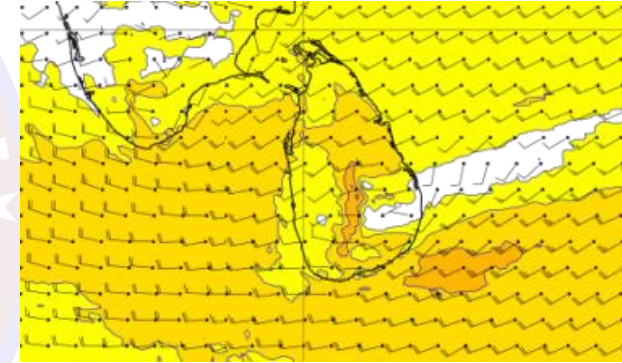
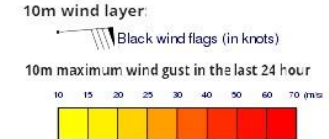
Wind and Rainfall Forecast (Total precipitation for 24 hrs)



Significant wave height (in meters)



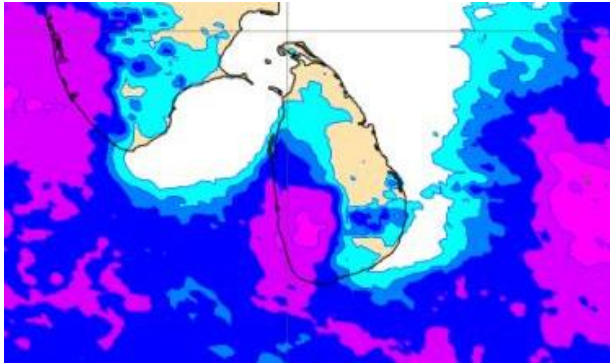
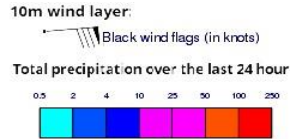
Wind Gust (m/s)



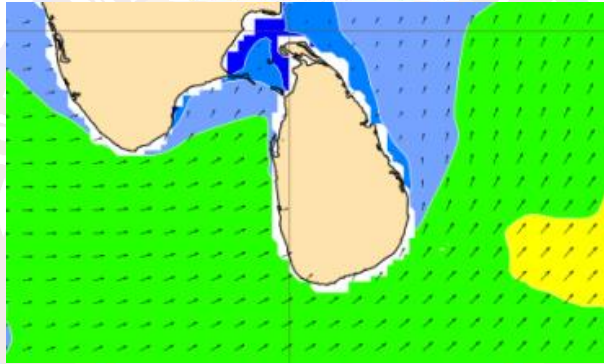
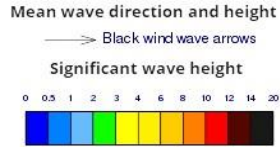
Showers or thundershowers will occur at times in the sea areas off the coast extending from Puttalam to Hambantota via Colombo and Galle..

Wind speed will be 30-40 kmph in the sea areas around the island. The sea area extending from Kankasanturai to Pottuvil via Puttalam, Colombo, Galle to and Hambantota can be rough at times as the wind speed may increase up to 55-65 kmph at times. Other sea areas may also be fairly rough as winds can increase up to 50 kmph.

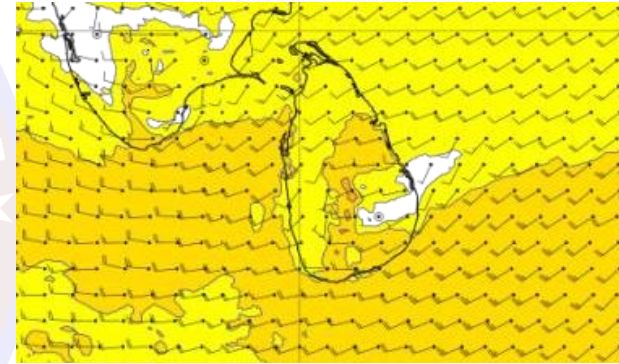
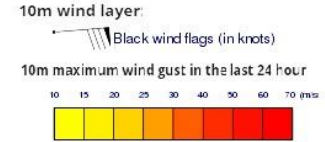
Wind and Rainfall Forecast (Total precipitation for 24 hrs)



Significant wave height (in meters)



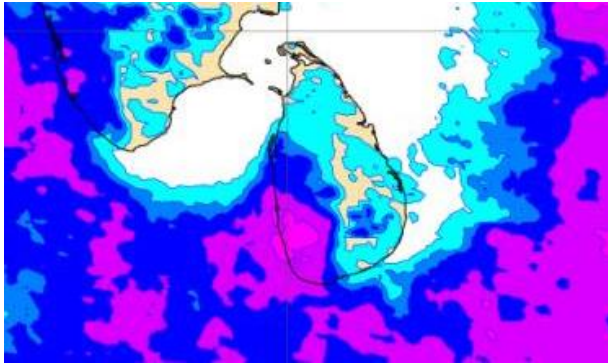
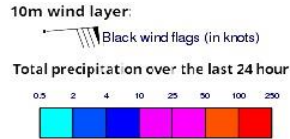
Wind Gust (m/s)



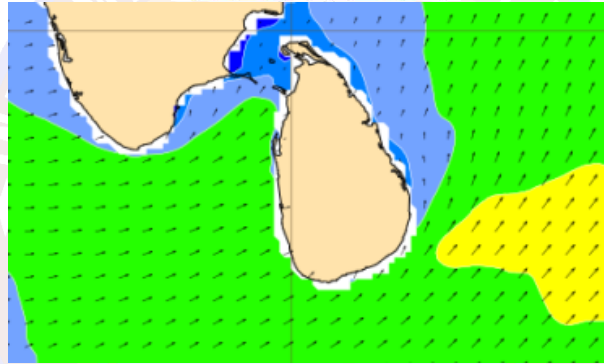
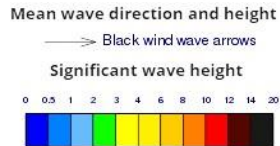
Showers or thundershowers will occur at times in the sea areas off the coast extending from Puttalam to Hambantota via Colombo and Galle.

Wind speed will be 30-40 kmph in the sea areas around the island. The sea area extending from Kankasanturai to Pottuvil via Puttalam, Colombo, Galle to and Hambantota can be rough at times as the wind speed may increase up to 55-60 kmph at times. Other sea areas may also be fairly rough as winds can increase up to 50 kmph.

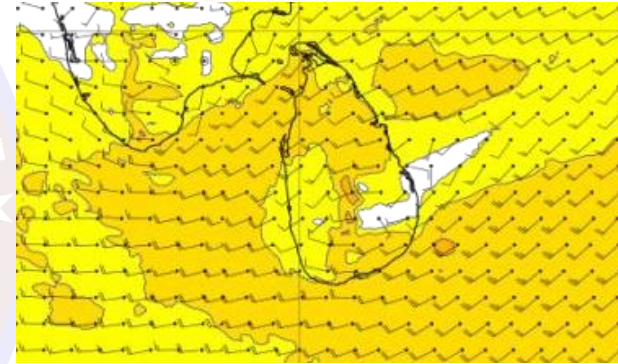
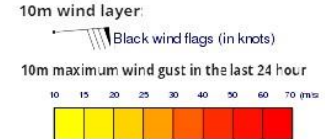
Wind and Rainfall Forecast (Total precipitation for 24 hrs)



Significant wave height (in meters)



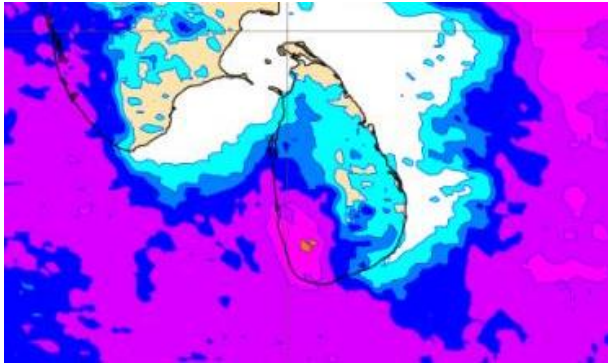
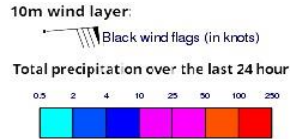
Wind Gust (m/s)



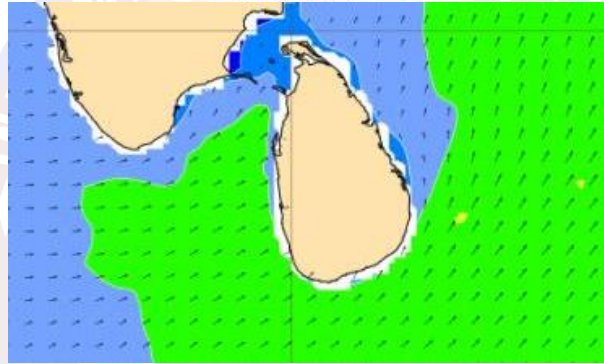
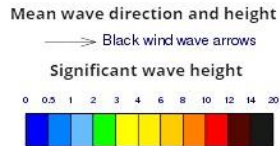
Showers or thundershowers will occur at times in the sea areas off the coast extending from Puttalam to Hambantota via Colombo and Galle.

Wind speed will be 30-40 kmph in the sea areas around the island. The sea area extending from Kankasanturai to Pottuvil via Puttalam, Colombo, Galle to and Hambantota can be rough at times as the wind speed may increase up to 55-60 kmph at times. Other sea areas may also be fairly rough as winds can increase up to 50 kmph.

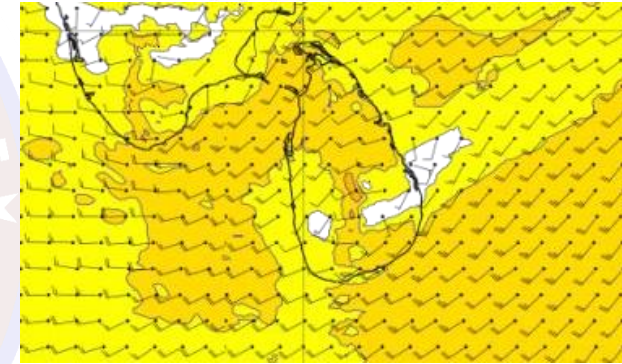
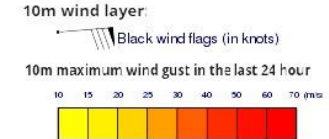
Wind and Rainfall Forecast (Total precipitation for 24 hrs)



Significant wave height (in meters)



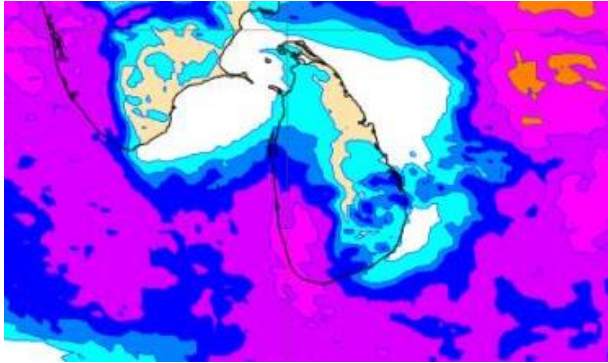
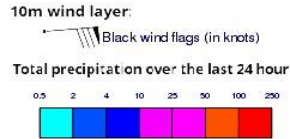
Wind Gust (m/s)



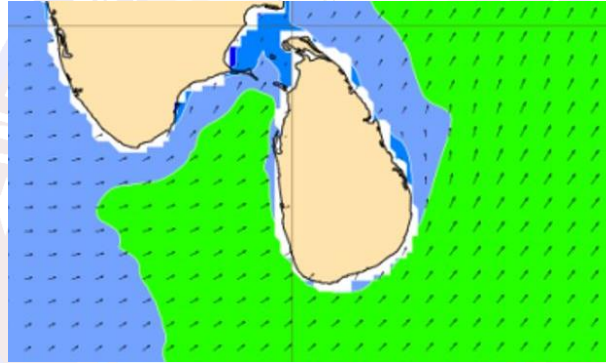
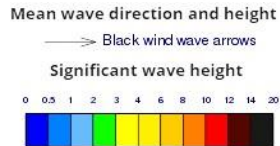
Showers or thundershowers will occur at times in the sea areas off the coast extending from Puttalam to Hambantota via Colombo and Galle.

Wind speed will be 30-40 kmph in the sea areas around the island. The sea area extending from Kankasanturai to Pottuvil via Puttalam, Colombo, Galle to and Hambantota can be rough at times as the wind speed may increase up to 55-60 kmph at times. Other sea areas may also be fairly rough as winds can increase up to 50 kmph.

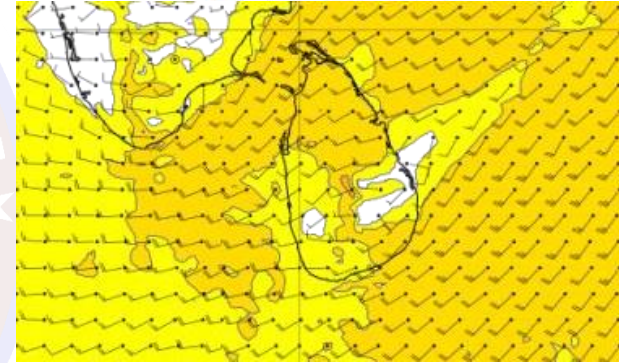
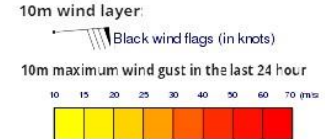
Wind and Rainfall Forecast (Total precipitation for 24 hrs)



Significant wave height (in meters)



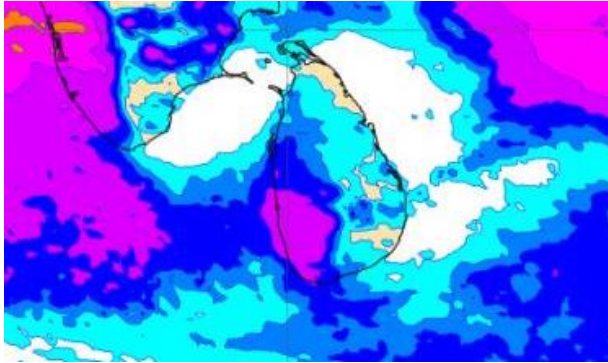
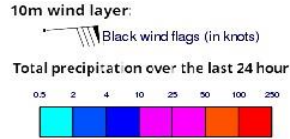
Wind Gust (m/s)



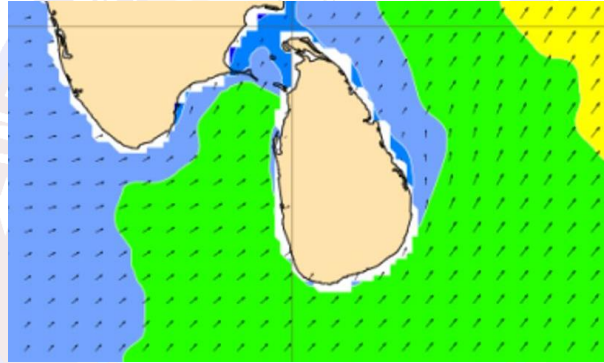
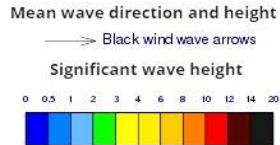
Showers or thundershowers will occur at times in the sea areas off the coast extending from Puttalam to Hambantota via Colombo and Galle.

Wind speed will be 30-40 kmph in the sea areas around the island. The sea area extending from Trincomalee to Colombo via Kankasanturai and Puttalam and the sea area extending from Galle to Pottuvil via Hambantota can be rough at times as the wind speed may increase up to 50-60 kmph at times. Other sea areas may also be fairly rough as winds can increase up to 50 kmph.

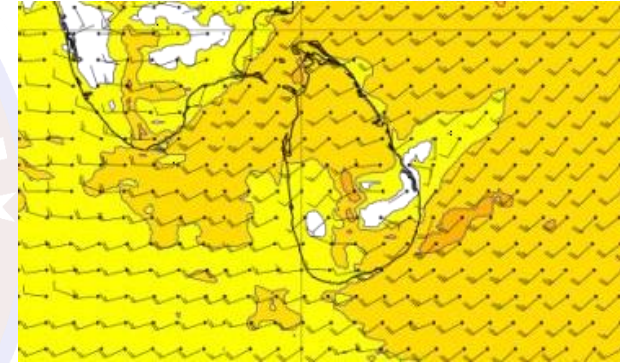
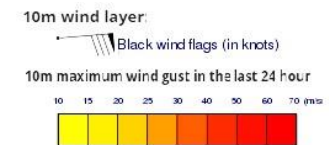
Wind and Rainfall Forecast (Total precipitation for 24 hrs)



Significant wave height (in meters)



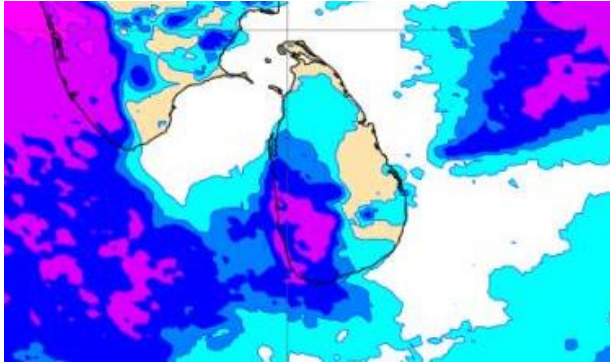
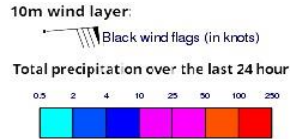
Wind Gust (m/s)



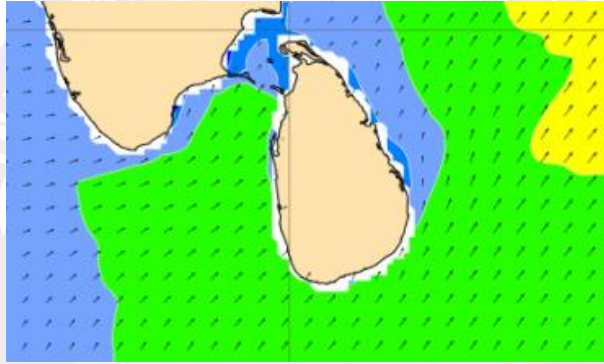
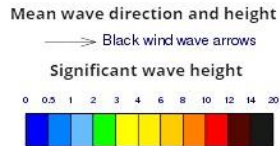
Showers or thundershowers will occur at times in the sea areas off the coast extending from Puttalam to Hambantota via Colombo and Galle.

Wind speed will be 30-40 kmph in the sea areas around the island. The sea area extending from Trincomalee to Colombo via Kankasanturai and Puttalam and the sea area extending from Galle to Pottuvil via Hambantota can be rough at times as the wind speed may increase up to 50-60 kmph at times. Other sea areas may also be fairly rough as winds can increase up to 50 kmph.

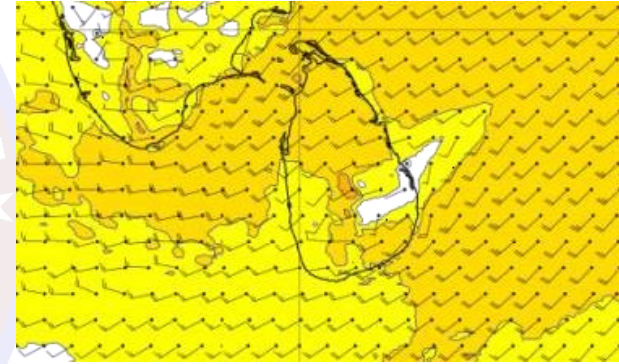
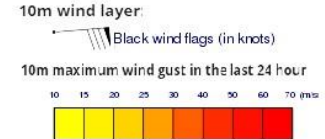
Wind and Rainfall Forecast (Total precipitation for 24 hrs)



Significant wave height (in meters)



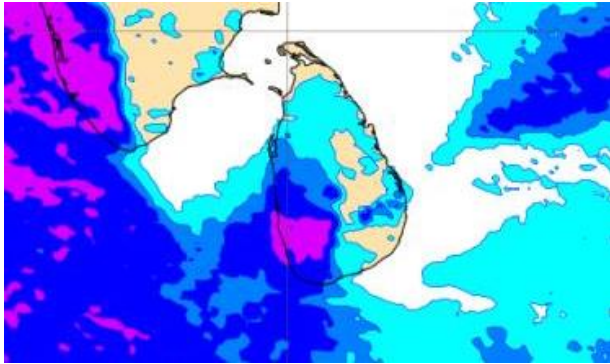
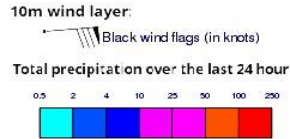
Wind Gust (m/s)



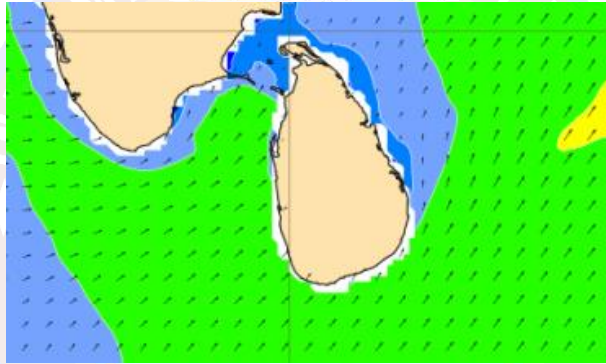
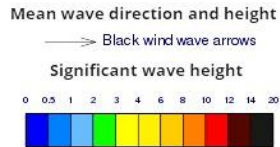
Showers or thundershowers will occur at several places in the sea areas off the coast extending from Puttalam to Matara via Colombo and Galle.

Wind speed will be 30-40 kmph in the sea areas around the island. The sea area extending from Trincomalee to Colombo via Kankasanturai and Puttalam and the sea area extending from Galle to Pottuvil via Hambantota can be rough at times as the wind speed may increase up to 50-60 kmph at times. Other sea areas may also be fairly rough as winds can increase up to 50 kmph.

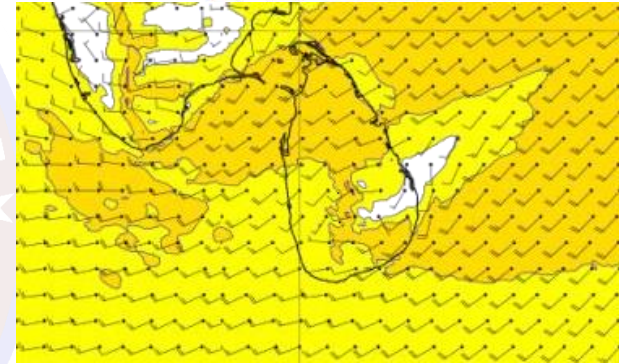
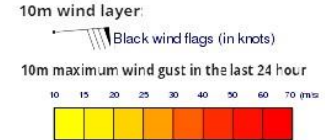
Wind and Rainfall Forecast (Total precipitation for 24 hrs)



Significant wave height (in meters)



Wind Gust (m/s)



Showers or thundershowers will occur at several places in the sea areas off the coast extending from Puttalam to Matara via Colombo and Galle.

Wind speed will be 30-40 kmph in the sea areas around the island. The sea area extending from Trincomalee to Colombo via Kankasanturai and Puttalam and the sea area extending from Galle to Pottuvil via Hambantota can be rough at times as the wind speed may increase up to 50-60 kmph at times. Other sea areas may also be fairly rough as winds can increase up to 50 kmph.