



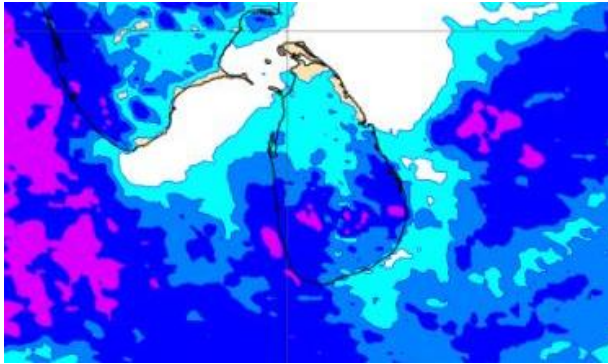
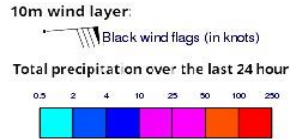
INFORMATION FUSION CENTRE COLOMBO

8 DAY FORECAST FOR COASTAL AREAS AROUND SRI LANKA

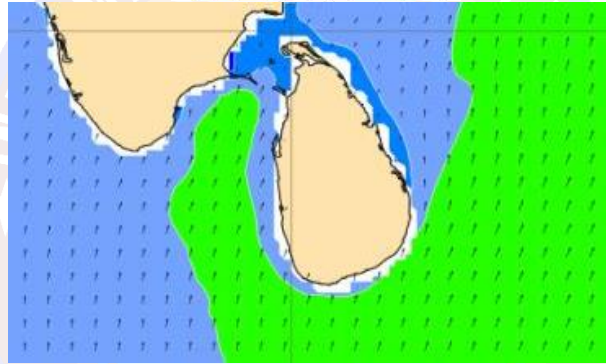
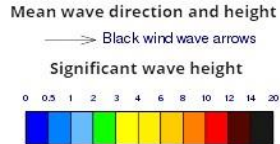
Issued at 10.00 p.m. on 24 May 2022 Marine Weather Division,
National Meteorological Centre, Department of Meteorology



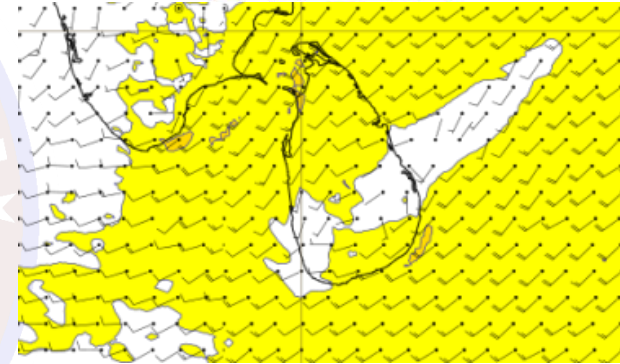
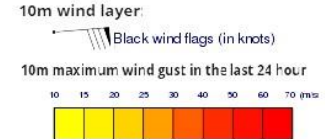
Wind and Rainfall Forecast (Total precipitation for 24 hrs)



Significant wave height (in meters)



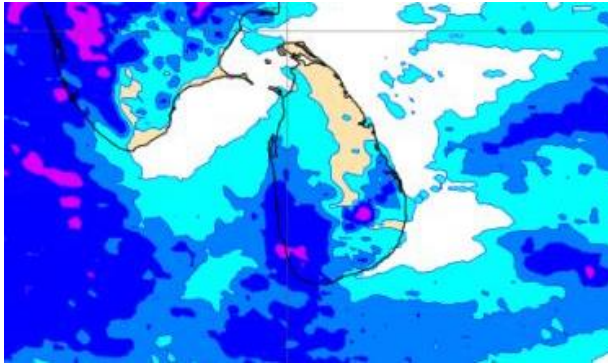
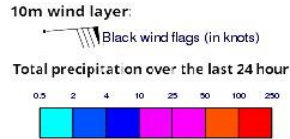
Wind Gust (m/s)



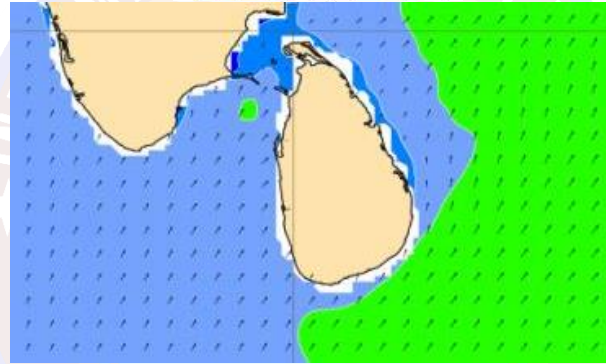
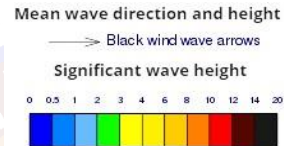
Showers or thundershowers will occur at several places in the sea area extending from Puttalam to Matara via Colombo and Galle.

Wind speed will be 30-40 kmph in the sea areas around the island. The sea area extending from Puttalam to Kankasanturai and Hambantota to Pottuvil can be rough at times as the wind speed may increase up to 55 kmph at times.

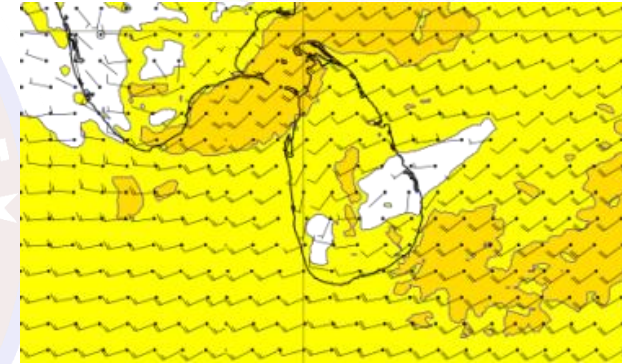
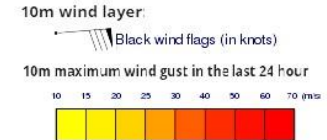
Wind and Rainfall Forecast (Total precipitation for 24 hrs)



Significant wave height (in meters)



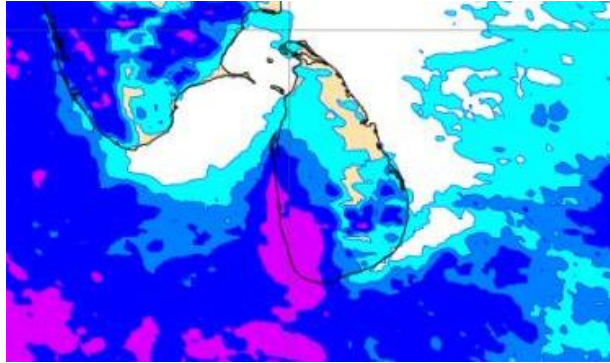
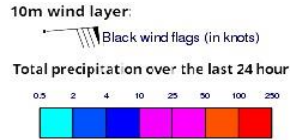
Wind Gust (m/s)



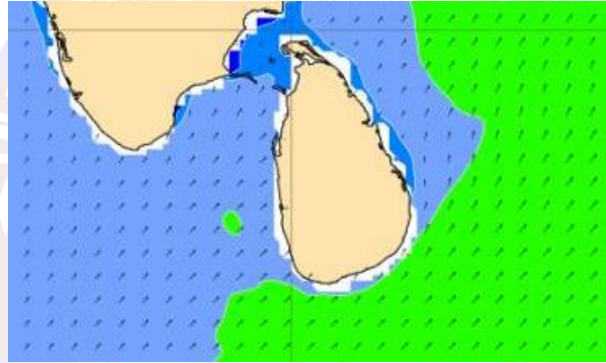
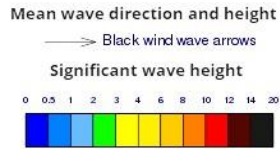
Showers or thundershowers will occur at several places in the sea area extending from Puttalam to Matara via Colombo and Galle.

Wind speed will be 30-40 kmph in the sea areas around the island. The sea area extending from Puttalam to Kankasanturai and Hambantota to Pottuvil can be rough at times as the wind speed may increase up to 50 kmph at times.

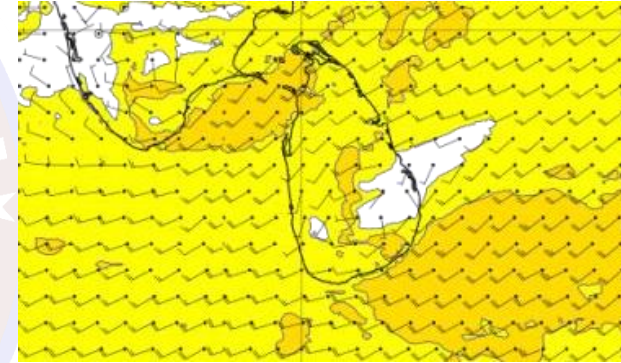
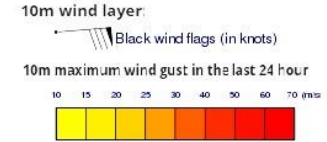
Wind and Rainfall Forecast (Total precipitation for 24 hrs)



Significant wave height (in meters)



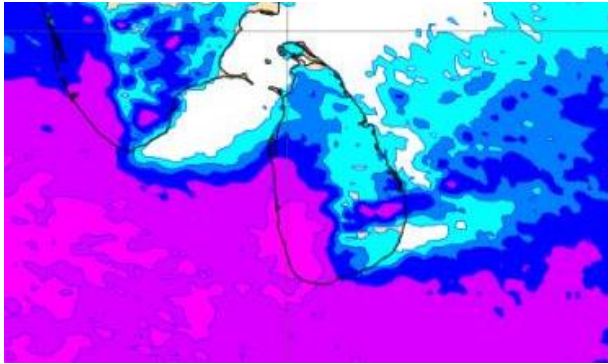
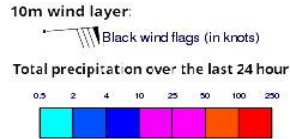
Wind Gust (m/s)



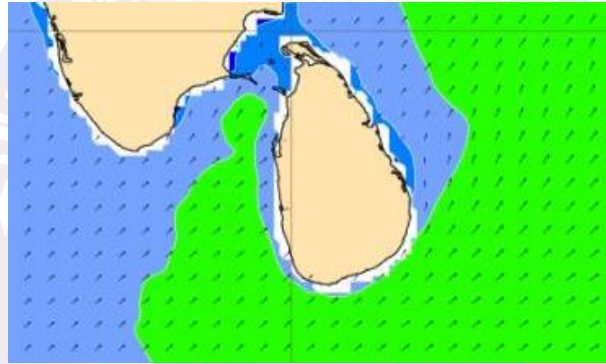
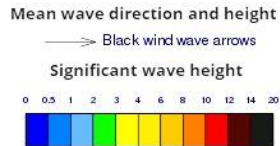
Showers or thundershowers will occur at several places in the sea area extending from Puttalam to Matara via Colombo and Galle.

Wind speed will be 30-40 kmph in the sea areas around the island. The sea area extending from Puttalam to Kankasanturai and Hambantota to Pottuvil can be rough at times as the wind speed may increase up to 55 kmph at times.

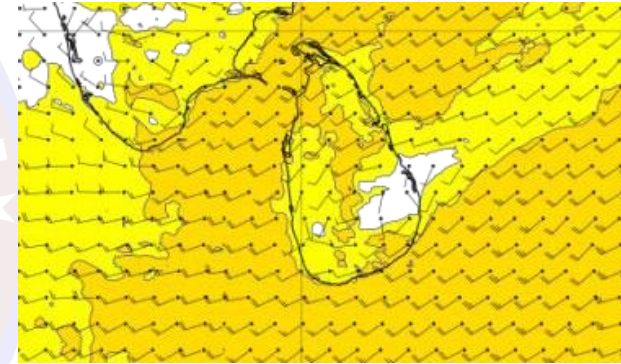
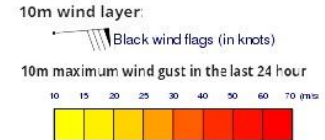
Wind and Rainfall Forecast (Total precipitation for 24 hrs)



Significant wave height (in meters)



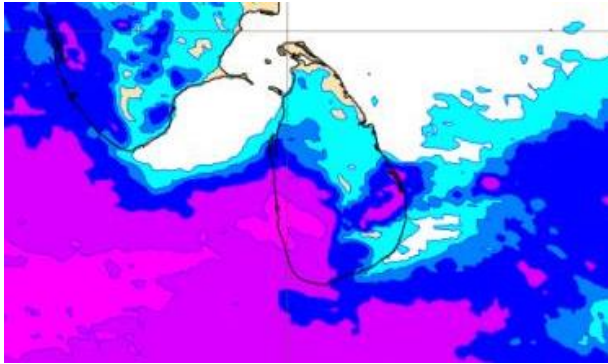
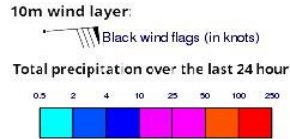
Wind Gust (m/s)



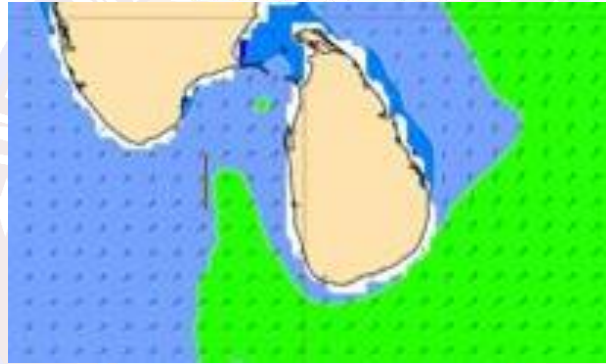
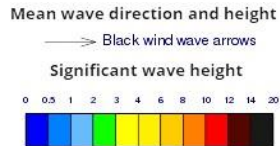
Showers or thundershowers will occur in the sea areas off the coast extending from Puttalam to Hambantota via Colombo and Galle.

Wind speed will be 30-40 kmph in the sea areas around the island. The sea area extending from Puttalam to Kankasanturai and Hambantota to Pottuvil can be rough at times as the wind speed may increase up to 55 kmph at times.

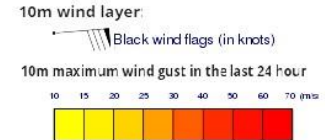
Wind and Rainfall Forecast (Total precipitation for 24 hrs)



Significant wave height (in meters)



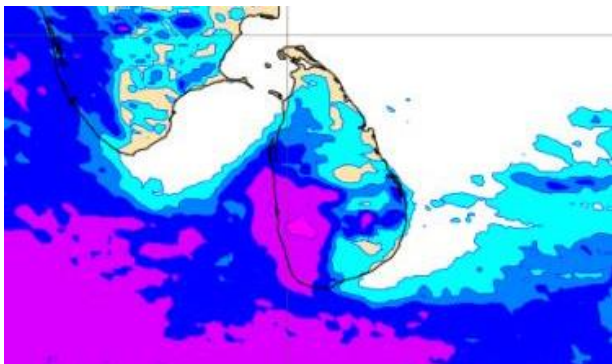
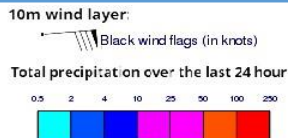
Wind Gust (m/s)



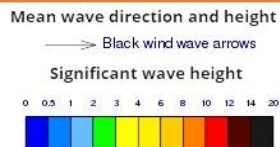
Showers or thundershowers will occur in the sea areas off the coast extending from Puttalam to Hambantota via Colombo and Galle.

Wind speed will be 30-40 kmph in the sea areas around the island. The sea area extending from Puttalam to Kankasanturai and Hambantota to Pottuvil can be rough at times as the wind speed may increase up to 50-60 kmph at times. Other sea areas may also be fairly rough as winds can increase up to 50kmph.

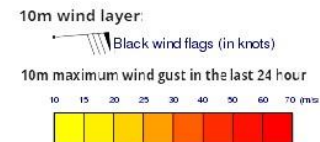
Wind and Rainfall Forecast (Total precipitation for 24 hrs)



Significant wave height (in meters)



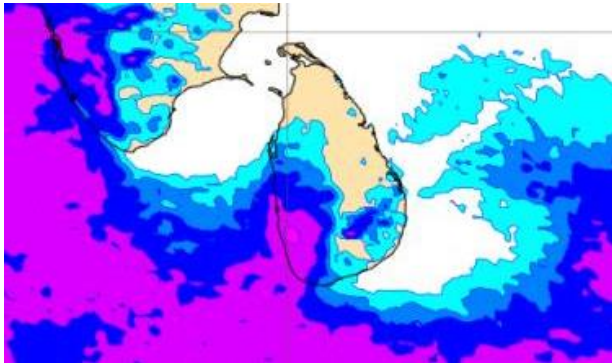
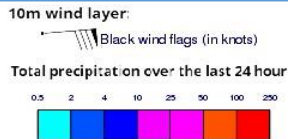
Wind Gust (m/s)



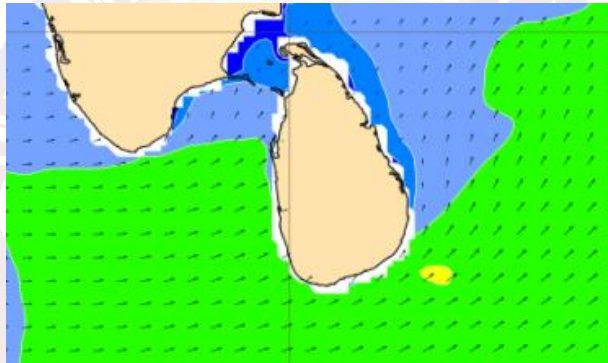
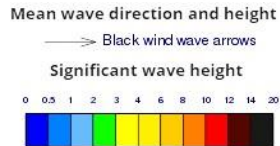
Showers or thundershowers will occur at several places in the sea area extending from Puttalam to Matara via Colombo and Galle.

Wind speed will be 30-40 kmph in the sea areas around the island. The sea area extending from Puttalam to Kankasanturai and Hambantota to Pottuvil can be rough at times as the wind speed may increase up to 50-60 kmph at times. Other sea areas may also be fairly rough as winds can increase up to 50kmph.

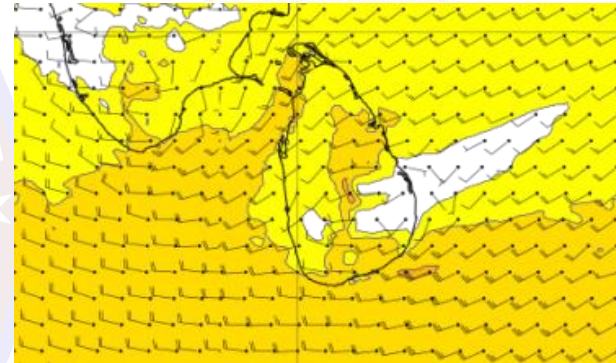
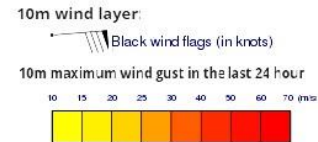
Wind and Rainfall Forecast (Total precipitation for 24 hrs)



Significant wave height (in meters)



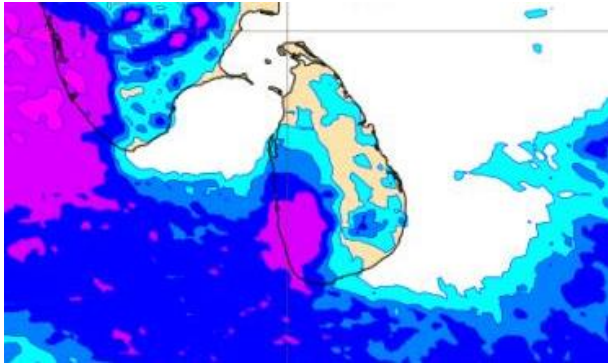
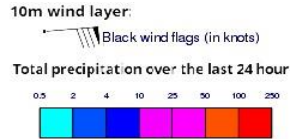
Wind Gust (m/s)



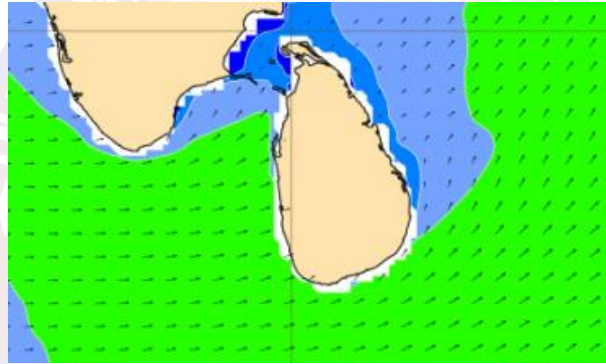
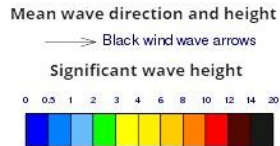
Showers or thundershowers will occur at several places in the sea area extending from Puttalam to Matara via Colombo and Galle.

Wind speed will be 30-40 kmph in the sea areas around the island. The sea area extending from Puttalam to Kankasanturai and Hambantota to Pottuvil can be rough at times as the wind speed may increase up to 50-60 kmph at times. Other sea areas may also be fairly rough as winds can increase up to 50kmph.

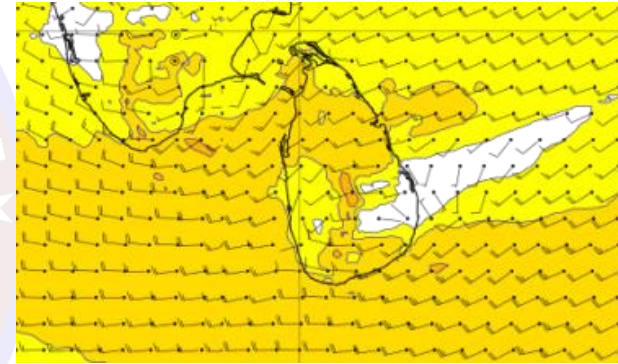
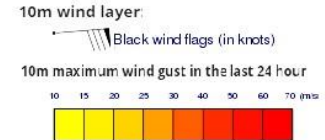
Wind and Rainfall Forecast (Total precipitation for 24 hrs)



Significant wave height (in meters)



Wind Gust (m/s)



Showers or thundershowers will occur at several places in the sea area extending from Puttalam to Matara via Colombo and Galle.

Wind speed will be 30-40 kmph in the sea areas around the island. The sea area extending from Puttalam to Kankasanturai and Hambantota to Pottuvil can be rough at times as the wind speed may increase up to 50-60 kmph at times. Other sea areas may also be fairly rough as winds can increase up to 50kmph.