



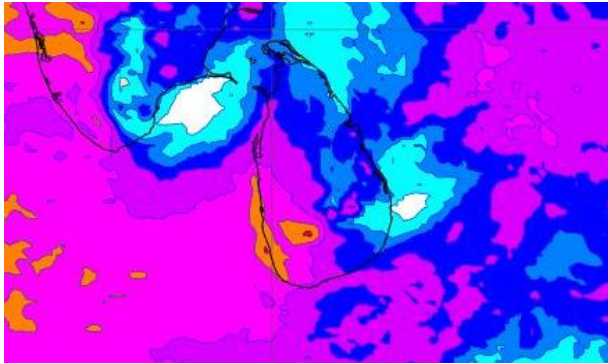
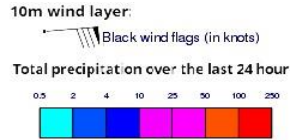
INFORMATION FUSION CENTRE COLOMBO

8 DAY FORECAST FOR COASTAL AREAS AROUND SRI LANKA

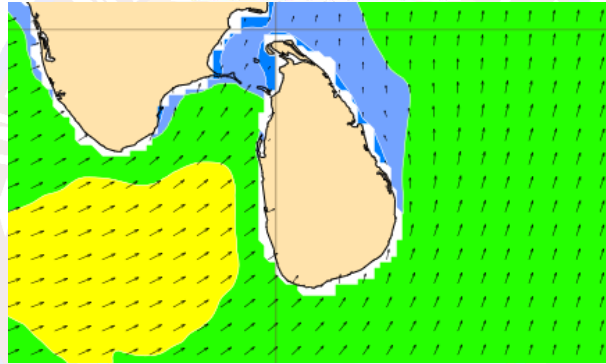
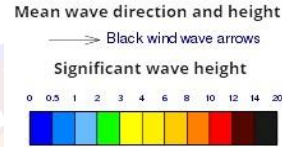
Issued at 10.00 p.m. on 16 May 2022 Marine Weather Division,
National Meteorological Centre, Department of Meteorology



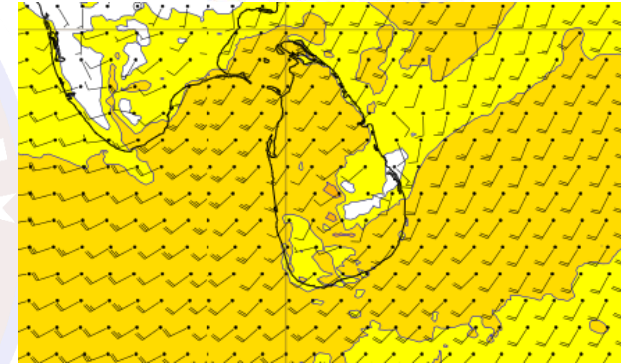
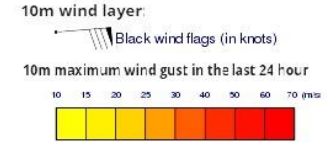
Wind and Rainfall Forecast (Total precipitation for 24 hrs)



Significant wave height (in meters)



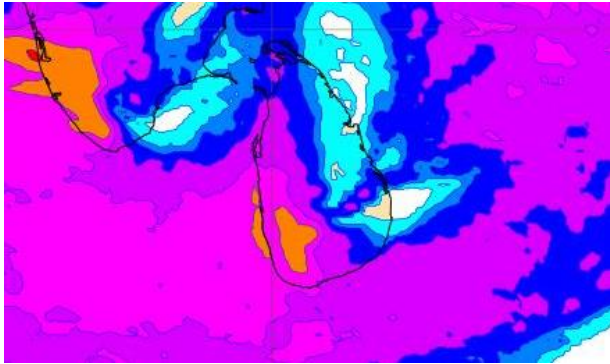
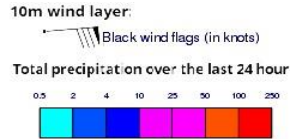
Wind Gust (m/s)



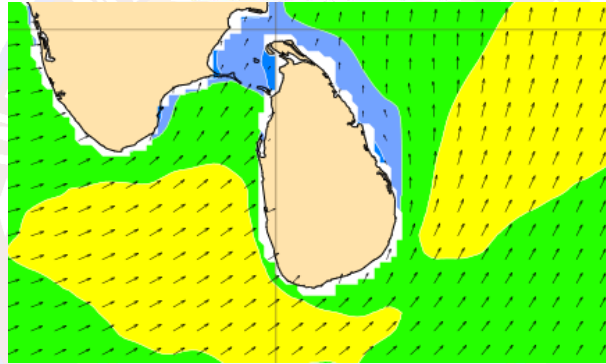
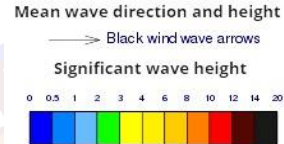
Showers or thundershowers will occur at times in the sea areas extending from Puttalam to Hambantota via Colombo and Galle. Heavy showers can be expected at some places in these sea areas. Thundershowers may occur at several places in the other sea areas particularly during the afternoon or evening.

Winds speed will be 35-45 kmph in the sea areas around the island. The sea areas from Kankasanthurai to Pottuvil via Mannar, Puttalam, Colombo, Galle and Hambantota may be very rough at times as wind speed can be 60-70 kmph at times. There is a possibility of swell waves, having 2.0-2.45m height (This is not for land area) and it is advised not to venture in fishing and naval activities in above sea area.

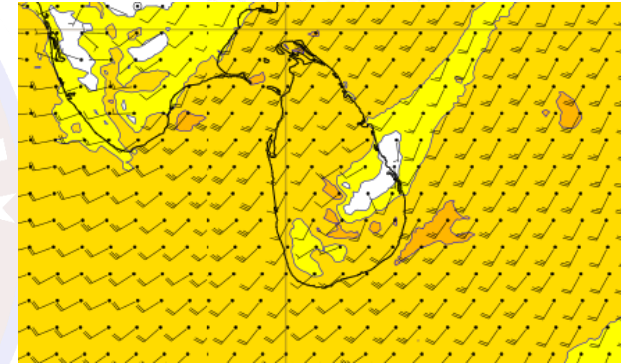
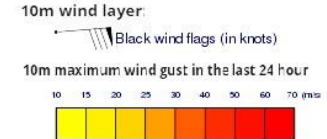
Wind and Rainfall Forecast (Total precipitation for 24 hrs)



Significant wave height (in meters)



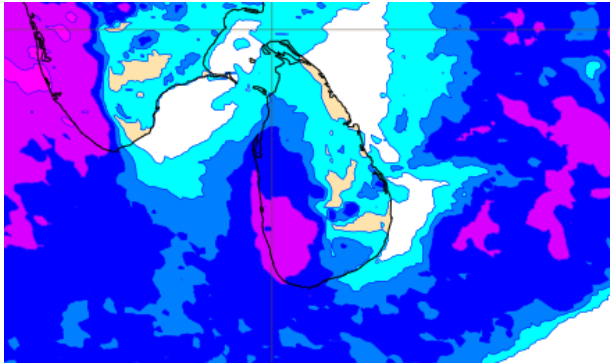
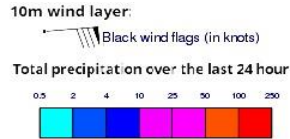
Wind Gust (m/s)



Showers or thundershowers will occur at times in the sea areas extending from Puttalam to Hambantota via Colombo and Galle. Heavy showers can be expected at some places in these sea areas. Thundershowers may occur at several places in the other sea areas particularly during the afternoon or evening.

Winds speed will be 35-45 kmph in the sea areas around the island. The sea areas from Kankasanthurai to Pottuvil via Mannar, Puttalam, Colombo, Galle and Hambantota may be very rough at times as wind speed can be 60-70 kmph at times. There is a possibility of swell waves, having 2.0-2.45m height (This is not for land area) and it is advised not to venture in fishing and naval activities in above sea area.

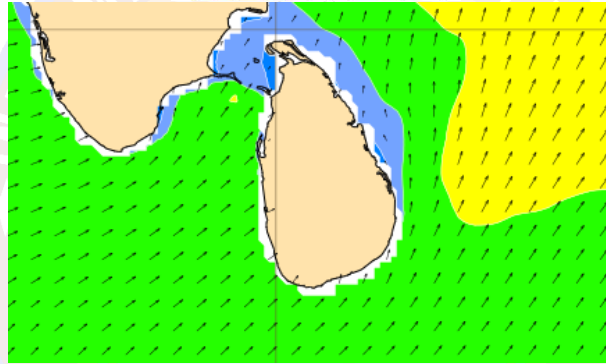
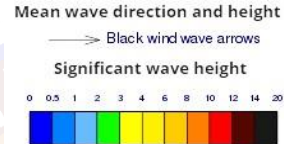
Wind and Rainfall Forecast (Total precipitation for 24 hrs)



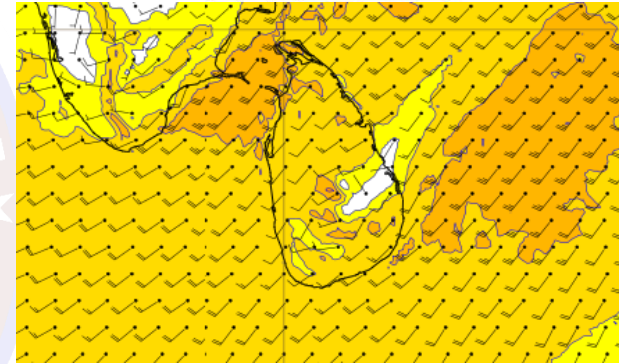
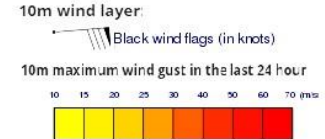
Showers or thundershowers will occur at several places in the sea area extending from Mannar to Hambantota via Puttalam, Colombo and Galle.

Winds speed will be 35-45 kmph in the sea areas around the island. The sea areas from Kankasanthurai to Pottuvil via Mannar, Puttalam, Colombo, Galle and Hambantota may be very rough at times as wind speed can be 60-70 kmph at times. There is a possibility of swell waves, having 2.0-2.45m height (This is not for land area) and it is advised not to venture in fishing and naval activities in above sea area.

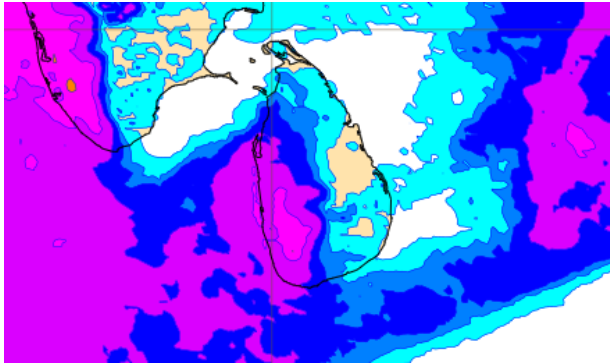
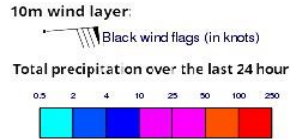
Significant wave height (in meters)



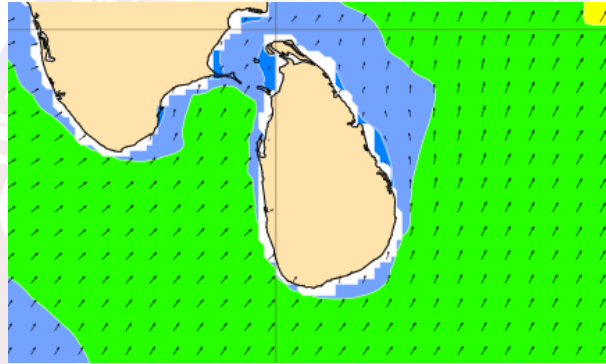
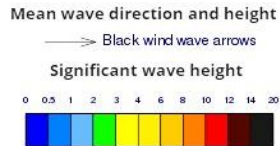
Wind Gust (m/s)



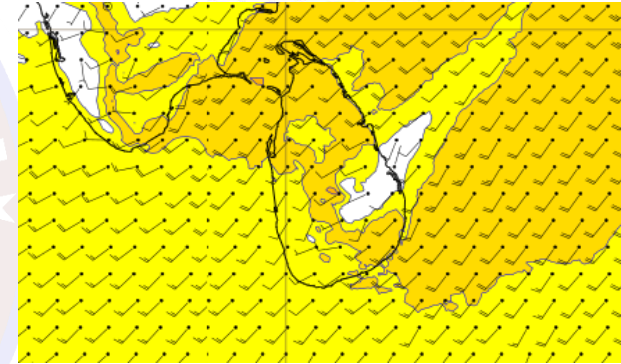
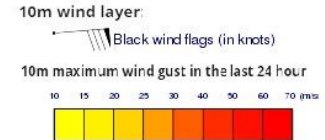
Wind and Rainfall Forecast (Total precipitation for 24 hrs)



Significant wave height (in meters)



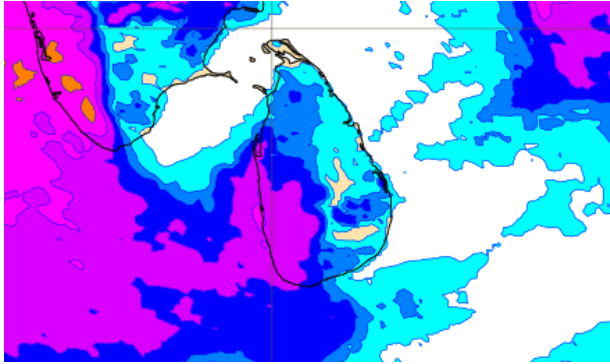
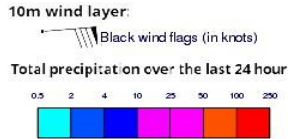
Wind Gust (m/s)



Showers will occur at several places in the sea areas extending from Puttalam to Hambantota via Colombo and Galle.

Wind speed will be 30-40 kmph in the sea areas around the island. The sea area extending from Kankasanthurai to Puttalam via Mannar and from Hambantota to Pottuvil can be rough at times as the wind speed may increase up to 50-60 kmph at times. Other sea areas may also be fairly rough as winds can increase up to 50kmph.

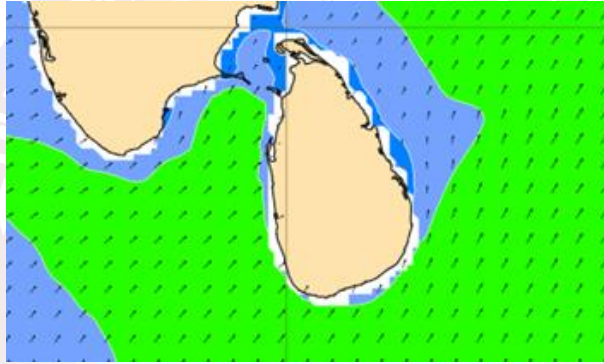
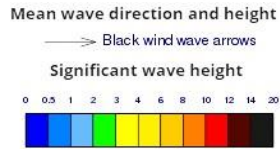
Wind and Rainfall Forecast (Total precipitation for 24 hrs)



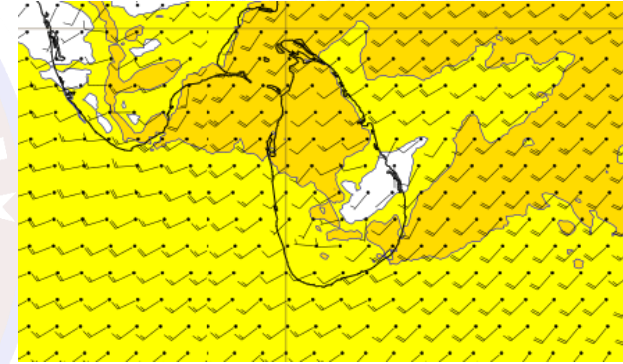
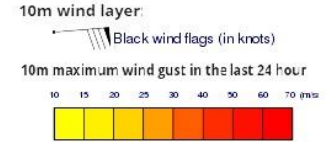
Showers will occur at several places in the sea areas extending from Puttalam to Hambantota via Colombo and Galle.

Wind speed will be 30-40 kmph in the sea areas around the island. The sea area extending from Kankasanthurai to Puttalam via Mannar and from Hambantota to Pottuvil can be rough at times as the wind speed may increase up to 50-60 kmph at times. Other sea areas may also be fairly rough as winds can increase up to 50kmph.

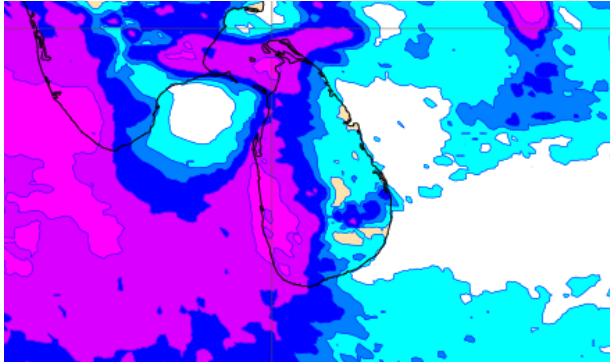
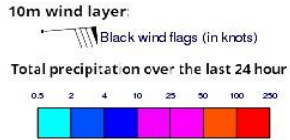
Significant wave height (in meters)



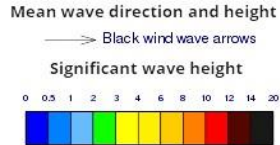
Wind Gust (m/s)



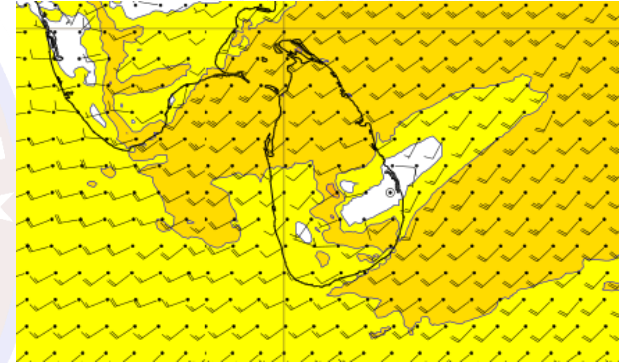
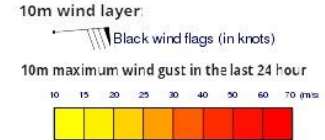
Wind and Rainfall Forecast (Total precipitation for 24 hrs)



Significant wave height (in meters)



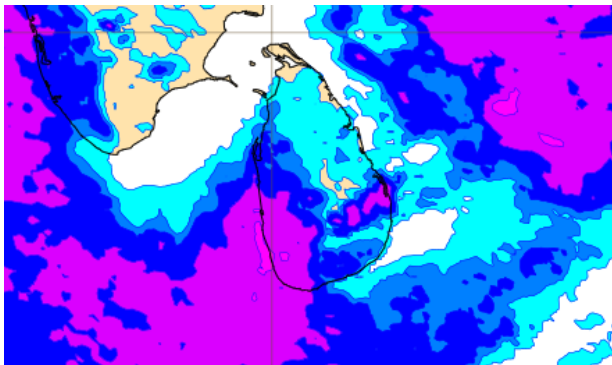
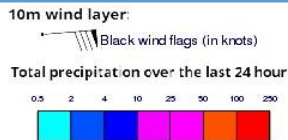
Wind Gust (m/s)



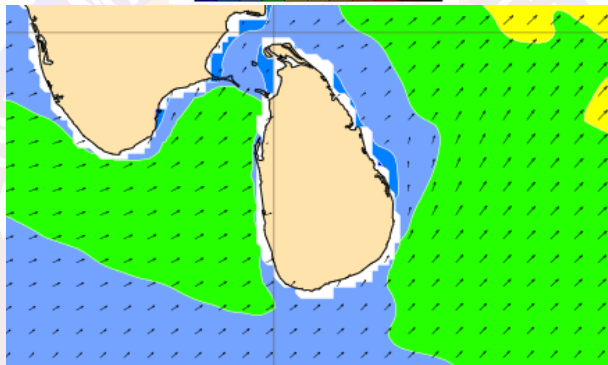
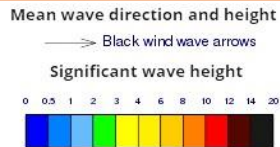
Showers or thundershowers will occur at several places in the sea area extending from Puttalam to Hambantota via Galle.

Wind speed will be 30-40 kmph in the sea areas around the island. The sea area extending from Trincomalee to Puttalam via Kankasanthurai & Mannar and from Hambantota to Pottuvil can be rough at times as the wind speed may increase up to 50-60 kmph at times. Other sea areas may also be fairly rough as winds can increase up to 50kmph.

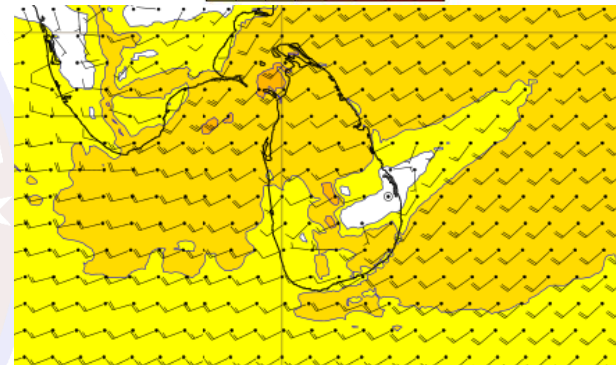
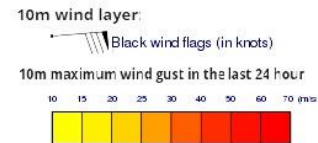
Wind and Rainfall Forecast (Total precipitation for 24 hrs)



Significant wave height (in meters)



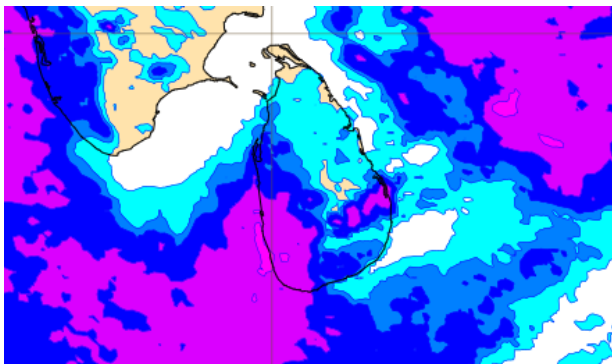
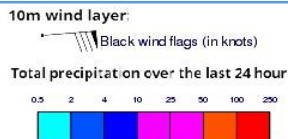
Wind Gust (m/s)



Showers or thundershowers will occur at several places in the sea area extending from Puttalam to Hambantota via Galle.

Wind speed will be 30-40 kmph in the sea areas around the island. The sea area extending from Trincomalee to Puttalam via Kankasanthurai & Mannar and from Hambantota to Pottuvil can be rough at times as the wind speed may increase up to 50-60 kmph at times. Other sea areas may also be fairly rough as winds can increase up to 50 kmph.

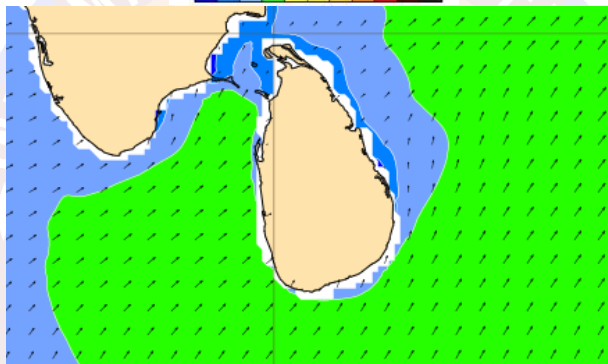
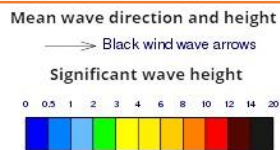
Wind and Rainfall Forecast (Total precipitation for 24 hrs)



Showers or thundershowers will occur at several places in the sea area extending from Puttalam to Hambantota via Galle.

Wind speed will be 30-40 kmph in the sea areas around the island. The sea area extending from Trincomalee to Puttalam via Kankasanthurai & Mannar and from Hambantota to Pottuvil can be rough at times as the wind speed may increase up to 50-60 kmph at times. Other sea areas may also be fairly rough as winds can increase up to 50kmph.

Significant wave height (in meters)



Wind Gust (m/s)

