



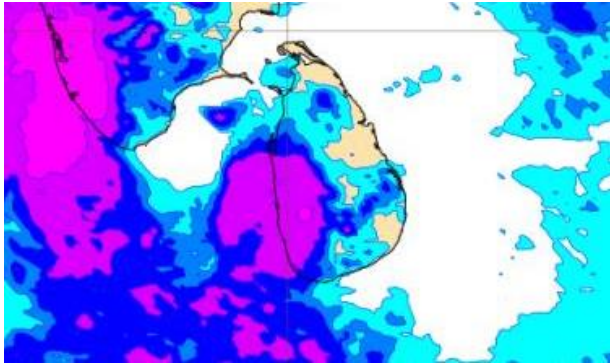
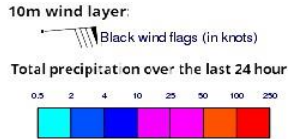
# **INFORMATION FUSION CENTRE COLOMBO**

**8 DAY FORECAST FOR COASTAL AREAS AROUND SRI LANKA**

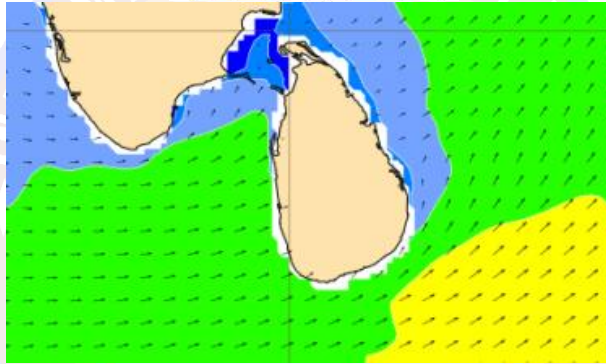
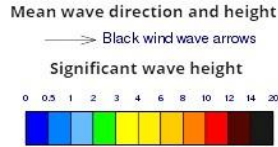
Issued at 10.00 p.m. on 09 May 2022 Marine Weather Division,  
National Meteorological Centre, Department of Meteorology



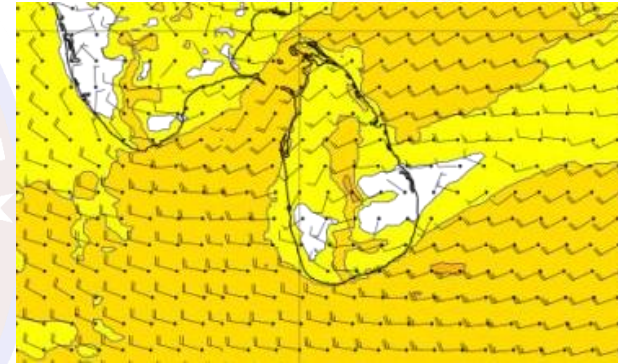
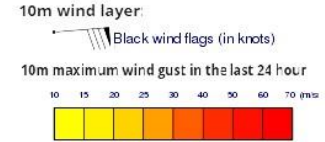
### Wind and Rainfall Forecast (Total precipitation for 24 hrs)



### Significant wave height (in meters)



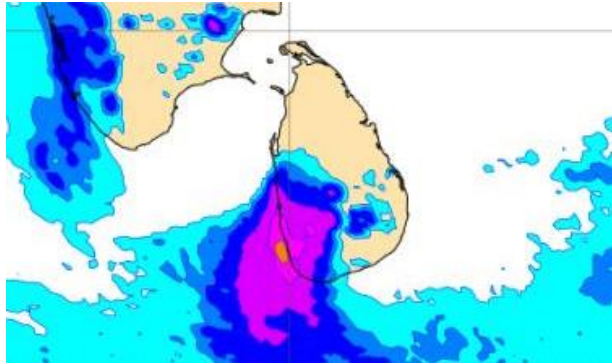
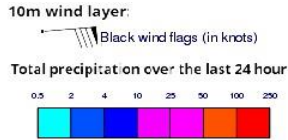
### Wind Gust (m/s)



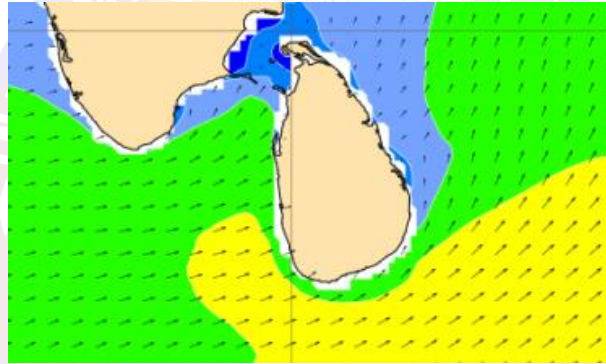
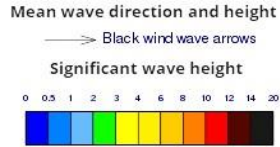
Showers will occur at times in the sea areas off the coast extending from Puttalam to Matara via Colombo and Galle

Wind speed will be 20 - 40 kmph in the sea areas around the island. The sea area extending from Puttalam to Hambantota via Colombo and Galle can be rough at times as the wind speed may increase up to 45-55 kmph at times.

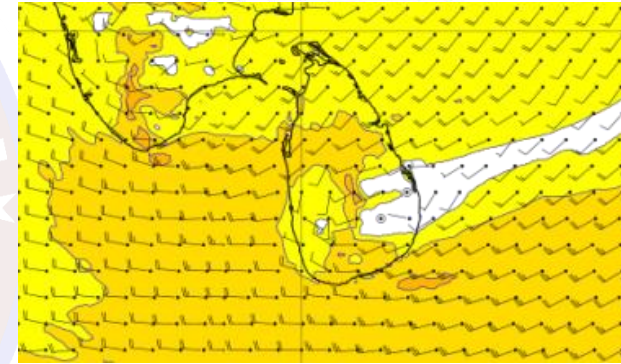
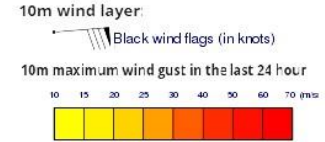
## Wind and Rainfall Forecast (Total precipitation for 24 hrs)



## Significant wave height (in meters)



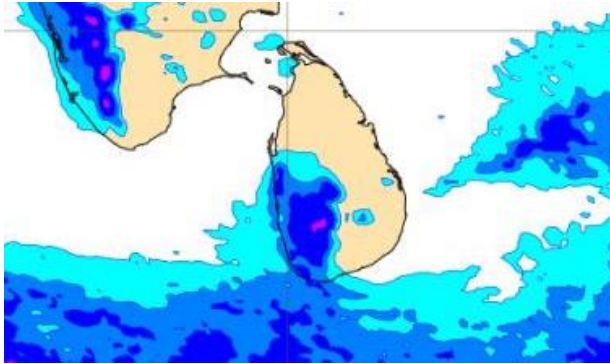
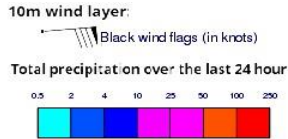
## Wind Gust (m/s)



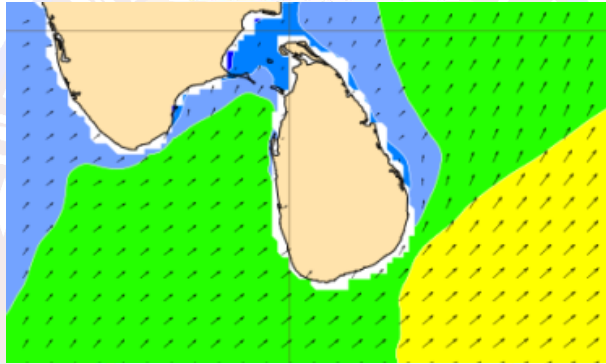
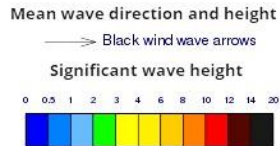
Showers or thundershowers will occur at times in the sea areas off the coast extending from Puttalam to Matara via Colombo and Galle.

Wind speed will be 20 - 40 kmph in the sea areas around the island. The sea area extending from Galle to Pottuvil via Hambantota can be rough at times as the wind speed may increase up to 50-60 kmph at times. Other sea areas around the island can be fairly rough at times as the wind speed may increase up to 50 kmph at times.

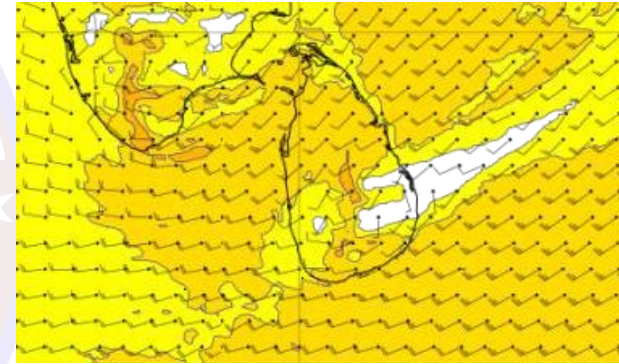
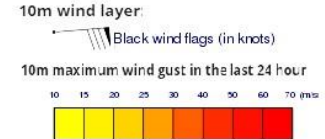
## Wind and Rainfall Forecast (Total precipitation for 24 hrs)



## Significant wave height (in meters)



## Wind Gust (m/s)

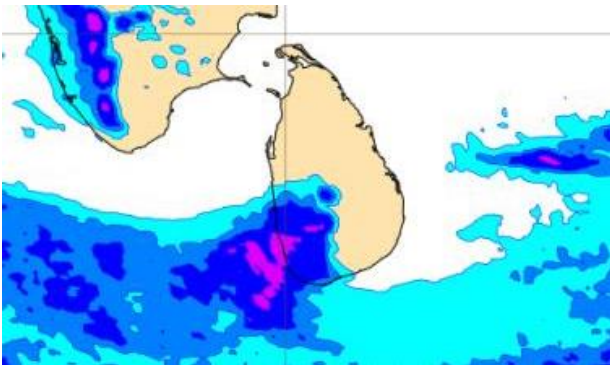
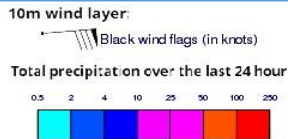


Showers or thundershowers will occur at several places in the sea areas off the coast extending from Colombo to Matara via Galle.

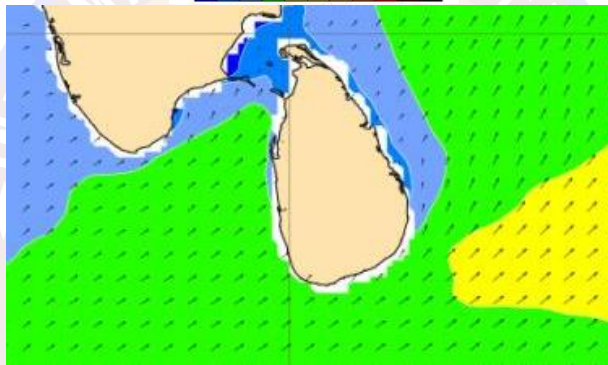
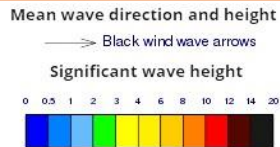
Wind speed will be 20 - 40 kmph in the sea areas around the island. Sea areas around the island can be rough at times as the wind speed may increase up to 50-60 kmph at times.



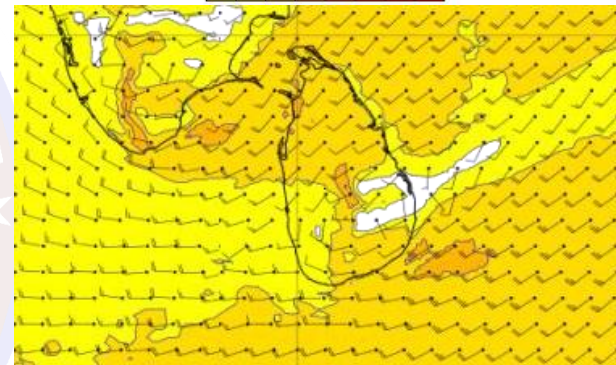
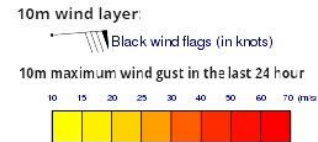
## Wind and Rainfall Forecast (Total precipitation for 24 hrs)



## Significant wave height (in meters)



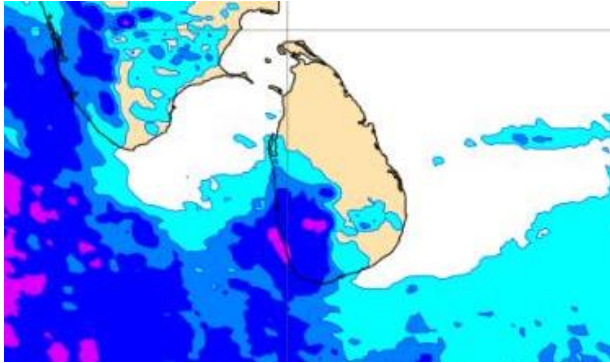
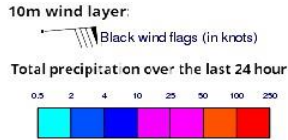
## Wind Gust (m/s)



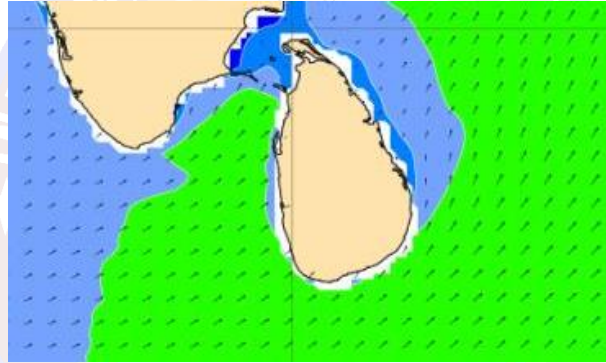
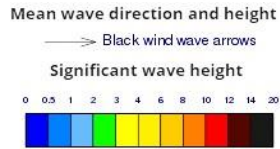
Showers or thundershowers will occur at several places in the sea areas off the coast extending from Colombo to Matara via Galle.

Wind speed will be 20 - 40 kmph in the sea areas around the island. Sea areas around the island can be rough at times as the wind speed may increase up to 50-60 kmph at times.

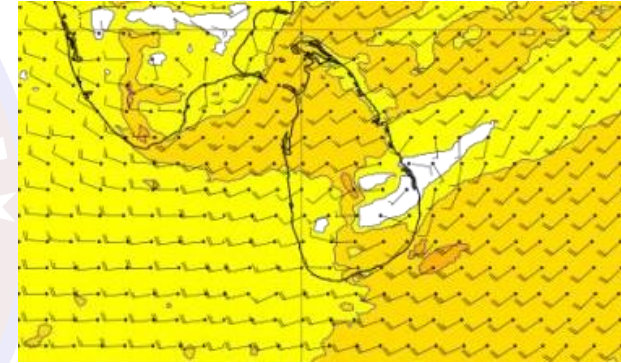
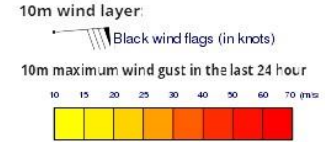
## Wind and Rainfall Forecast (Total precipitation for 24 hrs)



## Significant wave height (in meters)



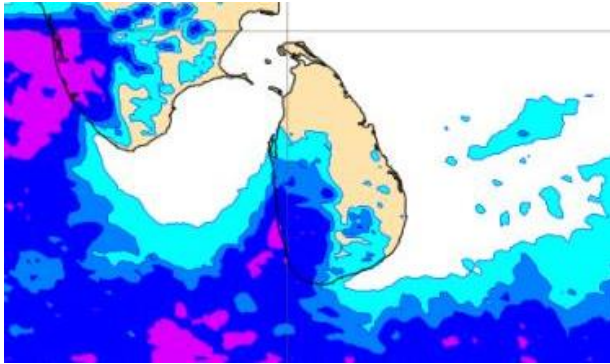
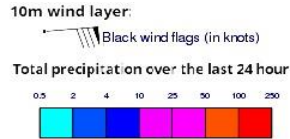
## Wind Gust (m/s)



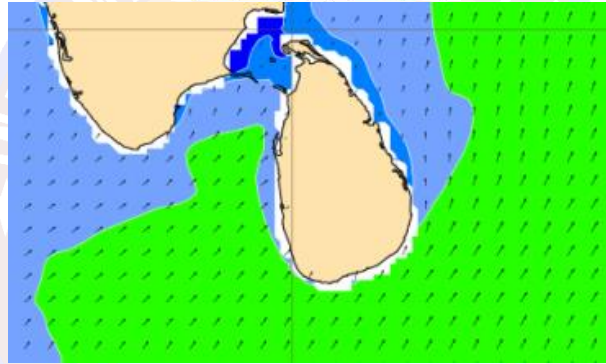
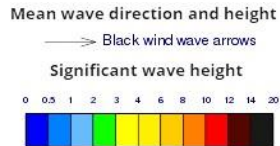
Showers or thundershowers will occur at several places in the sea areas off the coast extending from Puttalam to Matara via Colombo and Galle.

Wind speed will be 20 - 40 kmph in the sea areas around the island. Sea areas around the island can be rough at times as the wind speed may increase up to 50-60 kmph at times.

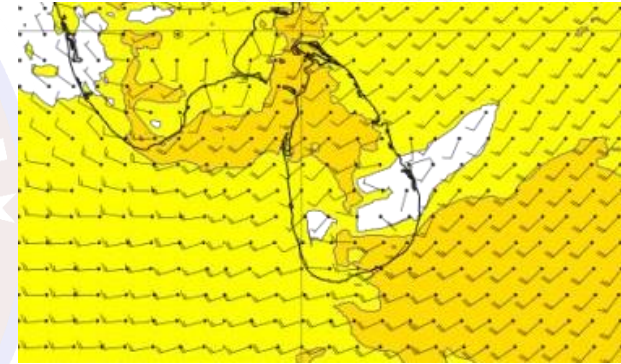
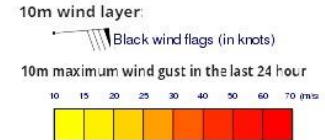
## Wind and Rainfall Forecast (Total precipitation for 24 hrs)



## Significant wave height (in meters)



## Wind Gust (m/s)

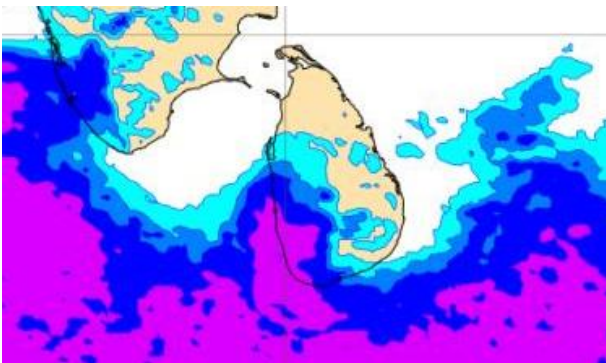
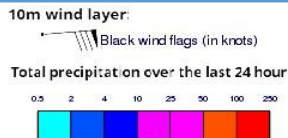


Showers or thundershowers will occur at several places in the sea areas off the coast extending from Puttalam to Matara via Colombo and Galle.

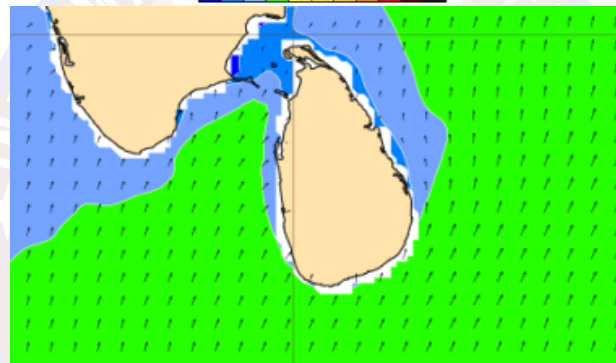
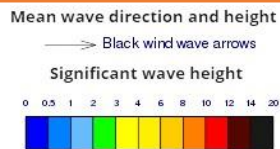
Wind speed will be 30 - 40 kmph in the sea areas around the island. The sea area extending from Galle to Pottuvil via Hambantota and from Puttalm to Trincomalee via Mannar and Kankasanthurai can be rough at times as the wind speed may increase up to 50-60 kmph at times. Other sea areas around the island can be fairly rough at times as the wind speed may increase up to 50 kmph at times.



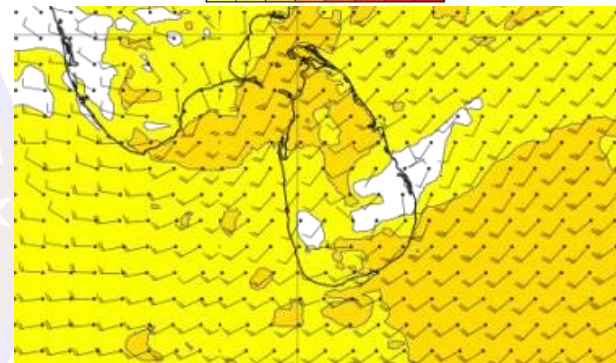
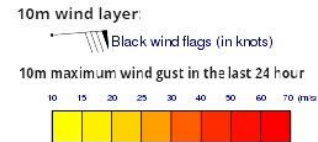
## Wind and Rainfall Forecast (Total precipitation for 24 hrs)



## Significant wave height (in meters)



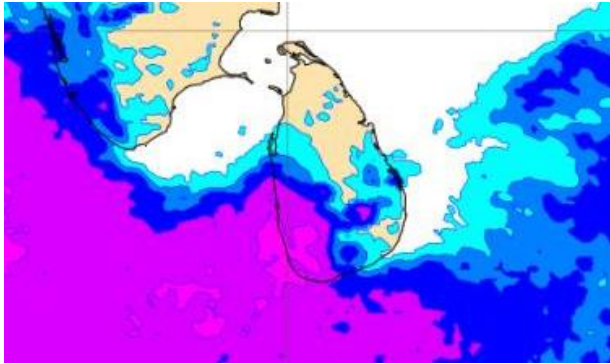
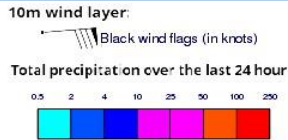
## Wind Gust (m/s)



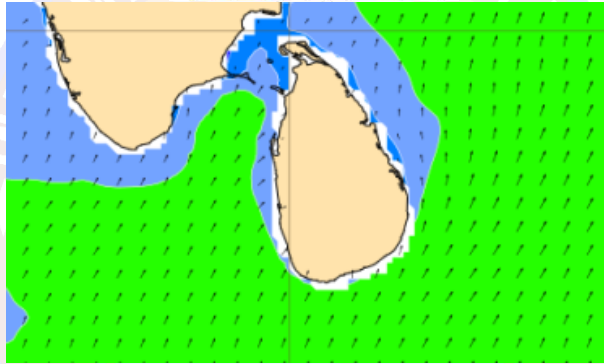
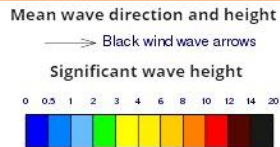
Showers or thundershowers will occur at times in the sea areas off the coast extending from Puttalam to Matara via Colombo and Galle.

Wind speed will be 30 - 40 kmph in the sea areas around the island. The sea area extending from Matara to Pottuvil via Hambantota and from Puttalm to Trincomalee via Mannar and Kankasanthurai can be rough at times as the wind speed may increase up to 50-60 kmph at times. Other sea areas around the island can be fairly rough at times as the wind speed may increase up to 50 kmph at times.

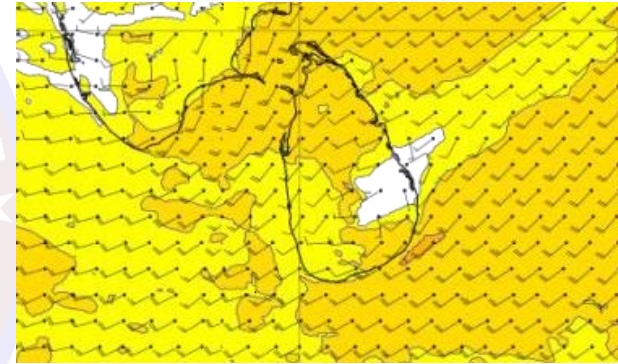
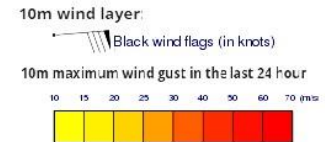
## Wind and Rainfall Forecast (Total precipitation for 24 hrs)



## Significant wave height (in meters)



## Wind Gust (m/s)



Showers or thundershowers will occur at times in the sea areas off the coast extending from Puttalam to Matara via Colombo and Galle.

Wind speed will be 30 - 40 kmph in the sea areas around the island. The sea area extending from Matara to Pottuvil via Hambantota and from Puttalm to Trincomalee via Mannar and Kankasanthurai can be rough at times as the wind speed may increase up to 50-60 kmph at times. Other sea areas around the island can be fairly rough at times as the wind speed may increase up to 50 kmph at times.