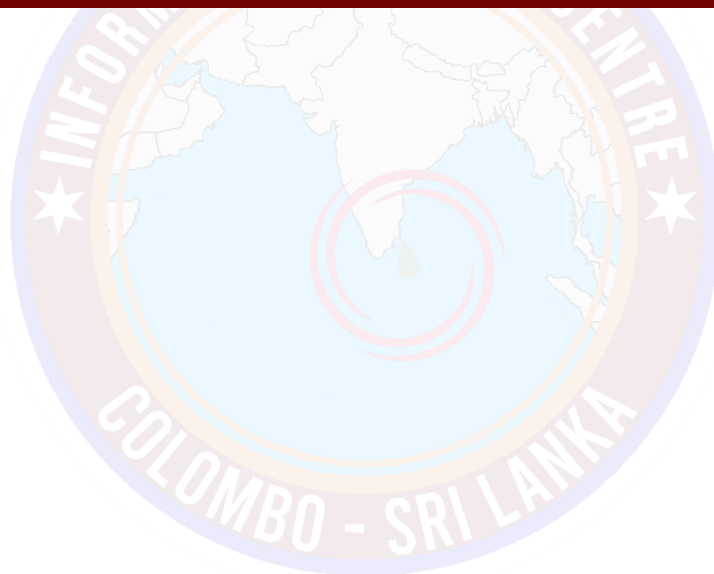




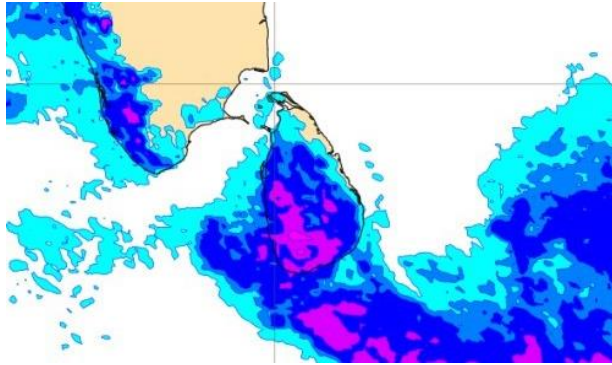
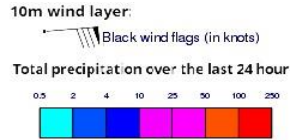
INFORMATION FUSION CENTRE COLOMBO

8 DAY FORECAST FOR COASTAL AREAS AROUND SRI LANKA

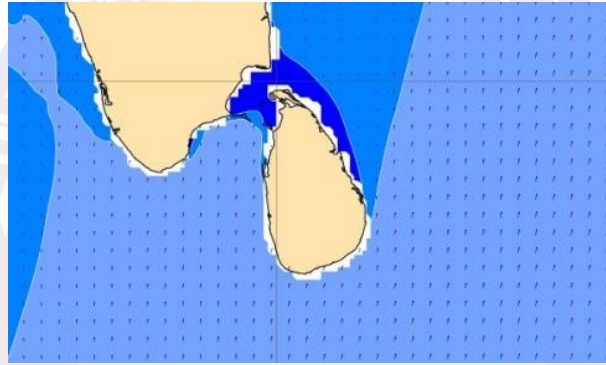
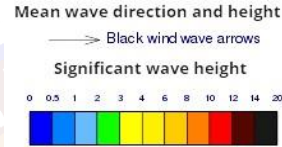
Issued at 10.00 p.m. on 25 April 2022 Marine Weather Division,
National Meteorological Centre, Department of Meteorology



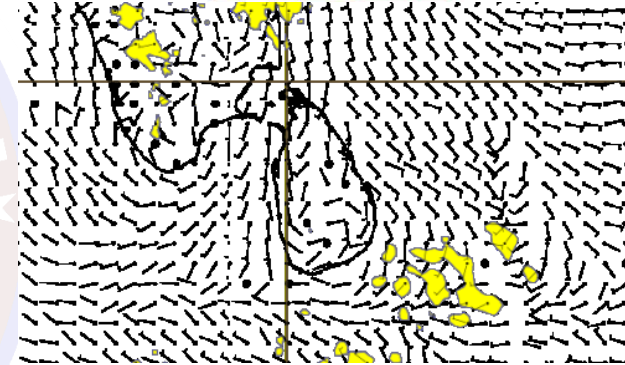
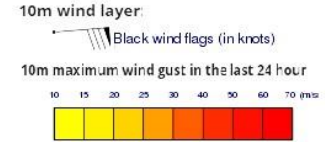
Wind and Rainfall Forecast (Total precipitation for 24 hrs)



Significant wave height (in meters)



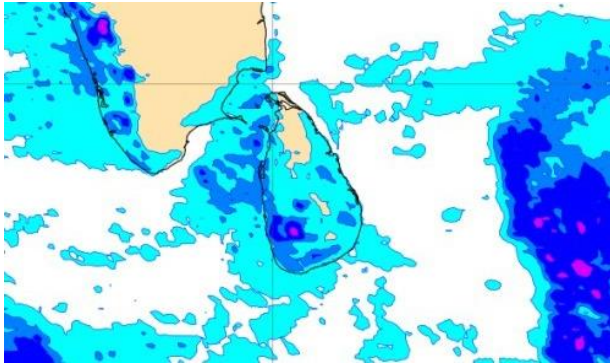
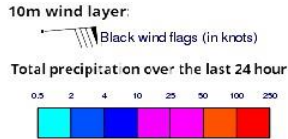
Wind Gust (m/s)



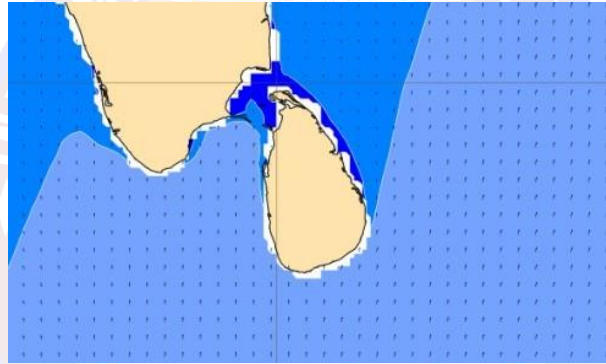
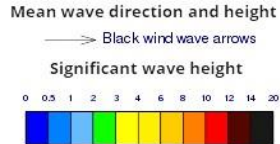
Showers or thundershowers may occur at several places in the sea areas off the coast extending from Puttalam to Hambantota via Colombo and Galle in the afternoon or night.

Wind speed will be 20 - 30 kmph in the sea areas around the island.

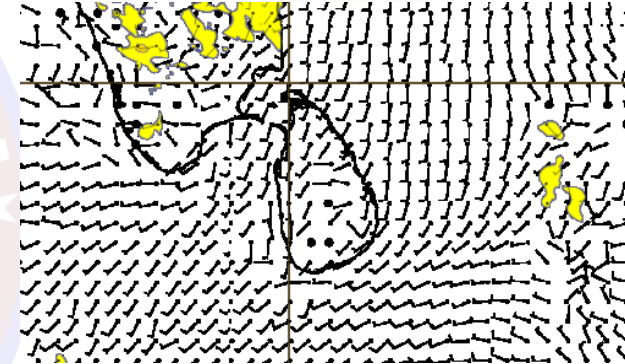
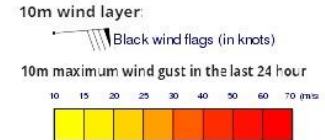
Wind and Rainfall Forecast (Total precipitation for 24 hrs)



Significant wave height (in meters)



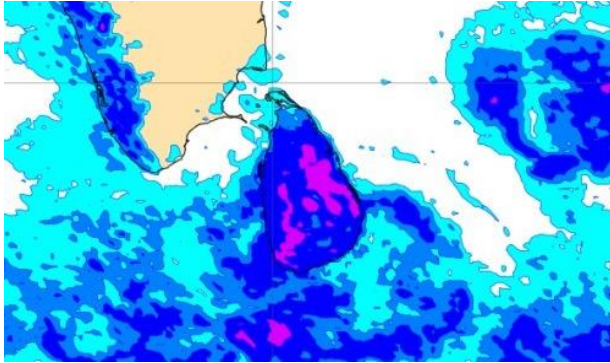
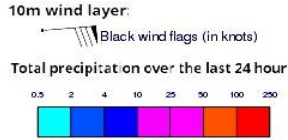
Wind Gust (m/s)



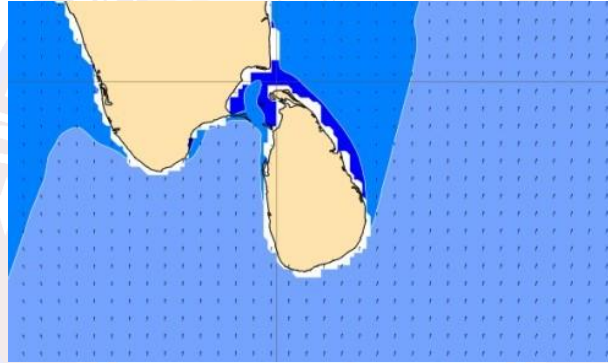
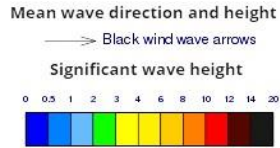
Showers or thundershowers may occur at a few places in the sea areas off the coast extending from Colombo to Hambantota via Galle in the afternoon or night.

Wind speed will be 20 - 30 kmph in the sea areas around the island.

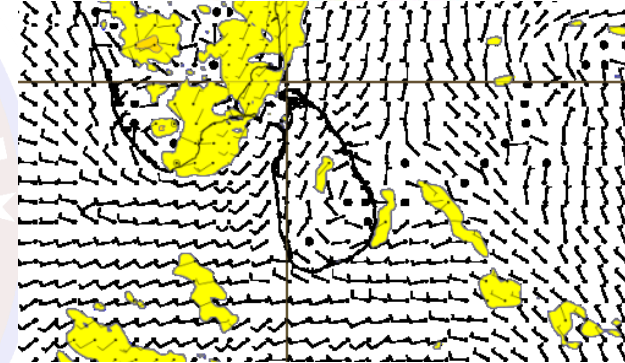
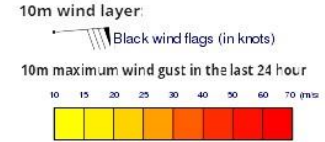
Wind and Rainfall Forecast (Total precipitation for 24 hrs)



Significant wave height (in meters)



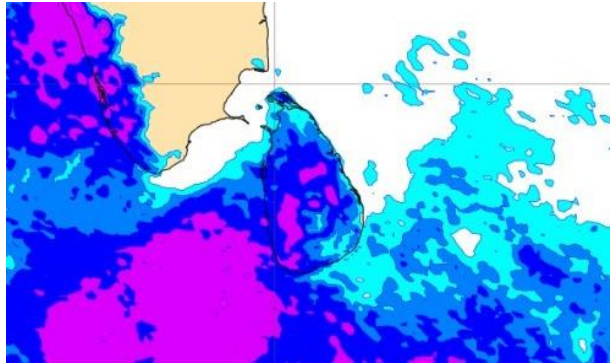
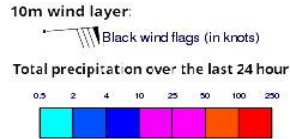
Wind Gust (m/s)



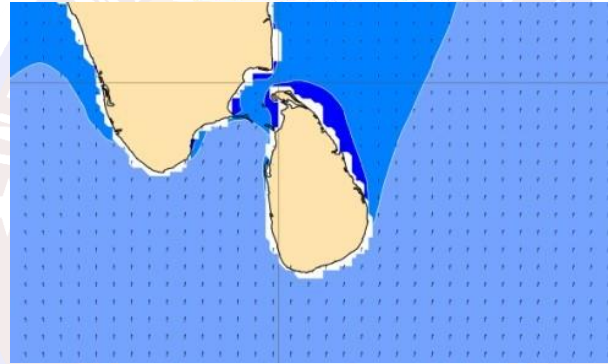
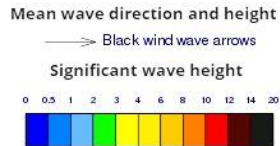
Showers or thundershowers may occur at several places in the sea areas off the coast extending from Puttalam to Hambantota via Colombo and Galle in the afternoon or night.

Wind speed will be 20 - 30 kmph in the sea areas around the island.

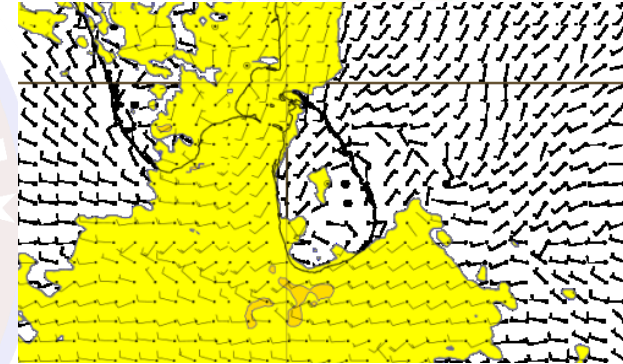
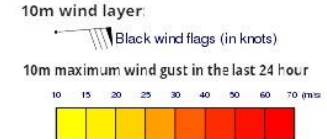
Wind and Rainfall Forecast (Total precipitation for 24 hrs)



Significant wave height (in meters)



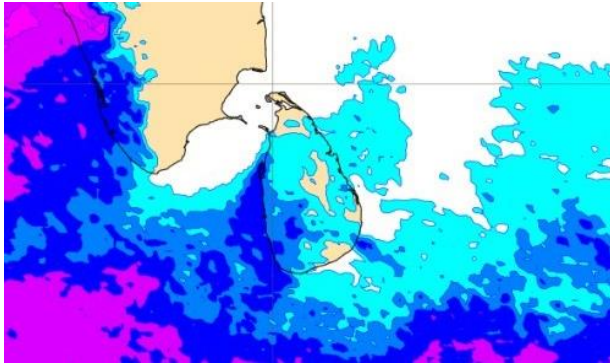
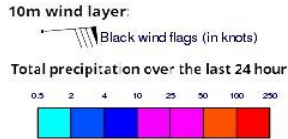
Wind Gust (m/s)



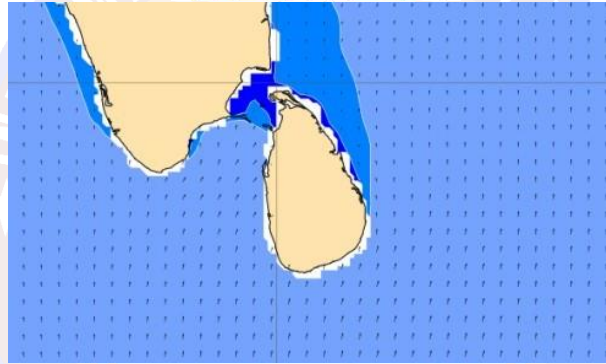
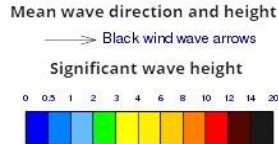
Showers or thundershowers may occur at several places in the sea areas off the coast extending from Puttalam to Galle via Colombo in the afternoon or night.

Wind speed will be 25 - 35 kmph in the sea areas around the island. The sea area extending from Galle to Pottuvil via Hambantota can be fairly rough at times as the wind speed may increase up to 45 kmph at times.

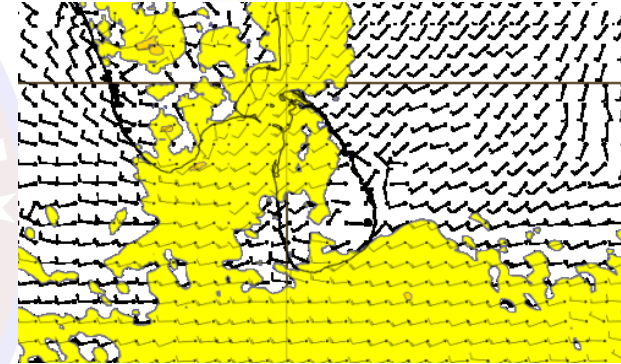
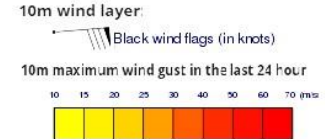
Wind and Rainfall Forecast (Total precipitation for 24 hrs)



Significant wave height (in meters)



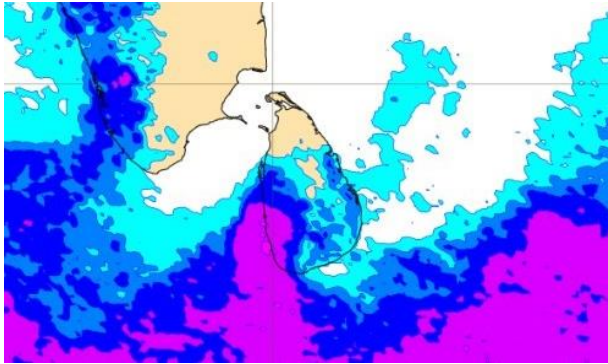
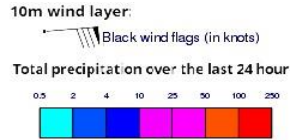
Wind Gust (m/s)



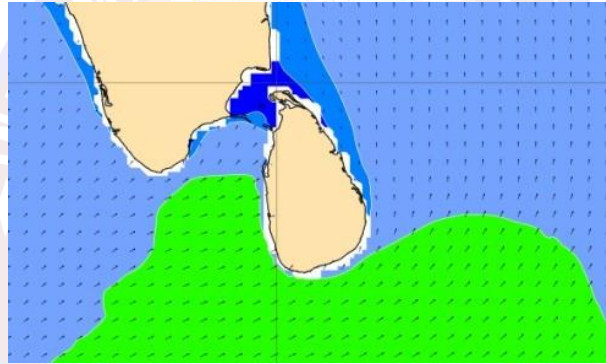
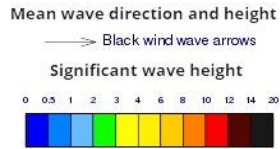
Showers may occur at several places in the sea areas off the coast extending from Puttalam to Galle via Colombo.

Wind speed will be 25 - 35 kmph in the sea areas around the island. The sea area extending from Galle to Pottuvil via Hambantota can be fairly rough at times as the wind speed may increase up to 45 kmph at times.

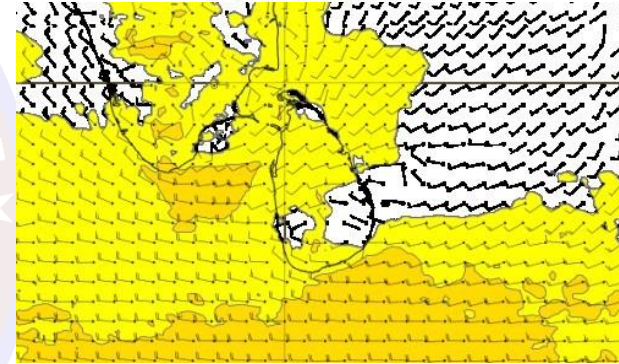
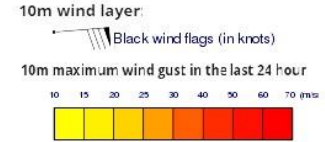
Wind and Rainfall Forecast (Total precipitation for 24 hrs)



Significant wave height (in meters)



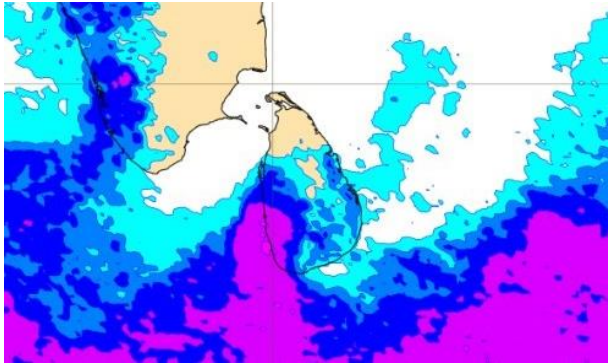
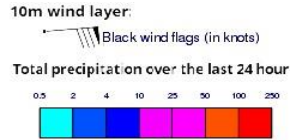
Wind Gust (m/s)



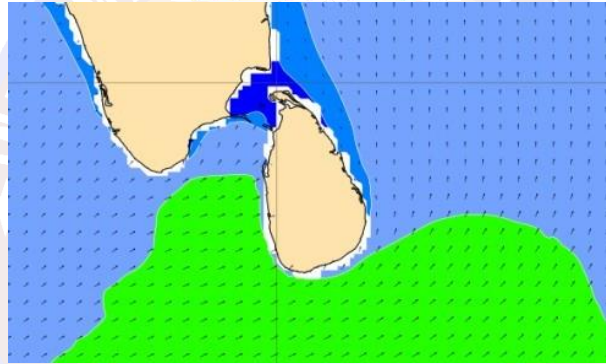
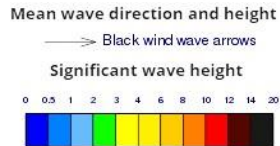
Showers may occur at several places in the sea areas off the coast extending from Puttalam to Galle via Colombo.

Wind speed will be 25 - 35 kmph in the sea areas around the island. The sea area extending from Galle to Pottuvil via Hambantota can be fairly rough at times as the wind speed may increase up to 45 kmph at times.

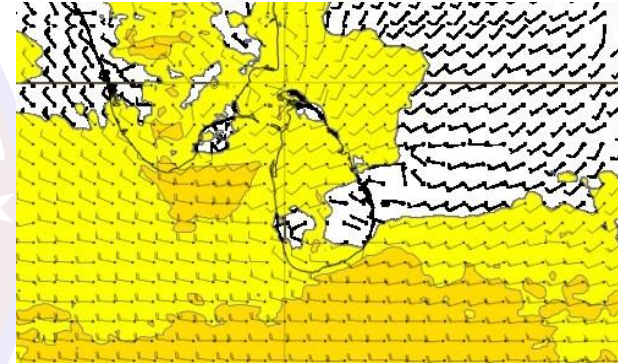
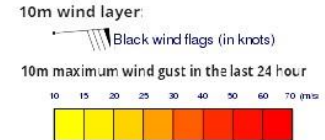
Wind and Rainfall Forecast (Total precipitation for 24 hrs)



Significant wave height (in meters)



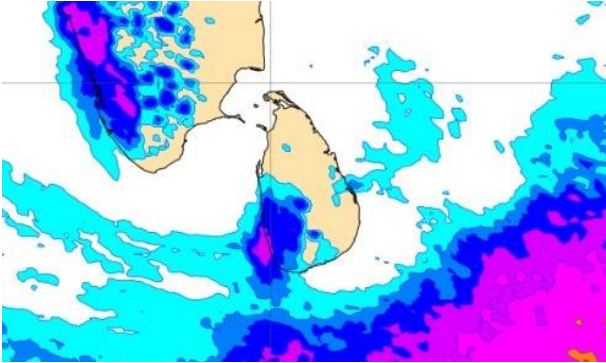
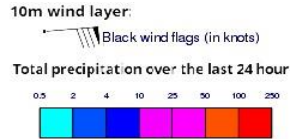
Wind Gust (m/s)



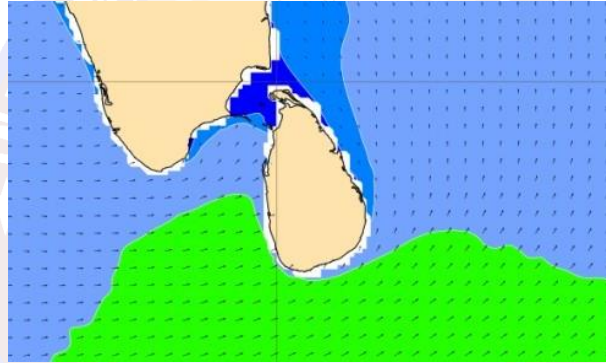
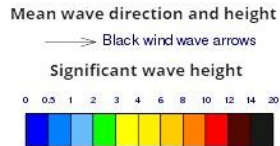
Showers may occur at several places in the sea areas off the coast extending from Puttalam to Galle via Colombo.

Wind speed will be 25 - 35 kmph in the sea areas around the island. The sea area extending from Galle to Pottuvil via Hambantota can be fairly rough at times as the wind speed may increase up to 45 kmph at times.

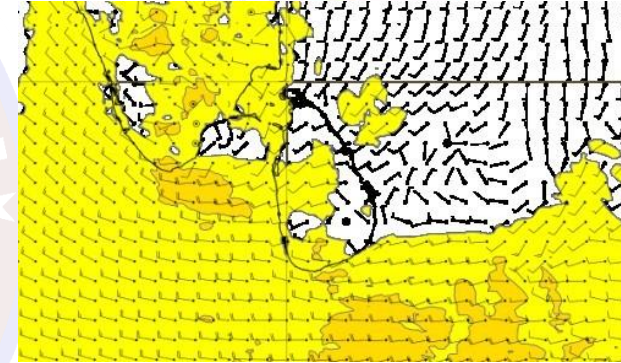
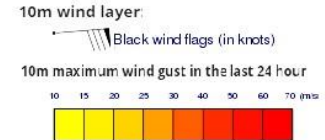
Wind and Rainfall Forecast (Total precipitation for 24 hrs)



Significant wave height (in meters)



Wind Gust (m/s)



Showers may occur at several places in the sea areas off the coast extending from Puttalam to Galle via Colombo.

Wind speed will be 25 - 35 kmph in the sea areas around the island. The sea area extending from Galle to Pottuvil via Hambantota can be fairly rough at times as the wind speed may increase up to 45 kmph at times.