



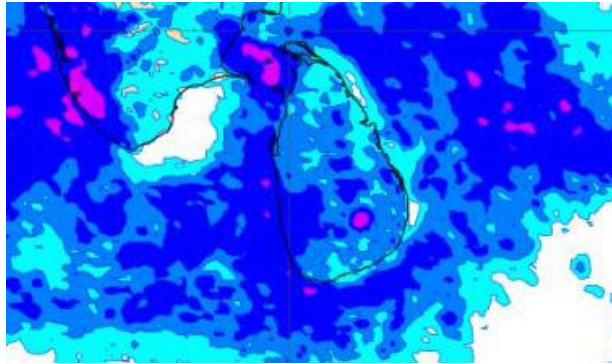
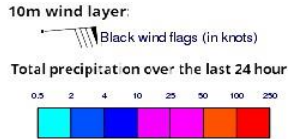
# **INFORMATION FUSION CENTRE COLOMBO**

**8 DAY FORECAST FOR COASTAL AREAS AROUND SRI LANKA**

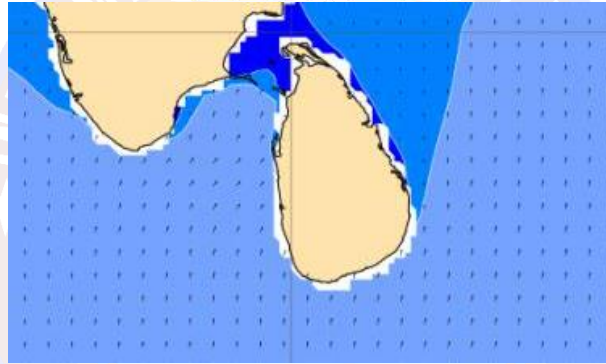
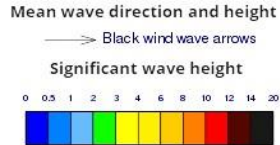
Issued at 10.00 p.m. on 17 April 2022  
Marine Weather Division, National Meteorological Centre, Department of  
Meteorology



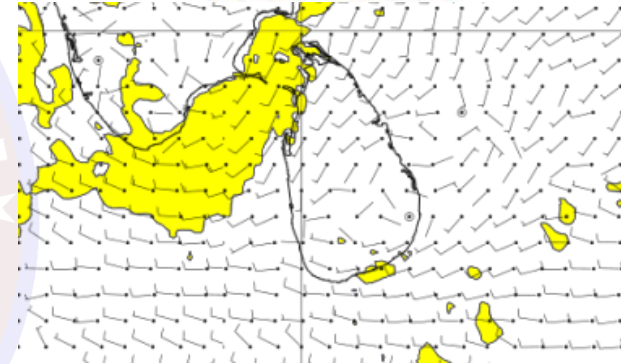
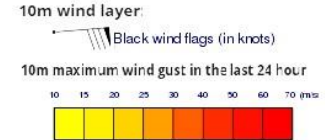
## Wind and Rainfall Forecast (Total precipitation for 24 hrs)



## Significant wave height (in meters)



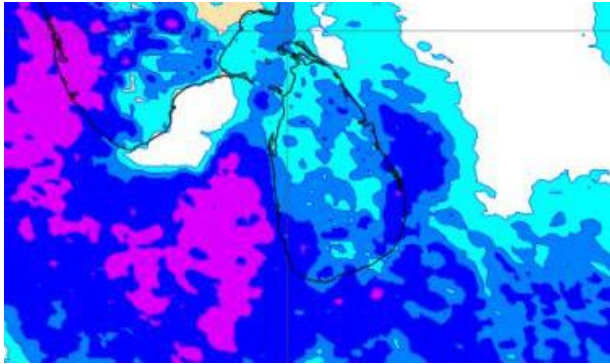
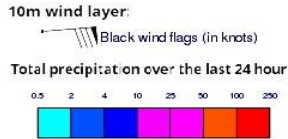
## Wind Gust (m/s)



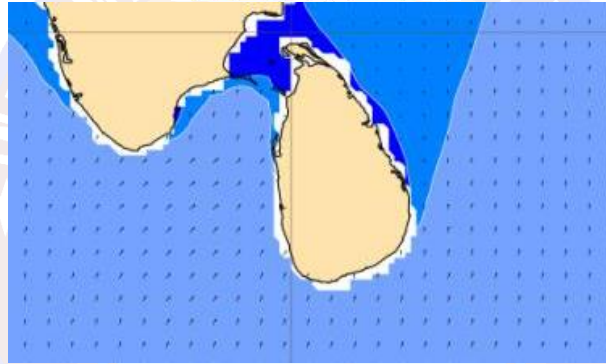
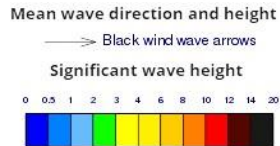
Showers or thundershowers may occur at a few places in the sea areas off the coast extending from Puttalam to Pottuvil via Mannar, Kankasanturai and Trincomalee.

Wind speed will be 20 - 30 kmph in the sea areas around the island. The sea area extending from Kankasanturai to Puttalam via Mannar can be fairly rough as winds can increase up to 40 kmph

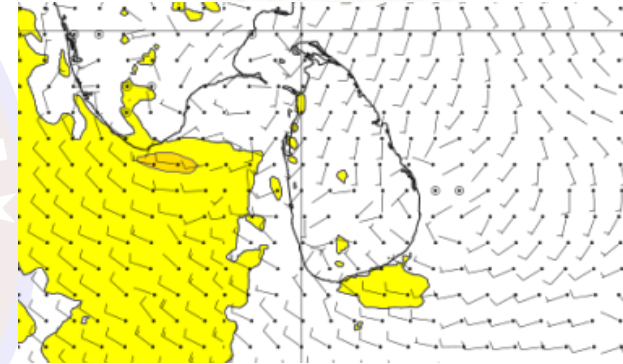
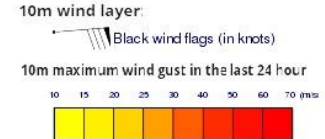
## Wind and Rainfall Forecast (Total precipitation for 24 hrs)



## Significant wave height (in meters)



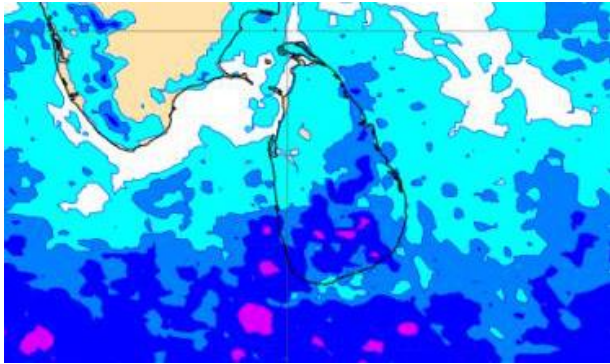
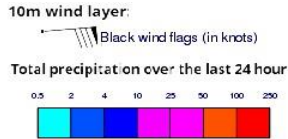
## Wind Gust (m/s)



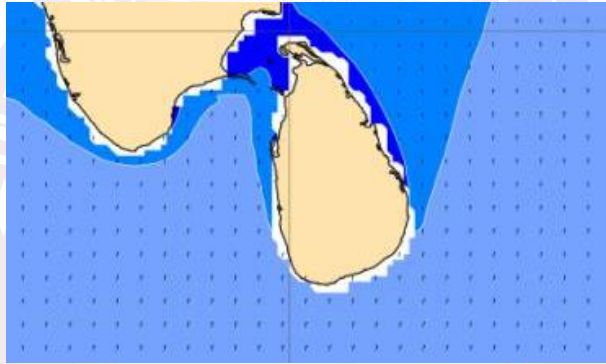
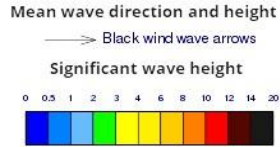
Showers or thundershowers may occur at several places in the sea areas around the island.

Wind speed will be 20 - 30 kmph in the sea areas around the island. The sea area extending from Kankasanturai to Puttalam via Mannar can be fairly rough as winds can increase up to 40 kmph.

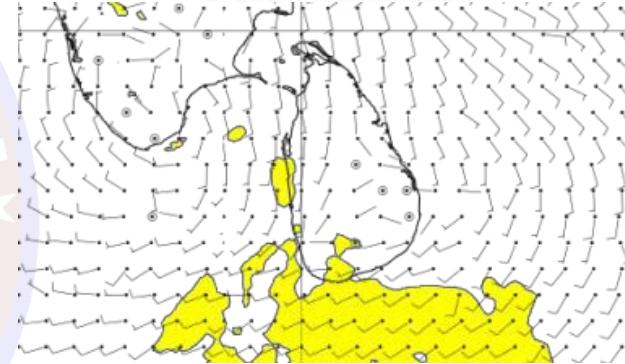
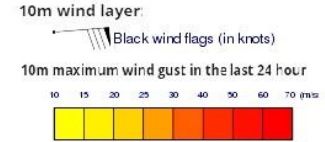
## Wind and Rainfall Forecast (Total precipitation for 24 hrs)



## Significant wave height (in meters)



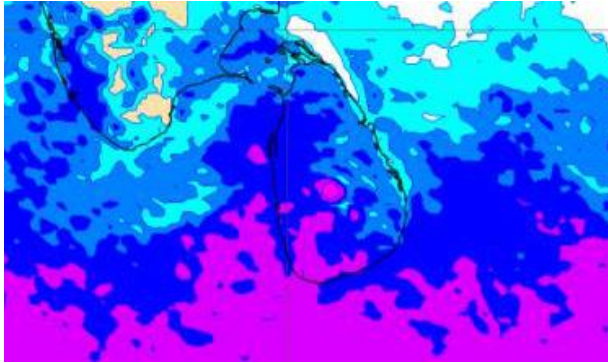
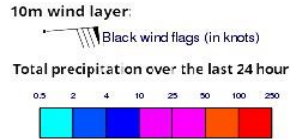
## Wind Gust (m/s)



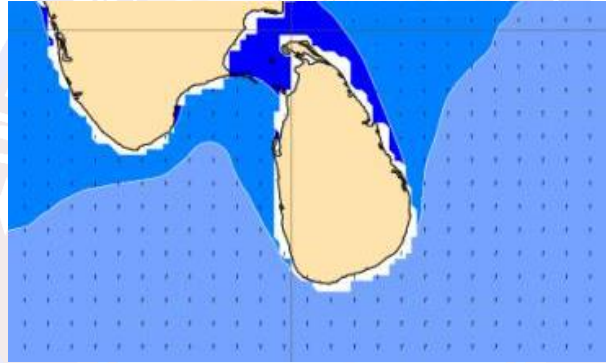
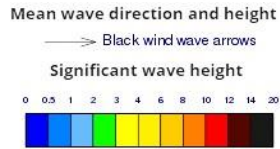
Showers or thundershowers may occur at a few places in the sea areas around the island.

Wind speed will be 20 - 30 kmph in the sea areas around the island. The sea area extending from Kankasanturai to Puttalam via Mannar can be fairly rough as winds can increase up to 40 kmph.

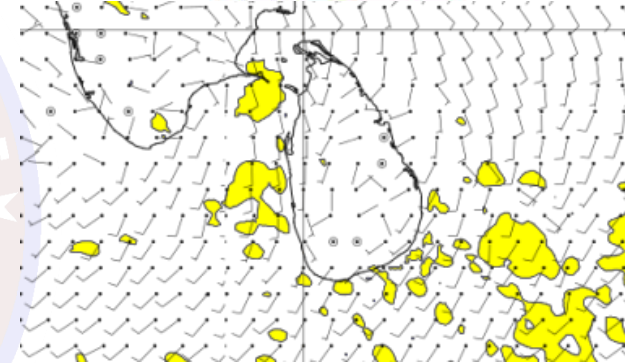
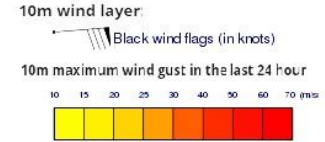
## Wind and Rainfall Forecast (Total precipitation for 24 hrs)



## Significant wave height (in meters)



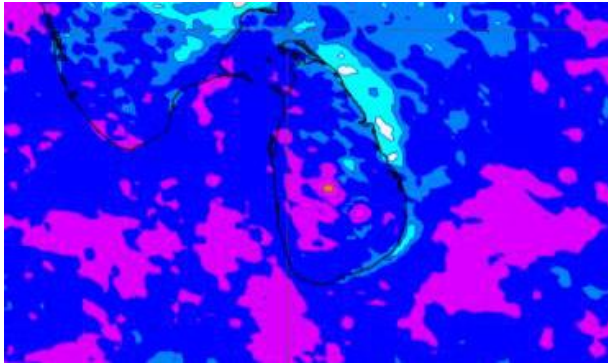
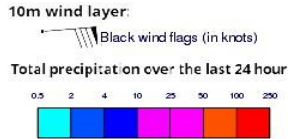
## Wind Gust (m/s)



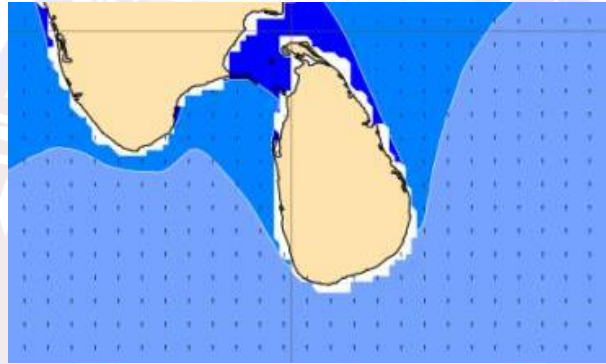
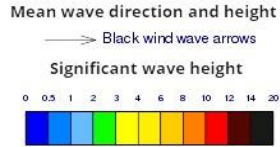
Showers or thundershowers may occur at a few places in the sea areas off the coast extending from Colombo to Hambantota via Galle.

Wind speed will be 20 - 30 kmph in the sea areas around the island.

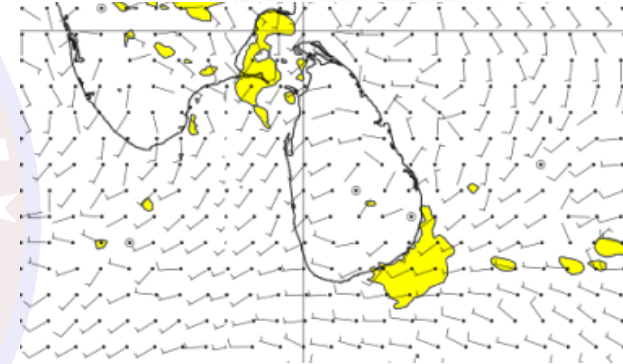
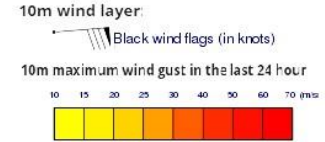
## Wind and Rainfall Forecast (Total precipitation for 24 hrs)



## Significant wave height (in meters)



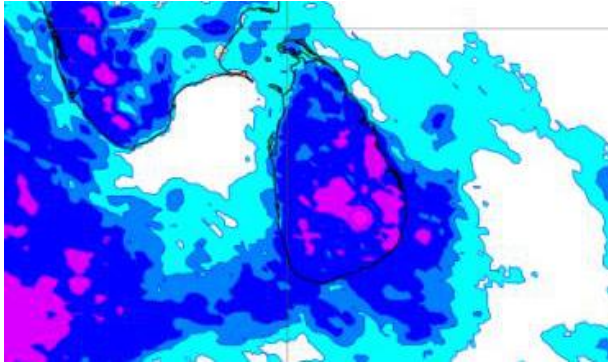
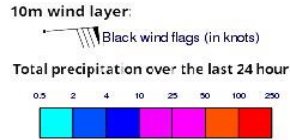
## Wind Gust (m/s)



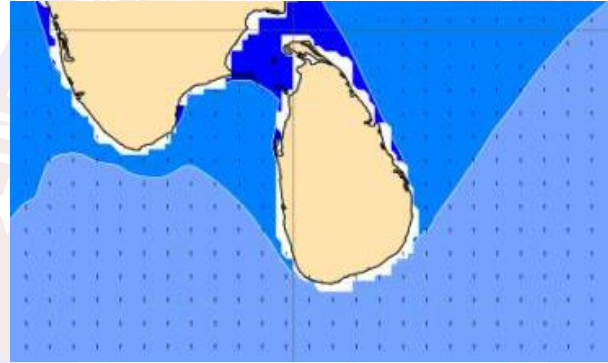
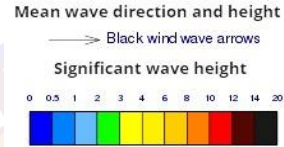
Showers or thundershowers may occur at several places in the sea areas off the coast extending from Colombo to Hambantota via Galle. Showers or thundershowers may occur at a few places in the other sea areas around the island too.

Wind speed will be 20 - 30 kmph in the sea areas around the island

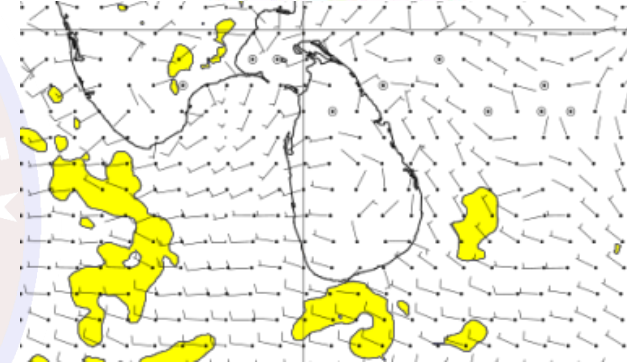
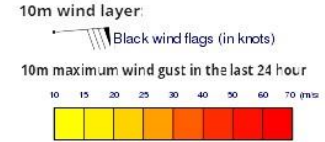
## Wind and Rainfall Forecast (Total precipitation for 24 hrs)



## Significant wave height (in meters)



## Wind Gust (m/s)

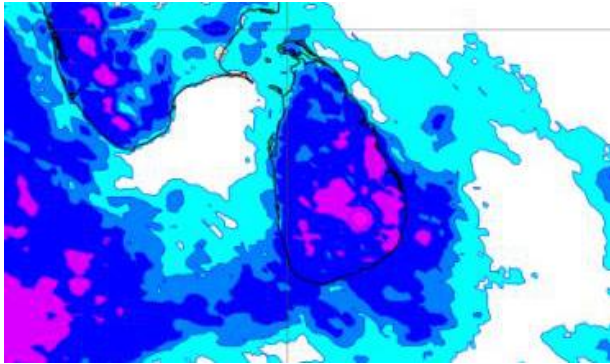
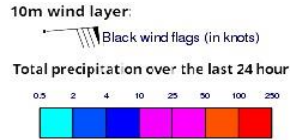


Showers or thundershowers may occur at several places in the sea areas off the coast extending from Colombo to Hambantota via Galle. Showers or thundershowers may occur at a few places in the other sea areas around the island too.

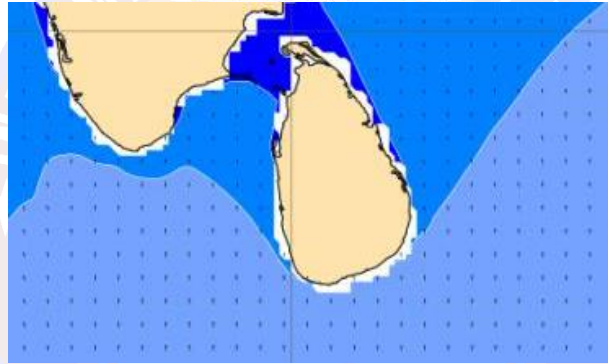
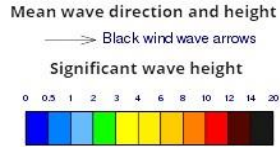
Wind speed will be 20 - 30 kmph in the sea areas around the island.



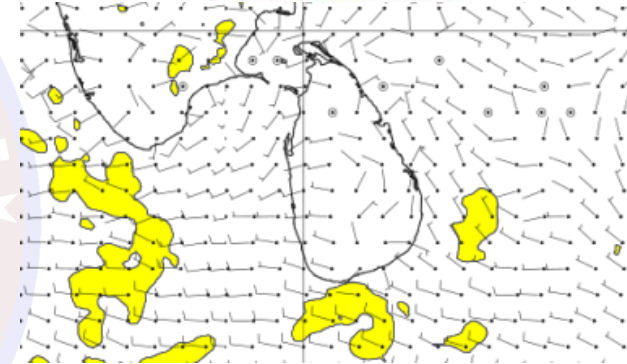
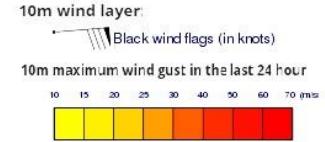
## Wind and Rainfall Forecast (Total precipitation for 24 hrs)



## Significant wave height (in meters)



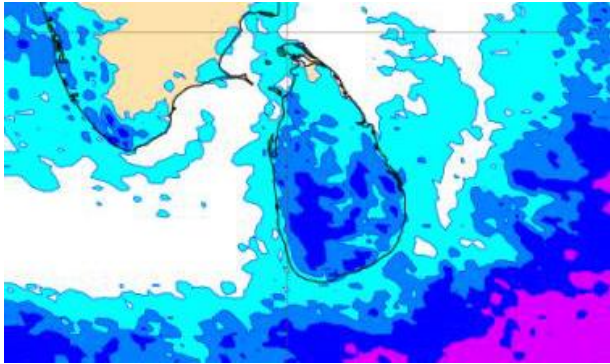
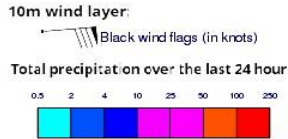
## Wind Gust (m/s)



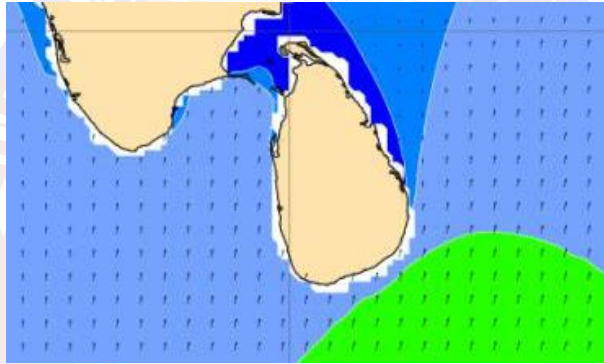
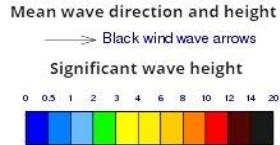
Showers or thundershowers may occur at a few places in the sea areas around the island.

Wind speed will be 20 - 30 kmph in the sea areas around the island.

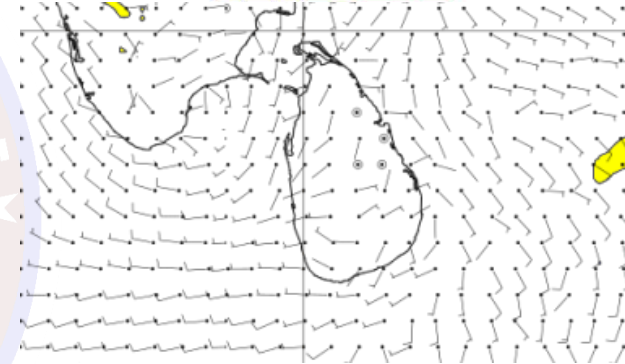
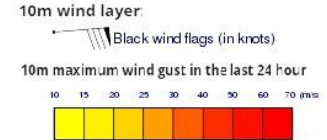
## Wind and Rainfall Forecast (Total precipitation for 24 hrs)



## Significant wave height (in meters)



## Wind Gust (m/s)



Showers or thundershowers may occur at a few places in the sea areas around the island.

Wind speed will be 20 - 30 kmph in the sea areas around the island.