



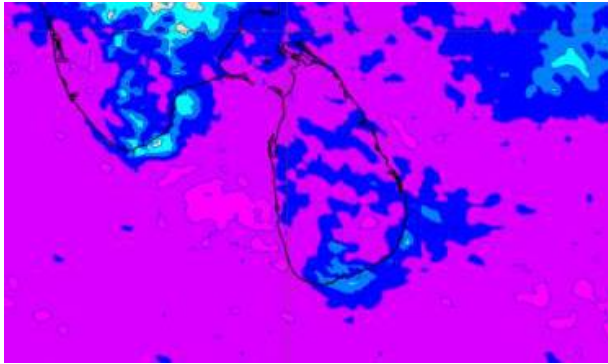
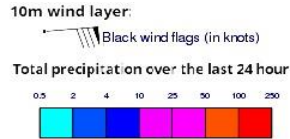
INFORMATION FUSION CENTRE COLOMBO

8 DAY FORECAST FOR COASTAL AREAS AROUND SRI LANKA

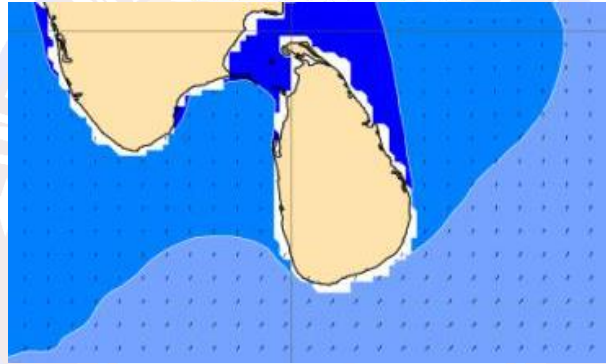
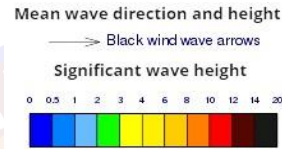
Issued at 10.00 p.m. on 08 April 2022
Marine Weather Division, National Meteorological Centre, Department of
Meteorology

Due to the low-level atmospheric disturbance to the east of Sri Lanka, winds speed can increase upto (40-50) kmph at times in the sea areas off the coast extending from Galle to Trincomalee via Hambantota and Batticaloa. The fishing and naval communities are advised to be vigilant in this regard and requested to be attentive to future weather forecasts.

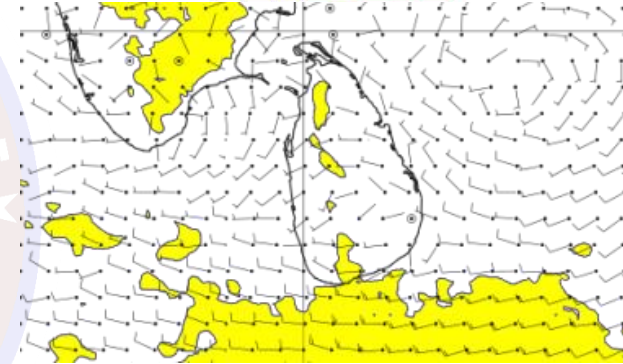
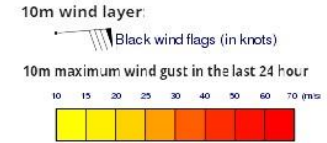
Wind and Rainfall Forecast (Total precipitation for 24 hrs)



Significant wave height (in meters)



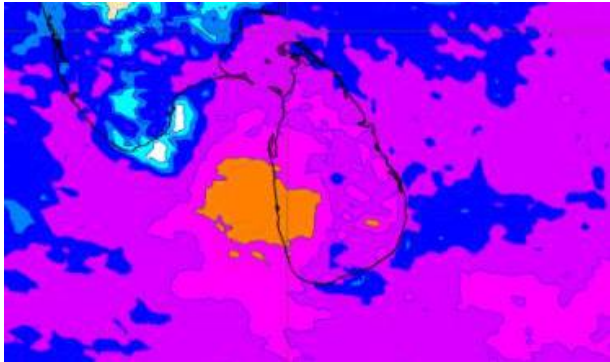
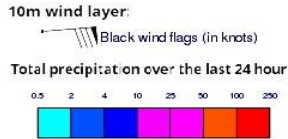
Wind Gust (m/s)



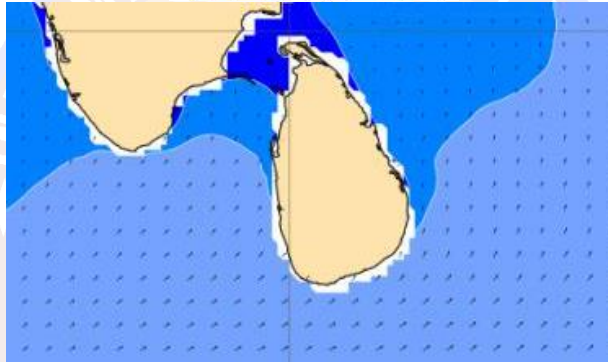
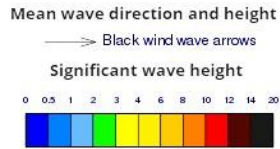
Showers or thundershowers will occur at several places in the sea areas around the island.

Wind speed will be 20-30 kmph in the sea areas around the island. The sea area extending from Galle to Trincomalee via Hambantota and Batticaloa can be fairly rough as winds can increase up to 40-50 kmph

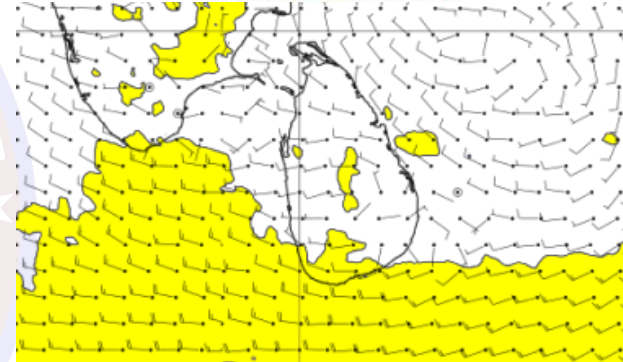
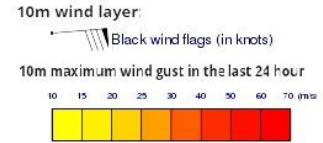
Wind and Rainfall Forecast (Total precipitation for 24 hrs)



Significant wave height (in meters)



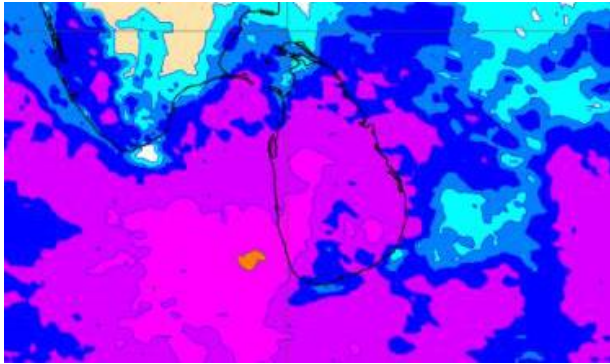
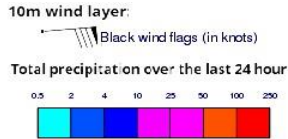
Wind Gust (m/s)



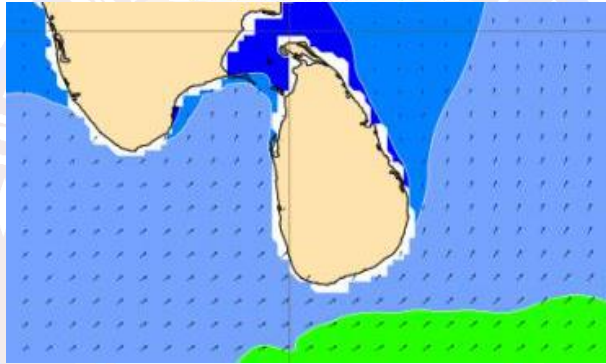
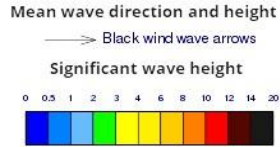
Showers or thundershowers will occur at times in the sea areas around the island.

Wind speed will be 20-30 kmph in the sea areas around the island. The sea area extending from Galle to Trincomalee via Hambantota and Batticaloa can be fairly rough as winds can increase up to 40-50 kmph.

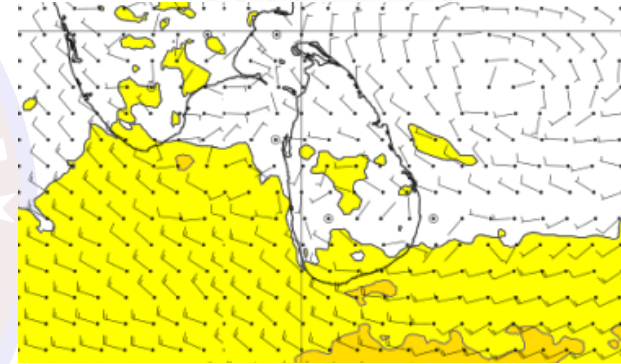
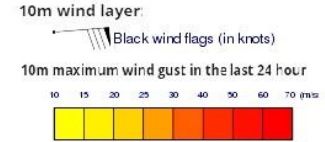
Wind and Rainfall Forecast (Total precipitation for 24 hrs)



Significant wave height (in meters)



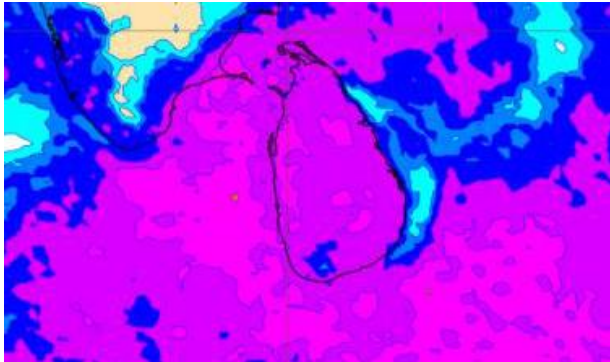
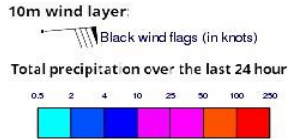
Wind Gust (m/s)



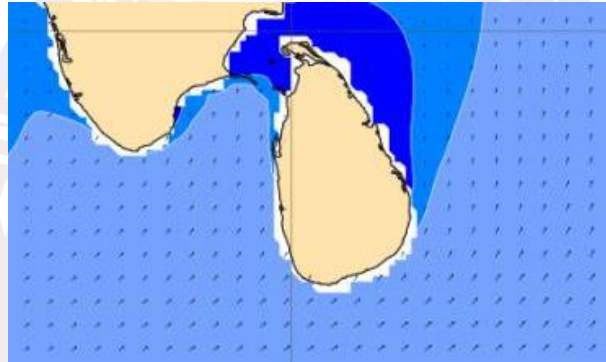
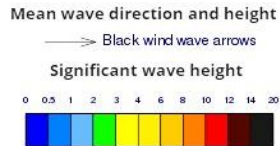
Showers or thundershowers will occur at several places in the sea areas around the island.

Wind speed will be 20 - 30 kmph in the sea areas around the island. The sea area extending from Galle to Pottuvil via Matara and Hambantota can be fairly rough as winds can increase up to 40-50 kmph.

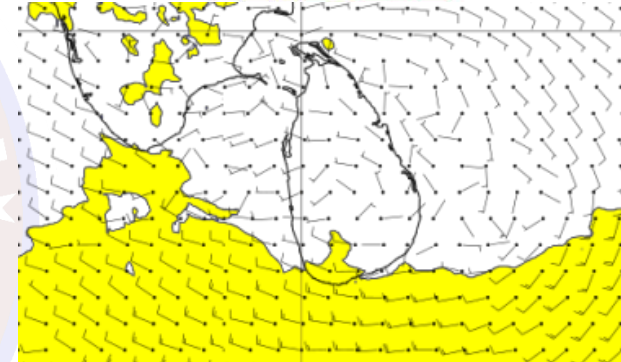
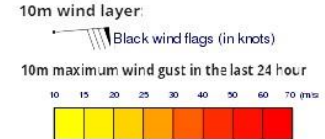
Wind and Rainfall Forecast (Total precipitation for 24 hrs)



Significant wave height (in meters)



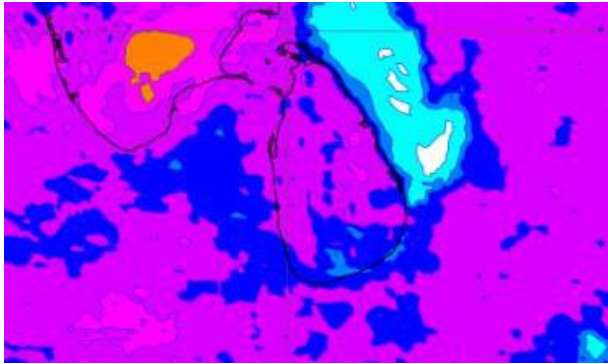
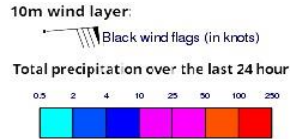
Wind Gust (m/s)



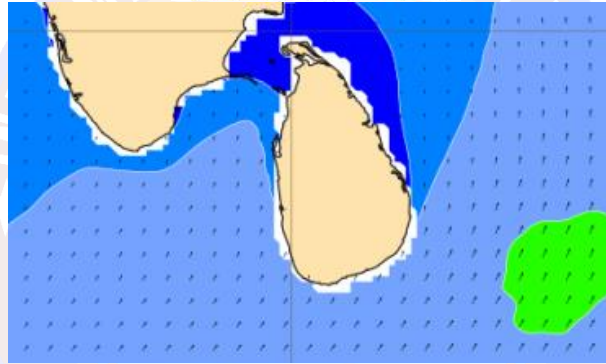
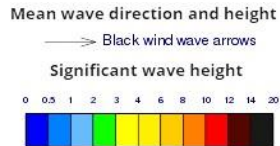
Showers or thundershowers will occur at several places in the sea areas around the island.

Wind speed will be 20 - 30 kmph in the sea areas around the island. The sea area extending from Galle to Hambantota via Matara can be fairly rough as winds can increase up to 40-45 kmph

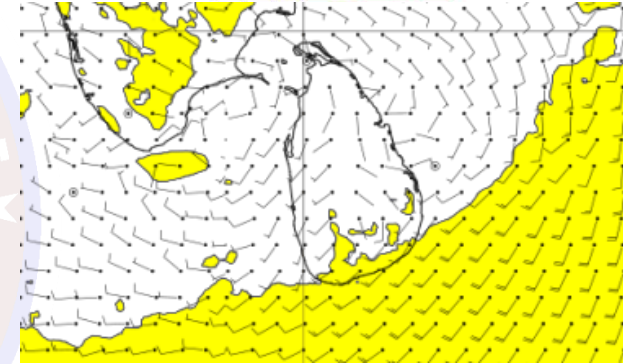
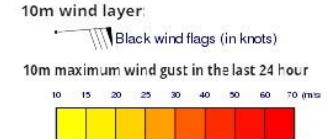
Wind and Rainfall Forecast (Total precipitation for 24 hrs)



Significant wave height (in meters)



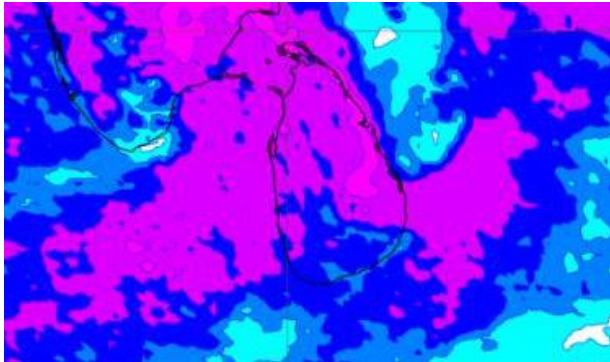
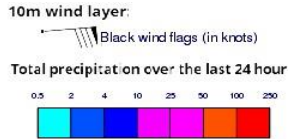
Wind Gust (m/s)



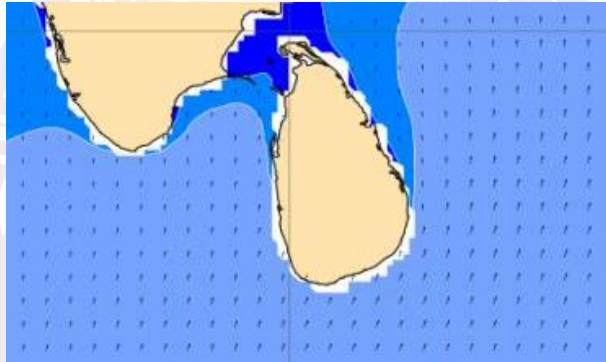
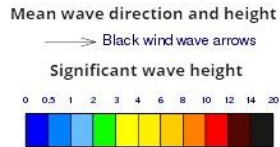
Showers or thundershowers will occur at several places in the sea areas around the island.

Wind speed will be 20 - 30 kmph in the sea areas around the island. The sea area extending from Galle to Hambantota via Matara can be fairly rough as winds can increase up to 40-45 kmph.

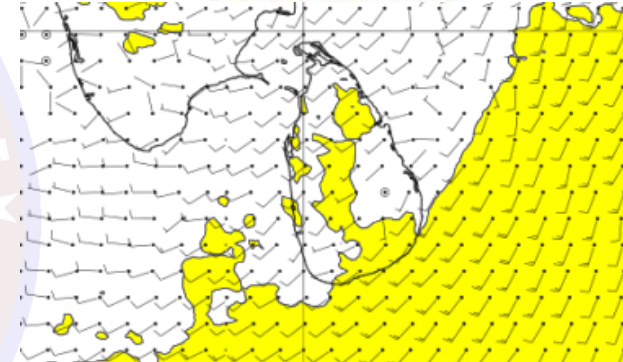
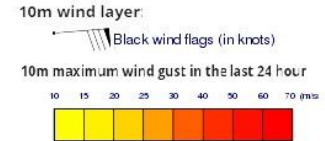
Wind and Rainfall Forecast (Total precipitation for 24 hrs)



Significant wave height (in meters)



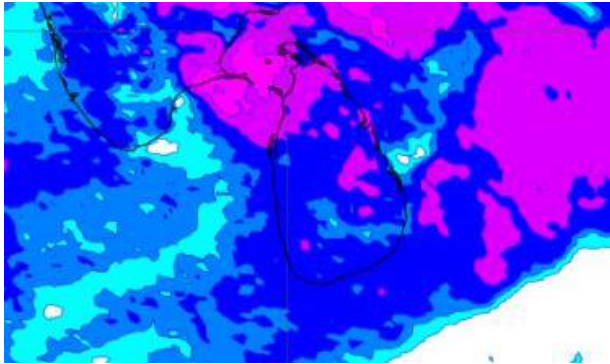
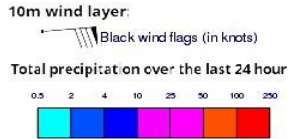
Wind Gust (m/s)



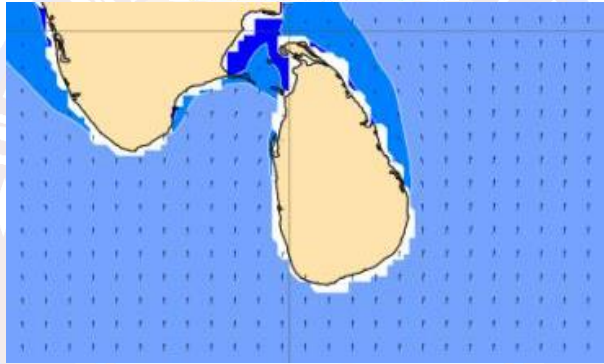
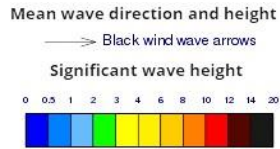
Showers or thundershowers will occur at several places in the sea areas around the island.

Wind speed will be 25 - 35 kmph in the sea areas around the island. The sea area extending from Galle to Batticaloa via Hambantota can be fairly rough as winds can increase up to 45 kmph.

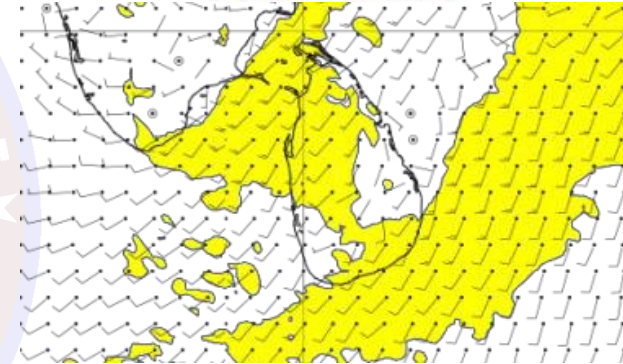
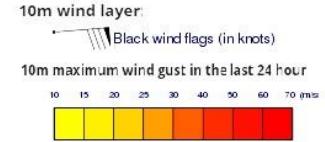
Wind and Rainfall Forecast (Total precipitation for 24 hrs)



Significant wave height (in meters)



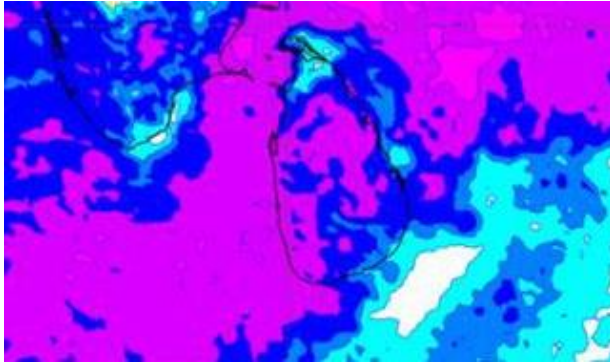
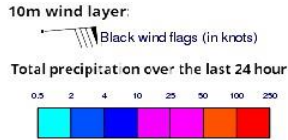
Wind Gust (m/s)



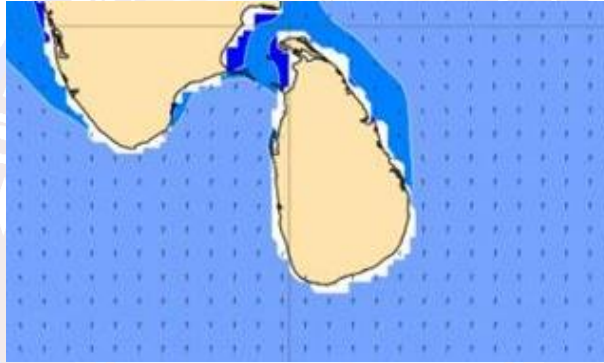
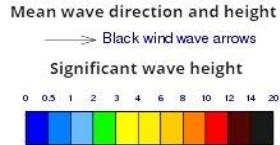
Showers or thundershowers may occur at several places in the sea areas around the island.

Wind speed will be 25 - 30 kmph in the sea areas around the island. The sea area extending from Galle to Batticaloa via Hambantota and sea area extending from Kankasanturai to Puttalam via Mannar can be fairly rough

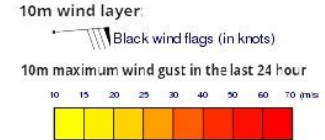
Wind and Rainfall Forecast (Total precipitation for 24 hrs)



Significant wave height (in meters)



Wind Gust (m/s)



Showers or thundershowers may occur at a few places in the sea areas around the island.

Wind speed will be 25 - 35 kmph in the sea areas around the island. The sea area extending from Galle to Batticaloa via Hambantota and sea area extending from Kankasanturai to Colombo via Mannar and Puttalam can be fairly rough as winds can increase up to 45 kmph.